



FIAT 500

500 1.0 GSE Hybrid

VIN NO ZFACF1CJ8NJH54555
Registration Number J8NJH54555



MOT Date



Last Service



Number of Owners



Last Service Mileage



Number of Keys



First Registration Date



2023-04-20

Odometer Reading



7835 km

Country First Registered



Inspection Report Summary

Customer	BCA Online	Report Number	P20250922103230
Inspection Date / Place	2025-09-22 / BCA Berlin	Cosmetic Grade	2

Vehicle Summary

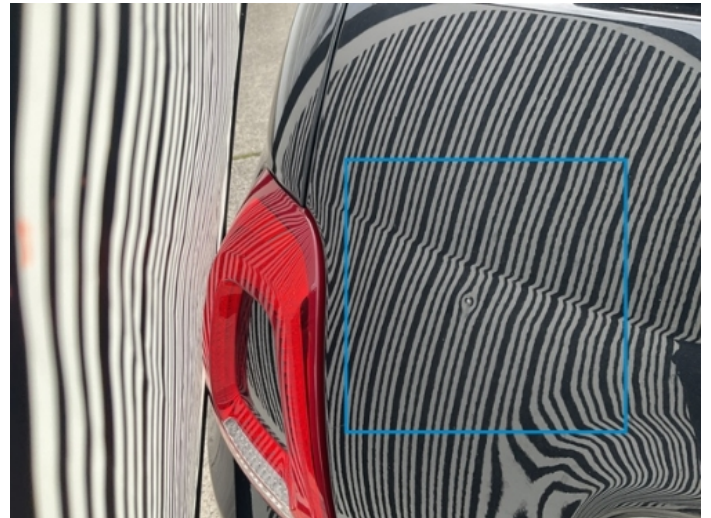
Vehicle Condition	Runner	VAT Type	Qualifying
Fuel Type	Petrol	Road Worthy	Unknown
Colour	Black	Engine Size (cc)	999
Engine Size	1.0	No of Doors	3
Body Type	Sedan	Drive Train	Front
Seat Colour		No of Seats	4
Seat Covering Name	Grau schwarz	Seat Covering	Cloth/Synthetic Leather
Charging Cables		WLTP CO2 Emissions	
Gearbox Type	Manual		

Vehicle History & Documents

Service Book Available	Present	Next Service Mileage	km
Previous Usage		Imported	No
Manufacturer Warrenty			







Equipment

Tinted Glass	Alloys wheels	Cruise control	Remote central locking
Sunroof	Airbag Status	Anti-lock braking	Remote adjusting wing mirrors
Stability control	Radio		

Equipment Details

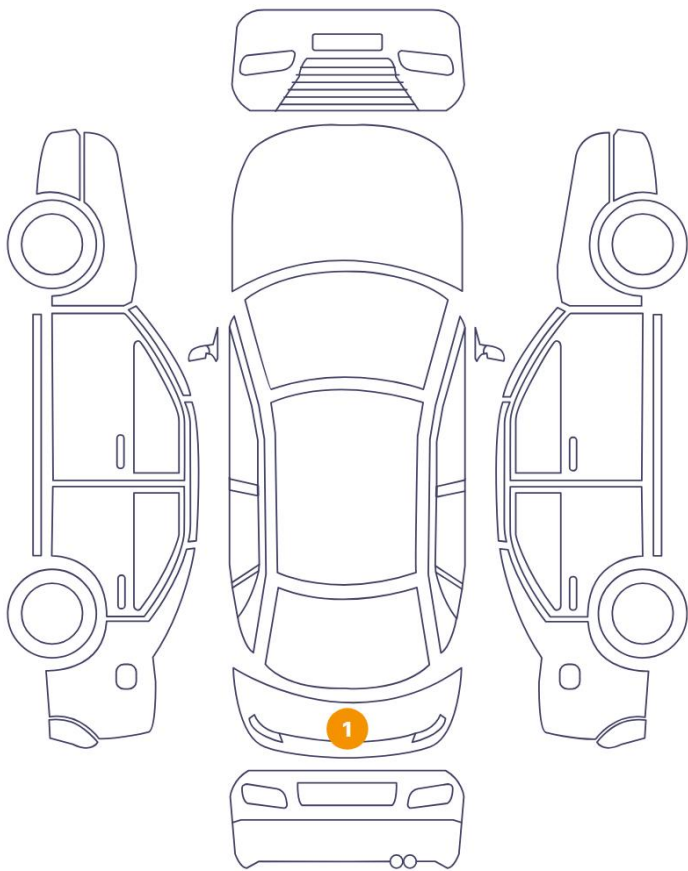
Air Conditioning	Yes	Alloy Wheel Size	15
------------------	-----	------------------	----

Wheels & Tyres

Left Front Tyre Depth	5	Right Rear Tyre Depth	5
Left Rear Tyre Depth	5	Right Front Tyre Depth	5

Cosmetic Damage

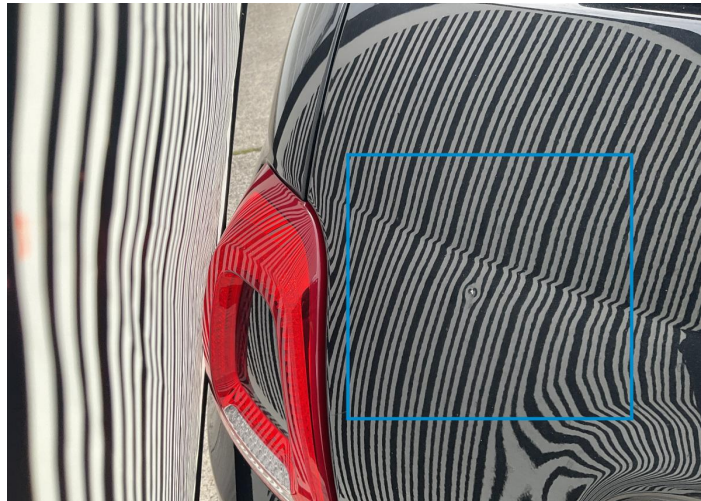
1 Schäden



0 Schäden



Component		Damage	Comments
1	Tailgate	Bodywork / Dent / Dent	



1. Tailgate
Bodywork / Dent / Dent -

Mechanical Condition

Control Lights

ABS Warning Light	✓	ESP Fault/Traction Control Malfunction Light	✓
Airbag Warning Light	✓	Oil Pressure Warning Light	✓
Brake Warning Light	✓	Power Steering Warning Light	✓
Alternator / Battery	✓	No Dashboard Lights	✓
Tire Pressure Monitoring System	✓	Display Defect	✓

Engine

Engine Status / EML	✓	Engine Leak Visible	✓
Engine Starts	✓		

Equipments Test

Electric Windows	✓	Audio Equipment	✓
AC / Heating System	✓	Main & Spare Keys Functioning	✓
Other Equipments	✓		

Levels

Brakes Fluid	✓	Coolant Fluid	✓
--------------	---	---------------	---

Test Drive Inspection

Steering Wheel

Steering | Noise / Anomaly

Engine

Engine Noise The Gears Scratch / Skip / Abnormal Operation

Fume Quantity Power Loss

Brake

Brake System Anomaly

Clutch

Clutch Functioning

General

Test Driven Status

- No troubles detected, good condition or correct tests, according to vehicle age and mileage
- Damages or malfunction detected that requires repairs by the buyer
- Not applicable
- Not tested

Disclaimer

Please also note the "UserGuide condition report", which shows the scope of the vehicle description. [User Guide](#)