



# FIAT 500

## 500 1.0 GSE Hybrid

VIN NO ZFACF1BJ4PJJ26462  
Registration Number J4PJJ26462



MOT Date



Last Service



Number of Owners



Last Service Mileage



Number of Keys



First Registration Date



Odometer Reading



Country First Registered



### Inspection Report Summary

Customer	BCA Online	Report Number	P20251002155521
Inspection Date / Place	2025-10-02 / BCA Berlin	Cosmetic Grade	2

### Vehicle Summary

Vehicle Condition	Runner	VAT Type	Qualifying
Fuel Type	Petrol	Road Worthy	Unknown
Colour	Red	Engine Size (cc)	999
Engine Size	1.0	No of Doors	3
Body Type	Sedan	Drive Train	Front
Seat Colour		No of Seats	4
Seat Covering Name		Seat Covering	Cloth
Charging Cables		WLTP CO2 Emissions	
Gearbox Type	Manual		

### Vehicle History & Documents

Service Book Available	Present Unrecorded	Next Service Mileage	km
Previous Usage		Imported	No
Manufacturer Warrenty			





## Vehicle Remarketing Imagery

[Click Here For Larger Images](#)



**MODEL** 500

INSPEKTION \_\_\_\_\_

MOTOROLAWEGSEL \_\_\_\_\_

VORGESCHEN BEI KM \_\_\_\_\_

DURCHGEFÜHRT BEI KM 15000

FAHRGESTELL NR. 2

DATUM \_\_\_\_\_

**Autobus Gerhard König GmbH**  
**Neuer Südweg 106**  
**39128 Walsdorf**  
**Telefon 0391 381501**  
**Fax 0391 381500**

**MODEL** \_\_\_\_\_

INSPEKTION \_\_\_\_\_ ☒

MOTOROLAWEGSEL \_\_\_\_\_ ☒

VORGESCHEN BEI KM \_\_\_\_\_

DURCHGEFÜHRT BEI KM \_\_\_\_\_

FAHRGESTELL NR. \_\_\_\_\_

DATUM \_\_\_\_\_

STIMPEL UND UNTERSCHRIFT \_\_\_\_\_

**MODEL** \_\_\_\_\_

INSPEKTION \_\_\_\_\_ ☐

MOTOROLAWEGSEL \_\_\_\_\_

VORGESCHEN BEI KM \_\_\_\_\_

DURCHGEFÜHRT BEI KM \_\_\_\_\_

FAHRGESTELL NR. \_\_\_\_\_

DATUM \_\_\_\_\_

STIMPEL UND UNTERSCHRIFT \_\_\_\_\_

**MODEL** \_\_\_\_\_

INSPEKTION \_\_\_\_\_ ☐

MOTOROLAWEGSEL \_\_\_\_\_

VORGESCHEN BEI KM \_\_\_\_\_

DURCHGEFÜHRT BEI KM \_\_\_\_\_

FAHRGESTELL NR. \_\_\_\_\_

DATUM \_\_\_\_\_

STIMPEL UND UNTERSCHRIFT \_\_\_\_\_



Equipment

Trip Computer	Airbag Status	AndroidAuto	AppleCarPlay
Cruise control	Remote central locking	Leather steering wheel	USB Socket
Alloys wheels	Anti-lock braking	Bluetooth telephone interface	Remote adjusting wing mirrors
Stability control	Radio		

Equipment Details

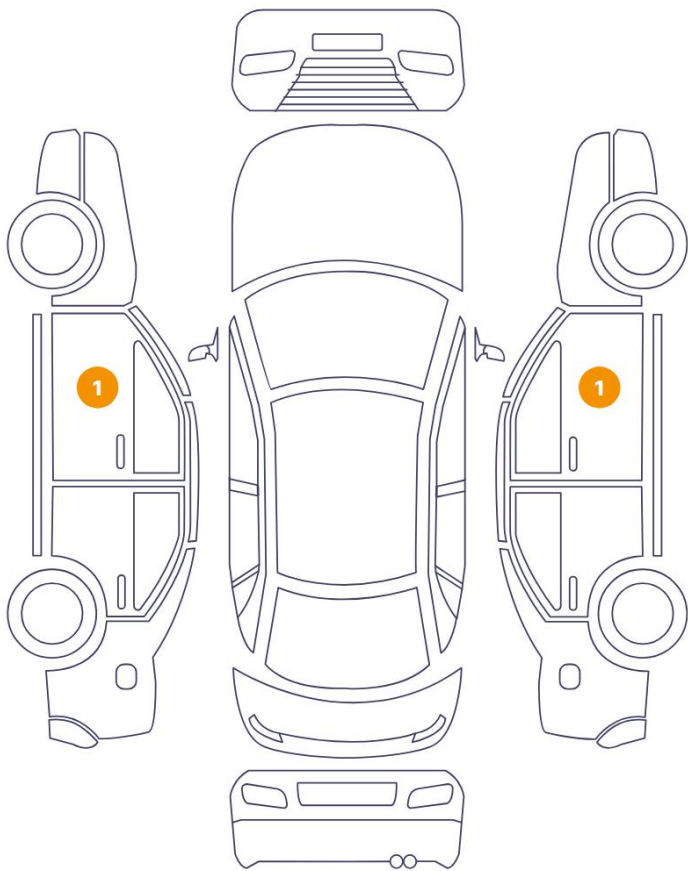
Air Conditioning	Yes	Alloy Wheel Size	15
------------------	-----	------------------	----

Wheels & Tyres

Right Rear Tyre Depth	6	Left Rear Tyre Depth	6
Right Front Tyre Depth	7	Left Front Tyre Depth	7

Cosmetic Damage

2 Schäden



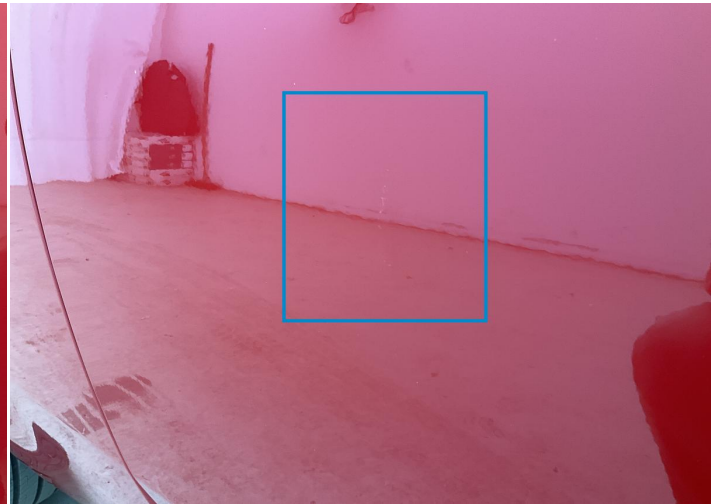
0 Schäden



Component		Damage	Comments
1	Door / Front Left	Paint / Scratch / Scuff	
2	Door / Front Right	Paint / Scratch / Line	



1. Door / Front Left  
Paint / Scratch / Scuff -



2. Door / Front Right  
Paint / Scratch / Line -

## Mechanical Condition

### Control Lights

ABS Warning Light	✓	ESP Fault/Traction Control Malfunction Light	✓
Airbag Warning Light	✓	Oil Pressure Warning Light	✓
Brake Warning Light	✓	Power Steering Warning Light	✓
No Dashboard Lights	✓	Display Defect	✓
Tire Pressure Monitoring System	✓	Service Light	✓

### Engine

Engine Status / EML	✓	Engine Leak Visible	✓
Engine Starts	✓		

### Gearbox

Gear Box	✓
----------	---

### Equipments Test

Electric Windows	✓	Audio Equipment	✓
AC / Heating System	✓	Main & Spare Keys Functioning	✓
Other Equipments	✓		

### Levels

Brakes Fluid	✓	Coolant Fluid	✓
--------------	---	---------------	---

### Hybrid/EV

Hybrid System Fault	✓
---------------------	---

Test Drive Inspection

Steering Wheel			
Steering   Noise / Anomaly		✓	
Engine			
Engine Noise	✓	The Gears Scratch / Skip / Abnormal Operation	✓
Fume Quantity	✓	Power Loss	✓
Brake			
Brake System Anomaly		✓	
General			
Test Driven Status		✓	
✓ <i>No troubles detected, good condition or correct tests, according to vehicle age and mileage</i>			
! <i>Damages or malfunction detected that requires repairs by the buyer</i>			
NA <i>Not applicable</i>			
= <i>Not tested</i>			

Disclaimer

Please also note the "UserGuide condition report", which shows the scope of the vehicle description.

[User Guide](#)