



FIAT 500

500 0.9 TwinAir Turbo Start&Stopp

VIN NO ZFA3120000J181304
Registration Number 000J181304



MOT Date

2027-07-01

Last Service



Number of Owners

1

Last Service Mileage



Number of Keys

2

First Registration Date

2014-06-05

Odometer Reading

149848 km

Country First Registered

Germany

Inspection Report Summary

Customer	BCA Online	Report Number	P20250918113318
Inspection Date / Place	2025-09-18 / BCA Oberndorf	Cosmetic Grade	3

Vehicle Summary

Vehicle Condition	Runner	VAT Type	Margin
Fuel Type	Petrol	Road Worthy	Yes
Colour	Blue	Engine Size (cc)	875
Engine Size	0.9	No of Doors	3
Body Type	Sedan	Drive Train	Front
Seat Colour		No of Seats	4
Seat Covering Name		Seat Covering	Cloth
Charging Cables		NEDC CO2 Rating (q/km)	99
Gearbox Type	Manual		

Vehicle History & Documents

Service Book Available	Missing	Next Service Mileage	km
Previous Usage		Imported	No
Manufacturer Warrenty			

Vehicle Remarketing Imagery

[Click Here For Larger Images](#)







Equipment

Airbag Status	Anti-lock braking	Front fog lamps	Remote central locking
Leather steering wheel	Rear parking sensors	Alloys wheels	Auxiliary Socket
Remote adjusting wing mirrors	Stability control	Radio	

Equipment Details

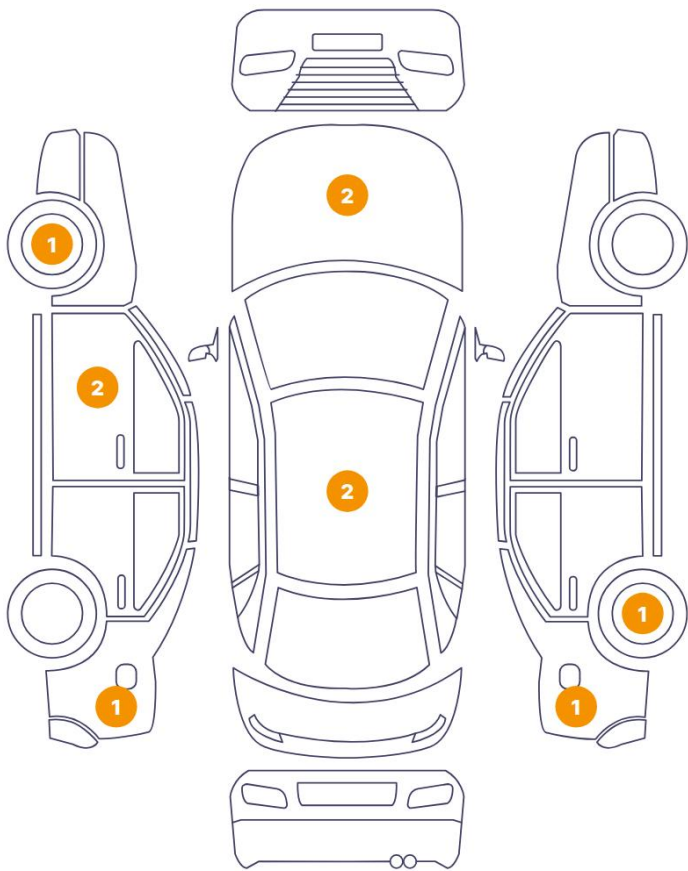
Air Conditioning	Yes	Alloy Wheel Size	18
Extra Wheel / Tyre Set	Winter Tyres - Alloy		

Wheels & Tyres

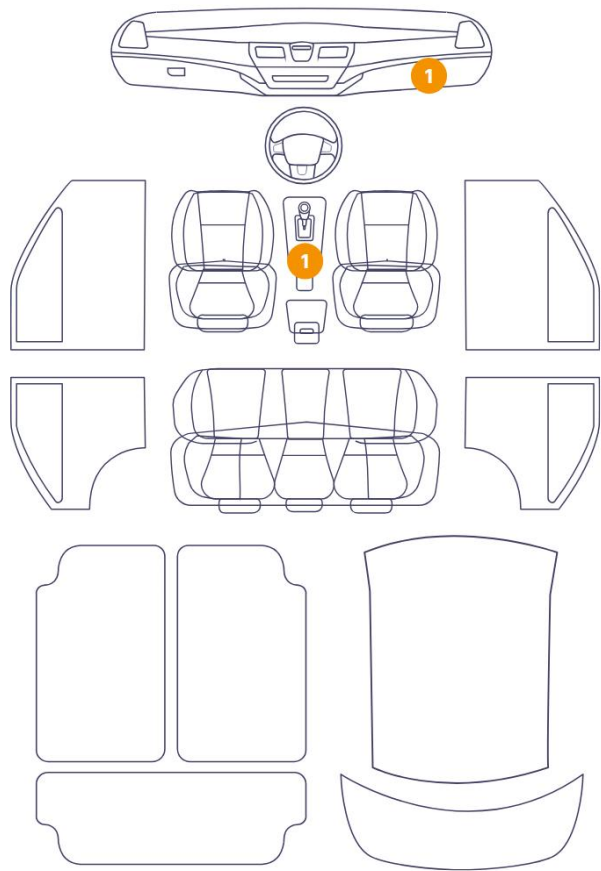
Extra Wheel - 1 Tyre Depth	6	Extra Wheel - 2 Tyre Depth	6
Extra Wheel - 3 Tyre Depth	7	Extra Wheel - 4 Tyre Depth	7
Right Front Tyre Depth	4	Left Front Tyre Depth	4
Right Rear Tyre Depth	4	Left Rear Tyre Depth	4

Cosmetic Damage

10 Schäden



2 Schäden



Component		Damage	Comments
1	Gear Knob	Interior / Dented	
2	Dashboard / Front	Interior / Dented	
3	Roof	Paint / Poor Previous Repair	
4	Rim / Front Left	Out of Bodywork / Scratch	
5	Pillar / Front Left	Paint / Poor Previous Repair	
6	Roof	Bodywork / Dent / Dent	
7	Side Panel / Back Left	Bodywork / Dent / Dent	
8	Door / Front Left	Bodywork / Dent / Dent	
9	Hood	Paint / Poor Previous Repair	
10	Hood	Paint / Stone Chip	
11	Rim / Back Right	Out of Bodywork / Scratch	
12	Side Panel / Back Right	Bodywork / Dent / Dent	



1. Gear Knob
Interior / Dented -



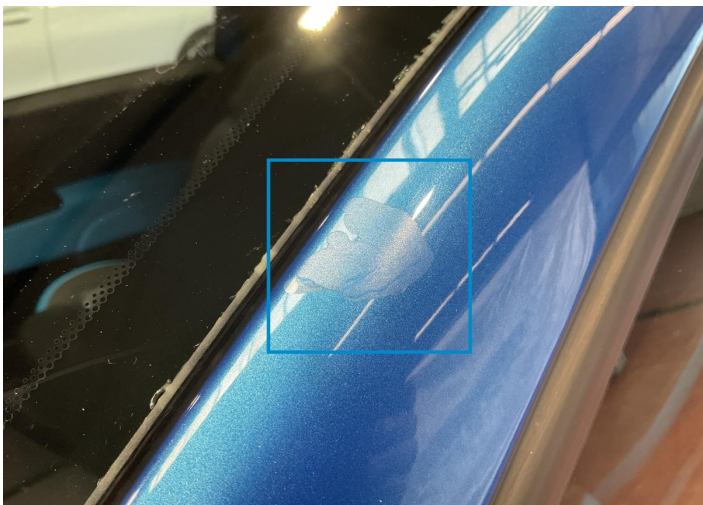
2. Dashboard / Front
Interior / Dented -



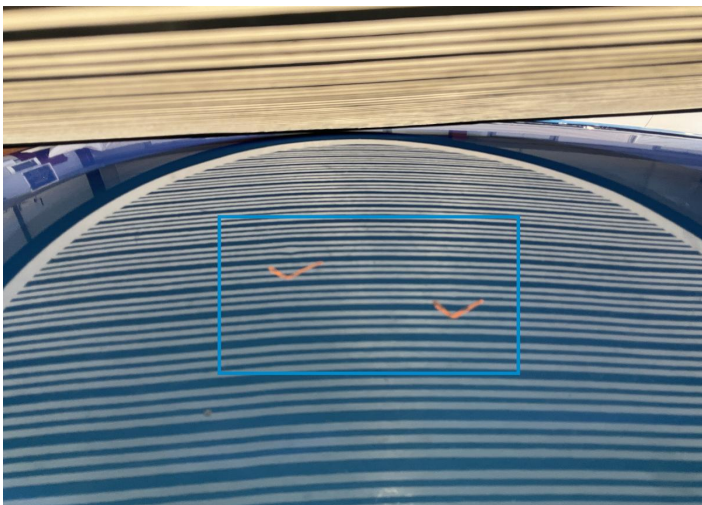
3. Roof
Paint / Poor Previous Repair -



4. Rim / Front Left
Out of Bodywork / Scratch -



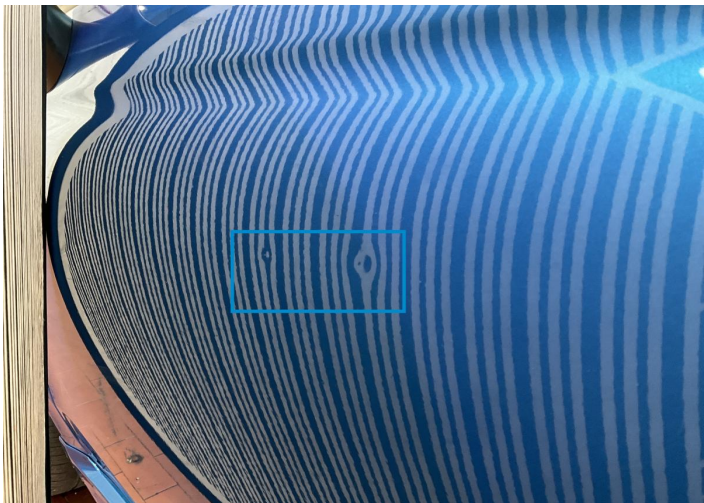
5. Pillar / Front Left
Paint / Poor Previous Repair -



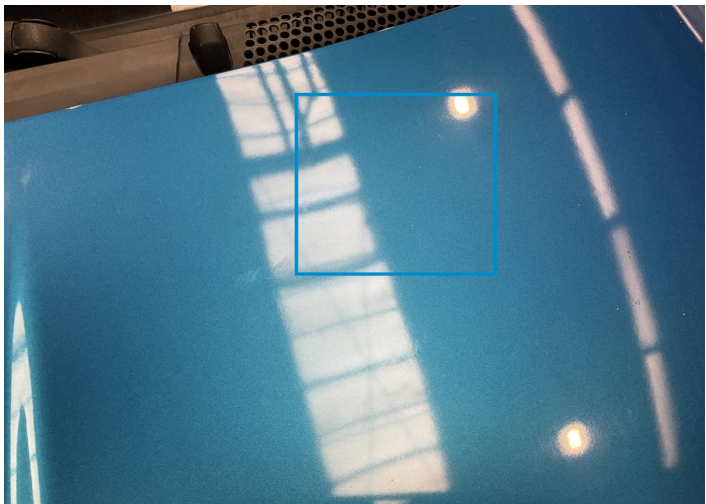
6. Roof
Bodywork / Dent / Dent -



7. Side Panel / Back Left
Bodywork / Dent / Dent -



8. Door / Front Left
Bodywork / Dent / Dent -



9. Hood
Paint / Poor Previous Repair -



10. Hood
Paint / Stone Chip -



11. Rim / Back Right
Out of Bodywork / Scratch -



12. Side Panel / Back Right
Bodywork / Dent / Dent -

Mechanical Condition

Equipments Test

Central Locking	✓	Audio Equipment	✓
AC / Heating System	✓	Electric Windows	✓
Parking Sensors / Cameras Functioning	✓		

Control Lights

ABS Warning Light	✓	ESP Fault/Traction Control Malfunction Light	✓
Airbag Warning Light	✓	Oil Pressure Warning Light	✓
Brake Warning Light	✓	Power Steering Warning Light	✓
Alternator / Battery	✓	No Dashboard Lights	✓
Display Defect	✓	Service Light	✓

Engine

Engine Status / EML	✓	Engine Leak Visible	✓
Engine Starts	✓		

Gearbox

Gear Box	✓
----------	---

Levels

Brakes Fluid	✓	Coolant Fluid	✓
--------------	---	---------------	---

Test Drive Inspection

Steering Wheel


Steering | Noise / Anomaly 

Engine

Engine Noise  Fume Quantity 





Power Loss 

Clutch

Clutch Functioning 

General

Test Driven Status Not Performed

-  No troubles detected, good condition or correct tests, according to vehicle age and mileage
-  Damages or malfunction detected that requires repairs by the buyer
-  Not applicable
-  Not tested

Disclaimer

Please also note the "UserGuide condition report", which shows the scope of the vehicle description. [User Guide](#)