



FIAT 500

500 0.9 TwinAir Start&Stopp

VIN NO ZFA31200000877920
Registration Number 0000877920



MOT Date



Last Service

2019-12-27

Number of Owners



Last Service Mileage

86182

Number of Keys



First Registration Date

2012-09-12

Odometer Reading



128767 km

Country First Registered



Inspection Report Summary

Customer	BCA Online	Report Number	P20251001132930
Inspection Date / Place	2025-10-01 / Extern	Cosmetic Grade	4

Vehicle Summary

Vehicle Condition	Runner	VAT Type	Margin
Fuel Type	Petrol	Road Worthy	Yes
Colour	Black	Engine Size (cc)	875
Engine Size	0.9	No of Doors	3
Body Type	Sedan	Drive Train	Front
Seat Colour		No of Seats	4
Seat Covering Name	Grau	Seat Covering	Cloth
Charging Cables		NEDC CO2 Rating (q/km)	92
Gearbox Type	Manual		

Vehicle History & Documents

Service Book Available	Present	Next Service Mileage	km
Previous Usage		Imported	No
Manufacturer Warrenty			







WARTUNGSNACHWEISE
Bitte überprüfen Sie in Ihrer Betriebsanleitung welche Wartungsintervalle für Ihr Fahrzeug vorgesehen sind. Ihr Servicepartner bestätigt jede durchgeführte Wartung jeweils in einem der folgenden Felder:

MODELL	INSTRUKTION	MOTORKUWCHSEL	VORGESCHEN BEI KM	DURCHGEFÜHRT BEI KM	DATUM	STAMP
500 0.7						
500 6.0/5			48523	19.01.2016		
500 6.0/5						
500 6.0/5						

Auto Technik Sülfingen GmbH
20200 Sülfingen, Tel. 05441 9100-0, Fax 05441 9100-76

ATS
Öl Luft Wasser Bremsen

GARANTIE
MOBILITÄT
SERVICE



Equipment

Airbag Status	Anti-lock braking	Front fog lamps	Remote central locking
Stability control	CD Player	Radio	Alloys wheels
Auxiliary Socket	Remote adjusting wing mirrors	Split folding rear seats	Sunroof

Leather steering wheel

Equipment Details

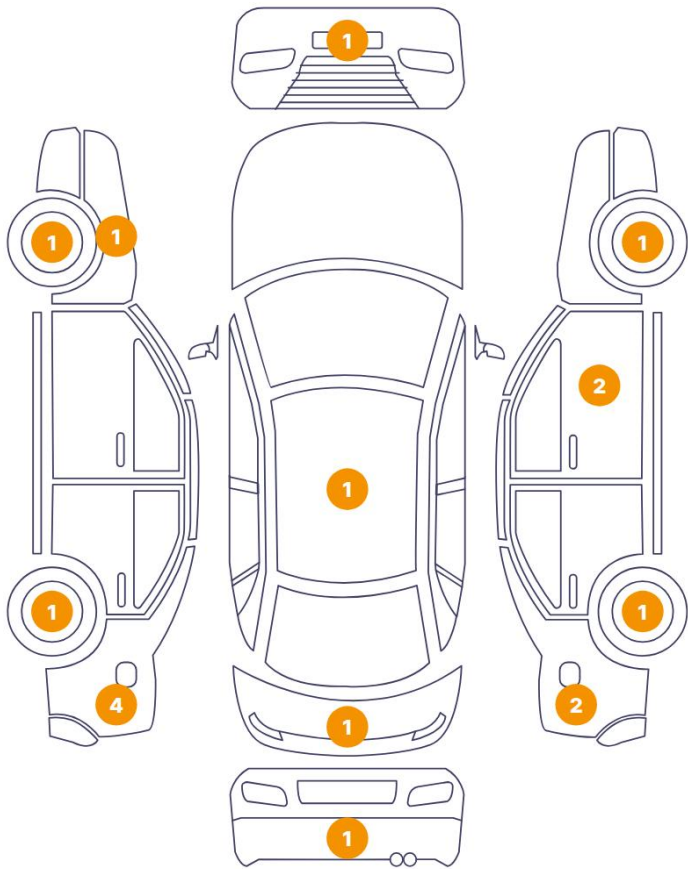
Air Conditioning	Yes	Alloy Wheel Size	16
Sunroof Type	Fixed Panoramic		

Wheels & Tyres

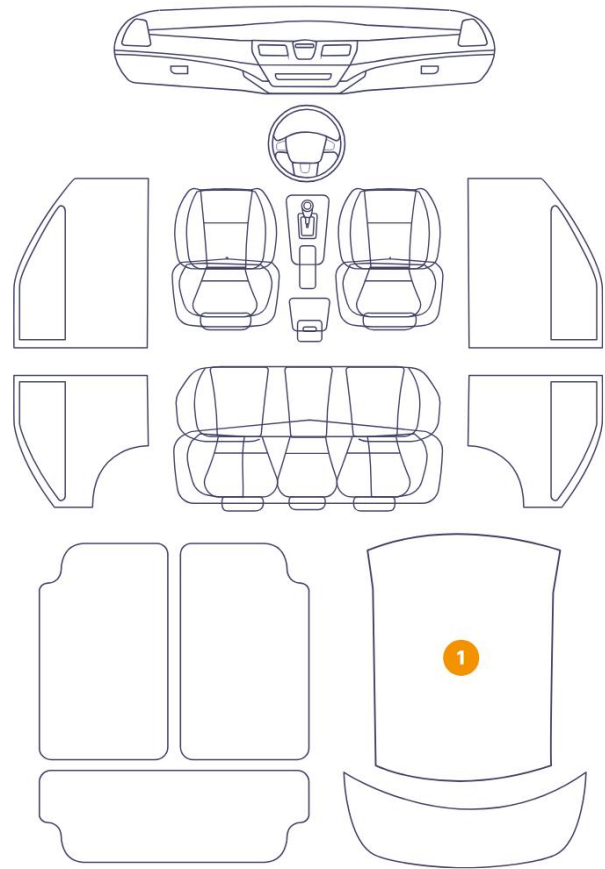
Left Rear Tyre Depth	5	Right Rear Tyre Depth	5
Left Front Tyre Depth	6	Right Front Tyre Depth	6

Cosmetic Damage

17 Schäden



1 Schäden



Component		Damage	Comments
1	Rim / Front Left	Out of Bodywork / Scratch	
2	Fender / Back Left	Paint / Scratch / Scuff	
3	Rim / Back Left	Out of Bodywork / Scratch	
4	Side Panel / Back Left	Paint / Scratch / Scuff	
5	Side Panel / Back Left	Bodywork / Dent / Deformation	
6	Bumper / Back	Paint / Scratch / Scuff	
7	Tailgate	Bodywork / Dent / Deformation	
8	Rim / Back Right	Out of Bodywork / Scratch	
9	Fender / Back Right	Bodywork / Dent / Deformation	
10	Rim / Front Right	Out of Bodywork / Scratch	
11	Bumper / Front	Paint / Scratch / Scuff	
12	Side Panel / Back Right	Bodywork / Dent / Deformation	

13	Door / Front Right	Bodywork / Dent / Deformation
14	Door / Front Right	Bodywork / Dent / Deformation
15	Roof	Bodywork / Dent / Deformation
16	Fender / Back Left	Bodywork / Dent / Deformation
17	Fender / Front Left	Bodywork / Dent / Deformation
18	Roof Upholstery	Interior / Non - compliant



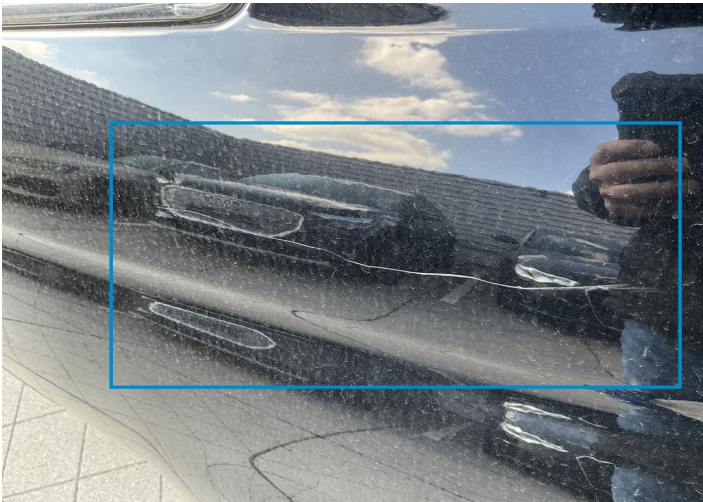
1. Rim / Front Left
Out of Bodywork / Scratch -



2. Fender / Back Left
Paint / Scratch / Scuff -



3. Rim / Back Left
Out of Bodywork / Scratch -



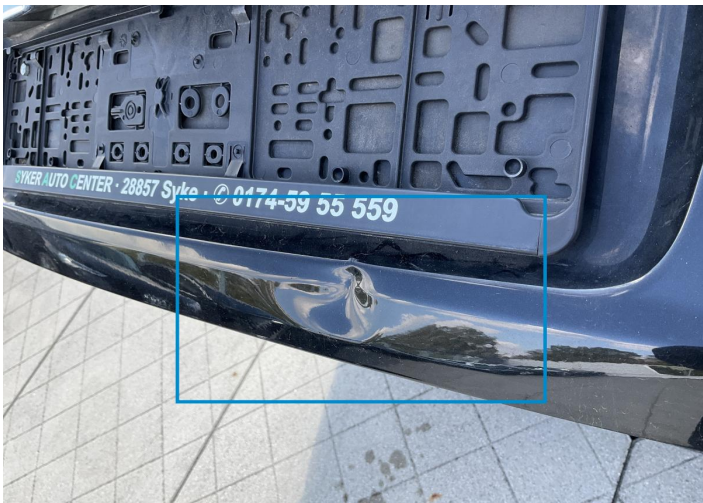
4. Side Panel / Back Left
Paint / Scratch / Scuff -



5. Side Panel / Back Left
Bodywork / Dent / Deformation -



6. Bumper / Back
Paint / Scratch / Scuff -



7. Tailgate
Bodywork / Dent / Deformation -



8. Rim / Back Right
Out of Bodywork / Scratch -



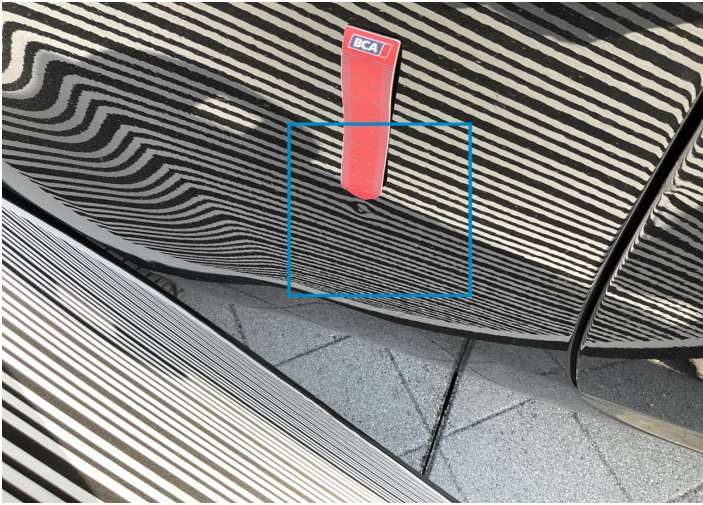
9. Fender / Back Right
Bodywork / Dent / Deformation -



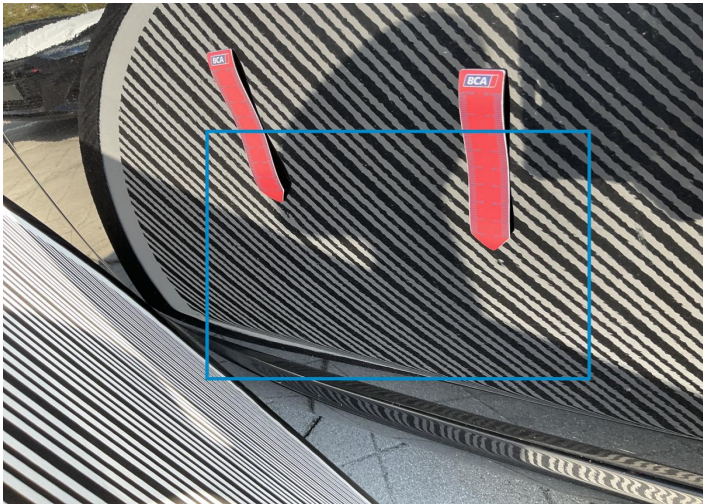
10. Rim / Front Right
Out of Bodywork / Scratch -



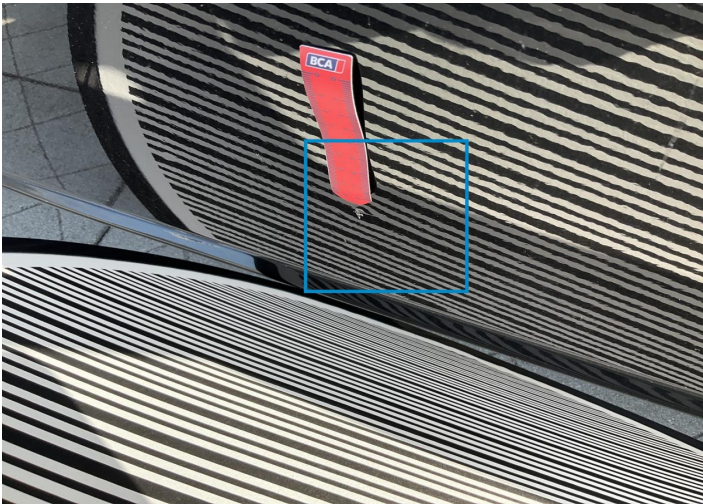
11. Bumper / Front
Paint / Scratch / Scuff -



12. Side Panel / Back Right
Bodywork / Dent / Deformation -



13. Door / Front Right
Bodywork / Dent / Deformation -



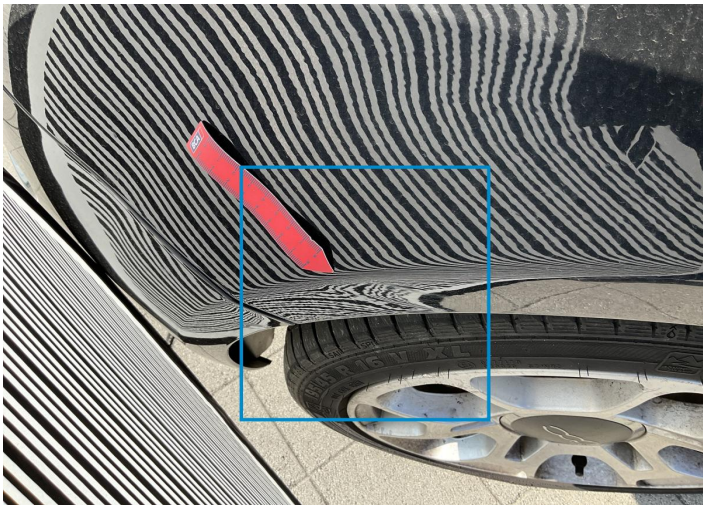
14. Door / Front Right
Bodywork / Dent / Deformation -



15. Roof
Bodywork / Dent / Deformation -



16. Fender / Back Left
Bodywork / Dent / Deformation -



17. Fender / Front Left
Bodywork / Dent / Deformation -



18. Roof Upholstery
Interior / Non - compliant -

Mechanical Condition

Equipments Test

Central Locking	✓	Electric Windows	✓
Audio Equipment	✓	AC / Heating System	✓
Main & Spare Keys Functioning	⚠	Other Equipments	✓

Control Lights

ABS Warning Light	✓	ESP Fault/Traction Control Malfunction Light	✓
Airbag Warning Light	✓	Oil Pressure Warning Light	✓
Brake Warning Light	✓	Power Steering Warning Light	✓
Alternator / Battery	✓	No Dashboard Lights	✓
Service Light	✓	Display Defect	✓

Engine

Engine Status / EML	✓	Engine Leak Visible	✓
Engine Starts	✓		

Levels

Brakes Fluid	✓	Coolant Fluid	✓
--------------	---	---------------	---

Test Drive Inspection

Steering Wheel			
Steering Noise / Anomaly		✔	
Engine			
Engine Noise	✔	The Gears Scratch / Skip / Abnormal Operation	✔
Fume Quantity	✔	Power Loss	✔
Brake			
Brake System Anomaly		✔	
Clutch			
Clutch Functioning		✔	
General			
Test Driven Status		✔	
✔ <i>No troubles detected, good condition or correct tests, according to vehicle age and mileage</i>			
! <i>Damages or malfunction detected that requires repairs by the buyer</i>			
NA <i>Not applicable</i>			
= <i>Not tested</i>			

Disclaimer

Please also note the "UserGuide condition report", which shows the scope of the vehicle description.

[User Guide](#)