



Expertise

Protocol number: 41763188  
Order number / reference: 25240777  
Inspection date: 30 Sept 2025

Manufacturer: Fiat

Model: Doblo Cargo Natural Power SX

VIN: ZFA26300006U42773



Vehicle details	
Manufacturer / Type / Model / Equipment	
Fiat Doblo Cargo Natural Power SX	
Vehicle Identification number	ZFA26300006U42773
Mileage (Read)	20,917 km
First registration	17 Jun 2021
Number of holders	1
Power / Engine displacement	88 kw / 1,368 ccm
Fuel type / Cylinder	Petrol / compressed natural gas / 4
Gearbox / Number of gears	Manual / 6
Type of drive	Front drive
Type of vehicle	Van
Colour / colour code	EXTERIOR COLOUR: BIANCO GELATO/ BANCHISA
Doors / Seats	4 / 2
Upholstery type	Cloth
Colour of upholstery	Black-Grey



## Vehicle details

<b>Maintenance booklet / proof</b>	digital proof / complete	<b>Next maintenance in</b>	28,857 km
<b>Last maintenance on / at</b>	06/2025 at 16,559 km		
<b>Key is / should be</b>	2 / 2	<b>FZG documents</b>	ZB#2 (B) was available (copy), ZB#1 (S) was not available
		<b>Letter No.</b>	GC705231
<b>Previous damage / Accident</b>	None detectable	<b>Repainting</b>	None detectable
<b>Inspection conditions</b>	sufficient	<b>Lifting equipment / pit</b>	yes
<b>Test drive</b>	Not performed	<b>Engine function test</b>	Performed
<b>Manufacturer key number/ type code number</b>	1727 / AIK 00099		
<b>Emission standard</b>	EURO6;WLTP;CH;PI/CI; N1 II	<b>Fine dust sticker</b>	
<b>Permitted total weight</b>	2,443 kg	<b>Empty weight</b>	

## Tyres

### Mounted tyres

#	Tyre size	Type of tyre	Manufacturer	Tread depth
1)	195/60 R16 99T	Winter tyres on Steel rim with wheel cover	Hankook	7mm / 7mm
2)	195/60 R16 99T	Winter tyres on Steel rim with wheel cover	Hankook	8mm / 8mm

**Legend:** Tread depth information for tires on the left is in the first place, for tires on the right is in the second place on the axle in the direction of travel



## Equipment

### Standard equipment

- |  |  |
|--|--|
| <ul style="list-style-type: none"> <li>• Storage compartment in the roof</li> <li>• Airbag, driver</li> <li>• Outside temperature display</li> <li>• tachometer</li> <li>• Increased payload</li> <li>• Windows: Third row of windows sheeted</li> <li>• Radio remote control for central locking</li> <li>• Transmission: 6-speed transmission</li> <li>• Height-adjustable steering wheel</li> <li>• Headrests (2) front</li> <li>• Cargo compartment lining</li> <li>• Fog light</li> <li>• Radio: 5" Bluetooth touchscreen Uconnect radio with DAB</li> <li>• hubcaps</li> <li>• Sliding door passenger side</li> <li>• Seat: Passenger adjustable in length and angle</li> <li>• Socket: 12 volts</li> <li>• Daytime running light</li> <li>• Lashing eyes in the cargo area (6)</li> <li>• Immobilizer, electronic</li> <li>• Central locking</li> </ul> | <ul style="list-style-type: none"> <li>• ABS with EBD, Hydraulic Brake Assist (HBA),</li> <li>• Exterior mirrors electrically adjustable, heated and foldable</li> <li>• brake discs</li> <li>• Third brake light</li> <li>• ESP, ASR, MSR including hill start assist (Hill Holder)</li> <li>• Electric front windows</li> <li>• Warranty: Fiat Professional 4. VEHICLE YEAR/ 100,000 km</li> <li>• Glove compartment, lockable</li> <li>• Air conditioning</li> <li>• Paint finish: Solid paint</li> <li>• Speakers (2 + 2 tweeters)</li> <li>• Upholstery: Cloth</li> <li>• Radio: Multifunction steering wheel with radio controls</li> <li>• Wheels: full-size spare wheel</li> <li>• Power steering</li> <li>• Seat: Height-adjustable driver's seat with lumbar support and armrest</li> <li>• Partition wall: Sound insulation of the partition wall</li> <li>• Fully covered guide rail sliding door</li> <li>• Thermal insulation glazing</li> </ul> |
|--|--|

### Extra equipment

- |   |  |
|---|--|
| <ul style="list-style-type: none"> <li>• Airbag on passenger side (can be deactivated)</li> <li>• Cargo space ventilation</li> <li>• Partition wall: steel with window</li> <li>• Winter tire conversion</li> </ul> | <ul style="list-style-type: none"> <li>• Rear doors glazed (incl. rear window wiper and rear window heating)</li> <li>• Workshop Professional Sortimo</li> </ul> |
|---|--|

## Brief expert findings

Documents submitted	At the time of the inspection, the registration certificate Part 2 (letter) was available, but the registration certificate Part 1 (certificate) was not. (Copy)
VIN comparison	The vehicle identification number (VIN) was read from the vehicle and its conformity with the submitted documents was verified during the inspection by the undersigned.
Inspection	The inspection conditions were sufficient for the assessment of the vehicle. Lifting equipment and a pit were available for examining the vehicle.
Test drive	No test drive/maneuvering was carried out during the inspection of the vehicle.
Engine function test	An engine test run was performed.

## Value reducing factors

No.	Component group	Description
1	Roof	Roof - dent(s) - Smart repair

## Missing parts

### Description

Wheel / tyres - Spare wheel



## Order/Scope of order

The order was placed to prepare a sales report for the vehicle described. This includes the following:

- Description of core relevant information about the vehicle
- Documentation of equipment features  
*(Delivery by third-party service providers)*
- Documentation of damage, defects, missing parts
- Documentation of previous damage, unrepaired previous damage, repainting
- a brief visual or functional inspection of the equipment details if possible.  
*(Functional tests of driver assistance systems are not included in the scope of services!)*
- a photo documentation of the vehicle

## Basis for the order

This product is based on the guidelines for vehicle returns and valuations of light commercial vehicles from Alphabet Fuhrparkmanagement GmbH. The expert makes the explicit findings in each individual case objectively within the framework of the specified standards based on his or her own expertise.

The vehicle inspection takes place in a disassembled state.

Damage or defects that can only be detected during disassembly/diagnosis work or through advanced knowledge remain within the scope of the prognosis risk. An extended risk exists for concealed defects caused by fraudulent deception and not identifiable by the expert.

Damage or defects resulting from normal use or wear and tear of the vehicle will be accepted according to the applicable standard.

There was no explicit identification or monetary consideration of the expected features within the product.

Features which in their nature and severity slightly exceed normal use but do not constitute unacceptable damage will be documented and identified under signs of use if necessary.

Damage or defects that can no longer be attributed to normal use or wear and tear according to the underlying standard are listed in the product under value-reducing factors.

Depending on the product specification, a monetary ID can be provided. If this takes place, the costs can be 100% d or pro rata depending on the vehicle's age and mileage.

## Previous damages

Apparently, no repaired previous damage could be found on the vehicle.





Figure 1: Diagonal front (left)



Figure 2: Diagonal front (right)



Figure 3: Diagonal rear (left)



Figure 4: Diagonal rear (right)



Figure 5: Interior - front



Figure 6: Interior - rear





Figure 7: Instrument cluster



Figure 8: Instrument panel



Figure 9: Interior 360° view



Figure 10: Cargo area

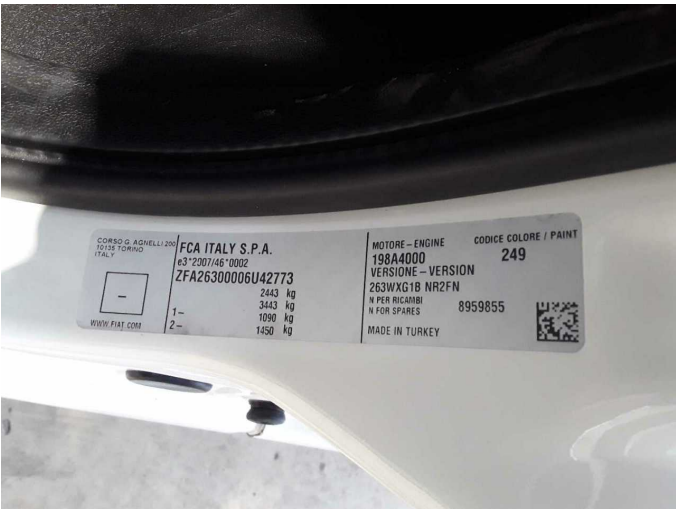


Figure 11: VIN



Figure 12: Mounted tyres





Figure 13: Documents



Figure 14: Documents

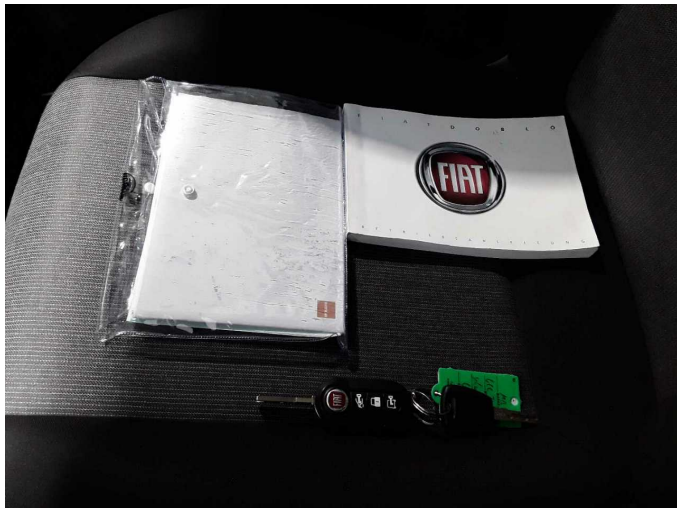


Figure 15: Documents



Figure 16: Misc.



Figure 17: Misc.



Figure 18: Misc.



Figure 19: Misc.



Figure 20: Misc.



Damage 1: Roof: Roof - dent(s) - Smart repair



Damage 1: Roof: Roof - dent(s) - Smart repair





# Wartungshistorie

(gemäß Auftraggeber Informationen)

Fahrgestellnummer: ZFA26300006U42773  
Hersteller / Modell: FIAT FIAT Doblo Cargo Natural Power SX

Datum	KM-Stand	Beschreibung
19.06.2025	16.559	HU + AU; Motoröl b. Wartung; Ölfilter ern; Ölwechsel; Wartung Sonstiges
29.07.2024	15.286	Bremse Sonstiges; Bremsflüssigkeit; Luftfiltereinsatz ern; Motoröl b. Wartung; Ölfilter ern; Regelwartungsdienst; Wartung Sonstiges
01.07.2023	10.536	HU + AU; Motoröl b. Wartung; Regelwartungsdienst
09.09.2022	3.248	Luftfiltereinsatz ern; Motoröl b. Wartung; Regelwartungsdienst; Zündkerzen ern