



ALFA ROMEO MITO

MiTo 1.3 JTDm Start & Stop 95 Selective

VIN NO ZAR95500001134205
Registration Number EP403VJ



MOT Date	Number of Owners	Number of Keys	Odometer Reading
-	-	1	156680 km
Last Service	Last Service Mileage	First Registration Date	Country First Registered
-	-	2011-02-15	-

Inspection Report Summary

Customer	BCAuto Encheres	Report Number	P20250703173557
Inspection Date / Place	2025-07-03 / BCA BETHUNE	Cosmetic Grade	3

Vehicle Summary

Vehicle Condition	Non-Runner	VAT Type	Exempt Rate
Fuel Type	Diesel	Gearbox Type	Manual
Colour	Black	Engine Size (cc)	1248
Engine Size	1.2	No of Doors	3
Body Type	Hatchback	Drive Train	Front
Seat Colour		No of Seats	4
Charging Cables		NEDC CO2 Rating (q/km)	104

Vehicle History & Documents

Service Book Available	Present	Next Service Mileage	km
Previous Usage	Normal Use	Imported	No
Manufacturer Warrenty			



Equipment

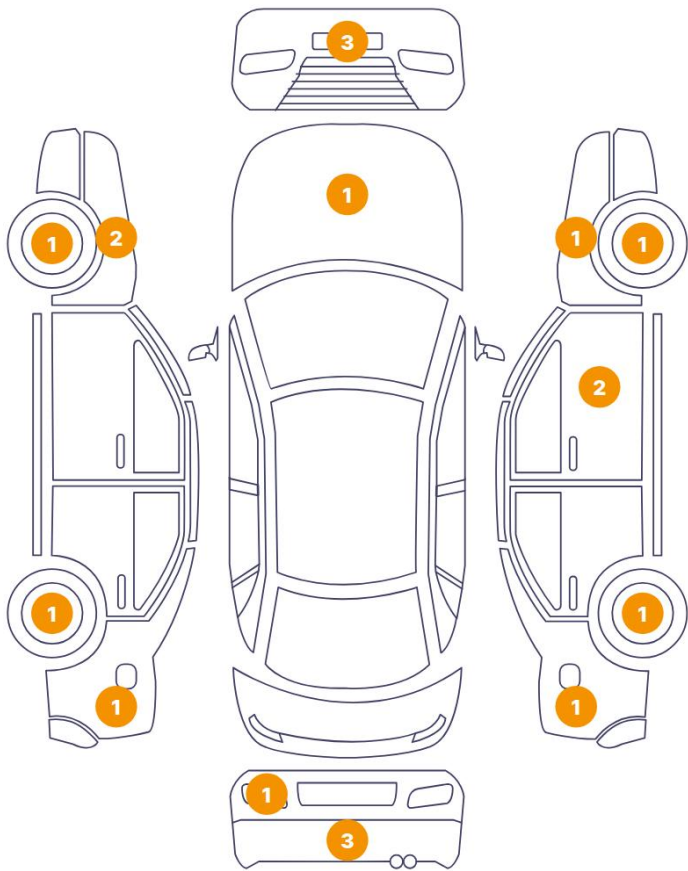
Central locking	Alloys wheels	Power assisted steering	Radio
Stability control			

Equipment Details

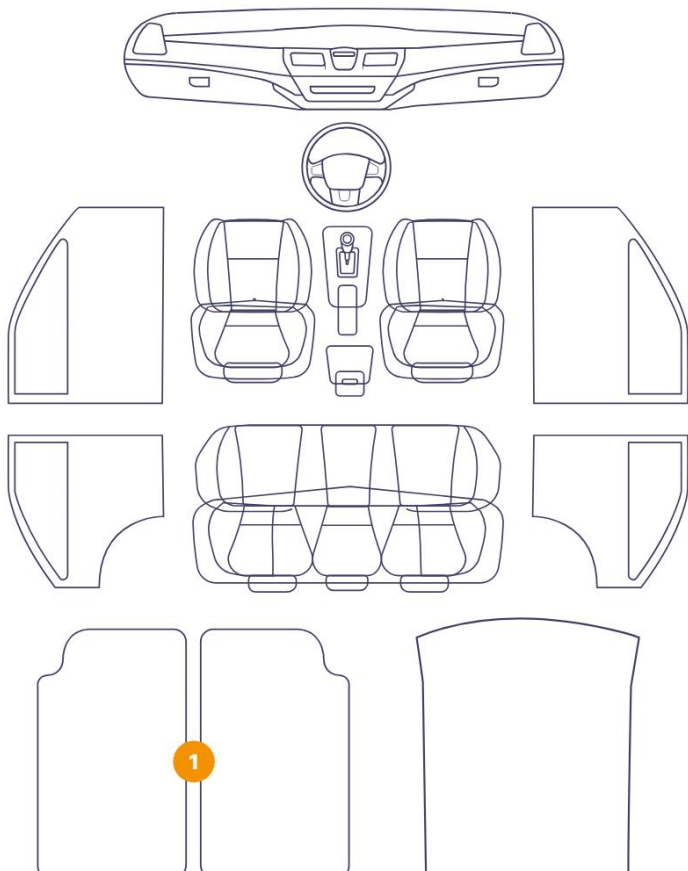
Seat Heating	No	Air Conditioning	Yes
Sunroof Type	Tilt/Slide Steel		

Cosmetic Damage

19 Dommages



1 Dommages



Component		Damage	Comments
1	Floor Carpet	Interior / Holed	
2	Hood	Paint / Chipping	
3	Corner Bumper / Front Right	Paint / Scratch / Scuff	
4	Bumper / Front	Paint / Scratch / Scuff	
5	Corner Bumper / Front Left	Paint / Scratch / Scuff	
6	Fender / Front Left	Bodywork / Dent / Dent	
7	Fender / Front Left	Paint / Scratch / Line	
8	Side Panel / Back Left	Paint / Scratch / Line	
9	Rim / Front Left	Out of Bodywork / Scratch	
10	Rim / Back Left	Out of Bodywork / Scratch	
11	Back Light / Left	Paint / Chipping	
12	Corner Bumper / Back Left	Paint / Scratch / Scuff	
13	Bumper / Back	Paint / Scratch / Scuff	

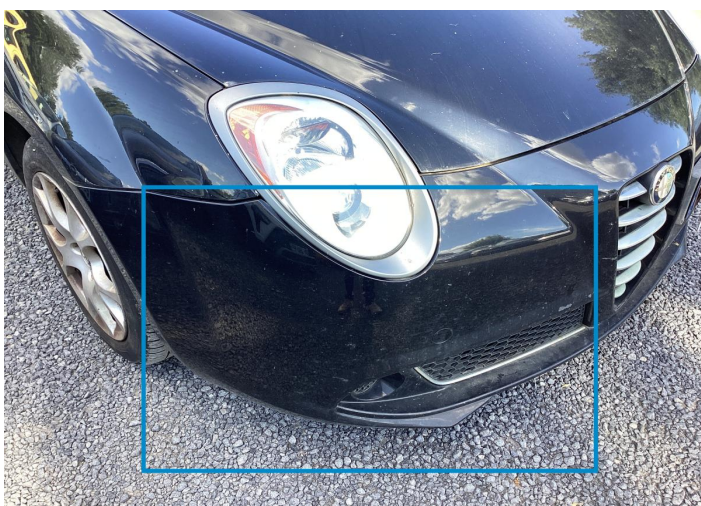
14	Corner Bumper / Back Right	Paint / Scratch / Scuff
15	Rim / Back Right	Out of Bodywork / Scratch
16	Side Panel / Back Right	Paint / Scratch / Line
17	Door / Front Right	Paint / Scratch / Line
18	Mirror / Front Right	Paint / Scratch / Scuff
19	Fender / Front Right	Paint / Scratch / Line
20	Rim / Front Right	Out of Bodywork / Scratch



1. Floor Carpet
Interior / Holed -



2. Hood
Paint / Chipping -



3. Corner Bumper / Front Right
Paint / Scratch / Scuff -



4. Bumper / Front
Paint / Scratch / Scuff -



5. Corner Bumper / Front Left
Paint / Scratch / Scuff -



6. Fender / Front Left
Bodywork / Dent / Dent -



7. Fender / Front Left
Paint / Scratch / Line -



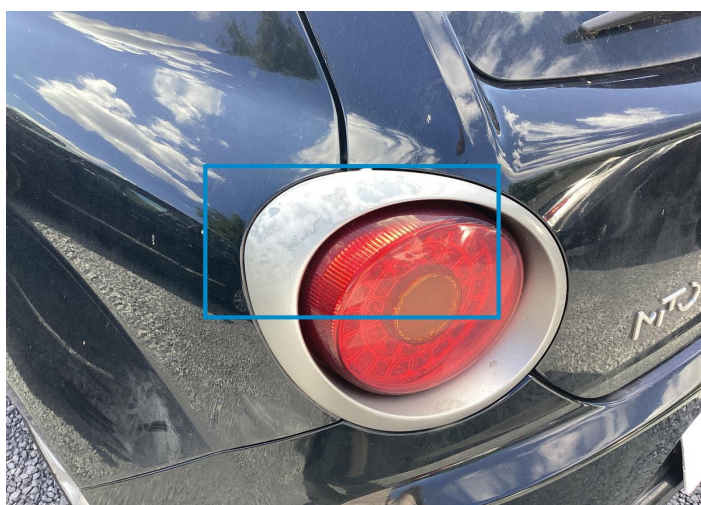
8. Side Panel / Back Left
Paint / Scratch / Line -



9. Rim / Front Left
Out of Bodywork / Scratch -



10. Rim / Back Left
Out of Bodywork / Scratch -



11. Back Light / Left
Paint / Chipping -



12. Corner Bumper / Back Left
Paint / Scratch / Scuff -



13. Bumper / Back
Paint / Scratch / Scuff -



14. Corner Bumper / Back Right
Paint / Scratch / Scuff -



15. Rim / Back Right
Out of Bodywork / Scratch -



16. Side Panel / Back Right
Paint / Scratch / Line -



17. Door / Front Right
Paint / Scratch / Line -



18. Mirror / Front Right
Paint / Scratch / Scuff -



19. Fender / Front Right
Paint / Scratch / Line -



20. Rim / Front Right
Out of Bodywork / Scratch -

Mechanical Condition

Tyres

Presence Anti-Theft Lock Nut 

 *No troubles detected, good condition or correct tests, according to vehicle age and mileage*

 *Damages or malfunction detected that requires repairs by the buyer*

 *Not applicable*

 *Not tested*

Disclaimer Section

The test drive is done on a flat surface and lasts about 2 minutes. The driven distance is a minimum of 300 meters, including a u-turn, an acceleration and a braking phase. The highest speed achieved during this test is 50km/h. The mechanical check is a visual and dynamic diagnosis without any disassembly. We cannot guarantee any mechanical wear part.