



ALFA ROMEO 147

147 1.6 Twin Spark

VIN NO ZAR93700003338538
Registration Number 0003338538



MOT Date	Number of Owners	Number of Keys	Odometer Reading
-	2	2	72364 km
Last Service	Last Service Mileage	First Registration Date	Country First Registered
-	-	2006-05-19	-

Inspection Report Summary

Customer	BCA Online	Report Number	P20251008145743
Inspection Date / Place	2025-10-08 / Dürkop Braunschweig	Cosmetic Grade	3

Vehicle Summary

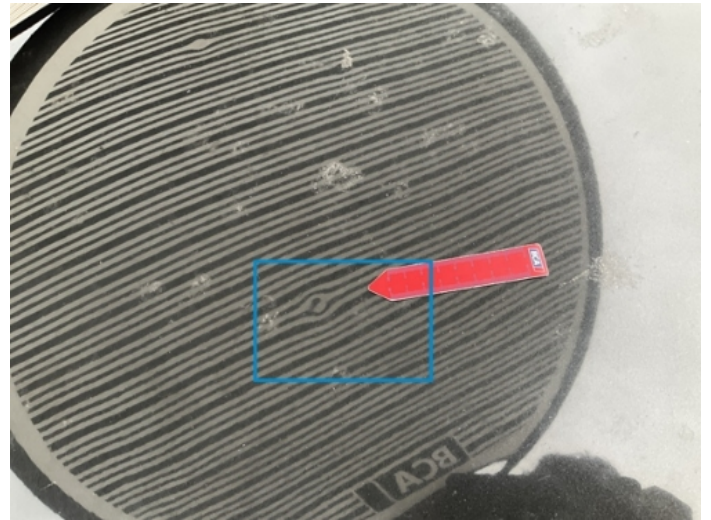
Vehicle Condition	Non-Runner	VAT Type	Margin
Fuel Type	Petrol	Road Worthy	Unknown
Colour	Black	Engine Size (cc)	1598
Engine Size	1.6	No of Doors	5
Body Type	Sedan	Drive Train	Front
Seat Colour		No of Seats	5
Seat Covering Name		Seat Covering	Cloth
Charging Cables		NEDC CO2 Rating (q/km)	194
Gearbox Type	Manual		

Vehicle History & Documents

Service Book Available	Missing	Next Service Mileage	km
Previous Usage		Imported	No
Manufacturer Warrenty			







Equipment

Alloys wheels	Enhanced speaker system	Heated wing mirrors	Stability control
Leather steering wheel	Anti-lock braking	Front fog lamps	Remote adjusting wing mirrors
Central locking	Radio		

Equipment Details

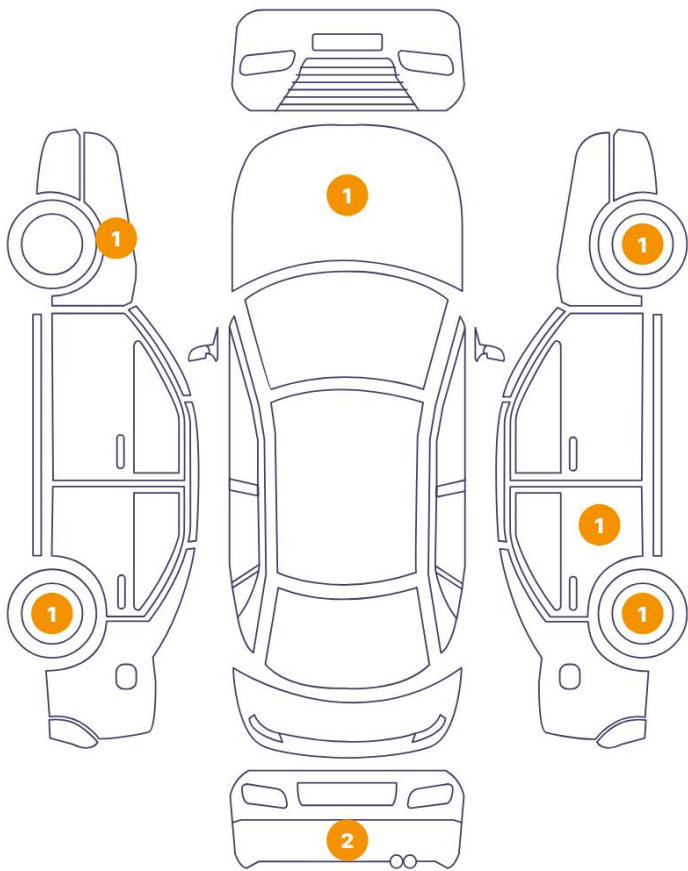
Air Conditioning	Yes	Alloy Wheel Size	17
Seat Heating	No		

Wheels & Tyres

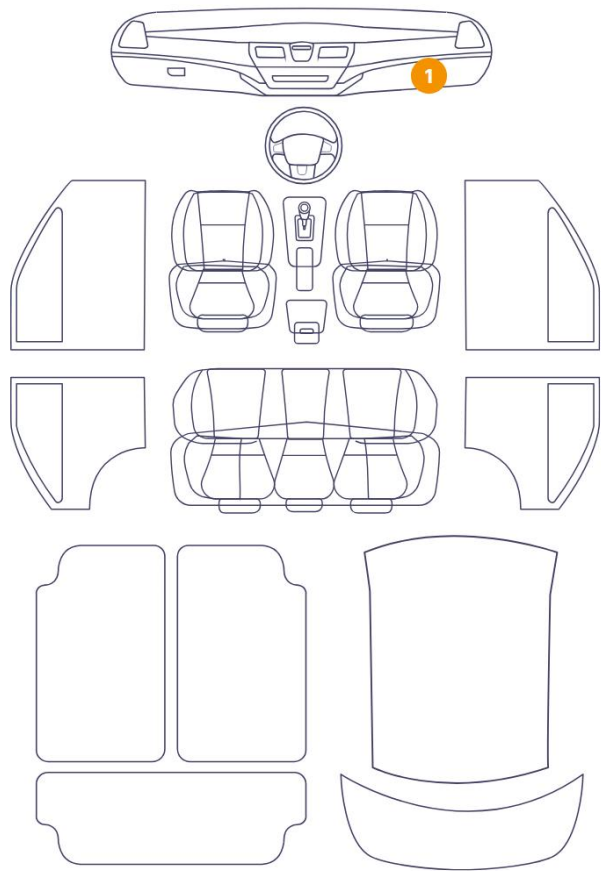
Right Front Tyre Depth	6	Left Front Tyre Depth	6
Right Rear Tyre Depth	5	Left Rear Tyre Depth	5

Cosmetic Damage

8 Schäden



1 Schäden



Component		Damage	Comments
1	Rim / Front Right	Out of Bodywork / Scratch	
2	Bumper / Back	Paint / Scratch / Scuff	
3	Center Console	Interior / Broken	
4	Rim / Back Right	Out of Bodywork / Scratch	
5	Door / Back Right	Paint / Scratch / Scuff	
6	Bumper / Back	Paint / Scratch / Scuff	
7	Rim / Back Left	Out of Bodywork / Scratch	
8	Fender / Front Left	Paint / Scratch / Scuff	
9	Hood	Bodywork / Dent / Dent	



1. Rim / Front Right
Out of Bodywork / Scratch -



2. Bumper / Back
Paint / Scratch / Scuff -



3. Center Console
Interior / Broken -



4. Rim / Back Right
Out of Bodywork / Scratch -



5. Door / Back Right
Paint / Scratch / Scuff -



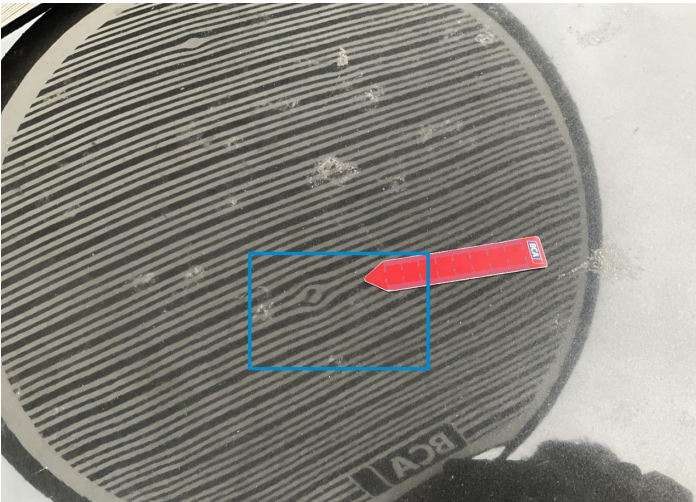
6. Bumper / Back
Paint / Scratch / Scuff -



7. Rim / Back Left
Out of Bodywork / Scratch -



8. Fender / Front Left
Paint / Scratch / Scuff -



9. Hood
Bodywork / Dent / Dent -

Mechanical Condition

Control Lights

Display Defect



Service Light



Hybrid/EV

Hybrid System Fault

NA

Engine

Engine Starts

NA

Engine Leak Visible

NA

Equipments Test

Central Locking

NA

Electric Windows

NA

Audio Equipment

NA

AC / Heating System

NA

Levels

Brakes Fluid

NA

Coolant Fluid

NA

Test Drive Inspection

Steering Wheel

Steering | Noise / Anomaly

NA

Engine

Engine Noise

NA

The Gears Scratch / Skip /
Abnormal Operation

NA

Fume Quantity

NA

Power Loss

NA

Clutch

Clutch Functioning

NA

Brake

Brake System Anomaly

NA

General


Test Driven Status

NA

 **No troubles detected, good condition or correct tests, according to vehicle age and mileage**

 **Damages or malfunction detected that requires repairs by the buyer**

 **Not applicable**

 **Not tested**

Disclaimer

Please also note the "UserGuide condition report", which shows the scope of the vehicle description.

[User Guide](#)