



MASERATI Ghibli

VIN NO ZAMZS57B001373056
Registration Number GPKW5000



| | | | |
|--------------|----------------------|-------------------------|--------------------------|
| MOT Date | Number of Owners | Number of Keys | Odometer Reading |
| 2024-07-01 | 1 | 2 | 53420 km |
| Last Service | Last Service Mileage | First Registration Date | Country First Registered |
| 2024-06-11 | 42495 | 2021-07-01 | Germany |

Inspection Report Summary

| | | | |
|-------------------------|-----------------------------|----------------|-----------------|
| Customer | BCA Online | Report Number | P20250814115152 |
| Inspection Date / Place | 2025-08-14 / BCA Heidenheim | Cosmetic Grade | 3 |

Vehicle Summary

| | | | |
|--------------------|-----------|--------------------|------------|
| Vehicle Condition | Runner | VAT Type | Qualifying |
| Fuel Type | Petrol | Road Worthy | Yes |
| Colour | Black | Engine Size (cc) | 3799 |
| Engine Size | 3.8 | No of Doors | 4 |
| Body Type | Sedan | Drive Train | Rear |
| Seat Colour | | No of Seats | 5 |
| Seat Covering Name | Schwarz | Seat Covering | Leather |
| Charging Cables | | WLTP CO2 Emissions | |
| Gearbox Type | Automatic | | |

Vehicle History & Documents

| | | | |
|------------------------|---------|----------------------|----|
| Service Book Available | Present | Next Service Mileage | km |
| Previous Usage | | Imported | No |
| Manufacturer Warrenty | | | |







Equipment

| | | | |
|-----------------------------------|------------------------|-------------------------------|-----------------------|
| Tinted Glass | USB Socket | Airbag Status | Anti-lock braking |
| Bluetooth telephone interface | Digital Radio | Remote adjusting wing mirrors | Reversing Camera |
| Split folding rear seats | Stability control | Electrically adjustable seats | Keyless Entry |
| LED Headlamps | Rear parking sensors | Trip Computer | 360°camera |
| Alloys wheels | AppleCarPlay | Cruise control | Front parking sensors |
| Remote central locking | Satellite navigation | Sports seats | Sunroof |
| Electrically folding wing mirrors | Leather steering wheel | Radio | |

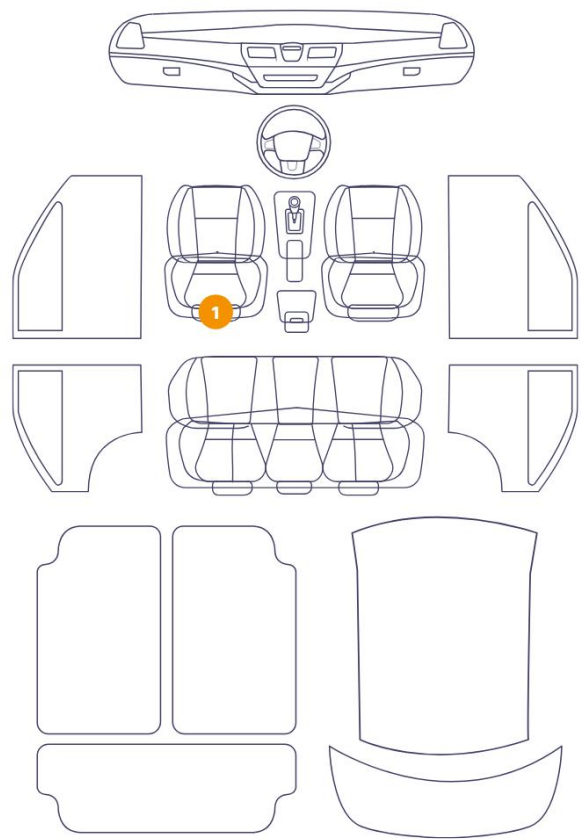
Equipment Details

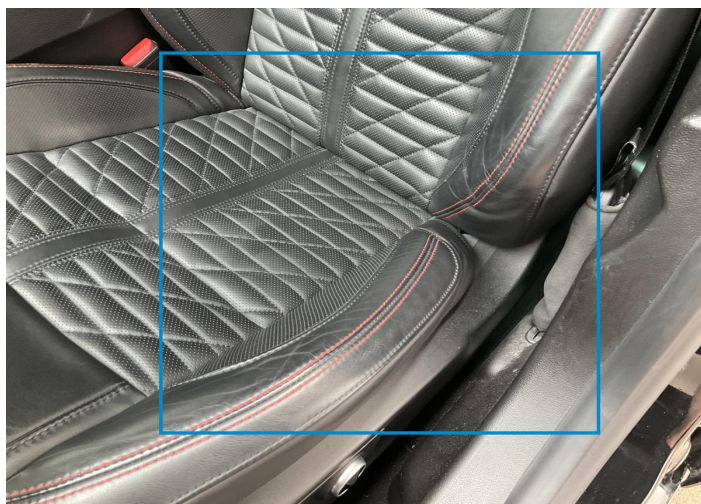
| | | | |
|------------------|---------------------------|------------------|------------------|
| Air Conditioning | Dual Zone Climate Control | Alloy Wheel Size | 21 |
| Seat Heating | Front and Rear | Sunroof Type | Tilt/Slide Glass |

Wheels & Tyres

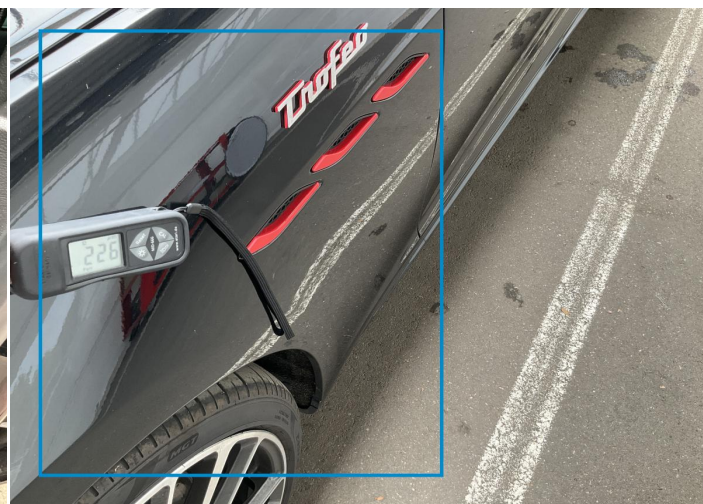
| | | | |
|-----------------------|---|------------------------|---|
| Left Front Tyre Depth | 7 | Right Front Tyre Depth | 6 |
| Right Rear Tyre Depth | 3 | Left Rear Tyre Depth | 3 |

1 Schäden

6/10 - Report Number P20250814115152



1. Seat / Front Left
Interior / Worn - out -



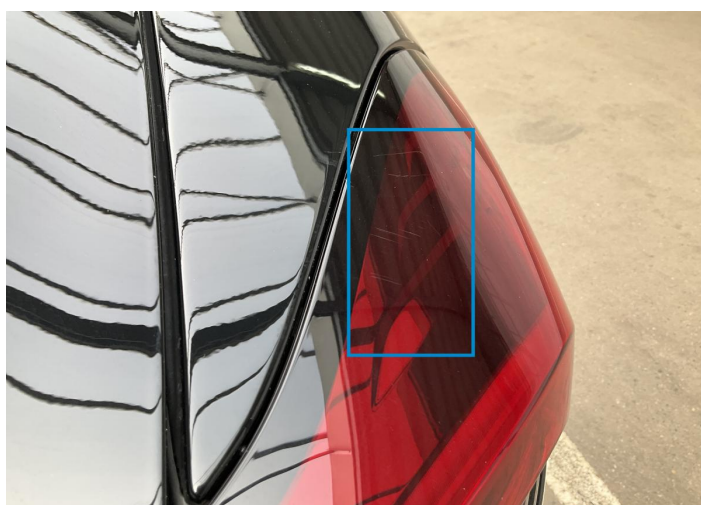
2. Fender / Front Left
Paint / Poor Previous Repair -



3. Bumper / Front
Paint / Scratch / Scuff -



4. Hood
Paint / Poor Previous Repair -



5. Back Light / Right
Glass Break -



6. Pillar / Back Right
Bodywork / Dent / Dent -



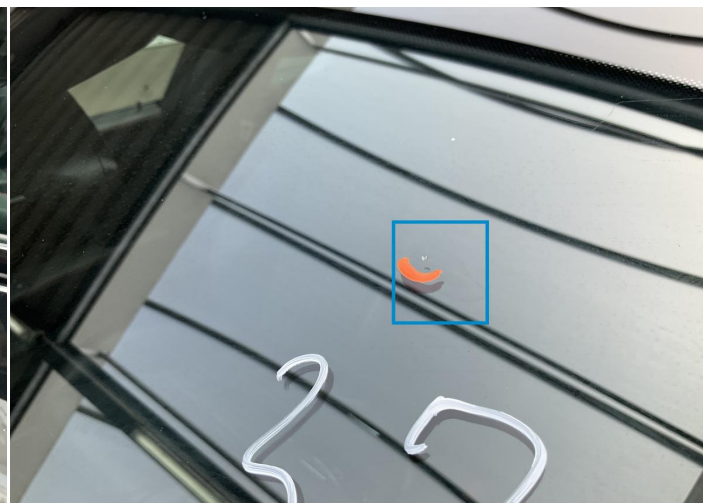
7. Side Panel / Back Left
Paint / Poor Previous Repair -



8. Door / Front Left
Bodywork / Dent / Dent -



9. Mirror Shell / Front Left
Paint / Scratch / Scuff -



10. Windshield / Front
Glass Break / Impact -

Mechanical Condition

Control Lights

| | | | |
|--|---|---------------------------------|---|
| Display Defect | ✓ | ABS Warning Light | ✓ |
| ESP Fault/Traction Control Malfunction Light | ✓ | Airbag Warning Light | ✓ |
| Oil Pressure Warning Light | ✓ | Brake Warning Light | ✓ |
| Power Steering Warning Light | ✓ | Alternator / Battery | ✓ |
| No Dashboard Lights | ✓ | Tire Pressure Monitoring System | ✓ |

Equipments Test

| | | | |
|---------------------------------------|---|---------------------|---|
| Main & Spare Keys Functioning | ✓ | Electric Windows | ✓ |
| Navigation System | ✓ | Audio Equipment | ✓ |
| Parking Sensors / Cameras Functioning | ✓ | AC / Heating System | ✓ |

Engine

| | | | |
|---------------------|---|---------------------|---|
| Engine Status / EML | ✓ | Engine Leak Visible | ✓ |
| Engine Starts | ✓ | | |

Gearbox

| | |
|----------|---|
| Gear Box | ✓ |
|----------|---|

Levels

| | | | |
|--------------|---|---------------|---|
| Brakes Fluid | ✓ | Coolant Fluid | ✓ |
|--------------|---|---------------|---|

Test Drive Inspection

| Steering Wheel | | | |
|--|---|---|---|
| Steering Noise / Anomaly | | ✓ | |
| Engine | | | |
| Engine Noise | ✓ | The Gears Scratch / Skip / Abnormal Operation | ✓ |
| Fume Quantity | ✓ | Power Loss | ✓ |
| Brake | | | |
| Brake System Anomaly | | ✓ | |
| General | | | |
| Test Driven Status | | ✓ | |
| ✓ <i>No troubles detected, good condition or correct tests, according to vehicle age and mileage</i> | | | |
| ! <i>Damages or malfunction detected that requires repairs by the buyer</i> | | | |
| NA <i>Not applicable</i> | | | |
| = <i>Not tested</i> | | | |

Disclaimer

Please also note the "UserGuide condition report", which shows the scope of the vehicle description.

[User Guide](#)