



JEEP Compass

Compass 1.5 GSE T4 48V e-Hybrid Automatik

VIN NO ZACNJECA8PPS79879
Registration Number A8PPS79879



MOT Date	Number of Owners	Number of Keys	Odometer Reading
2025-02-01	1	2	14747 km
Last Service	Last Service Mileage	First Registration Date	Country First Registered
-	-	2024-02-28	Germany

Inspection Report Summary

Customer	BCA Online	Report Number	P20251006103510
Inspection Date / Place	2025-10-06 / BCA Berlin	Cosmetic Grade	1

Vehicle Summary

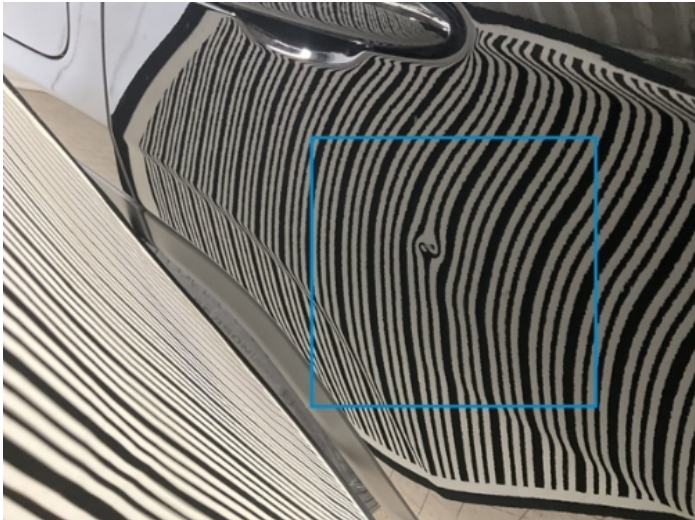
Vehicle Condition	Runner	VAT Type	Qualifying
Fuel Type	Petrol	Road Worthy	Unknown
Colour	Black	Engine Size (cc)	1469
Engine Size	1.5	No of Doors	5
Body Type	SUV	Drive Train	Front
Seat Colour		No of Seats	5
Seat Covering Name	anthrazit	Seat Covering	Cloth/Synthetic Leather
Charging Cables		WLTP CO2 Emissions	
Gearbox Type	Automatic		

Vehicle History & Documents

Service Book Available	Present	Next Service Mileage	km
Previous Usage	Rental Car	Imported	No
Manufacturer Warrenty			







Equipment

Tinted Glass	Alloys wheels	Cruise control	Front fog lamps
Remote adjusting wing mirrors	Reversing Camera	Satellite navigation	Stability control
Electrically folding wing mirrors	LED Headlamps	Rear parking sensors	Airbag Status
Anti-lock braking	Digitaldashboard	Front parking sensors	Remote central locking
Roof rails	Split folding rear seats	Sunroof	Electrictailgate

Radio

Equipment Details

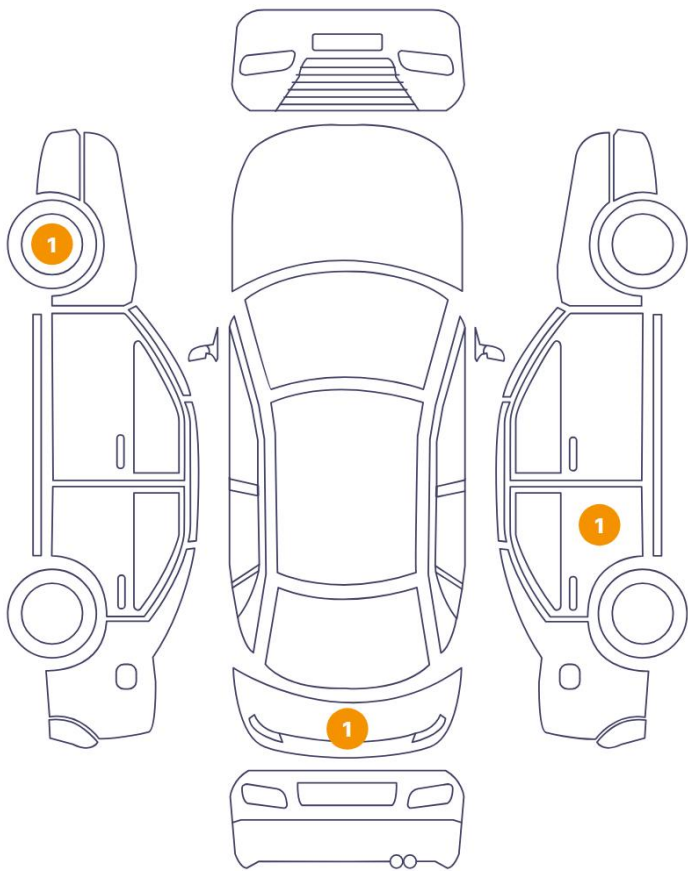
Air Conditioning	Dual Zone Climate Control	Alloy Wheel Size	19
Seat Heating	Front	Sunroof Type	Opening Panoramic

Wheels & Tyres

Left Rear Tyre Depth	6	Right Front Tyre Depth	6
Left Front Tyre Depth	5	Right Rear Tyre Depth	6

Cosmetic Damage

3 Schäden



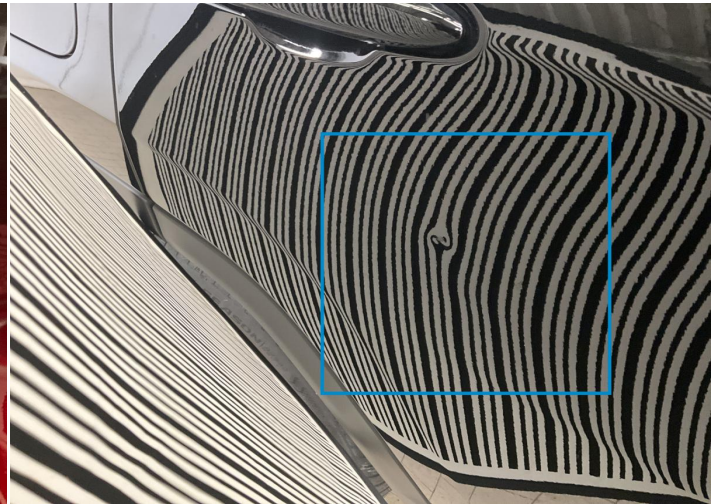
0 Schäden



Component		Damage	Comments
1	Tailgate	Paint / Scratch / Scuff	
2	Door / Back Right	Bodywork / Dent / Dent	
3	Rim / Front Left	Out of Bodywork / Scratch	



1. Tailgate
Paint / Scratch / Scuff -



2. Door / Back Right
Bodywork / Dent / Dent -



3. Rim / Front Left
Out of Bodywork / Scratch -

Mechanical Condition

Control Lights

ABS Warning Light	✓	ESP Fault/Traction Control Malfunction Light	✓
Airbag Warning Light	✓	Oil Pressure Warning Light	✓
Brake Warning Light	✓	Power Steering Warning Light	✓
Alternator / Battery	✓	No Dashboard Lights	✓
Display Defect	✓	Tire Pressure Monitoring System	!

Engine

Engine Status / EML	✓	Engine Leak Visible	✓
Engine Starts	✓		

Equipments Test

Electric Windows	✓	Navigation System	✓
Audio Equipment	✓	AC / Heating System	✓
Main & Spare Keys Functioning	✓	Parking Sensors / Cameras Functioning	✓
Other Equipments	✓		

Levels

Brakes Fluid	✓	Coolant Fluid	✓
--------------	---	---------------	---

Hybrid/EV

Hybrid System Fault	✓
---------------------	---

Test Drive Inspection

Steering Wheel

Steering | Noise / Anomaly

Engine

Engine Noise The Gears Scratch / Skip / Abnormal Operation

Fume Quantity Power Loss

Brake

Brake System Anomaly

General

Test Driven Status

No troubles detected, good condition or correct tests, according to vehicle age and mileage

Damages or malfunction detected that requires repairs by the buyer

Not applicable

Not tested

Disclaimer

Please also note the "UserGuide condition report", which shows the scope of the vehicle description. [User Guide](#)