



JEEP Compass

Compass 1.3 T-GDI 4xe PLUG-IN HYBRID Automatik

VIN NO ZACNJDEWXLPR04439
Registration Number WXLPR04439



MOT Date	Number of Owners	Number of Keys	Odometer Reading
-	1	2	70048 km
Last Service	Last Service Mileage	First Registration Date	Country First Registered
2023-10-18	50567	2020-10-14	Germany

Inspection Report Summary

Customer	BCA Online	Report Number	P20250922132746
Inspection Date / Place	2025-09-22 / BCA Berlin	Cosmetic Grade	2

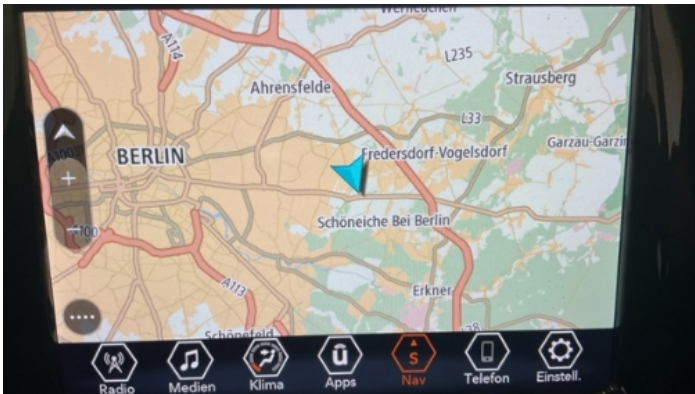
Vehicle Summary

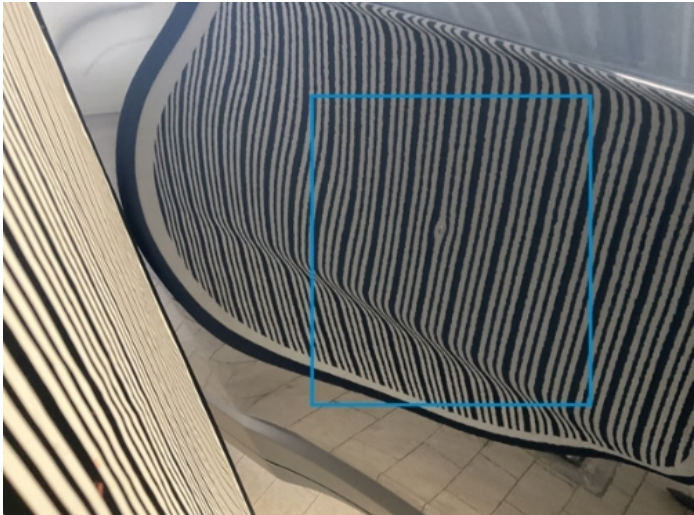
Vehicle Condition	Runner	VAT Type	Qualifying
Fuel Type	Plug - in Hybrid Electric Vehicle Petrol	Road Worthy	Unknown
Colour	Blue	Engine Size (cc)	1332
Engine Size	1.3	No of Doors	5
Body Type	SUV	Drive Train	All-Wheel-Drive switchable
Seat Colour		No of Seats	5
Seat Covering Name	Schwarz	Seat Covering	Leather
Charging Cables	Occasional Use Charge	NEDC CO2 Rating (q/km)	48
Gearbox Type	Automatic		

Vehicle History & Documents

Service Book Available	Present	Next Service Mileage	km
Previous Usage		Imported	No
Manufacturer Warrenty			







Equipment

Tinted Glass	Alloys wheels	Cruise control	Front parking sensors
Remote central locking	Roof rails	Stability control	Electrically adjustable seats
Electrictailgate	Rear parking sensors	Airbag Status	Anti-lock braking
Front fog lamps	Remote adjusting wing mirrors	Reversing Camera	Satellite navigation
Xenon headlamps	Electrically folding wing mirrors	Radio	

Equipment Details

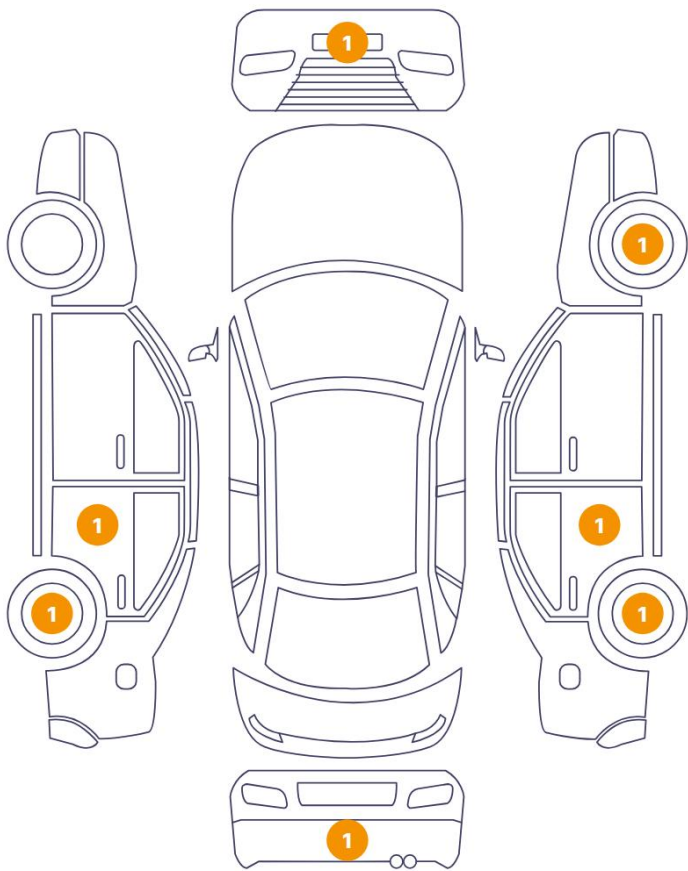
Air Conditioning	Dual Zone Climate Control	Alloy Wheel Size	19
Seat Heating	Front		

Wheels & Tyres

Right Front Tyre Depth	7	Left Front Tyre Depth	6
Right Rear Tyre Depth	6	Left Rear Tyre Depth	6

Cosmetic Damage

7 Schäden



0 Schäden



Component		Damage	Comments
1	Rim / Front Right	Out of Bodywork / Scratch	
2	Bumper / Front	Bodywork / Dent / Dent	
3	Rim / Back Right	Out of Bodywork / Scratch	
4	Bumper / Back	Bodywork / Dent / Dent	
5	Door / Back Left	Bodywork / Dent / Dent	
6	Rim / Back Left	Out of Bodywork / Scratch	
7	Door / Back Right	Bodywork / Dent / Dent	



1. Rim / Front Right
Out of Bodywork / Scratch -



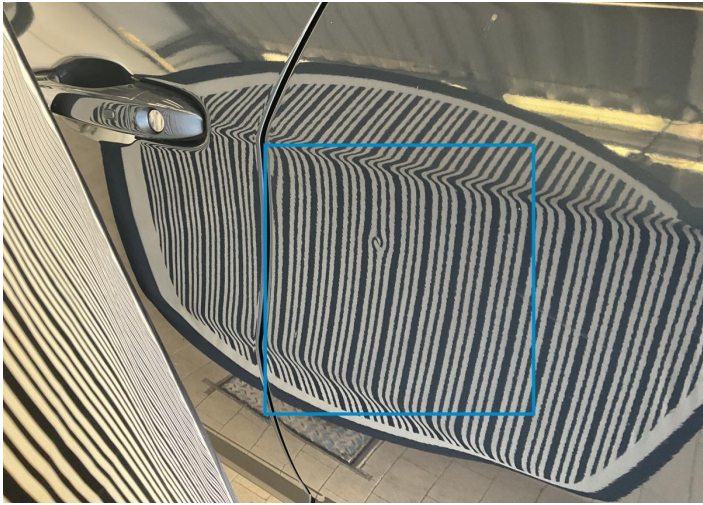
2. Bumper / Front
Bodywork / Dent / Dent -



3. Rim / Back Right
Out of Bodywork / Scratch -



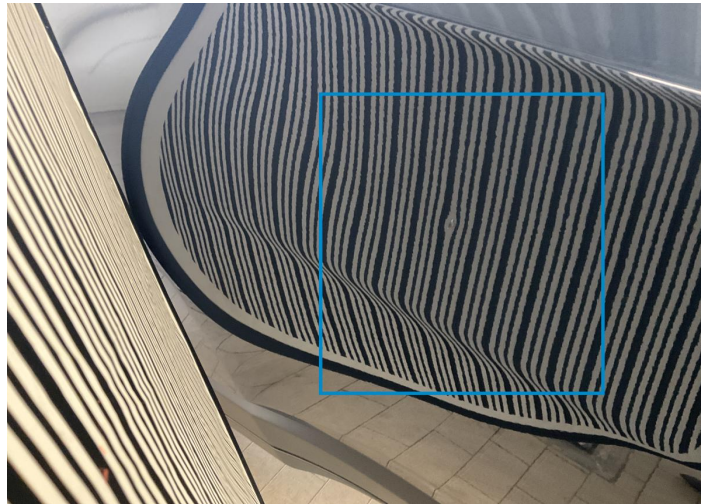
4. Bumper / Back
Bodywork / Dent / Dent -



5. Door / Back Left
Bodywork / Dent / Dent -



6. Rim / Back Left
Out of Bodywork / Scratch -



7. Door / Back Right
Bodywork / Dent / Dent -

Mechanical Condition

Control Lights

ABS Warning Light	✓	ESP Fault/Traction Control Malfunction Light	✓
Airbag Warning Light	✓	Oil Pressure Warning Light	✓
Brake Warning Light	✓	Power Steering Warning Light	✓
Alternator / Battery	✓	No Dashboard Lights	✓
Tire Pressure Monitoring System	✓	Display Defect	✓

Engine

Engine Status / EML	✓	Engine Leak Visible	✓
Engine Starts	✓		

Equipments Test

Audio Equipment	✓	AC / Heating System	✓
Main & Spare Keys Functioning	✓	Electric Windows	✓
Navigation System	✓	Parking Sensors / Cameras Functioning	✓
Other Equipments	✓		

Levels

Brakes Fluid	✓	Coolant Fluid	✓
--------------	---	---------------	---

Hybrid/EV

Charge Lead Condition	✓	Charge Port Condition	✓
Hybrid System Fault	✓		

Test Drive Inspection

Steering Wheel			
Steering Noise / Anomaly		✓	
Engine			
Engine Noise	✓	The Gears Scratch / Skip / Abnormal Operation	✓
Fume Quantity	✓	Power Loss	✓
Brake			
Brake System Anomaly		✓	
General			
Test Driven Status		✓	
✓ <i>No troubles detected, good condition or correct tests, according to vehicle age and mileage</i>			
! <i>Damages or malfunction detected that requires repairs by the buyer</i>			
NA <i>Not applicable</i>			
= <i>Not tested</i>			

Disclaimer

Please also note the "UserGuide condition report", which shows the scope of the vehicle description.

[User Guide](#)