



JEEP Compass

Compass 1.3 T-GDI 4xe PLUG-IN HYBRID Automatik

VIN NO ZACNJDEW9LPR04190
Registration Number W9LPR04190



MOT Date



Last Service



Number of Owners



Last Service Mileage



Number of Keys



First Registration Date



2020-10-30

Odometer Reading



49967 km

Country First Registered



Inspection Report Summary

Customer	BCA Online	Report Number	P20250923144030
Inspection Date / Place	2025-09-23 / BCA Berlin	Cosmetic Grade	3

Vehicle Summary

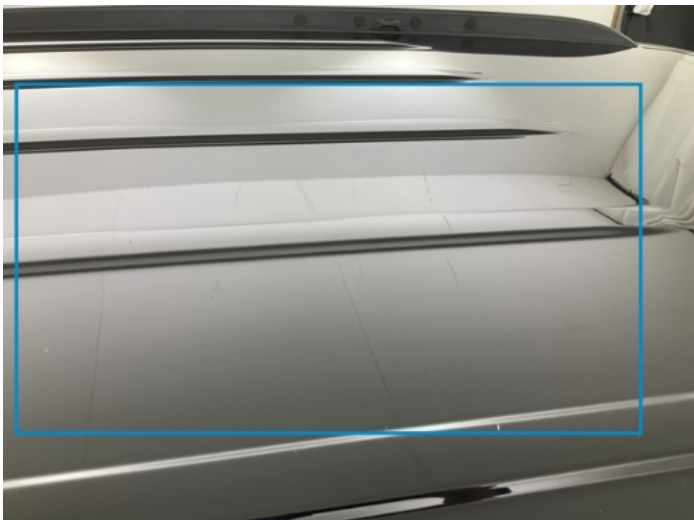
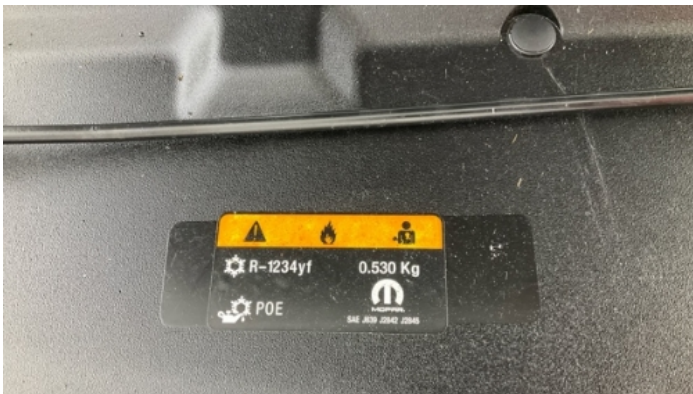
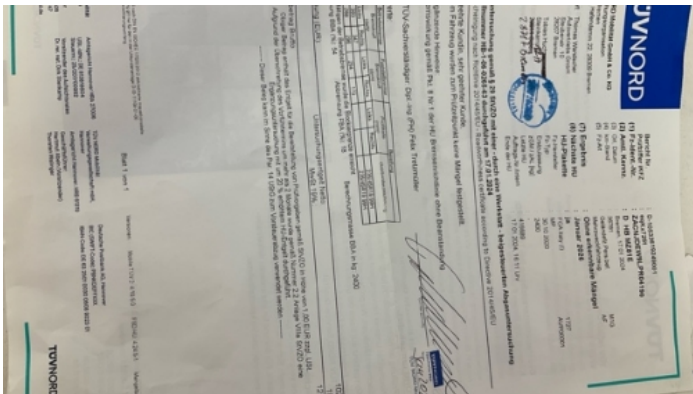
Vehicle Condition	Runner	VAT Type	Qualifying
Fuel Type	Plug - in Hybrid Electric Vehicle Petrol	Road Worthy	Unknown
Colour	Grey	Engine Size (cc)	1332
Engine Size	1.3	No of Doors	5
Body Type	SUV	Drive Train	All-Wheel-Drive switchable
Seat Colour		No of Seats	5
Seat Covering Name		Seat Covering	Synthetic Leather
Charging Cables	Occasional Use Charge	NEDC CO2 Rating (q/km)	48
Gearbox Type	Automatic		

Vehicle History & Documents

Service Book Available	Missing	Next Service Mileage	km
Previous Usage		Imported	
Manufacturer Warrenty			







Equipment

Tinted Glass	Trip Computer	Airbag Status	AndroidAuto
AppleCarPlay	Bluetooth telephone interface	Digital Radio	Front fog lamps
Remote adjusting wing mirrors	Reversing Camera	Split folding rear seats	Electrically adjustable seats
Electric tailgate	Leather steering wheel	Rear parking sensors	Traffic sign recognition
USB Socket	Alloys wheels	Anti-lock braking	Auxiliary Socket
Cruise control	Enhanced speaker system	Front parking sensors	Remote central locking
Satellite navigation	Stability control	Electrically folding wing mirrors	Internet/Connectivity
Rain sensitive windscreen wipers			

Equipment Details

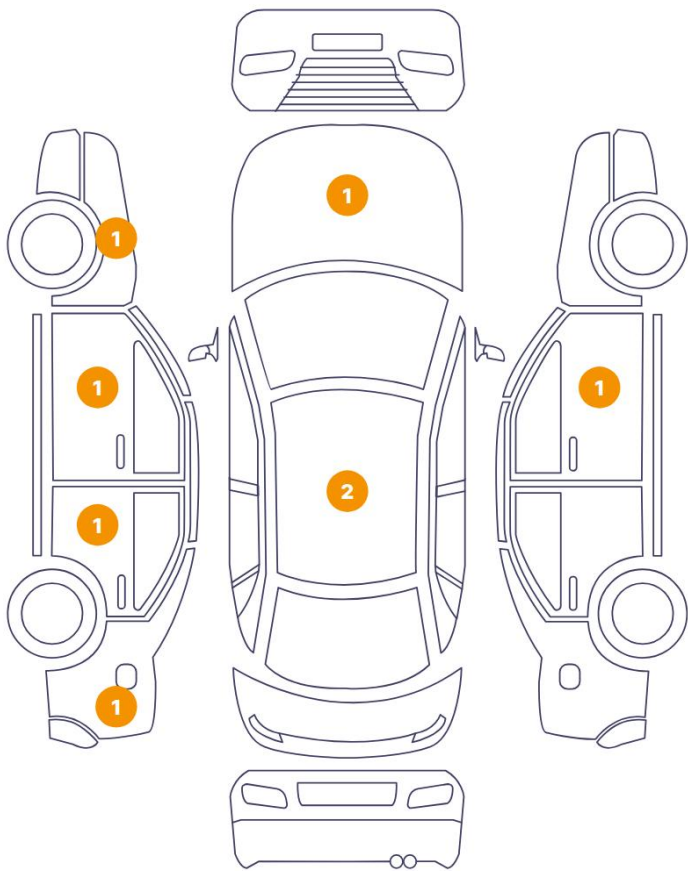
Air Conditioning	Dual Zone Climate Control	Alloy Wheel Size	19
Enhanced Speaker System	Alpine	Extra Wheel / Tyre Set	Summer Tyres

Wheels & Tyres

Extra Wheel - 1 Tyre Depth	5	Extra Wheel - 2 Tyre Depth	6
Extra Wheel - 3 Tyre Depth	5	Extra Wheel - 4 Tyre Depth	6
Right Front Tyre Depth	8	Left Front Tyre Depth	8
Right Rear Tyre Depth	8	Left Rear Tyre Depth	8

Cosmetic Damage

8 Schäden



0 Schäden



Component	Damage	Comments
1 Fender / Front Left	Paint / Poor Previous Repair	
2 Door / Front Left	Paint / Poor Previous Repair	
3 Door / Back Left	Paint / Poor Previous Repair	
4 Side Panel / Back Left	Paint / Poor Previous Repair	
5 Door / Front Right	Paint / Scratch / Scuff	
6 Hood	Paint / Poor Previous Repair	
7 Roof	Bodywork / Dent / Hail Area	
8 Roof	Paint / Scratch / Line	



1. Fender / Front Left
Paint / Poor Previous Repair -



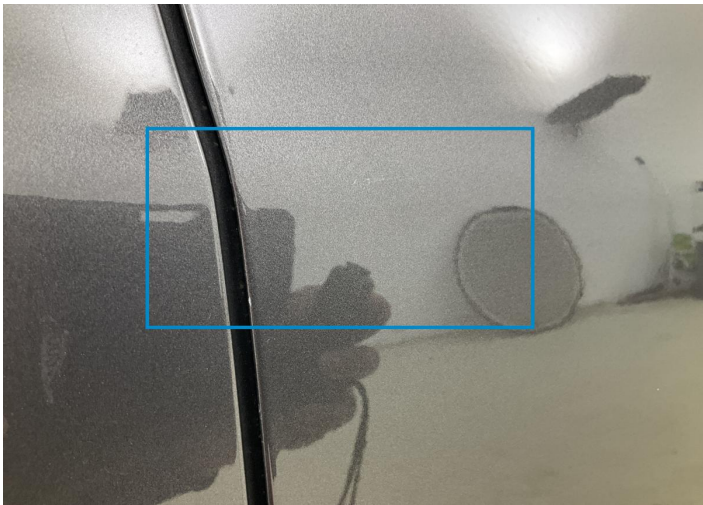
2. Door / Front Left
Paint / Poor Previous Repair -



3. Door / Back Left
Paint / Poor Previous Repair -



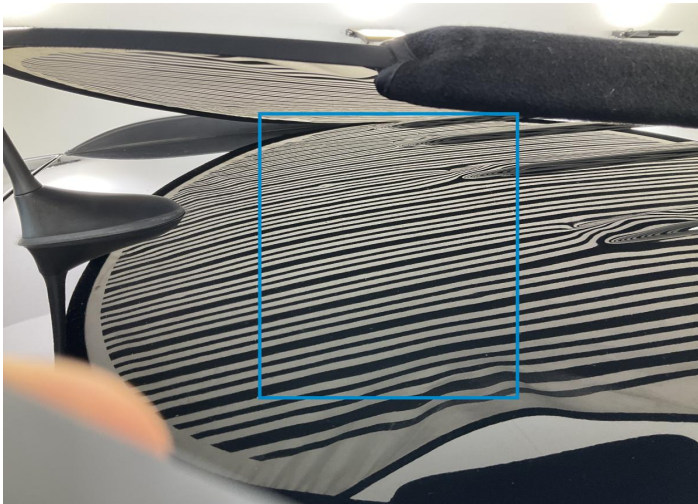
4. Side Panel / Back Left
Paint / Poor Previous Repair -



5. Door / Front Right
Paint / Scratch / Scuff -



6. Hood
Paint / Poor Previous Repair -



7. Roof
Bodywork / Dent / Hail Area -



8. Roof
Paint / Scratch / Line -

Mechanical Condition

Engine			
Engine Starts	✓	Engine Status / EML	✓
Engine Leak Visible	✓		
Control Lights			
ABS Warning Light	✓	ESP Fault/Traction Control Malfunction Light	✓
Airbag Warning Light	✓	Oil Pressure Warning Light	✓
Brake Warning Light	✓	Power Steering Warning Light	✓
Alternator / Battery	✓	No Dashboard Lights	✓
All - wheel Drive	✓	Display Defect	✓
Service Light	✓	Tire Pressure Monitoring System	✓
Gearbox			
Gear Box	✓		
Levels			
Brakes Fluid	✓	Coolant Fluid	✓
Hybrid/EV			
Hybrid System Fault	✓	Charge Lead Condition	✓
Charge Port Condition	✓		
Equipments Test			
Other Equipments	✓	Main & Spare Keys Functioning	✓
Electric Windows	✓	Navigation System	✓
Audio Equipment	✓	AC / Heating System	✓

Test Drive Inspection

Engine			
Engine Noise	✓	The Gears Scratch / Skip / Abnormal Operation	✓
Fume Quantity	✓	Power Loss	✓
Brake			
Brake System Anomaly	✓		
Steering Wheel			
Steering Noise / Anomaly	✓		
Clutch			
Clutch Functioning	✓		
General			
Test Driven Status	✓		

- ✓ *No troubles detected, good condition or correct tests, according to vehicle age and mileage*
- ! *Damages or malfunction detected that requires repairs by the buyer*
- NA *Not applicable*
- ☐ *Not tested*

Disclaimer

Please also note the "UserGuide condition report", which shows the scope of the vehicle description.

[User Guide](#)