



Expertise

Protocol number: 38105103  
Order No. / Reference: 24309209  
Inspection date: 22 Jan 2025

Manufacturer: Volvo

Model: V60 T8 AWD Recharge Geartronic RDesign

VIN: YV1ZWBMVDM1415281



Vehicle details	
Manufacturer / Type / Model / Equipment	
Volvo V60 T8 AWD Recharge Geartronic RDesign	
Vehicle Identification number	YV1ZWBMVDM1415281
Mileage (Read)	162,867 km
First registration	11 Aug 2020
Number of holders	2
Power / Engine displacement	223 kw / 1,969 ccm
Fuel type / Cylinder	Hybr.B/E ext. edition / 4
Gearbox / Number of gears	Automatic / 8
Type of drive	All-wheel drive
Type of vehicle	Station wagon
Colour / colour code	Crystal Weiß
Doors / Seats	5 / 5
Upholstery type	Leather
Colour of upholstery	Anthracite-Black



## Vehicle details

<b>Maintenance booklet / proof</b>	digital proof / complete	<b>Next maintenance in</b>	23,462 km
<b>Last maintenance on / at</b>	10/2024 at 156,329 km		
<b>Key is / should be</b>	2 / 2	<b>FZG documents</b>	ZB#2 (B) was available (copy), ZB#1 (S) was not available
		<b>LetterNo</b>	FU850957
<b>Previous damage / Accident</b>	Detectable	<b>Repainting</b>	None detectable
<b>Inspection conditions</b>	Sufficient	<b>lifting equipment / pit</b>	yes
<b>Test drive</b>	Not performed	<b>Engine function test</b>	Performed
<b>Manufacturer key number/ type code number</b>	9101 / BOA 00014		
<b>Emission standard</b>	EURO6;WLTP;AP;PI/CI; M, N1 I	<b>fine dust sticker</b>	
<b>Permitted total weight</b>	2,550 kg	<b>Empty weight</b>	

## Tyres

### Mounted tyres

#	Tyre size	Type of tyre	Manufacturer	Tread depth
1)	235/45 R18 98Y	Winter tyres on Light alloy	Goodyear	3mm / 3mm
2)	235/45 R18 98Y	Winter tyres on Light alloy	Dunlop	3mm / 3mm

### Additional tyres

#	Tyre size	Type of tyre	Manufacturer	Tread depth
1)	235/40 R19 96W	Summer tyres on Light alloy	Michelin	4mm / 4mm
2)	235/40 R19 96W	Summer tyres on Light alloy	Michelin	5mm / 5mm

### Replacement

Typ	Tyre size	Type of tyre	Manufacturer	Tread depth
	Tirefit	Expiration date 07/2028		

**Legend:** Tread depth indication for left-hand tires in first place, for right-hand tires in second place on the axle in the direction of travel

## Equipment

### Standard equipment

- ABS - anti-lock braking system
- Airbag driver and passenger side with two-stage trigger system
- exhaust system with two chrome-plated tailpipes
- Exterior mirrors electrically adjustable and heated
- Outside temperature display
- fog sensor
- on-board computer with vehicle control functions
- City Safety
- tinted glazing
- headliner in anthracite
- roof rails in high-gloss black (integrated)
- Drive Mode
- Driver Alert
- parking aid, rear
- Electronic differential lock Corner Traction Control (CTC)
- Electric windows front and rear
- automatic brake
- Front grill R-Design
- Floor mats: R-Design textile floor mats front and rear
- cruise control system with variable speed limit
- automatic tailgate (electric)
- Rear window wiper
- interior and exterior mirrors with automatic dimming
- ISOFIX mounts for the outer rear seats
- child safety lock (manual, rear doors)
- headrests (5)
- loading box under the cargo area floor
- stainless steel loading sill protection in the luggage compartment
- LED headlight "Thor's Hammer"
- Steering wheel: Multifunction buttons on the steering wheel in high-gloss black
- Rear center armrest (foldable) with cup holder
- Sensus navigation system
- mesh pocket in the passenger footwell
- Package: Winter Package
- Particle filter: petrol particle filter
- Upholstery: Leather/Mash-Textil sports seats
- Radio accessories: Apple CarPlay and Android Auto
- Radio accessories: Digital radio reception (DAB+)
- Radio accessories: Two USB-C interfaces on the back of the tunnel console
- Wheels: Tire pressure monitoring system (passive)
- Gear lever: Leather gear lever R-Design
- Safety braking system with disc brakes all around (internally ventilated)
- Seats: Adjustable leg rest for driver and passenger seat
- Seats: Driver's seat electrically adjustable
- Front passenger airbag can be deactivated
- all-wheel drive (AWD) with Instant Traction
- Ambient lighting
- electrically retractable exterior mirrors
- R-Design exterior mirrors in high-gloss black
- Hill Start Assist (HSA)
- Indicators (LED) integrated in exterior mirrors
- Brake light, third
- CleanZone air quality system
- Connected Safety
- roof edge spoiler
- Digital instrumentation 12.3" full-graphic display (31.2 cm diagonal, high resolution)
- Insoles: Metal Mesh
- Aluminum door sills with Recharge lettering at the front
- ESC driving dynamics control
- window frame in high-gloss black
- Front and rear apron R-Design
- wireless remote control with leather case
- luggage compartment partition net
- Transmission: 8-speed Geartronic
- rear window, heated
- IDIS (Intelligent Driver Information System)
- interior lighting
- Keyless Drive (electronic access system)
- Automatic air conditioning
- Rear headrests foldable, electrically
- Charging cable Schuko/Type 2 (Mode 2), 7 m length, 1-phase, 10 A
- cargo area roller blind
- steering wheel adjustable in height and length
- Steering wheel: sports leather steering wheel
- Make-up mirror for driver and passenger, illuminated
- Front center armrest with integrated storage compartment and cup holders
- emergency brake lights
- parking brake, electric
- Pedals: R-Design sports pedals
- Radio: Sensus Connect infotainment system with high-performance sound
- Radio accessories: subwoofer
- Rain sensor
- Run-off Road Protection
- Wheel accessories: tire sealant
- Power steering, speed dependent
- Seat belts
- safety steering column (adaptive)
- Seats: Driver and passenger seat height adjustable (electrically)



- Seats: Lumbar support (4-way electrically adjustable) for driver and front passenger seat
- start/stop technology
- first aid kit and warning triangle
- Volvo On Call with WiFi hotspot
- Immobiliser
- Central locking with two radio remote controls and integrated emergency keys

#### Extra equipment

- trailer hitch (semi-electric)
- storage bag for the charging cable
- Finish: Crystal White Pearl Effect
- Package: IntelliSafe Package Pro (Pilot Assist: Adaptive cruise control system with distance warning and lane guidance assistant up to speeds of 130 km/h - IntelliSafe Surround with: Blind Spot Information System (BLIS) - Blind spot assistant and lane change warning including steering intervention Cross Traffic Alert (CTA) - Cross traffic warning with braking intervention - Warning including braking to a standstill Rear impact mitigation - Preventive protection in the event of an impending rear collision)
- Package: Xenium Package Pro (Panorama glass sunroof with lifting function with integrated, continuously adjustable sun protection (electric) - Head-up display Graphic display of driving information in the windshield - Parking camera with 360° surround view - Parking aid front and rear - Sensus Connect infotainment system with HIGH PERFORMANCE SOUND PRO by Harman/Kardon - Advanced air quality system with fine dust filtering according to air quality standard PM2.5)
- Wheels: Light alloy wheels 19" 5-triple spokes Sport-Design diamond cut/graphite look (8 J x 19 with tires 235/40 R 19 W)
- Side and rear windows darkened (from B-pillar)
- Glazing: Acoustic glazing for the side windows (UV and burglar-resistant laminated glass panes)

- Seats: Rear seats in 40/60 ratio or completely foldable with through-loading function
- tank filler neck with misfuelling protection
- lashing eyes in the luggage compartment (foldable)
- Preparation for Trailer Stability Control (TSA)
- WHIPS whiplash protection system

- Leather-look dashboard with contrasting stitching
- Head-Up Display (graphic display of driving information in the windshield)
- Package: Light package (headlight cleaning system - full LED headlights "Thor's Hammer" Active High Beam with extended high beam, dynamic cornering light, intelligent high beam assistant with adaptive headlight range control and integrated LED daytime running lights)
- Package: Seat comfort package (electrically adjustable passenger seat - memory function for passenger seat)
- Package: Winter Package Pro (parking heater with timer (fuel-powered) remote activation via Volvo On Call app possible - rear seat heating (outer seats of the 2nd row))
- Park Assist Pilot including front/rear parking aid (parking assistant for parking spaces lengthways and across the direction of travel (left and right) as well as reversing from parallel parking spaces. The steering is controlled by the assistant, starting and braking are controlled by the driver. The parking space must be at least 1.2 times the length of the vehicle.)
- Radio: Sensus Connect infotainment system with High Performance Sound Pro by Harman/Kardon (9" touchscreen - 600 W - 14 speakers - Fresh Air subwoofer - 2x USB port (compatible with iPod/iPhone/iPad) - Dirac Unison sound optimization - Bluetooth hands-free incl. audio streaming - Internet access incl. Internet radio and apps (via paired smartphone) - voice control - digital vehicle operating system - Connected Service Booking)

#### Brief expert findings

Documents submitted	At the time of the inspection, the registration certificate part 2 (letter) was available, but the registration certificate part 1 (certificate) was not available. (Copy)
VIN comparison	The vehicle identification number (VIN) was read and its conformity with the documents submitted was verified during the inspection by the undersigned.
Inspection	The inspection conditions were sufficient to assess the vehicle. The inspection was carried out using the lighting conditions provided by the photo system included in the report. Lifting equipment and a pit were available to examine the vehicle.
Test drive	No test drive/maneuvering was carried out during the inspection of the vehicle.
Engine function test	An engine test run was performed.

#### Value reducing factors



No.	Component group	Description
1	Rear bumper	Reflector - right side - Broken / torn - Replace
2	Wheel / tyres	Pressure sensor - on - Perform diagnosis
3	Interior	Interior - Soiled - Conditioning
4	Mudguard - left side	Mudguard - left side (Vogelkot eingebrannt) - Paint defect - Paint
5	2nd wheel set	2 alloy rims - Scratched - Loss in value
6	Tail light	Tail lamp - right side - Broken / torn - Replace
7	Front bumper	Front bumper - Scratched - Paint
8	Bonnet	Bonnet (Vogelkot eingebrannt) - Paint defect - Paint
9	2nd wheel set	1 alloy rim (Materialabtrag) - Scratched - Replace

## Wear and tear

No.	Component group	Description
1	Wheel / tyres	Alloy rim - rear right side - Scratched - No deduction
2	Wheel / tyres	Alloy rim - front right side - Scratched - No deduction
3	Wheel / tyres	Alloy rim - front left side - Scratched - No deduction
4	Wheel / tyres	Alloy rim - rear left side - Scratched - No deduction
5	Wheel / tyres	Tyres - complete set - Does not meet the leasing specifications - No deduction

The vehicle shows signs of wear consistent with its age and use.

## Accident damages

### No. Accident

- 1 Rear, Side right

## order/scope of the order

The order was placed to prepare a sales report on the vehicle described. This includes the following:

- Description of core relevant information about the vehicle
- Documentation of equipment features  
(*delivery by third-party service providers*)
- Documentation of damage, defects, missing parts
- Documentation of previous damage, unrepaired previous damage, repainting
- a brief visual or functional inspection of the equipment details if possible.  
(*Functional tests of driver assistance systems are not included in the scope of services!*)
- a photo documentation of the vehicle



## Basis for the order

The basis of this product is the guideline for vehicle returns and assessments of Alphabet Fuhrpark GmbH. The expert makes the explicit findings in individual cases objectively within the framework of the specified standards based on his own expertise.

The vehicle inspection takes place in a non-disassembled condition.

Damage or defects that can only be identified during disassembly/diagnosis work or through advanced knowledge remain within the scope of the prognosis risk. An increased risk exists due to concealed defects that were caused by fraudulent deception and were not identifiable by the expert.

Damage or defects resulting from normal use or wear and tear of the vehicle will be accepted according to the applicable standard.

There was no explicit identification or monetary consideration of the expected features within the product.

Features which in their nature and severity slightly exceed normal use but do not constitute unacceptable damage will be documented and identified under signs of use if necessary.

Damage or defects which, according to the underlying standard, can no longer be attributed to normal use or wear and tear, are listed in the product under value-reducing factors.

Depending on the product specification, a monetary ID can be provided. If this takes place, the costs can be 100% d or pro rata depending on the vehicle's age and mileage.

## Previous damages

Non-repaired previous damages were found at the vehicle. The necessary repair costs are listed in the expert report or if necessary, are listed in detail in a separately enclosed repair cost calculation.

## Comments

- Winterradsatz ist kein Bestandteil des Auslieferungsumfangs
- Die beigefügte Reparaturkostenkalkulation wurde nach bestem Wissen und Gewissen unter eingeschränkten Besichtigungsbedingung im demontagefreien Zustand erstellt. Es können aufgrund verdeckter Beschädigung erhebliche Mehrkosten und somit Abweichung der für den Unfall ausgewiesenen Reparaturkosten nicht ausgeschlossen werden
- Minderwerte höher als HEK





Figure 1: Diagonal front (left)



Figure 2: Diagonal front (right)



Figure 3: Diagonal rear (left)



Figure 4: Diagonal rear (right)



Figure 5: Interior - front



Figure 6: Interior - rear





Figure 7: Instrument cluster



Figure 8: Instrument panel



Figure 9: Interior 360° view ([Online Link](#))



Figure 10: Cargo area

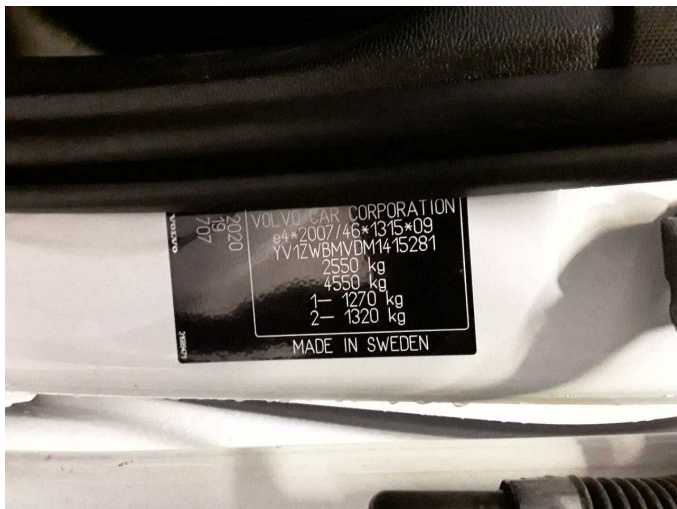


Figure 11: VIN



Figure 12: Mounted tyres



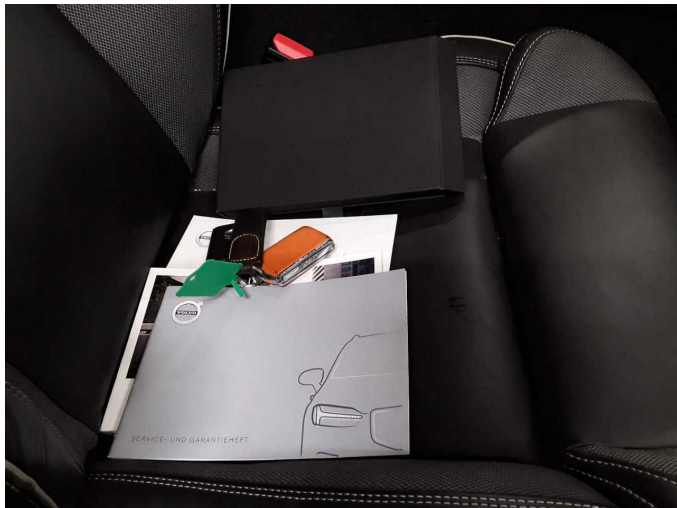


Figure 13: Documents

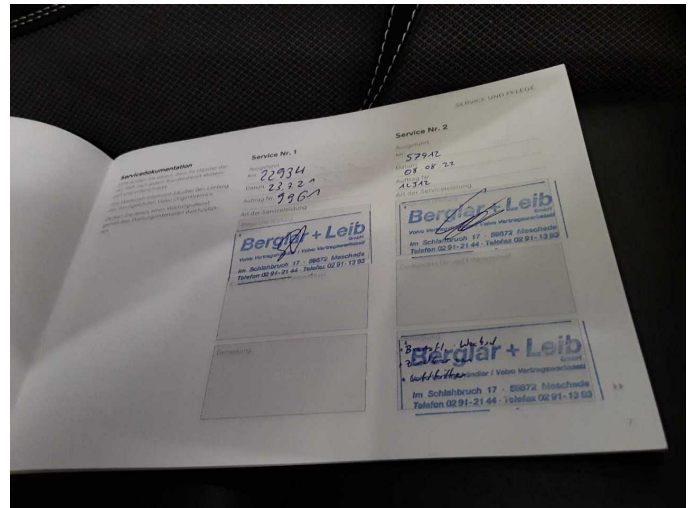


Figure 14: Documents

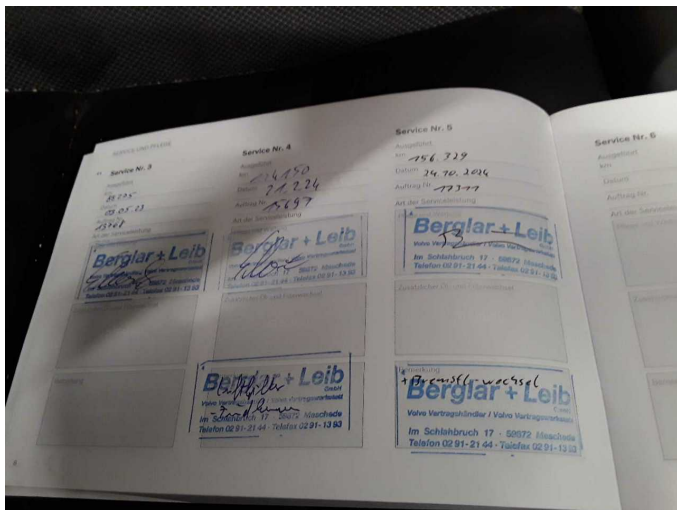


Figure 15: Documents

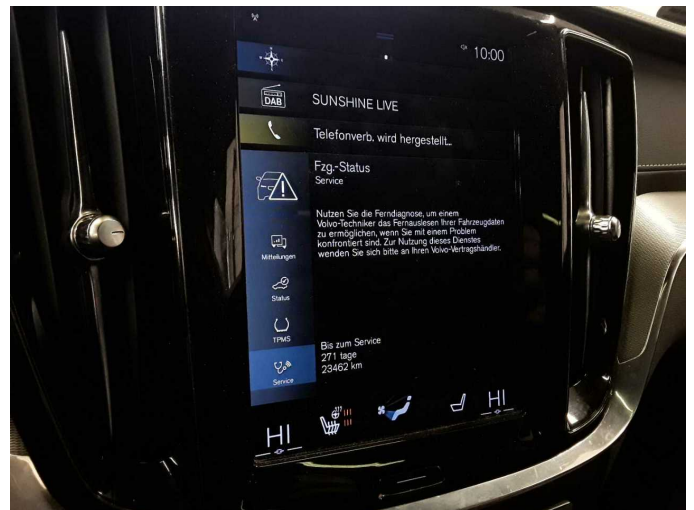


Figure 16: Documents



Figure 17: Additional tyres

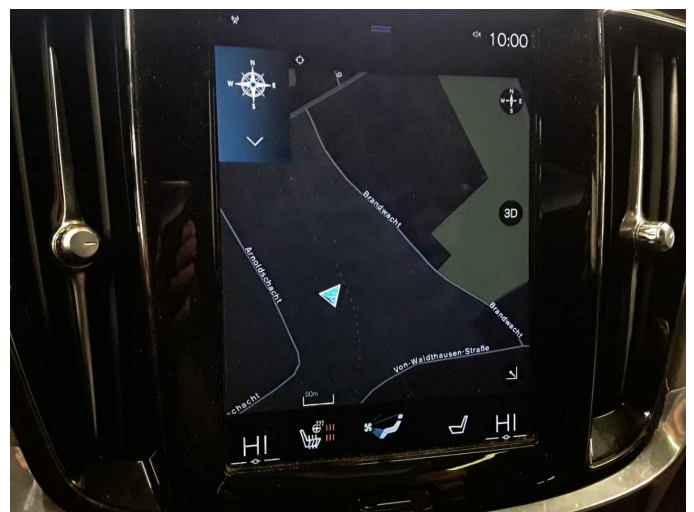


Figure 18: Navigation



Figure 19: Misc.



Figure 20: Misc.



Figure 21: Misc.



Figure 22: Misc.

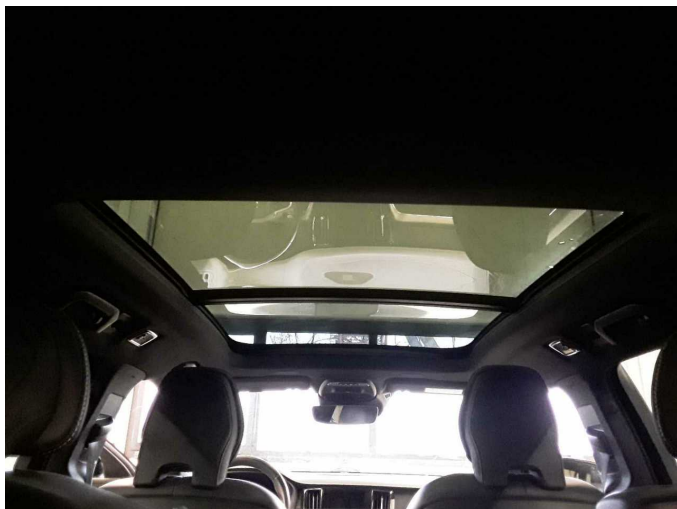


Figure 23: Misc.

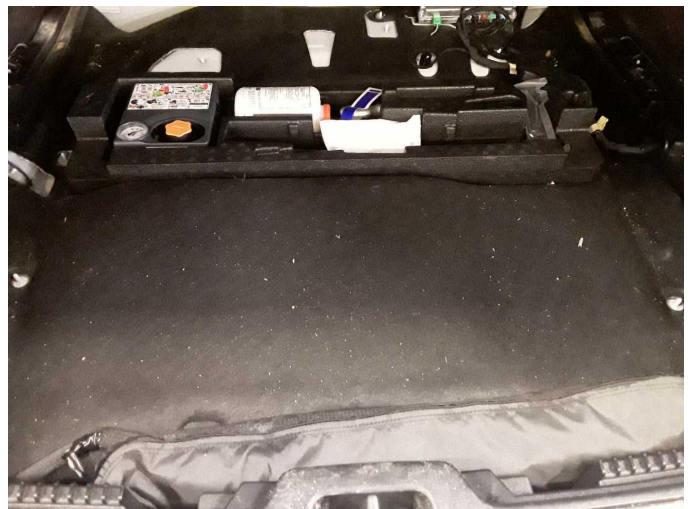


Figure 24: Misc.





Figure 25: Misc.



Figure 26: Misc.

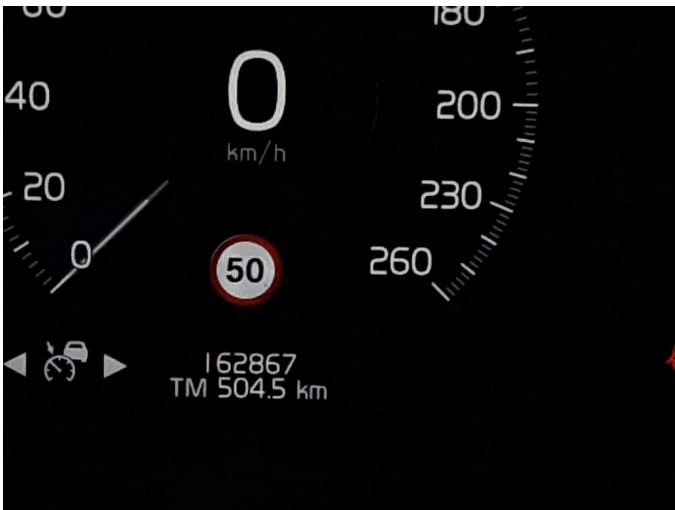


Figure 27: Misc.

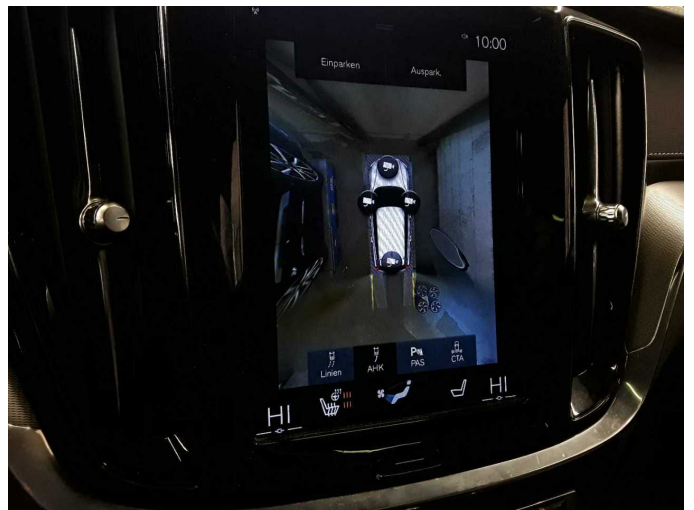


Figure 28: Misc.



Figure 29: Misc.



Figure 30: Misc.



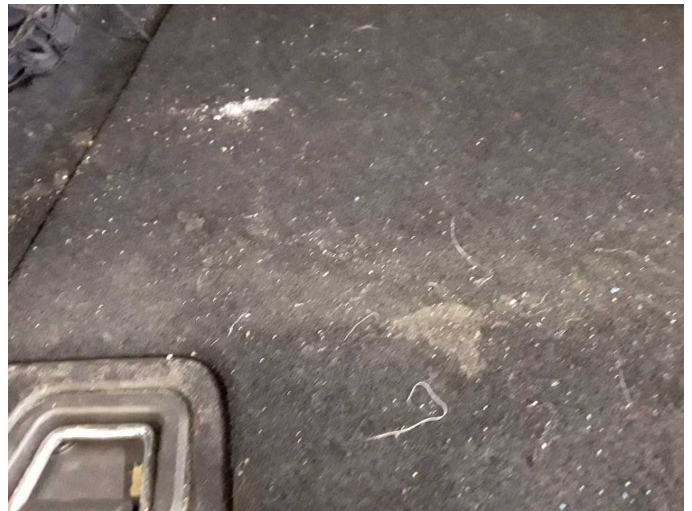
**Figure 31:** Misc.



**Damage 2:** Wheel / tyres: Pressure sensor - on - Perform diagnosis



**Damage 3:** Interior: Interior - Soiled - Conditioning



**Damage 3:** Interior: Interior - Soiled - Conditioning



**Damage 3:** Interior: Interior - Soiled - Conditioning



**Damage 3:** Interior: Interior - Soiled - Conditioning





**Damage 3:** Interior: Interior - Soiled - Conditioning



**Damage 3:** Interior: Interior - Soiled - Conditioning



**Damage 4:** Mudguard - left side: Mudguard - left side (Vogelkot eingebrannt) - Paint defect - Paint



**Damage 4:** Mudguard - left side: Mudguard - left side (Vogelkot eingebrannt) - Paint defect - Paint



**Damage 4:** Mudguard - left side: Mudguard - left side (Vogelkot eingebrannt) - Paint defect - Paint



**Damage 4:** Mudguard - left side: Mudguard - left side (Vogelkot eingebrannt) - Paint defect - Paint





**Damage 5:** 2nd wheel set: 2 alloy rims - Scratched - Loss in value



**Damage 5:** 2nd wheel set: 2 alloy rims - Scratched - Loss in value



**Damage 5:** 2nd wheel set: 2 alloy rims - Scratched - Loss in value



**Damage 5:** 2nd wheel set: 2 alloy rims - Scratched - Loss in value



**Damage 6:** Tail light: Tail lamp - right side - Broken / torn - Replace



**Damage 6:** Tail light: Tail lamp - right side - Broken / torn - Replace



**Damage 7:** Front bumper: Front bumper - Scratched - Paint



**Damage 7:** Front bumper: Front bumper - Scratched - Paint



**Damage 7:** Front bumper: Front bumper - Scratched - Paint



**Damage 8:** Bonnet: Bonnet (Vogelkot eingebrannt) - Paint defect - Paint



**Damage 8:** Bonnet: Bonnet (Vogelkot eingebrannt) - Paint defect - Paint



**Damage 8:** Bonnet: Bonnet (Vogelkot eingebrannt) - Paint defect - Paint





**Damage 9:** 2nd wheel set: 1 alloy rim (Materialabtrag) - Scratched - Replace



**Damage 9:** 2nd wheel set: 1 alloy rim (Materialabtrag) - Scratched - Replace



**Accident 1:** Rear, Side right



**Accident 1:** Rear, Side right



**Accident 1:** Rear, Side right



**Accident 1:** Rear, Side right





**Accident 1: Rear, Side right**



**Accident 1: Rear, Side right**



**Accident 1: Rear, Side right**



**Accident 1: Rear, Side right**



**Accident 1: Rear, Side right**



**Accident 1: Rear, Side right**



**Accident 1: Rear, Side right**



**Accident 1: Rear, Side right**