



Expertise

Protocol number: 41692771  
Order No. / Reference: 25270609  
Inspection date: 24 Sept 2025

Manufacturer: Volvo	Model: V60 T6 AWD Recharge Geartronic Inscription
VIN: YV1ZWBFVDM1417552	



Vehicle details	
Manufacturer / Type / Model / Equipment	
Volvo V60 T6 AWD Recharge Geartronic Inscription	
Vehicle Identification number	YV1ZWBFVDM1417552
Mileage (Read)	104,702 km
First registration	19 Oct 2020
Number of holders	1
Next periodical technical inspection	01/2026
(Report not on hand)	
Power / Engine displacement	186 kw / 1,969 ccm
Fuel type / Cylinder	Hybr.B/E ext. edition / 4
Gearbox / Number of gears	Automatic / 8
Type of drive	All-wheel drive
Type of vehicle	Station wagon
Colour / colour code	Bright Silber-Metallic
Doors / Seats	5 / 5
Upholstery type	Leather
Colour of upholstery	Anthracite-Black
Re/Import	no
Vehicle with smoke odor	no
Driving readiness	Roadworthy



## Vehicle details

<b>Maintenance booklet / proof</b>	digital proof / complete	<b>Next maintenance in</b>	121 Tag(e)
<b>Last maintenance on / at</b>	01/2025 at 91,155 km		
<b>Key is / should be</b>	2 / 2	<b>FZG documents</b>	ZB#2 (B) was available (copy), ZB#1 (S) was not available
		<b>Letter No.</b>	FU853221
<b>Previous damage / Accident</b>	Detectable	<b>Repainting</b>	None detectable
<b>Inspection conditions</b>	sufficient	<b>Lifting equipment / pit</b>	yes
<b>Test drive</b>	short drive on the company premises	<b>Engine function test</b>	Performed
<b>Driving readiness</b>	Roadworthy		
<b>Manufacturer key number/ type code number</b>	9101 / BOH 00012		
<b>Emission standard</b>	EURO6;WLTP;AP;PI/CI; M, N1 I	<b>Fine dust sticker</b>	
<b>Permitted total weight</b>	2,550 kg	<b>Empty weight</b>	
<b>Dimensions</b>	4761 x 1850 x 1421		

## Tyres

### Mounted tyres

#	Tyre size	Type of tyre	Manufacturer	Tread depth
1)	235/45 R18 98Y	Summer tyres on Light alloy	Goodyear	4mm / 4mm
2)	235/45 R18 98Y	Summer tyres on Light alloy	Goodyear	4mm / 4mm

### Additional tyres

#	Tyre size	Type of tyre	Manufacturer	Tread depth
1)	235/45 R18 98V	Winter tyres on Light alloy	Pirelli	5mm / 5mm
2)	235/45 R18 98V	Winter tyres on Light alloy	Pirelli	5mm / 5mm

### Replacement

Typ	Tyre size	Type of tyre	Manufacturer	Tread depth
	Tirefit	Expiration date 06/2024		

**Legend:** Tread depth information for tyres on the left is in the first place, for tyres on the right is in the second place on the axle in the direction of travel

## Equipment

### Standard equipment

- ABS - Anti-lock braking system (with EBD)
- Driver and front passenger airbags with two-stage deployment system (side airbags for driver and front passenger and curtain/shoulder airbags (IC) for all occupants)
- Exhaust system with two chrome-plated tailpipes (integrated in trapezoidal shape in the rear apron)
- Electrically foldable exterior mirrors
- Electrically adjustable and heated exterior mirrors (driver and passenger side with wide-angle optics)
- Hill Start Assist (HSA)
- Indicators (LED) integrated in exterior mirrors
- On-board computer with vehicle control functions
- Chrome applications (at the rear, in the front bumper)
- City Safety (automatic emergency braking system with detection of vehicles, cyclists, pedestrians, and large animals, including intersection braking assistant, emergency braking assistant for oncoming traffic, and steering assistance for evasive maneuvers)
- roof edge spoiler
- Aluminum roof rails (integrated)
- Drive Mode (driving mode settings for engine, transmission, steering, brakes and chassis: Hybrid, Pure, AWD, Power, Individual)
- Driver Alert (Attention Warning - Lane Keeping Aid (LKA) - Active Lane Departure Warning - Road Sign Information (RSI) - Traffic Sign Recognition Preventive Protection System: - Road Edge Detection (against unintentional lane departure through steering and braking interventions) - Oncoming Lane Mitigation (when crossing the center line, approaching oncoming traffic including active steering intervention) - Run-off Road Protection (when unintentionally leaving the road including pre-activation of the seat belt tensioners, emergency call via Volvo On Call and door unlocking))
- Luggage compartment partition net
- Transmission: 8-speed Geartronic (automatic transmission)
- Rear window wiper
- Interior and exterior mirrors with automatic dimming
- Interior lighting (headlining, front reading lights, front ambient lighting, front footwell, storage compartment behind center console, glove compartment and luggage compartment)
- Child safety lock (manual, rear doors)
- Automatic climate control (with separate temperature control for driver and front passenger and additional ventilation nozzles for the rear seats (integrated in the B-pillar) including pre-ventilation and reheating of the interior when the engine is switched off via the Volvo On Call smartphone app or menu)
- Stainless steel loading sill protection in the luggage compartment
- Steering wheel adjustable for height and length
- Steering wheel: 3-spoke leather steering wheel, anthracite
- Front passenger airbag can be switched off
- All-wheel drive (AWD) with Instant Traction (via electronically controlled multi-plate clutch (5th generation))
- Ambient lighting (Extended interior lighting with: - Ambient lighting (multi-colored) front and rear - Exit lights front and rear - Illuminated door pockets and door openers front and rear - Illuminated cup holders front - Footwell lighting rear - Reading lights rear - Work light on the luggage compartment lid)
- Outside temperature display
- Condensation sensor (for automatic activation of the defroster function)
- Brake light, third
- Chrome applications on the side windows
- CleanZone air quality system (with activated carbon filter, automatic air recirculation and pre-ventilation of the interior when the vehicle is unlocked)
- Color glazing
- Connected Safety (cloud-based warning of slippery road conditions and vehicles with hazard lights activated)
- Digital instrumentation 12.3" full-graphic display (31.2 cm diagonal, high-resolution) (with two variable circular instruments and information display (e.g. for navigation map view))
- Insoles: Drift Wood
- Parking aid, rear
- Aluminum door sills with Recharge lettering at the front
- Electronic differential lock Corner Traction Control (CTC)
- ESC - driving dynamics control
- Electric windows front and rear (with auto-down and auto-up function)
- Automatic emergency braking (emergency braking mechanism after the airbags or belt tensioners are deployed to prevent secondary accidents)
- Waterfall-design front grille in chrome
- Cruise control system with variable speed limit
- Automatic tailgate (electric)
- Rear window, heated
- IDIS (Intelligent Driver Information System) (delays incoming calls or vehicle information in dangerous situations)
- ISOFIX mounts for the outer rear seats
- Keyless Drive (electronic access system) (with sensor-controlled tailgate, waterproof micro key and illuminated door handles and floor lights)
- Headrests (5)
- Rear headrests foldable, electrically
- Loading box under the load compartment floor



- Make-up mirrors for driver and passenger, illuminated
- Rear center armrest (folding) with cup holder
- Sensus navigation system (3D navigation - destination input via natural voice control - dynamic route guidance with real-time traffic information - Local Search (local keyword search with information, reviews, and photos) - Volvo Lifetime MapCare (free map updates))
- Parking brake, electric
- Particle filter: gasoline particulate filter
- Upholstery: Leather comfort seats (including storage compartment in the rear center armrest)
- Radio accessories: Apple CarPlay and Android Auto (Integration of Apple iPhone and Android smartphones into the Sensus operating system.)
- Radio accessories: Digital radio reception (DAB+) (In addition to the analogue station selection. Please note: Digital reception depends on local network availability)
- Radio accessories: subwoofer
- Rain sensor
- Run-off Road Protection (preventive protection system in the event of unintentional road departure or imminent rollover, including pre-activation of the seat belt tensioners, battery deactivation (plug-in hybrid only), emergency call via Volvo On Call, and door unlocking)
- Wheel accessories: Tire sealant (incl. 12-volt compressor - top speed 80 km/h)
- Safety braking system with disc brakes all around (internally ventilated) (automatic brake system preload, brake assist and automatic hold function)
- Safety steering column (adaptive)
- Seats: Adjustable leg rest for driver and passenger seat
- Seats: Driver and passenger seats height adjustable (electric) (including manual tilt adjustment for the driver seat)
- Seats: Lumbar support (4-way electrically adjustable) for driver and front passenger seat
- Start/Stop technology
- Power socket (12-volt connection at the front)
- Tank filler neck with misfuelling protection
- Lashing eyes in the luggage compartment (foldable)
- Preparation for Trailer Stability Control (TSA)
- Immobiliser
- WHIPS whiplash protection system (including dive-through protection on all seats and energy-absorbing seat padding in the front)
- Central locking with two remote controls and integrated emergency keys (including automatic locking of the doors while driving (can be deactivated) - panic function (integrated in the remote control) - convenient opening/closing of the side windows and, if applicable, the sunroof via remote control)

#### Extra equipment

- Trailer hitch (semi-electric)

- Schuko/Type 2 (Mode 2) charging cable, 7 m long, single-phase, 10 A (for connection to a standard 230-volt household socket)
- Load compartment blind
- LED headlights "Thor's Hammer" (with high beam assistant and integrated LED daytime running lights)
- Steering wheel: Multifunction buttons on the steering wheel in high-gloss black
- Front center armrest with integrated storage compartment and cup holders
- Emergency brake lights (brake lights flash quickly during heavy deceleration; hazard warning lights automatically activate at speeds below 10 km/h)
- Package: Winter package (heated front seats - heated wiper blades and windshield washer nozzles (front) - heated steering wheel)
- Radio: Sensus Connect infotainment system with High Performance Sound (9" touchscreen (22.9 cm diagonal) - 170 watts of power - 10 speakers - 2x USB ports (compatible with Apple iPod/iPhone/iPad) - Bluetooth hands-free system including audio streaming - Internet access including internet radio and apps (via paired smartphone) - Voice control - Digital vehicle manual - Connected Service Booking)
- Radio accessories: Two USB-C interfaces on the back of the tunnel console
- Wheels: 18" 10-multi-spoke light alloy wheels with diamond cut/graphite look (8 J x 18 with 235/45 R 18 W tires)
- Wheels: Tire pressure monitoring system (passive) (with tire-specific pressure loss notification)
- Gear lever made of Swedish crystal glass by Orrefors
- Power steering, speed-dependent
- Seat belts (active seat belts with belt tensioners, pre-activation of the belt tensioners in dangerous situations and belt force limiters - belt height adjustment at the front - warning tone/display when seat belts are not fastened (for all seats))
- Seats: Driver's seat electrically adjustable (with memory function for driver's seat and exterior mirror settings (stored in radio remote control))
- Seats: Rear seats in 40/60 split or fully foldable with through-loading function
- Power socket (12 volt connection in the luggage compartment)
- First aid kit and warning triangle
- Volvo On Call with Wi-Fi hotspot (including integrated modem, external antenna, and Wi-Fi hotspot for mobile devices). Volvo On Call includes: automatic emergency call function with transmission of vehicle position and data, as well as alerting the Volvo On Call Service Center at the touch of a button (10-year usage period). Additionally, various convenience services are available via the smartphone app (3-year usage period and extendable upon request; including extensions of the emergency call function).

- Parking assistance front and rear



- Windscreen, heater
- Paintwork: metallic paint
- Package: Lighting package (headlight cleaning system - full-LED headlights "Thor's Hammer" Active High Beam with extended high beam, dynamic cornering light, intelligent high beam assistant with adaptive headlight range control and integrated LED daytime running lights)
- Package: Winter Package Pro (Parking heater with timer (fuel-powered) remote activation via Volvo On Call app possible - Rear seat heating (outer seats of the 2nd row))
- Package: Xenium package (front and rear parking sensors - rear view camera - Sensus Connect infotainment system with HIGH PERFORMANCE SOUND PRO by Harman/Kardon)
- Glazing: Acoustic glazing for the side windows (UV and burglar-resistant laminated glass panes)
- Child safety lock for the rear doors, electric
- Package: IntelliSafe Pro Package (Pilot Assist: Adaptive Cruise Control with Distance Warning and Lane Keeping Assist up to speeds of 130 km/h - IntelliSafe Surround with: Blind Spot Information System (BLIS) - Blind Spot Assist and Lane Change Warning including steering intervention Cross Traffic Alert (CTA) - Cross Traffic Alert with braking intervention - Warning including braking to a standstill Rear Impact Mitigation - Preventive protection in the event of an impending rear-end collision)
- Parking camera with 360° surround view
- Side and rear windows tinted (from B-pillar)
- Seats: Passenger seat electrically adjustable
- Seats: Memory function for passenger seat

### Brief expert findings

Documents submitted	At the time of the inspection, the registration certificate Part 2 (letter) was available, but the registration certificate Part 1 (certificate) was not. (Copy)
VIN comparison	The vehicle identification number (VIN) was read from the vehicle and its conformity with the submitted documents was verified during the inspection by the undersigned.
Inspection	The inspection conditions were sufficient for the assessment of the vehicle. Lifting equipment and a pit were available for examining the vehicle.
Test drive	A short movement and shunting trip was carried out on the company premises.
Engine function test	An engine test run was performed.
Driving readiness	The vehicle was drivable at the time of inspection.

### Value reducing factors

No.	Component group	Description
1	Equipment	Tirefit filler - Due - Replace
2	Side panel - rear right side	Side panel - dent(s) - Smooth repair work
3	Side panel - rear right side	Sill - Scratch(es) - Smart repair
4	Rear bumper	Spoiler - Scratch(es) - Smart repair
5	Rear bumper	Rear bumper - Scratch(es) - Paint
6	Boot lid / rear door	Boot lid - Scratch(es) - Paint
7	Front bumper	Front bumper - Scratched - Paint
8	Wheel / tyres	Alloy rim - rear right side - Scratched - Replace
9	Wheel / tyres	Alloy rim - front right side - Scratched - Replace



## Wear and tear

No.	Component group	Description
1	2nd wheel set	2nd wheel set (Kein teil der Ausstattung) - Scratched - No deduction
2	2nd wheel set	2 tyres (Kein teilderAusstattung) - Damaged - No deduction
3	Sill - right side	Sill - dent(s) - No deduction
4	Door - front right side	Door - Scratch(es) - No deduction
5	Side panel - rear left side	Side panel - dent(s) - No deduction
6	Bonnet	Bonnet - Stone chips - No deduction

The vehicle shows signs of wear commensurate with its age and use.

## Accident damages

### No. Accident

1 Roof, Rear

## Order/Scope of order

The order was placed to prepare a sales report for the vehicle described. This includes the following:

- Description of core relevant information about the vehicle
- Documentation of equipment features  
(*Delivery by third-party service providers*)
- Documentation of damage, defects, missing parts
- Documentation of previous damage, unrepaired previous damage, repainting
- a brief visual or functional inspection of the equipment details if possible.  
(*Functional tests of driver assistance systems are not included in the scope of services!*)
- a photo documentation of the vehicle

## Basis for the order

This product is based on the Alphabet Fuhrpark GmbH guidelines for vehicle returns and valuations. The expert makes the explicit findings in each individual case objectively within the framework of the specified standards based on his or her own expertise.

The vehicle inspection takes place in a disassembled state.

Damage or defects that can only be detected during disassembly/diagnosis work or through advanced knowledge remain within the scope of the prognosis risk. An extended risk exists for concealed defects caused by fraudulent deception and not identifiable by the expert.

Damage or defects resulting from normal use or wear and tear of the vehicle will be accepted according to the applicable standard.

There was no explicit identification or monetary consideration of the expected features within the product.

Features which in their nature and severity slightly exceed normal use but do not constitute unacceptable damage will be documented and identified under signs of use if necessary.

Damage or defects which, according to the underlying standard, can no longer be attributed to normal use or wear and tear are listed in the product under "Depreciating Factors".

Depending on the product specification, a monetary ID can be provided. If this takes place, the costs can be 100% d or pro rata depending on the vehicle's age and mileage.

## Previous damages

Non-repaired previous damages were found at the vehicle. The necessary repair costs are listed in the expert report or if necessary, are listed in detail in a separately enclosed repair cost calculation.



## Comments

- Winterradsatz ist kein Bestandteil des Auslieferungsumfangs.





Figure 1: Diagonal front (left)



Figure 2: Diagonal front (right)



Figure 3: Diagonal rear (left)



Figure 4: Diagonal rear (right)



Figure 5: Interior - front



Figure 6: Interior - rear





Figure 7: Instrument cluster



Figure 8: Instrument panel



Figure 9: Interior 360° view



Figure 10: Cargo area

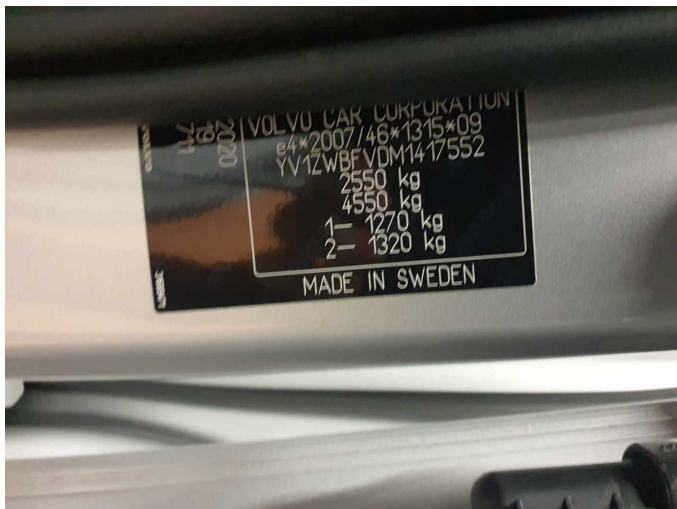


Figure 11: VIN



Figure 12: Mounted tyres



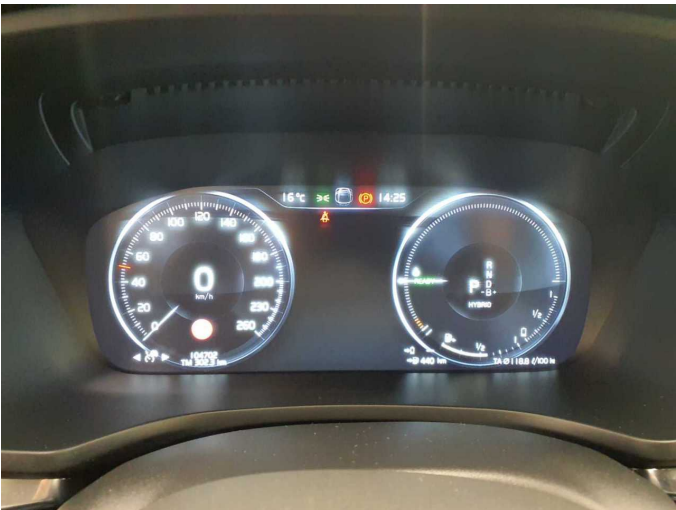


Figure 13: Documents



Figure 14: Documents

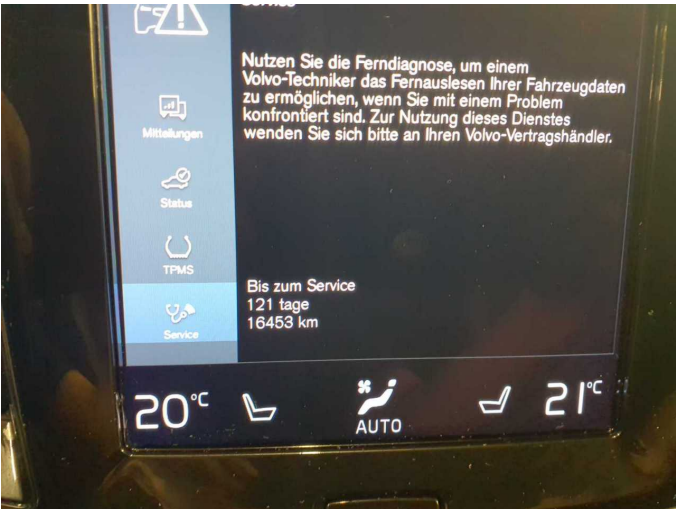


Figure 15: Documents

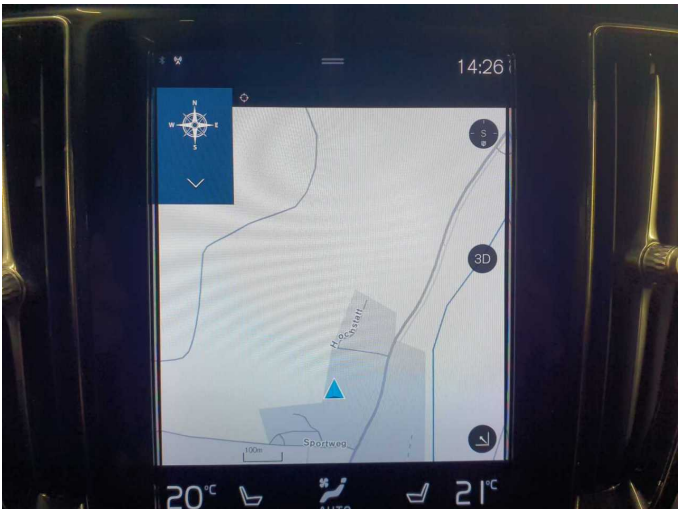


Figure 16: Navigation



Figure 17: Misc.



Figure 18: Misc.



Figure 19: Misc.



Figure 20: Misc.



Figure 21: Misc.



Figure 22: Misc.



Figure 23: Misc.



Figure 24: Misc.





Figure 25: Misc.



Figure 26: Misc.



Figure 27: Misc.



Figure 28: Misc.



Figure 29: Misc.

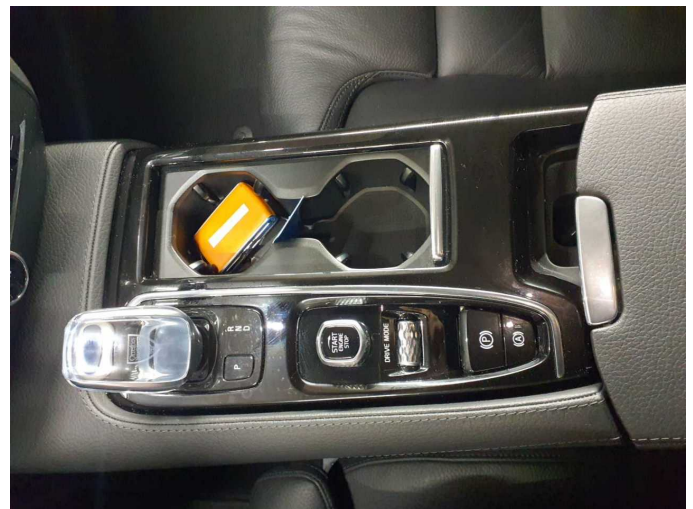


Figure 30: Misc.

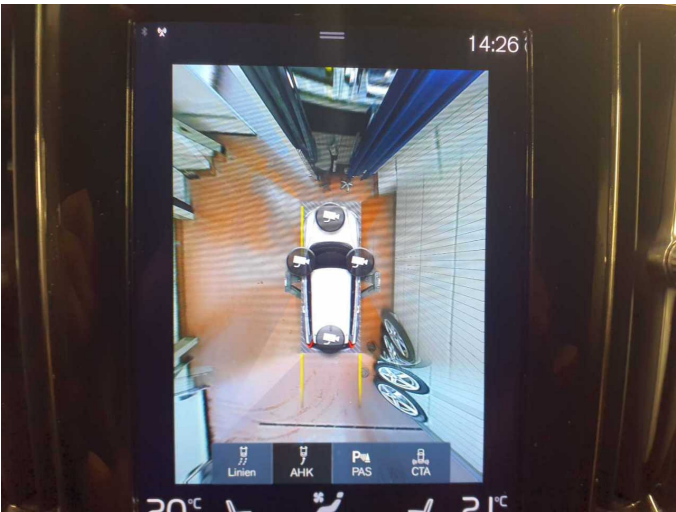


Figure 31: Misc.



Damage 1: Equipment: Tirefit filler - Due - Replace



Damage 2: Side panel - rear right side: Side panel - dent(s) - Smooth repair work



Damage 2: Side panel - rear right side: Side panel - dent(s) - Smooth repair work

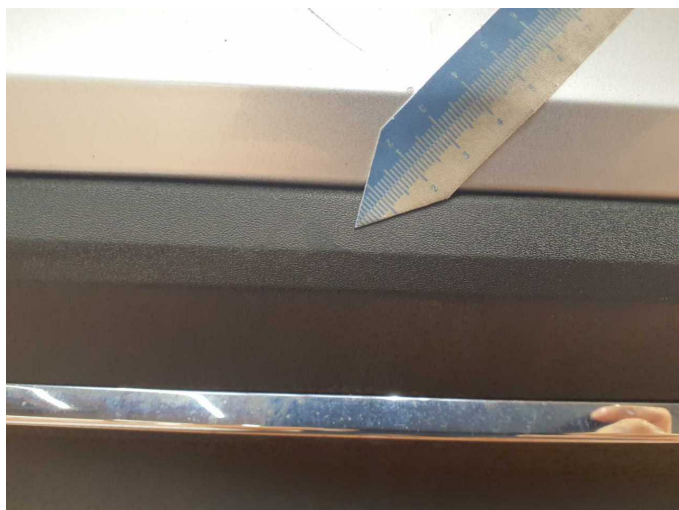


Damage 3: Side panel - rear right side: Sill - Scratch(es) - Smart repair



Damage 3: Side panel - rear right side: Sill - Scratch(es) - Smart repair





**Damage 4:** Rear bumper: Spoiler - Scratch(es) - Smart repair



**Damage 4:** Rear bumper: Spoiler - Scratch(es) - Smart repair



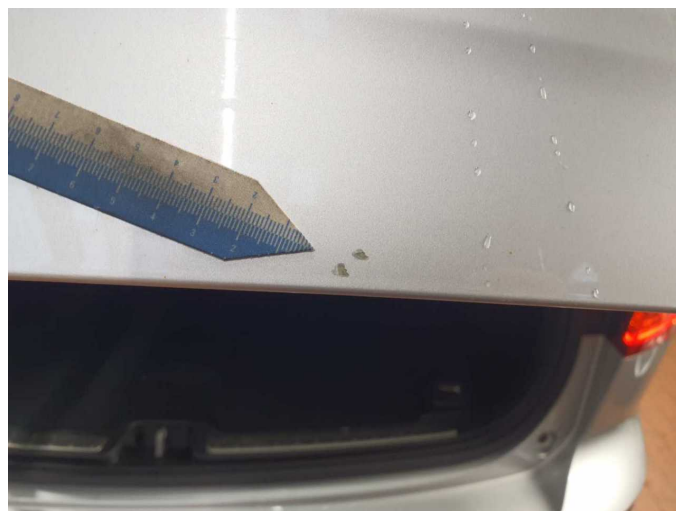
**Damage 5:** Rear bumper: Rear bumper - Scratch(es) - Paint



**Damage 5:** Rear bumper: Rear bumper - Scratch(es) - Paint



**Damage 5:** Rear bumper: Rear bumper - Scratch(es) - Paint



**Damage 6:** Boot lid / rear door: Boot lid - Scratch(es) - Paint



**Damage 6:** Boot lid / rear door: Boot lid - Scratch(es) - Paint



**Damage 6:** Boot lid / rear door: Boot lid - Scratch(es) - Paint



**Damage 7:** Front bumper: Front bumper - Scratched - Paint



**Damage 7:** Front bumper: Front bumper - Scratched - Paint



**Damage 8:** Wheel / tyres: Alloy rim - rear right side - Scratched - Replace



**Damage 8:** Wheel / tyres: Alloy rim - rear right side - Scratched - Replace





**Damage 8:** Wheel / tyres: Alloy rim - rear right side - Scratched - Replace



**Damage 9:** Wheel / tyres: Alloy rim - front right side - Scratched - Replace



**Damage 9:** Wheel / tyres: Alloy rim - front right side - Scratched - Replace



**Accident 1:** Roof, Rear



**Accident 1:** Roof, Rear



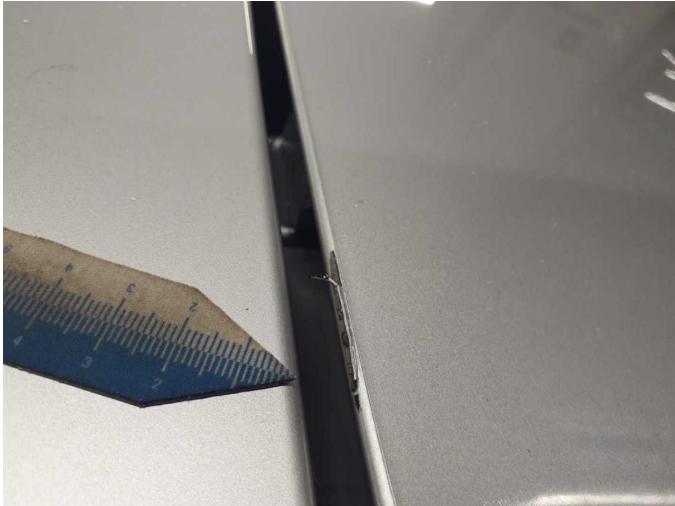
**Accident 1:** Roof, Rear



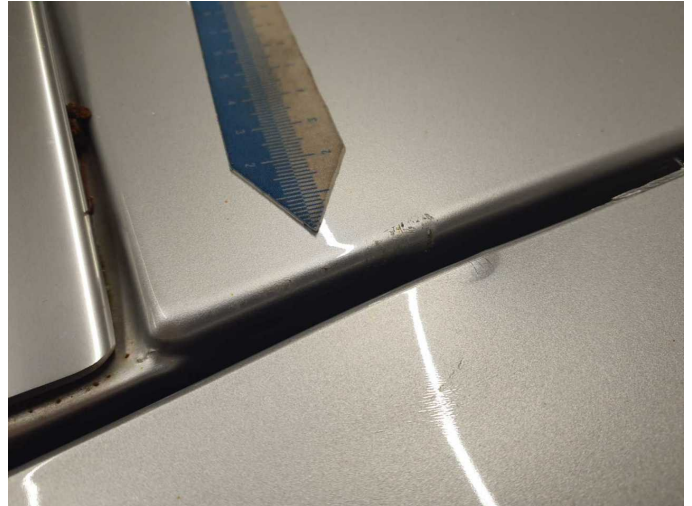
**Accident 1: Roof, Rear**



**Accident 1: Roof, Rear**



**Accident 1: Roof, Rear**



**Accident 1: Roof, Rear**



**Accident 1: Roof, Rear**



# Wartungshistorie

(gemäß Auftraggeber Informationen)

Fahrgestellnummer: YV1ZWBFVDM1417552

Hersteller / Modell: VOLVO VOLVO V60 T6 AWD Recharge Geartronic Inscription

Datum	KM-Stand	Beschreibung
28.01.2025	91.155	Motoröl b. Wartung; Ölfilter ern; Regelwartungsdienst; Wartung Sonstiges
11.01.2024	58.763	AU; Bremsflüssigkeit; Bremsflüssigkeit ern; Luftfiltereinsatz ern; Motoröl b. Wartung; Ölfilter ern; Regelwartungsdienst; Reparatur Sonstiges; Wartung Sonstiges; Zündkerzen ern
02.11.2022	37.617	Motoröl b. Wartung; Ölfilter ern; Regelwartungsdienst; Reparatur Sonstiges; Wartung Sonstiges
31.08.2021	15.937	Kleine Inspektion; Motoröl b. Wartung; Ölfilter ern; Wartung Sonstiges