



VOLVO V60

V60 D4 Geartronic

VIN NO YV1ZWA8TDK1020787
Registration Number TDK1020787



MOT Date	Number of Owners	Number of Keys	Odometer Reading
2027-06-01	2	2	166014 km
Last Service	Last Service Mileage	First Registration Date	Country First Registered
2025-04-03	146684	2019-05-07	Germany

Inspection Report Summary

Customer	BCA Online	Report Number	P20250929094601
Inspection Date / Place	2025-09-29 / ARS Altmann AG Wolnzach	Cosmetic Grade	5

Vehicle Summary

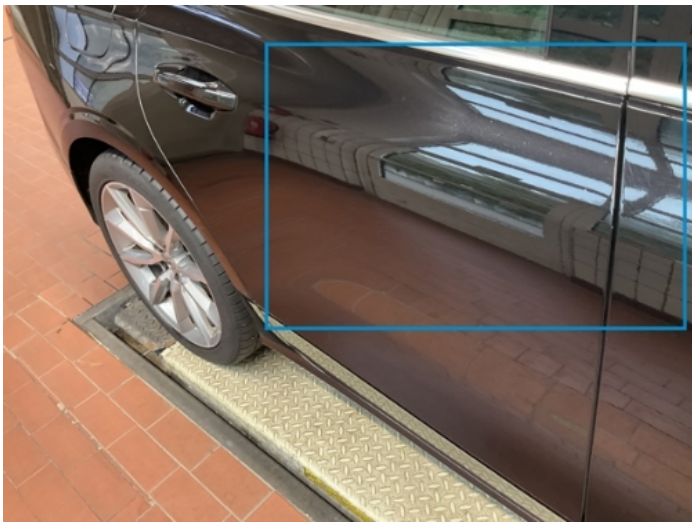
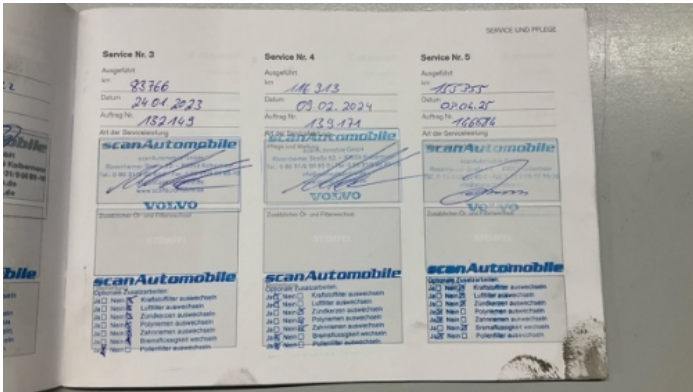
Vehicle Condition	Non-Runner	VAT Type	Margin
Fuel Type	Diesel	Road Worthy	Yes
Colour	Black	Engine Size (cc)	1969
Engine Size	2.0	No of Doors	5
Body Type	Stationwagon / Estate	Drive Train	Front
Seat Colour		No of Seats	5
Seat Covering Name		Seat Covering	Leather
Charging Cables		NEDC CO2 Rating (q/km)	119
Gearbox Type	Automatic		

Vehicle History & Documents

Service Book Available	Present	Next Service Mileage	km
Previous Usage		Imported	No
Manufacturer Warrenty			







Equipment

Airbag Status	Anti-lock braking	Cruise control	Digitaldashboard
Remote adjusting wing mirrors	Reversing Camera	Satellite navigation	Central locking
Electrictailgate	LED Headlamps	Rear parking sensors	Alloys wheels
Bluetooth telephone interface	Diesel particulate filter	Front parking sensors	Remote central locking
Roof rails	Stability control	Electrically folding wing mirrors	Leather steering wheel

Radio

Equipment Details

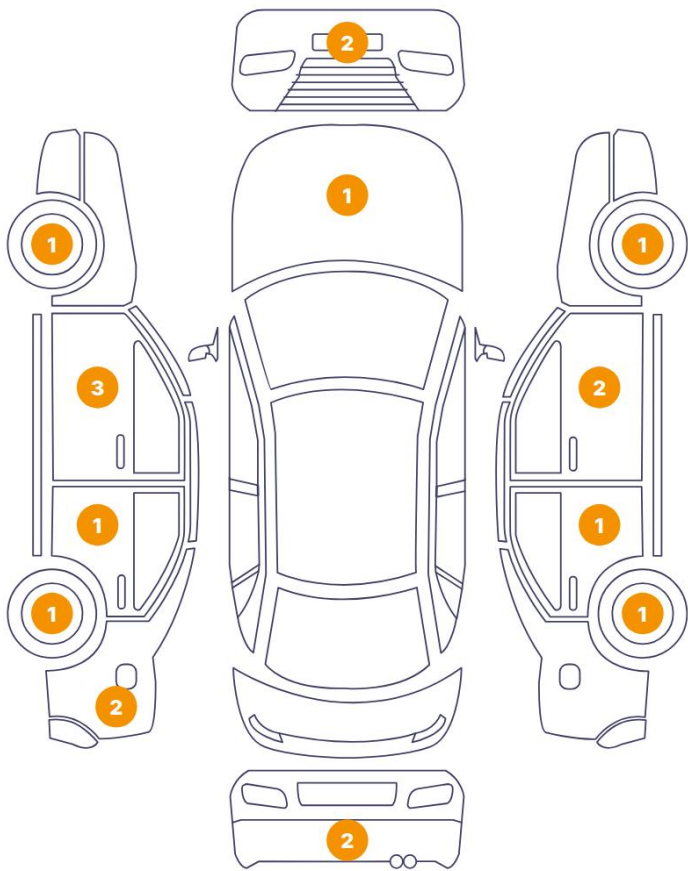
Air Conditioning	Dual Zone Climate Control	Alloy Wheel Size	19
Seat Heating	Front		

Wheels & Tyres

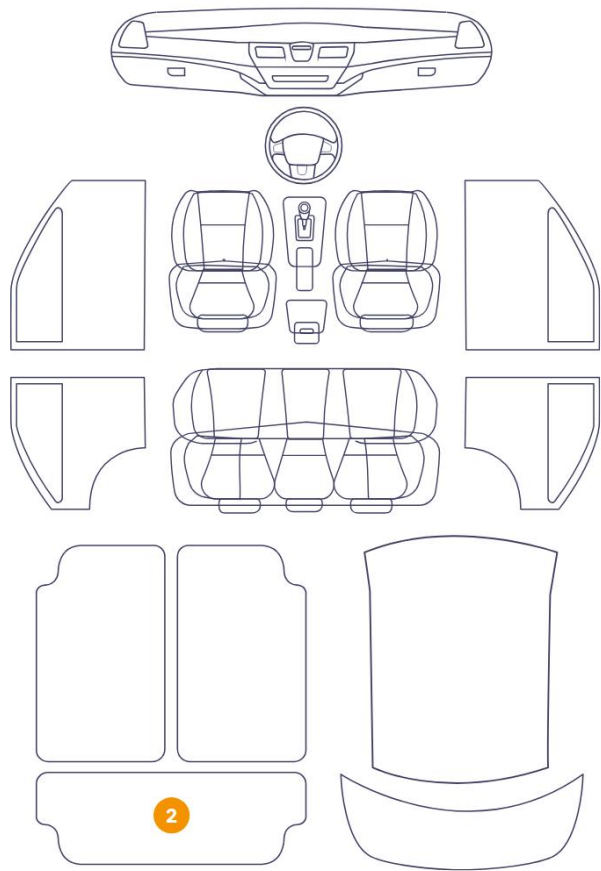
Right Front Tyre Depth	3	Left Front Tyre Depth	3
Right Rear Tyre Depth	3	Left Rear Tyre Depth	3

Cosmetic Damage

18 Schäden



2 Schäden

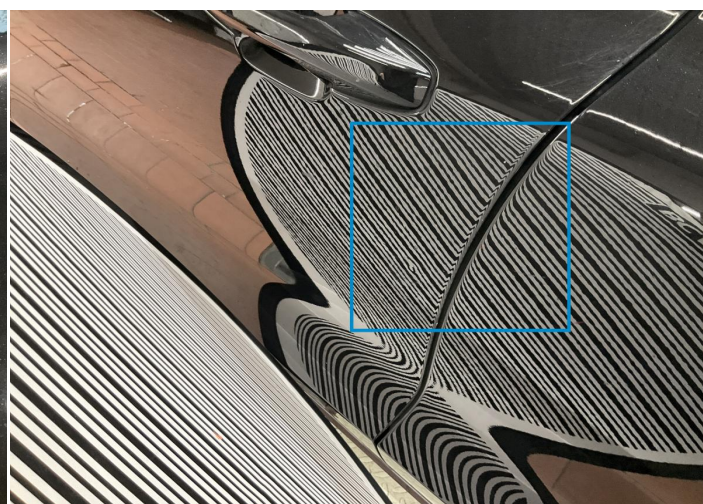


Component		Damage	Comments
1	Hood	Bodywork / Dent / Dent	
2	Door / Front Left	Bodywork / Dent / Dent	
3	Side Panel / Back Left	Bodywork / Dent / Dent	
4	Bumper / Front	Paint / Scratch / Scuff	
5	Rim / Front Left	Out of Bodywork / Scratch	
6	Mirror Shell / Front Left	Paint / Scratch / Scuff	
7	Door / Front Left	Paint / Scratch / Scuff	
8	Door / Back Left	Paint / Scratch / Scuff	
9	Rim / Back Left	Out of Bodywork / Scratch	
10	Side Panel / Back Left	Paint / Scratch / Scuff	
11	Bumper / Back	Bodywork / Breakage / Hole	
12	Bumper / Back	Paint / Scratch / Scuff	

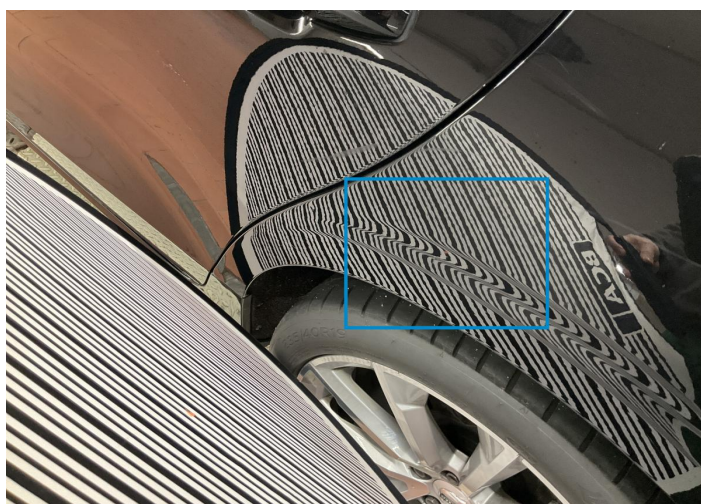
13	Trunk Carpet	Interior / Dirty
14	Trunk Carpet	Interior / Missing
15	Rim / Back Right	Out of Bodywork / Scratch
16	Door / Back Right	Paint / Scratch / Scuff
17	Door / Front Right	Paint / Scratch / Scuff
18	Mirror Shell / Front Right	Paint / Scratch / Scuff
19	Rim / Front Right	Out of Bodywork / Scratch
20	Bumper / Front	Paint / Scratch / Scuff



1. Hood
Bodywork / Dent / Dent -



2. Door / Front Left
Bodywork / Dent / Dent -



3. Side Panel / Back Left
Bodywork / Dent / Dent -



4. Bumper / Front
Paint / Scratch / Scuff -



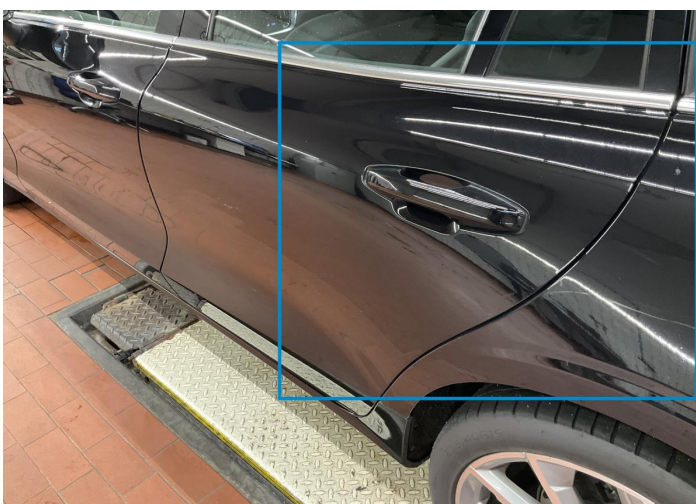
5. Rim / Front Left
Out of Bodywork / Scratch -



6. Mirror Shell / Front Left
Paint / Scratch / Scuff -



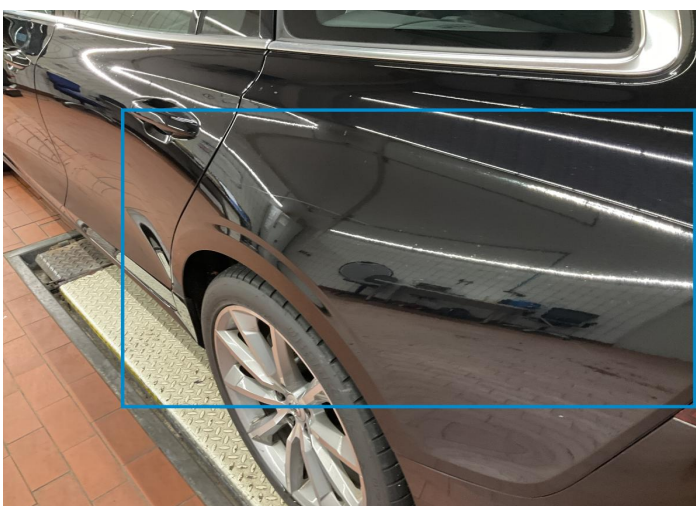
7. Door / Front Left
Paint / Scratch / Scuff -



8. Door / Back Left
Paint / Scratch / Scuff -



9. Rim / Back Left
Out of Bodywork / Scratch -



10. Side Panel / Back Left
Paint / Scratch / Scuff -



11. Bumper / Back
Bodywork / Breakage / Hole -



12. Bumper / Back
Paint / Scratch / Scuff -



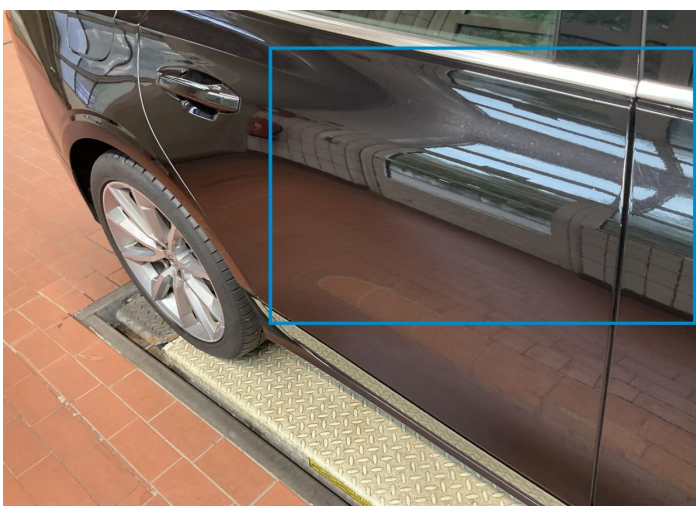
13. Trunk Carpet
Interior / Dirty -



14. Trunk Carpet
Interior / Missing -



15. Rim / Back Right
Out of Bodywork / Scratch -



16. Door / Back Right
Paint / Scratch / Scuff -



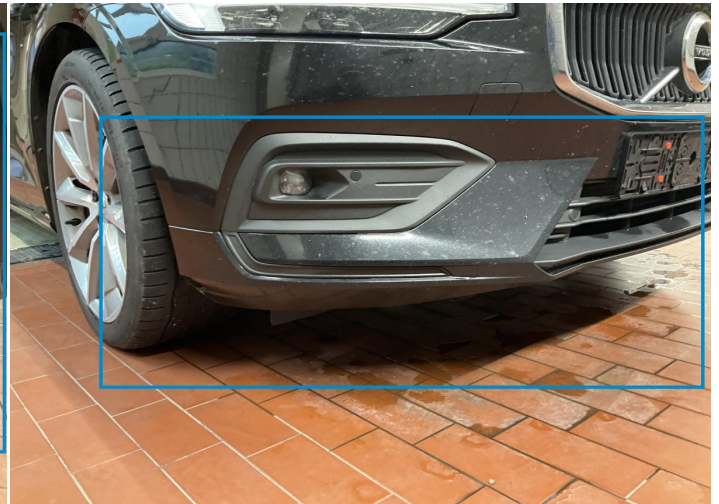
17. Door / Front Right
Paint / Scratch / Scuff -



18. Mirror Shell / Front Right
Paint / Scratch / Scuff -



19. Rim / Front Right
Out of Bodywork / Scratch -



20. Bumper / Front
Paint / Scratch / Scuff -

Mechanical Condition

Equipments Test

Central Locking	✓	Audio Equipment	✓
AC / Heating System	✓	Main & Spare Keys Functioning	✓
Electric Windows	✓	Navigation System	✓
Parking Sensors / Cameras Functioning	✓		

Control Lights

ABS Warning Light	✓	ESP Fault/Traction Control Malfunction Light	✓
Diesel Particulate Filter Light	✓	Airbag Warning Light	✓
Oil Pressure Warning Light	✓	Brake Warning Light	✓
Power Steering Warning Light	✓	Alternator / Battery	✓
No Dashboard Lights	✓	Display Defect	✓
Service Light	✓	Tire Pressure Monitoring System	✓

Engine

Engine Status / EML	✓	Engine Leak Visible	✓
Engine Starts	✓		

Gearbox

Gear Box	✓
----------	---

Levels

Brakes Fluid	NA	Coolant Fluid	NA
--------------	----	---------------	----

Test Drive Inspection

Steering Wheel			
Steering Noise / Anomaly		✔	
Engine			
Engine Noise	⚠	The Gears Scratch / Skip / Abnormal Operation	✔
Fume Quantity	✔	Power Loss	⚠
Brake			
Brake System Anomaly		✔	
General			
Test Driven Status		✔	
✔ <i>No troubles detected, good condition or correct tests, according to vehicle age and mileage</i>			
⚠ <i>Damages or malfunction detected that requires repairs by the buyer</i>			
NA <i>Not applicable</i>			
= <i>Not tested</i>			

Disclaimer

Please also note the "UserGuide condition report", which shows the scope of the vehicle description.

[User Guide](#)