



Expertise

Protocol number: 41728991
Order number / reference: 25231222
Inspection date: 26 Sept 2025

Manufacturer: Volvo	Model: V60 D3 Momentum Pro
VIN: YV1ZW72V1M2413986	



Vehicle details	
Manufacturer / Type / Model / Equipment	
Volvo V60 D3 Momentum Pro	
Vehicle Identification number	YV1ZW72V1M2413986
Mileage (Read)	114,960 km
First registration	4 Aug 2020
Number of holders	1
Next periodical technical inspection	10/2025
(Report not on hand)	
Power / Engine displacement	110 kw / 1,969 ccm
Fuel type / Cylinder	Diesel / 4
Gearbox / Number of gears	Manual / 6
Type of drive	Front drive
Type of vehicle	Station wagon
Colour / colour code	Bright-Silver
Doors / Seats	5 / 5
Upholstery type	Cloth
Colour of upholstery	Black



Vehicle details

Maintenance booklet / proof	digital proof / complete	Next maintenance in	106 Tag(e)
Last maintenance on / at	01/2025 at 101,471 km		
Key is / should be	3 / 3	FZG documents	ZB#2 (B) was available (copy), ZB#1 (S) was not available
		Letter No.	FU850438
Previous damage / Accident	Detectable	Repainting	None detectable
Inspection conditions	sufficient	Lifting equipment / pit	yes
Test drive	Not performed	Engine function test	Performed
Manufacturer key number/ type code number	9101 / BLZ 00053		
Emission standard	EURO6;WLTP;DG;PI/CI; M, N1 I	Fine dust sticker	
Permitted total weight	2,210 kg	Empty weight	

Tyres

Mounted tyres

#	Tyre size	Type of tyre	Manufacturer	Tread depth
1)	225/50 R17 98W	Summer tyres on Light alloy	Goodyear	6mm / 6mm
2)	225/50 R17 98W	Summer tyres on Light alloy	Goodyear	7mm / 7mm

Additional tyres

#	Tyre size	Type of tyre	Manufacturer	Tread depth
1)	215/60 R16 99H	Winter tyres on Light alloy	Goodyear	7mm / 7mm
2)	215/60 R16 99H	Winter tyres on Light alloy	Fulda	8mm / 8mm

Replacement

Typ	Tyre size	Type of tyre	Manufacturer	Tread depth
	Tirefit	Expiration date 05/2024		

Legend: Tread depth information for tires on the left is in the first place, for tires on the right is in the second place on the axle in the direction of travel



Equipment

Standard equipment

- ABS - Anti-lock braking system
- Driver and passenger side airbags with two-stage deployment system
- Outside temperature display
- Condensation sensor
- On-board computer with vehicle control functions
- Chrome applications on the side windows
- CleanZone air quality system
- Connected Safety
- Aluminum roof rails (integrated)
- Drive Mode
- Driver Alert
- Parking aid, rear
- Electronic differential lock Corner Traction Control (CTC)
- Electric windows front and rear
- Front grille in waterfall design in black
- Cruise control system with variable speed limit
- Automatic tailgate (electric)
- Rear window wiper
- Interior and exterior mirrors with automatic dimming
- Keyless Drive (electronic access system)
- Child safety lock (manual, rear doors)
- Headrests (5) front and rear,
- Loading box under the load compartment floor
- Load compartment blind
- Lane Keeping Aid (LKA) - Active lane keeping assistant
- LED headlight "Thor's Hammer"
- Steering wheel: 3-spoke leather steering wheel, anthracite
- Make-up mirrors for driver and passenger, illuminated
- Rear center armrest (folding) with cup holder
- Sensus navigation system
- Mesh pocket in the passenger footwell
- Oncoming Lane Mitigation
- Particle filter: Soot particle filter for diesel
- Radio: Sensus Connect infotainment system with high-performance sound
- Radio accessories: Two USB-C interfaces on the back of the tunnel console
- Road Sign Information (RSI)
- Wheels: Light alloy wheels 17" 5-twin-spoke design
- Wheel accessories: tire sealant
- Power steering, speed-dependent
- Seat belts
- Safety steering column (adaptive)
- Seats: Lumbar support (2-way electrically adjustable) for driver and front passenger seat
- Start/Stop technology
- Front passenger airbag can be switched off
- Electrically foldable exterior mirrors
- Exterior mirrors electrically adjustable and heated
- Hill Start Assist (HSA)
- Indicators (LED) integrated in exterior mirrors
- Brake light, third
- City Safety
- Color glazing
- roof edge spoiler
- Digital instrumentation 12.3" full-graphic display (31.2 cm diagonal, high-resolution)
- Deposits: Iron Ore
- Aluminum door sills with Volvo logo at the front
- ESC - driving dynamics control
- Automatic brake
- Luggage compartment partition net
- Transmission: 6-speed manual transmission
- Rear window, heated
- IDIS (Intelligent Driver Information System)
- Interior lighting
- Keyless start
- Automatic air conditioning
- Rear headrests foldable, electrically
- Stainless steel loading sill protection in the luggage compartment
- LED fog lights
- Steering wheel adjustable for height and length
- Steering wheel: Multifunction buttons on the steering wheel in black
- Front center armrest with integrated storage compartment and cup holders
- Emergency brake lights
- Parking brake, electric
- Upholstery: Textile comfort seats
- Radio accessories: Apple CarPlay and Android Auto
- Radio accessories: Digital radio reception (DAB+)
- Rain sensor
- Road Edge Detection
- Run-off Road Protection
- Wheels: Tire pressure monitoring system (passive)
- Leather gearshift lever
- Safety braking system with disc brakes all around (internally ventilated)
- Seats: Driver and passenger seats height adjustable (electrically)
- Seats: Rear seats in 40/60 split or fully foldable with through-loading function
- Tank filler neck with misfuelling protection
- Volvo On Call with WiFi hotspot
- Immobiliser



- Power socket
- Lashing eyes in the luggage compartment (foldable)
- Preparation for Trailer Stability Control (TSA)
- WHIPS whiplash protection system

- Central locking with two radio remote controls and integrated emergency keys

Extra equipment

- Windscreen, heater
- Package: Parking Assistance Package (front and rear parking sensors - rear view camera)
- Paintwork: metallic paint
- Package: Winter package (heated front seats - heated wiper blades and windshield washer nozzles (front) - heated steering wheel)

Brief expert findings

Documents submitted	At the time of the inspection, the registration certificate Part 2 (letter) was available, but the registration certificate Part 1 (certificate) was not. (Copy)
VIN comparison	The vehicle identification number (VIN) was read from the vehicle and its conformity with the submitted documents was verified during the inspection by the undersigned.
Inspection	The inspection conditions were sufficient for the assessment of the vehicle. Lifting equipment and a pit were available for examining the vehicle.
Test drive	No test drive/maneuvering was carried out during the inspection of the vehicle.
Engine function test	An engine test run was performed.

Value reducing factors

No.	Component group	Description
1	Equipment	Tirefit filler - Expired - Replace
2	Rear bumper	Reflector - right side - Scratch(es) - Replace
3	Side panel - rear right side	Side panel - Scratch(es) - Smart repair
4	Roof	Roof - dent(s) - Smooth repair work
5	Trim / covers	Door trim - rear right side - Scratched - Loss in value
6	Boot lid / rear door	Boot lid - Scratch(es) - Smart repair
7	Rear bumper	Rear bumper - Scratched - Paint
8	Front bumper	Front bumper - Scratched - Paint
9	Roof	Roof - Corrosion - Repair and paint

Wear and tear

No.	Component group	Description
1	Bonnet	Bonnet - Stone chips - No deduction
2	Mudguard - right side	Mudguard - right side - Stone chips - No deduction
3	Wing mirror - right side	Cap - Stone chips - No deduction
4	Rear bumper	Spoiler - Scratch(es) - No deduction
5	Seat - front	Backrest cover - right side (Verkleidung) - Scratch(es) - No deduction

The vehicle shows signs of wear commensurate with its age and use.

Missing parts

Description

Interior - Boot cover / roller cover



Previous damages

No.	Previous damage	Extent of damage (Net)
1	Rear, Provided by user / customer, from 30 Aug 2021	1.347,14 €
2	Front, Side - left, Provided by user / customer, from 15 Feb 2024	2.855,04 €

Order/Scope of order

The order was placed to prepare a sales report for the vehicle described. This includes the following:

- Description of core relevant information about the vehicle
- Documentation of equipment features
(Delivery by third-party service providers)
- Documentation of damage, defects, missing parts
- Documentation of previous damage, unrepaired previous damage, repainting
- a brief visual or functional inspection of the equipment details if possible.
(Functional tests of driver assistance systems are not included in the scope of services!)
- a photo documentation of the vehicle

Basis for the order

This product is based on the Alphabet Fuhrpark GmbH guidelines for vehicle returns and valuations. The expert makes the explicit findings in each individual case objectively within the framework of the specified standards based on his or her own expertise.

The vehicle inspection takes place in a disassembled state.

Damage or defects that can only be detected during disassembly/diagnosis work or through advanced knowledge remain within the scope of the prognosis risk. An extended risk exists for concealed defects caused by fraudulent deception and not identifiable by the expert.

Damage or defects resulting from normal use or wear and tear of the vehicle will be accepted according to the applicable standard.

There was no explicit identification or monetary consideration of the expected features within the product.

Features which in their nature and severity slightly exceed normal use but do not constitute unacceptable damage will be documented and identified under signs of use if necessary.

Damage or defects which, according to the underlying standard, can no longer be attributed to normal use or wear and tear are listed in the product under "Depreciating Factors".

Depending on the product specification, a monetary ID can be provided. If this takes place, the costs can be 100% d or pro rata depending on the vehicle's age and mileage.

Previous damages

According to available information previous damages were repaired at the vehicle. Traces of repairs, which allow conclusions about the area of repair, were not recognizable during the inspection.

Comments

- Winterradsatz ist kein Bestandteil des Auslieferumfangs.



Figure 1: Diagonal front (left)



Figure 2: Diagonal front (right)



Figure 3: Diagonal rear (left)



Figure 4: Diagonal rear (right)



Figure 5: Interior - front



Figure 6: Interior - rear



Figure 7: Instrument cluster



Figure 8: Instrument panel



Figure 9: Interior 360° view



Figure 10: Cargo area



Figure 11: VIN



Figure 12: Mounted tyres

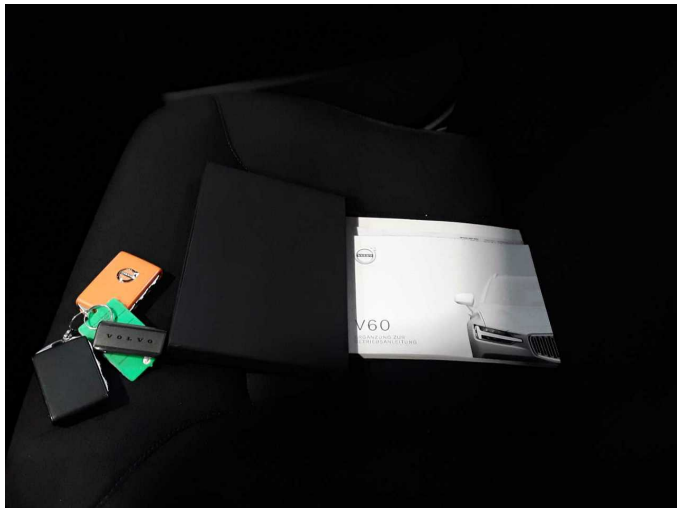


Figure 13: Documents



Figure 14: Documents

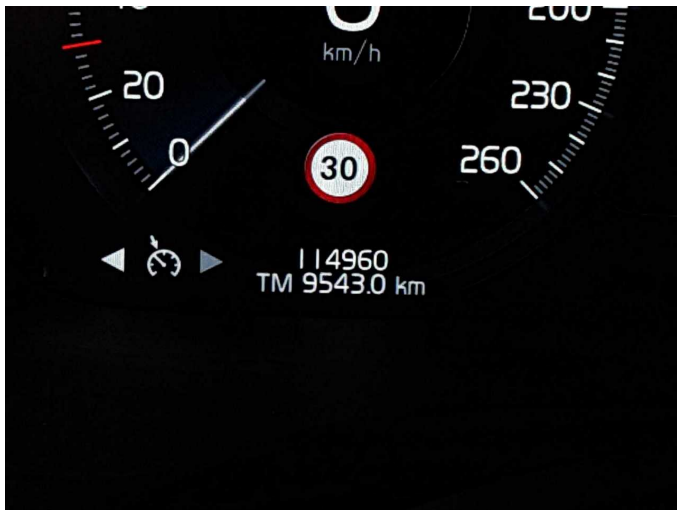


Figure 15: Documents



Figure 16: Additional tyres

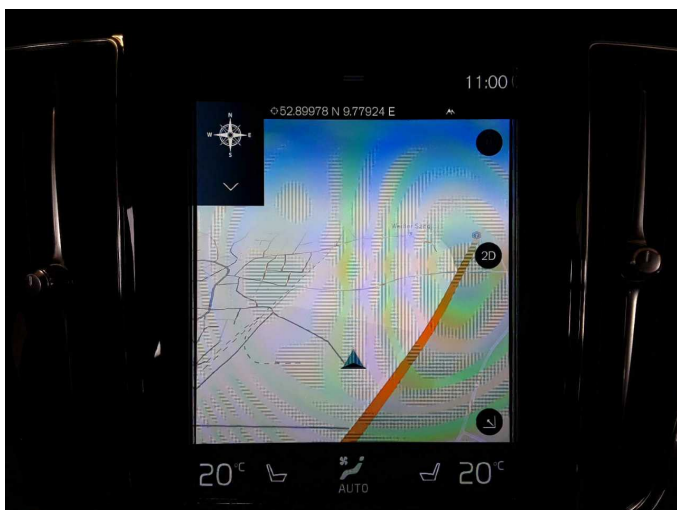


Figure 17: Navigation



Figure 18: Misc.



Figure 19: Misc.



Figure 20: Misc.



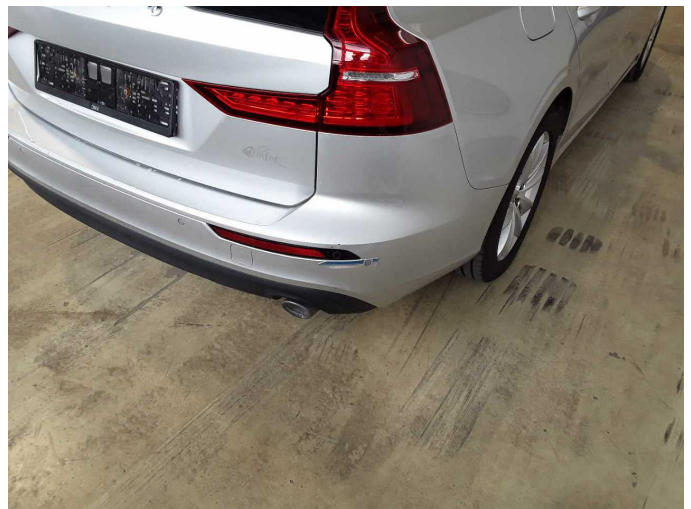
Figure 21: Misc.



Figure 22: Misc.



Damage 1: Equipment: Tirefit filler - Expired - Replace



Damage 2: Rear bumper: Reflector - right side - Scratch(es) - Replace



Damage 2: Rear bumper: Reflector - right side - Scratch(es) - Replace



Damage 3: Side panel - rear right side: Side panel - Scratch(es) - Smart repair



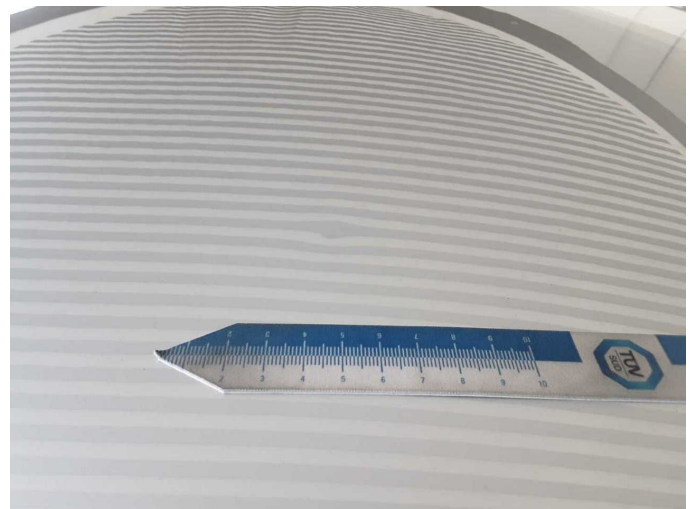
Damage 3: Side panel - rear right side: Side panel - Scratch(es) - Smart repair



Damage 4: Roof: Roof - dent(s) - Smooth repair work



Damage 4: Roof: Roof - dent(s) - Smooth repair work



Damage 4: Roof: Roof - dent(s) - Smooth repair work



Damage 5: Trim / covers: Door trim - rear right side - Scratched - Loss in value



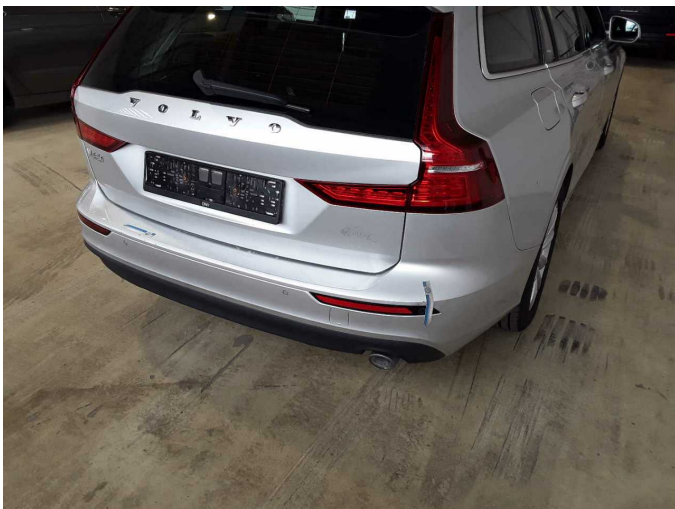
Damage 5: Trim / covers: Door trim - rear right side - Scratched - Loss in value



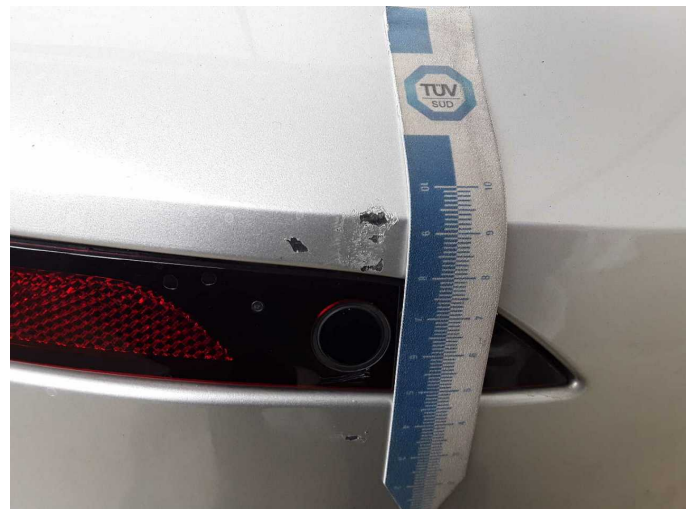
Damage 6: Boot lid / rear door: Boot lid - Scratch(es) - Smart repair



Damage 6: Boot lid / rear door: Boot lid - Scratch(es) - Smart repair



Damage 7: Rear bumper: Rear bumper - Scratched - Paint



Damage 7: Rear bumper: Rear bumper - Scratched - Paint



Damage 7: Rear bumper: Rear bumper - Scratched - Paint



Damage 8: Front bumper: Front bumper - Scratched - Paint



Damage 8: Front bumper: Front bumper - Scratched - Paint



Damage 8: Front bumper: Front bumper - Scratched - Paint



Damage 9: Roof: Roof - Corrosion - Repair and paint



Damage 9: Roof: Roof - Corrosion - Repair and paint



Missing part 1: Interior: Boot cover / roller cover - Missing - Replace



Wartungshistorie

(gemäß Auftraggeber Informationen)

Fahrgestellnummer: YV1ZW72V1M2413986
Hersteller / Modell: VOLVO VOLVO V60 D3 Momentum Pro

Datum	KM-Stand	Beschreibung
14.01.2025	101.741	Bremsflüssigkeit ern; Kraftstofffilter ern; Luftfiltereinsatz ern; Motoröl b. Wartung; Ölfilter ern; Regelwartungsdienst; Reparatur Sonstiges; Wartung Sonstiges
09.10.2023	78.104	AU; Bremse Sonstiges; Bremsklötze hinten; Bremsscheiben + Klötze h; Bremsscheiben hinten; Motoröl b. Wartung; Ölfilter ern; Regelwartungsdienst; Wartung Sonstiges
07.09.2022	61.650	Kraftstofffilter ern; Luftfiltereinsatz ern; Motoröl b. Wartung; Regelwartungsdienst; Wartung Sonstiges
12.06.2021	29.715	VOLVO - Inspektion; Motoröl b. Wartung