



Expertise

Protocol number: 41127631
Order No. / Reference: 25122362
Inspection date: 13 Aug 2025

Manufacturer: Volvo	Model: XC40 D3 Geartronic R-Design
VIN: YV1XZ72VDL2346857	



Vehicle details	
Manufacturer / Type / Model / Equipment	
Volvo XC40 D3 Geartronic R-Design	
Vehicle Identification number	YV1XZ72VDL2346857
Mileage (Read)	29,234 km
First registration	26 Aug 2020
Number of holders	1
Power / Engine displacement	110 kw / 1,969 ccm
Fuel type / Cylinder	Diesel / 4
Gearbox / Number of gears	Automatic / 8
Type of drive	Front drive
Type of vehicle	SUV
Colour / colour code	Inscription Crystal Weiß-Perleffekt
Doors / Seats	5 / 5
Upholstery type	Leather
Colour of upholstery	Black



Vehicle details

Maintenance booklet / proof	digital proof / complete	Next maintenance in	116 Tag(e)
Last maintenance on / at	12/2024 at 25,756 km		
Key is / should be	4 / 4	FZG documents	ZB#2 (B) was available (copy), ZB#1 (S) was not available
		Letter No.	FU847186
Previous damage / Accident	Detectable	Repainting	Detectable
Inspection conditions	sufficient	Lifting equipment / pit	yes
Test drive	Not performed	Engine function test	Performed
Manufacturer key number/ type code number	9101 / BMD 00030		
Emission standard	EURO6;WLTP;DG;PI/CI; M, N1 I	Fine dust sticker	
Permitted total weight	2,180 kg	Empty weight	

Tyres

Mounted tyres

#	Tyre size	Type of tyre	Manufacturer	Tread depth
1)	235/55 R18 100V	Summer tyres on Light alloy	Continental	5mm / 5mm
2)	235/55 R18 100V	Summer tyres on Light alloy	Continental	5mm / 5mm

Additional tyres

#	Tyre size	Type of tyre	Manufacturer	Tread depth
1)	235/55 R18 104V	Winter tyres on Light alloy	Continental	6mm / 6mm
2)	235/55 R18 104V	Winter tyres on Light alloy	Continental	7mm / 7mm

Replacement

Typ	Tyre size	Type of tyre	Manufacturer	Tread depth
	Tirefit	Expiration date 04/2025		

Legend: Tread depth information for tires on the left is in the first place, for tires on the right is in the second place on the axle in the direction of travel



Equipment

Standard equipment

- Waste bin integrated in center console (removable)
- Airbag, passenger side can be switched off
- Airbag, knee airbag for driver
- Active seat belts with belt tensioners
- Ambient lighting
- Attention warning
- Fold-out (bag) hook on the glove compartment
- Heated exterior mirrors and rear window
- Hill start assist
- Brake light, third
- Connected Safety
- roof edge spoiler
- diesel particulate filter
- tachometer
- through-loading hatch behind the center armrest in the rear
- Insert aluminum insert CUTTING EDGE
- Electronic differential lock
- Chassis: Dynamically designed
- Electric windows front and rear
- Speed limit (variable)
- Transmission: 8-speed Geartronic automatic transmission
- Automatic tailgate
- Rear window wiper
- Interior lighting, extended
- ISOFIX mount for the outer rear seats
- Keyless start
- Automatic climate control with 2-zone temperature control
- Front headrests
- Lane Keeping Aid (LKA)
- LED headlight "Thor's Hammer"
- Steering wheel adjustable for height and length
- Steering wheel: Multifunction buttons on the steering wheel in black
- Driver's make-up mirror, illuminated
- Rear center armrest with two integrated cup holders
- Emergency brake lights
- Optical underbody protection front and rear in high-gloss black
- R Design
- Radio accessories: USB port in the center tunnel (front and rear)
- Road Edge Detection
- Run-off Road Protection
- Wheels: Tire sealant
- Rear seats in 60/40 or completely foldable
- Seats: Passenger seat height adjustable
- Seats: Leg rest adjustable (manually) for driver and passenger seat
- Seats: Lumbar support (4-way electrically adjustable) for driver and front passenger seat
- Start/Stop technology
- Driver and passenger side airbags with two-stage deployment system
- Airbag, side airbags for driver and front passenger and curtain/shoulder airbags (IC) for all occupants
- Anti-lock braking system (ABS) with electronic brake force distribution
- Electrically foldable exterior mirrors
- Hill descent assistant
- Indicators (LED) integrated in exterior mirrors
- City Safety
- Anthracite headliner
- Roof rails in high-gloss black (integrated)
- Digital instrumentation
- Drive Mode (driving mode settings for engine, transmission, steering and brakes)
- Parking aid, rear
- Electronic stability control
- Chassis: Sports suspension
- Automatic brake
- Cruise control system
- Belt height adjustment at the front
- Rear window, heated
- Interior and exterior mirrors automatically dimming
- Intelligent driver information system
- Keyless Drive
- Parental controls
- Headrests fixed at the rear
- Paintwork: Contrast roof in Black Stone
- LED fog lights
- Leather gear lever R Design
- Steering wheel: 3-spoke leather steering wheel with plain decorative inlay
- Steering wheel: R DESIGN sports steering wheel with perforated leather parts and R-DESIGN emblem
- Front center armrest with integrated storage compartment
- Oncoming Lane Mitigation
- Package: Business Package
- Parking brake (electric)
- Radio accessories: Digital radio reception (DAB+)
- Rain sensor
- Tire pressure monitoring system
- Road Sign Information - Traffic Sign Recognition
- Wheels: 18" 5-twin-spoke R DESIGN diamond cut/graphite alloy wheels
- Power steering, speed-dependent
- Seats: Passenger seat length adjustable



- 12 volt socket at the front
- First aid kit and warning triangle
- Glazing: Color glazing
- Volvo On Call with Wi-Fi hotspot and private car sharing function
- Immobiliser
- Central locking with two radio remote controls and integrated emergency keys

- Seats: Driver's seat height and length adjustable including tilt adjustment
- Seats: Whiplash protection system WHIPS
- Voice control
- 12 volt socket in the luggage compartment
- Textile floor mats: R DESIGN textile floor mats front and rear
- Lashing eyes (four) in the luggage compartment
- Preparation for Trailer Stability Control (TSA)
- Warning tone/indicator when seat belts are not fastened (for all seats)

Extra equipment

- Trailer hitch (semi-electric)
- Child safety lock for the rear doors (electric)
- Paint: Inscription Crystal White Pearl Effect
- Engine designation, omission
- Package: Seat Comfort Package (Electrically adjustable driver and front passenger seats with memory function for driver seat and exterior mirror settings (stored in the remote control))
- Package: Winter Package Pro (Auxiliary heater with timer (fuel-powered) - Remote activation via smartphone app possible in conjunction with Volvo On Call - Heated rear seats (outer seats of the 2nd row))
- Upholstery: Leather (including rear center armrest with two integrated cup holders and through-loading hatch behind the center armrest in the rear)
- Glazing: Side and rear windows tinted (from B-pillar)

- Windscreen, heater
- Headrests of the 2nd row of seats can be folded down (electrically)
- Package: Cargo Compartment Package Pro (Luggage compartment partition net - Foldable cargo floor with fastening system for carrying bags in the luggage compartment - Electric folding headrests of the 2nd row of seats - Storage compartment under the driver's seat)
- Package: Xenium package (front and rear parking sensors - rear view camera - Sensus Connect infotainment system with PREMIUM SOUND by Harman Kardon)
- Panoramic glass sunroof with lifting function (electric) (with integrated, continuously adjustable sunshade)
- Rear view camera
- Seats: Driver's seat electrically adjustable (with memory function for driver's seat and exterior mirror settings (stored in radio remote control))

Brief expert findings

Documents submitted	At the time of the inspection, the registration certificate Part 2 (letter) was available, but the registration certificate Part 1 (certificate) was not. (Copy)
VIN comparison	The vehicle identification number (VIN) was read from the vehicle and its conformity with the submitted documents was verified during the inspection by the undersigned.
Inspection	The inspection conditions were sufficient for the assessment of the vehicle. Lifting equipment and a pit were available for examining the vehicle.
Test drive	No test drive/maneuvering was carried out during the inspection of the vehicle.
Engine function test	An engine test run was performed.

Value reducing factors

No.	Component group	Description
1	Misc.	Main inspection - No evidence - No deduction
2	Equipment	Tirefit filler - Expired - Replace
3	Trim / covers	Boot lid - interior trim - Scratch(es) - Loss in value
4	Wing mirror - right side	Cap - Scratch(es) - Smart repair
5	Indicator - front	Mirror - right side - Scratch(es) - Replace
6	Trim / covers	Door trim - rear right side - Scratch(es) - Loss in value
7	Side panel - rear right side	Side panel - Scratch(es) - Smart repair
8	Roof	Roof rail - right side - Scratch(es) - Smart repair



No.	Component group	Description
9	Rear bumper	Spoiler - Scratch(es) - Loss in value
10	Rear bumper	Rear bumper - Scratch(es) - Paint

Wear and tear

No.	Component group	Description
1	Vehicle glazing	Windscreen - Stone chips - No deduction
2	Bonnet	Bonnet - Stone chips - No deduction
3	Front bumper	Front bumper - Stone chips - No deduction
4	Roof	Roof rail - right side - Scratch(es) - No deduction

The vehicle shows signs of wear commensurate with its age and use.

Previous damages

No.	Previous damage	Extent of damage (Net)
1	Side - left, Provided by user / customer, from 30 Sept 2021	2.375,23 €

Accident damages

No.	Accident
1	Side right

Repainting

No.	Repainting
1	Mudguard - left side

Paint coat thickness measurement

Mudguard - left side	241 µm
----------------------	--------

Order/Scope of order

The order was placed to prepare a sales report for the vehicle described. This includes the following:

- Description of core relevant information about the vehicle
- Documentation of equipment features
(Delivery by third-party service providers)
- Documentation of damage, defects, missing parts
- Documentation of previous damage, unrepaired previous damage, repainting
- a brief visual or functional inspection of the equipment details if possible.
(Functional tests of driver assistance systems are not included in the scope of services!)
- a photo documentation of the vehicle



Basis for the order

This product is based on the Alphabet Fuhrpark GmbH guidelines for vehicle returns and valuations. The expert makes the explicit findings in each individual case objectively within the framework of the specified standards based on his or her own expertise.

The vehicle inspection takes place in a disassembled state.

Damage or defects that can only be detected during disassembly/diagnosis work or through advanced knowledge remain within the scope of the prognosis risk. An extended risk exists for concealed defects caused by fraudulent deception and not identifiable by the expert.

Damage or defects resulting from normal use or wear and tear of the vehicle will be accepted according to the applicable standard.

There was no explicit identification or monetary consideration of the expected features within the product.

Features which in their nature and severity slightly exceed normal use but do not constitute unacceptable damage will be documented and identified under signs of use if necessary.

Damage or defects which, according to the underlying standard, can no longer be attributed to normal use or wear and tear are listed in the product under "Depreciating Factors".

Depending on the product specification, a monetary ID can be provided. If this takes place, the costs can be 100% d or pro rata depending on the vehicle's age and mileage.

Previous damages

Non-repaired previous damages were found at the vehicle. The necessary repair costs are listed in the expert report or if necessary, are listed in detail in a separately enclosed repair cost calculation.



Figure 1: Diagonal front (left)



Figure 2: Diagonal front (right)



Figure 3: Diagonal rear (left)



Figure 4: Diagonal rear (right)



Figure 5: Interior - front



Figure 6: Interior - rear



Figure 7: Instrument cluster



Figure 8: Instrument panel



Figure 9: interior 360° view



Figure 10: Cargo area



Figure 11: VIN



Figure 12: Mounted tyres



Figure 13: Documents



Figure 14: Additional tyres

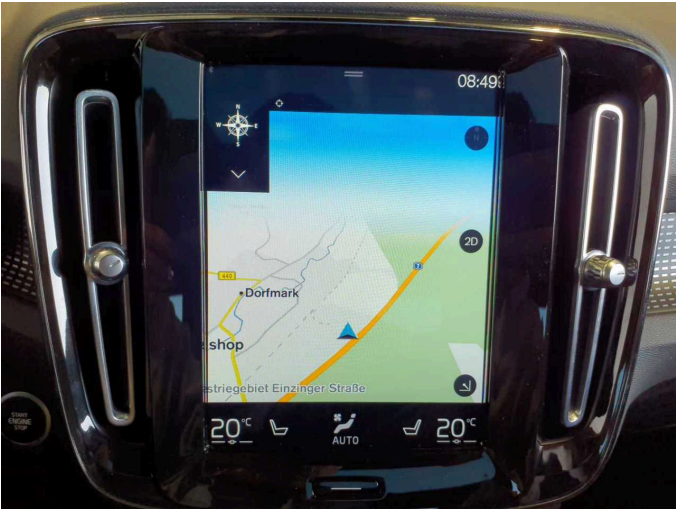


Figure 15: Navigation



Figure 16: Misc.



Figure 17: Misc.



Figure 18: Misc.



Figure 19: Misc.



Figure 20: Misc.



Figure 21: Misc.



Figure 22: Misc.



Figure 23: Misc.



Figure 24: Misc.

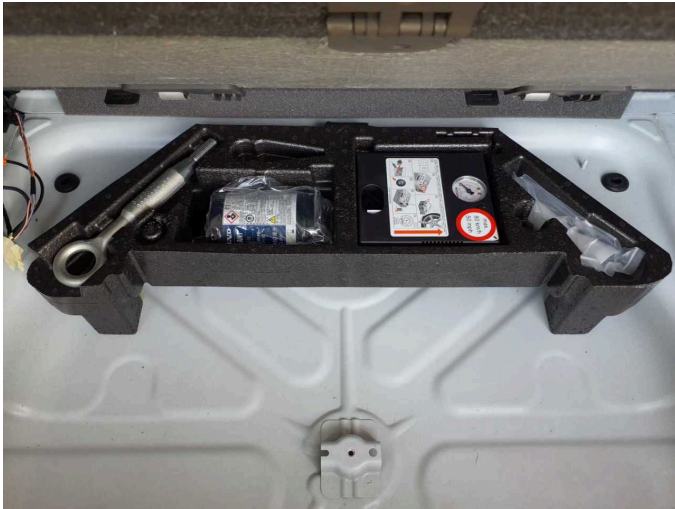
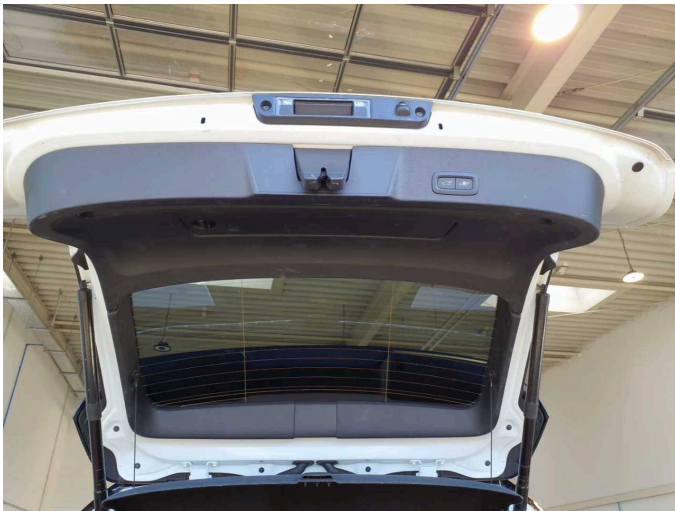


Figure 25: Misc.



Damage 2: Equipment: Tirefit filler - Expired - Replace



Damage 3: Trim / covers: Boot lid - interior trim - Scratch(es) - Loss in value



Damage 3: Trim / covers: Boot lid - interior trim - Scratch(es) - Loss in value



Damage 3: Trim / covers: Boot lid - interior trim - Scratch(es) - Loss in value



Damage 3: Trim / covers: Boot lid - interior trim - Scratch(es) - Loss in value



Damage 4: Wing mirror - right side: Cap - Scratch(es) - Smart repair



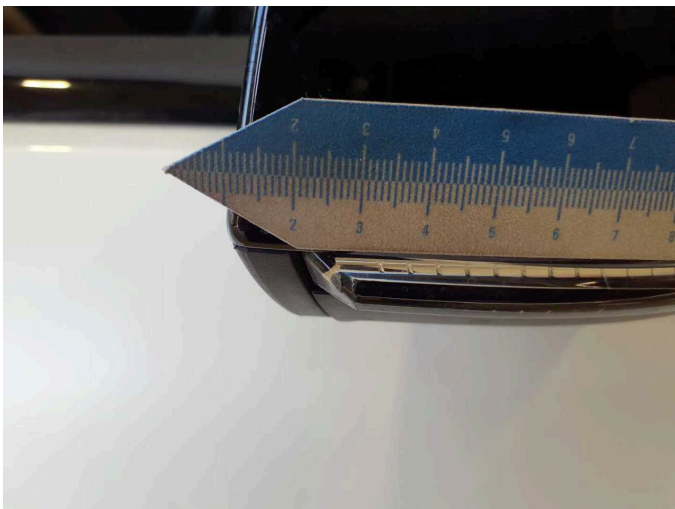
Damage 4: Wing mirror - right side: Cap - Scratch(es) - Smart repair



Damage 5: Indicator - front: Mirror - right side - Scratch(es) - Replace



Damage 5: Indicator - front: Mirror - right side - Scratch(es) - Replace



Damage 5: Indicator - front: Mirror - right side - Scratch(es) - Replace



Damage 5: Indicator - front: Mirror - right side - Scratch(es) - Replace



Damage 6: Trim / covers: Door trim - rear right side - Scratch(es) - Loss in value



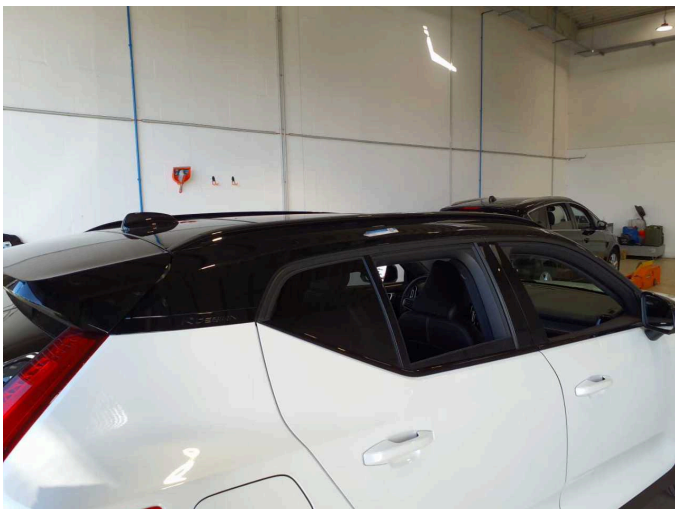
Damage 6: Trim / covers: Door trim - rear right side - Scratch(es) - Loss in value



Damage 7: Side panel - rear right side: Side panel - Scratch(es) - Smart repair



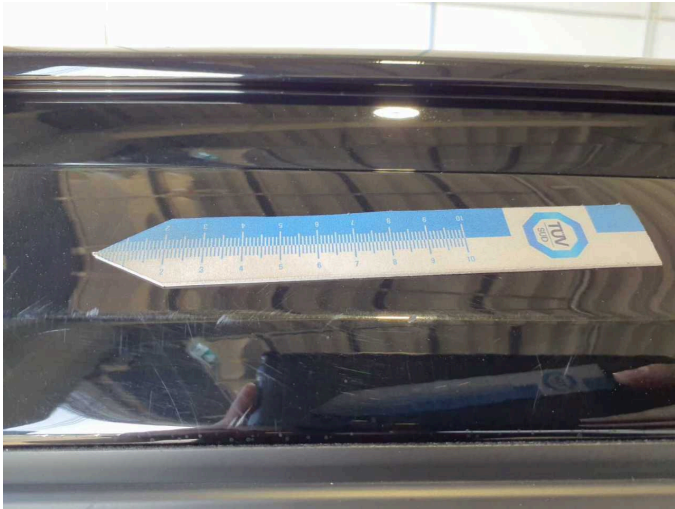
Damage 7: Side panel - rear right side: Side panel - Scratch(es) - Smart repair



Damage 8: Roof: Roof rail - right side - Scratch(es) - Smart repair



Damage 8: Roof: Roof rail - right side - Scratch(es) - Smart repair



Damage 8: Roof: Roof rail - right side - Scratch(es) - Smart repair



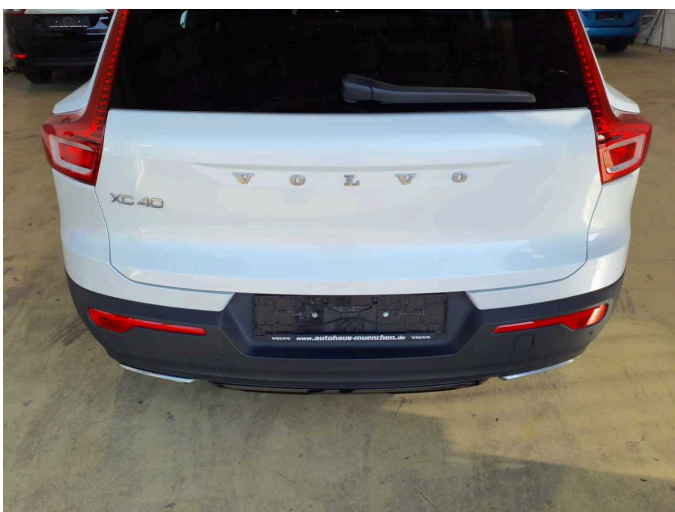
Damage 9: Rear bumper: Spoiler - Scratch(es) - Loss in value



Damage 9: Rear bumper: Spoiler - Scratch(es) - Loss in value



Damage 9: Rear bumper: Spoiler - Scratch(es) - Loss in value



Damage 9: Rear bumper: Spoiler - Scratch(es) - Loss in value



Damage 10: Rear bumper: Rear bumper - Scratch(es) - Paint



Damage 10: Rear bumper: Rear bumper - Scratch(es) - Paint



Damage 10: Rear bumper: Rear bumper - Scratch(es) - Paint



Damage 10: Rear bumper: Rear bumper - Scratch(es) - Paint



Damage 10: Rear bumper: Rear bumper - Scratch(es) - Paint



Accident 1: Side right



Accident 1: Side right



Accident 1: Side right



Accident 1: Side right



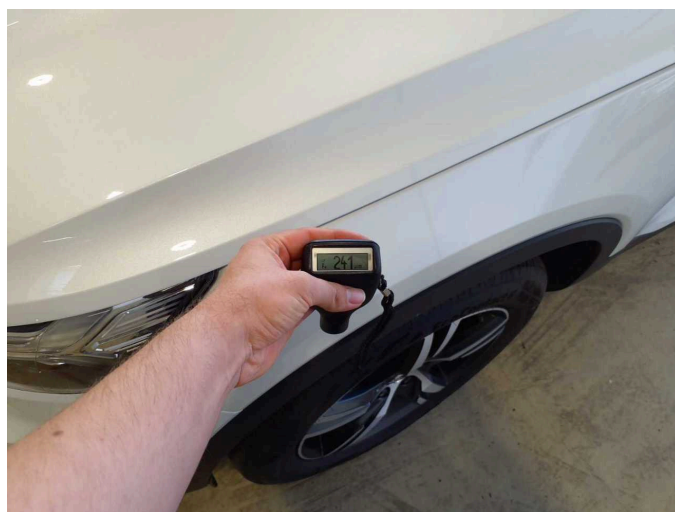
Accident 1: Side right



Accident 1: Side right



Accident 1: Side right



Repainting 1: Mudguard - left side



Repainting 1: Mudguard - left side



Wartungshistorie

(gemäß Auftraggeber Informationen)

Fahrgestellnummer: YV1XZ72VDL2346857

Hersteller / Modell: VOLVO VOLVO XC40 D3 Geartronic R-Design

Datum	KM-Stand	Beschreibung
11.12.2024	25.756	Bremsflüssigkeit; Bremsflüssigkeit ern; Motoröl b. Wartung; Ölfilter ern; Regelwartungsdienst; Wartung Sonstiges