



Expertise

Protocol number: 41199303  
Order No. / Reference: 25104059  
Inspection date: 20 Aug 2025

Manufacturer: Volvo

Model: XC40 D3 Momentum Pro

VIN: YV1XZ72V1M2398979



Vehicle details

Manufacturer / Type / Model / Equipment

Volvo XC40 D3 Momentum Pro

Vehicle Identification number YV1XZ72V1M2398979

Mileage (Read) 109,484 km

First registration 21 Jul 2020

Number of holders 1

Power / Engine displacement 110 kw / 1,969 ccm

Fuel type / Cylinder Diesel / 4

Gearbox / Number of gears Manual / 6

Type of drive Front drive

Type of vehicle SUV

Colour / colour code Onyx Schwarz-Metallic

Doors / Seats 5 / 5

Upholstery type Cloth

Colour of upholstery Anthracite-Black

Driving readiness Not roadworthy /  
moveable



Vehicle details

Maintenance booklet / proof	digital proof / incomplete	Next maintenance in	0 km
Last maintenance on / at	08/2024 at 87,611 km		
Key is / should be	2 / 2	FZG documents	ZB#2 (B) was available (copy), ZB#1 (S) was not available
		Letter No.	FU849102
Previous damage / Accident	None detectable	Repainting	None detectable
Inspection conditions	sufficient	Lifting equipment / pit	yes
Test drive	Not possible to drive	Engine function test	Performed
Driving readiness	Not roadworthy / moveable		
Manufacturer key number/ type code number	9101 / BMD 00035		
Emission standard	EURO6;WLTP;DG;PI/CI; M, N1 I	Fine dust sticker	
Permitted total weight	2,120 kg	Empty weight	

Tyres

Mounted tyres

#	Tyre size	Type of tyre	Manufacturer	Tread depth
1)	235/50 R19 103V	Summer tyres on Light alloy	Continental	5mm / 5mm
2)	235/50 R19 103V	Summer tyres on Light alloy	Pirelli	6mm / 6mm

Replacement

Typ	Tyre size	Type of tyre	Manufacturer	Tread depth
	Tirefit	Expiration date 06/2025		

Legend: Tread depth information for tires on the left is in the first place, for tires on the right is in the second place on the axle in the direction of travel

## Equipment

### Standard equipment

- Driver and passenger side airbags with two-stage deployment system
- Airbag, side airbags for driver and front passenger and curtain/shoulder airbags (IC) for all occupants
- Attention warning
- Fold-out (bag) hook on the glove compartment
- Heated exterior mirrors and rear window
- Hill start assist
- Brake light, third
- Connected Safety
- Roof rails made of satin-matt aluminum (integrated)
- Digital instrumentation
- Drive Mode (driving mode settings for engine, transmission, steering and brakes)
- Electronic differential lock
- Chassis: Dynamically designed
- Automatic brake
- Cruise control system
- Belt height adjustment at the front
- Rear window, heated
- Interior and exterior mirrors automatically dimming
- Intelligent driver information system
- Keyless Drive
- Parental controls
- Headrests fixed at the rear
- Lane Keeping Aid (LKA)
- Leather gearshift lever
- Steering wheel: 3-spoke leather steering wheel with plain decorative inlay
- Driver's make-up mirror, illuminated
- Front center armrest with integrated storage compartment
- Oncoming Lane Mitigation
- Package: Business Package
- Parking brake (electric)
- Radio: Sensus Connect infotainment system with HIGH PERFORMANCE SOUND
- Rain sensor
- Tire pressure monitoring system
- Road Sign Information - Traffic Sign Recognition
- Wheels: Tire sealant
- Power steering, speed-dependent
- Seats: Passenger seat length adjustable
- Seats: Lumbar support (4-way electrically adjustable) for driver and front passenger seat
- Voice control
- 12 volt socket in the luggage compartment
- Textile floor mats front and rear
- Airbag, passenger side can be switched off
- Airbag, knee airbag for driver
- Active seat belts with belt tensioners
- Anti-lock braking system (ABS) with electronic brake force distribution
- Electrically foldable exterior mirrors
- Hill descent assistant
- Indicators (LED) integrated in exterior mirrors
- City Safety
- roof edge spoiler
- diesel particulate filter
- tachometer
- through-loading hatch behind the center armrest in the rear
- Inlay aluminum inlay URBAN GRID
- Electronic stability control
- Electric windows front and rear
- Speed limit (variable)
- Transmission: 6-speed manual transmission
- Automatic tailgate
- Rear window wiper
- Interior lighting, extended
- ISOFIX mount for the outer rear seats
- Keyless start
- Automatic climate control with 2-zone temperature control
- Front headrests
- LED fog lights
- Steering wheel adjustable for height and length
- Steering wheel: Multifunction buttons on the steering wheel in black
- Rear center armrest with two integrated cup holders
- Emergency brake lights
- Optical underbody protection front and rear in high-gloss silver
- Upholstery: Textile (Rivel Chine)
- Radio accessories: Digital radio reception (DAB+)
- Radio accessories: USB port in the center tunnel (front and rear)
- Road Edge Detection
- Run-off Road Protection
- Rear seats in 60/40 or completely foldable
- Seats: Passenger seat height adjustable
- Seats: Driver's seat height and length adjustable including tilt adjustment
- Seats: Whiplash protection system WHIPS
- Start/Stop technology
- 12 volt socket at the front
- First aid kit and warning triangle
- Lashing eyes (four) in the luggage compartment
- Preparation for Trailer Stability Control (TSA)



- Glazing: Color glazing
- Volvo On Call with Wi-Fi hotspot and private car sharing function
- Immobiliser
- Central locking with two radio remote controls and integrated emergency keys

- Warning tone/indicator when seat belts are not fastened (for all seats)

### Extra equipment

- Alarm system with motion/tilt sensor (security locking and private locking (separate trunk locking))
- Paintwork: metallic paint
- Package: Cargo Compartment Package Pro (Luggage compartment partition net - Foldable cargo floor with fastening system for carrying bags in the luggage compartment - Electric folding headrests of the 2nd row of seats - Storage compartment under the driver's seat)
- Package: Lights (Headlights - Full-LED "Thor's Hammer" headlights with dynamic cornering lights, high beam assistant, automatic headlight range adjustment, and integrated LED daytime running lights. Interior lighting: - Ambient lighting (multiple) front/rear - Exit lights at the front - Illuminated door pockets at the front, cup holders at the front, decorative inlays - Decorative lighting in the front doors - Lighting on the rear side of the center console - Rear reading lights - Work light on the trunk lid)
- Parking camera with 360° surround view
- Wheels: 19" 5-V-spoke light alloy wheels, diamond cut/black (7.5 x 19" with 235/50 R19 tires)
- Seats: Driver's seat electrically adjustable (with memory function for driver's seat and exterior mirror settings (stored in radio remote control))
- Parking aid, front and rear
- IntelliSafe Surround (Blind Spot Information System - Blind Spot Assistant including lane change warning of rapidly approaching vehicles, including steering intervention if warning signals are ignored - Cross Traffic Alert - Cross-traffic warning with braking intervention - Warning of vehicles, cyclists, and pedestrians approaching from the side when reversing out of a parking space, including braking to a standstill if warning signals are ignored - Rear Impact Mitigation - Preventative protection in the event of an impending rear-end collision)
- Package: Parking assistance package (front and rear parking sensors - rear view camera)
- Package: Winter Package Pro (steering wheel heating - auxiliary heating with timer (fuel-powered) - remote activation via smartphone app possible in conjunction with Volvo On Call - heated rear seats (outer seats of the 2nd row) - heated windscreen washer nozzles - heated front seats)
- Seats: Leg rest adjustable (manually) for driver and passenger seat
- Phone: Inductive smartphone charging system (charges smartphones that support the Qi standard wirelessly on a charging surface)

### Brief expert findings

Documents submitted	At the time of the inspection, the registration certificate Part 2 (letter) was available, but the registration certificate Part 1 (certificate) was not. (Copy)
VIN comparison	The vehicle identification number (VIN) was read from the vehicle and its conformity with the submitted documents was verified during the inspection by the undersigned.
Inspection	The inspection conditions were sufficient for the assessment of the vehicle. Lifting equipment and a pit were available for examining the vehicle.
Test drive	It was not possible to drive the vehicle at the time of the inspection.
Engine function test	An engine test run was performed.
Driving readiness	At the time of inspection, the vehicle was not drivable under its own power, but can be moved on its own axle with the aid of auxiliary equipment.

### Value reducing factors

No.	Component group	Description
1	Equipment	Tirefit filler - Expired - Replace
2	Interior	Cargo area floor - Soiled - Clean
3	Side panel - rear left side	Side panel - Scratch(es) - Smart repair
4	Wheel / tyres	Tyre - front right side - Porous / cracked - Replace
5	Misc.	Inspection / maintenance - Due - Perform
6	Bonnet	Bonnet - Stone chips - Paint



No.	Component group	Description
7	Door - front right side	Door - Scratch(es) - Paint
8	Instrument panel	Instrument cluster - Scratch(es) - Replace

## Wear and tear

No.	Component group	Description
1	Front bumper	Front bumper - Stone chips - No deduction

The vehicle shows signs of wear commensurate with its age and use.

## Order/Scope of order

The order was placed to prepare a sales report for the vehicle described. This includes the following:

- Description of core relevant information about the vehicle
- Documentation of equipment features  
(*Delivery by third-party service providers*)
- Documentation of damage, defects, missing parts
- Documentation of previous damage, unrepaired previous damage, repainting
- a brief visual or functional inspection of the equipment details if possible.  
(*Functional tests of driver assistance systems are not included in the scope of services!*)
- a photo documentation of the vehicle

## Basis for the order

This product is based on the Alphabet Fuhrpark GmbH guidelines for vehicle returns and valuations. The expert makes the explicit findings in each individual case objectively within the framework of the specified standards based on his or her own expertise.

The vehicle inspection takes place in a disassembled state.

Damage or defects that can only be detected during disassembly/diagnosis work or through advanced knowledge remain within the scope of the prognosis risk. An extended risk exists for concealed defects caused by fraudulent deception and not identifiable by the expert.

Damage or defects resulting from normal use or wear and tear of the vehicle will be accepted according to the applicable standard.

There was no explicit identification or monetary consideration of the expected features within the product.

Features which in their nature and severity slightly exceed normal use but do not constitute unacceptable damage will be documented and identified under signs of use if necessary.

Damage or defects which, according to the underlying standard, can no longer be attributed to normal use or wear and tear are listed in the product under "Depreciating Factors".

Depending on the product specification, a monetary ID can be provided. If this takes place, the costs can be 100% d or pro rata depending on the vehicle's age and mileage.

## Previous damages

Apparently, no repaired previous damage could be found on the vehicle.





Figure 1: Diagonal front (left)



Figure 2: Diagonal front (right)



Figure 3: Diagonal rear (left)



Figure 4: Diagonal rear (right)



Figure 5: Interior - front



Figure 6: Interior - rear





Figure 7: Instrument cluster



Figure 8: Instrument panel



Figure 9: interior 360° view



Figure 10: Cargo area

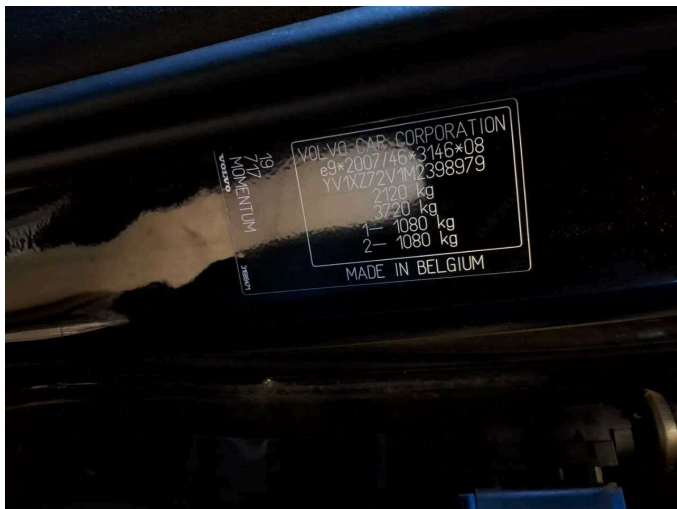


Figure 11: VIN



Figure 12: Mounted tyres

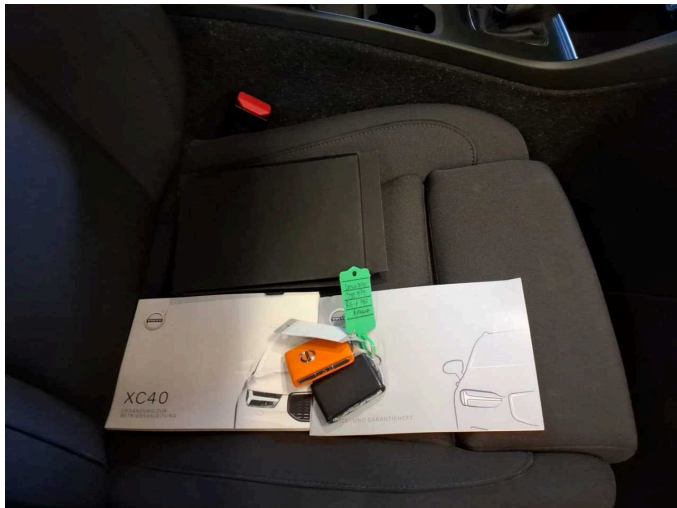


Figure 13: Documents

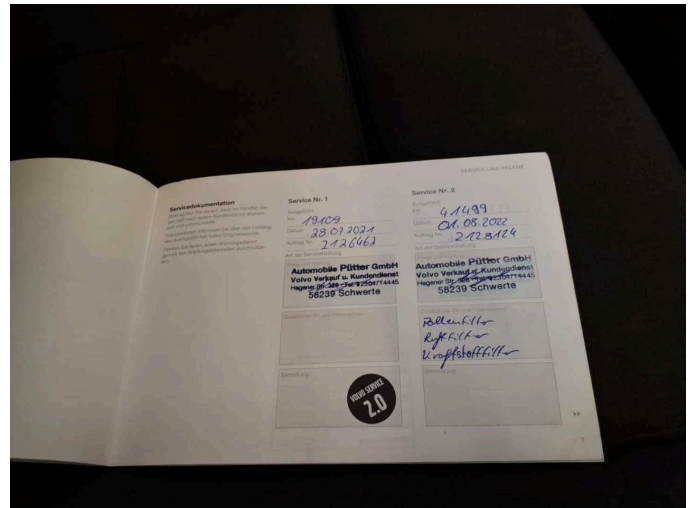


Figure 14: Documents

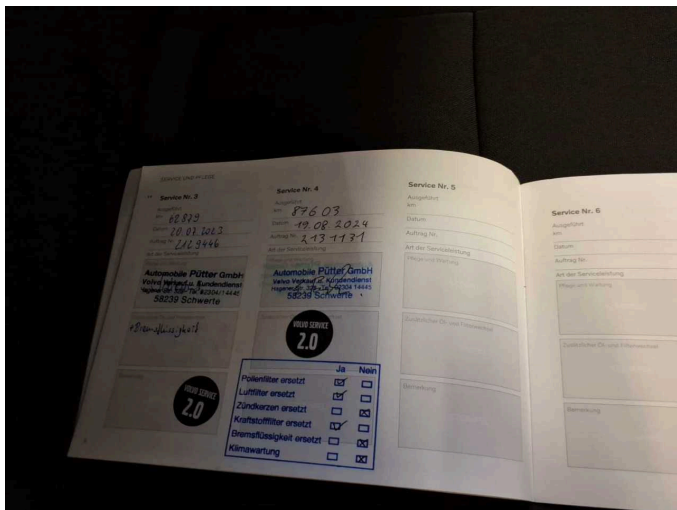


Figure 15: Documents

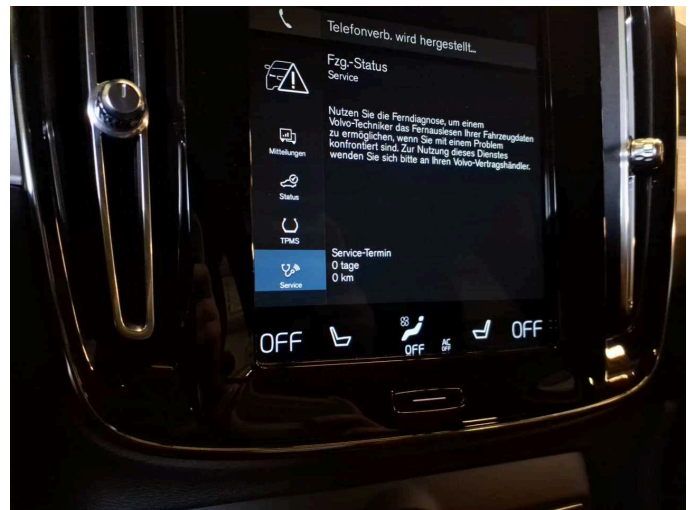


Figure 16: Documents



Figure 17: Navigation



Figure 18: Misc.





Figure 19: Misc.



Figure 20: Misc.



Figure 21: Misc.



Figure 22: Misc.



Figure 23: Misc.



Figure 24: Misc.





Figure 25: Misc.



Figure 26: Misc.

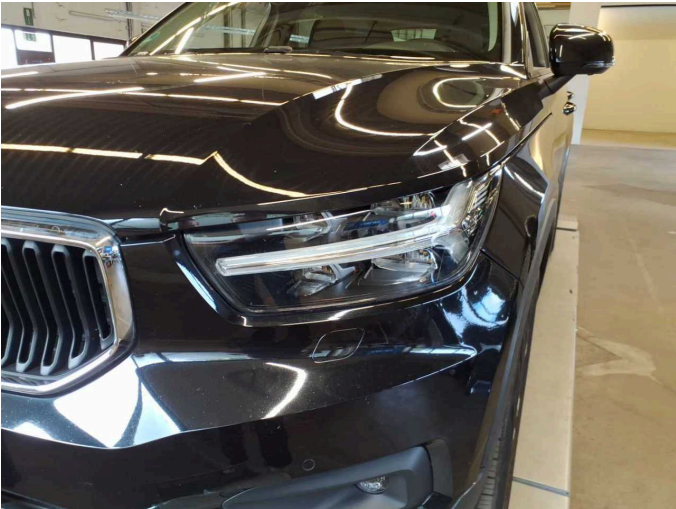


Figure 27: Misc.



Figure 28: Misc.



Figure 29: Misc.



Figure 30: Misc.





**Figure 31:** Misc.



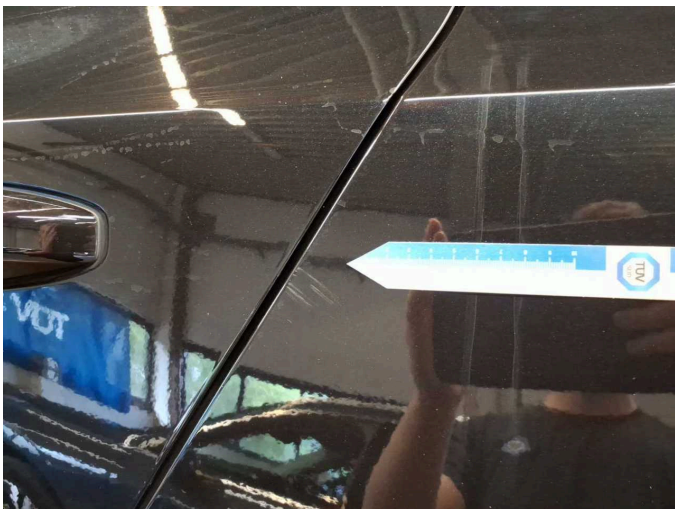
**Damage 1:** Equipment: Tirefit filler - Expired - Replace



**Damage 2:** Interior: Cargo area floor - Soiled - Clean



**Damage 3:** Side panel - rear left side: Side panel - Scratch(es) - Smart repair



**Damage 3:** Side panel - rear left side: Side panel - Scratch(es) - Smart repair



**Damage 4:** Wheel / tyres: Tyre - front right side - Porous / cracked - Replace

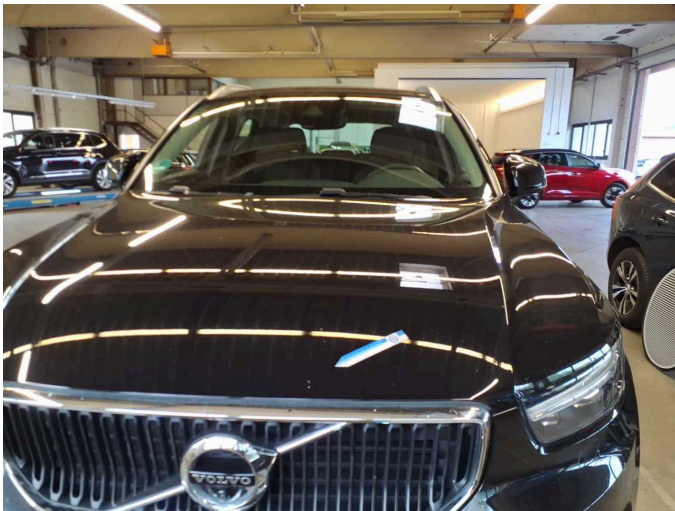




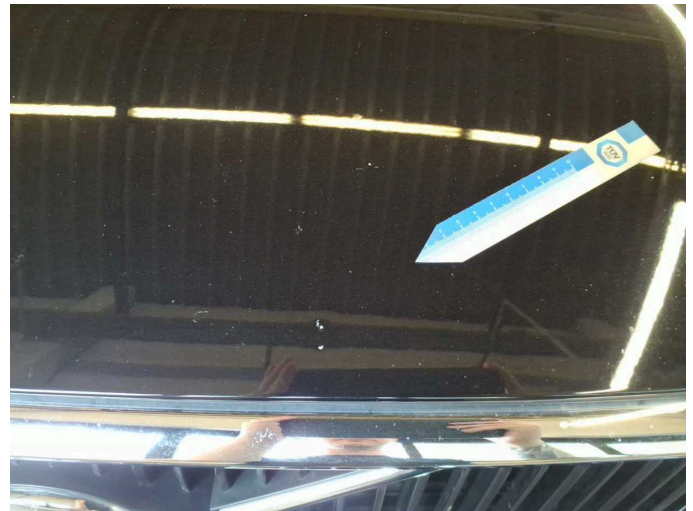
**Damage 4:** Wheel / tyres: Tyre - front right side - Porous / cracked - Replace



**Damage 5:** Misc.: Inspection / maintenance - Due - Perform



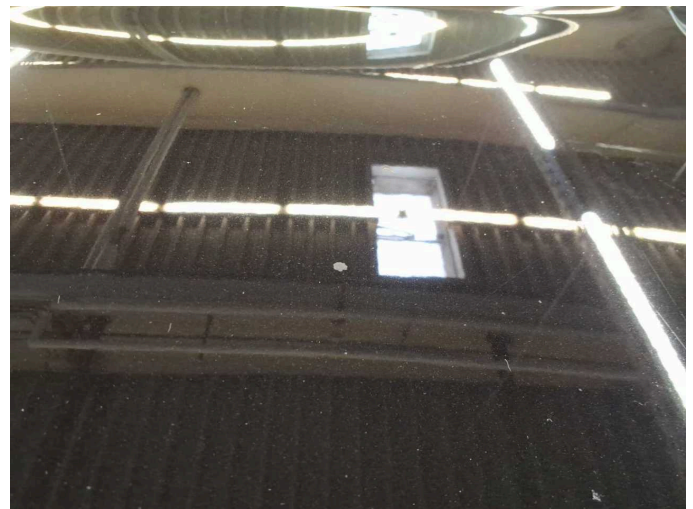
**Damage 6:** Bonnet: Bonnet - Stone chips - Paint



**Damage 6:** Bonnet: Bonnet - Stone chips - Paint

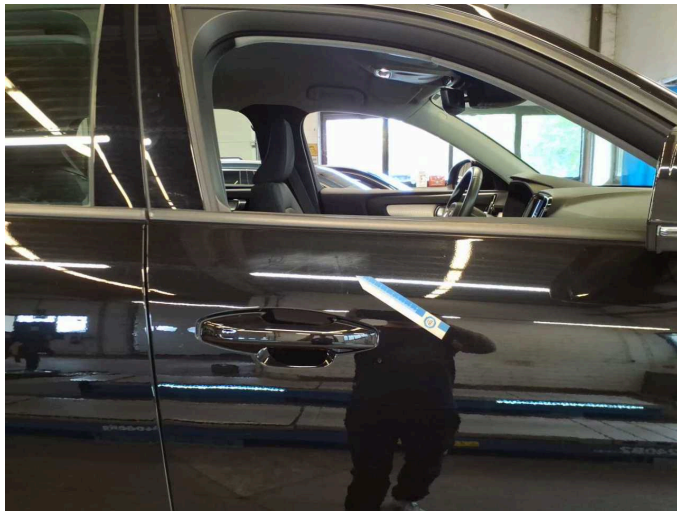


**Damage 6:** Bonnet: Bonnet - Stone chips - Paint



**Damage 6:** Bonnet: Bonnet - Stone chips - Paint





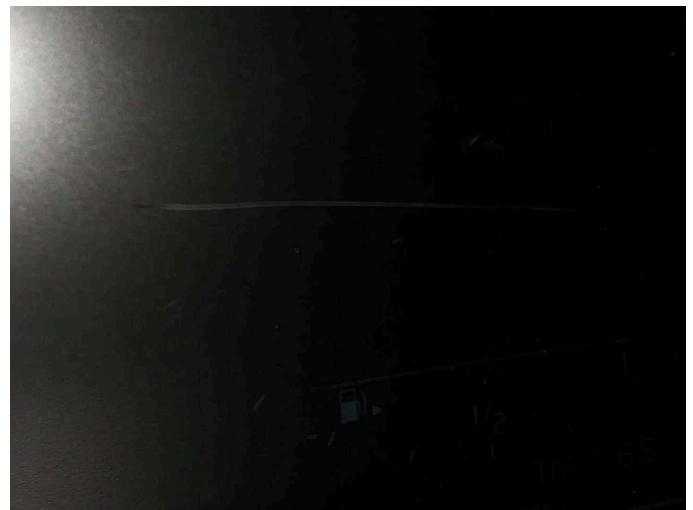
**Damage 7:** Door - front right side: Door - Scratch(es) - Paint



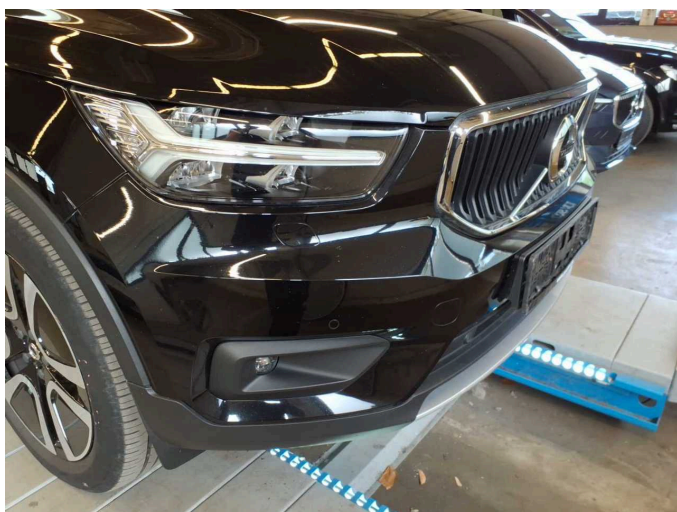
**Damage 7:** Door - front right side: Door - Scratch(es) - Paint



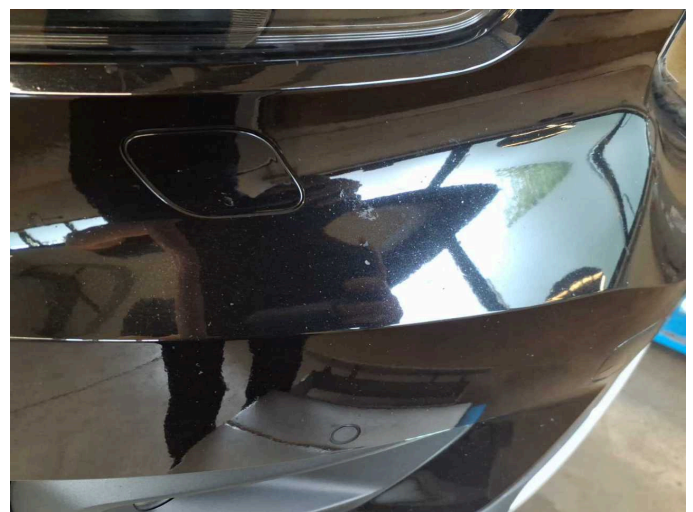
**Damage 8:** Instrument panel: Instrument cluster - Scratch(es) - Replace



**Damage 8:** Instrument panel: Instrument cluster - Scratch(es) - Replace



**Wear and tear 1:** Front bumper: Front bumper - Stone chips - No deduction



**Wear and tear 1:** Front bumper: Front bumper - Stone chips - No deduction



**Wear and tear 1:** Front bumper: Front bumper - Stone chips - No deduction



**Wear and tear 1:** Front bumper: Front bumper - Stone chips - No deduction





# Wartungshistorie

(gemäß Auftraggeber Informationen)

Fahrgestellnummer: YV1XZ72V1M2398979  
Hersteller / Modell: VOLVO VOLVO XC40 D3 Momentum Pro

Datum	KM-Stand	Beschreibung
19.08.2024	87.611	Bremse Sonstiges; Bremsklötze vorne; Bremsscheiben + Klötze v; Bremsscheiben vorne; Kraftstofffilter ern; Luftfiltereinsatz ern; Motoröl b. Wartung; Ölfilter ern; Regelwartungsdienst; Reparatur Sonstiges; Wartung Sonstiges
20.07.2023	62.885	Bremsflüssigkeit; Bremsflüssigkeit ern; HU + AU; Motoröl b. Wartung; Ölfilter ern; Regelwartungsdienst; Reparatur Sonstiges; Systemtest/Eigendiagnose; Wartung Sonstiges
01.08.2022	41.599	Kraftstofffilter ern; Luftfiltereinsatz ern; Motoröl b. Wartung; Regelwartungsdienst
28.07.2021	19.109	VOLVO - Inspektion; Motoröl b. Wartung