



Expertise

Protocol number: 41345595
Order No. / Reference: 25038469
Inspection date: 27 Aug 2025

Manufacturer: Volvo	Model: XC60 B4 D Geartronic Momentum Pro
VIN: YV1UZK5VDN1054610	



Vehicle details	
Manufacturer / Type / Model / Equipment	
Volvo XC60 B4 D Geartronic Momentum Pro	
Vehicle Identification number	YV1UZK5VDN1054610
Mileage (Read)	132,233 km
First registration	23 Jun 2022
Number of holders	1
Power / Engine displacement	145 kw / 1,969 ccm
Fuel type / Cylinder	Hybrid Diesel / E / 4
Gearbox / Number of gears	Automatic / 8
Type of drive	Front drive
Type of vehicle	SUV
Colour / colour code	Black Stone
Doors / Seats	5 / 5
Upholstery type	Cloth
Colour of upholstery	Black-Anthracite



Vehicle details

Maintenance booklet / proof	Available / complete	Next maintenance in	17,963 km
Last maintenance on / at	05/2025 at 120,200 km		
Key is / should be	2 / 2	FZG documents	ZB#2 (B) was available (copy), ZB#1 (S) was not available
		Letter No.	GF851824
Previous damage / Accident	Detectable	Repainting	None detectable
Inspection conditions	sufficient	Lifting equipment / pit	yes
Test drive	Not performed	Engine function test	Performed
Manufacturer key number/ type code number	9101 / BTJ 00009		
Emission standard	EURO6;WLTP;AP;PI/CI; M, N1 I	Fine dust sticker	
Permitted total weight	2,390 kg	Empty weight	

Tyres

Mounted tyres

#	Tyre size	Type of tyre	Manufacturer	Tread depth
1)	235/60 R18 107V	Summer tyres on Light alloy	Continental	5mm / 5mm
2)	235/60 R18 107V	Summer tyres on Light alloy	Goodyear	7mm / 7mm

Additional tyres

#	Tyre size	Type of tyre	Manufacturer	Tread depth
1)	235/60 R18 107V	Winter tyres on Light alloy	Bridgestone	3mm / 3mm
2)	235/60 R18 107V	Winter tyres on Light alloy	Bridgestone	4mm / 4mm

Replacement

Typ	Tyre size	Type of tyre	Manufacturer	Tread depth
	Tirefit	Expiration date 07/2028		

Legend: Tread depth information for tires on the left is in the first place, for tires on the right is in the second place on the axle in the direction of travel

Equipment

Equipment

- Klimaautomatik

Standard equipment

- | | |
|---|--|
| <ul style="list-style-type: none"> • ABS - Anti-lock braking system • Airbag, passenger side can be switched off • Airbag, knee airbag for driver • Android infotainment system • Electrically foldable exterior mirrors • Outside temperature display • Hill Descent Control HDC • Condensation sensor for automatic activation of the defroster function • Brake light, third • CleanZone air quality system with activated carbon filter • Roof rails in black (integrated) • Digital Instrumentation 2nd Gen. • Inlay aluminum inlay Iron Ore • Aluminum door sills with Volvo logo at the front • Electronic differential lock • Electric windows front and rear • Luggage compartment partition net • Transmission: 8-speed Geartronic automatic transmission • Automatic tailgate • IDIS - Intelligent Driver Information System • Interior lighting • Keyless Drive • Child safety lock (rear doors) • Headrests (5) front and rear • Rear headrests foldable • Loading box under the load compartment floor • Load compartment blind • LED headlights "Thor's Hammer" with high beam assistant and integrated LED daytime running lights • Make-up mirrors for driver and passenger, illuminated • Front center armrest with integrated storage compartment and cup holders • Parking brake (electric) • Radio: High Performance Sound audio system • Radio accessories: Two USB-C interfaces on the back of the tunnel console • Run-off Road Protection • Wheels: Tire sealant • Safety Assistance • Power steering, speed-dependent • Seat belts • Seats: Driver and passenger seats height adjustable (electrically) • Start/Stop technology | <ul style="list-style-type: none"> • Driver and passenger side airbags with two-stage deployment system • Airbag, side airbags for driver and front passenger and curtain/shoulder airbags (IC) for all occupants • Left and right exterior mirrors electrically adjustable and heated • Hill Start Assist (HSA) • Indicators (LED) integrated in exterior mirrors • On-board computer • Chrome applications on the side windows • roof edge spoiler • diesel particulate filter • Drive Mode • Rear parking aid with automatic braking intervention (rear) • Electronic Stability Control (ESC) - Electronic Stability Control • Waterfall-design front grille in high-gloss black • Cruise control system • Google Services with navigation function • Rear window, heated • Interior and exterior mirrors automatically dimming • ISOFIX mount for the outer rear seats • Keyless start • Automatic climate control with separate temperature control for driver and front passenger • Paint finish: Uni • Stainless steel loading sill protection in the luggage compartment • Steering wheel adjustable for height and length • Steering wheel: Multifunction buttons on the steering wheel • Rear center armrest (folding) • Fog light • Emergency brake lights • Upholstery: Textile comfort seats • Radio accessories: Digital radio reception (DAB+) • Rain sensor • Tire pressure monitoring system • Wheels: 18" 5-spoke alloy wheels • Rear seats in 40/60 ratio or completely foldable with through-loading function • Safety braking system with disc brakes all around (internally ventilated) • Seats: Lumbar support (2-way adjustable) for driver and passenger seat • Power socket • Phone: Inductive smartphone charging system • Glazing: Color glazing |
|---|--|



- 12 volt socket at the front
- First aid kit and warning triangle
- Lashing eyes in the luggage compartment (foldable)
- Preparation for Trailer Stability Control (TSA)
- WHIPS whiplash protection system

- Volvo On Call
- Immobiliser
- Central locking with two radio remote controls and integrated emergency keys

Extra equipment

- Trailer hitch (semi-electric)
- Package: Lighting package (LED fog lights (integrated in the front spoiler) - headlight cleaning system - full-LED headlights "Thor's Hammer" Active High Beam with extended high beam, dynamic cornering light, intelligent high beam assist with adaptive headlight range control and integrated LED daytime running lights - ambient lighting, extended ambient lighting (multi-colored) f/r, luggage compartment lid, exit lights f/r, illuminated door compartment opener f/r, illuminated cup holders f, footwell lighting h, reading lights h.)
- Auxiliary heater with timer (fuel-powered)
- Glazing: Side and rear windows tinted (from B-pillar)
- Driver Assistance (Adaptive Cruise Control - Emergency Stop Assist (automatic emergency stop system if warnings are ignored due to the driver failing to steer, brake, or accelerate, including activation of the hazard warning lights and automatic braking to a standstill and emergency call via Volvo On Call) - Pilot Assist (lane guidance assistant up to speeds of 130 km/h))
- Package: Winter package (heated front seats - heated steering wheel)
- Parking camera with 360° surround view in conjunction with parking assistance package (incl. front, side and rear parking sensors with automatic braking intervention (rear))

Brief expert findings

Documents submitted	At the time of the inspection, the registration certificate Part 2 (letter) was available, but the registration certificate Part 1 (certificate) was not. (Copy)
VIN comparison	The vehicle identification number (VIN) was read from the vehicle and its conformity with the submitted documents was verified during the inspection by the undersigned.
Inspection	The inspection conditions were sufficient for the assessment of the vehicle. Lifting equipment and a pit were available for examining the vehicle.
Test drive	No test drive/maneuvering was carried out during the inspection of the vehicle.
Engine function test	An engine test run was performed.

Value reducing factors

No.	Component group	Description
1	Misc.	Main inspection - No evidence - No deduction
2	Sill - left side	Sill - Scratch(es) - Smart repair
3	Door - front left side	Door edge - Scratch(es) - Smart repair
4	Trim / covers	Door trim - rear right side (Griff) - Broken / torn - Smart repair
5	Rear bumper	Rear bumper (Leicht verformt) - Scratch(es) - Repair and paint

Wear and tear

No.	Component group	Description
1	Front bumper	Front bumper - Stone chips - No deduction
2	Door - rear left side	Door edge - Scratch(es) - Smart repair

The vehicle shows signs of wear commensurate with its age and use.

Accident damages

No.	Accident
1	Side right



Order/Scope of order

The order was placed to prepare a sales report for the vehicle described. This includes the following:

- Description of core relevant information about the vehicle
- Documentation of equipment features
(*Delivery by third-party service providers*)
- Documentation of damage, defects, missing parts
- Documentation of previous damage, unrepaired previous damage, repainting
- a brief visual or functional inspection of the equipment details if possible.
(*Functional tests of driver assistance systems are not included in the scope of services!*)
- a photo documentation of the vehicle

Basis for the order

This product is based on the Alphabet Fuhrpark GmbH guidelines for vehicle returns and valuations. The expert makes the explicit findings in each individual case objectively within the framework of the specified standards based on his or her own expertise.

The vehicle inspection takes place in a disassembled state.

Damage or defects that can only be detected during disassembly/diagnosis work or through advanced knowledge remain within the scope of the prognosis risk. An extended risk exists for concealed defects caused by fraudulent deception and not identifiable by the expert.

Damage or defects resulting from normal use or wear and tear of the vehicle will be accepted according to the applicable standard.

There was no explicit identification or monetary consideration of the expected features within the product.

Features which in their nature and severity slightly exceed normal use but do not constitute unacceptable damage will be documented and identified under signs of use if necessary.

Damage or defects which, according to the underlying standard, can no longer be attributed to normal use or wear and tear are listed in the product under "Depreciating Factors".

Depending on the product specification, a monetary ID can be provided. If this takes place, the costs can be 100% d or pro rata depending on the vehicle's age and mileage.

Previous damages

Non-repaired previous damages were found at the vehicle. The necessary repair costs are listed in the expert report or if necessary, are listed in detail in a separately enclosed repair cost calculation.

Comments

Der beiliegende Winterradsatz ist nicht Bestandteil der vorliegenden Fahrzeugausstattung.



Figure 1: Diagonal front (left)



Figure 2: Diagonal front (right)



Figure 3: Diagonal rear (left)



Figure 4: Diagonal rear (right)



Figure 5: Interior - front



Figure 6: Interior - rear



Figure 7: Instrument cluster



Figure 8: Instrument panel



Figure 9: interior 360° view ([Online link](#))



Figure 10: Cargo area



Figure 11: VIN



Figure 12: Mounted tyres



Figure 13: Documents

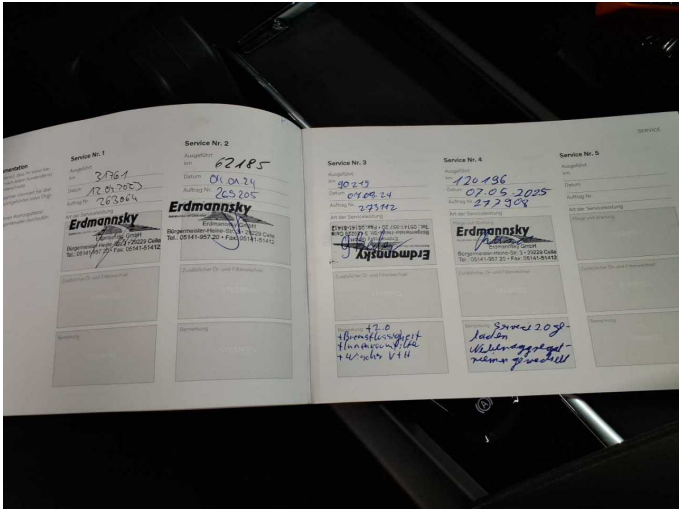


Figure 14: Documents



Figure 15: Additional tyres



Figure 16: Navigation



Figure 17: Misc.



Figure 18: Misc.

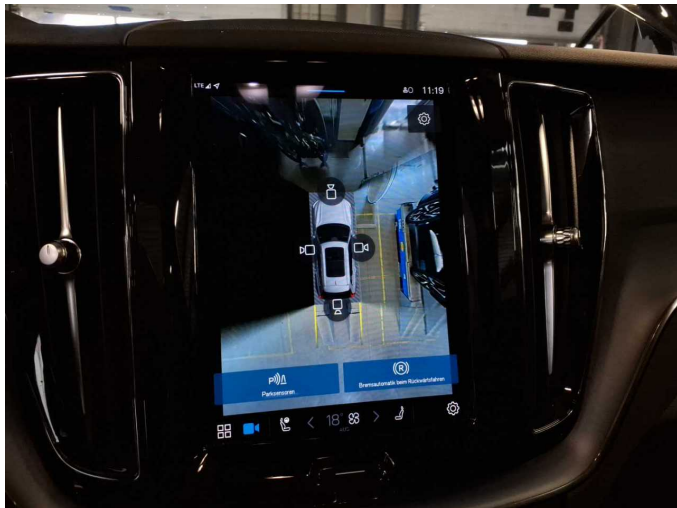


Figure 19: Misc.



Figure 20: Misc.



Figure 21: Misc.



Figure 22: Misc.



Figure 23: Misc.



Figure 24: Misc.



Figure 25: Misc.



Figure 26: Misc.



Figure 27: Misc.



Figure 28: Misc.

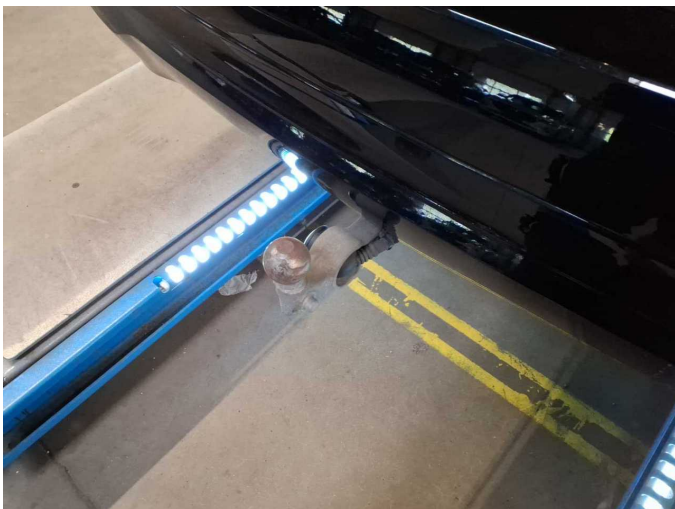


Figure 29: Misc.

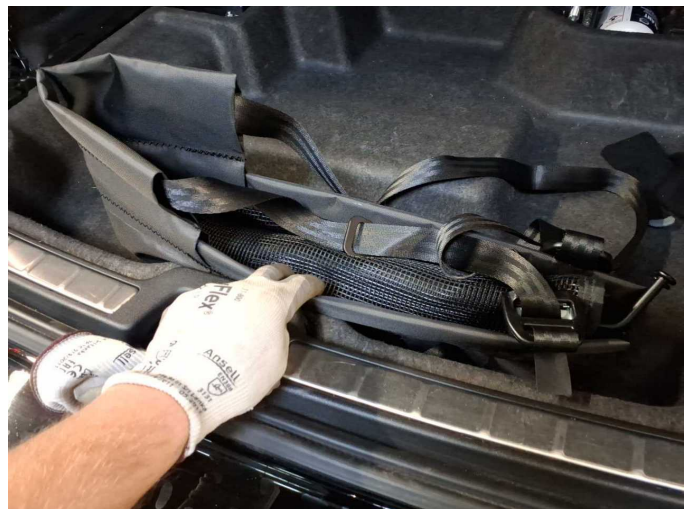


Figure 30: Misc.



Figure 31: Misc.



Figure 32: Misc.



Figure 33: Misc.



Damage 2: Sill - left side: Sill - Scratch(es) - Smart repair



Damage 2: Sill - left side: Sill - Scratch(es) - Smart repair



Damage 3: Door - front left side: Door edge - Scratch(es) - Smart repair



Damage 3: Door - front left side: Door edge - Scratch(es) - Smart repair



Damage 4: Trim / covers: Door trim - rear right side (Griff) - Broken / torn - Smart repair



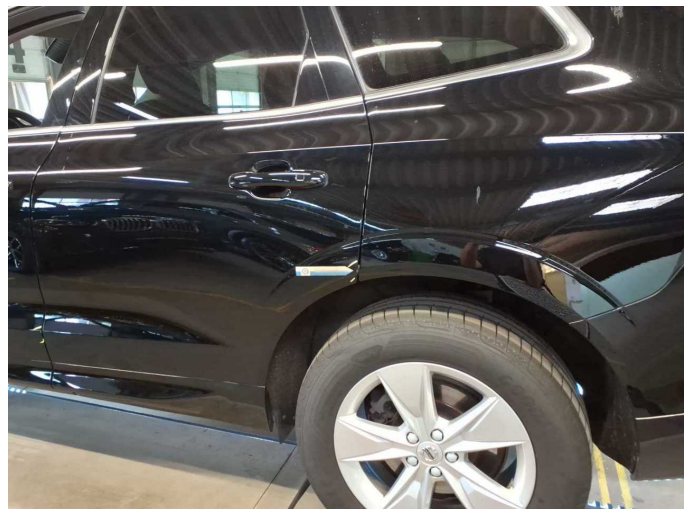
Damage 4: Trim / covers: Door trim - rear right side (Griff) - Broken / torn - Smart repair



Damage 5: Rear bumper: Rear bumper (Leicht verformt) - Scratch(es) - Repair and paint



Damage 5: Rear bumper: Rear bumper (Leicht verformt) - Scratch(es) - Repair and paint



Wear and tear 2: Door - rear left side: Door edge - Scratch(es) - Smart repair



Wear and tear 2: Door - rear left side: Door edge - Scratch(es) - Smart repair



Accident 1: Side right



Accident 1: Side right



Accident 1: Side right



Accident 1: Side right



Accident 1: Side right



Wartungshistorie

(gemäß Auftraggeber Informationen)

Fahrgestellnummer: YV1UZZK5VDN1054610

Hersteller / Modell: VOLVO VOLVO XC60 B4 D Geartronic Momentum Pro

Datum	KM-Stand	Beschreibung
08.05.2025	120.200	Getriebeöl ern/prüfen; Keilrippenriemen; Kraftstofffilter ern; Luftfiltereinsatz ern; Motoröl b. Wartung; Ölfilter ern; Regelwartungsdienst; Reparatur Sonstiges; Wartung Sonstiges
04.01.2024	62.186	Kraftstofffilter ern; Luftfiltereinsatz ern; Motoröl b. Wartung; Regelwartungsdienst
12.04.2023	31.766	Motoröl b. Wartung; Ölfilter ern; Regelwartungsdienst; Reparatur Sonstiges; Wartung Sonstiges