



Expertise

Protocol number: 41185973  
Order No. / Reference: 25114439  
Inspection date: 20 Aug 2025

Manufacturer: Volvo	Model: XC60 B4 D AWD Geartronic Momentum Pro
VIN: YV1UZK5VCM1860627	



Vehicle details	
Manufacturer / Type / Model / Equipment	
Volvo XC60 B4 D AWD Geartronic Momentum Pro	
Vehicle Identification number	YV1UZK5VCM1860627
Mileage (Read)	156,406 km
First registration	21 Jun 2021
Number of holders	1
Next periodical technical inspection	06/2026
(Report on hand)	
Power / Engine displacement	145 kw / 1,969 ccm
Fuel type / Cylinder	Hybrid Diesel / E / 4
Gearbox / Number of gears	Automatic / 8
Type of drive	All-wheel drive
Type of vehicle	SUV
Colour / colour code	Black Stone
Doors / Seats	5 / 5
Upholstery type	Leather
Colour of upholstery	Anthracite-Black
Vehicle with smoke odor	no



## Vehicle details

<b>Maintenance booklet / proof</b>	digital proof / complete	<b>Next maintenance in</b>	327 Tag(e)
<b>Last maintenance on / at</b>	07/2025 at 153,740 km		
<b>Key is / should be</b>	2 / 2	<b>FZG documents</b>	ZB#2 (B) was available (copy), ZB#1 (S) was not available
		<b>Letter No.</b>	GA558792
<b>Previous damage / Accident</b>	Detectable	<b>Repainting</b>	None detectable
<b>Inspection conditions</b>	sufficient	<b>Lifting equipment / pit</b>	yes
<b>Test drive</b>	short drive on the company premises	<b>Engine function test</b>	Performed
<b>Manufacturer key number/ type code number</b>	9101 / BPQ 00020		
<b>Emission standard</b>	EURO6;WLTP;AP;PI/CI; M, N1 I	<b>Fine dust sticker</b>	
<b>Permitted total weight</b>	2,520 kg	<b>Empty weight</b>	

## Tyres

### Mounted tyres

#	Tyre size	Type of tyre	Manufacturer	Tread depth
1)	235/60 R18 107V	Summer tyres on Light alloy	Continental	6mm / 6mm
2)	235/60 R18 107V	Summer tyres on Light alloy	Continental	6mm / 6mm

### Additional tyres

#	Tyre size	Type of tyre	Manufacturer	Tread depth
1)	235/60 R18 107H	Winter tyres on Light alloy	Pirelli	6mm / 6mm
2)	235/60 R18 107H	Winter tyres on Light alloy	Pirelli	6mm / 6mm

### Replacement

Typ	Tyre size	Type of tyre	Manufacturer	Tread depth
	Tirefit	Expiration date 05/2025		

**Legend:** Tread depth information for tires on the left is in the first place, for tires on the right is in the second place on the axle in the direction of travel

## Equipment

### Standard equipment

- ABS - Anti-lock braking system (with EBD)
- Airbag, passenger side can be switched off
- Airbag, knee airbag for driver
- All-wheel drive (AWD) (via electronically controlled multi-plate clutch (5th generation) with Instant Traction)
- Electrically foldable exterior mirrors
- Outside temperature display
- Hill Descent Control HDC
- Condensation sensor for automatic activation of the defroster function
- Brake light, third
- City Safety (automatic emergency braking system with detection of vehicles, cyclists, pedestrians, and large animals, including intersection braking assistant, emergency braking assistant for oncoming traffic, and steering assistance for evasive maneuvers)
- roof edge spoiler
- diesel particulate filter
- Drive Mode (driving mode settings for engine, transmission, steering, brakes and chassis: Comfort, Eco, Dynamic, Off Road, Individual)
- Inlay aluminum inlay Iron Ore
- Aluminum door sills with Volvo logo at the front
- ESC - driving dynamics control
- Waterfall-design front grille in high-gloss black
- Luggage compartment partition net
- Transmission: 8-speed Geartronic automatic transmission
- Rear window, heated
- Interior and exterior mirrors automatically dimming
- Interior lighting (headlining, front reading lights, front ambient lighting, front footwell, storage compartment behind center console, glove compartment and luggage compartment)
- Keyless Start (electronic engine start system)
- Child safety lock (rear doors)
- Headrests (5) front and rear
- Rear headrests foldable (electrically)
- Paint finish: Uni
- Loading box under the load compartment floor
- Stainless steel loading sill protection in the luggage compartment
- Lane Keeping Aid (LKA) (Active Lane Keeping Assistant)
- LED headlights "Thor's Hammer" with high beam assistant and integrated LED daytime running lights
- Leather gearshift lever
- Steering wheel: 3-spoke leather steering wheel (anthracite) (multifunction buttons on the steering wheel in black)
- Driver and passenger side airbags with two-stage deployment system
- Airbag, side airbags for driver and front passenger and curtain/shoulder airbags (IC) for all occupants
- Exhaust system with two chrome-plated tailpipes
- Left and right exterior mirrors electrically adjustable and heated (driver and passenger side with wide-angle optics)
- Hill Start Assist (HSA)
- Indicators (LED) integrated in exterior mirrors
- On-board computer (with vehicle control functions)
- Chrome applications on the side windows
- CleanZone air quality system with activated carbon filter (automatic air recirculation and pre-ventilation of the interior when the vehicle is unlocked)
- Connected Safety (cloud-based warning of slippery road conditions and vehicles with hazard lights activated)
- Aluminum roof rails (integrated)
- Digital instrumentation (12.3" full-graphic display (31.2 cm diagonal) with two variable circular instruments and information display (e.g. for navigation map view))
- Driver Alert (attention warning)
- Parking aid, rear
- Electronic differential lock Corner Traction Control (CTC)
- Electric windows front and rear (with auto-down and auto-up function)
- Cruise control (and speed limit (variable))
- Automatic tailgate (electric)
- IDIS - Intelligent Driver Information System (delays incoming calls or vehicle information in impending dangerous situations)
- ISOFIX mount for the outer rear seats
- Keyless Drive (electronic access system) with sensor-controlled tailgate, waterproof micro key and illuminated door handles and floor lights)
- Automatic climate control with separate temperature control for driver and front passenger (and additional ventilation nozzles for the 2nd row of seats (integrated in the B-pillar) including pre-ventilation and reheating of the interior when the engine is switched off via the Volvo On Call smartphone app or menu)
- Load compartment blind
- LED fog lights (integrated in the front spoiler - only when selecting the option "Full LED headlights - Thor's Hammer" including cornering light)
- Steering wheel adjustable for height and length
- Make-up mirrors for driver and passenger, illuminated
- Rear center armrest (folding) (with cup holders)



- Sensus navigation system (3D navigation - destination input via natural voice control - dynamic route guidance with real-time traffic information - local search (local search by keyword with information, reviews, and photos) - Volvo Lifetime MapCare)
- Parking brake (electric)
- Upholstery: textile
- Radio: Sensus Connect infotainment system with High Performance Sound (22.9 cm touchscreen (9" diagonal) - 330 watts of power - 10 speakers - 2 USB ports (compatible with Apple iPod/iPhone/iPad) - Bluetooth hands-free system including audio streaming - Internet access including internet radio and apps (via paired smartphone) - Voice control - Digital vehicle operating manual - Connected Service Booking)
- Tire pressure monitoring system (with tire-specific pressure loss notification)
- Road Sign Information (RSI) - Traffic Sign Recognition
- Run-off Road Protection (preventive protection system in the event of unintentional road departure or imminent rollover, including pre-activation of the seat belt tensioners, battery deactivation (plug-in hybrid only), emergency call via Volvo On Call, and door unlocking)
- Power steering, speed-dependent
- Safety braking system with disc brakes all around (internally ventilated) (automatic brake system preload, brake assist and automatic hold function)
- Seats: Driver and passenger seats height adjustable (electric) (including manual tilt adjustment)
- Seats: Lumbar support (2-way adjustable) for driver and passenger seat
- 12 volt socket at the front
- First aid kit and warning triangle
- Lashing eyes in the luggage compartment (foldable)
- Preparation for Trailer Stability Control (TSA)
- Immobiliser
- WHIPS whiplash protection system (including dive-through protection on all seats and energy-absorbing seat padding in the front)
- Central locking with two remote controls and integrated emergency keys (automatic locking of the doors while driving (can be deactivated) - convenient opening/closing of the side windows and, if applicable, sunroof via remote control - panic function integrated in the remote control)

#### Extra equipment

- Trailer hitch (semi-electric)
- Head-up display: Graphic display of driving information in the windscreen

- Front center armrest with integrated storage compartment and cup holders
- Emergency brake lights (brake lights flash quickly during heavy deceleration; hazard warning lights automatically activate at speeds below 10 km/h)
- Oncoming Lane Mitigation (preventive protection system when crossing the center line and approaching oncoming traffic, including steering intervention towards the own lane)
- Radio accessories: Digital radio reception (DAB+)
- Radio accessories: Smartphone integration Apple CarPlay and Android Auto (integration of Apple iPhone and Android smartphones into the Sensus operating system)
- Radio accessories: Two USB-C interfaces on the back of the tunnel console
- Rain sensor
- Road Edge Detection (system to protect against unintentional lane departure due to steering and braking interventions)
- Wheels: 18" 5-Y-spoke alloy wheels (235/60 R18 tires with 7.5 Jx 18" rims)
- Wheels: Tire sealant (Incl. 12-volt compressor, top speed 80 km/h)
- Rear seats in 40/60 ratio or completely foldable with through-loading function
- Seat belts (active seat belts with belt tensioners, pre-activation of the belt tensioners only in conjunction with IntelliSafe Surround - belt height adjustment at the front - warning tone/display when seat belts are not fastened (for all seats))
- Start/Stop technology
- Power socket (12 volt connection in the luggage compartment)
- Glazing: Color glazing
- Volvo On Call with Wi-Fi hotspot (including integrated modem, external antenna, and Wi-Fi hotspot for mobile devices). Volvo On Call includes: automatic emergency call function with transmission of vehicle position and data, as well as alerting the Volvo On Call Service Center at the touch of a button (10-year usage period). Additionally, various convenience services are available via the smartphone app (3-year usage period and extendable upon request; including extension of the emergency call function).

- Chassis: Sports chassis (tighter chassis tuning - chassis height unchanged)



- Package: Lighting Package (Headlight cleaning system - Full LED headlights "Thor's Hammer" Active High Beam with extended high beam, dynamic cornering light, intelligent high beam assist with adaptive headlight range control and integrated LED daytime running lights - Ambient lighting Extended ambient lighting (multi-colored) f/r Luggage compartment lid Exit lights f/r Illuminated door compartment openers f/r Illuminated cup holders f/r Footwell lighting h Reading lights h.)
- Package: Parking assistance package (front and rear parking sensors - rear view camera)
- Package: Xenium package (front and rear parking sensors - rear view camera - Sensus Connect infotainment system with HIGH PERFORMANCE SOUND PRO by Harman Kardon 9" touchscreen 600 watts 14 speakers Fresh Air subwoofer Dirac Unison sound optimization 2 USB ports (compatible with iPod, iPhone, iPad) Bluetooth hands-free system including audio streaming Internet access including internet radio and apps (via paired smartphone) Voice control Digital vehicle operating instructions Connected Service Booking)
- Glazing: Side and rear windows tinted (from B-pillar)
- Package: IntelliSafe Pro Package (Pilot Assist: Adaptive Cruise Control with Distance Warning and Lane Keeping Assist up to speeds of 130 km/h - IntelliSafe Surround: Blind Spot Information System (BLIS) Blind Spot Assist including lane change warning for rapidly approaching vehicles including steering intervention Cross Traffic Alert with braking intervention - Cross traffic warning for vehicles, cyclists, and pedestrians when reversing out of a parking space including braking and rear impact mitigation)
- Package: Winter Package Pro (heated front seats - heated wiper blades and windshield washer nozzles - auxiliary heating with timer (fuel-powered) remote activation via Volvo On Call app - heated rear seats (outer seats of the 2nd row) - heated steering wheel)
- Park Assist Pilot
- Upholstery: Leather comfort seats (including storage compartment in the rear center armrest)
- Rear view camera
- Seats: Leg rest adjustable (electrically) for driver and passenger seat
- Seats: Lumbar support (4-way electrically adjustable) for driver and front passenger seat

## Brief expert findings

Documents submitted	At the time of the inspection, the registration certificate Part 2 (letter) was available, but the registration certificate Part 1 (certificate) was not. (Copy)
VIN comparison	The vehicle identification number (VIN) was read from the vehicle and its conformity with the submitted documents was verified during the inspection by the undersigned.
Inspection	The inspection conditions were sufficient for the assessment of the vehicle. Lifting equipment and a pit were available for examining the vehicle.
Test drive	A short maneuvering and shunting trip was carried out on the company premises.
Engine function test	An engine test run was performed.

## Value reducing factors

No.	Component group	Description
1	Equipment	Tirefit filler - Expired - Replace
2	Door - rear right side	Door - dent(s) - Smart repair
3	Side panel - rear right side	Sill - Scratch(es) - Smart repair
4	Door - front right side	Door - Scratch(es) - Loss in value
5	Door - rear left side	Door - Scratch(es) - Loss in value
6	Wheel / tyres	Alloy rim - front right side (Materialabtrag) - Scratched - Replace
7	Rear bumper	Rear bumper - Scratch(es) - Paint

## Wear and tear

No.	Component group	Description
1	Bonnet	Bonnet - Stone chips - No deduction
2	Body	Body (Waschanlagen Spuren) - Scratched - No deduction
3	Vehicle glazing	Rear window - Scratch(es) - No deduction
4	Vehicle glazing	Windscreen - Stone chips - No deduction



No.	Component group	Description
5	Side panel - rear left side	Side panel - Scratch(es) - No deduction

The vehicle shows signs of wear commensurate with its age and use.

## Accident damages

### No. Accident

1 Front

## Order/Scope of order

The order was placed to prepare a sales report for the vehicle described. This includes the following:

- Description of core relevant information about the vehicle
- Documentation of equipment features  
(*Delivery by third-party service providers*)
- Documentation of damage, defects, missing parts
- Documentation of previous damage, unrepaired previous damage, repainting
- a brief visual or functional inspection of the equipment details if possible.  
(*Functional tests of driver assistance systems are not included in the scope of services!*)
- a photo documentation of the vehicle

## Basis for the order

This product is based on the Alphabet Fuhrpark GmbH guidelines for vehicle returns and valuations. The expert makes the explicit findings in each individual case objectively within the framework of the specified standards based on his or her own expertise.

The vehicle inspection takes place in a disassembled state.

Damage or defects that can only be detected during disassembly/diagnosis work or through advanced knowledge remain within the scope of the prognosis risk. An extended risk exists for concealed defects caused by fraudulent deception and not identifiable by the expert.

Damage or defects resulting from normal use or wear and tear of the vehicle will be accepted according to the applicable standard.

There was no explicit identification or monetary consideration of the expected features within the product.

Features which in their nature and severity slightly exceed normal use but do not constitute unacceptable damage will be documented and identified under signs of use if necessary.

Damage or defects which, according to the underlying standard, can no longer be attributed to normal use or wear and tear are listed in the product under "Depreciating Factors".

Depending on the product specification, a monetary ID can be provided. If this takes place, the costs can be 100% d or pro rata depending on the vehicle's age and mileage.

## Previous damages

Non-repaired previous damages were found at the vehicle. The necessary repair costs are listed in the expert report or if necessary, are listed in detail in a separately enclosed repair cost calculation.

## Comments

- Winterradsatz ist kein Bestandteil des Auslieferumfangs

- Die beigefügte Reparaturkostenkalkulation wurde nach bestem Wissen und Gewissen unter eingeschränkten Besichtigungsbedingung im demontagefreien Zustand erstellt. Es können aufgrund verdeckter Beschädigung erhebliche Mehrkosten und somit Abweichung der für den Unfall ausgewiesenen Reparaturkosten nicht ausgeschlossen werden





Figure 1: Diagonal front (left)



Figure 2: Diagonal front (right)



Figure 3: Diagonal rear (left)



Figure 4: Diagonal rear (right)



Figure 5: Interior - front



Figure 6: Interior - rear





Figure 7: Instrument cluster



Figure 8: Instrument panel



Figure 9: interior 360° view



Figure 10: Cargo area

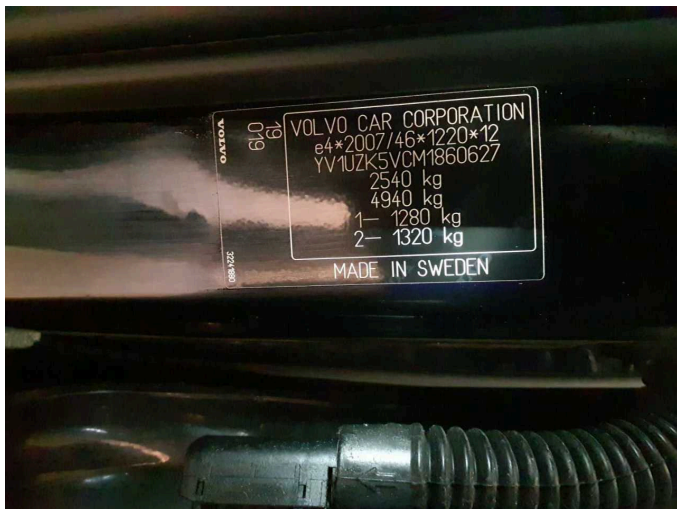


Figure 11: VIN



Figure 12: Mounted tyres



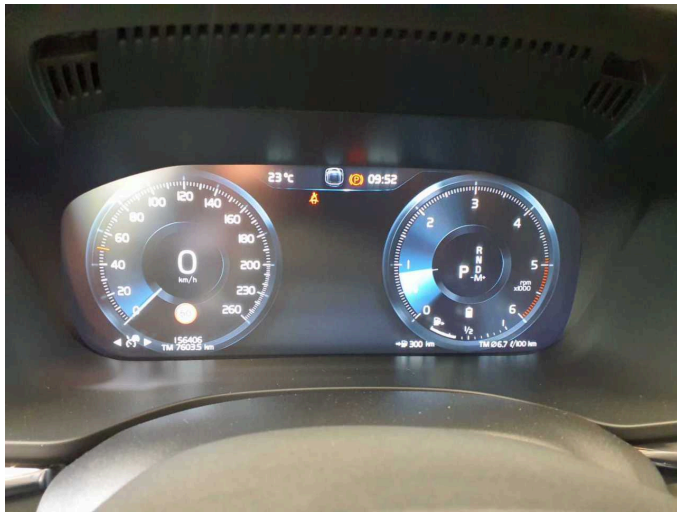


Figure 13: Documents



Figure 14: Documents



Figure 15: Documents



Figure 16: Documents



Figure 17: Additional tyres

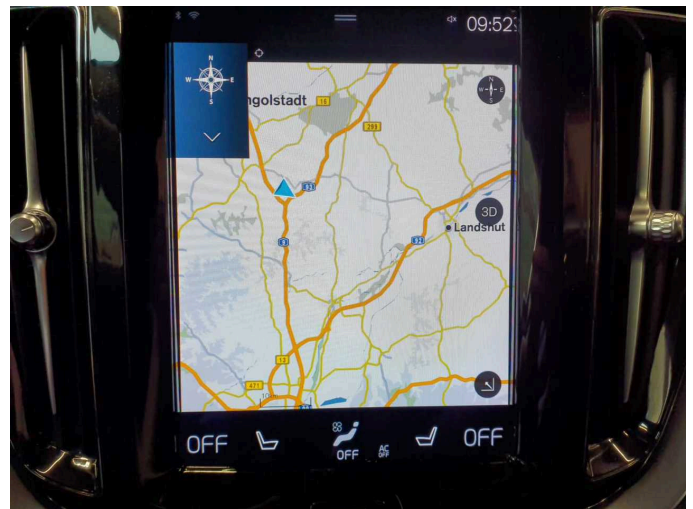


Figure 18: Navigation





Figure 19: Misc.



Figure 20: Misc.



Figure 21: Misc.



Figure 22: Misc.



Figure 23: Misc.

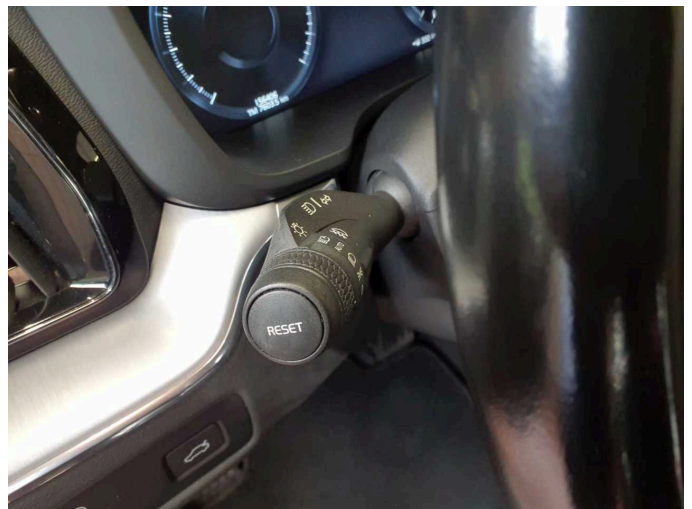


Figure 24: Misc.





Figure 25: Misc.



Figure 26: Misc.



Figure 27: Misc.



Figure 28: Misc.

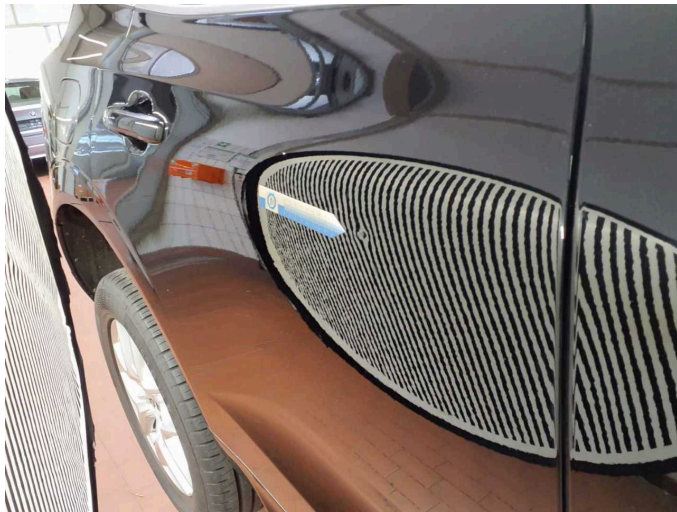


Figure 29: Misc.



Damage 1: Equipment: Tirefit filler - Expired - Replace





**Damage 2:** Door - rear right side: Door - dent(s) - Smart repair



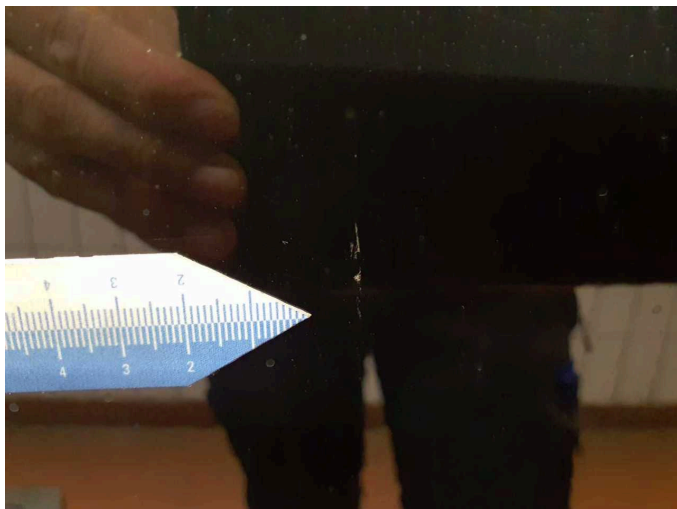
**Damage 2:** Door - rear right side: Door - dent(s) - Smart repair



**Damage 3:** Side panel - rear right side: Sill - Scratch(es) - Smart repair



**Damage 3:** Side panel - rear right side: Sill - Scratch(es) - Smart repair

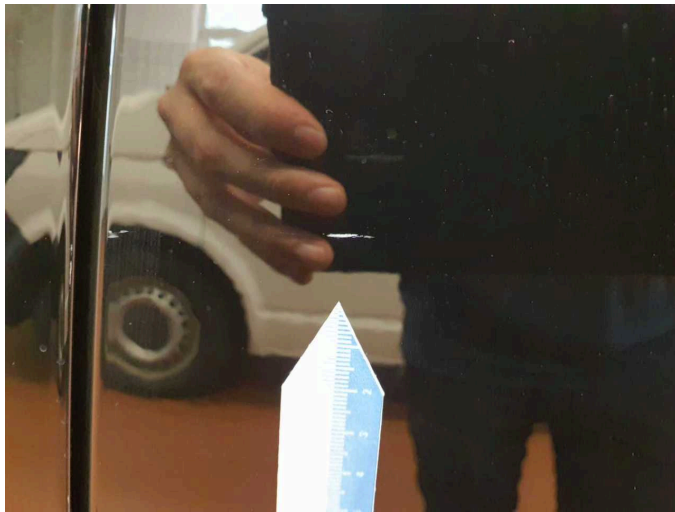


**Damage 4:** Door - front right side: Door - Scratch(es) - Loss in value



**Damage 4:** Door - front right side: Door - Scratch(es) - Loss in value





**Damage 5:** Door - rear left side: Door - Scratch(es) - Loss in value



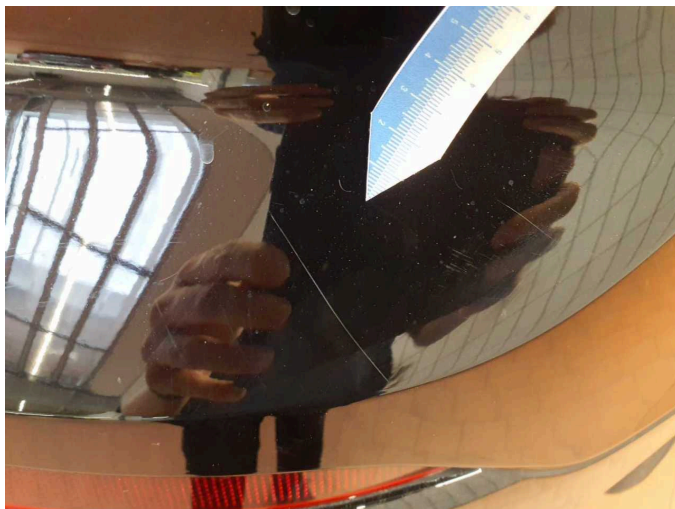
**Damage 5:** Door - rear left side: Door - Scratch(es) - Loss in value



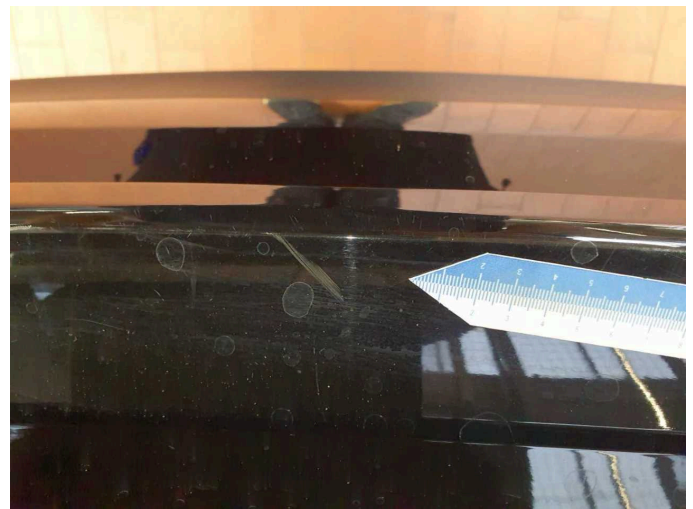
**Damage 6:** Wheel / tyres: Alloy rim - front right side (Materialabtrag) - Scratched - Replace



**Damage 6:** Wheel / tyres: Alloy rim - front right side (Materialabtrag) - Scratched - Replace

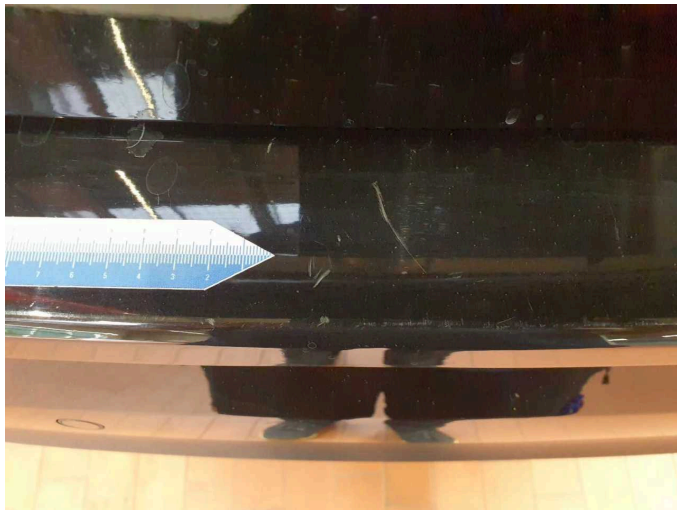


**Damage 7:** Rear bumper: Rear bumper - Scratch(es) - Paint



**Damage 7:** Rear bumper: Rear bumper - Scratch(es) - Paint





**Damage 7:** Rear bumper: Rear bumper - Scratch(es) - Paint



**Damage 7:** Rear bumper: Rear bumper - Scratch(es) - Paint



**Wear and tear 5:** Side panel - rear left side: Side panel - Scratch(es) - No deduction



**Wear and tear 5:** Side panel - rear left side: Side panel - Scratch(es) - No deduction

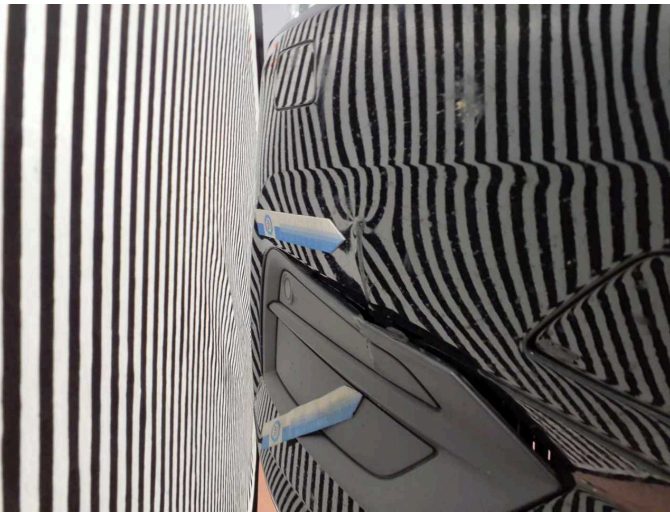


**Accident 1:** Front



**Accident 1:** Front

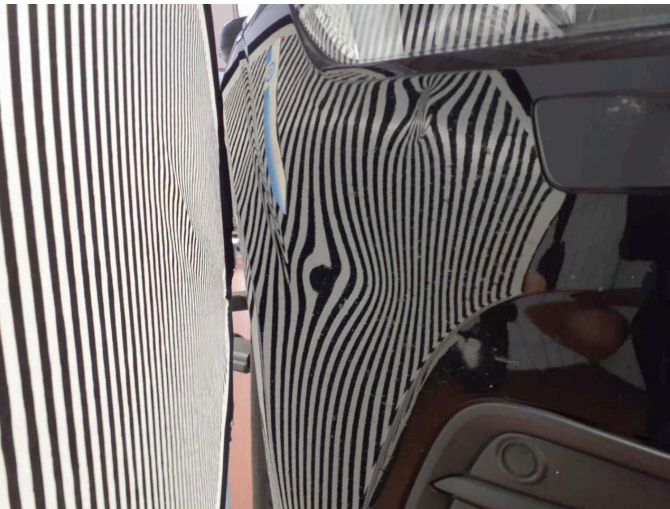




**Accident 1: Front**



**Accident 1: Front**



**Accident 1: Front**



**Accident 1: Front**



# Wartungshistorie

(gemäß Auftraggeber Informationen)

Fahrgestellnummer: YV1UZZK5VCM1860627

Hersteller / Modell: VOLVO VOLVO XC60 B4 D AWD Geartronic Momentum Pro

Datum	KM-Stand	Beschreibung
17.07.2025	153.740	Bremse Sonstiges; Bremsklötze vorne; Bremsscheiben + Klötze v; Bremsscheiben vorne; Motoröl b. Wartung; Ölfilter ern; Regelwartungsdienst; Wartung Sonstiges
14.01.2025	127.149	Systemtest/Eigendiagnose
29.11.2024	120.181	Keilriemen ern; Keilrippenriemen; Kraftstofffilter ern; Luftfiltereinsatz ern; Motoröl b. Wartung; Ölfilter ern; Regelwartungsdienst; Reparatur Sonstiges; Systemtest/Eigendiagnose; Wartung Sonstiges
18.07.2024	89.832	AU
18.01.2024	89.832	Bremsklötze hinten; Motoröl b. Wartung; Ölfilter ern; Regelwartungsdienst; Wartung Sonstiges
05.01.2024	88.650	Keilrippenriemen
14.03.2023	60.229	Kraftstofffilter ern; Luftfiltereinsatz ern; Motoröl b. Wartung; Ölfilter ern; Regelwartungsdienst; Wartung Sonstiges
20.06.2022	29.478	Motoröl b. Wartung; Ölfilter ern; Regelwartungsdienst; Wartung Sonstiges