



Expertise

Protocol number: 41500688
Order No. / Reference: 25159131
Inspection date: 11 Sept 2025

Manufacturer: Volvo	Model: XC60 B4 D AWD Plus Dark
VIN: YV1UZK5V2P1289386	



Vehicle details	
Manufacturer / Type / Model / Equipment	
Volvo XC60 B4 D AWD Plus Dark	
Vehicle Identification number	YV1UZK5V2P1289386
Mileage (Read)	32,772 km
First registration	9 Feb 2023
Number of holders	1
Power / Engine displacement	145 kw / 1,969 ccm
Fuel type / Cylinder	Hybrid Diesel / E / 4
Gearbox / Number of gears	Automatic / 8
Type of drive	All-wheel drive
Type of vehicle	SUV
Colour / colour code	Denim Blue Metallic
Doors / Seats	5 / 5
Upholstery type	Artificial leather
Colour of upholstery	Beige-White



Vehicle details

Maintenance booklet / proof	digital proof / complete	Next maintenance in	159 Tag(e)
Last maintenance on / at	02/2025 at 28,821 km		
Key is / should be	2 / 2	FZG documents	ZB#2 (B) was available (copy), ZB#1 (S) was not available
		Letter No.	GQ206410
Previous damage / Accident	None detectable	Repainting	Detectable
Inspection conditions	sufficient	Lifting equipment / pit	yes
Test drive	Not performed	Engine function test	Performed
Manufacturer key number/ type code number	9101 / BTJ 00013		
Emission standard	EURO6;WLTP;AP;PI/CI; M, N1 I	Fine dust sticker	
Permitted total weight	2,540 kg	Empty weight	

Tyres

Mounted tyres

#	Tyre size	Type of tyre	Manufacturer	Tread depth
1)	255/45 R20 105V	Summer tyres on Light alloy	Michelin	6mm / 6mm
2)	255/45 R20 105V	Summer tyres on Light alloy	Michelin	6mm / 6mm

Additional tyres

#	Tyre size	Type of tyre	Manufacturer	Tread depth
1)	235/60 R18 107H	Winter tyres on Light alloy	Michelin	7mm / 7mm
2)	235/60 R18 107H	Winter tyres on Light alloy	Michelin	7mm / 7mm

Replacement

Typ	Tyre size	Type of tyre	Manufacturer	Tread depth
	Tirefit	Expiration date 11/2026		

Legend: Tread depth information for tires on the left is in the first place, for tires on the right is in the second place on the axle in the direction of travel



Equipment

Standard equipment

- ABS - Anti-lock braking system
- Airbag, passenger side can be switched off
- Airbag, knee airbag for driver
- Active seat belts with belt tensioners
- All-wheel drive (AWD)
- Android infotainment system
- Electrically adjustable exterior mirrors
- Outside temperature display
- Hill Start Assist (HSA)
- Indicators (LED) integrated in exterior mirrors
- On-board computer
- roof edge spoiler
- diesel particulate filter
- Digital Instrumentation 2nd Gen.
- Electronic Stability Control (ESC) - Electronic Stability Control
- Electric windows front and rear
- Window frame in high-gloss black
- Luggage compartment partition net
- Belt height adjustment at the front
- Interior and exterior mirrors automatically dimming
- Intelligent driver information system
- Keyless Drive (electronic access system)
- Child safety lock for the rear doors (electric)
- Headrests (5) front and rear
- Headrests of the 2nd row of seats can be folded down (electrically)
- Load compartment blind
- Steering wheel adjustable for height and length
- Steering wheel: Multifunction buttons on the steering wheel
- Make-up mirrors for driver and passenger, illuminated
- Emergency brake lights
- Package: Parking Assistance Package
- Package: Winter Package
- Parking ticket holder
- Radio: High Performance Sound audio system
- Radio accessories: Digital radio reception (DAB+)
- Rain sensor
- Tire pressure monitoring system
- Wheels: Tire sealant
- Safety Assistance
- Whiplash protection system WHIPS
- Safety braking system with disc brakes all around (internally ventilated)
- Sport exterior mirrors in high-gloss black
- Sport front grille with horizontal struts and grille surround in high-gloss black
- Phone: Inductive smartphone charging system
- Glazing: Color glazing
- Driver and passenger side airbags with two-stage deployment system
- Airbag, side airbags for driver and front passenger and head/shoulder airbags for all occupants
- Ambient lighting
- Electrically foldable exterior mirrors
- Exterior mirrors and rear window heated (automatic)
- Hill Descent Control HDC
- Condensation sensor for automatic activation of the defroster function
- Brake light, third
- Roof rails in high-gloss black (integrated)
- Digital Services including Google Maps navigation system
- Aluminum door sills with Volvo logo at the front
- Electronic differential lock
- Advanced air quality system with fine dust filtration according to air quality standard PM2.5
- Automatic brake
- Transmission: 8-speed automatic transmission
- Automatic tailgate
- Interior lighting
- ISOFIX mount for the outer rear seats
- Keyless start
- Automatic climate control with separate temperature control for driver and front passenger
- Stainless steel loading sill protection in the luggage compartment
- LED headlight "Thor's Hammer"
- Steering wheel: three-spoke steering wheel, leather-free
- Air quality system with activated carbon filter
- Front center armrest with integrated storage compartment and cup holders
- Package: Seat Comfort Package
- Parking brake (electric)
- Upholstery: Leather/man-made leather comfort seats anthracite
- Radio accessories: Two USB-C interfaces on the back of the tunnel console
- Run-off Road Protection
- Rear seats in 40/60 ratio or completely foldable with through-loading function
- Power steering, speed-dependent
- Seats: Driver and passenger seats height adjustable (electrically)
- Sport front and rear apron
- Start/Stop technology
- Power socket
- First aid kit and warning triangle
- Lashing eyes in the luggage compartment (foldable)



- Preparation for Trailer Stability Control (TSA)
- Immobiliser
- Central locking with two radio remote controls and integrated emergency keys

Extra equipment

- Alarm system with motion/tilt sensor (security locking)
- Paintwork: metallic paint
- Package: Lighting package (LED fog lights (integrated in the front spoiler) - headlight cleaning system - full-LED "Thor's Hammer" Active High Beam headlights with extended high beam, dynamic cornering lights, intelligent high beam assist with adaptive headlight range control, and integrated LED daytime running lights)
- Panoramic glass sunroof with lifting function (electric) (with integrated, continuously adjustable sunshade)
- Radio: Premium Sound audio system by Harman Kardon (600 watts of power - 14 speakers - Fresh Air - subwoofer - Dirac Unison - sound optimization)
- Glazing: Side and rear windows tinted (from B-pillar)

- Warning tone/indicator when seat belts are not fastened (for all seats)

- Trailer hitch (semi-electric)
- Package: Driver Assistance Package (Driver Assistance: - Adaptive Cruise Control - Emergency Stop Assist - automatic emergency stop system when warnings are ignored - Pilot Assist - Lane Keeping Assist up to speeds of 130 km/h Driver Awareness: - Blind Spot Information System - Blind Spot Assist including lane change warning for rapidly approaching vehicles including steering intervention - Cross Traffic Alert - cross-traffic warning with braking intervention - Rear Impact Mitigation - preventative protection in the event of an impending rear-end collision)
- Wheels: 20" 5-Y-spoke sport design diamond cut/high-gloss black alloy wheels (255/45 R20 tires with 8.0 x 20" rims)

Brief expert findings

Documents submitted	At the time of the inspection, the registration certificate Part 2 (letter) was available, but the registration certificate Part 1 (certificate) was not. (Copy)
VIN comparison	The vehicle identification number (VIN) was read from the vehicle and its conformity with the submitted documents was verified during the inspection by the undersigned.
Inspection	The inspection conditions were sufficient for the assessment of the vehicle. Lifting equipment and a pit were available for examining the vehicle.
Test drive	No test drive/maneuvering was carried out during the inspection of the vehicle.
Engine function test	An engine test run was performed.

Value reducing factors

No.	Component group	Description
1	Trim / covers	Boot lid - interior trim - Scratch(es) - Replace
2	Multimedia system	Navigation system (Bild bleibt weiß) - Functional / admissibility - Perform diagnosis
3	Front bumper	Spoiler - Deformed - Replace
4	Bonnet	Bonnet (Beginnende Korrosion) - Stone chips - Paint

Wear and tear

No.	Component group	Description
1	Vehicle glazing	Windscreen - Stone chips - No deduction

The vehicle shows signs of wear commensurate with its age and use.

Repainting

No.	Repainting
1	Door - front right side, Professionally carried out, Invoice of repair done Non-existent

Paint coat thickness measurement

Door - front right side	224 µm
-------------------------	--------



Order/Scope of order

The order was placed to prepare a sales report for the vehicle described. This includes the following:

- Description of core relevant information about the vehicle
- Documentation of equipment features
(*Delivery by third-party service providers*)
- Documentation of damage, defects, missing parts
- Documentation of previous damage, unrepaired previous damage, repainting
- a brief visual or functional inspection of the equipment details if possible.
(*Functional tests of driver assistance systems are not included in the scope of services!*)
- a photo documentation of the vehicle

Basis for the order

This product is based on the Alphabet Fuhrpark GmbH guidelines for vehicle returns and valuations. The expert makes the explicit findings in each individual case objectively within the framework of the specified standards based on his or her own expertise.

The vehicle inspection takes place in a disassembled state.

Damage or defects that can only be detected during disassembly/diagnosis work or through advanced knowledge remain within the scope of the prognosis risk. An extended risk exists for concealed defects caused by fraudulent deception and not identifiable by the expert.

Damage or defects resulting from normal use or wear and tear of the vehicle will be accepted according to the applicable standard.

There was no explicit identification or monetary consideration of the expected features within the product.

Features which in their nature and severity slightly exceed normal use but do not constitute unacceptable damage will be documented and identified under signs of use if necessary.

Damage or defects which, according to the underlying standard, can no longer be attributed to normal use or wear and tear are listed in the product under "Depreciating Factors".

Depending on the product specification, a monetary ID can be provided. If this takes place, the costs can be 100% d or pro rata depending on the vehicle's age and mileage.

Previous damages

Apparently, no repaired previous damage could be found on the vehicle.

Comments

- Winterradsatz ist kein Bestandteil des Auslieferungsumfangs



Figure 1: Diagonal front (left)



Figure 2: Diagonal front (right)



Figure 3: Diagonal rear (left)



Figure 4: Diagonal rear (right)



Figure 5: Interior - front



Figure 6: Interior - rear



Figure 7: Instrument cluster



Figure 8: Instrument panel



Figure 9: Interior 360° view



Figure 10: Cargo area

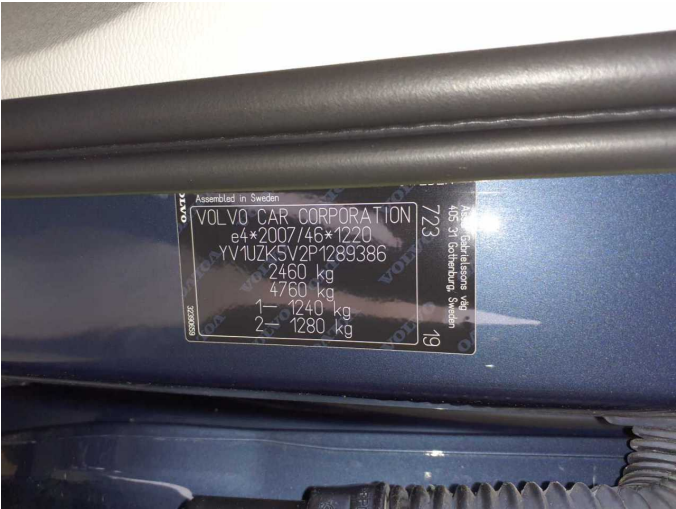


Figure 11: VIN



Figure 12: Mounted tyres

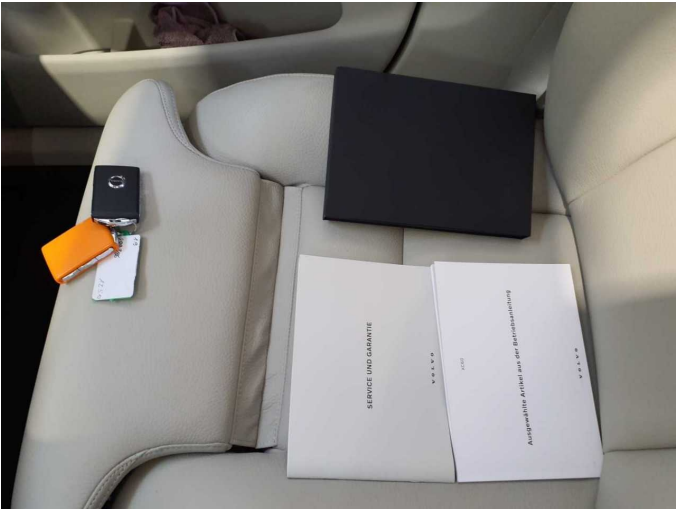


Figure 13: Documents



Figure 14: Documents

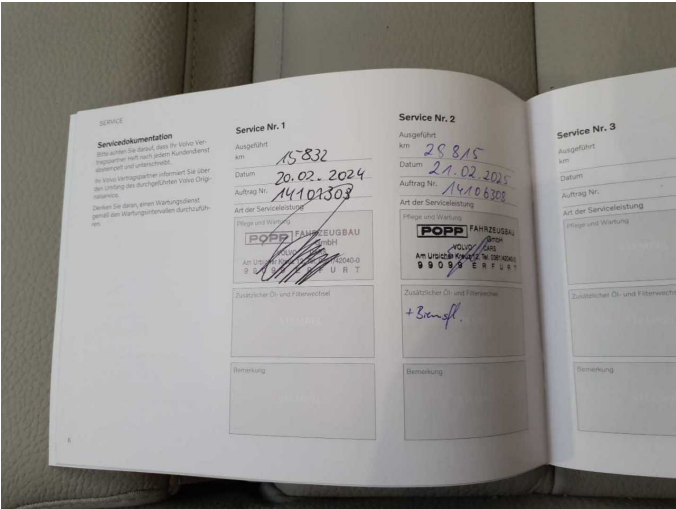


Figure 15: Documents



Figure 16: Additional tyres

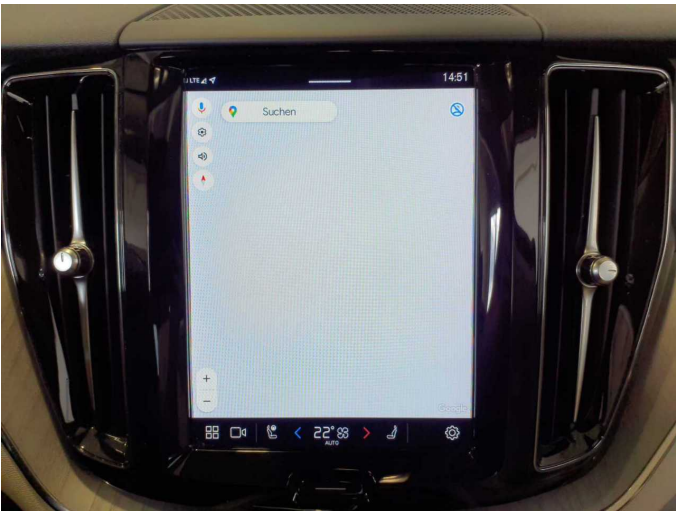


Figure 17: Navigation



Figure 18: Misc.



Figure 19: Misc.



Figure 20: Misc.



Figure 21: Misc.



Figure 22: Misc.



Figure 23: Misc.



Figure 24: Misc.



Figure 25: Misc.



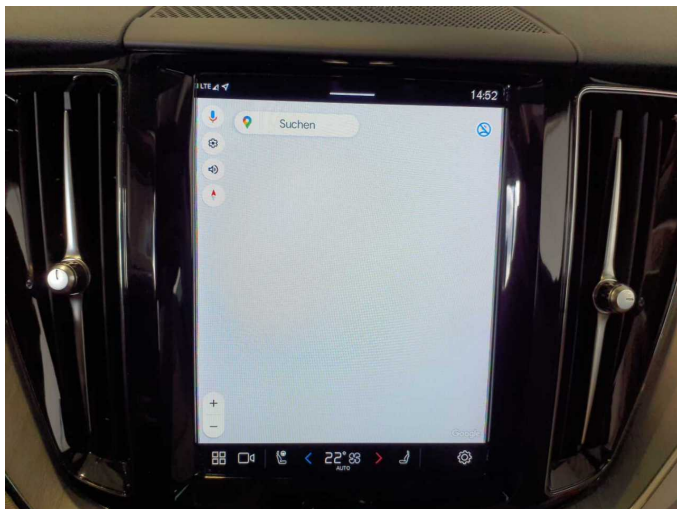
Damage 1: Trim / covers: Boot lid - interior trim - Scratch(es) - Replace



Damage 1: Trim / covers: Boot lid - interior trim - Scratch(es) - Replace



Damage 1: Trim / covers: Boot lid - interior trim - Scratch(es) - Replace



Damage 2: Multimedia system: Navigation system (Bild bleibt weiß) - Functional / admissibility - Perform diagnosis



Damage 3: Front bumper: Spoiler - Deformed - Replace



Damage 3: Front bumper: Spoiler - Deformed - Replace



Damage 3: Front bumper: Spoiler - Deformed - Replace



Damage 3: Front bumper: Spoiler - Deformed - Replace



Damage 4: Bonnet: Bonnet (Beginnende Korrosion) - Stone chips - Paint



Damage 4: Bonnet: Bonnet (Beginnende Korrosion) - Stone chips - Paint



Damage 4: Bonnet: Bonnet (Beginnende Korrosion) - Stone chips - Paint



Damage 4: Bonnet: Bonnet (Beginnende Korrosion) - Stone chips - Paint



Damage 4: Bonnet: Bonnet (Beginnende Korrosion) - Stone chips - Paint



Damage 4: Bonnet: Bonnet (Beginnende Korrosion) - Stone chips - Paint



Repainting 1: Door - front right side



Repainting 1: Door - front right side



Wartungshistorie

(gemäß Auftraggeber Informationen)

Fahrgestellnummer: YV1UZZK5V2P1289386
Hersteller / Modell: VOLVO VOLVO XC60 B4 D AWD Plus Dark

Datum	KM-Stand	Beschreibung
21.02.2025	28.821	Bremsflüssigkeit; Bremsflüssigkeit ern; Motoröl b. Wartung; Ölfilter ern; Regelwartungsdienst; Wartung Sonstiges
20.02.2024	15.838	Motoröl b. Wartung; Ölfilter ern; Regelwartungsdienst; Wartung Sonstiges