



# VOLVO XC60

## XC60 D4 Geartronic

VIN NO YV1UZA8UDK1253626  
Registration Number UDK1253626



MOT Date	Number of Owners	Number of Keys	Odometer Reading
2025-08-01	2	2	70938 km
Last Service	Last Service Mileage	First Registration Date	Country First Registered
2024-11-20	63230	2018-10-15	Germany

### Inspection Report Summary

Customer	BCA Online	Report Number	P20251002162304
Inspection Date / Place	2025-10-02 / BCA Neuss	Cosmetic Grade	4

### Vehicle Summary

Vehicle Condition	Runner	VAT Type	Margin
Fuel Type	Diesel	Road Worthy	Yes
Colour	Black	Engine Size (cc)	1969
Engine Size	2.0	No of Doors	5
Body Type	SUV	Drive Train	Front
Seat Colour		No of Seats	5
Seat Covering Name	Schwarz	Seat Covering	Synthetic Leather
Charging Cables		NEDC CO2 Rating (q/km)	129
Gearbox Type	Automatic		

### Vehicle History & Documents

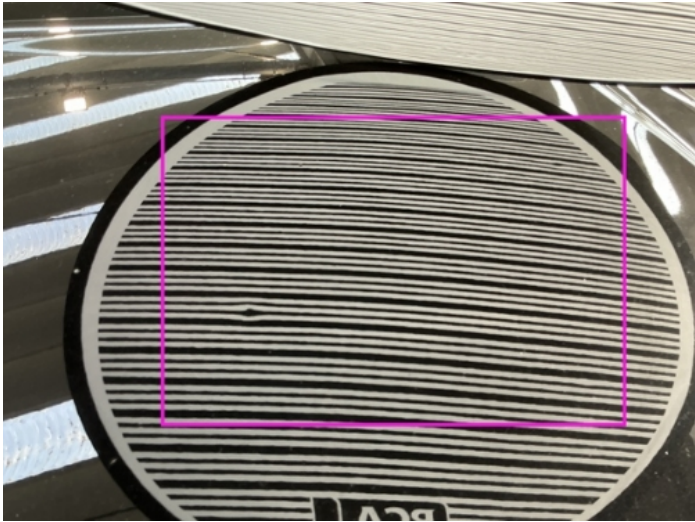
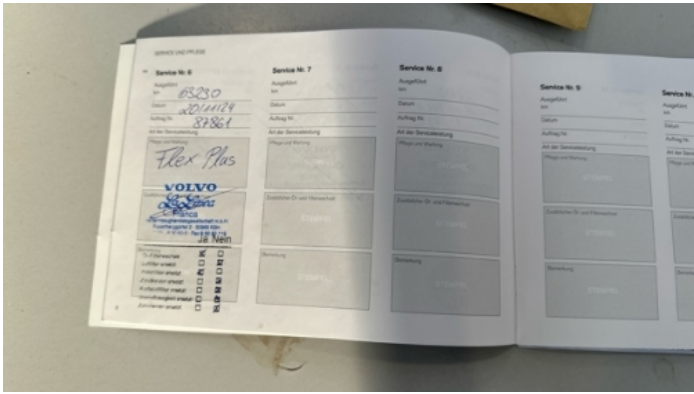
Service Book Available	Present	Next Service Mileage	km
Previous Usage		Imported	No
Manufacturer Warrenty			











## Equipment

Tinted Glass	USB Socket	Alloys wheels	Bluetooth telephone interface
Diesel particulate filter	Enhanced speaker system	Front parking sensors	Remote central locking
Roof rails	Stability control	Electrically folding wing mirrors	Laneassist
LED Headlamps	Rear parking sensors	Tow ball	Airbag Status
Anti-lock braking	Cruise control	Digital dashboard	Front fog lamps
Remote adjusting wing mirrors	Reversing Camera	Satellite navigation	CD Player
Electric tailgate	Leather steering wheel	Radio	Driver Seat Electrically adjustable

## Equipment Details

Tow Ball Type	Pivoted	Air Conditioning	Dual Zone Climate Control
Alloy Wheel Size	19	Enhanced Speaker System	Harman/kardon
Seat Heating	Front		

## Wheels & Tyres

Right Front Tyre Depth	4	Left Front Tyre Depth	4
Right Rear Tyre Depth	4	Left Rear Tyre Depth	4

## Cosmetic Damage

	Component	Damage	Comments
1	Door / Front Right	Paint / Poor Previous Repair	
2	Rim / Front Left	Out of Bodywork / Scratch	
3	Hood	Bodywork / Dent / Dent	
4	Pillar / Front Right	Paint / Scratch / Scuff	
5	Bumper / Back	Bodywork / Breakage	
6	Bumper / Back	Paint / Scratch / Scuff	
7	Bumper / Back	Paint / Scratch / Scuff	
8	Fender / Back Left	Paint / Scratch / Scuff	
9	Door / Back Left	Paint / Scratch / Scuff	
10	Bumper / Back	Paint / Scratch / Scuff	





1. Door / Front Right  
Paint / Poor Previous Repair -



2. Rim / Front Left  
Out of Bodywork / Scratch -



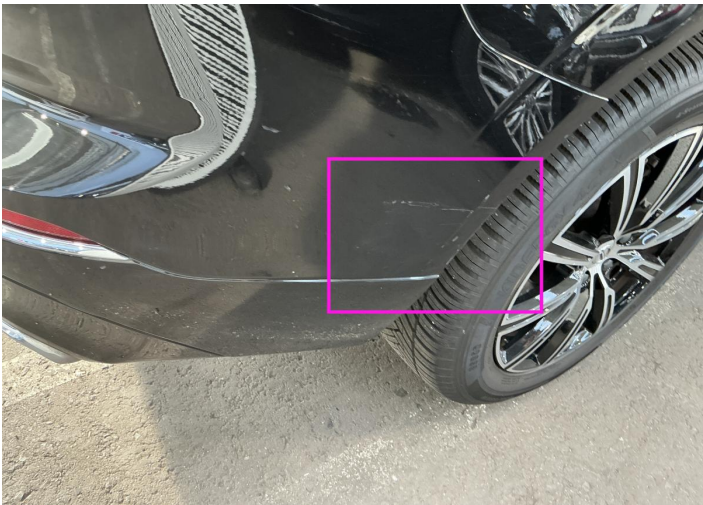
3. Hood  
Bodywork / Dent / Dent -



4. Pillar / Front Right  
Paint / Scratch / Scuff -

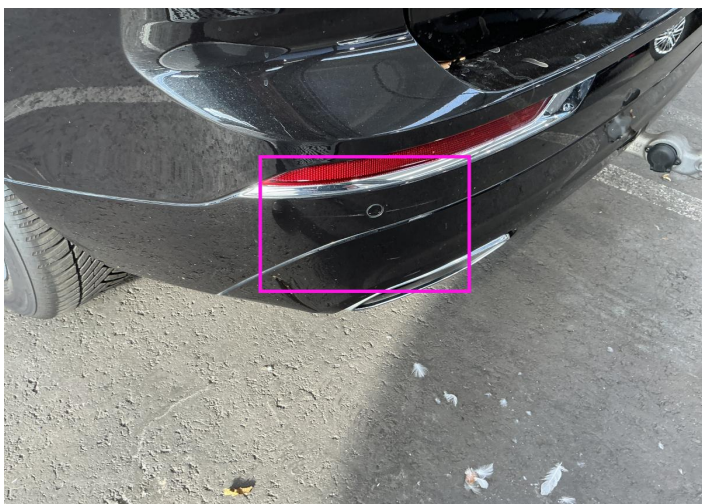


5. Bumper / Back  
Bodywork / Breakage -

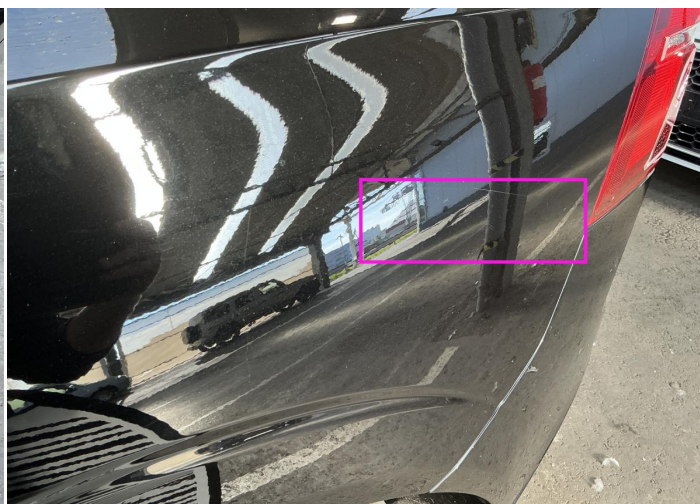


6. Bumper / Back  
Paint / Scratch / Scuff -

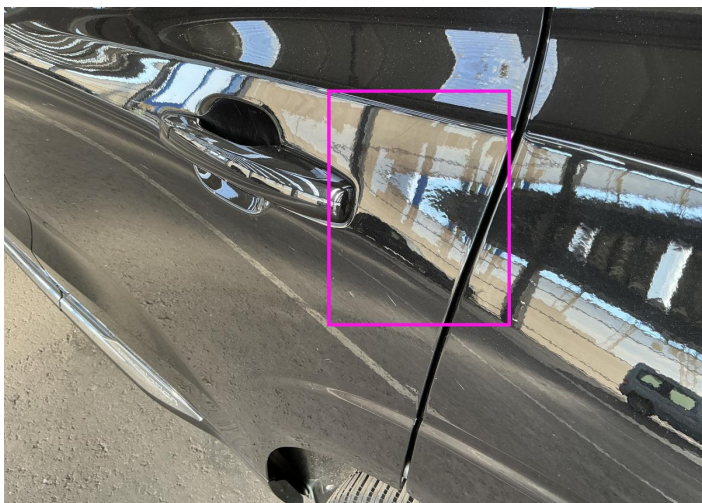




7. Bumper / Back  
Paint / Scratch / Scuff -



8. Fender / Back Left  
Paint / Scratch / Scuff -



9. Door / Back Left  
Paint / Scratch / Scuff -



10. Bumper / Back  
Paint / Scratch / Scuff -



## Mechanical Condition

### Control Lights

ABS Warning Light	✓	ESP Fault/Traction Control Malfunction Light	✓
Diesel Particulate Filter Light	✓	Airbag Warning Light	✓
Oil Pressure Warning Light	✓	Brake Warning Light	✓
Power Steering Warning Light	✓	Alternator / Battery	✓
No Dashboard Lights	✓	Display Defect	✓
Service Light	✓	Tire Pressure Monitoring System	✓

### Engine

Engine Status / EML	✓	Engine Leak Visible	✓
Engine Starts	✓		

### Gearbox

Gear Box	✓
----------	---

### Equipments Test

AC / Heating System	✓	Main & Spare Keys Functioning	✓
Electric Windows	✓	Navigation System	✓
Audio Equipment	✓	Parking Sensors / Cameras Functioning	✓

### Levels

Brakes Fluid	NA	Coolant Fluid	NA
--------------	----	---------------	----

Test Drive Inspection

Steering Wheel

Steering | Noise / Anomaly

Engine

Engine Noise The Gears Scratch / Skip / Abnormal Operation

Fume Quantity Power Loss

Brake

Brake System Anomaly

General

Test Driven Status

- No troubles detected, good condition or correct tests, according to vehicle age and mileage
- Damages or malfunction detected that requires repairs by the buyer
- Not applicable
- Not tested

Disclaimer

Please also note the "UserGuide condition report", which shows the scope of the vehicle description. [User Guide](#)