



Expertise

Protocol number: 41530174  
Order No. / Reference: 25056456  
Inspection date: 12 Sept 2025

Manufacturer: Volvo

Model: XC90 T8 AWD Recharge Geartronic RDesign Edition

VIN: YV1LFH5V4P1917858



Vehicle details	
Manufacturer / Type / Model / Equipment	
Volvo XC90 T8 AWD Recharge Geartronic RDesign Edition	
Vehicle Identification number	YV1LFH5V4P1917858
Mileage (Read)	25,874 km
First registration	2 Sept 2022
Number of holders	1
Next periodical technical inspection	09/2025
(Taken from ZBI)	
Power / Engine displacement	228 kw / 1,969 ccm
Fuel type / Cylinder	Hybr.B/E ext. edition / 4
Gearbox / Number of gears	Automatic / 8
Type of drive	All-wheel drive
Type of vehicle	SUV
Colour / colour code	Pebble Grey Metallic
Doors / Seats	5 / 7
Upholstery type	Leather
Colour of upholstery	Black-Anthracite



## Vehicle details

<b>Maintenance booklet / proof</b>	digital proof / complete	<b>Next maintenance in</b>	322 Tag(e)
<b>Last maintenance on / at</b>	07/2025 at 23,054 km		
<b>Key is / should be</b>	2 / 2	<b>FZG documents</b>	ZB#2 (B) was available (copy), ZB#1 (S) was not available
		<b>Letter No.</b>	GJ558785
<b>Previous damage / Accident</b>	None detectable	<b>Repainting</b>	None detectable
<b>Inspection conditions</b>	sufficient	<b>Lifting equipment / pit</b>	yes
<b>Test drive</b>	Not performed	<b>Engine function test</b>	Performed
<b>Manufacturer key number/ type code number</b>	9101 / BUL 00009		
<b>Emission standard</b>	EURO6;WLTP;AP;PI/CI; M, N1 I	<b>Fine dust sticker</b>	
<b>Permitted total weight</b>	2,950 kg	<b>Empty weight</b>	

## Tyres

### Mounted tyres

#	Tyre size	Type of tyre	Manufacturer	Tread depth
1)	275/45 R20 110H	All-season tyres on Light alloy	Michelin	5mm / 5mm
2)	275/45 R20 110H	All-season tyres on Light alloy	Michelin	5mm / 5mm

### Additional tyres

#	Tyre size	Type of tyre	Manufacturer	Tread depth
1)	235/55 R19 105H	Winter tires (with run-flat tires) on Light alloy	Pirelli	6mm / 6mm
2)	235/55 R19 105H	Winter tires (with run-flat tires) on Light alloy	Pirelli	6mm / 6mm

### Replacement

Typ	Tyre size	Type of tyre	Manufacturer	Tread depth
	Tirefit	Expiration date 07/2026		

**Legend:** Tread depth information for tires on the left is in the first place, for tires on the right is in the second place on the axle in the direction of travel

## Equipment

### Standard equipment

- ABS - Anti-lock braking system
- Airbags
- All-wheel drive (AWD)
- Ambient lighting
- Applications on the side windows in high-gloss black
- Armrests with integrated storage compartment and cup holder for the 3rd row of seats (left and right)
- Electrically adjustable exterior mirrors
- Outside temperature display
- Hill Descent Control (HDC)
- Hill Start Assist (HSA)
- Indicators (LED) integrated in exterior mirrors
- On-board computer
- Brake light, third
- CleanZone air quality system with activated carbon filter
- Anthracite headliner
- Roof spoiler
- tachometer
- Driver Alert - Attention Warning
- Parking aid, front and rear
- Electronic differential lock
- Electronic stability control
- Automatic brake
- Luggage compartment partition net
- Transmission: 8-speed Geartronic automatic transmission
- Automatic tailgate
- Rear window wiper
- Interior lighting
- IntelliSafe Assistant
- ISOFIX mount for the outer rear seats
- Keyless start
- Automatic climate control with 4-zone temperature control
- Headrests (7)
- Charging cable Schuko / Type 2 (Mode 2), 4.5 m length
- Load compartment blind (semi-automatic)
- Steering wheel: heated steering wheel
- Steering wheel: Sport leather steering wheel
- Front center armrest including cup holder
- Emergency brake lights
- Parking brake (electric)
- Upholstery: RDesign nubuck textile/nappa leather, sports seats
- Radio accessories: Smartphone integration Apple CarPlay and Android Auto
- Rain sensor with automatic light function
- Road Edge Detection
- Run-off Road Protection
- Wheels: Tire sealant
- Airbag, passenger side can be switched off
- Active seat belts with belt tensioners
- Aluminum loading sill protection in the luggage compartment
- Leather-look dashboard and door trim with contrasting stitching
- Electrically foldable exterior mirrors
- Exterior mirrors and rear window heated (automatic)
- Fastening system for carrier bags in the luggage compartment
- Condensation sensor for automatic activation of the defroster function
- Brake energy recovery
- City Safety
- Connected Safety
- Roof rails in high-gloss black (integrated)
- Digital instrumentation
- Drive Mode
- Inlay aluminum inlay metal mesh
- Aluminum door sills with Recharge lettering, front (illuminated) and rear
- Electric windows front and rear
- Bottle holder in the luggage compartment
- Cruise control with speed limit (variable)
- Belt height adjustment front and rear (2nd row of seats)
- Rear window, heated
- Interior and exterior mirrors automatically dimming
- Intelligent driver information system
- IntelliSafe Surround
- Keyless Drive
- Parental controls
- Air conditioning for the 3rd row of seats
- Headrests of the 2nd row of seats can be folded down (electrically)
- Steering wheel adjustable for height and length
- Steering wheel: Multifunction buttons on the steering wheel
- Make-up mirrors for driver and passenger, illuminated
- Sensus navigation system
- Oncoming Lane Mitigation
- Pollen filter
- Radio: Sensus Connect infotainment system with high-performance sound
- Radio accessories: Two USB-C interfaces on the back of the tunnel console
- Tire pressure monitoring system
- Road Sign Information (RSI) - Traffic Sign Recognition
- Wheels: 20" 5-spoke sport design diamond cut/black alloy wheels
- Rear seat backrests can be folded down 60/40 or completely
- Whiplash Protection System (WHIPS)
- Power steering, speed-dependent
- Seats: Leg rest adjustable (electrically) for driver and passenger seat



- Rear view camera
- Heated windscreen washer nozzles
- Headlight cleaning system
- Sensus Connect infotainment system
- Safety braking system with disc brakes all around (internally ventilated)
- Seats: Third row (7-seater)
- Seats: Driver and passenger seats height adjustable (electrically)
- Seats: Heated front seats
- Sport exterior mirrors in high-gloss black
- Sport front grille with horizontal struts and surround in high-gloss black
- Storage compartment under the load floor
- subwoofer
- Textile floor mats
- Glazing: Color glazing
- Full-LED headlight "Thor's Hammer" ACTIVE HIGH BEAM
- Preparation for Trailer Stability Control (TSA)
- Immobiliser
- Central locking with two radio remote controls and integrated emergency keys

- Seats: Driver and passenger seats electrically adjustable
- Seats: Lumbar support (4-way electrically adjustable) for driver and front passenger seat
- Sun blinds for the rear side windows (integrated)
- Sport front and rear apron
- Sports pedals
- Start/Stop technology
- Power socket
- Textile floor mat for the 3rd row of seats
- First aid kit and warning triangle
- Lashing eyes in the luggage compartment (foldable)
- Volvo On Call with Wi-Fi hotspot
- Warning tone/indicator when seat belts are not fastened (for all seats)

#### Extra equipment

- Alarm system (with motion/tilt sensor, security locking and private locking (separate glove compartment and trunk locking))
- Package: Xenium Package (Panorama glass sunroof with lift function and integrated, continuously adjustable sunshade (electric) - Sun blinds for the rear side windows (integrated) - High Performance Sound Pro audio system by Harman/Kardon: - 600 watts of power - 14 speakers - Fresh Air subwoofer - Dirac Unison sound optimization - Advanced air quality system with fine dust filtration according to air quality standard PM2.5)
- Trailer hitch (semi-electric)
- Windscreen, heater
- Paintwork: metallic paint
- Seats: Heated rear seats (outer seats of the 2nd row)
- Phone: Inductive smartphone charging system (charges smartphones that support the Qi standard wirelessly on a charging surface)
- Glazing: Side and rear windows tinted (from B-pillar)

#### Brief expert findings

Documents submitted	At the time of the inspection, the registration certificate Part 2 (letter) was available, but the registration certificate Part 1 (certificate) was not. (Copy)
VIN comparison	The vehicle identification number (VIN) was read from the vehicle and its conformity with the submitted documents was verified during the inspection by the undersigned.
Inspection	The inspection conditions were sufficient for the assessment of the vehicle. Lifting equipment and a pit were available for examining the vehicle.
Test drive	No test drive/maneuvering was carried out during the inspection of the vehicle.
Engine function test	An engine test run was performed.

#### Value reducing factors

No.	Component group	Description
1	Misc.	Main inspection - No evidence - No deduction
2	Interior	Boot cover / roller cover - Damaged - Repair
3	Multimedia system	Navigation system - Non-operational - Perform diagnosis



## Wear and tear

No.	Component group	Description
1	Door - front right side	Door edge - Scratched - No deduction
2	Door - front left side	Door edge - Scratched - No deduction
3	Trim / covers	Door trim - front left side - Scratched - No deduction
4	Front bumper	Front bumper (Kratzer) - Stone chips - No deduction
5	Vehicle glazing	Windscreen - Stone chips - No deduction
6	Body	Body (oberflächlich) - Scratch(es) - No deduction
7	Rear bumper	Rear bumper - Scratch(es) - No deduction
8	Misc.	Main inspection - No evidence - No deduction

The vehicle shows signs of wear commensurate with its age and use.

## Order/Scope of order

The order was placed to prepare a sales report for the vehicle described. This includes the following:

- Description of core relevant information about the vehicle
- Documentation of equipment features  
(*Delivery by third-party service providers*)
- Documentation of damage, defects, missing parts
- Documentation of previous damage, unrepaired previous damage, repainting
- a brief visual or functional inspection of the equipment details if possible.  
(*Functional tests of driver assistance systems are not included in the scope of services!*)
- a photo documentation of the vehicle

## Basis for the order

This product is based on the Alphabet Fuhrpark GmbH guidelines for vehicle returns and valuations. The expert makes the explicit findings in each individual case objectively within the framework of the specified standards based on his or her own expertise.

The vehicle inspection takes place in a disassembled state.

Damage or defects that can only be detected during disassembly/diagnosis work or through advanced knowledge remain within the scope of the prognosis risk. An extended risk exists for concealed defects caused by fraudulent deception and not identifiable by the expert.

Damage or defects resulting from normal use or wear and tear of the vehicle will be accepted according to the applicable standard.

There was no explicit identification or monetary consideration of the expected features within the product.

Features which in their nature and severity slightly exceed normal use but do not constitute unacceptable damage will be documented and identified under signs of use if necessary.

Damage or defects which, according to the underlying standard, can no longer be attributed to normal use or wear and tear are listed in the product under "Depreciating Factors".

Depending on the product specification, a monetary ID can be provided. If this takes place, the costs can be 100% d or pro rata depending on the vehicle's age and mileage.

## Previous damages

Apparently, no repaired previous damage could be found on the vehicle.





Figure 1: Diagonal front (left)



Figure 2: Diagonal front (right)



Figure 3: Diagonal rear (left)



Figure 4: Diagonal rear (right)



Figure 5: Interior - front



Figure 6: Interior - rear





Figure 7: Instrument cluster



Figure 8: Instrument panel



Figure 9: Interior 360° view ([Online link](#))



Figure 10: Cargo area

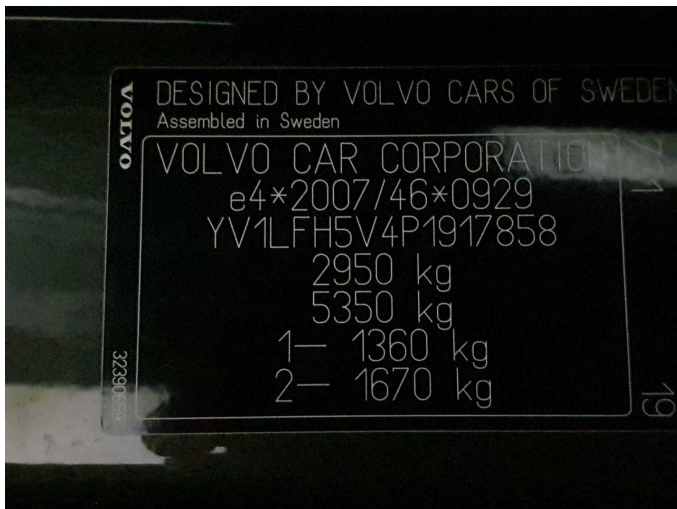


Figure 11: VIN



Figure 12: Mounted tyres



Figure 13: Documents



Figure 14: Additional tyres

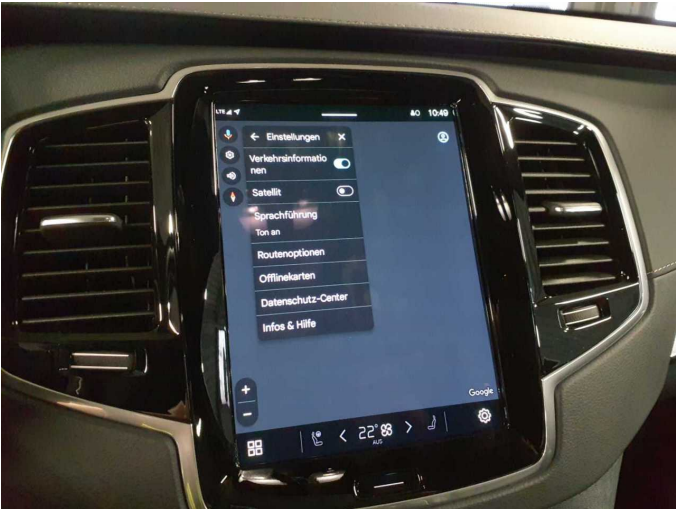


Figure 15: Navigation

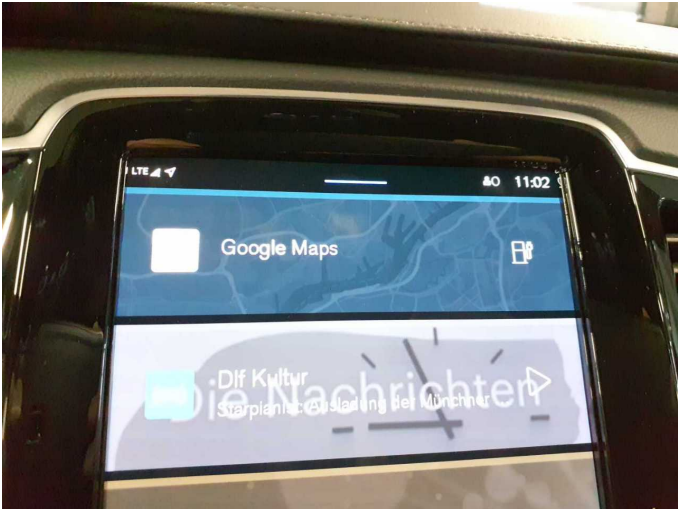


Figure 16: Navigation



Figure 17: Misc.



Figure 18: Misc.



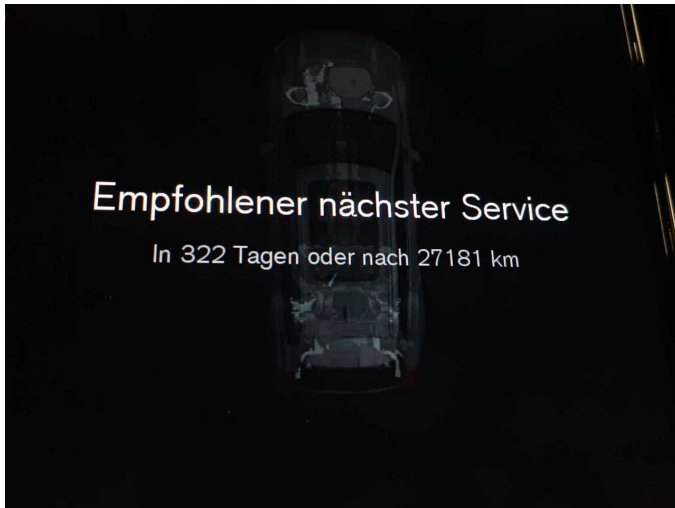


Figure 19: Misc.



Figure 20: Misc.



Figure 21: Misc.



Figure 22: Misc.



Figure 23: Misc.



Figure 24: Misc.



Figure 25: Misc.



Figure 26: Misc.

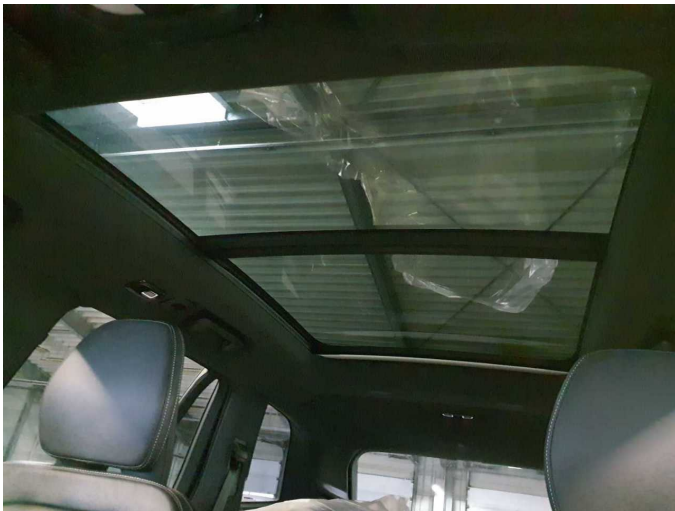


Figure 27: Misc.

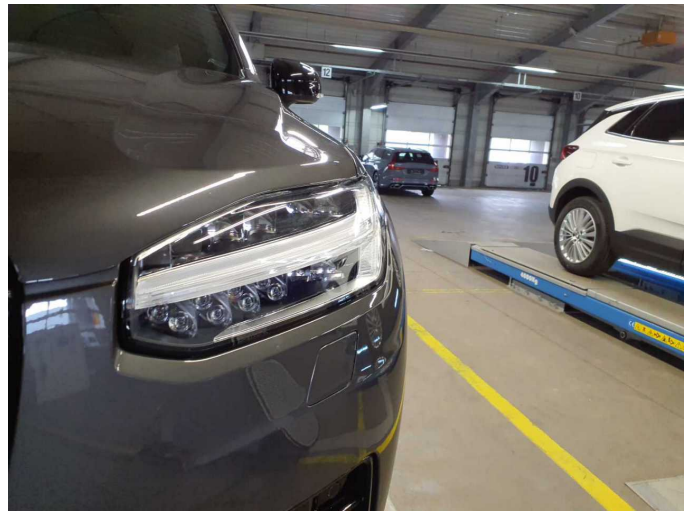


Figure 28: Misc.



Figure 29: Misc.



Figure 30: Misc.





Figure 31: Misc.



Figure 32: Misc.



Figure 33: Misc.



Figure 34: Misc.

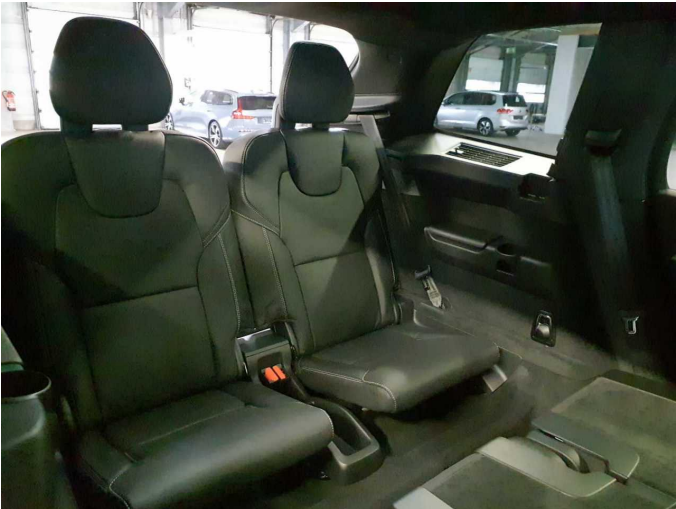


Figure 35: Misc.

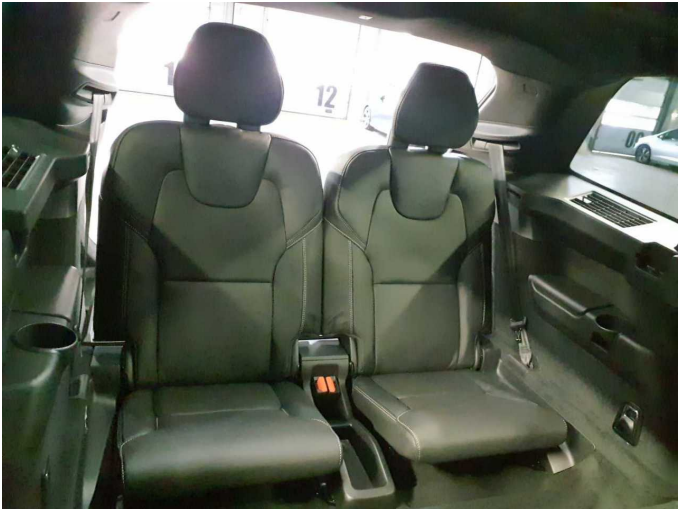


Figure 36: Misc.





Figure 37: Misc.

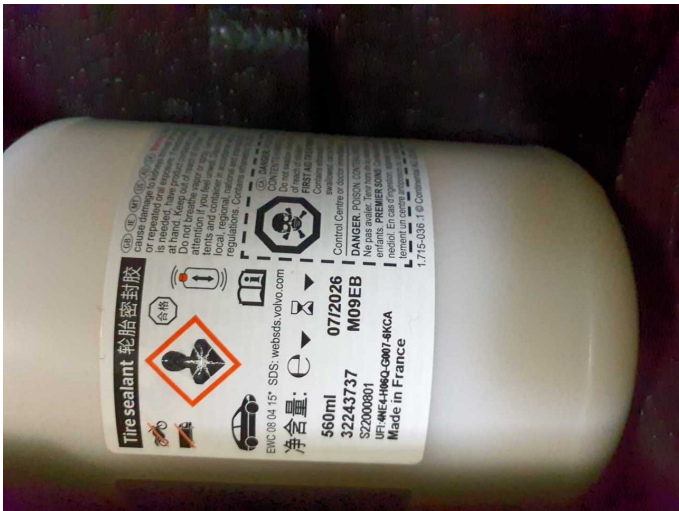


Figure 38: Misc.



Figure 39: Misc.



Figure 40: Misc.

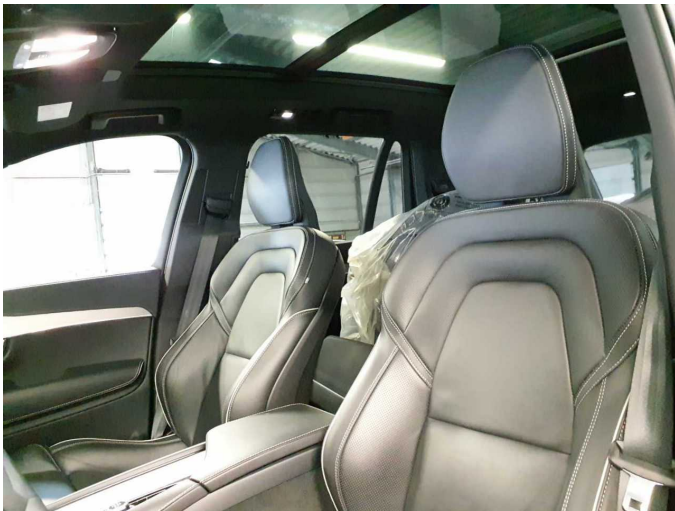


Figure 41: Misc.



Figure 42: Misc.





**Figure 43:** Misc.



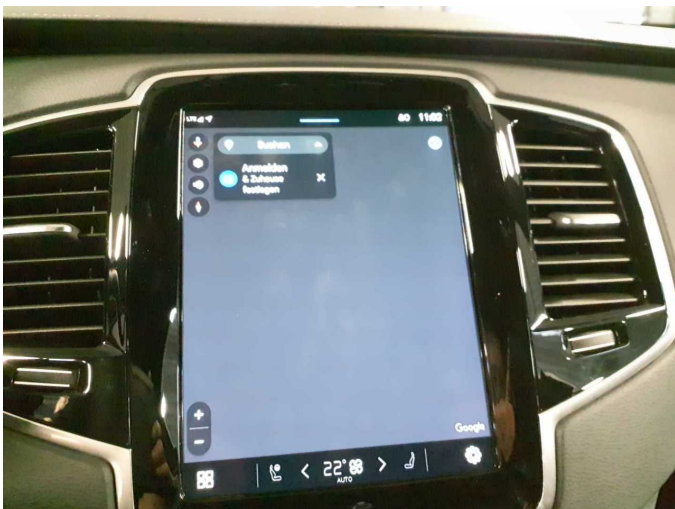
**Damage 2:** Interior: Boot cover / roller cover - Damaged - Repair



**Damage 2:** Interior: Boot cover / roller cover - Damaged - Repair



**Damage 2:** Interior: Boot cover / roller cover - Damaged - Repair



**Damage 3:** Multimedia system: Navigation system - Non-operational - Perform diagnosis



# Wartungshistorie

(gemäß Auftraggeber Informationen)

Fahrgestellnummer: YV1LFH5V4P1917858

Hersteller / Modell: VOLVO VOLVO XC90 T8 AWD Recharge Geartronic RDesign  
Edition

Datum	KM-Stand	Beschreibung
15.08.2025	23.054	Motoröl b. Wartung; Ölfilter ern; Regelwartungsdienst; Wartung Sonstiges
23.07.2024	15.723	Bremsflüssigkeit; Bremsflüssigkeit ern; Motoröl b. Wartung; Ölfilter ern; Regelwartungsdienst; Wartung Sonstiges
26.07.2023	8.149	Motoröl b. Wartung; Ölfilter ern; Regelwartungsdienst; Wartung Sonstiges