



Expertise

Protocol number: 41337532
Order No. / Reference: 25147311
Inspection date: 28 Aug 2025

Manufacturer: Volvo	Model: XC90 T8 AWD Recharge Ultimate Dark
VIN: YV1LFH5V1P1981548	



Vehicle details	
Manufacturer / Type / Model / Equipment	
Volvo XC90 T8 AWD Recharge Ultimate Dark	
Vehicle Identification number	YV1LFH5V1P1981548
Mileage (Read)	122,220 km
First registration	14 Apr 2023
Number of holders	1
Next periodical technical inspection	04/2026
(Report not on hand)	
Power / Engine displacement	228 kw / 1,969 ccm
Fuel type / Cylinder	Hybr.B/E ext. edition / 4
Gearbox / Number of gears	Automatic / 8
Type of drive	All-wheel drive
Type of vehicle	SUV
Colour / colour code	Onyx Schwarz-Metallic
Doors / Seats	5 / 7
Upholstery type	Leather
Colour of upholstery	Beige



Vehicle details

Maintenance booklet / proof	digital proof / complete	Next maintenance in	79 Tag(e)
Last maintenance on / at	11/2024 at 93,750 km		
Key is / should be	2 / 2	FZG documents	ZB#2 (B) was available (copy), ZB#1 (S) was not available
		Letter No.	GS760757
Previous damage / Accident	Detectable	Repainting	Detectable
Inspection conditions	sufficient	Lifting equipment / pit	yes
Test drive	Not performed	Engine function test	Performed
Manufacturer key number/ type code number	9101 / BUL 00009		
Emission standard	EURO6;WLTP;AP;PI/CI; M, N1 I	Fine dust sticker	
Permitted total weight	2,950 kg	Empty weight	

Tyres

Mounted tyres

#	Tyre size	Type of tyre	Manufacturer	Tread depth
1)	275/35 R22 104W	Summer tyres on Light alloy	Pirelli	6mm / 6mm
2)	275/35 R22 104W	Summer tyres on Light alloy	Pirelli	6mm / 6mm

Additional tyres

#	Tyre size	Type of tyre	Manufacturer	Tread depth
1)	235/55 R19 105H	Winter tyres on Light alloy	Continental	5mm / 5mm
2)	235/55 R19 105H	Winter tyres on Light alloy	Continental	5mm / 5mm

Replacement

Typ	Tyre size	Type of tyre	Manufacturer	Tread depth
	Tirefit	Expiration date 03/2027		

Legend: Tread depth information for tires on the left is in the first place, for tires on the right is in the second place on the axle in the direction of travel

Equipment

Standard equipment

- ABS - Anti-lock braking system
- Airbag, passenger side can be switched off
- Active seat belts with belt tensioners
- Aluminum loading sill protection in the luggage compartment
- Applications in the front bumper in high-gloss black
- Armrests with integrated storage compartment and cup holder for the 3rd row of seats (left and right)
- Electrically adjustable exterior mirrors
- Outside temperature display
- Hill Descent Control (HDC)
- Hill Start Assist (HSA)
- Indicators (LED) integrated in exterior mirrors
- On-board computer
- Brake light, third
- roof edge spoiler
- Deactivation of the high-voltage battery
- Digital Instrumentation 2nd Gen.
- Driver Awareness
- Aluminum door sills with Recharge lettering, front and rear
- Electronic stability control
- Electric windows front and rear
- Window frame in high-gloss black
- Bottle holder in the luggage compartment
- Transmission: 8-speed automatic transmission
- Head-up display: Graphic display of driving information in the windscreen
- Rear window wiper
- Intelligent driver information system
- Keyless Drive (electronic access system)
- Child safety lock for the rear doors (electric)
- Air conditioning for the 3rd row of seats
- Headrests of the 2nd row of seats can be folded down (electrically)
- Load compartment blind (semi-automatic)
- Steering wheel: heated steering wheel
- Make-up mirrors for driver and passenger, illuminated
- Emergency brake lights
- Package: Light Package
- Panoramic glass sunroof with lifting function (electric)
- Parking ticket holder
- Radio accessories: Smartphone integration Apple CarPlay
- Rain sensor with automatic light function
- Tire pressure monitoring system
- Wheels: Tire sealant
- Whiplash Protection System (WHIPS)
- Safety braking system with disc brakes all around (internally ventilated)
- Acoustic Vehicle Alerting System (AVAS)
- Airbags
- All-wheel drive (AWD)
- Android infotainment system
- Applications on the rear of the vehicle in high-gloss black
- Leather-look dashboard and door trim with contrasting stitching
- Electrically foldable exterior mirrors
- Exterior mirrors and rear window heated (automatic)
- Fastening system for carrier bags in the luggage compartment
- Condensation sensor for automatic activation of the defroster function
- Brake energy recovery
- Headlining and door pillars in nubuck textile
- Roof rails in high-gloss black (integrated)
- Digital Services including Google Maps navigation system
- Driver Assistance
- Parking aid, front and rear
- Electronic differential lock
- Advanced air purification system with fine dust filtration according to air quality standard PM2.5
- Automatic brake
- Luggage compartment partition net
- Belt height adjustment front and rear (2nd row of seats)
- Automatic tailgate
- Rear window, heated
- Interior and exterior mirrors automatically dimming
- ISOFIX mount for the outer rear seats
- Keyless start
- Automatic climate control with 4-zone temperature control
- Headrests (7)
- Loading box under the load compartment floor
- Charging cable Schuko/Type 2 (Mode 2)
- Steering wheel adjustable for height and length
- Steering wheel: Multifunction buttons on the steering wheel
- Front center armrest including cup holder
- Gasoline particulate filter
- Package: Seat Comfort Package
- Parking brake (electric)
- Pollen filter
- Radio accessories: Two USB-C interfaces on the back of the tunnel console
- Run-off Road Protection
- Safety Assistance (Ultimate)
- Power steering, speed-dependent
- Seats: Third row (7-seater)
- Seats: Child seat integrated in the middle rear seat (2nd row)
- Seats: Heated rear seats (outer seats of the 2nd row)



- Seats: Rear seat bench of the 2nd row in 40/20/40 ratio or completely foldable
- Seats: Heated front seats
- Sport exterior mirrors in high-gloss black
- Sport front grille with horizontal struts and surround in high-gloss black
- Power socket
- Textile floor mat for the 3rd row of seats
- First aid kit and warning triangle
- Lashing eyes in the luggage compartment (foldable)
- Warning tone/indicator when seat belts are not fastened (for all seats)

Extra equipment

- Trailer hitch (semi-electric)
- Paintwork: metallic paint
- Nappa leather/man-made leather comfort seats RC20
- Parking camera with 360° surround view (including front, side and rear parking sensors with automatic braking intervention (rear))
- Wheels: 22" 5-twin-spoke alloy wheels, sport design, diamond cut/ high-gloss black (275/35 R22 tires; 9 x 22" rims)
- Seats: Massage function for driver and passenger seats
- Glazing: Acoustic glazing for the side windows (UV and burglar-resistant laminated glass panes)
- Glazing: Side and rear windows tinted (from B-pillar)

- Sun blinds for the rear side windows (integrated)
- Sport front and rear apron
- Auxiliary heater with timer (electric)
- Start/Stop technology
- Phone: Inductive smartphone charging system
- Premium textile floor mats front and rear
- Glazing: Color glazing
- Preparation for Trailer Stability Control (TSA)
- Immobiliser
- Central locking with two radio remote controls and integrated emergency keys

- Chassis: Adaptive air suspension with Four-C technology ((Continuously Controlled Chassis Concept) with adjustable modes Comfort, Eco, Dynamic, Off Road including automatic level control and entry/rear lowering (4/5 cm))
- Radio: Premium Sound audio system by Bowers & Wilkins (1,410 watts of power - 19 speakers - 15 channels - Double-layer (aluminum) Nautilus tweeter - Continuum cone midrange driver - Carbon/cellulose cone woofer - Fresh Air - Mica cone subwoofer - Dirac Unison - Sound optimization - Room modes (Studio, Individual Stage, Jazz Club, Gothenburg Concert Hall))

Brief expert findings

Documents submitted	At the time of the inspection, the registration certificate Part 2 (letter) was available, but the registration certificate Part 1 (certificate) was not. (Copy)
VIN comparison	The vehicle identification number (VIN) was read from the vehicle and its conformity with the submitted documents was verified during the inspection by the undersigned.
Inspection	The inspection conditions were sufficient for the assessment of the vehicle. Lifting equipment and a pit were available for examining the vehicle.
Test drive	No test drive/maneuvering was carried out during the inspection of the vehicle.
Engine function test	An engine test run was performed.

Value reducing factors

No.	Component group	Description
1	Door - rear left side	Door - Scratch(es) - Smart repair
2	Body	B-pillar - right side - Scratch(es) - Smart repair
3	Interior	Interior (Rauchgeruch) - Odour - Ozone treatment
4	Trim / covers	Door trim - front right side - Scratch(es) - Smart repair
5	Door - front right side	Door (Innen) - dent(s) - Smooth repair work
6	Wheel / tyres	Tyre - front right side (nicht fahbereit) - Damaged - Replace
7	Side panel - rear right side	Side panel - Scratch(es) - Paint
8	Wheel / tyres	Alloy rim - front left side - Scratched - Loss in value
9	Rear bumper	Rear bumper - Dent / paintcoat damage - Repair and paint
10	Door - rear right side	Door - Dent / paintcoat damage - Repair and paint



No.	Component group	Description
11	Wheel / tyres	Alloy rim - front right side - Scratched - Loss in value
12	Wheel / tyres	Alloy rim - rear right side (Materialabtrag) - Scratched - Loss in value
13	Door - front right side	Door - Scratch(es) - Paint
14	Mudguard - left side	Mudguard - left side - Dent / paintcoat damage - Replace
15	Vehicle glazing	Windscreen - Broken / torn - repair according to calculation

Wear and tear

No.	Component group	Description
1	Body	Body (Waschstraßenkratzer) - Scratch(es) - No deduction
2	Wheel / tyres	Alloy rim - rear left side - Scratch(es) - No deduction
3	Bonnet	Bonnet - Scratch(es) - No deduction

The vehicle shows signs of wear commensurate with its age and use.

Previous damages

No.	Previous damage	Extent of damage (Net)
1	Rear, Provided by user / customer, from 18 Sept 2023	3.475,05 €
2	Front, Provided by user / customer	

Repainting

No.	Repainting
1	Boot lid / rear door, Professionally carried out, Invoice of repair done Non-existent

Paint coat thickness measurement

Boot lid / rear door	185 µm
----------------------	--------

Order/Scope of order

The order was placed to prepare a sales report for the vehicle described. This includes the following:

- Description of core relevant information about the vehicle
- Documentation of equipment features
(Delivery by third-party service providers)
- Documentation of damage, defects, missing parts
- Documentation of previous damage, unrepaired previous damage, repainting
- a brief visual or functional inspection of the equipment details if possible.
(Functional tests of driver assistance systems are not included in the scope of services!)
- a photo documentation of the vehicle



Basis for the order

This product is based on the Alphabet Fuhrpark GmbH guidelines for vehicle returns and valuations. The expert makes the explicit findings in each individual case objectively within the framework of the specified standards based on his or her own expertise.

The vehicle inspection takes place in a disassembled state.

Damage or defects that can only be detected during disassembly/diagnosis work or through advanced knowledge remain within the scope of the prognosis risk. An extended risk exists for concealed defects caused by fraudulent deception and not identifiable by the expert.

Damage or defects resulting from normal use or wear and tear of the vehicle will be accepted according to the applicable standard.

There was no explicit identification or monetary consideration of the expected features within the product.

Features which in their nature and severity slightly exceed normal use but do not constitute unacceptable damage will be documented and identified under signs of use if necessary.

Damage or defects which, according to the underlying standard, can no longer be attributed to normal use or wear and tear are listed in the product under "Depreciating Factors".

Depending on the product specification, a monetary ID can be provided. If this takes place, the costs can be 100% d or pro rata depending on the vehicle's age and mileage.

Previous damages

According to available information previous damages were repaired at the vehicle. Traces of repairs, which allow conclusions about the area of repair, were not recognizable during the inspection.

Comments

Der beiliegende Radsatz gehört nicht zur Ausstattung.



Figure 1: Diagonal front (left)



Figure 2: Diagonal front (right)



Figure 3: Diagonal rear (left)



Figure 4: Diagonal rear (right)



Figure 5: Interior - front



Figure 6: Interior - rear



Figure 7: Instrument cluster



Figure 8: Instrument panel



Figure 9: interior 360° view



Figure 10: Cargo area

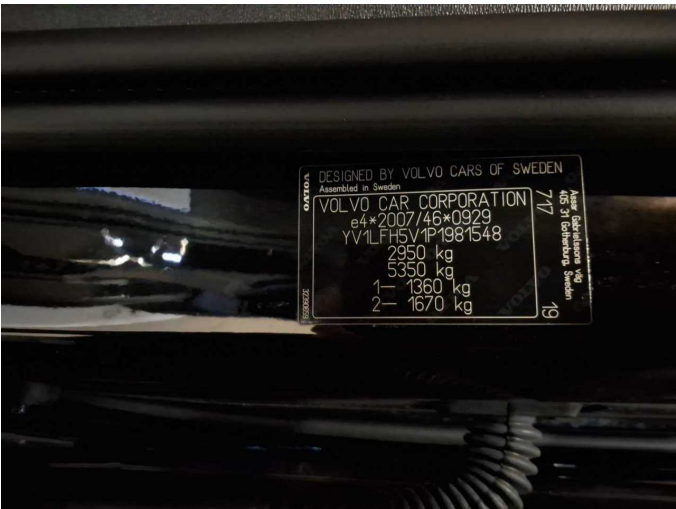


Figure 11: VIN



Figure 12: Mounted tyres

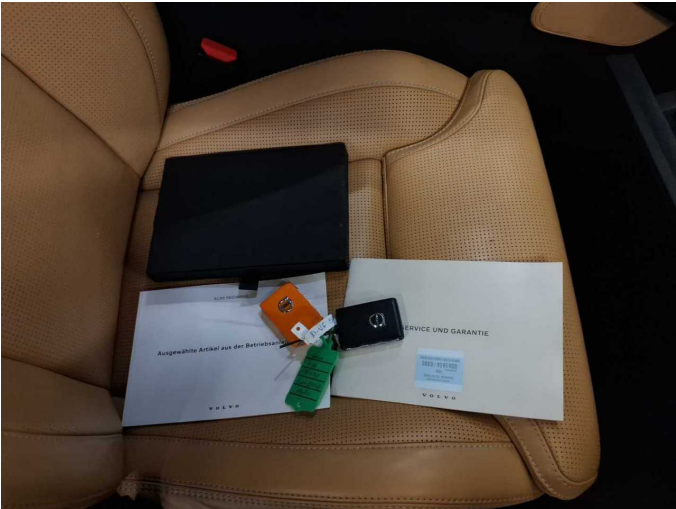


Figure 13: Documents

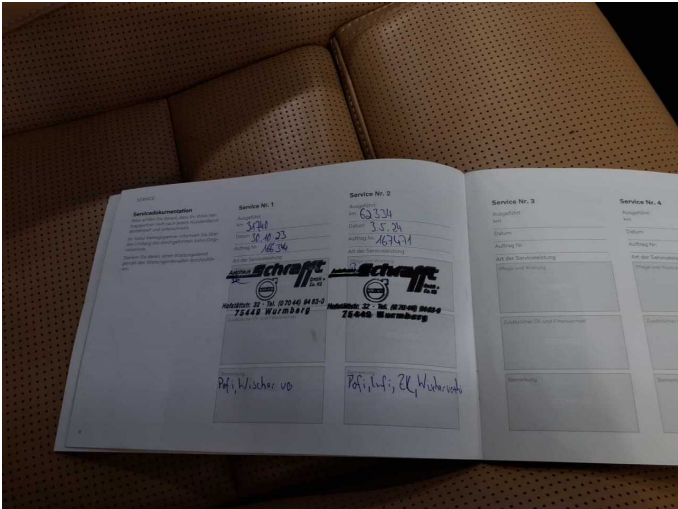


Figure 14: Documents



Figure 15: Additional tyres



Figure 16: Navigation



Figure 17: Misc.



Figure 18: Misc.



Figure 19: Misc.



Figure 20: Misc.



Figure 21: Misc.



Figure 22: Misc.



Figure 23: Misc.



Figure 24: Misc.



Figure 25: Misc.



Figure 26: Misc.



Figure 27: Misc.



Figure 28: Misc.



Figure 29: Misc.

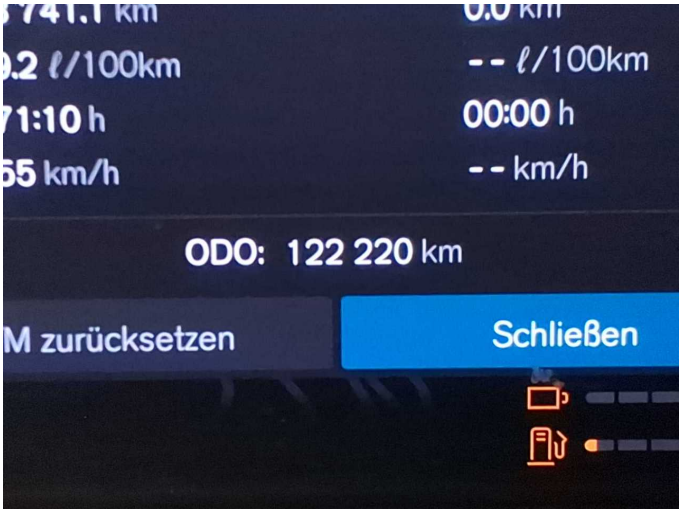


Figure 30: Misc.

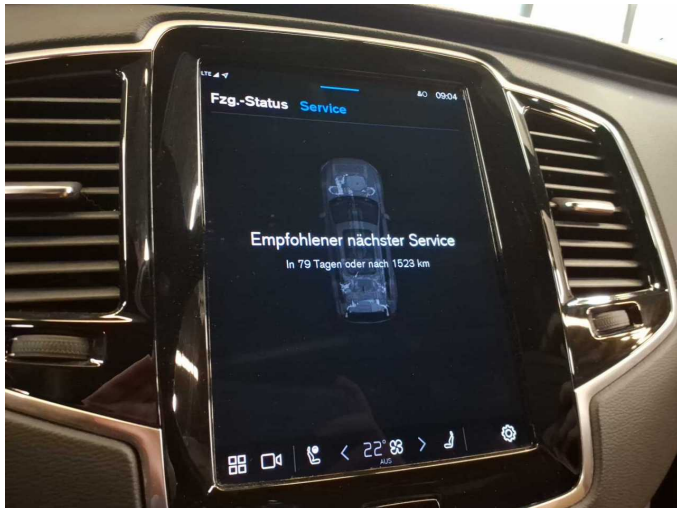


Figure 31: Misc.

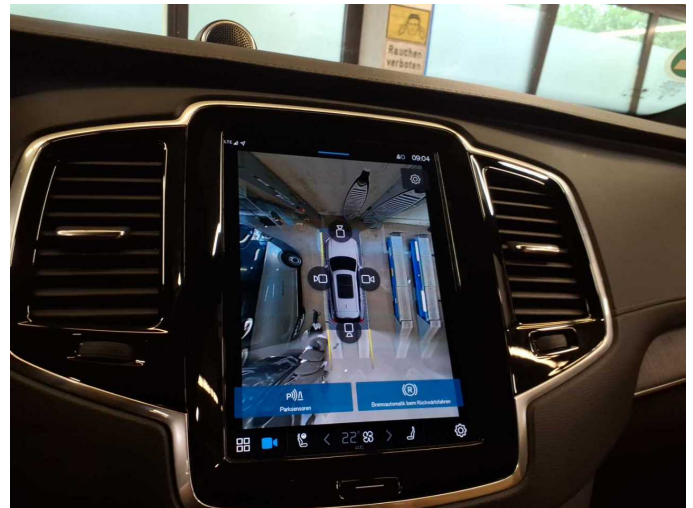


Figure 32: Misc.



Figure 33: Misc.



Figure 34: Misc.



Figure 35: Misc.



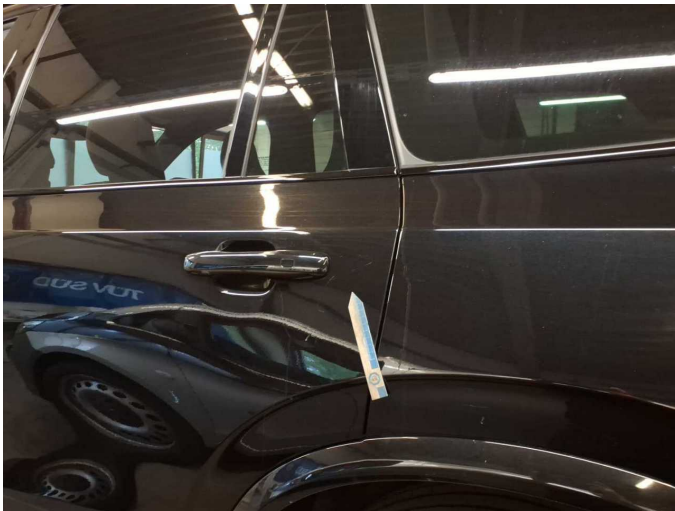
Figure 36: Misc.



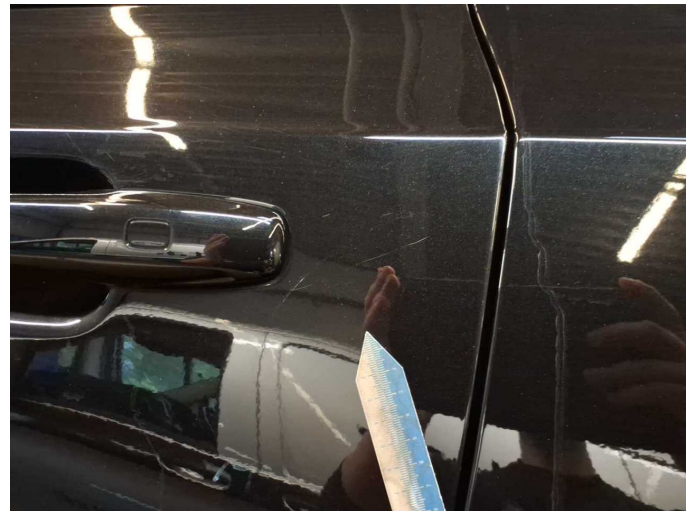
Figure 37: Misc.



Figure 38: Misc.



Damage 1: Door - rear left side: Door - Scratch(es) - Smart repair



Damage 1: Door - rear left side: Door - Scratch(es) - Smart repair



Damage 2: Body: B-pillar - right side - Scratch(es) - Smart repair



Damage 2: Body: B-pillar - right side - Scratch(es) - Smart repair



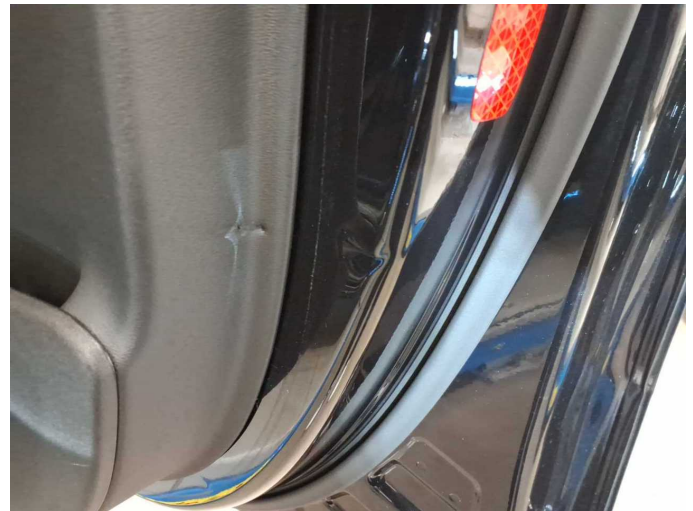
Damage 4: Trim / covers: Door trim - front right side - Scratch(es) - Smart repair



Damage 4: Trim / covers: Door trim - front right side - Scratch(es) - Smart repair



Damage 5: Door - front right side: Door (Innen) - dent(s) - Smooth repair work



Damage 5: Door - front right side: Door (Innen) - dent(s) - Smooth repair work



Damage 6: Wheel / tyres: Tyre - front right side (nicht fahrbereit) - Damaged - Replace



Damage 6: Wheel / tyres: Tyre - front right side (nicht fahrbereit) - Damaged - Replace



Damage 7: Side panel - rear right side: Side panel - Scratch(es) - Paint



Damage 7: Side panel - rear right side: Side panel - Scratch(es) - Paint



Damage 7: Side panel - rear right side: Side panel - Scratch(es) - Paint



Damage 8: Wheel / tyres: Alloy rim - front left side - Scratched - Loss in value



Damage 8: Wheel / tyres: Alloy rim - front left side - Scratched - Loss in value



Damage 8: Wheel / tyres: Alloy rim - front left side - Scratched - Loss in value



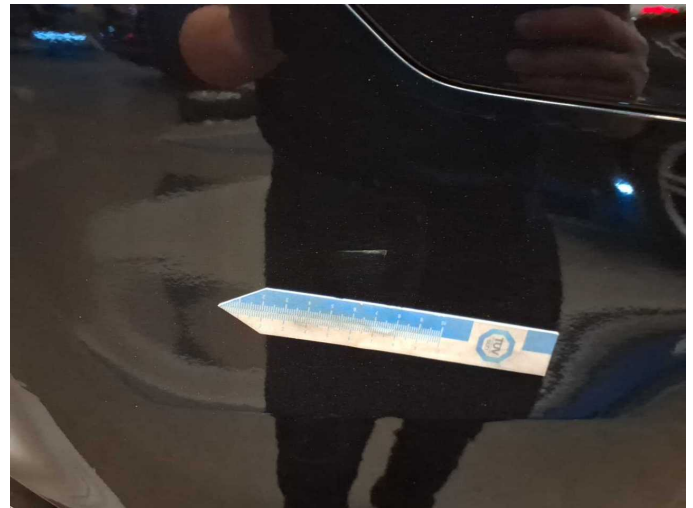
Damage 9: Rear bumper: Rear bumper - Dent / paintcoat damage - Repair and paint



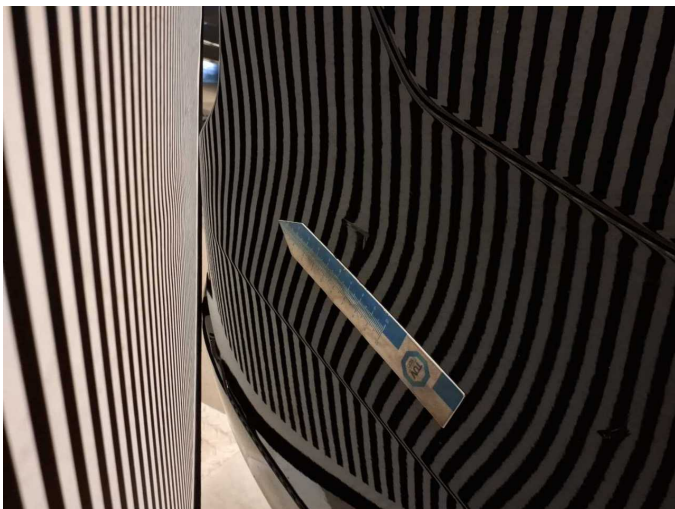
Damage 9: Rear bumper: Rear bumper - Dent / paintcoat damage - Repair and paint



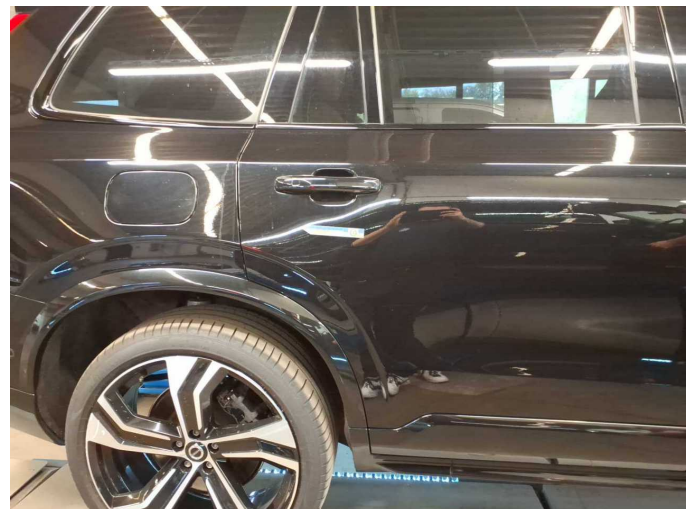
Damage 9: Rear bumper: Rear bumper - Dent / paintcoat damage - Repair and paint



Damage 9: Rear bumper: Rear bumper - Dent / paintcoat damage - Repair and paint



Damage 9: Rear bumper: Rear bumper - Dent / paintcoat damage - Repair and paint



Damage 10: Door - rear right side: Door - Dent / paintcoat damage - Repair and paint



Damage 10: Door - rear right side: Door - Dent / paintcoat damage - Repair and paint



Damage 10: Door - rear right side: Door - Dent / paintcoat damage - Repair and paint



Damage 11: Wheel / tyres: Alloy rim - front right side - Scratched - Loss in value



Damage 11: Wheel / tyres: Alloy rim - front right side - Scratched - Loss in value



Damage 11: Wheel / tyres: Alloy rim - front right side - Scratched - Loss in value



Damage 11: Wheel / tyres: Alloy rim - front right side - Scratched - Loss in value



Damage 12: Wheel / tyres: Alloy rim - rear right side (Materialabtrag) - Scratched - Loss in value



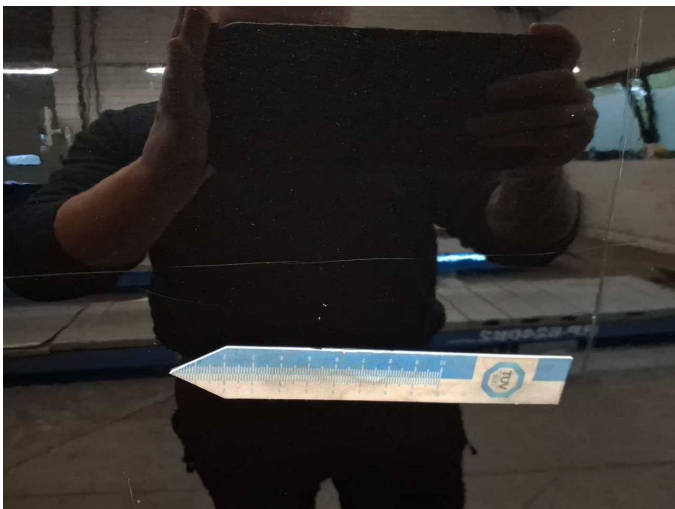
Damage 12: Wheel / tyres: Alloy rim - rear right side (Materialabtrag) - Scratched - Loss in value



Damage 13: Door - front right side: Door - Scratch(es) - Paint



Damage 13: Door - front right side: Door - Scratch(es) - Paint



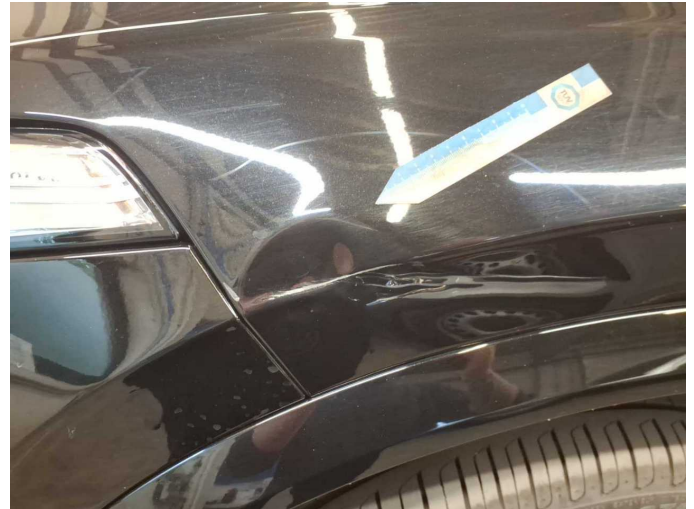
Damage 13: Door - front right side: Door - Scratch(es) - Paint



Damage 13: Door - front right side: Door - Scratch(es) - Paint



Damage 14: Mudguard - left side: Mudguard - left side - Dent / paintcoat damage - Replace



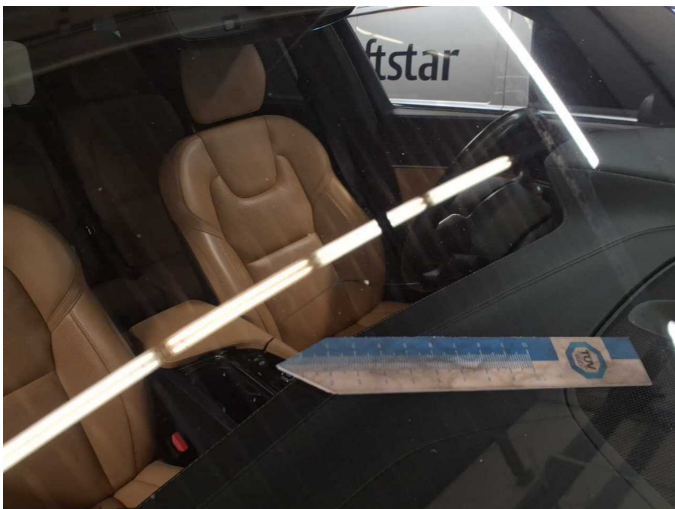
Damage 14: Mudguard - left side: Mudguard - left side - Dent / paintcoat damage - Replace



Damage 14: Mudguard - left side: Mudguard - left side - Dent / paintcoat damage - Replace



Damage 15: Vehicle glazing: Windscreen - Broken / torn - repair according to calculation



Damage 15: Vehicle glazing: Windscreen - Broken / torn - repair according to calculation



Repainting 1: Boot lid / rear door



Repainting 1: Boot lid / rear door



Wartungshistorie

(gemäß Auftraggeber Informationen)

Fahrgestellnummer: YV1LFH5V1P1981548

Hersteller / Modell: VOLVO VOLVO XC90 T8 AWD Recharge Ultimate Dark

Datum	KM-Stand	Beschreibung
05.11.2024	93.750	Motoröl b. Wartung; Ölfilter ern; Regelwartungsdienst; Wartung Sonstiges
03.05.2024	62.341	Luftfiltereinsatz ern; Motoröl b. Wartung; Ölfilter ern; Regelwartungsdienst; Reparatur Sonstiges; Wartung Sonstiges; Zündkerzen ern
30.10.2023	31.747	Motoröl b. Wartung; Ölfilter ern; Regelwartungsdienst; Wartung Sonstiges