



Expertise

Protocol number: 41344421
Order No. / Reference: 25145024
Inspection date: 29 Aug 2025

Manufacturer: Volvo	Model: XC90 T8 AWD Recharge Geartronic RDesign Edition
VIN: YV1LFH5UDN1871861	



Vehicle details	
Manufacturer / Type / Model / Equipment	
Volvo XC90 T8 AWD Recharge Geartronic RDesign Edition	
Vehicle Identification number	YV1LFH5UDN1871861
Mileage (Read)	113,952 km
First registration	17 Jun 2022
Number of holders	1
Next periodical technical inspection	06/2027
(Report on hand)	
Power / Engine displacement	228 kw / 1,969 ccm
Fuel type / Cylinder	Hybr.B/E ext. edition / 4
Gearbox / Number of gears	Automatic / 8
Type of drive	All-wheel drive
Type of vehicle	SUV
Colour / colour code	Crystal Weiß-Perleffekt
Doors / Seats	5 / 7
Upholstery type	Leather
Colour of upholstery	Anthracite-Black



Vehicle details

Maintenance booklet / proof	digital proof / incomplete	Next maintenance in	99 Tag(e)
Last maintenance on / at	12/2024 at 94,430 km		
Key is / should be	2 / 2	FZG documents	ZB#2 (B) was available (copy), ZB#1 (S) was not available
		Letter No.	GJ550502
Previous damage / Accident	None detectable	Repainting	None detectable
Inspection conditions	sufficient	Lifting equipment / pit	yes
Test drive	Not performed	Engine function test	Performed
Manufacturer key number/ type code number	9101 / BUL 00007		
Emission standard	EURO6;WLTP;AP;PI/CI; M, N1 I	Fine dust sticker	
Permitted total weight	2,950 kg	Empty weight	

Tyres

Mounted tyres

#	Tyre size	Type of tyre	Manufacturer	Tread depth
1)	275/45 R20 110V	Winter tyres on Light alloy	Pirelli	6mm / 6mm
2)	275/45 R20 110V	Winter tyres on Light alloy	Pirelli	6mm / 6mm

Additional tyres

#	Tyre size	Type of tyre	Manufacturer	Tread depth
1)	275/35 R22 104Y	Summer tyres on Light alloy	Michelin	6mm / 6mm
2)	275/35 R22 104Y	Summer tyres on Light alloy	Michelin	6 mm
	275/35 R22 104W	Summer tyres on Light alloy	Pirelli	6 mm

Replacement

Typ	Tyre size	Type of tyre	Manufacturer	Tread depth
	Tirefit	Expiration date 04/2026		

Legend: Tread depth information for tires on the left is in the first place, for tires on the right is in the second place on the axle in the direction of travel

Equipment

Standard equipment

- ABS - Anti-lock braking system
- Airbags
- All-wheel drive (AWD)
- Ambient lighting
- Applications on the side windows in high-gloss black
- Armrests with integrated storage compartment and cup holder for the 3rd row of seats (left and right)
- Electrically adjustable exterior mirrors
- Outside temperature display
- Hill Descent Control (HDC)
- Hill Start Assist (HSA)
- Indicators (LED) integrated in exterior mirrors
- On-board computer
- Brake light, third
- CleanZone air quality system with activated carbon filter
- Anthracite headliner
- Roof spoiler
- tachometer
- Driver Alert - Attention Warning
- Parking aid, front and rear
- Electronic differential lock
- Electronic stability control
- Automatic brake
- Luggage compartment partition net
- Transmission: 8-speed Geartronic automatic transmission
- Automatic tailgate
- Rear window wiper
- Interior lighting
- IntelliSafe Assistant
- ISOFIX mount for the outer rear seats
- Keyless start
- Automatic climate control with 4-zone temperature control
- Headrests (7)
- Charging cable Schuko / Type 2 (Mode 2), 4.5 m length
- Load compartment blind (semi-automatic)
- Steering wheel: heated steering wheel
- Steering wheel: Sport leather steering wheel
- Front center armrest including cup holder
- Emergency brake lights
- Parking brake (electric)
- Radio accessories: Smartphone integration Apple CarPlay and Android Auto
- Rain sensor with automatic light function
- Road Edge Detection
- Run-off Road Protection
- Rear view camera
- Heated windscreen washer nozzles
- Airbag, passenger side can be switched off
- Active seat belts with belt tensioners
- Aluminum loading sill protection in the luggage compartment
- Leather-look dashboard and door trim with contrasting stitching
- Electrically foldable exterior mirrors
- Exterior mirrors and rear window heated (automatic)
- Fastening system for carrier bags in the luggage compartment
- Condensation sensor for automatic activation of the defroster function
- Brake energy recovery
- City Safety
- Connected Safety
- Roof rails in high-gloss black (integrated)
- Digital instrumentation
- Drive Mode
- Inlay aluminum inlay metal mesh
- Aluminum door sills with Recharge lettering, front (illuminated) and rear
- Electric windows front and rear
- Bottle holder in the luggage compartment
- Cruise control with speed limit (variable)
- Belt height adjustment front and rear (2nd row of seats)
- Rear window, heated
- Interior and exterior mirrors automatically dimming
- Intelligent driver information system
- IntelliSafe Surround
- Keyless Drive
- Parental controls
- Air conditioning for the 3rd row of seats
- Headrests of the 2nd row of seats can be folded down (electrically)
- Steering wheel adjustable for height and length
- Steering wheel: Multifunction buttons on the steering wheel
- Make-up mirrors for driver and passenger, illuminated
- Sensus navigation system
- Oncoming Lane Mitigation
- Pollen filter
- Radio accessories: Two USB-C interfaces on the back of the tunnel console
- Tire pressure monitoring system
- Road Sign Information (RSI) - Traffic Sign Recognition
- Wheels: Tire sealant
- Rear seat backrests can be folded down 60/40 or completely
- Whiplash Protection System (WHIPS)
- Power steering, speed-dependent
- Seats: Leg rest adjustable (electrically) for driver and passenger seat
- Seats: Driver and passenger seats electrically adjustable



- Headlight cleaning system
- Sensus Connect infotainment system
- Safety braking system with disc brakes all around (internally ventilated)
- Seats: Third row (7-seater)
- Seats: Driver and passenger seats height adjustable (electrically)
- Seats: Heated front seats
- Sport exterior mirrors in high-gloss black
- Sport front grille with horizontal struts and surround in high-gloss black
- Storage compartment under the load floor
- subwoofer
- Textile floor mats
- Glazing: Color glazing
- Full-LED headlight "Thor's Hammer" ACTIVE HIGH BEAM
- Preparation for Trailer Stability Control (TSA)
- Immobiliser
- Central locking with two radio remote controls and integrated emergency keys

Extra equipment

- Trailer hitch (semi-electric)
- Head-up display: Graphic display of driving information in the windscreen
- Child safety lock for the rear doors (electric)
- Paint finish: Inscription pearl effect
- Package: Xenium Package (Panorama glass sunroof with lift function and integrated, continuously adjustable sunshade (electric) - Sun blinds for the rear side windows (integrated) - High Performance Sound Pro audio system by Harman/Kardon: - 600 watts of power - 14 speakers - Fresh Air subwoofer - Dirac Unison sound optimization - Advanced air quality system with fine dust filtration according to air quality standard PM2.5)
- Upholstery: Nappa leather sports seats (perforated front seat side bolsters) (including rear center armrest)
- Wheels: 22" 20-spoke alloy wheels (with 275/35 R 22 tires - 9 x 22" rims)
- Seats: Child seat integrated in the middle rear seat (2nd row)
- Phone: Inductive smartphone charging system (charges smartphones that support the Qi standard wirelessly on a charging surface)
- Glazing: Side and rear windows tinted (from B-pillar)

- Seats: Lumbar support (4-way electrically adjustable) for driver and front passenger seat
- Sun blinds for the rear side windows (integrated)
- Sport front and rear apron
- Sports pedals
- Start/Stop technology
- Power socket
- Textile floor mat for the 3rd row of seats
- First aid kit and warning triangle
- Lashing eyes in the luggage compartment (foldable)
- Volvo On Call with Wi-Fi hotspot
- Warning tone/indicator when seat belts are not fastened (for all seats)

- Chassis: Adaptive air suspension with Four-C technology ((Continuously Controlled Chassis Concept) with adjustable modes Comfort, Eco, Dynamic, Off Road including automatic level control and entry/rear lowering (4/5 cm))
- Park Assist Pilot (Intelligent parking assistant for parking spaces parallel and perpendicular to the direction of travel (left and right), as well as for exiting parallel parking spaces. The steering angle is controlled by the assistant, while starting and braking are controlled by the driver. The parking space must be at least 1.2 times the length of the vehicle. - Front and rear parking aid)
- Parking camera with 360° surround view
- Radio: Sensus Connect infotainment system with Premium Sound by Harman Kardon (9" touchscreen (22.9 cm diagonal) - 600 watts of power - 14 speakers - Fresh Air subwoofer - USB port (compatible with Apple iPod/iPhone/iPad) - Bluetooth hands-free system including audio streaming - Internet access including internet radio and apps (via paired smartphone) - Voice control - Digital vehicle manual - Connected Service Booking)
- Glazing: Acoustic glazing for the side windows (UV and burglar-resistant laminated glass panes)



Brief expert findings

Documents submitted	At the time of the inspection, the registration certificate Part 2 (letter) was available, but the registration certificate Part 1 (certificate) was not. (Copy)
VIN comparison	The vehicle identification number (VIN) was read from the vehicle and its conformity with the submitted documents was verified during the inspection by the undersigned.
Inspection	The inspection conditions were sufficient for the assessment of the vehicle. Lifting equipment and a pit were available for examining the vehicle.
Test drive	No test drive/maneuvering was carried out during the inspection of the vehicle.
Engine function test	An engine test run was performed.

Value reducing factors

No.	Component group	Description
1	Trim / covers	Floor mats (VL) - Holes - Replace
2	Instrument panel	Indicator light (Reifendruck) - on - Perform diagnosis
3	Mudguard - right side	Wheel arch - Scratch(es) - Smart repair
4	Side panel - rear right side	Wheel arch - Scratch(es) - Smart repair
5	Front bumper	Front bumper (Zierleiste) - Deformed - Replace

Wear and tear

No.	Component group	Description
1	Vehicle glazing	Windscreen - Stone chips - No deduction

The vehicle shows signs of wear commensurate with its age and use.

Order/Scope of order

The order was placed to prepare a sales report for the vehicle described. This includes the following:

- Description of core relevant information about the vehicle
- Documentation of equipment features
(*Delivery by third-party service providers*)
- Documentation of damage, defects, missing parts
- Documentation of previous damage, unrepaired previous damage, repainting
- a brief visual or functional inspection of the equipment details if possible.
(*Functional tests of driver assistance systems are not included in the scope of services!*)
- a photo documentation of the vehicle



Basis for the order

This product is based on the Alphabet Fuhrpark GmbH guidelines for vehicle returns and valuations. The expert makes the explicit findings in each individual case objectively within the framework of the specified standards based on his or her own expertise.

The vehicle inspection takes place in a disassembled state.

Damage or defects that can only be detected during disassembly/diagnosis work or through advanced knowledge remain within the scope of the prognosis risk. An extended risk exists for concealed defects caused by fraudulent deception and not identifiable by the expert.

Damage or defects resulting from normal use or wear and tear of the vehicle will be accepted according to the applicable standard.

There was no explicit identification or monetary consideration of the expected features within the product.

Features which in their nature and severity slightly exceed normal use but do not constitute unacceptable damage will be documented and identified under signs of use if necessary.

Damage or defects which, according to the underlying standard, can no longer be attributed to normal use or wear and tear are listed in the product under "Depreciating Factors".

Depending on the product specification, a monetary ID can be provided. If this takes place, the costs can be 100% d or pro rata depending on the vehicle's age and mileage.

Previous damages

Apparently, no repaired previous damage could be found on the vehicle.

Comments

- Der montierte Radsatz gehört nicht zur Ausstattung und wurde nicht in der Bewertung berücksichtigt.



Figure 1: Diagonal front (left)



Figure 2: Diagonal front (right)



Figure 3: Diagonal rear (left)



Figure 4: Diagonal rear (right)



Figure 5: Interior - front



Figure 6: Interior - rear



Figure 7: Instrument cluster



Figure 8: Instrument panel



Figure 9: interior 360° view

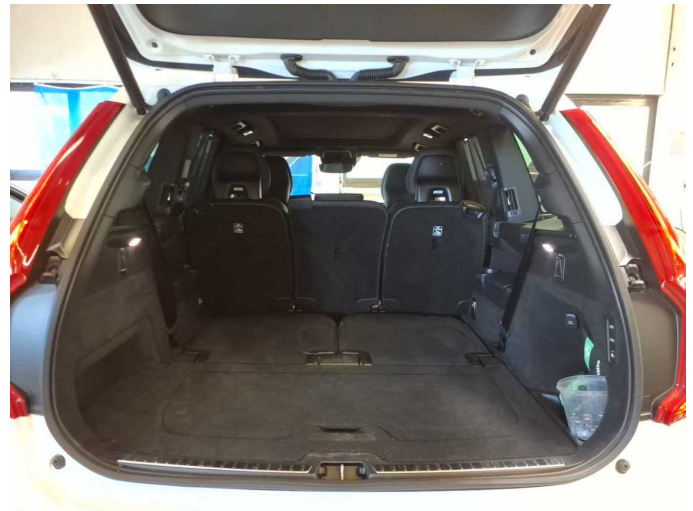


Figure 10: Cargo area

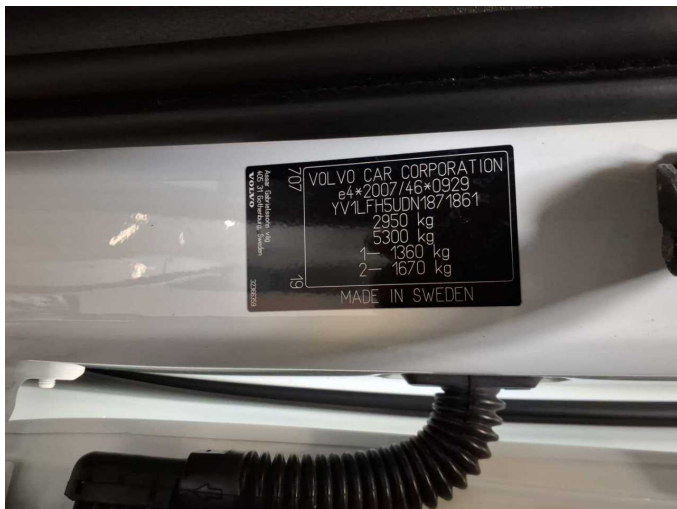


Figure 11: VIN



Figure 12: Mounted tyres

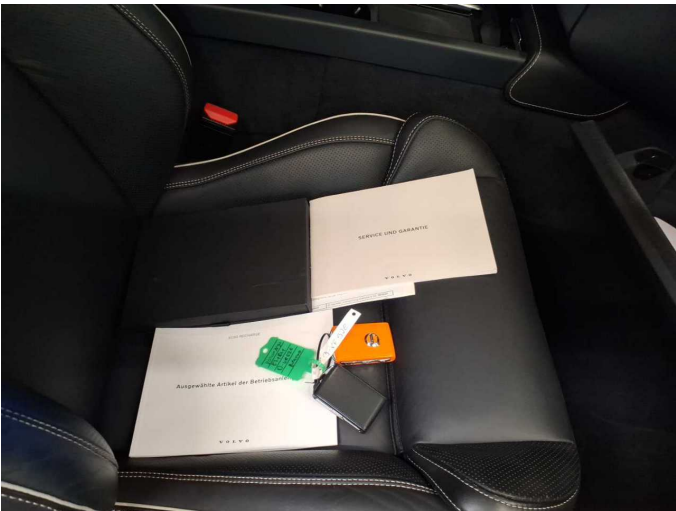


Figure 13: Documents



Figure 14: Documents



Figure 15: Documents

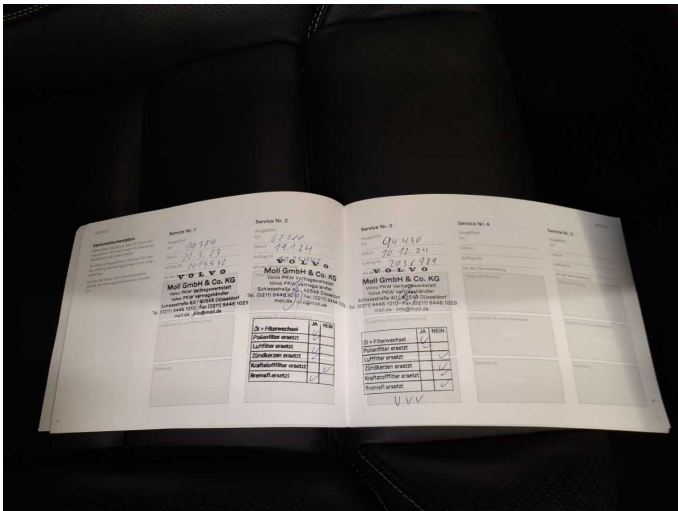


Figure 16: Documents



Figure 17: Documents



Figure 18: Additional tyres



Figure 19: Additional tyres



Figure 20: Navigation



Figure 21: Misc.



Figure 22: Misc.



Figure 23: Misc.



Figure 24: Misc.



Figure 25: Misc.



Figure 26: Misc.



Figure 27: Misc.



Figure 28: Misc.



Figure 29: Misc.



Figure 30: Misc.



Figure 31: Misc.



Figure 32: Misc.



Figure 33: Misc.



Figure 34: Misc.



Figure 35: Misc.

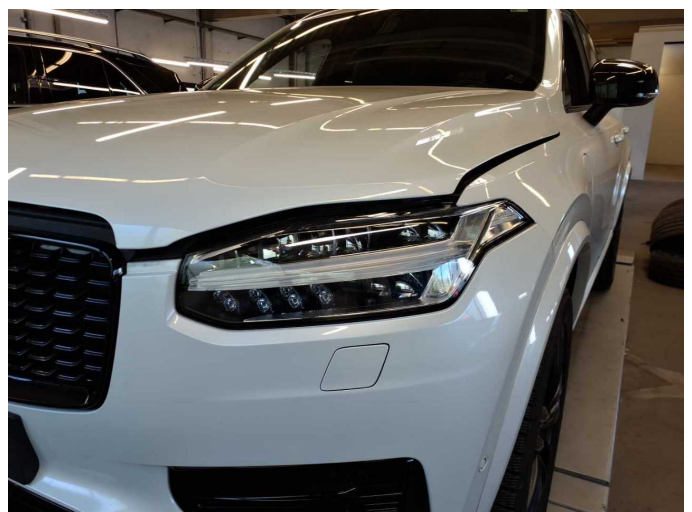


Figure 36: Misc.



Figure 37: Misc.



Figure 38: Misc.



Figure 39: Misc.



Damage 1: Trim / covers: Floor mats (VL) - Holes - Replace



Damage 2: Instrument panel: Indicator light (Reifendruck) - on - Perform diagnosis



Damage 3: Mudguard - right side: Wheel arch - Scratch(es) - Smart repair



Damage 3: Mudguard - right side: Wheel arch - Scratch(es) - Smart repair



Damage 3: Mudguard - right side: Wheel arch - Scratch(es) - Smart repair



Damage 4: Side panel - rear right side: Wheel arch - Scratch(es) - Smart repair



Damage 4: Side panel - rear right side: Wheel arch - Scratch(es) - Smart repair



Damage 5: Front bumper: Front bumper (Zierleiste) - Deformed - Replace



Damage 5: Front bumper: Front bumper (Zierleiste) - Deformed - Replace



Damage 5: Front bumper: Front bumper (Zierleiste) - Deformed - Replace



Damage 5: Front bumper: Front bumper (Zierleiste) - Deformed - Replace



Wartungshistorie

(gemäß Auftraggeber Informationen)

Fahrgestellnummer: YV1LFH5UDN1871861

Hersteller / Modell: VOLVO VOLVO XC90 T8 AWD Recharge Geartronic RDesign
Edition

Datum	KM-Stand	Beschreibung
30.06.2025	112.805	AU
11.12.2024	94.430	Motoröl b. Wartung; Ölfilter ern; Regelwartungsdienst; Wartung Sonstiges
19.01.2024	62.220	Luftfiltereinsatz ern; Motoröl b. Wartung; Ölfilter ern; Regelwartungsdienst; Reparatur Sonstiges; Wartung Sonstiges; Zündkerzen ern
22.03.2023	29.379	Motoröl b. Wartung; Ölfilter ern; Regelwartungsdienst; Wartung Sonstiges