

Expertise

Protocol number: 38963180
Order No. / Reference: 24509410
Inspection date: 12 Mar 2025

Manufacturer: Volvo

Model: XC90 B5 D AWD Geartronic RDesign

VIN: YV1LCK2UCL1624314



Vehicle details

Manufacturer / Type / Model / Equipment

Volvo XC90 B5 D AWD Geartronic RDesign

Vehicle Identification number YV1LCK2UCL1624314

Mileage (Read) 101,693 km

First registration 22 Jun 2020

Number of holders 1

Power / Engine displacement 173 kw / 1,969 ccm

Fuel type / Cylinder Hybrid Diesel / E / 4

Gearbox / Number of gears Automatic / 8

Type of drive All-wheel drive

Type of vehicle SUV

Colour / colour code Onyx Schwarz-Metallic

Doors / Seats 5 / 5

Upholstery type Leather

Colour of upholstery Anthracite-Black

driving readiness Not roadworthy /
moveable



Equipment

Standard equipment

- ABS - anti-lock braking system
- Airbag, passenger side can be switched off
- airbag, knee airbag for driver
- Active seat belts with belt tensioners (for all passengers)
- all-wheel drive (AWD)
- Dashboard and door trim in leather look with contrast stitching
- Exterior mirrors electrically adjustable, foldable and heated
- fastening system for carrying bags in the luggage compartment
- Condensation sensor for automatic activation of the defroster function
- Brake energy recovery
- brake lights, adaptive
- CleanZone air quality system with activated carbon filter
- headliner in anthracite
- Roof spoiler
- Digital Instrumentation
- Drive Mode (driving mode settings for engine, transmission, steering, brakes and chassis)
- Electronic differential lock
- Electronic Stability Control
- Window frame in high-gloss black
- luggage compartment partition net
- Transmission: 8-speed Geartronic automatic transmission
- automatic tailgate
- rear window wiper with interval function
- interior lighting
- IntelliSafe Assistant
- ISOFIX mount for the outer rear seats
- Keyless Start
- Automatic climate control with separate temperature control for driver and passenger side
- front headrests
- LED fog lights with cornering lights
- steering wheel adjustable in height and length
- Steering wheel: Multifunction buttons on the steering wheel
- Make-up mirror for driver and passenger, illuminated
- model and engine emblem on the rear
- Oncoming Lane Mitigation
- parking brake (electric)
- Upholstery: Nubuck textile/nappa leather, sports seats
- Radio accessories: Smartphone integration Apple CarPlay and Android Auto
- Rain sensor
- tire pressure monitoring system
- Road Sign Information (RSI) - Traffic Sign Recognition
- Wheels: Alloy wheels 20" 5-spoke Sport Design Diamond Cut/Black
- Sensus Connect infotainment system
- Airbag driver and passenger side with two-stage trigger system
- Airbag, side airbags for driver and front passenger and head/shoulder airbags (IC) for all occupants
- Ambient lighting
- attention warning
- exhaust system with two chrome-plated tailpipes
- Outside temperature display
- Hill Descent Control HDC
- Hill Start Assist (HSA)
- Indicators (LED) integrated in exterior mirrors
- On-board computer
- Brake light, third
- City Safety
- Connected Safety
- roof rails in high-gloss black (integrated)
- Diesel particulate filter
- Tachometer
- parking aid, rear
- Aluminium door sills with Volvo lettering at the front (illuminated) and rear
- Electric windows front and rear
- automatic brake
- Cruise control system
- Belt height adjustment front and rear (2nd row of seats)
- rear window, heated
- interior and exterior mirrors automatically dimming
- Intelligent Driver Information System
- IntelliSafe-Surround
- Keyless Drive
- Parental controls
- Headrests of the 2nd row of seats can be folded down (electrically)
- load compartment blind (semi-automatic)
- LED headlights "Thor's Hammer" with high beam assistant and integrated LED daytime running lights
- Steering wheel: Sport leather steering wheel
- front center armrest including cup holder
- Sensus navigation system
- Package: Winter Package
- pollen filter
- Radio: Sensus Connect infotainment system with high-performance sound
- Radio accessories: Two USB-C interfaces on the back of the tunnel console
- Road Edge Detection
- Run-off Road Protection
- Wheels: Tire sealant



- Power steering, speed dependent
- Seats: Leg rest adjustable (electrically) for driver and passenger seat
- Seats: Driver and passenger seats electrically adjustable
- Sun blinds for the rear side windows (integrated)
- Sport front and rear apron
- sports exterior mirrors in high-gloss black
- sports pedals
- Power socket
- Glazing: Color glazing
- Volvo On Call with Wi-Fi hotspot
- Immobiliser
- Central locking with two radio remote controls and integrated emergency key

- Rear seat bench of the 2nd row of seats in 40/20/40 ratio or completely foldable
- Safety braking system with disc brakes all around (internally ventilated)
- Seats: Electrically adjustable driver's seat (8-way)
- Seats: Lumbar support (4-way electrically adjustable) for driver and front passenger seat
- Sport front grille with horizontal struts and surround in high-gloss black
- start/stop technology
- first aid kit and warning triangle
- lashing eyes in the luggage compartment (foldable)
- Preparation for Trailer Stability Control (TSA)
- WHIPS whiplash protection system

Extra equipment

- Alarm system (with motion/tilt sensor, security lock and private locking (separate glove compartment and trunk lock))
- Glazing: Side and rear windows darkened (from B-pillar)
- Package: Parking Assistance Package (front and rear parking sensors - rear view camera)
- Paintwork: Metallic paint
- parking camera with 360° surround view

- Package: Light package (LED fog lights (integrated in the front spoiler) - headlight cleaning system - full LED headlights "Thor's Hammer" Active High Beam with extended high beam, dynamic cornering light, intelligent high beam assist with adaptive headlight range control and integrated LED daytime running lights - ambient lighting - (multi-colored) front and rear; on the doors - exit lights in the rear doors - footwell lighting at the rear - illuminated cup holders at the front - work light on the luggage compartment lid)

Brief expert findings

Documents submitted	At the time of the inspection, the registration certificate part 2 (letter) was available, but the registration certificate part 1 (certificate) was not available. (Copy)
VIN comparison	The vehicle identification number (VIN) was read and its conformity with the documents submitted was established during the inspection by the undersigned.
Inspection	A proper visual inspection of the paintwork and the bodywork was only possible to a limited extent due to insufficient lighting conditions/wetness or dirt. At the time of the inspection, the condition could not be ensured for an adequate assessment. The expert therefore recommends a further inspection to reduce the prognosis risk. There were no lifting devices or pits available to examine the vehicle. For this reason, inspection of the underside of the vehicle was only possible to a limited extent.
Test drive	The conduction of a test drive with the described vehicle was impossible to do under the given conditions.
Engine function test	An engine test run could not be performed.
driving readiness	At the time of the inspection, the vehicle was not drivable under its own power, but can be moved under its own power with the aid of aids.

Value reducing factors

No.	Component group	Description
1	Equipment	Tirefit filler - Expired - Replace
2	Rear bumper	Rear bumper - Scratched - Smart repair
3	Bonnet	Insulation lining - Damage caused by marten / rodent - Replace
4	Engine	Engine - Defective - Replace

Wear and tear



No.	Component group	Description
1	Body	Body (oberflächlich) - Scratch(es) - No deduction
2	Boot lid / rear door	Boot lid (Kratzer) - dent(s) - No deduction
3	Vehicle glazing	Windscreen - Stone chips - No deduction
4	Front bumper	Front bumper (Steinschlag) - Scratched - No deduction
5	Bonnet	Bonnet (Kratzer) - Stone chips - No deduction

The vehicle shows signs of wear consistent with its age and use.

Missing parts

Description

Equipment - Vehicle key
Wheel / tyres - Wheelset - complete

Previous damages

No.	Previous damage	Extent of damage (Net)
1	Side right, Provided by user / customer, from 13 Nov 2021	3.488,76 €

Repainting

No. Repainting

- 1 Roof rail - right side, Professionally carried out, Invoice of repair done Non-existent
- 2 Mudguard - right side, Professionally carried out, Invoice of repair done Non-existent
- 3 Side panel - rear right side, Professionally carried out, Invoice of repair done Non-existent
- 4 Door - rear right side, Professionally carried out, Invoice of repair done Non-existent

Paint coat thickness measurement

Roof rail - right side	168 µm	Mudguard - right side	156 µm
Side panel - rear right side	159 µm	Door - rear right side	166 µm

order/scope of the order

The order was placed to prepare a sales report on the vehicle described. This includes the following:

- Description of core relevant information about the vehicle
- Documentation of equipment features
(delivery by third-party service providers)
- Documentation of damage, defects, missing parts
- Documentation of previous damage, unrepaired previous damage, repainting
- a brief visual or functional inspection of the equipment details if possible.
(Functional tests of driver assistance systems are not included in the scope of services!)
- a photo documentation of the vehicle



Basis for the order

The basis of this product is the guideline for vehicle returns and assessments of Alphabet Fuhrpark GmbH. The expert makes the explicit findings in individual cases objectively within the framework of the specified standards based on his own expertise.

The vehicle inspection takes place in a non-disassembled condition.

Damage or defects that can only be identified during disassembly/diagnosis work or through advanced knowledge remain within the scope of the prognosis risk. An increased risk exists due to concealed defects that were caused by fraudulent deception and were not identifiable by the expert.

Damage or defects resulting from normal use or wear and tear of the vehicle will be accepted according to the applicable standard.

There was no explicit identification or monetary consideration of the expected features within the product.

Features which in their nature and severity slightly exceed normal use but do not constitute unacceptable damage will be documented and identified under signs of use if necessary.

Damage or defects which, according to the underlying standard, can no longer be attributed to normal use or wear and tear, are listed in the product under value-reducing factors.

Depending on the product specification, a monetary ID can be provided. If this takes place, the costs can be 100% d or pro rata depending on the vehicle's age and mileage.

Previous damages

According to available information previous damages were repaired at the vehicle. Traces of repairs, which allow conclusions about the area of repair, were not recognizable during the inspection.

Comments

- Der verbaute Winterradsatz ist nicht Bestandteil der vorliegenden Fahrzeugausstattung.

- Das Fahrzeug ist rollfähig, lässt sich aber nicht starten. Der Motorlauf, sowie alle Komfort- und Sicherheitssysteme konnten nicht geprüft werden. Von nachträglich entstehenden Mehrkosten muss ausgegangen werden.



Figure 1: Diagonal front (left)



Figure 2: Diagonal front (right)



Figure 3: Diagonal rear (left)



Figure 4: Diagonal rear (right)



Figure 5: Interior - front



Figure 6: Interior - rear



Figure 7: Instrument cluster



Figure 8: Instrument panel



Figure 9: interior 360° view ([Online Link](#))



Figure 10: Cargo area



Figure 11: VIN



Figure 12: Mounted tyres



Figure 13: Documents

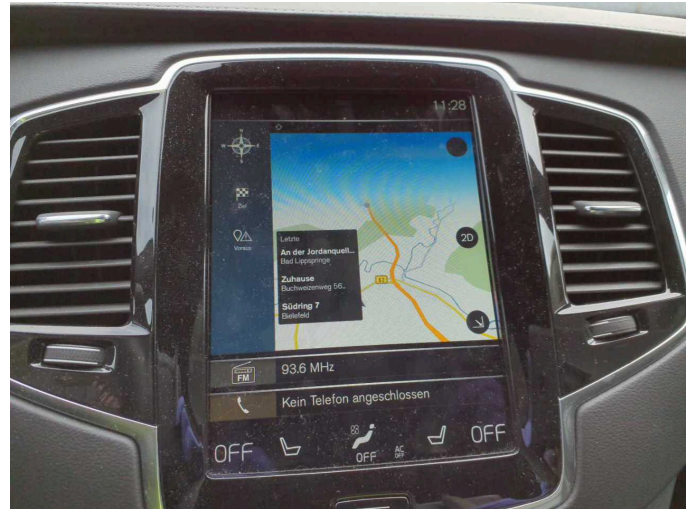


Figure 14: Navigation



Figure 15: Misc.

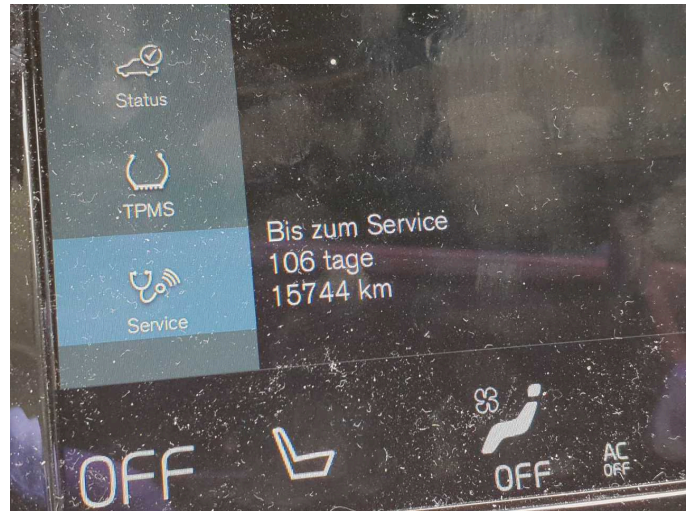


Figure 16: Misc.



Figure 17: Misc.



Figure 18: Misc.



Figure 19: Misc.



Figure 20: Misc.



Figure 21: Misc.



Figure 22: Misc.

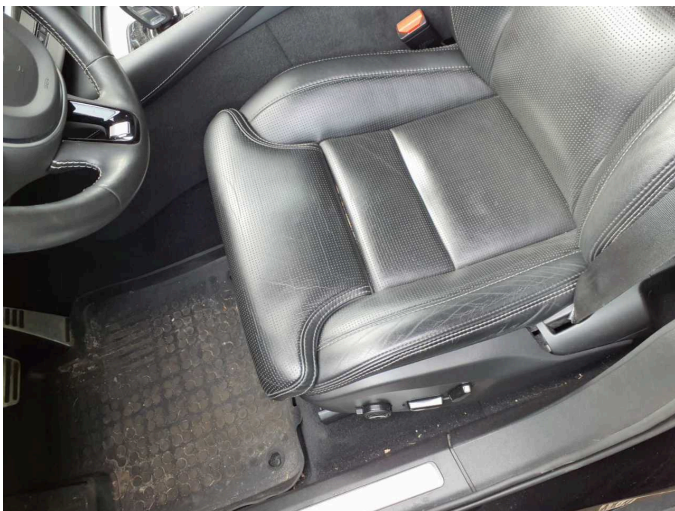


Figure 23: Misc.

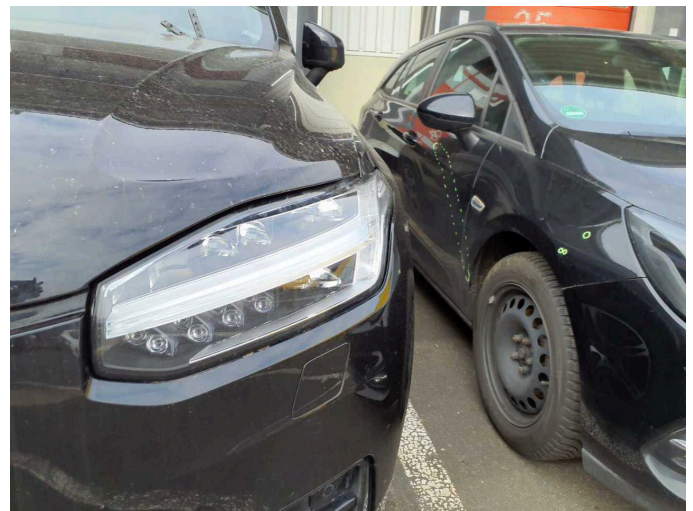


Figure 24: Misc.



Figure 25: Misc.



Figure 26: Misc.



Figure 27: Misc.



Figure 28: Misc.



Figure 29: Misc.



Figure 30: Misc.



Figure 31: Misc.



Damage 1: Equipment: Tirefit filler - Expired - Replace



Damage 2: Rear bumper: Rear bumper - Scratched - Smart repair



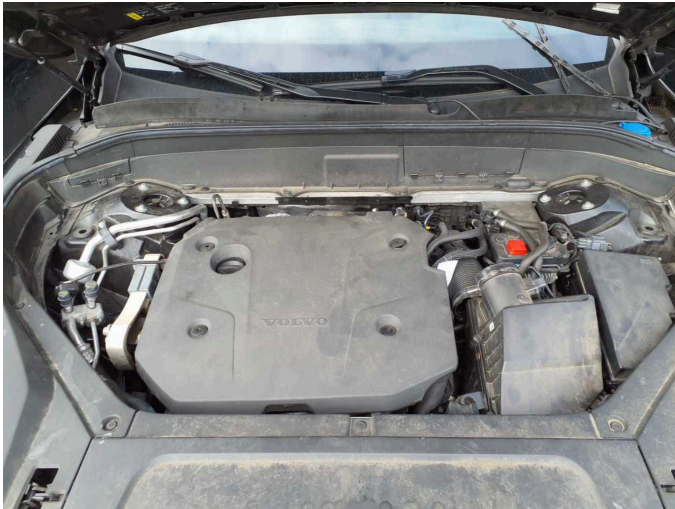
Damage 2: Rear bumper: Rear bumper - Scratched - Smart repair



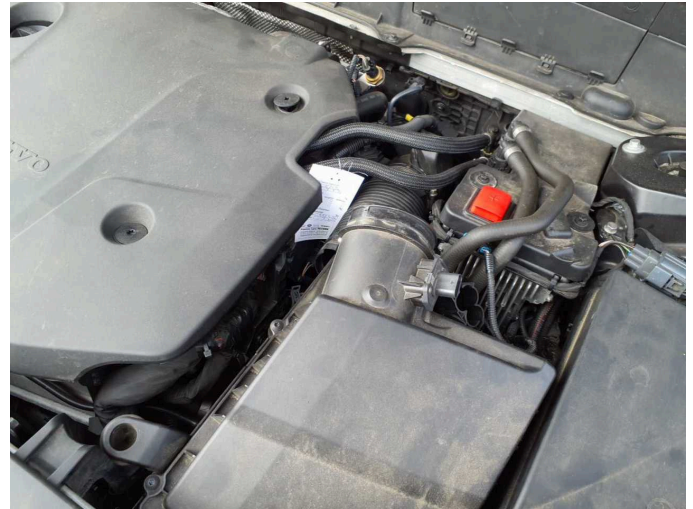
Damage 3: Bonnet: Insulation lining - Damage caused by marten / rodent - Replace



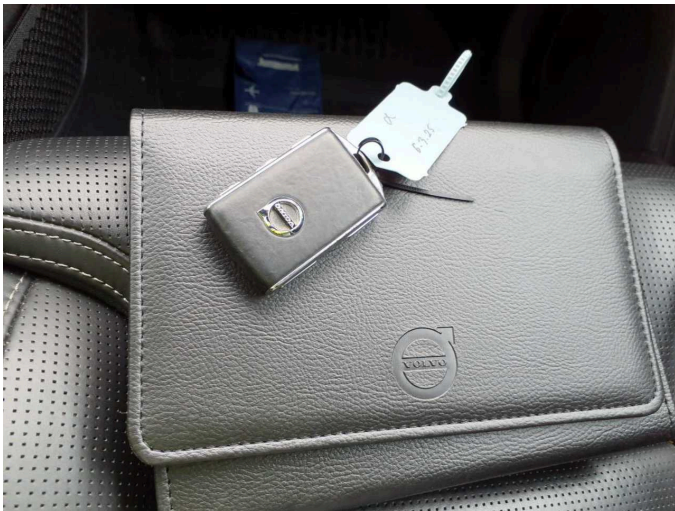
Damage 3: Bonnet: Insulation lining - Damage caused by marten / rodent - Replace



Damage 4: Engine: Engine - Defective - Replace



Damage 4: Engine: Engine - Defective - Replace



Missing part 1: Equipment: Vehicle key - Missing - Replace



Missing part 2: Wheel / tyres: Wheelset - complete - Missing - Replace



Missing part 2: Wheel / tyres: Wheelset - complete - Missing - Replace



Missing part 2: Wheel / tyres: Wheelset - complete - Missing - Replace



Repainting 1: Roof rail - right side



Repainting 1: Roof rail - right side



Repainting 2: Mudguard - right side



Repainting 2: Mudguard - right side



Repainting 3: Side panel - rear right side



Repainting 3: Side panel - rear right side



Repainting 4: Door - rear right side



Repainting 4: Door - rear right side