



VOLVO XC60

XC60 T5 Geartronic

VIN NO YV1DZ40LDH2199385
Registration Number LDH2199385



MOT Date	Number of Owners	Number of Keys	Odometer Reading
-	1	2	139974 km
Last Service	Last Service Mileage	First Registration Date	Country First Registered
-	-	2017-07-18	-

Inspection Report Summary

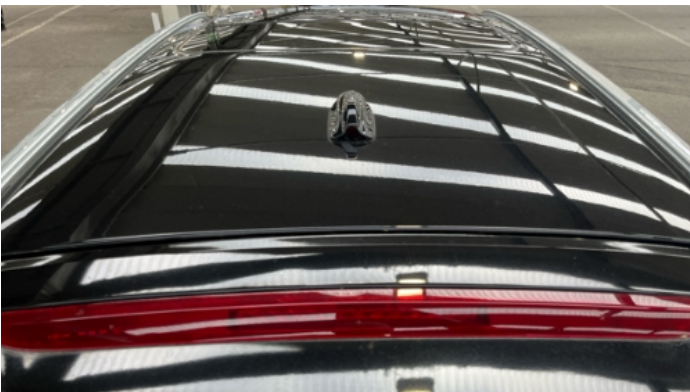
Customer	BCA Online	Report Number	P20250423113823
Inspection Date / Place	2025-04-23 / BCA Neuss	Cosmetic Grade	4

Vehicle Summary

Vehicle Condition	Runner	VAT Type	Margin
Fuel Type	Petrol	Gearbox Type	Automatic
Colour	Black	Engine Size (cc)	1969
Engine Size	2.0	No of Doors	5
Body Type	SUV	Drive Train	Front
Seat Colour		No of Seats	5
Seat Covering Name	Schwarz	Seat Covering	Synthetic Leather
Charging Cables		NEDC CO2 Rating (q/km)	157

Vehicle History & Documents

Service Book Available	Missing	Next Service Mileage	km
Previous Usage		Imported	
Manufacturer Warrenty			







Equipment

Tinted Glass	USB Socket	Alloys wheels	Auxiliary Socket
Cruise control	Headlamp wash/wipe	Remote central locking	Roof rails
Sunroof	CD Player	Electrically folding wing mirrors	Leather steering wheel
Rear parking sensors	Tow ball	Airbag Status	Anti-lock braking
Bluetooth telephone interface	Front parking sensors	Remote adjusting wing mirrors	Reversing Camera
Satellite navigation	Xenon headlamps	Electrically adjustable seats	Electrictailgate
Radio			

Equipment Details

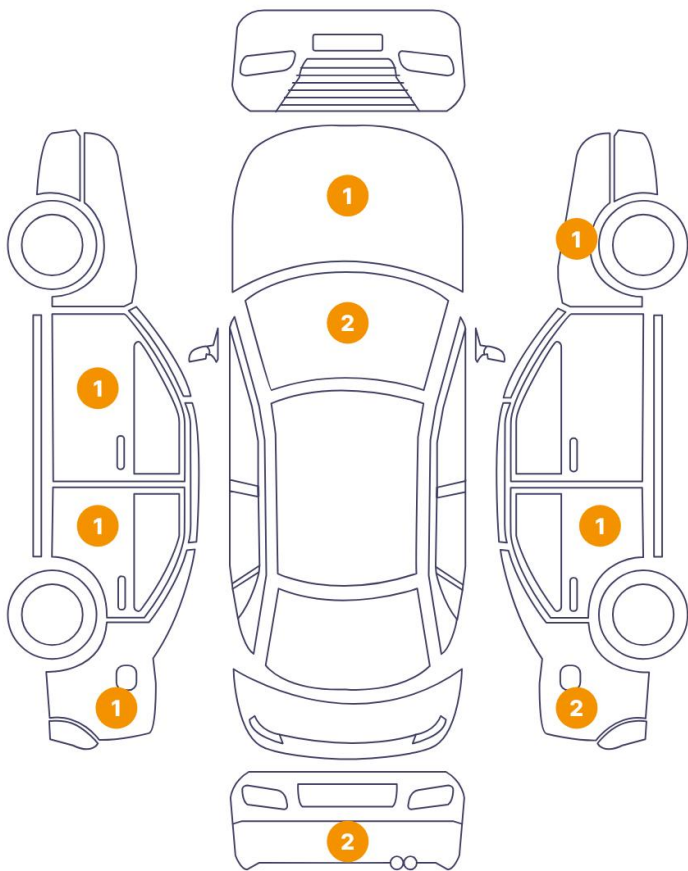
Tow Ball Type	Detachable	Air Conditioning	Dual Zone Climate Control
Alloy Wheel Size	18	Seat Heating	Front
Sunroof Type	Opening Panoramic		

Wheels & Tyres

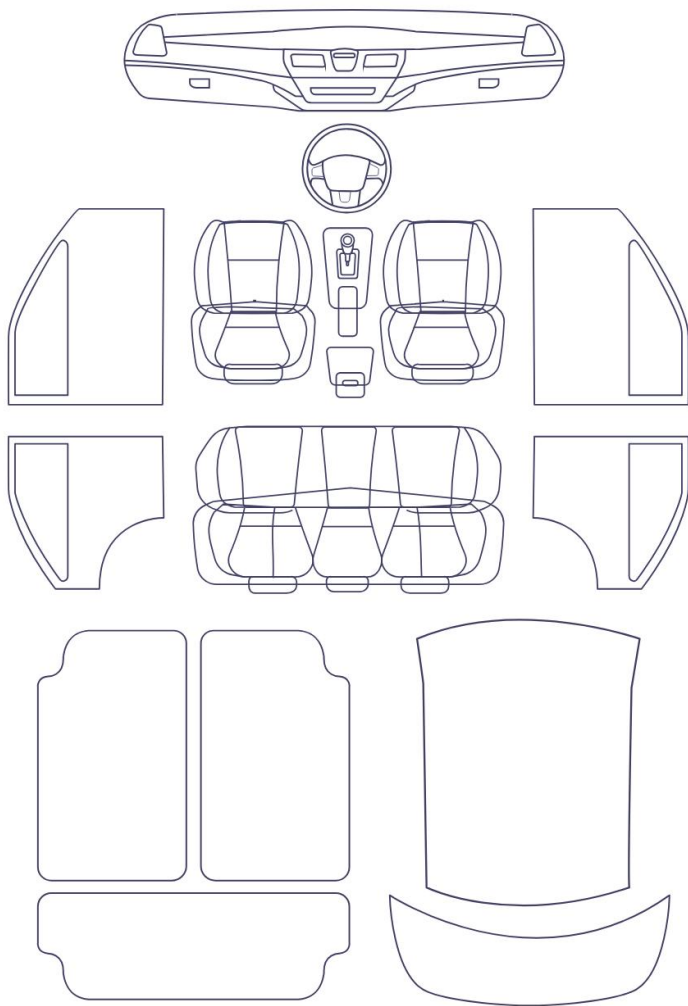
Right Front Tyre Depth	7	Left Front Tyre Depth	7
Right Rear Tyre Depth	8	Left Rear Tyre Depth	8

Cosmetic Damage

12 Damages



0 Damages



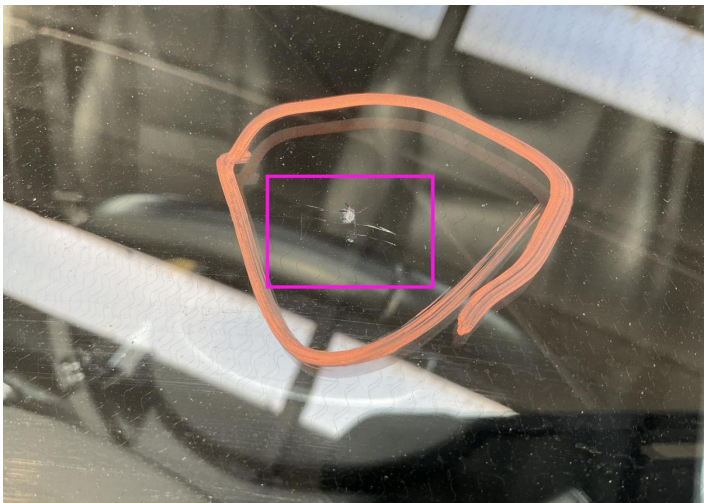
Component		Damage	Comments
1	Pillar / Back Right	Paint / Scratch / Scuff	
2	Windshield / Front	Glass Break / Impact	
3	Windshield / Front	Paint / Chipping	
4	Hood	Paint / Stone Chip	
5	Door / Front Left	Bodywork / Dent / Dent	
6	Door / Back Left	Paint / Scratch / Scuff	
7	Side Panel / Back Left	Paint / Scratch / Scuff	
8	Corner Bumper / Back Left	Paint / Scratch / Scuff	
9	Corner Bumper / Back Left	Paint / Scratch / Scuff	
10	Side Panel / Back Right	Bodywork / Dent / Dent	
11	Side Panel / Back Right	Bodywork / Dent / Dent	

12 Fender / Front Right

Paint / Scratch / Scuff



1. Pillar / Back Right
Paint / Scratch / Scuff -



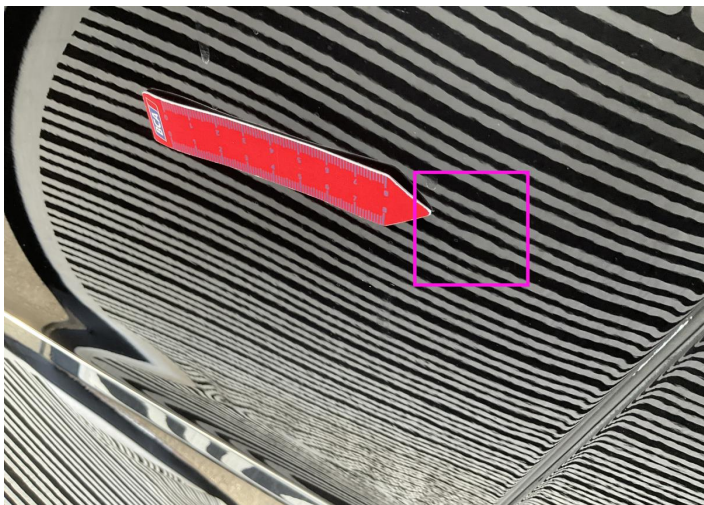
2. Windshield / Front
Glass Break / Impact -



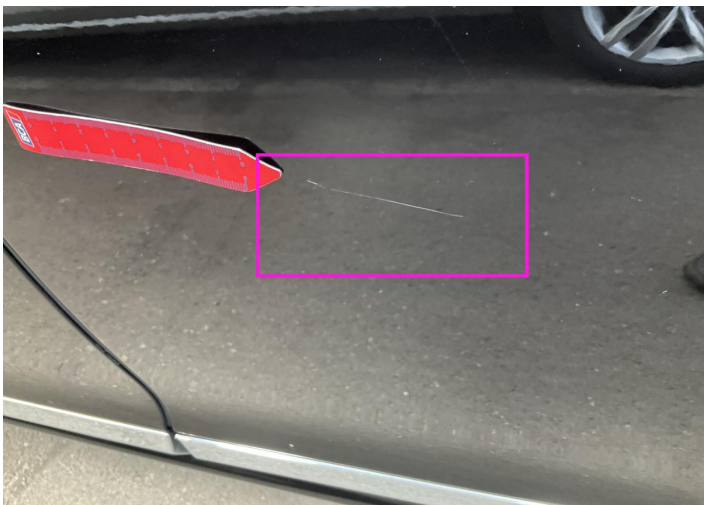
3. Windshield / Front
Paint / Chipping -



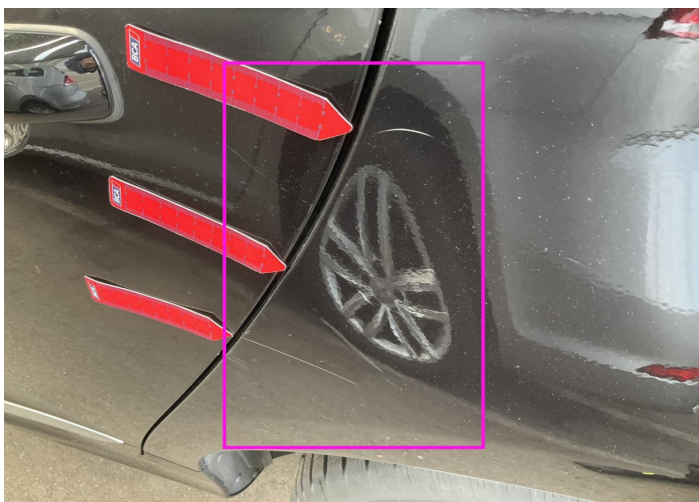
4. Hood
Paint / Stone Chip -



5. Door / Front Left
Bodywork / Dent / Dent -



6. Door / Back Left
Paint / Scratch / Scuff -



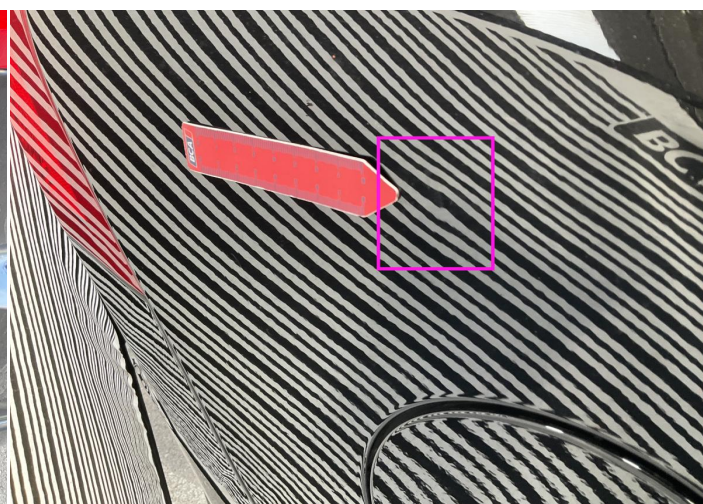
7. Side Panel / Back Left
Paint / Scratch / Scuff -



8. Corner Bumper / Back Left
Paint / Scratch / Scuff -



9. Corner Bumper / Back Left
Paint / Scratch / Scuff -



10. Side Panel / Back Right
Bodywork / Dent / Dent -



11. Side Panel / Back Right
Bodywork / Dent / Dent -



12. Fender / Front Right
Paint / Scratch / Scuff -

Mechanical Condition

Control Lights

ABS Warning Light	✓	Airbag Warning Light	✓
Alternator / Battery	✓	Display Defect	✓
Oil Pressure Warning Light	✓	Brake Warning Light	✓
Power Steering Warning Light	✓	No Dashboard Lights	✓
Tire Pressure Monitoring System	✓		

Equipments Test

Main & Spare Keys Functioning	✓	Electric Windows	✓
Navigation System	✓	Audio Equipment	✓
Parking Sensors / Cameras Functioning	✓	AC / Heating System	✓

Engine

Engine Status / EML	✓	Engine Leak Visible	✓
Engine Starts	✓		

Gearbox

Gear Box	✓
----------	---

Levels

Brakes Fluid	NA	Coolant Fluid	✓
--------------	----	---------------	---

Test Drive Inspection

Brake

Brake System Anomaly ✓

Steering Wheel

Steering | Noise / Anomaly ✓

Engine

Engine Noise ✓ The Gears Scratch / Skip / Abnormal Operation ✓

Fume Quantity ✓ Power Loss ✓

General

Test Driven Status ✓

✓ No troubles detected, good condition or correct tests, according to vehicle age and mileage

! Damages or malfunction detected that requires repairs by the buyer

NA Not applicable

☐ Not tested

Disclaimer

Please also note the "UserGuide condition report", which shows the scope of the vehicle description. [User Guide](#)