



VOLKSWAGEN Golf VIII

Golf Variant 1.5 eTSI OPF DSG

VIN NO WVWZZZCDZNW514202
Registration Number DZNW514202



MOT Date	Number of Owners	Number of Keys	Odometer Reading
2027-01-01	2	2	29740 km
Last Service	Last Service Mileage	First Registration Date	Country First Registered
-	-	2021-12-17	Germany

Inspection Report Summary

Customer	BCA Online	Report Number	P20251009112551
Inspection Date / Place	2025-10-09 / BCA Berlin	Cosmetic Grade	2

Vehicle Summary

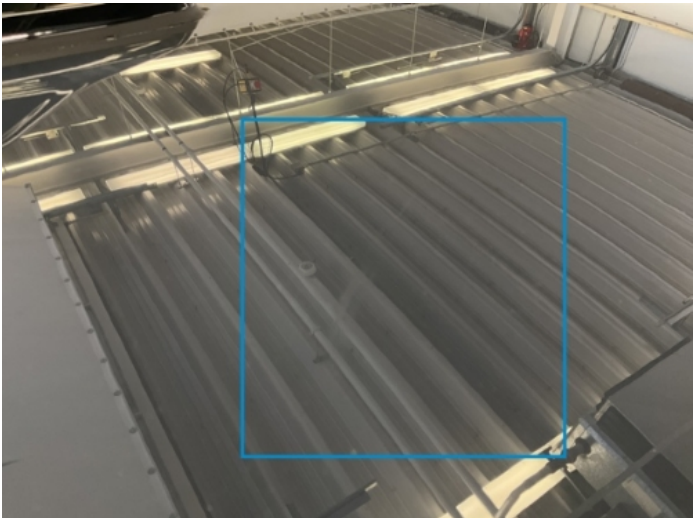
Vehicle Condition	Runner	VAT Type	Margin
Fuel Type	Petrol	Road Worthy	Unknown
Colour	Grey	Engine Size (cc)	1498
Engine Size	1.5	No of Doors	5
Body Type	Stationwagon / Estate	Drive Train	Front
Seat Colour		No of Seats	5
Seat Covering Name	Hellgrau	Seat Covering	Cloth
Charging Cables		WLTP CO2 Emissions	
Gearbox Type	Automatic		

Vehicle History & Documents

Service Book Available	Missing	Next Service Mileage	km
Previous Usage		Imported	No
Manufacturer Warrenty			







Equipment

Tinted Glass	Alloys wheels	Cruise control	Front parking sensors
Remote adjusting wing mirrors	Roof rails	LED Headlamps	Rear parking sensors
Airbag Status	Anti-lock braking	Digitaldashboard	Heated wing mirrors
Remote central locking	Stability control	Radio	

Equipment Details

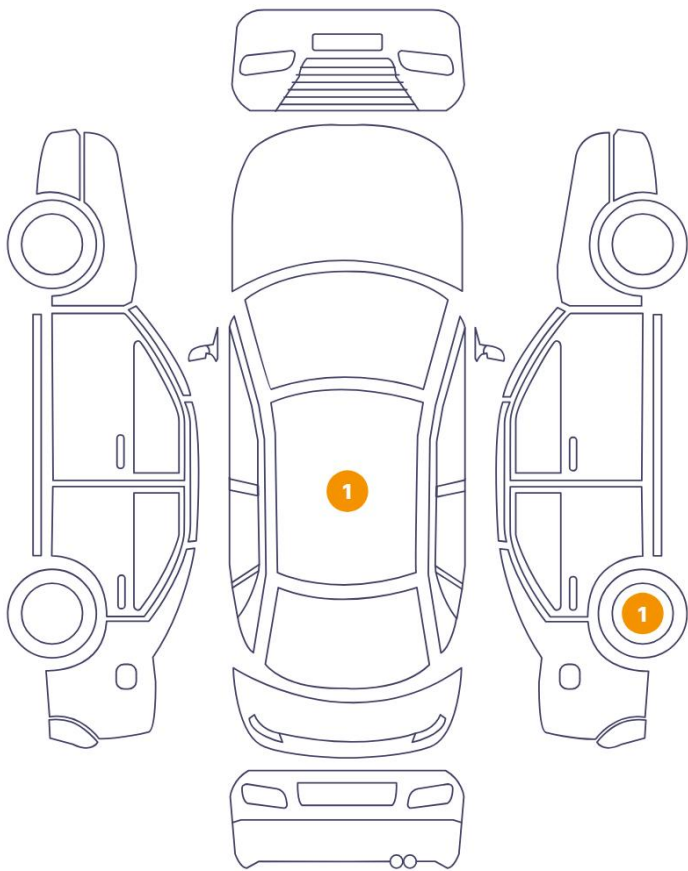
Air Conditioning	Dual Zone Climate Control	Alloy Wheel Size	16
Extra Wheel / Tyre Set	Winter Tyres - Steel	Seat Heating	Front

Wheels & Tyres

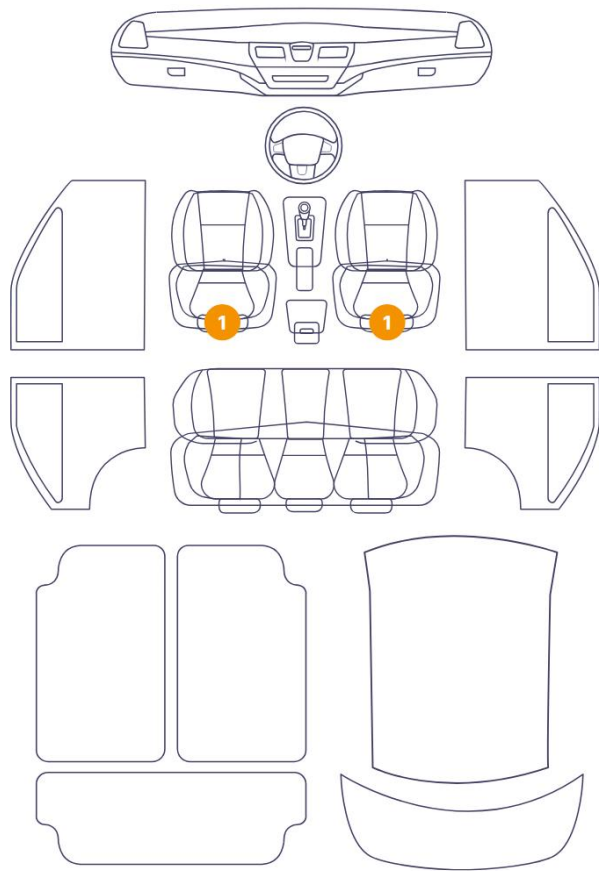
Extra Wheel - 1 Tyre Depth	7	Extra Wheel - 2 Tyre Depth	6
Extra Wheel - 3 Tyre Depth	6	Extra Wheel - 4 Tyre Depth	6
Right Front Tyre Depth	5	Left Front Tyre Depth	5
Right Rear Tyre Depth	6	Left Rear Tyre Depth	6

Cosmetic Damage

2 Schäden



2 Schäden



Component		Damage	Comments
1	Seat / Front Left	Interior / Dirty	
2	Seat / Front Right	Interior / Dirty	
3	Rim / Back Right	Out of Bodywork / Scratch	
4	Roof	Paint / Scratch / Scuff	



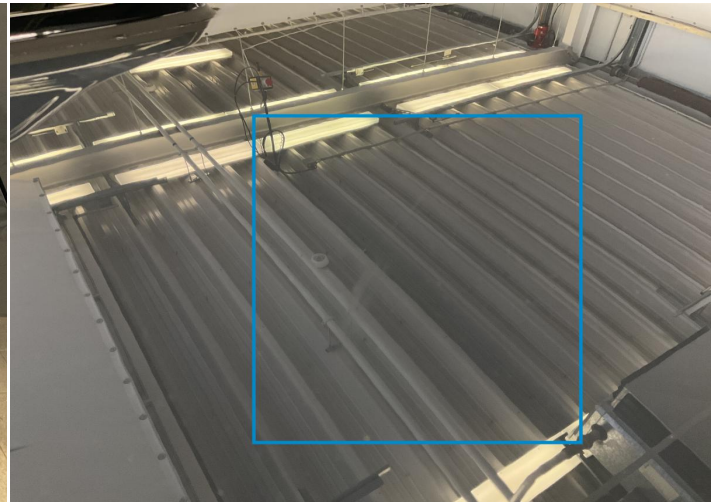
1. Seat / Front Left
Interior / Dirty -



2. Seat / Front Right
Interior / Dirty -



3. Rim / Back Right
Out of Bodywork / Scratch -



4. Roof
Paint / Scratch / Scuff -

Mechanical Condition

Control Lights

ABS Warning Light	✓	ESP Fault/Traction Control Malfunction Light	✓
Airbag Warning Light	✓	Oil Pressure Warning Light	✓
Brake Warning Light	✓	Power Steering Warning Light	✓
Alternator / Battery	✓	No Dashboard Lights	✓
Tire Pressure Monitoring System	✓	Display Defect	✓

Engine

Engine Status / EML	✓	Engine Leak Visible	✓
Engine Starts	✓		

Levels

Brakes Fluid	✓	Coolant Fluid	✓
--------------	---	---------------	---

Equipments Test

Main & Spare Keys Functioning	✓	Electric Windows	✓
Audio Equipment	✓	Parking Sensors / Cameras Functioning	✓
AC / Heating System	✓	Other Equipments	✓

Test Drive Inspection

Engine			
Engine Noise	✓	The Gears Scratch / Skip / Abnormal Operation	✓
Fume Quantity	✓	Power Loss	✓
Brake			
Brake System Anomaly	✓		
Steering Wheel			
Steering Noise / Anomaly	✓		
General			
Test Driven Status	✓		
✓ No troubles detected, good condition or correct tests, according to vehicle age and mileage			
! Damages or malfunction detected that requires repairs by the buyer			
NA Not applicable			
☐ Not tested			

Disclaimer

Please also note the "UserGuide condition report", which shows the scope of the vehicle description.

[User Guide](#)