



Expertise

Protocol number: 41351443
Order No. / Reference: 24907815-1
Inspection date: 2 Sept 2025

Manufacturer: Volkswagen	Model: Golf 2.0 TDI SCR DSG Life
VIN: WVGZZZCDZMW107063	



Vehicle details	
Manufacturer / Type / Model / Equipment	
Volkswagen Golf 2.0 TDI SCR DSG Life	
Vehicle Identification number	WVGZZZCDZMW107063
Mileage (Read)	70,329 km
First registration	27 May 2021
Number of holders	1
Power / Engine displacement	110 kw / 1,968 ccm
Fuel type / Cylinder	Diesel / 4
Gearbox / Number of gears	Automatic transmission / 7
Type of drive	Front drive
Type of vehicle	Saloon car
Colour / colour code	Deep Black Perleffekt (C9X)
Doors / Seats	5 / 5
Upholstery type	Cloth
Colour of upholstery	Black-Anthracite
Vehicle with smoke odor	no



Vehicle details

Maintenance booklet / proof	digital proof / complete	Next maintenance in	11,300 km
Last maintenance on / at	10/2024 at 56,629 km		
Key is / should be	2 / 2	FZG documents	ZB#2 (B) was available (copy), ZB#1 (S) was not available
		Letter No.	GC237164
Previous damage / Accident	Detectable	Repainting	Detectable
Inspection conditions	sufficient	Lifting equipment / pit	yes
Test drive	Not performed	Engine function test	Performed
Manufacturer key number/ type code number	0603 / CNX 00616		
Emission standard	EURO6;WLTP;AP;PI/CI; M, N1 I	Fine dust sticker	
Permitted total weight	1,950 kg	Empty weight	

Tyres

Mounted tyres

#	Tyre size	Type of tyre	Manufacturer	Tread depth
1)	205/55 R16 91H	Winter tyres on Light alloy	Bridgestone	3mm / 3mm
2)	205/55 R16 91H	Winter tyres on Light alloy	Bridgestone	5mm / 5mm

Additional tyres

#	Tyre size	Type of tyre	Manufacturer	Tread depth
1)	205/55 R16 91V	Summer tyres on Light alloy	Nexen	6mm / 6mm
2)	205/55 R16 91V	Summer tyres on Light alloy	Nexen	6mm / 6mm

Replacement

Typ	Tyre size	Type of tyre	Manufacturer	Tread depth
	Tirefit	Expiration date 03/2025		

Legend: Tread depth information for tires on the left is in the first place, for tires on the right is in the second place on the axle in the direction of travel



Equipment

Standard equipment

- Cornering braking function and evasive maneuvering assistance (When turning left, the Golf is automatically braked to a standstill with the cornering assistant (with a simultaneous acoustic and visual warning) if an oncoming vehicle is approaching in the lane to be crossed. Depending on the speed of both vehicles, the cornering assistant can prevent the accident or mitigate its consequences within the system's limits.)
- Electrically adjustable exterior mirrors with memory function (separately heated)
- Brake light, third
- Headlining in Storm Grey
- "Nature Cross Brushed" decorative inlays (for instrument panel and front door panels)
- Diesel particulate filter and SCR catalyst
- Digital Cockpit Pro, multi-colored (various info profiles selectable)
- Parking aid (acoustic warning signals for obstacles in the front and rear areas)
- Electronic parking brake including auto-hold function
- Automatic headlight switching with LED daytime running lights ("Coming home" function and "Leaving home" function)
- Electric windows, front and rear
- Front windscreen in laminated safety glass, heat and sound insulating
- Transmission: 7-speed DSG
- Rear window wiper with interval control
- ISOFIX anchor points (for child seats on the outer rear seats and on the front passenger seat, i-Size compatible)
- Rear headrests (3 pieces)
- Paint finish: Uni
- LED taillights
- Steering wheel: Multifunction leather steering wheel, with shift paddles
- Fatigue detection (detects signs of driver fatigue based on characteristic steering behavior, time of day, and driving duration and issues a visual and acoustic warning)
- Emergency call service (no registration required, service is activated upon delivery)
- Package: Seat Comfort Package (2 USB-C ports in the front, 2 USB-C charging ports on the rear center console; charging capacity up to 45 W; height and length adjustable front center armrest; height adjustable front seats)
- Tire pressure monitoring indicator (passive)
- Wheels: Light alloy wheels (4) "Norfolk" 7 J x 16 (tires 205/55 R 16)
- Wheels: Tire Mobility Set (12-volt compressor and tire sealant)
- Rear seat bench undivided, backrest asymmetrically divided, foldable with center armrest
- Seat belts: Three-point automatic seat belt for the middle rear seat
- Airbag for driver and front passenger (with passenger airbag deactivation)
- Airbag: Head airbag system for front and rear passengers including front side airbags
- Ambient lighting
- App-Connect (selected smartphone apps can be displayed and operated on the radio or navigation system's touchscreen - MirrorLink, Android Auto, Apple CarPlay)
- Exterior mirror housings and door handles in body color
- Vehicle tool kit
- Car2X (Using the WLANp ITS G5 standard, all Car2X-enabled vehicles and traffic systems such as traffic lights can transmit data at high speed without using the cellular network. This works over a distance of around 800 meters—enough to warn of the end of a traffic jam that is not visible.)
- Dual-tone horn
- Electric auxiliary air heater
- Electronic differential lock XDS
- Electronic stabilization program and electromechanical brake booster (anti-lock braking system with brake assist - electronic brake force distribution - traction control - electronic differential lock - engine drag torque control - trailer stabilization)
- Pedestrian protection measures expanded
- Luggage compartment cover
- Rear window heated
- Rear spoiler in body color
- Climatronic air conditioning system (with active combi filter)
- Front headrests (safety-optimized)
- LED reading lights front (2) and 2 rear
- LED headlights
- Dynamic headlight range adjustment
- Make-up mirrors in the sun visors, illuminated
- Non-smoking version (storage compartment and 12 V socket at the front)
- Front Assist emergency braking with pedestrian and cyclist detection (detects critical distance situations to other vehicles and helps shorten the stopping distance – warns the driver visually and acoustically in dangerous situations and with a preventive braking jolt with pedestrian and cyclist detection – also reacts to pedestrians and cyclists)
- Composition radio (21 cm touchscreen, 4+1 speakers, 4 x 20 watt output, FM radio reception, dual phase diversity tuner for optimal radio reception, Radio Data System (RDS), MP3 playback, USB-C interface with Apple compatibility, DAB+ digital radio reception, and telephone interface (hands-free system, Bluetooth audio))
- Keyless start system without safe lock
- Electromechanical power steering (speed-dependent control)



- Seat belts: Three-point automatic seat belts in the front with height adjustment and belt tensioner
- Seats: Comfort seats in the front
- Lane keeping assistant "Lane Assist"
- 12 volt socket in the luggage compartment
- Telephone interface with inductive charging function
- Illuminated door handle recesses
- First aid kit, warning triangle and safety vest
- Warning sound and light for unfastened seat belts at the front and rear
- Electronic immobilizer
- Green thermal insulation glazing, side and rear

- Seat belts: Three-point automatic seat belts for the outer rear seats
- Seat covers in fabric "Maze"
- Seats: Lumbar supports in front
- Start-stop system (with brake energy recovery)
- Bumpers in body color
- Door and side panels foam foil and fabric
- Ambient lighting with logo projection
- Prepared for "We Connect" and "We Connect Plus" (online information is transmitted directly to the car (e.g. navigation with POI search, online traffic information, parking information, etc.))
- Central locking without safe security, with radio remote control and 2 radio folding keys

Extra equipment

- Air Care Climatronic air conditioning system
- Package: Business Premium including navigation system (DSG)
- Finish: pearl effect

Brief expert findings

Documents submitted	At the time of the inspection, the registration certificate Part 2 (letter) was available, but the registration certificate Part 1 (certificate) was not. (Copy)
VIN comparison	The vehicle identification number (VIN) was read from the vehicle and its conformity with the submitted documents was verified during the inspection by the undersigned.
Inspection	The inspection conditions were sufficient for the assessment of the vehicle. Lifting equipment and a pit were available for examining the vehicle.
Test drive	No test drive/maneuvering was carried out during the inspection of the vehicle.
Engine function test	An engine test run was performed.

Value reducing factors

No.	Component group	Description
1	Equipment	Tirefit filler - Expired - Replace
2	Electronic systems	Parking assistance - Paint defect - Repair
3	Boot lid / rear door	Boot lid - Scratched - Smart repair
4	Door - front left side	Door - Scratched - Smart repair
5	2nd wheel set	2 alloy rims - Scratched - Loss in value
6	Front bumper	Front bumper - Scratched - Repair and paint

Wear and tear

No.	Component group	Description
1	Bonnet	Bonnet - Stone chips - No deduction
2	Side panel - rear left side	Side panel - Scratch(es) - No deduction
3	Body	Body - Scratch(es) - No deduction
4	Wheel / tyres	Tyre - front (Nicht im Lieferumfang enthalten) - Does not meet the leasing specifications - No deduction

The vehicle shows signs of wear commensurate with its age and use.



Previous damages

No.	Previous damage	Extent of damage (Net)
1	Unknown, Provided by user / customer, from 10 Aug 2023	126,45 €
2	Unknown, Provided by user / customer, from 18 Oct 2024	216,41 €
3	Side right, Provided by user / customer, from 14 Mar 2025	4.403,19 €

Repainting

No.	Repainting
1	Side panel - rear right side, Door - rear right side, Door - front right side, Professionally carried out, Invoice of repair done Non-existent

Paint coat thickness measurement

Side panel - rear right side	200 µm	Door - rear right side	193 µm
Door - front right side	184 µm		

Order/Scope of order

The order was placed to prepare a sales report for the vehicle described. This includes the following:

- Description of core relevant information about the vehicle
- Documentation of equipment features
(Delivery by third-party service providers)
- Documentation of damage, defects, missing parts
- Documentation of previous damage, unrepaired previous damage, repainting
- a brief visual or functional inspection of the equipment details if possible.
(Functional tests of driver assistance systems are not included in the scope of services!)
- a photo documentation of the vehicle

Basis for the order

This product is based on the Alphabet Fuhrpark GmbH guidelines for vehicle returns and valuations. The expert makes the explicit findings in each individual case objectively within the framework of the specified standards based on his or her own expertise.

The vehicle inspection takes place in a disassembled state.

Damage or defects that can only be detected during disassembly/diagnosis work or through advanced knowledge remain within the scope of the prognosis risk. An extended risk exists for concealed defects caused by fraudulent deception and not identifiable by the expert.

Damage or defects resulting from normal use or wear and tear of the vehicle will be accepted according to the applicable standard.

There was no explicit identification or monetary consideration of the expected features within the product.

Features which in their nature and severity slightly exceed normal use but do not constitute unacceptable damage will be documented and identified under signs of use if necessary.

Damage or defects which, according to the underlying standard, can no longer be attributed to normal use or wear and tear are listed in the product under "Depreciating Factors".

Depending on the product specification, a monetary ID can be provided. If this takes place, the costs can be 100% d or pro rata depending on the vehicle's age and mileage.

Previous damages

According to available information previous damages were repaired at the vehicle. Traces of repairs, which allow conclusions about the area of repair, were not recognizable during the inspection.



Comments

Das Fahrzeug befand sich zum Besichtigungszeitpunkt in beschädigten, nicht demontierten Zustand. Schadenausweitung möglich, Zusatzkosten können entstehen.



Figure 1: Diagonal front (left)



Figure 2: Diagonal front (right)



Figure 3: Diagonal rear (left)



Figure 4: Diagonal rear (right)

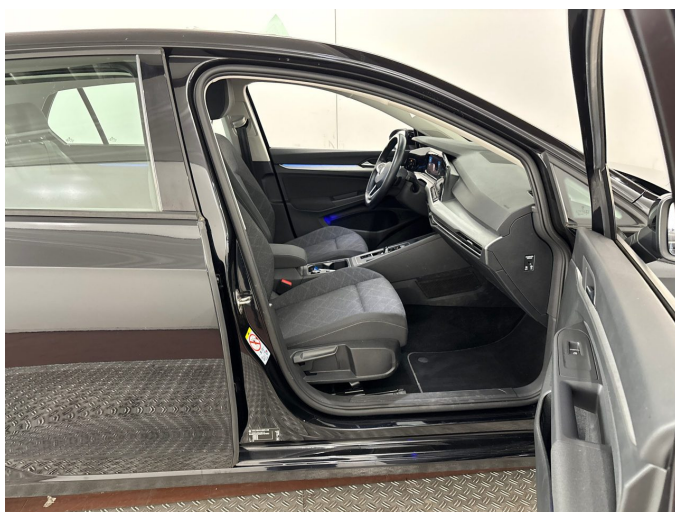


Figure 5: Interior - front



Figure 6: Interior - rear



Figure 7: Instrument cluster



Figure 8: Instrument panel



Figure 9: interior 360° view



Figure 10: Cargo area

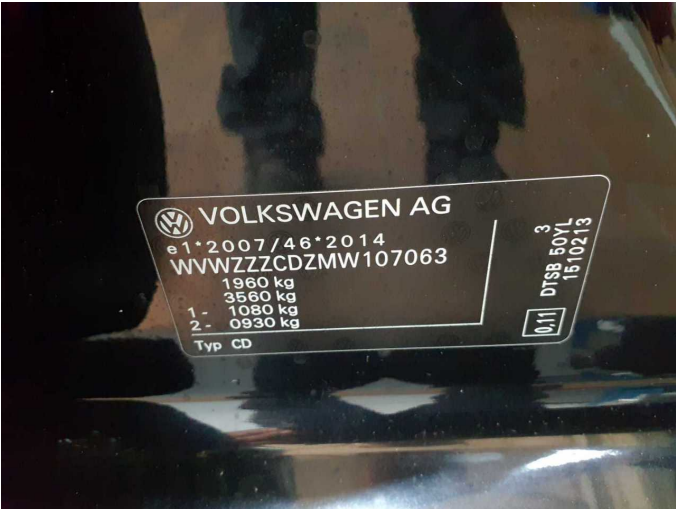


Figure 11: VIN



Figure 12: Mounted tyres

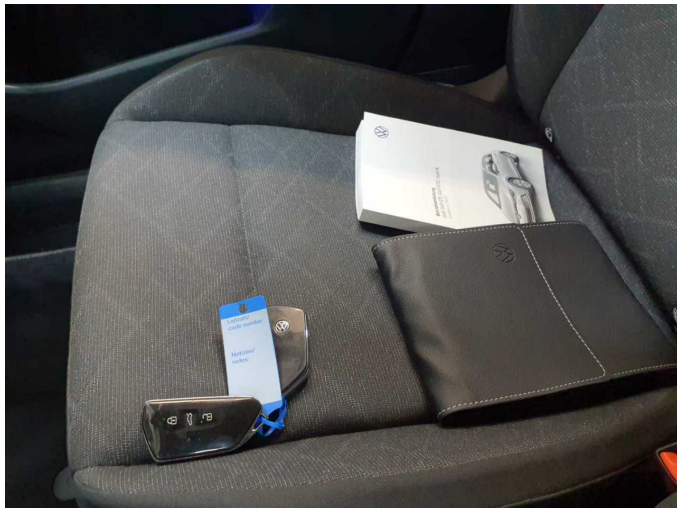


Figure 13: Documents



Figure 14: Documents



Figure 15: Additional tyres

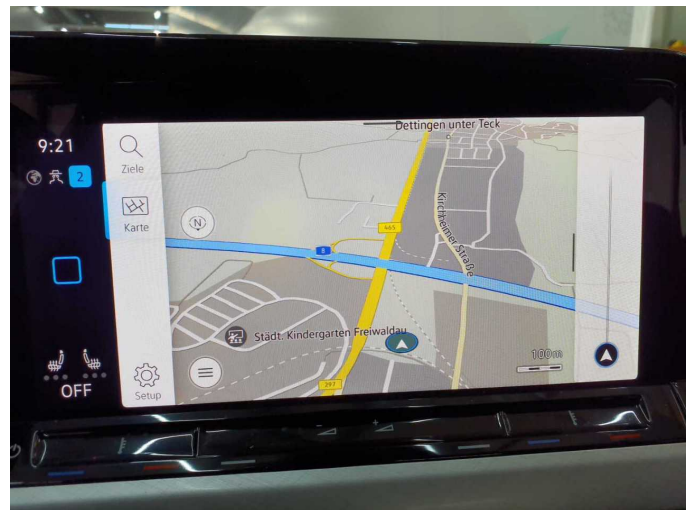


Figure 16: Navigation



Figure 17: Misc.



Figure 18: Misc.



Figure 19: Misc.



Figure 20: Misc.



Figure 21: Misc.



Figure 22: Misc.

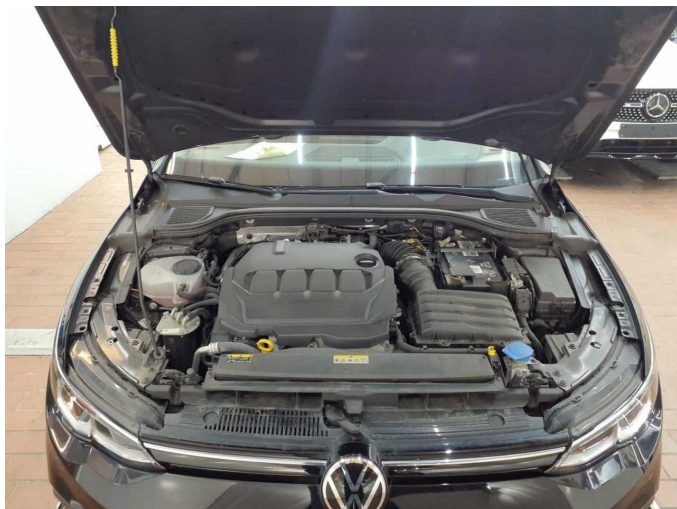


Figure 23: Misc.



Figure 24: Misc.



Figure 25: Misc.



Figure 26: Misc.



Figure 27: Misc.



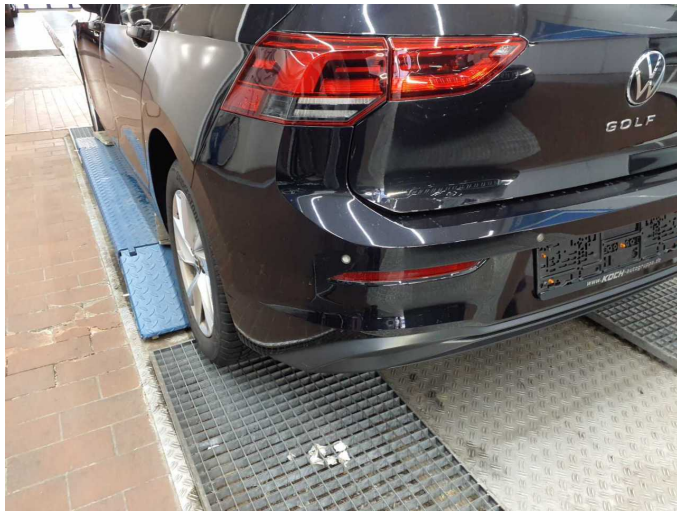
Figure 28: Misc.



Figure 29: Misc.



Damage 1: Equipment: Tirefit filler - Expired - Replace



Damage 2: Electronic systems: Parking assistance - Paint defect - Repair



Damage 2: Electronic systems: Parking assistance - Paint defect - Repair



Damage 2: Electronic systems: Parking assistance - Paint defect - Repair



Damage 2: Electronic systems: Parking assistance - Paint defect - Repair



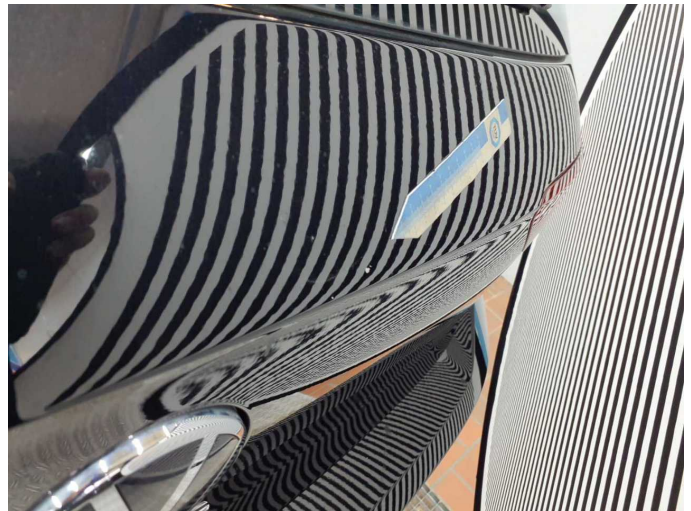
Damage 2: Electronic systems: Parking assistance - Paint defect - Repair



Damage 2: Electronic systems: Parking assistance - Paint defect - Repair



Damage 3: Boot lid / rear door: Boot lid - Scratched - Smart repair



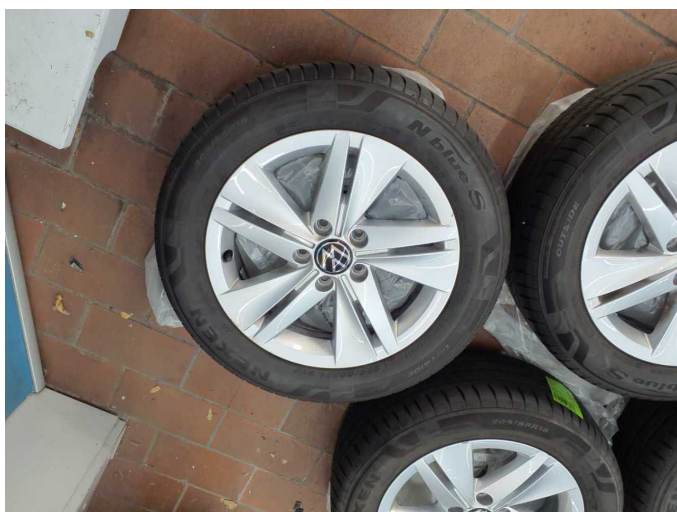
Damage 3: Boot lid / rear door: Boot lid - Scratched - Smart repair



Damage 4: Door - front left side: Door - Scratched - Smart repair



Damage 4: Door - front left side: Door - Scratched - Smart repair



Damage 5: 2nd wheel set: 2 alloy rims - Scratched - Loss in value



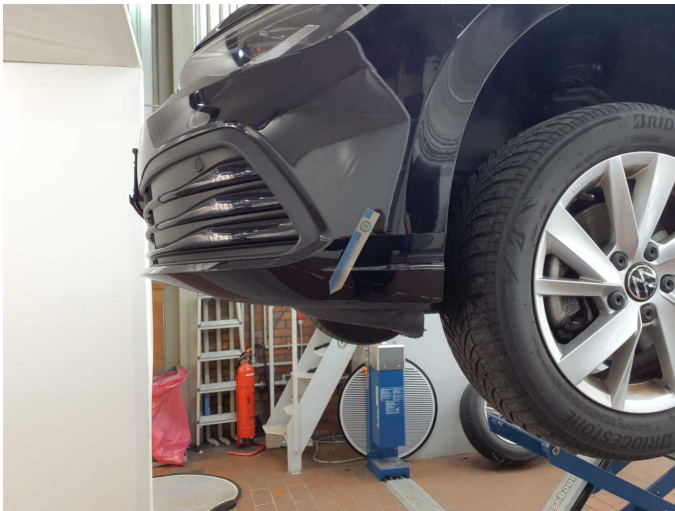
Damage 5: 2nd wheel set: 2 alloy rims - Scratched - Loss in value



Damage 5: 2nd wheel set: 2 alloy rims - Scratched - Loss in value



Damage 5: 2nd wheel set: 2 alloy rims - Scratched - Loss in value



Damage 6: Front bumper: Front bumper - Scratched - Repair and paint



Damage 6: Front bumper: Front bumper - Scratched - Repair and paint



Damage 6: Front bumper: Front bumper - Scratched - Repair and paint



Damage 6: Front bumper: Front bumper - Scratched - Repair and paint



Damage 6: Front bumper: Front bumper - Scratched - Repair and paint



Damage 6: Front bumper: Front bumper - Scratched - Repair and paint



Damage 6: Front bumper: Front bumper - Scratched - Repair and paint



Repainting 1: Side panel - rear right side, Door - rear right side, Door - front right side



Repainting 1: Side panel - rear right side, Door - rear right side, Door - front right side



Repainting 1: Side panel - rear right side, Door - rear right side, Door - front right side



Repainting 1: Side panel - rear right side, Door - rear right side, Door - front right side



Repainting 1: Side panel - rear right side, Door - rear right side, Door - front right side



Repainting 1: Side panel - rear right side, Door - rear right side, Door - front right side