



VOLKSWAGEN Golf VIII: 2AGS803

Vinnnummer:	VWVZZZCDZMW091850	Versionname:	Golf VIII 2.0 TDI Life DSG 110kW/150pk 5D/P Auto-7
First Registrationdate:	29/03/2021	Fiscalpower:	
Expertise Mileage:	67325	Power Kw:	110
Bodytype:		Body colour:	Grey
Gearbox:	Automatic	Type of rims (mounted):	Aluminium
Transmission:	Front	Parking lot:	d237
Fueltype:	Diesel		
Number of doors:	5		
Number of seats:	5		
Number head rests:	5		
Type of rims (mounted):	Aluminium		
Certificate of Conformity:	Yes		
Category:	Passenger Car		
Registration Certificate Car (BE):	Yes		
Bodywork:	Clean		
Interior:	Clean		

Options

Number of keys total:	2	Radio
Number keys remote:	2	Sun Roof electric
GPS storage:		Front parking sensors
GPS storage:	HD	Rear parking sensors
Windows electric F:		
Windows electric R:		
Cruise Control:		
Steering wheel multifunctional:		
Navigation with screen:		
Airco electronic:		
Rims alloy:		

Limited Technical Inspection

Idle position:	OK	Sound engine:	OK
Engine startingtime:	OK	Clutch test:	OK
Exhaust gass:	OK	Transmission:	OK

Degree of wear

205/55/16/91 T				
Winter tyres:	Fr.L.	Michelin: 5 mm	Fr.R.	Michelin: 5 mm
	Re.L.	Michelin: 5 mm	Re.R.	Michelin: 5 mm
Tyre profile depth FL				5.0
Tyre profile depth FR				5.0
Tyre profile depth RL				5.0
Tyre profile depth RR				5.0
Tyre size FL				205/55 R 16 91 T
Tyre size FR				205/55 R 16 91 T
Tyre size RL				205/55 R 16 91 T
Tyre size RR				205/55 R 16 91 T
Tyre type FL				Winter
Tyre type FR				Winter
Tyre type RL				Winter
Tyre type RR				Winter
Tyre make FL				261
Tyre make FR				261
Tyre make RL				261
Tyre make RR				261

Assistance equipment

Repair kit:	Yes	Compressor:	Yes
-------------	-----	-------------	-----

Number of charging cables (normal)
Number of charging cables (rapid charge)

0
0

Bumper F, Scratch(es), Repair and paint (complete)



Bumper moulding F, Scratch(es), Replace



Outside rear-view mirror housing L, Scratch(es), Polish



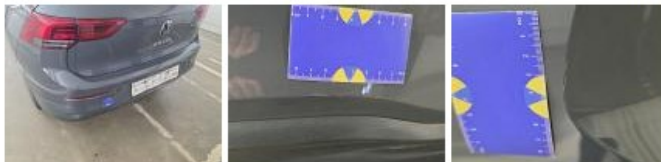
Roof pillar L, Dent(s) and scratch(es), Acceptable



Bumper trim R, Scratch(es), Acceptable



Bumper R, Scratch(es), Acceptable



Alloy rim FR, Scratch(es), Repair and paint (complete)



Door RR, Scratch(es), Polish



Wing RR, Dent(s) and scratch(es), Acceptable



Outside rear-view mirror housing R, Scratch(es), Repair and paint (complete)



Roof, Chemical polution, Polish



Bodywork, No damage, Check

