



Expertise

Protocol number: 41431848
Order No. / Reference: 25147602
Inspection date: 7 Sept 2025

Manufacturer: Volkswagen

Model: Golf 2.0 TDI SCR DSG Style

VIN: WVGZZCDZMW021099



Vehicle details	
Manufacturer / Type / Model / Equipment	
Volkswagen Golf 2.0 TDI SCR DSG Style	
Vehicle Identification number	WVGZZCDZMW021099
Mileage (Read)	93,805 km
First registration	13 Oct 2020
Number of holders	1
Next periodical technical inspection	11/2025
(Report on hand)	
Power / Engine displacement	110 kw / 1,968 ccm
Fuel type / Cylinder	Diesel / 4
Gearbox / Number of gears	Automatic / 7
Type of drive	Front drive
Type of vehicle	Saloon car
Colour / colour code	Deep Black Perleffekt
Doors / Seats	5 / 5
Upholstery type	Alcantara / cloth
Colour of upholstery	Beige



Vehicle details

Maintenance booklet / proof	digital proof / complete	Next maintenance in	9,700 km
Last maintenance on / at	12/2024 at 77,603 km		
Key is / should be	2 / 2	FZG documents	ZB#2 (B) was available (copy), ZB#1 (S) was not available
		Letter No.	FU694938
Previous damage / Accident	Detectable	Repainting	None detectable
Inspection conditions	sufficient	Lifting equipment / pit	yes
Test drive	Not performed	Engine function test	Performed
Manufacturer key number/ type code number	0603 / CKO 00196		
Emission standard	EURO6;WLTP;DG;PI/CI; M, N1 I	Fine dust sticker	
Permitted total weight	1,950 kg	Empty weight	

Tyres

Mounted tyres

#	Tyre size	Type of tyre	Manufacturer	Tread depth
1)	225/45 R17 91W	Summer tyres on Light alloy	Pirelli	7mm / 7mm
2)	225/45 R17 91W	Summer tyres on Light alloy	Pirelli	7mm / 7mm

Additional tyres

#	Tyre size	Type of tyre	Manufacturer	Tread depth
1)	205/50 R17 93H	Winter tyres on Light alloy	Pirelli	6mm / 6mm
2)	205/50 R17 93H	Winter tyres on Light alloy	Pirelli	6mm / 6mm

Replacement

Typ	Tyre size	Type of tyre	Manufacturer	Tread depth
	Tirefit	Expiration date 04/2029		

Legend: Tread depth information for tyres on the left is in the first place, for tyres on the right is in the second place on the axle in the direction of travel

Equipment

Standard equipment

- 2 USB-C ports at the front
- Airbag for driver and front passenger
- 30-color ambient lighting
- App Connect
- Electrically adjustable exterior mirrors with memory function
- Brake light, third
- Chrome strip on the side windows below
- Decorative inlays "New Brushed Dark Metal"
- Digital Cockpit Pro, multi-colored
- Parking assistance
- Electronic differential lock XDS
- Electronic stabilization program and electromechanical brake booster
- Electric windows, front and rear
- Front windscreen in laminated safety glass, heat and sound insulating
- Transmission: 7-speed DSG
- Rear window wiper with interval control
- ISOFIX anchorage points
- Rear headrests
- Paint finish: Uni
- LED light in the front footwell, light color selectable
- LED taillights
- Steering wheel: Multifunction leather steering wheel, with shift paddles
- Front center armrest height and length adjustable
- Non-smoking version
- Emergency call service
- Radio "Composition"
- Wheels: Light alloy wheels (4) "Belmont" 7.5 J x 17
- Rear seat bench undivided, backrest asymmetrically divided, foldable with center armrest
- Electromechanical power steering
- Seat belts: Three-point automatic seat belts for the outer rear seats
- Seat covers in fabric, seat center panels in microfleece "ArtVelours"
- Seats: Sport comfort seats in the front
- Start-stop system
- Bumpers in body color
- Textile floor mats front and rear
- Ambient lighting with logo projection
- Prepared for "We Connect" and "We Connect Plus"
- Electronic immobilizer
- Green thermal insulation glazing, side and rear
- 2 USB charging ports on the rear center console
- Airbag: Head airbag system for front and rear passengers including front side airbags
- Automatic distance control ACC "stop & go"
- Exterior mirror housings and door handles in body color
- Vehicle tool kit
- Car2X
- Headlining in Storm Grey
- Diesel particulate filter and SCR catalyst
- Dual-tone horn
- Electric auxiliary air heater
- Electronic parking brake including auto-hold function
- Travel Assist
- Automatic headlight switching with LED daytime running lights
- Pedestrian protection measures expanded
- Luggage compartment cover
- Rear window heated
- Rear spoiler in body color
- Air Care Climatronic air conditioning system
- Front headrests
- LED reading lights front (2) and 2 rear
- LED Plus headlights
- Illuminated strip between the headlights and door handle recesses
- Make-up mirrors in the sun visors, illuminated
- Fatigue detection
- Emergency braking assistant "Front Assist" with pedestrian and cyclist detection
- Tire pressure monitoring indicator (passive)
- Wheels: Tire Mobility Set
- Bad weather lights and cornering lights
- Keyless start system without safe lock
- Seat belts: Three-point automatic seat belt for the middle rear seat
- Seat belts: Three-point automatic seat belts in the front with height adjustment and belt tensioner
- Seats: ergoActive seat with 14-way adjustment and memory function on driver's side
- 12 volt socket in the luggage compartment
- Telephone interface with inductive charging function
- Door and side panels foam foil and fabric
- First aid kit, warning triangle and safety vest
- Warning sound and light for unfastened seat belts at the front and rear
- Central locking without safe security, with radio remote control and 2 radio folding keys

Extra equipment



- Chassis: Adaptive chassis control DCC including driving profile selection (allows the driver to choose between comfortable, sporty, or normal chassis settings at the touch of a button – continuously reacts to different driving situations and takes braking, steering, and acceleration into account)
- Finish: pearl effect
- "Discover Pro" navigation system including "Streaming & Internet" (25.4 cm (10-inch) touchscreen display - 6+1 speakers - App-Connect including App-Connect Wireless for Apple CarPlay - Apple compatibility with USB port - DAB+ digital radio reception - Multifunctional camera - "Discover Pro" navigation system including "Streaming & Internet" - FM radio reception, dual tuner, RDS, radio station logos - MP3 playback - 4 x 20 watt output - Voice control - Traffic sign recognition - Map with 2D display)
- Package: Winter "Premium" (DSG) ("Air Care Climatronic" air conditioning with active combi filter, rear controls, and 3-zone temperature control; heated leather multifunction steering wheel with shift paddles; automatically heated front windshield washer nozzles; auxiliary heating and ventilation with remote control and timer; heated front and outer rear seats)
- Wheels: Light alloy wheels (4) "Ventura" 7.5 J x 17 with sporty driving dynamics (wheel locks with extended theft protection - tires 225/45 R 17 with sporty driving dynamics)
- Wheels: Winter wheels (additional), light alloy, "Belmont" 6.5 J x 17 (4 light alloy wheels 6.5 J x 17 - wheel wrench and jack - winter tires 205/50 R 17 H)
- IQ.LIGHT - LED matrix headlights, including Light and Sight package (Dynamic Light Assist dynamic high beam control for LED matrix headlights - Automatically dimming interior mirror - IQ.LIGHT - LED matrix headlights with LED daytime running lights, cornering lights, and dynamic indicators - LED taillights with dynamic indicators - Dynamic headlight range control with dynamic cornering lights - Multifunction camera - Rain sensor - Adverse weather lights and cornering lights)
- Package: Comfort Package (electrically folding/adjustable exterior mirrors with memory function, heated - anti-theft alarm system with interior monitoring, backup horn, and tow-away protection - Park Assist parking assistant including parking aid - Proactive occupant protection system in conjunction with Front Assist and Side Assist - Keyless Access locking and starting system with safe lock - Side airbags for the outer rear seats, including front side airbags and head airbag system - Side Assist lane change assistant)
- Panoramic tilt/slide roof (2 LED reading lights at the front and 2 at the rear)
- Progressive steering (the steering ratio is increased progressively with increasing steering angle - the steering behavior becomes noticeably more direct depending on the driving situation, the steering wheel angles are significantly reduced and thus steering comfort is increased)
- Rear side windows and rear window tinted

Brief expert findings

Documents submitted	At the time of the inspection, the registration certificate Part 2 (letter) was available, but the registration certificate Part 1 (certificate) was not. (Copy)
VIN comparison	The vehicle identification number (VIN) was read from the vehicle and its conformity with the submitted documents was verified during the inspection by the undersigned.
Inspection	The inspection conditions were sufficient for the assessment of the vehicle. Lifting equipment and a pit were available for examining the vehicle.
Test drive	No test drive/maneuvering was carried out during the inspection of the vehicle.
Engine function test	An engine test run was performed.

Value reducing factors

No.	Component group	Description
1	Door - front left side	Door edge - Scratch(es) - Smart repair
2	Roof	Roof - dent(s) - Smart repair
3	Interior	Interior - Soiled - Clean
4	Sill - right side	Sill - Deformed - Smart repair
5	Wheel / tyres	Alloy rim - front left side - Scratch(es) - Loss in value
6	Wheel / tyres	Alloy rim - front right side - Scratch(es) - Loss in value
7	Bonnet	Bonnet (Beginnende Korrosion) - Stone chips - Paint
8	Rear bumper	Rear bumper - Scratch(es) - Paint



Wear and tear

No.	Component group	Description
1	Wing mirror - left side	Cap - Scratch(es) - No deduction
2	Wheel / tyres	Alloy rim - rear right side - Scratch(es) - No deduction
3	Side panel - rear left side	Side panel - dent(s) - No deduction

The vehicle shows signs of wear commensurate with its age and use.

Previous damages

No.	Previous damage	Extent of damage (Net)
1	Front, Provided by user / customer, from 31 Oct 2022	3.448,26 €

Order/Scope of order

The order was placed to prepare a sales report for the vehicle described. This includes the following:

- Description of core relevant information about the vehicle
- Documentation of equipment features
(Delivery by third-party service providers)
- Documentation of damage, defects, missing parts
- Documentation of previous damage, unrepaired previous damage, repainting
- a brief visual or functional inspection of the equipment details if possible.
(Functional tests of driver assistance systems are not included in the scope of services!)
- a photo documentation of the vehicle

Basis for the order

This product is based on the Alphabet Fuhrpark GmbH guidelines for vehicle returns and valuations. The expert makes the explicit findings in each individual case objectively within the framework of the specified standards based on his or her own expertise.

The vehicle inspection takes place in a disassembled state.

Damage or defects that can only be detected during disassembly/diagnosis work or through advanced knowledge remain within the scope of the prognosis risk. An extended risk exists for concealed defects caused by fraudulent deception and not identifiable by the expert.

Damage or defects resulting from normal use or wear and tear of the vehicle will be accepted according to the applicable standard.

There was no explicit identification or monetary consideration of the expected features within the product.

Features which in their nature and severity slightly exceed normal use but do not constitute unacceptable damage will be documented and identified under signs of use if necessary.

Damage or defects which, according to the underlying standard, can no longer be attributed to normal use or wear and tear are listed in the product under "Depreciating Factors".

Depending on the product specification, a monetary ID can be provided. If this takes place, the costs can be 100% d or pro rata depending on the vehicle's age and mileage.

Previous damages

According to available information previous damages were repaired at the vehicle. Traces of repairs, which allow conclusions about the area of repair, were not recognizable during the inspection.



Figure 1: Diagonal front (left)



Figure 2: Diagonal front (right)



Figure 3: Diagonal rear (left)



Figure 4: Diagonal rear (right)



Figure 5: Interior - front



Figure 6: Interior - rear



Figure 7: Instrument cluster



Figure 8: Instrument panel



Figure 9: Interior 360° view



Figure 10: Cargo area

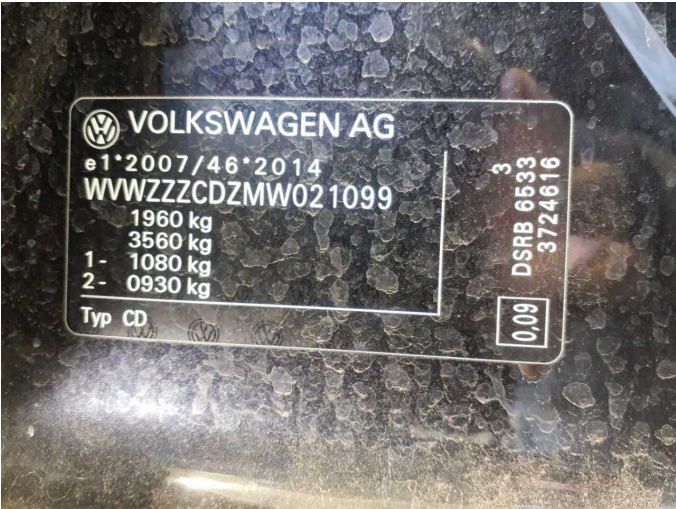


Figure 11: VIN



Figure 12: Mounted tyres



Figure 13: Documents



Figure 14: Documents

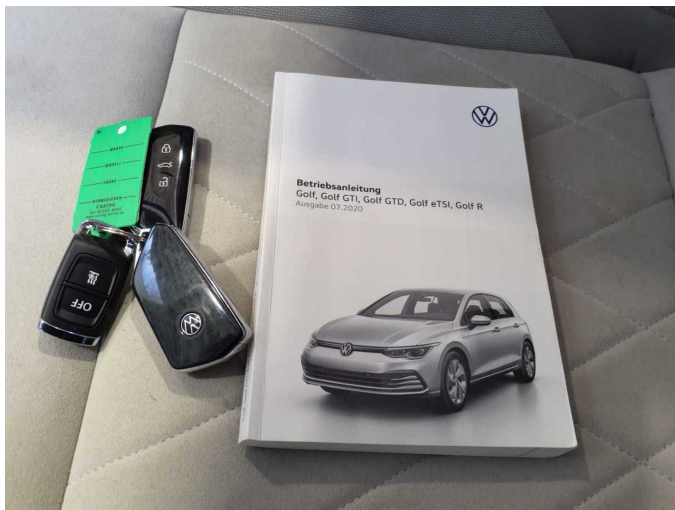


Figure 15: Documents



Figure 16: Additional tyres



Figure 17: Navigation



Figure 18: Misc.



Figure 19: Misc.



Figure 20: Misc.



Figure 21: Misc.



Figure 22: Misc.

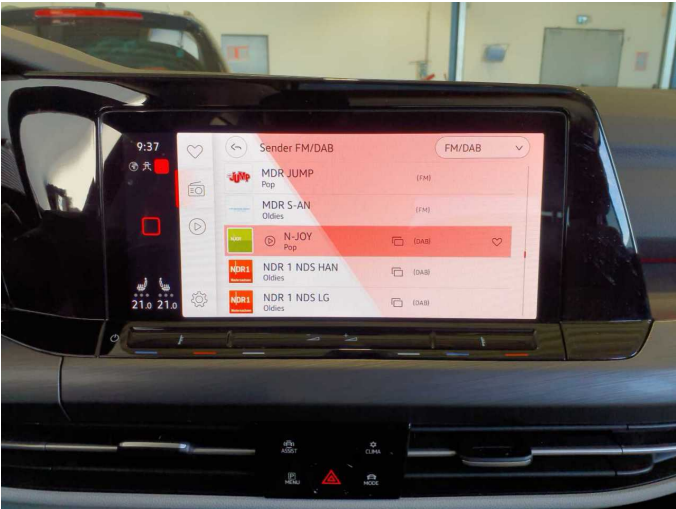


Figure 23: Misc.



Figure 24: Misc.



Figure 25: Misc.



Figure 26: Misc.



Figure 27: Misc.



Figure 28: Misc.

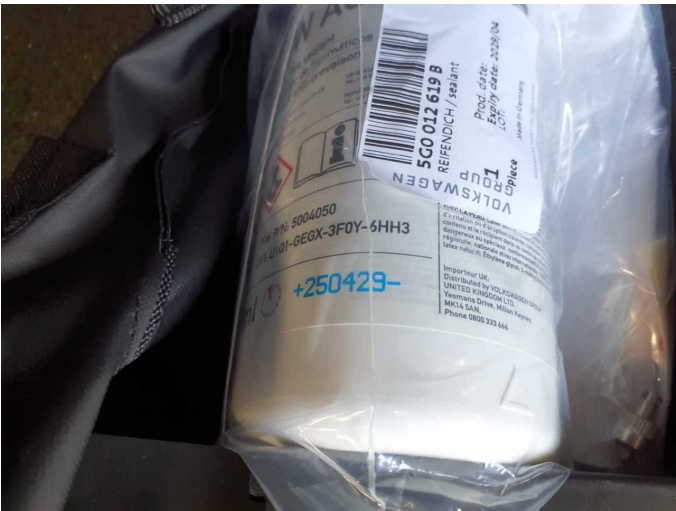


Figure 29: Misc.



Figure 30: Misc.



Figure 31: Misc.



Damage 1: Door - front left side: Door edge - Scratch(es) - Smart repair



Damage 1: Door - front left side: Door edge - Scratch(es) - Smart repair



Damage 1: Door - front left side: Door edge - Scratch(es) - Smart repair



Damage 2: Roof: Roof - dent(s) - Smart repair



Damage 2: Roof: Roof - dent(s) - Smart repair



Damage 2: Roof: Roof - dent(s) - Smart repair



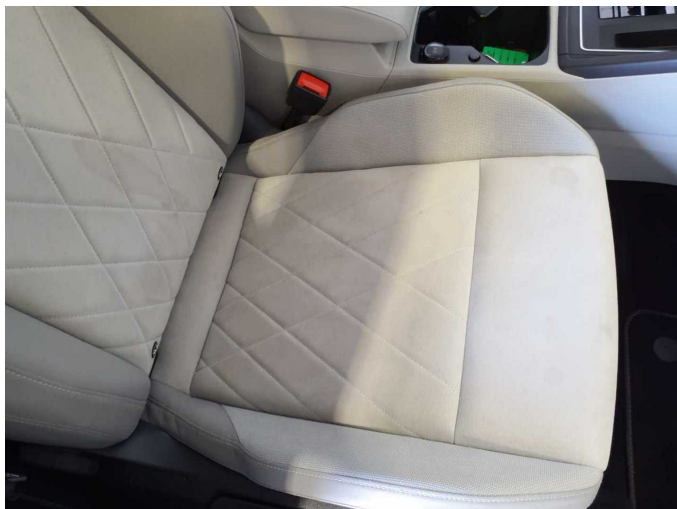
Damage 3: Interior: Interior - Soiled - Clean



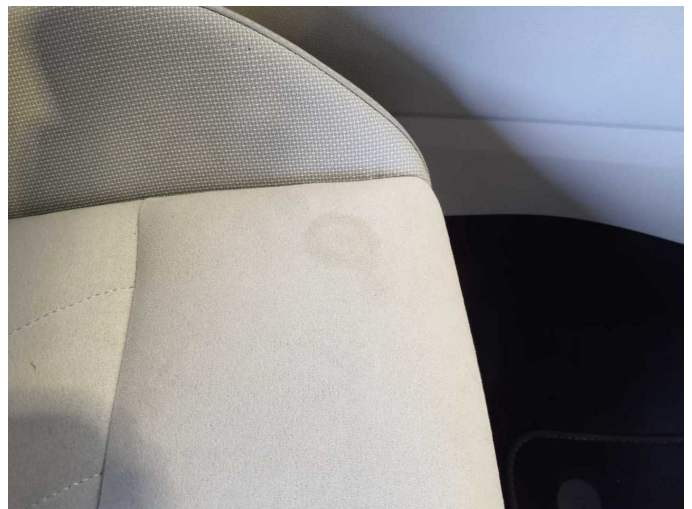
Damage 3: Interior: Interior - Soiled - Clean



Damage 3: Interior: Interior - Soiled - Clean



Damage 3: Interior: Interior - Soiled - Clean



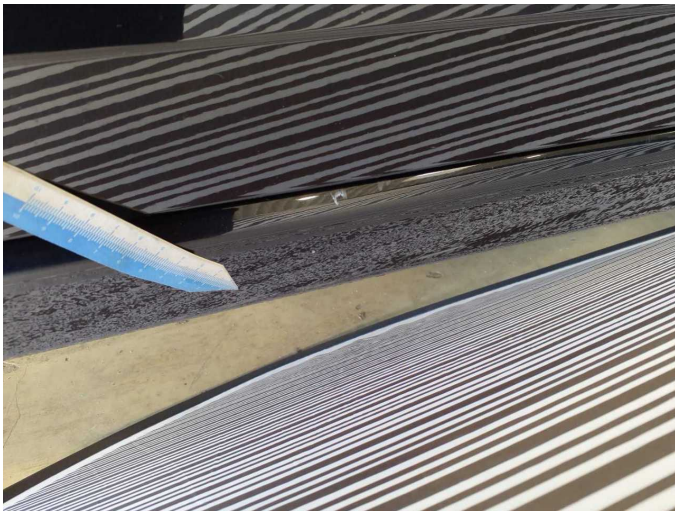
Damage 3: Interior: Interior - Soiled - Clean



Damage 3: Interior: Interior - Soiled - Clean



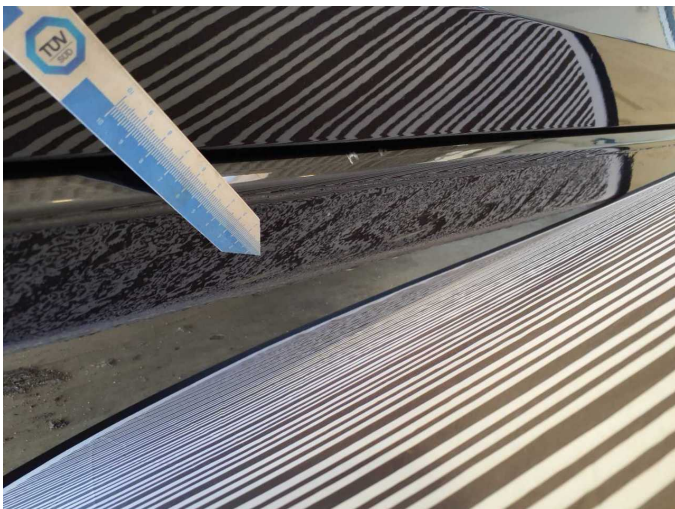
Damage 4: Sill - right side: Sill - Deformed - Smart repair



Damage 4: Sill - right side: Sill - Deformed - Smart repair



Damage 4: Sill - right side: Sill - Deformed - Smart repair



Damage 4: Sill - right side: Sill - Deformed - Smart repair



Damage 5: Wheel / tyres: Alloy rim - front left side - Scratch(es) - Loss in value



Damage 5: Wheel / tyres: Alloy rim - front left side - Scratch(es) - Loss in value



Damage 5: Wheel / tyres: Alloy rim - front left side - Scratch(es) - Loss in value



Damage 5: Wheel / tyres: Alloy rim - front left side - Scratch(es) - Loss in value



Damage 5: Wheel / tyres: Alloy rim - front left side - Scratch(es) - Loss in value



Damage 6: Wheel / tyres: Alloy rim - front right side - Scratch(es) - Loss in value



Damage 6: Wheel / tyres: Alloy rim - front right side - Scratch(es) - Loss in value



Damage 6: Wheel / tyres: Alloy rim - front right side - Scratch(es) - Loss in value



Damage 7: Bonnet: Bonnet (Beginnende Korrosion) - Stone chips - Paint



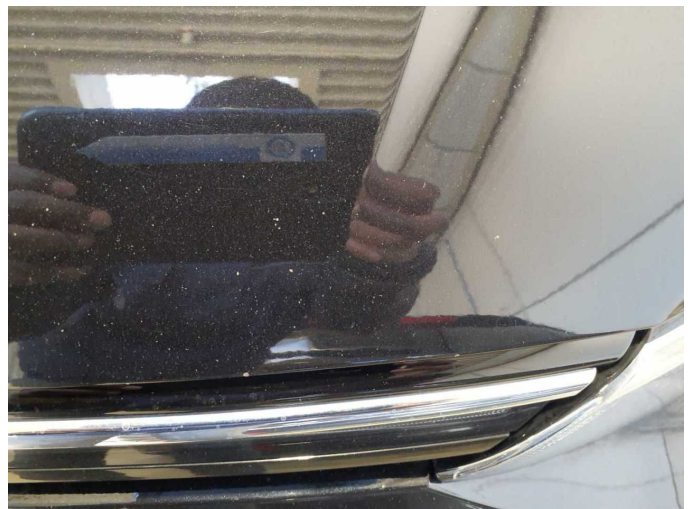
Damage 7: Bonnet: Bonnet (Beginnende Korrosion) - Stone chips - Paint



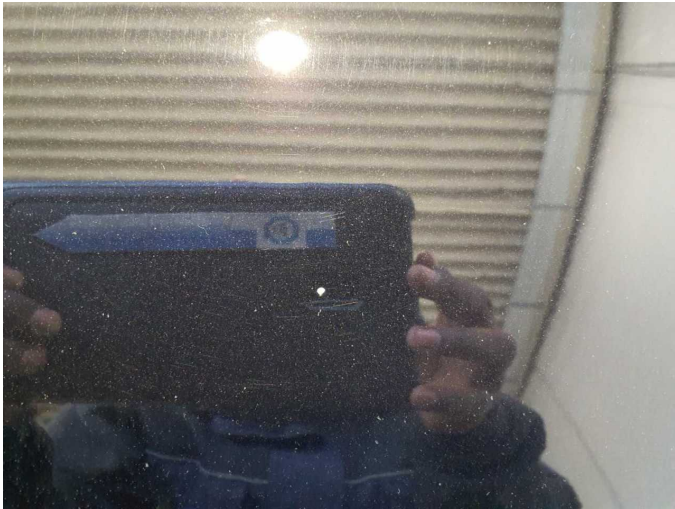
Damage 7: Bonnet: Bonnet (Beginnende Korrosion) - Stone chips - Paint



Damage 7: Bonnet: Bonnet (Beginnende Korrosion) - Stone chips - Paint



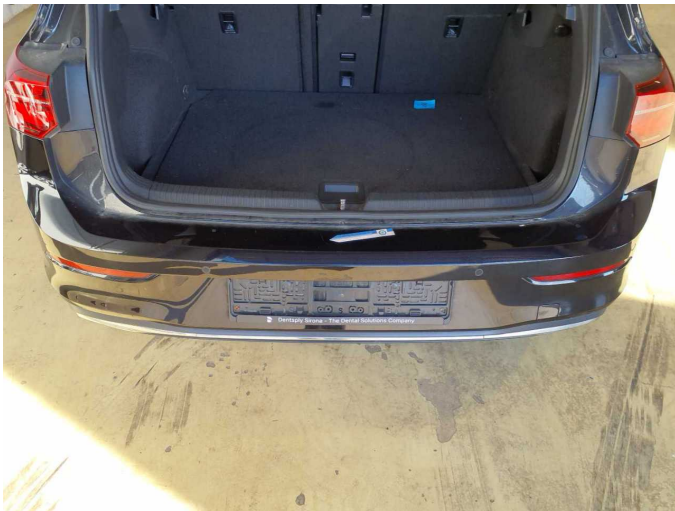
Damage 7: Bonnet: Bonnet (Beginnende Korrosion) - Stone chips - Paint



Damage 7: Bonnet: Bonnet (Beginnende Korrosion) - Stone chips - Paint



Damage 7: Bonnet: Bonnet (Beginnende Korrosion) - Stone chips - Paint



Damage 8: Rear bumper: Rear bumper - Scratch(es) - Paint



Damage 8: Rear bumper: Rear bumper - Scratch(es) - Paint



Damage 8: Rear bumper: Rear bumper - Scratch(es) - Paint



Damage 8: Rear bumper: Rear bumper - Scratch(es) - Paint



Damage 8: Rear bumper: Rear bumper - Scratch(es) - Paint



Damage 8: Rear bumper: Rear bumper - Scratch(es) - Paint



Wear and tear 1: Wing mirror - left side: Cap - Scratch(es) - No deduction



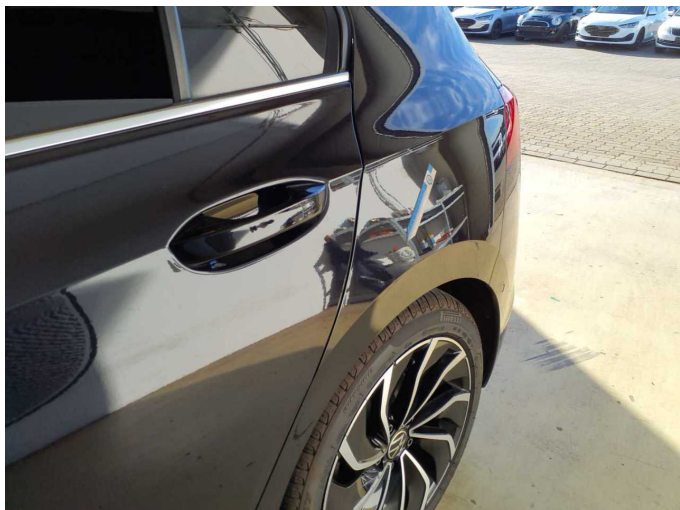
Wear and tear 1: Wing mirror - left side: Cap - Scratch(es) - No deduction



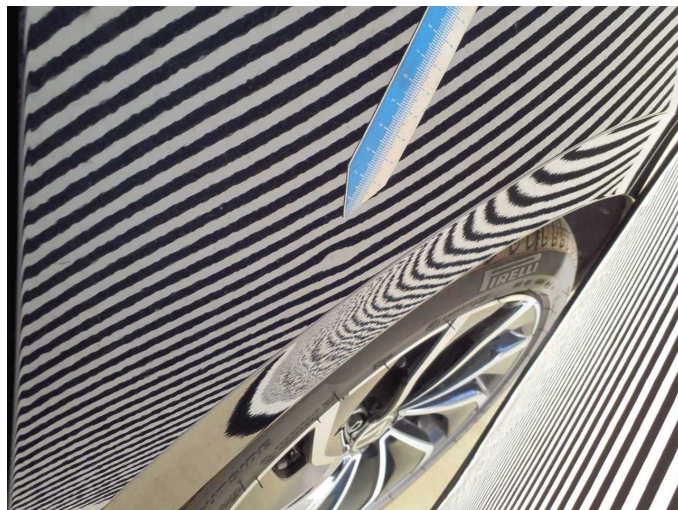
Wear and tear 2: Wheel / tyres: Alloy rim - rear right side - Scratch(es) - No deduction



Wear and tear 2: Wheel / tyres: Alloy rim - rear right side - Scratch(es) - No deduction



Wear and tear 3: Side panel - rear left side: Side panel - dent(s) - No deduction



Wear and tear 3: Side panel - rear left side: Side panel - dent(s) - No deduction



Wartungshistorie

(gemäß Auftraggeber Informationen)

Fahrgestellnummer: WVVZZZCDZMW021099

Hersteller / Modell: VOLKSWAGEN VW Golf 2.0 TDI SCR DSG Style

Datum	KM-Stand	Beschreibung
24.06.2025	90.746	Bremsflüssigkeit; Bremsflüssigkeit ern; Kraftstofffilter ern; Luftfiltereinsatz ern; Regelwartungsdienst; Systemtest/Eigendiagnose; Wartung Sonstiges
27.12.2024	77.603	Reparatur Sonstiges; Systemtest/Eigendiagnose
11.12.2024	77.603	Motoröl b. Wartung; Ölfilter ern; Ölwechsel; Wartung Sonstiges
18.10.2024	71.626	Bremse Sonstiges; Bremsklötze hinten; Bremsklötze vorne; Bremsscheiben hinten; Bremsscheiben vorne; Reparatur Sonstiges
29.11.2023	59.767	HU + AU; Regelwartungsdienst; Wartung Sonstiges
02.06.2023	49.016	Bremsflüssigkeit; Bremsflüssigkeit ern; Motoröl b. Wartung; Ölfilter ern; Ölwechsel; Wartung Sonstiges
24.04.2023	0	Batterie ern
16.03.2022	29.365	Regelwartungsdienst
08.12.2021	26.102	Motoröl b. Wartung; Ölwechsel