

VOLKSWAGEN Golf VII

Golf GTI 2.0 TSI OPF DSG

VIN NO WVWZZZAUZLW024379
Registration Number UZLW024379



MOT Date

2024-11-01

Last Service



Number of Owners

3

Last Service Mileage



Number of Keys

2

First Registration Date

2019-09-24

Odometer Reading

47394 km

Country First Registered

Germany

Inspection Report Summary

Customer	BCA Online	Report Number	P20250716095514
Inspection Date / Place	2025-07-16 / BCA Neuss	Cosmetic Grade	4

Vehicle Summary

Vehicle Condition	Runner	VAT Type	Margin
Fuel Type	Petrol	Gearbox Type	Automatic
Colour	Blue	Engine Size (cc)	1984
Engine Size	2.0	No of Doors	5
Body Type	Sedan	Drive Train	Front
Seat Colour		No of Seats	5
Seat Covering Name	Schwarz	Seat Covering	Leather
Charging Cables		NEDC CO2 Rating (q/km)	140

Vehicle History & Documents

Service Book Available	Missing	Next Service Mileage	km
Previous Usage		Imported	No
Manufacturer Warrenty			

Equipment

USB Socket	Alloys wheels	Bluetooth telephone interface	Front fog lamps
Headlamp wash/wipe	Remote adjusting wing mirrors	Reversing Camera	Sports seats
Sunroof	Electrically folding wing mirrors	LED Headlamps	Rear parking sensors
Airbag Status	Anti-lock braking	Cruise control	Front parking sensors
Heated wing mirrors	Remote central locking	Satellite navigation	Stability control
CD Player	Leather steering wheel	Radio	

Equipment Details

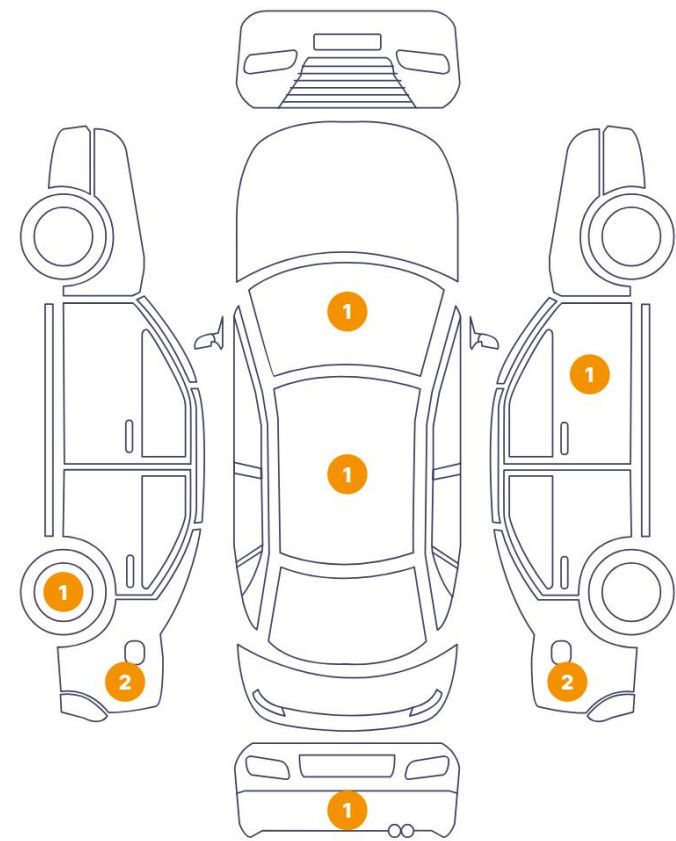
Air Conditioning	Dual Zone Climate Control	Air Conditioning Name	Climatronic
Alloy Wheel Size	18	Extra Wheel / Tyre Set	Winter Tyres - Alloy
Satellite Navigation	Discover Media	Seat Heating	Front
Sunroof Type	Opening Panoramic	Radio	Composition Media

Wheels & Tyres

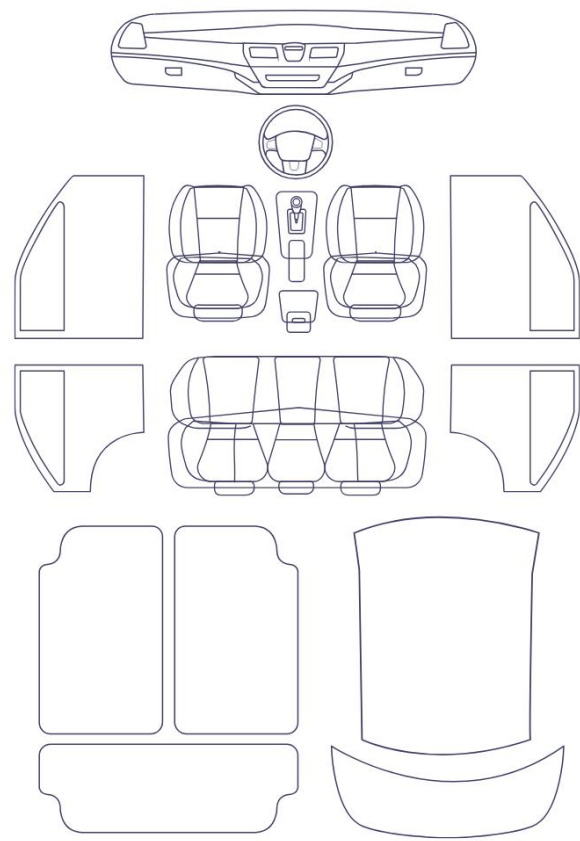
Right Front Tyre Depth	5	Left Front Tyre Depth	5
Right Rear Tyre Depth	4	Left Rear Tyre Depth	4
Extra Wheel - 1 Tyre Depth	5	Extra Wheel - 2 Tyre Depth	5
Extra Wheel - 3 Tyre Depth	6	Extra Wheel - 4 Tyre Depth	6

Cosmetic Damage

9 Schäden



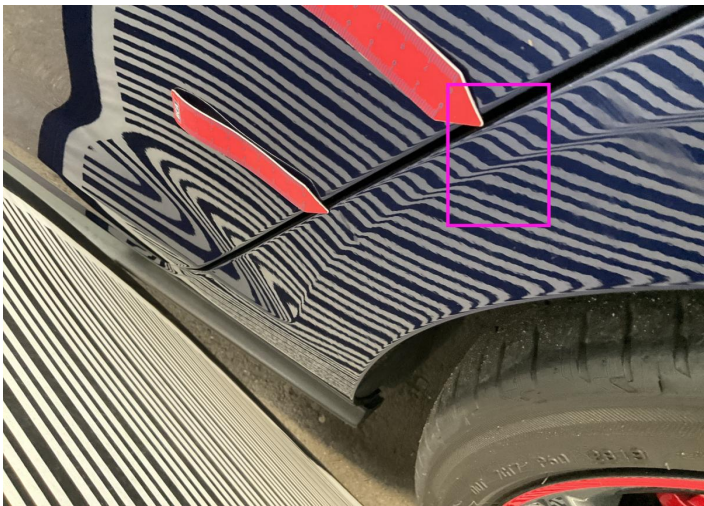
0 Schäden



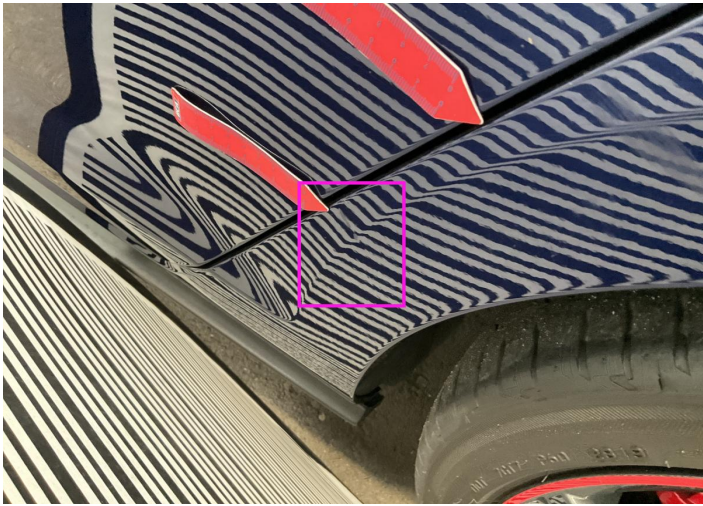
Component		Damage	Comments
1	Windshield / Front	Paint / Chipping	
2	Side Panel / Back Left	Bodywork / Dent / Dent	
3	Side Panel / Back Left	Bodywork / Dent / Dent	
4	Rim / Back Left	Out of Bodywork / Scratch	
5	Corner Bumper / Back Left	Bodywork / Dent / Dent	
6	Roof	Bodywork / Dent / Dent	
7	Side Panel / Back Right	Bodywork / Dent / Dent	
8	Side Panel / Back Right	Paint / Scratch / Scuff	
9	Door / Front Right	Bodywork / Dent / Dent	



1. Windshield / Front
Paint / Chipping -



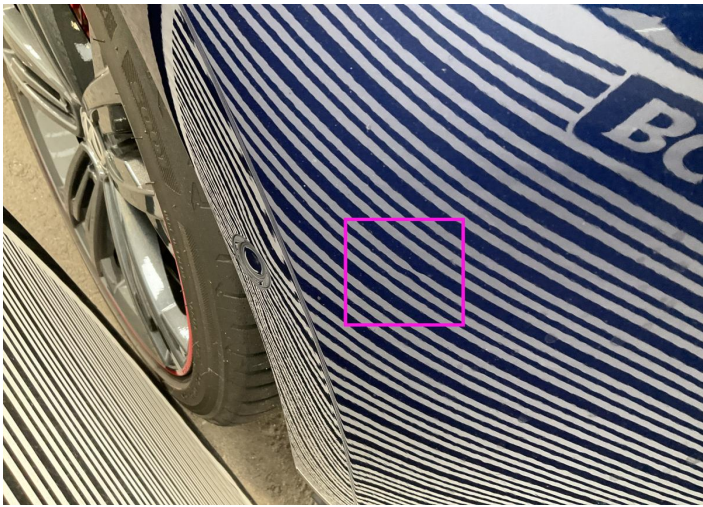
2. Side Panel / Back Left
Bodywork / Dent / Dent -



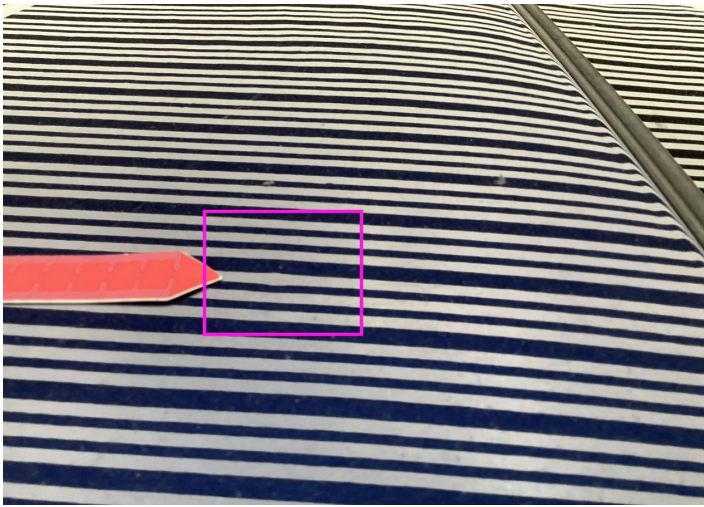
3. Side Panel / Back Left
Bodywork / Dent / Dent -



4. Rim / Back Left
Out of Bodywork / Scratch -



5. Corner Bumper / Back Left
Bodywork / Dent / Dent -



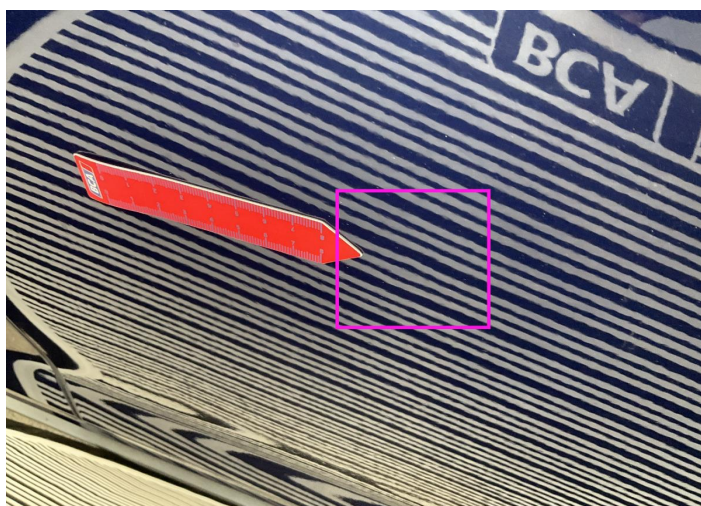
6. Roof
Bodywork / Dent / Dent -



7. Side Panel / Back Right
Bodywork / Dent / Dent -



8. Side Panel / Back Right
Paint / Scratch / Scuff -



9. Door / Front Right
Bodywork / Dent / Dent -

Mechanical Condition

Control Lights

Display Defect	✓	ABS Warning Light	✓
ESP Fault/Traction Control Malfunction Light	✓	Airbag Warning Light	✓
Oil Pressure Warning Light	✓	Brake Warning Light	✓
Power Steering Warning Light	✓	Alternator / Battery	✓
No Dashboard Lights	✓	Tire Pressure Monitoring System	✓

Equipments Test

Main & Spare Keys Functioning	✓	Electric Windows	✓
Navigation System	✓	Parking Sensors / Cameras Functioning	✓
AC / Heating System	✓		

Engine

Engine Status / EML	✓	Engine Leak Visible	✓
Engine Starts	✓		

Gearbox

Gear Box	✓
----------	---

Levels

Brakes Fluid	NA	Coolant Fluid	✓
--------------	----	---------------	---

Test Drive Inspection

Steering Wheel

Steering | Noise / Anomaly

Engine

Engine Noise The Gears Scratch / Skip / Abnormal Operation

Fume Quantity Power Loss

Brake

Brake System Anomaly

General

Test Driven Status

- No troubles detected, good condition or correct tests, according to vehicle age and mileage
- Damages or malfunction detected that requires repairs by the buyer
- Not applicable
- Not tested

Disclaimer

Please also note the "UserGuide condition report", which shows the scope of the vehicle description. [User Guide](#)