



VOLKSWAGEN Golf VII

Golf 2.0 TDI SCR DSG

VIN NO WVVZZZAUZLW009241

Registration Number UZLW009241



MOT Date

2026-09-01

Last Service

2024-02-01

Number of Owners

2

Last Service Mileage

87479

Number of Keys

2

First Registration Date

2019-09-19

Odometer Reading

103534 km

Country First Registered

Germany

Inspection Report Summary

Customer	BCA Online	Report Number	P20250923142248
Inspection Date / Place	2025-09-23 / ARS Altmann AG Riedstadt	Cosmetic Grade	5

Vehicle Summary

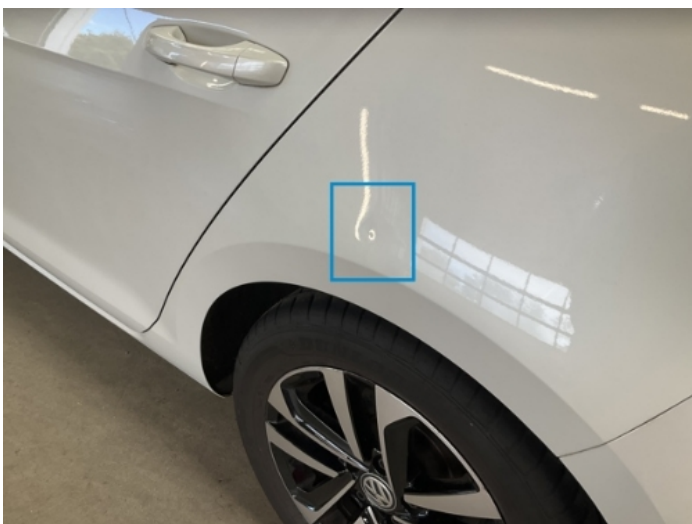
Vehicle Condition	Runner	VAT Type	Margin
Fuel Type	Diesel	Road Worthy	Yes
Colour	White	Engine Size (cc)	1968
Engine Size	2.0	No of Doors	5
Body Type	Sedan	Drive Train	Front
Seat Colour		No of Seats	5
Seat Covering Name		Seat Covering	Cloth
Charging Cables		NEDC CO2 Rating (q/km)	116
Gearbox Type	Automatic		

Vehicle History & Documents

Service Book Available	Computer Print Out Available	Next Service Mileage	km
Previous Usage		Imported	No
Manufacturer Warranty			







Equipment

Traffic sign recognition	USB Socket	Airbag Status	Anti-lock braking
Diesel particulate filter	Front parking sensors	Heated wing mirrors	Parking Assistance
Remote central locking	Satellite navigation	CD Player	Electrically folding wing mirrors
Leather steering wheel	Radio	Trip Computer	Adaptive cruise control
Alloys wheels	Bluetooth telephone interface	Fatigue warning system	Headlamp wash/wipe
High beam assist	Remote adjusting wing mirrors	Reversing Camera	Stability control
Distance warning system	Lane assist	LED Headlamps	Rear parking sensors

Equipment Details

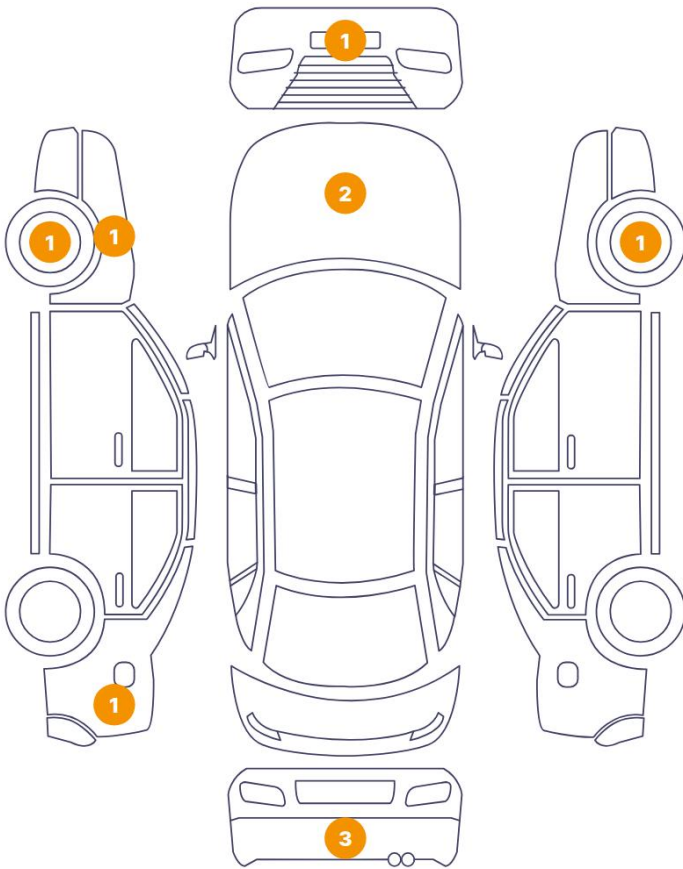
Air Conditioning	Dual Zone Climate Control	Alloy Wheel Size	16
Extra Wheel / Tyre Set	Winter Tyres	Seat Heating	Front

Wheels & Tyres

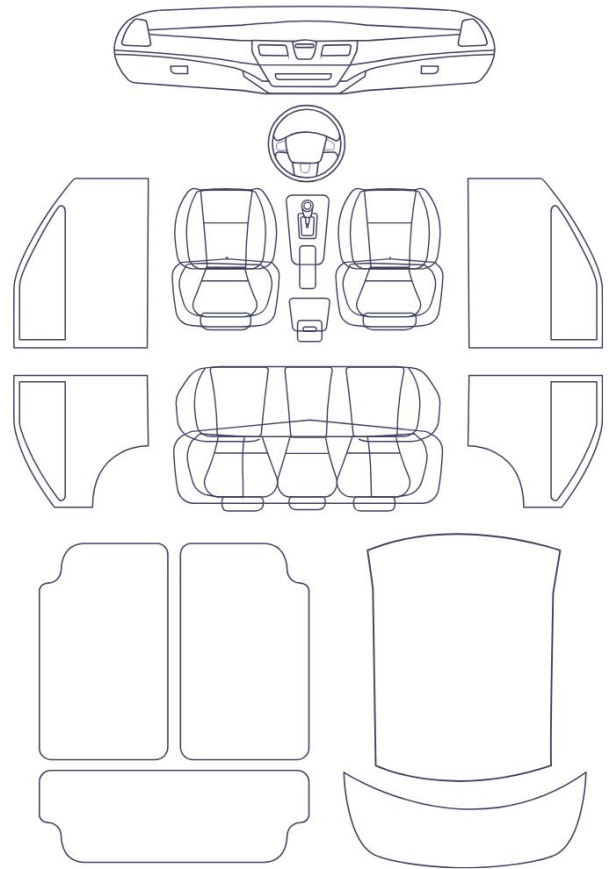
Extra Wheel - 1 Tyre Depth	7	Extra Wheel - 2 Tyre Depth	7
Extra Wheel - 3 Tyre Depth	8	Extra Wheel - 4 Tyre Depth	8
Right Front Tyre Depth	4	Left Front Tyre Depth	4
Right Rear Tyre Depth	5	Left Rear Tyre Depth	5

Cosmetic Damage

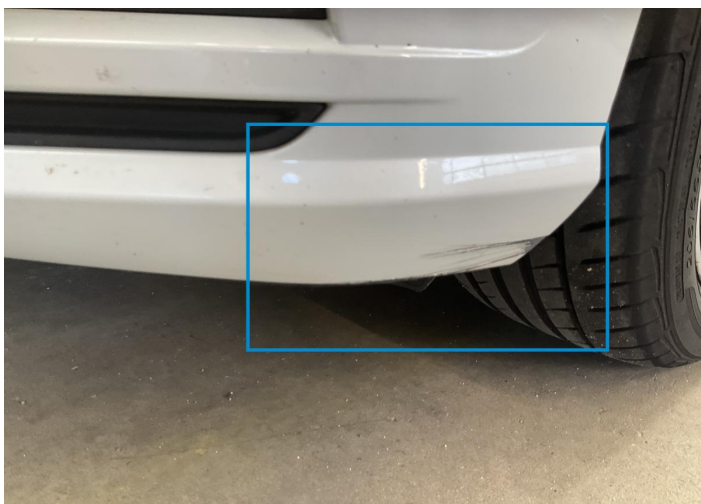
10 Schäden



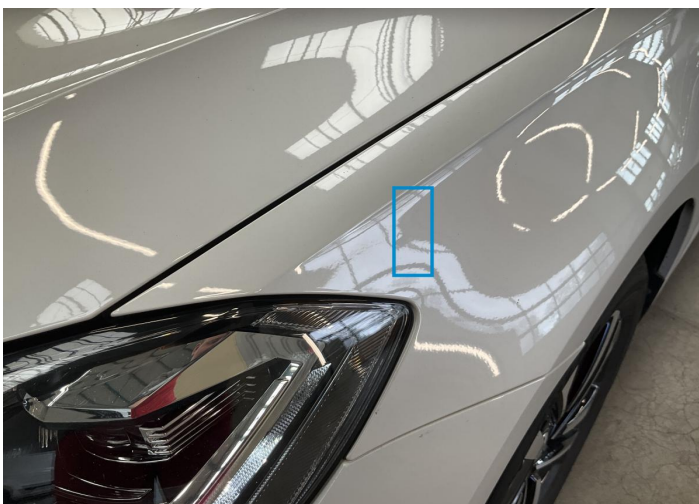
0 Schäden



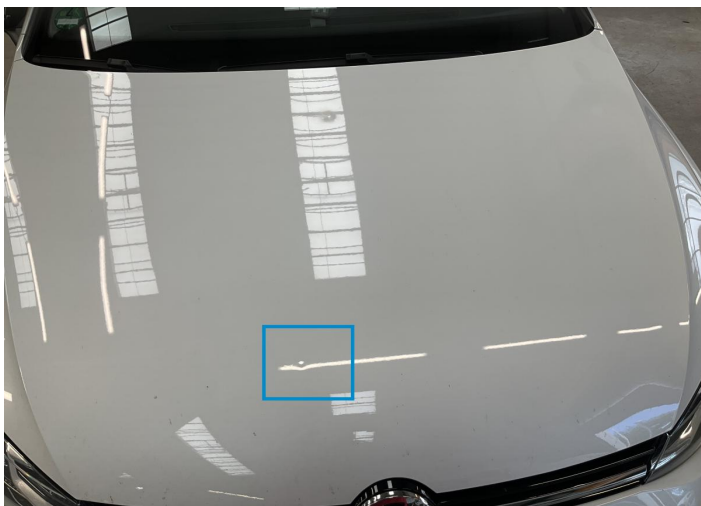
Component	Damage	Comments
1 Bumper / Front	Paint / Scratch / Scuff	
2 Fender / Front Left	Bodywork / Dent / Dent	
3 Hood	Bodywork / Dent / Dent	
4 Hood	Paint / Scratch / Scuff	
5 Rim / Front Right	Out of Bodywork / Scratch	
6 Bumper / Back	Bodywork / Breakage / Crack	
7 Bumper / Back	Missing Part	
8 Bumper / Back	Missing Part	
9 Side Panel / Back Left	Bodywork / Dent / Dent	
10 Rim / Front Left	Out of Bodywork / Scratch	



1. Bumper / Front
Paint / Scratch / Scuff -



2. Fender / Front Left
Bodywork / Dent / Dent -



3. Hood
Bodywork / Dent / Dent -



4. Hood
Paint / Scratch / Scuff -



5. Rim / Front Right
Out of Bodywork / Scratch -



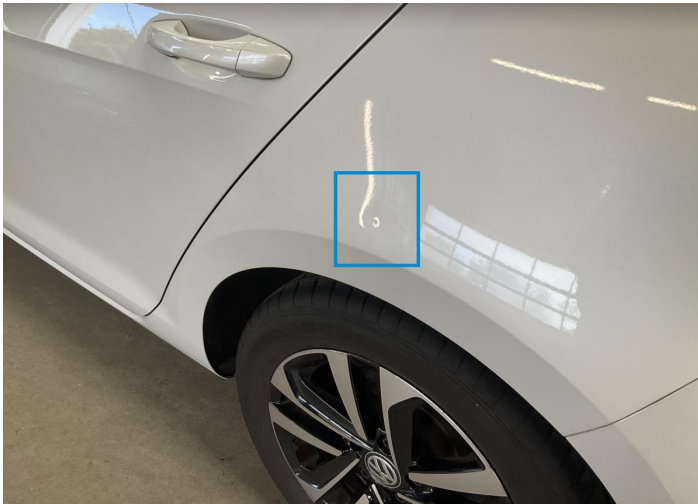
6. Bumper / Back
Bodywork / Breakage / Crack -



7. Bumper / Back
Missing Part -



8. Bumper / Back
Missing Part -



9. Side Panel / Back Left
Bodywork / Dent / Dent -



10. Rim / Front Left
Out of Bodywork / Scratch -

Mechanical Condition

Engine			
Engine Starts	✓	Engine Status / EML	!
Engine Leak Visible	✓		
Control Lights			
ABS Warning Light	✓	ESP Fault/Traction Control Malfunction Light	✓
Diesel Particulate Filter Light	✓	Airbag Warning Light	✓
Oil Pressure Warning Light	✓	Brake Warning Light	✓
Power Steering Warning Light	✓	Alternator / Battery	✓
No Dashboard Lights	✓	Display Defect	✓
Service Light	!	Tire Pressure Monitoring System	✓
Gearbox			
Gear Box	✓		
Equipments Test			
Other Equipments	✓	Central Locking	✓
Main & Spare Keys Functioning	✓	Electric Windows	✓
Navigation System	✓	Audio Equipment	✓
Parking Sensors / Cameras Functioning	✓	AC / Heating System	✓
Levels			
Brakes Fluid	✓	Coolant Fluid	✓

Test Drive Inspection

Engine

Fume Quantity	✓	Power Loss	✓
Engine Noise	✓	The Gears Scratch / Skip / Abnormal Operation	✓

Brake

Brake System Anomaly ✓

Steering Wheel

Steering | Noise / Anomaly ✓

General

Test Driven Status ✓

✓ *No troubles detected, good condition or correct tests, according to vehicle age and mileage*

! *Damages or malfunction detected that requires repairs by the buyer*

NA *Not applicable*

☐ *Not tested*

Disclaimer

Please also note the "UserGuide condition report", which shows the scope of the vehicle description.

[User Guide](#)