



Expertise

Protocol number: 41185188  
Order No. / Reference: 25096728  
Inspection date: 20 Aug 2025

Manufacturer: Volkswagen

Model: Golf 2.0 TDI SCR DSG Comfortline

VIN: WVGZZZAUZLP017482



Vehicle details	
Manufacturer / Type / Model / Equipment	
Volkswagen Golf 2.0 TDI SCR DSG Comfortline	
Vehicle Identification number	WVGZZZAUZLP017482
Mileage (Read)	105,399 km
First registration	16 Dec 2019
Number of holders	1
Next periodical technical inspection	12/2026
(Report on hand)	
Power / Engine displacement	110 kw / 1,968 ccm
Fuel type / Cylinder	Diesel / 4
Gearbox / Number of gears	Automatic / 7
Type of drive	Front drive
Type of vehicle	Saloon car
Colour / colour code	Atlantic Blue Metallic (C5B)
Doors / Seats	5 / 5
Upholstery type	Alcantara / cloth
Colour of upholstery	Black-Anthracite



## Vehicle details

<b>Maintenance booklet / proof</b>	digital proof / complete	<b>Next maintenance in</b>	11,600 km
<b>Last maintenance on / at</b>	03/2025 at 97,819 km		
<b>Key is / should be</b>	2 / 2	<b>FZG documents</b>	ZB#2 (B) was available (copy), ZB#1 (S) was not available
		<b>Letter No.</b>	FN599480
<b>Previous damage / Accident</b>	Detectable	<b>Repainting</b>	Detectable
<b>Inspection conditions</b>	sufficient	<b>Lifting equipment / pit</b>	yes
<b>Test drive</b>	Not performed	<b>Engine function test</b>	Performed
<b>Manufacturer key number/ type code number</b>	0603 / BJJ 00757		
<b>Emission standard</b>	EURO6;WLTP;DG;PI/CI; M, N1 I	<b>Fine dust sticker</b>	
<b>Permitted total weight</b>	1,960 kg	<b>Empty weight</b>	

## Tyres

### Mounted tyres

#	Tyre size	Type of tyre	Manufacturer	Tread depth
1)	205/55 R16 91W	Summer tyres on Light alloy	Dunlop	5mm / 5mm
2)	205/55 R16 91W	Summer tyres on Light alloy	Dunlop	7mm / 7mm

### Additional tyres

#	Tyre size	Type of tyre	Manufacturer	Tread depth
1)	205/55 R16 91H	Winter tyres on Light alloy	Bridgestone	7mm / 7mm
2)	205/55 R16 91H	Winter tyres on Light alloy	Bridgestone	8mm / 8mm

### Replacement

Typ	Tyre size	Type of tyre	Manufacturer	Tread depth
	Tirefit	Expiration date 09/2027		

**Legend:** Tread depth information for tires on the left is in the first place, for tires on the right is in the second place on the axle in the direction of travel

## Equipment

### Equipment

- Klimaautomatik

### Standard equipment

- |   |   |
|---|---|
| <ul style="list-style-type: none"> <li>• Shelves</li> <li>• Airbag: Head airbag system for front and rear passengers including front side airbags</li> <li>• Exterior mirrors electrically adjustable and heated with passenger mirror lowering</li> <li>• Chrome surround on the light rotary switch</li> <li>• Decorative inlays "Polar Night Black"</li> <li>• Dual-tone horn</li> <li>• Electronic differential lock XDS</li> <li>• Electronic stabilization program with counter-steering support</li> <li>• Transmission: 7-speed DSG</li> <li>• Rear window wiper with interval control</li> <li>• ISOFIX anchorage points</li> <li>• Headrests (3) rear</li> <li>• Front headrests</li> <li>• LED daytime running lights</li> <li>• Steering column with height and length adjustment</li> <li>• Reading lights, front (2) and rear (2)</li> <li>• Multifunction display "Plus"</li> <li>• Emergency braking assistant "Front Assist"</li> <li>• Wheels: Light alloy (4) "Hita" 6.5Jx16</li> <li>• LED taillights</li> <li>• Rear seat backrest asymmetrically split and foldable</li> <li>• Power steering</li> <li>• Seat covers in fabric</li> <li>• Seats: Lumbar supports in front</li> <li>• Start-stop system</li> <li>• 12 volt socket in the luggage compartment</li> <li>• Textile floor mats front and rear</li> <li>• Warning buzzer and light for unfastened front seat belts</li> <li>• Green heat-insulating glazing on the sides and rear, windscreen in heat-insulating glass</li> </ul> | <ul style="list-style-type: none"> <li>• Airbag for driver and front passenger with passenger airbag deactivation including knee airbag on driver's side</li> <li>• Version with 4 doors</li> <li>• Exterior mirror housings and door handles in body color</li> <li>• Brake light, third</li> <li>• Decorative inlays "New Brushed Dark Metal"</li> <li>• Diesel particulate filter and SCR catalyst</li> <li>• tachometer</li> <li>• Electronic parking brake including auto-hold function</li> <li>• Electric windows, front and rear</li> <li>• Luggage compartment cover</li> <li>• Rear window heated</li> <li>• Rear spoiler in body color</li> <li>• Instrument cluster with electronic speedometer, odometer, trip meter, tachometer</li> <li>• Black radiator grille with chrome strip</li> <li>• Steering wheel: Multifunction leather steering wheel for DSG, with shift paddles</li> <li>• Front center armrest with storage box and 2 rear air vents</li> <li>• Fatigue detection</li> <li>• Tire pressure monitoring indicator (passive)</li> <li>• Wheels: Tire Mobility Set</li> <li>• Rear seat bench undivided, backrest asymmetrically divided and foldable</li> <li>• Seat belts</li> <li>• Seats: Comfort seats in the front</li> <li>• Seats: Front seats height adjustable</li> <li>• Dust and pollen filter</li> <li>• Body-colored bumpers with chrome trim at the front</li> <li>• First aid kit, warning triangle and safety vest</li> <li>• Electronic immobilizer</li> <li>• Central locking without safe security, with radio remote control and 2 radio folding keys</li> </ul> |
|---|---|

### Extra equipment

- |  |   |
|--|---|
| <ul style="list-style-type: none"> <li>• "Comfort" telephone interface with inductive charging function (2 USB ports, also for iPod/iPhone, hands-free system, Secure Simple Pairing (SSP), Phone Book Access Profile (PBAP), telephone contacts with image display, telephone contact address data for use in navigation destination entry, wireless communication interface BLUETOOTH AUDIO, selection of audio files via TFT touchscreen, simultaneous connection of up to 2 telephones, storage integrated into the center console with connection to the exterior antenna and an inductive charging function with Qi standard)</li> </ul> | <ul style="list-style-type: none"> <li>• "Composition Media" radio (8 speakers, user interface with proximity sensor, CD drive, dual tuner with phase diversity for optimal radio reception, vehicle menu, speed-dependent volume adjustment, 3-way tone control, multi-color TFT display with touchscreen operation (screen diagonal 20.3 cm), MP3 playback function with track and album art display, SD card slot, telephone interface, USB interface also for iPod/iPhone)</li> </ul> |
|--|---|



- "Discover Media" navigation function for "Composition Media" (Car-Net "Guide&Inform", 1-year subscription; CD drive, dual tuner with phase diversity; map in 2.5D display (bird's eye view); 3-way sound control; 20.3 cm multicolor TFT display with touchscreen operation; MP3 playback function with title and album cover display; navigation for Europe on SD card; SD cards; telephone interface; USB interface, also for iPod, AUX-IN; dynamic route guidance via separate RDS TMC tuner; VW Media Control; FM radio reception; traffic sign display; special destinations)
- Active Info Display, multicolor (various info profiles selectable. The Active Info Display delivers data and information about the vehicle directly to the cockpit. The high-resolution 31.2 cm (12-inch) screen replaces the conventional speedometer and allows five different views to be ideally customized to personal needs. If desired, information such as driving, navigation, and assistance functions can also be integrated into the graphic areas of the speedometer and tachometer.
- Package: Light and Vision (automatic headlight control with daytime running lights - "Leaving home" function and manual "Coming home" function - "Light Assist" high beam control - automatically dimming interior mirror - rain sensor)
- Parking steering assistant "Park Assist" including parking aid (warning signals for obstacles in the front and rear areas - automatically steers the vehicle into parallel and perpendicular parking spaces and also parks out of parallel parking spaces)
- Air Care Climatronic air conditioning system with 2-zone temperature control and allergen filter (regulates the interior temperature according to the preselected desired temperature with automatic adjustment of the fan speed and operation of the air distribution flaps – ensures a pleasant climate with as little draft as possible in the passenger compartment in all operating and weather conditions)
- Car-Net "Guide & Inform" term 3 years (online information is transmitted directly to the car (navigation with POI search, Google Earth map service and Google Street View, online traffic information))
- Elimination of the lettering (for the model name on the tailgate)
- Package: Business Premium Package including navigation (DSG) (2 USB ports, also for iPod/iPhone, automatic distance control, ACC "stop&go" + speed, pedestrian detection, Guide & Inform 3 years, navigation system, Discover Media, Composition Media, automatic windshield washer fluid, headlight cleaning system, telephone interface, Comfort emergency brake system, front assistant, front seats with heated seats, height-adjustable driver's seat, ergoActive lumbar support, electric driver adjustment, massage function, sports seat, front seat center, front and outer rear seats in microfiber, "ArtVelours" warning light for washer fluid level.)
- Paint finish: metallic
- Traffic sign recognition

## Brief expert findings

Documents submitted	At the time of the inspection, the registration certificate Part 2 (letter) was available, but the registration certificate Part 1 (certificate) was not. (Copy)
VIN comparison	The vehicle identification number (VIN) was read from the vehicle and its conformity with the submitted documents was verified during the inspection by the undersigned.
Inspection	The inspection conditions were sufficient for the assessment of the vehicle. Lifting equipment and a pit were available for examining the vehicle.
Test drive	No test drive/maneuvering was carried out during the inspection of the vehicle.
Engine function test	An engine test run was performed.

## Value reducing factors

No.	Component group	Description
1	Door - front left side	Door - Scratch(es) - Smart repair
2	Mudguard - left side	Mudguard - left side - Scratch(es) - Paint
3	Front bumper	Front bumper - Scratched - Paint
4	Door - rear right side	Door ("Orangenhaut" erkennbar) - Unprofessionally repaired - Repair and paint
5	Door - front right side	Door ("Orangenhaut" erkennbar) - Unprofessionally repaired - Repair and paint
6	Bonnet	Bonnet - Scratch(es) - Paint



## Wear and tear

No.	Component group	Description
1	Vehicle glazing	Windscreen - Stone chips - No deduction

The vehicle shows signs of wear commensurate with its age and use.

## Previous damages

No.	Previous damage	Extent of damage (Net)
1	Side - left, Provided by user / customer, from 18 Sept 2023	641,96 €
2	Side right, Provided by user / customer, from 28 Apr 2021	687,73 €
3	Front, Side - left, Provided by user / customer, from 20 Mar 2021	1.715,93 €

## Repainting

No.	Repainting
1	Side panel - rear left side, Door - rear left side, Professionally carried out, Invoice of repair done Non-existent
2	Door - rear right side, Door - front right side, Unprofessionally carried out, Invoice of repair done Non-existent

## Paint coat thickness measurement

Side panel - rear left side	164 µm	Door - rear left side	179 µm
Door - rear right side	183 µm	Door - front right side	209 µm

## Order/Scope of order

The order was placed to prepare a sales report for the vehicle described. This includes the following:

- Description of core relevant information about the vehicle
- Documentation of equipment features  
(*Delivery by third-party service providers*)
- Documentation of damage, defects, missing parts
- Documentation of previous damage, unrepaired previous damage, repainting
- a brief visual or functional inspection of the equipment details if possible.  
(*Functional tests of driver assistance systems are not included in the scope of services!*)
- a photo documentation of the vehicle



## Basis for the order

This product is based on the Alphabet Fuhrpark GmbH guidelines for vehicle returns and valuations. The expert makes the explicit findings in each individual case objectively within the framework of the specified standards based on his or her own expertise.

The vehicle inspection takes place in a disassembled state.

Damage or defects that can only be detected during disassembly/diagnosis work or through advanced knowledge remain within the scope of the prognosis risk. An extended risk exists for concealed defects caused by fraudulent deception and not identifiable by the expert.

Damage or defects resulting from normal use or wear and tear of the vehicle will be accepted according to the applicable standard.

There was no explicit identification or monetary consideration of the expected features within the product.

Features which in their nature and severity slightly exceed normal use but do not constitute unacceptable damage will be documented and identified under signs of use if necessary.

Damage or defects which, according to the underlying standard, can no longer be attributed to normal use or wear and tear are listed in the product under "Depreciating Factors".

Depending on the product specification, a monetary ID can be provided. If this takes place, the costs can be 100% d or pro rata depending on the vehicle's age and mileage.

## Previous damages

According to available information previous damages were repaired at the vehicle. Traces of repairs, which allow conclusions about the area of repair, were not recognizable during the inspection.

## Comments

-Der beiliegende Winterradsatz ist nicht Bestandteil vom Auslieferungsumfang.

-Die Felgen vom Auslieferungsumfang-Sommerbereifung sind auf dem Winterradsatz montiert und dementsprechend die Zusatzfelgen auf dem Sommerradsatz.





Figure 1: Diagonal front (left)



Figure 2: Diagonal front (right)



Figure 3: Diagonal rear (left)



Figure 4: Diagonal rear (right)



Figure 5: Interior - front



Figure 6: Interior - rear





Figure 7: Instrument cluster



Figure 8: Instrument panel



Figure 9: interior 360° view



Figure 10: Cargo area

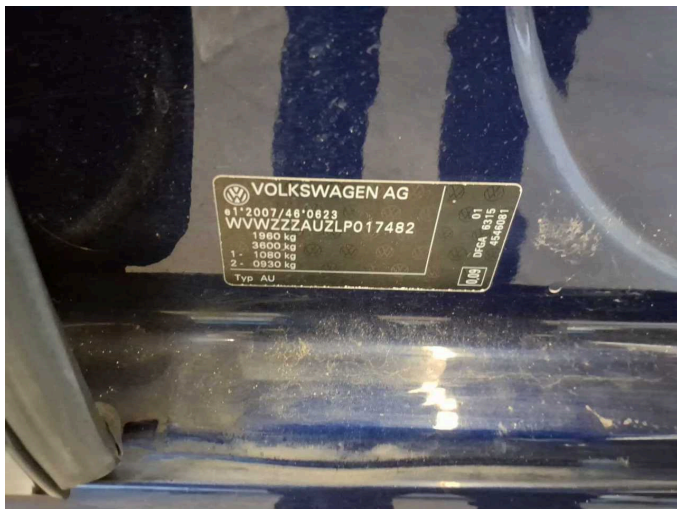


Figure 11: VIN



Figure 12: Mounted tyres



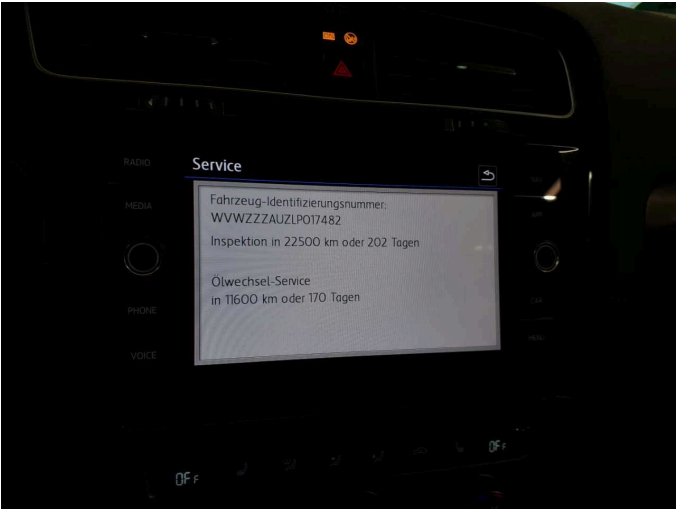


Figure 13: Documents



Figure 14: Documents

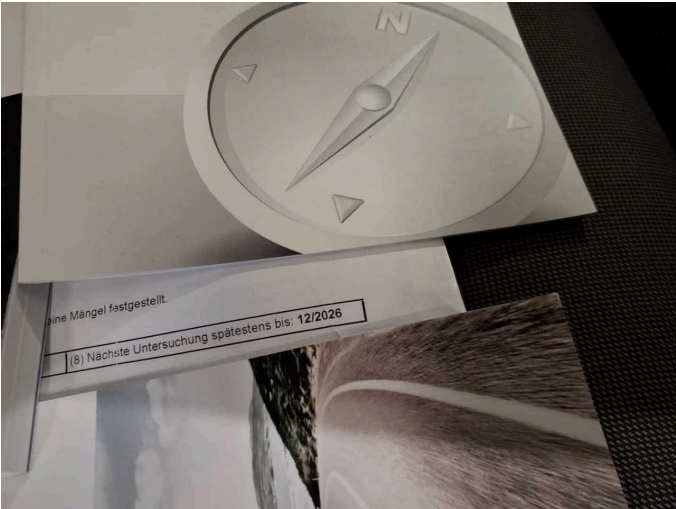


Figure 15: Documents



Figure 16: Additional tyres

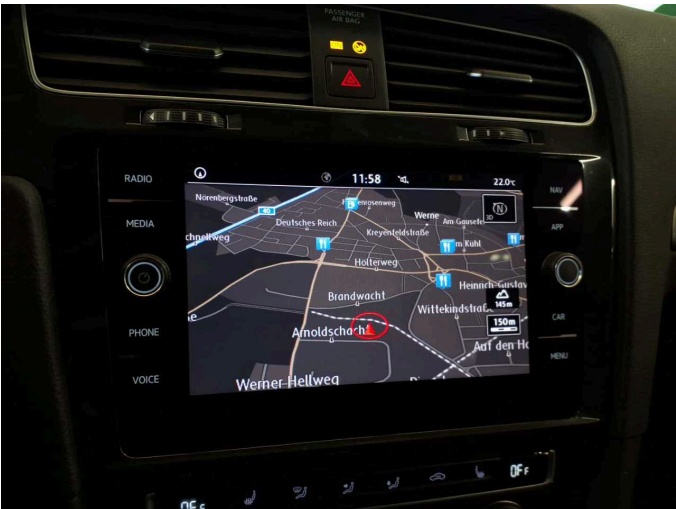


Figure 17: Navigation



Figure 18: Misc.



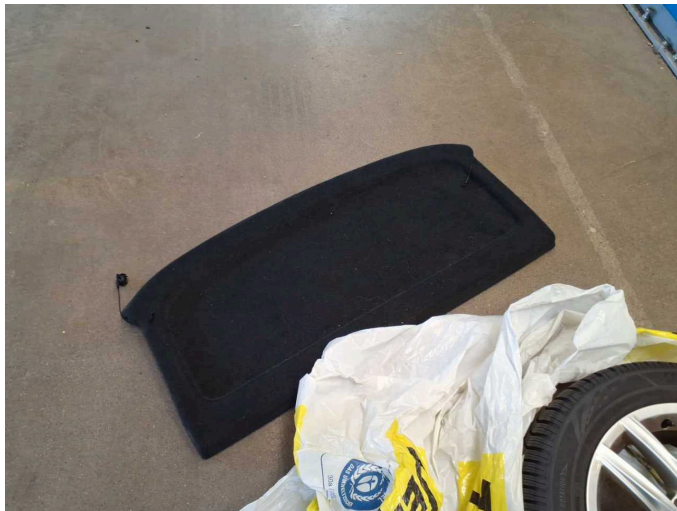


Figure 19: Misc.

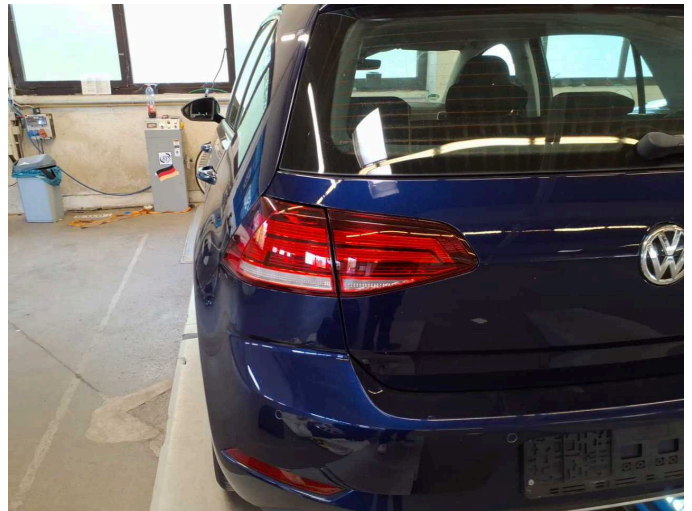


Figure 20: Misc.



Figure 21: Misc.



Figure 22: Misc.



Figure 23: Misc.



Figure 24: Misc.





Figure 25: Misc.



Figure 26: Misc.



Figure 27: Misc.

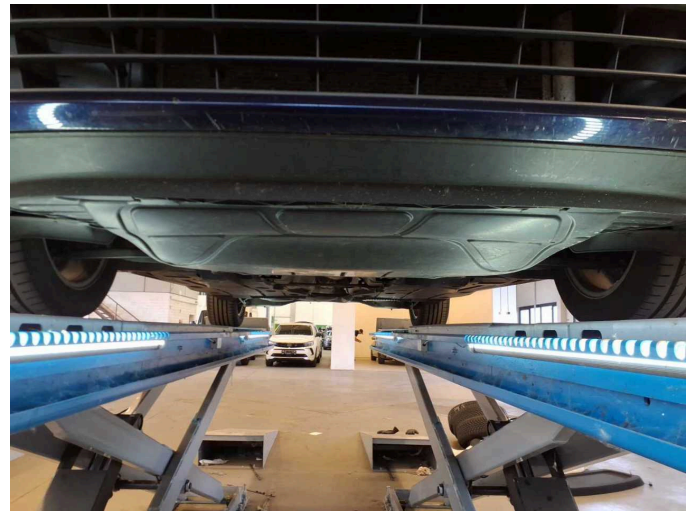


Figure 28: Misc.



Figure 29: Misc.



Damage 1: Door - front left side: Door - Scratch(es) - Smart repair





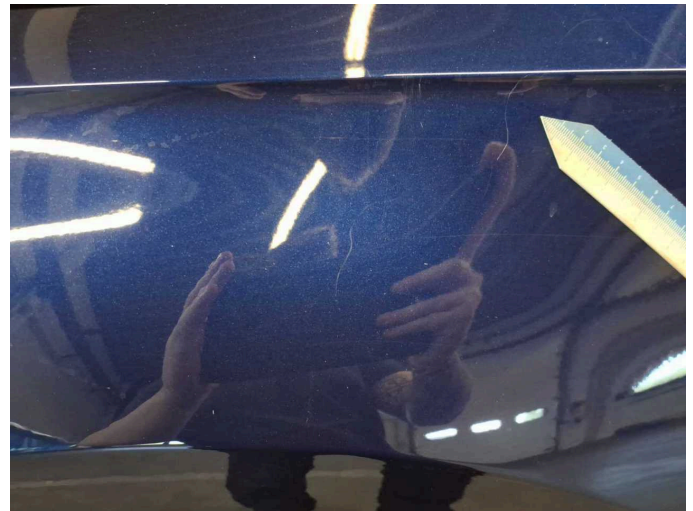
**Damage 1:** Door - front left side: Door - Scratch(es) - Smart repair



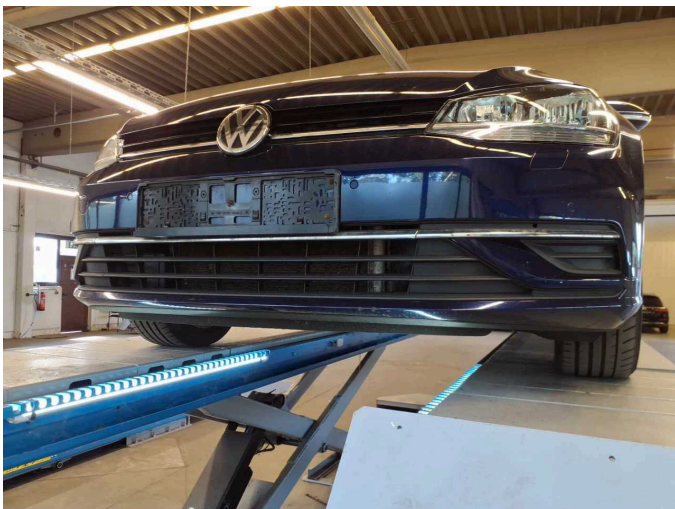
**Damage 2:** Mudguard - left side: Mudguard - left side - Scratch(es) - Paint



**Damage 2:** Mudguard - left side: Mudguard - left side - Scratch(es) - Paint



**Damage 2:** Mudguard - left side: Mudguard - left side - Scratch(es) - Paint



**Damage 3:** Front bumper: Front bumper - Scratched - Paint



**Damage 3:** Front bumper: Front bumper - Scratched - Paint





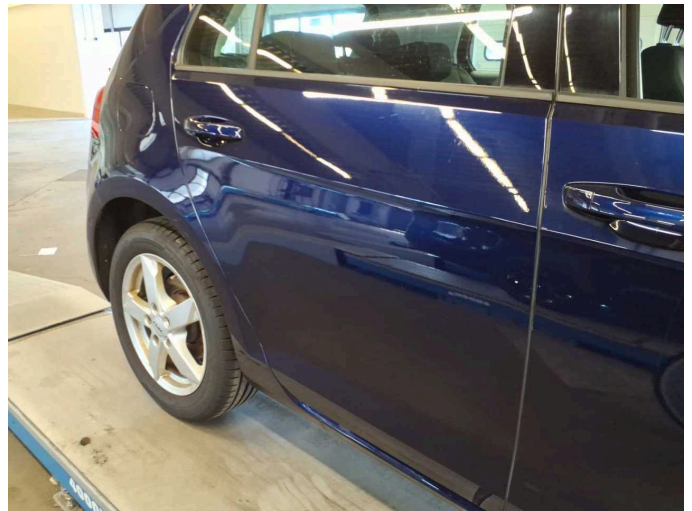
**Damage 3:** Front bumper: Front bumper - Scratched - Paint



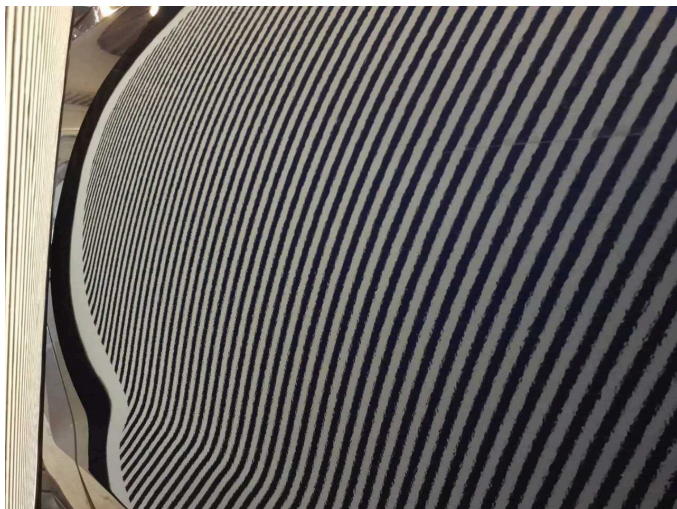
**Damage 3:** Front bumper: Front bumper - Scratched - Paint



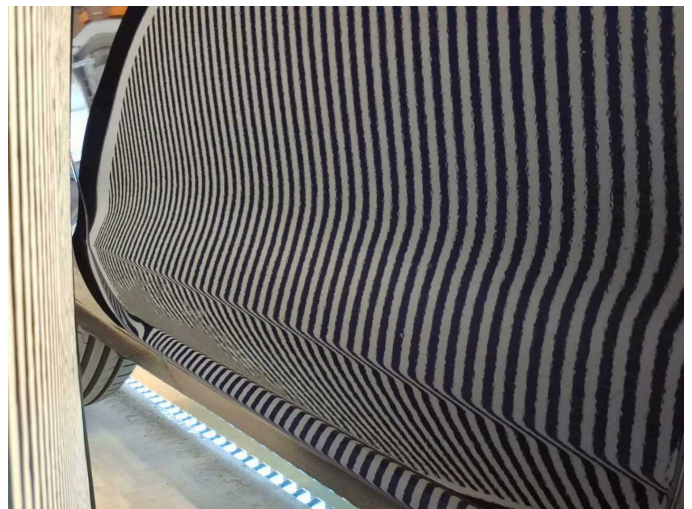
**Damage 3:** Front bumper: Front bumper - Scratched - Paint



**Damage 4:** Door - rear right side: Door ("Orangenhaut" erkennbar) - Unprofessionally repaired - Repair and paint



**Damage 4:** Door - rear right side: Door ("Orangenhaut" erkennbar) - Unprofessionally repaired - Repair and paint

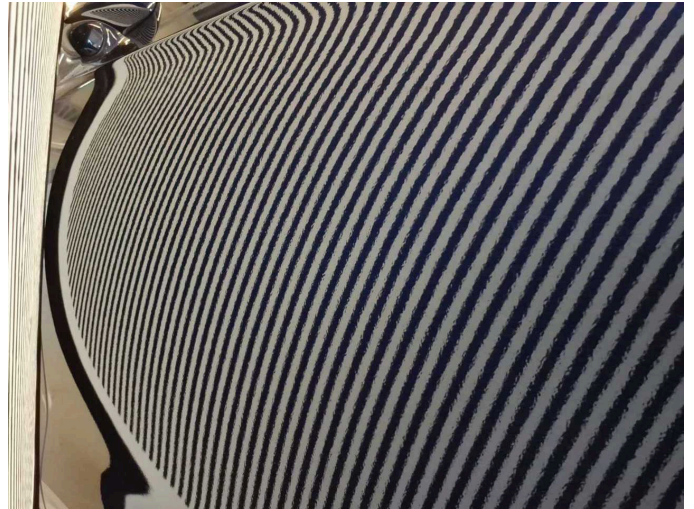


**Damage 4:** Door - rear right side: Door ("Orangenhaut" erkennbar) - Unprofessionally repaired - Repair and paint





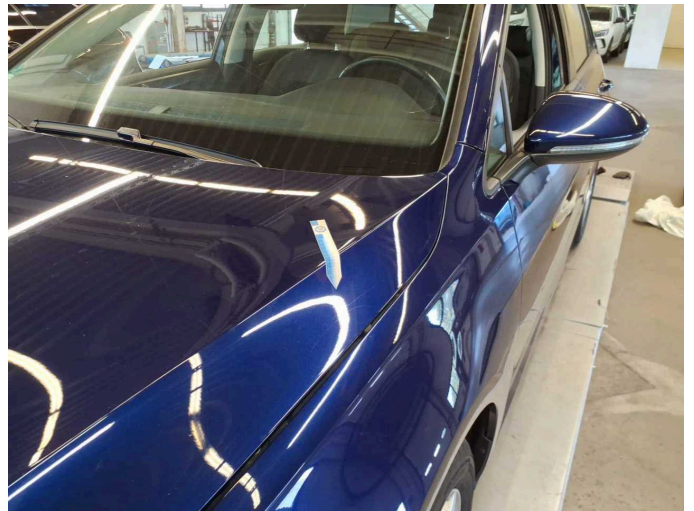
**Damage 5:** Door - front right side: Door ("Orangenhaut" erkennbar) - Unprofessionally repaired - Repair and paint



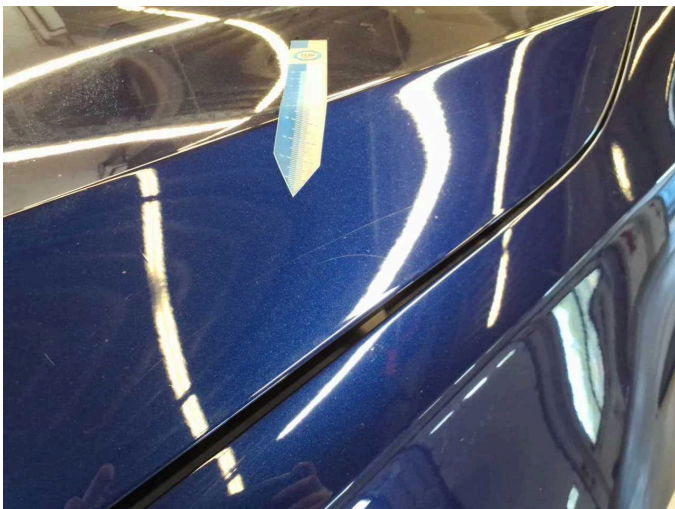
**Damage 5:** Door - front right side: Door ("Orangenhaut" erkennbar) - Unprofessionally repaired - Repair and paint



**Damage 5:** Door - front right side: Door ("Orangenhaut" erkennbar) - Unprofessionally repaired - Repair and paint



**Damage 6:** Bonnet: Bonnet - Scratch(es) - Paint



**Damage 6:** Bonnet: Bonnet - Scratch(es) - Paint



**Wear and tear 1:** Vehicle glazing: Windscreen - Stone chips - No deduction





**Wear and tear 1:** Vehicle glazing: Windscreen - Stone chips - No deduction



**Repainting 1:** Side panel - rear left side, Door - rear left side



**Repainting 1:** Side panel - rear left side, Door - rear left side



**Repainting 1:** Side panel - rear left side, Door - rear left side



**Repainting 1:** Side panel - rear left side, Door - rear left side



**Repainting 2:** Door - rear right side, Door - front right side



**Repainting 2:** Door - rear right side, Door - front right side



**Repainting 2:** Door - rear right side, Door - front right side



**Repainting 2:** Door - rear right side, Door - front right side





# Wartungshistorie

(gemäß Auftraggeber Informationen)

Fahrgestellnummer: WVVZZZAUZLP017482

Hersteller / Modell: VOLKSWAGEN VW Golf 2.0 TDI SCR DSG Comfortline

Datum	KM-Stand	Beschreibung
10.03.2025	97.819	Bremsflüssigkeit; Bremsflüssigkeit ern; Regelwartungsdienst
19.12.2024	94.420	AU
07.02.2024	86.929	Bremse Sonstiges; Bremsklötze hinten; Bremsklötze vorne; Bremsscheiben hinten; Bremsscheiben vorne; Kraftstofffilter ern; Luftfiltereinsatz ern; Motoröl b. Wartung; Ölfilter ern; Regelwartungsdienst; Systemtest/ Eigendiagnose; Wartung Sonstiges
13.12.2022	53.535	AU; Bremsflüssigkeit; Bremsflüssigkeit ern; Motoröl b. Wartung; Ölfilter ern; Regelwartungsdienst; Wartung Sonstiges
17.01.2022	31.870	Motoröl b. Wartung; Regelwartungsdienst