



VOLKSWAGEN Golf VII

Golf GTI (BlueMotion Technology)

VIN NO WVWZZZAUZJW152938
Registration Number UZJW152938



MOT Date	Number of Owners	Number of Keys	Odometer Reading
2027-02-01	2	1	129789 km
Last Service	Last Service Mileage	First Registration Date	Country First Registered
-	-	2017-12-21	Germany

Inspection Report Summary

Customer	BCA Online	Report Number	P20250923130903
Inspection Date / Place	2025-09-23 / HARTMANN Compound-Professionals GmbH Dorfmark	Cosmetic Grade	3

Vehicle Summary

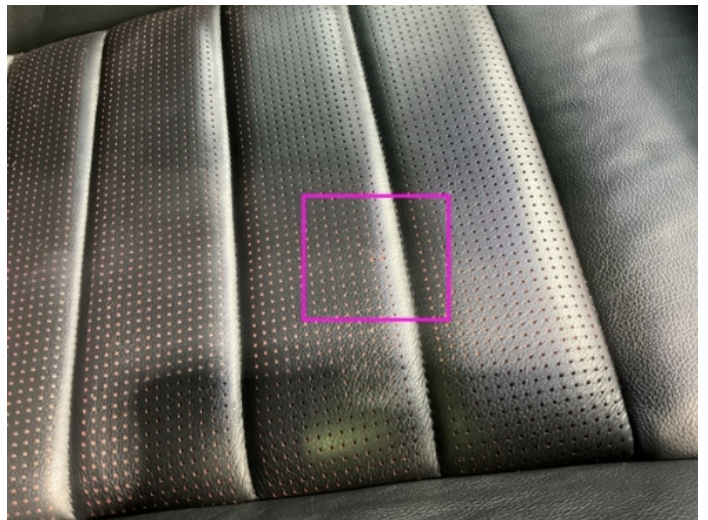
Vehicle Condition	Runner	VAT Type	Margin
Fuel Type	Petrol	Road Worthy	Yes
Colour	White	Engine Size (cc)	1984
Engine Size	2.0	No of Doors	5
Body Type	Sedan	Drive Train	Front
Seat Colour		No of Seats	5
Seat Covering Name	Schwarz	Seat Covering	Leather
Charging Cables		NEDC CO2 Rating (q/km)	148
Gearbox Type	Manual		

Vehicle History & Documents

Service Book Available	Missing	Next Service Mileage	km
Previous Usage		Imported	No
Manufacturer Warrenty			







Equipment

Trip Computer	Airbag Status	Anti-lock braking	Cruise control
Heated wing mirrors	Remote central locking	Stability control	Central locking
Leather steering wheel	Rear parking sensors	USB Socket	Alloys wheels
Bluetooth telephone interface	Front parking sensors	Remote adjusting wing mirrors	Satellite navigation
Sunroof	Electrically folding wing mirrors	Radio	

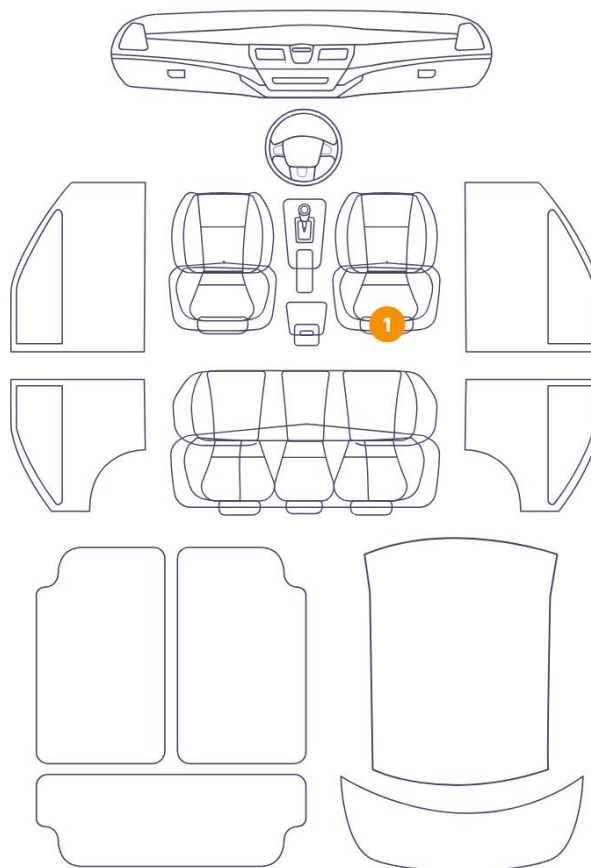
Equipment Details

Air Conditioning	Dual Zone Climate Control	Alloy Wheel Size	19
Seat Heating	Front	Sunroof Type	Tilt/Slide Glass

Wheels & Tyres

Right Rear Tyre Depth	4	Left Rear Tyre Depth	4
Right Front Tyre Depth	4	Left Front Tyre Depth	4

1 Damages

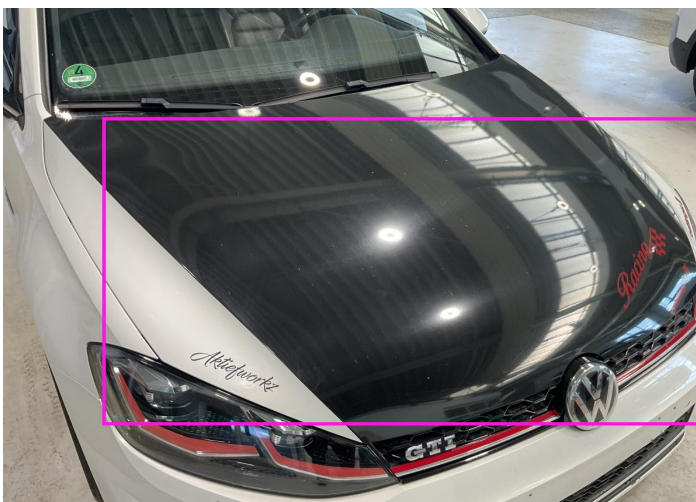
6/12 - Report Number P20250923130903

13 Seat / Front Right

Interior / Scratched



1. Rim / Front Right
Out of Bodywork / Scratch -



2. Hood
Paint / Stone Chip -



3. Door Handle / Front Right
Paint / Scratch / Line -



4. Side Panel / Back Right
Paint / Scratch / Line -



5. Rim / Back Right
Out of Bodywork / Scratch -



6. Bumper / Back
Paint / Scratch / Line -



7. Tailgate
Paint / Scratch / Line -



8. Rim / Back Left
Out of Bodywork / Scratch -



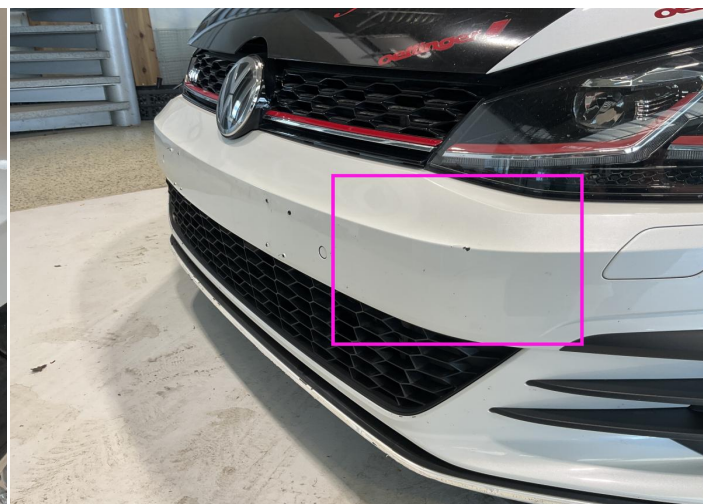
9. Door / Front Left
Paint / Chipping -



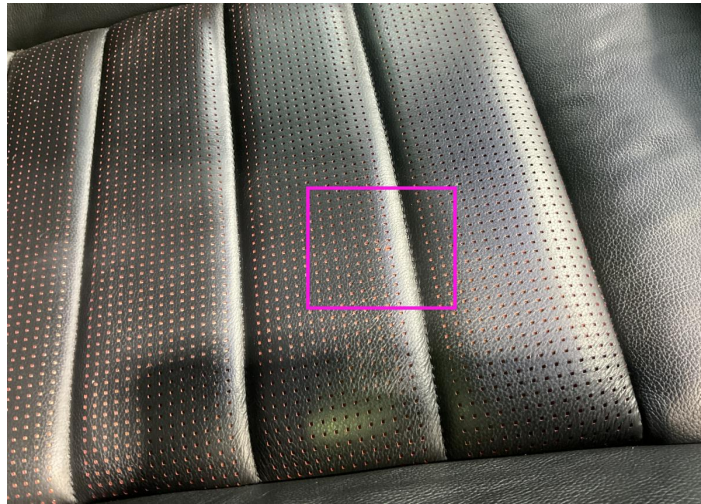
10. Rim / Front Left
Out of Bodywork / Scratch -



11. Corner Bumper / Front Left
Paint / Scratch / Scuff -



12. Bumper / Front
Paint / Stone Chip -



13. Seat / Front Right
Interior / Scratched -

Mechanical Condition

Equipments Test

Central Locking	✓	Electric Windows	✓
Navigation System	✓	AC / Heating System	✓
Main & Spare Keys Functioning	✓	Other Equipments	✓

Control Lights

ABS Warning Light	✓	ESP Fault/Traction Control Malfunction Light	✓
Airbag Warning Light	✓	Oil Pressure Warning Light	✓
Brake Warning Light	✓	Power Steering Warning Light	✓
Alternator / Battery	✓	No Dashboard Lights	✓
Display Defect	✓	Service Light	✓
Tire Pressure Monitoring System	✓		

Engine

Engine Status / EML	✓	Engine Leak Visible	✓
Engine Starts	✓		

Levels

Brakes Fluid	✓	Coolant Fluid	✓
--------------	---	---------------	---

Test Drive Inspection

Steering Wheel

Steering | Noise / Anomaly ✓

Engine

Engine Noise ✓ Fume Quantity ✓

Power Loss ✓

Brake

Brake System Anomaly ✓

Clutch

Clutch Functioning ✓

General

Test Driven Status Not Performed

- ✓ No troubles detected, good condition or correct tests, according to vehicle age and mileage
- ! Damages or malfunction detected that requires repairs by the buyer
- NA Not applicable
- ☐ Not tested

Disclaimer

Please also note the "UserGuide condition report", which shows the scope of the vehicle description. [User Guide](#)