



# VOLKSWAGEN Golf VII

## Golf Sportsvan 1.4 TSI BlueMotion Technology DSG

VIN NO WVWZZZAUZGW593889  
Registration Number UZGW593889



MOT Date	Number of Owners	Number of Keys	Odometer Reading
-	1	2	183459 km
Last Service	Last Service Mileage	First Registration Date	Country First Registered
2025-04-22	174396	2016-04-26	-

### Inspection Report Summary

Customer	BCA Online	Report Number	P20250926091033
Inspection Date / Place	2025-09-26 / Extern	Cosmetic Grade	3

### Vehicle Summary

Vehicle Condition	Runner	VAT Type	Margin
Fuel Type	Petrol	Road Worthy	Yes
Colour	Silver	Engine Size (cc)	1395
Engine Size	1.4	No of Doors	5
Body Type	Stationwagon / Estate	Drive Train	Front
Seat Colour		No of Seats	5
Seat Covering Name	Schwarz	Seat Covering	Cloth
Charging Cables		NEDC CO2 Rating (q/km)	120
Gearbox Type	Automatic		

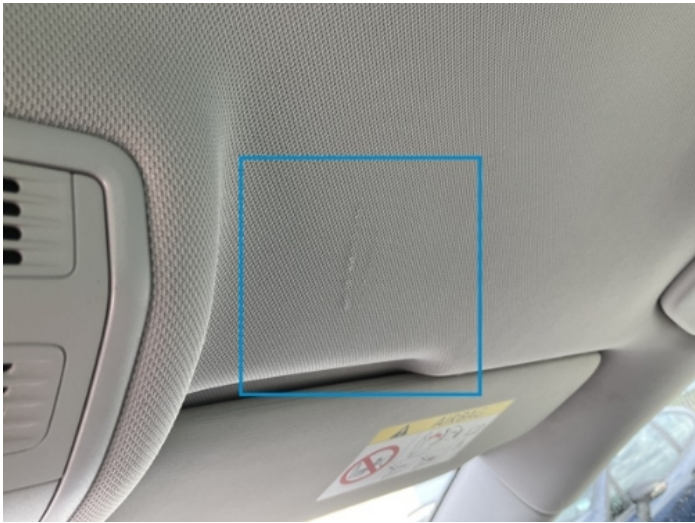
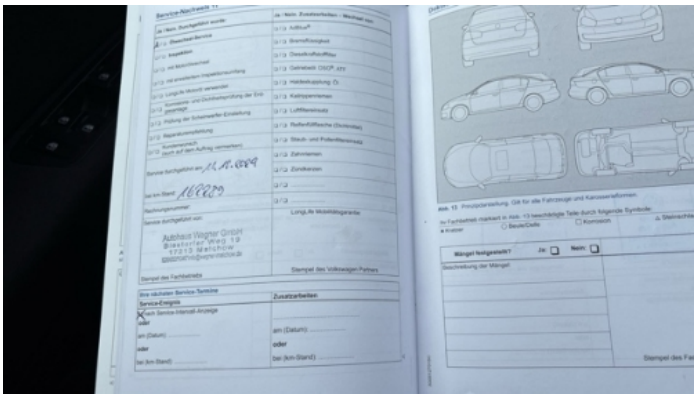
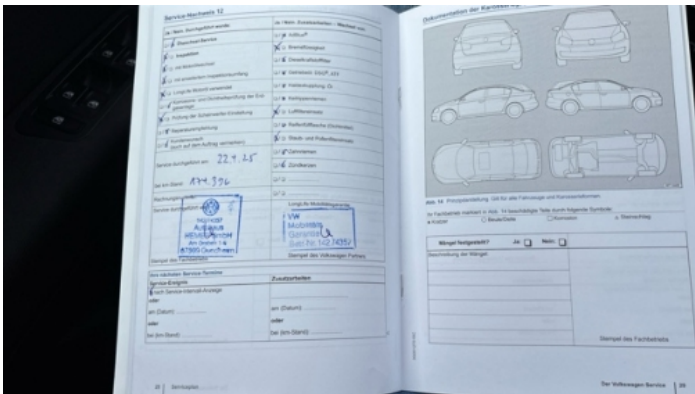
### Vehicle History & Documents

Service Book Available	Present	Next Service Mileage	km
Previous Usage		Imported	No
Manufacturer Warrenty			











Equipment

Tinted Glass	Alloys wheels	Auxiliary Socket	Cruise control
Headlamp wash/wipe	Remote adjusting wing mirrors	Roof rails	Stability control
Electrically folding wing mirrors	Radio	Rear parking sensors	Airbag Status
Anti-lock braking	Bluetooth telephone interface	Front parking sensors	Heated wing mirrors
Remote central locking	Split folding rear seats	CD Player	Leather steering wheel
Rain sensitive windscreen wipers			

Equipment Details

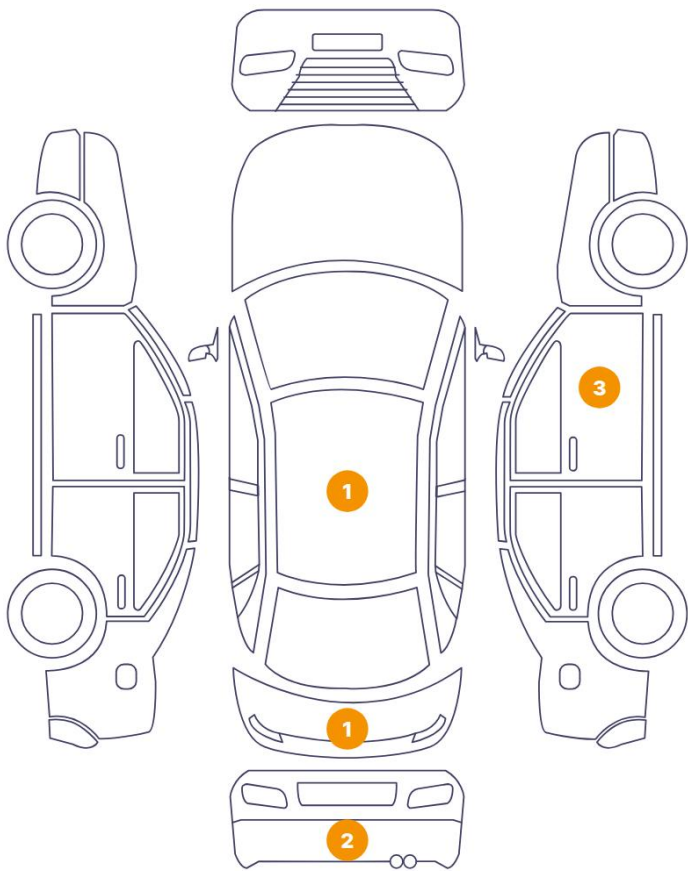
Air Conditioning	Dual Zone Climate Control	Alloy Wheel Size	16
Seat Heating	Front		

Wheels & Tyres

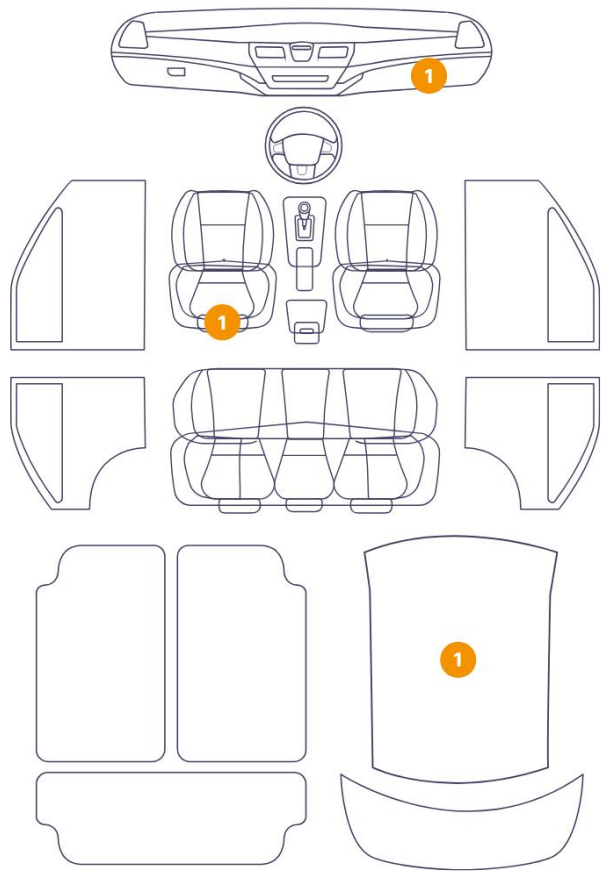
Left Rear Tyre Depth	5	Right Rear Tyre Depth	5
Left Front Tyre Depth	5	Right Front Tyre Depth	5

Cosmetic Damage

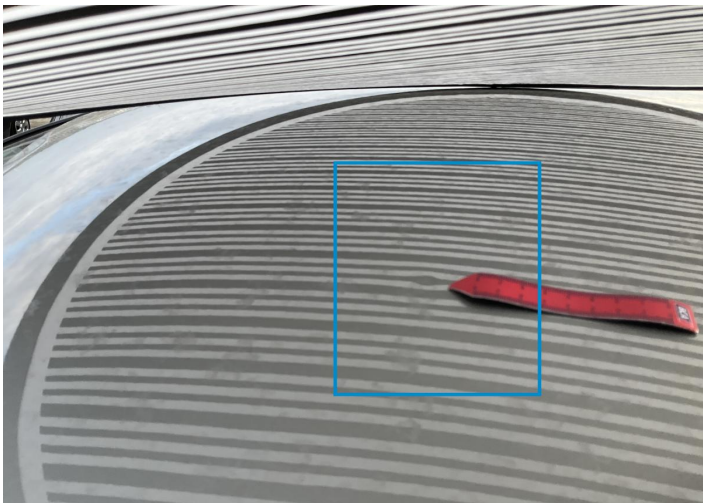
7 Schäden



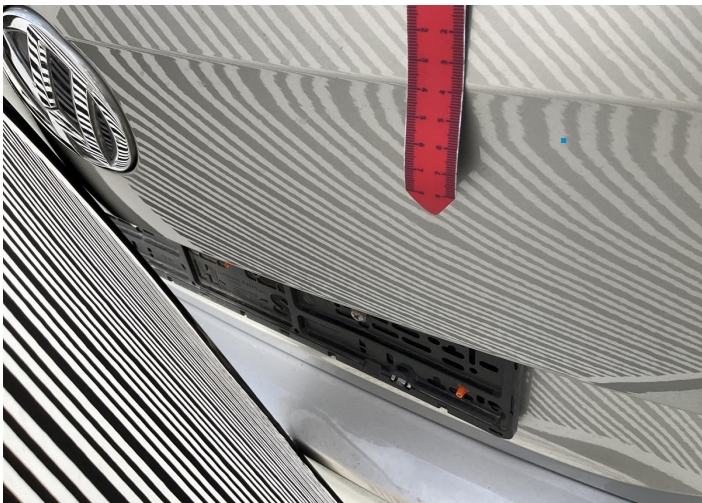
3 Schäden



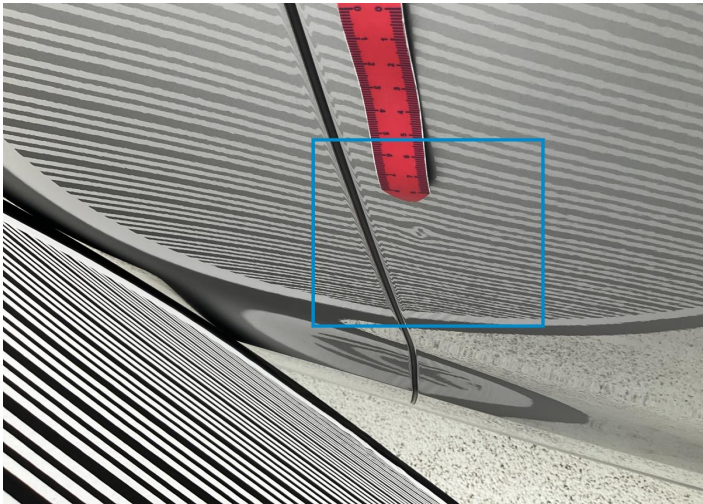
Component		Damage	Comments
1	Roof	Bodywork / Dent / Deformation	
2	Tailgate	Bodywork / Dent / Deformation	
3	Door / Front Right	Bodywork / Dent / Deformation	
4	Mirror Repeater / Right	Bodywork / Breakage	
5	Mirror / Front Right	Paint / Scratch / Scuff	
6	Bumper / Back	Paint / Scratch / Scuff	
7	Bumper / Back	Paint / Scratch / Scuff	
8	Seat / Front Left	Interior / Worn - out	
9	Dashboard / Front	Interior / Dirty	
10	Roof Upholstery	Interior / Scratched	



1. Roof  
Bodywork / Dent / Deformation -



2. Tailgate  
Bodywork / Dent / Deformation -



3. Door / Front Right  
Bodywork / Dent / Deformation -



4. Mirror Repeater / Right  
Bodywork / Breakage -



5. Mirror / Front Right  
Paint / Scratch / Scuff -



6. Bumper / Back  
Paint / Scratch / Scuff -





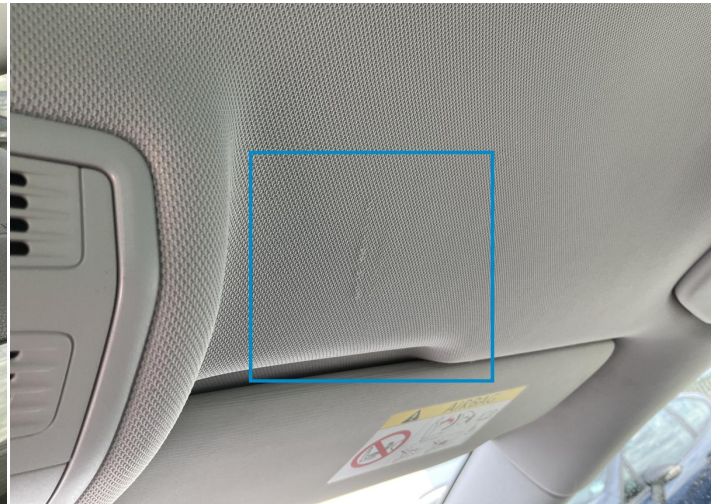
7. Bumper / Back  
Paint / Scratch / Scuff -



8. Seat / Front Left  
Interior / Worn - out -



9. Dashboard / Front  
Interior / Dirty -



10. Roof Upholstery  
Interior / Scratched -



## Mechanical Condition

### Control Lights

ABS Warning Light	✓	ESP Fault/Traction Control Malfunction Light	✓
Airbag Warning Light	✓	Brake Warning Light	✓
Alternator / Battery	✓	No Dashboard Lights	✓
Service Light	✓	Oil Pressure Warning Light	✓
Power Steering Warning Light	✓		

### Engine

Engine Status / EML	✓	Engine Leak Visible	✓
Engine Starts	✓		

### Equipments Test

Central Locking	✓	Main & Spare Keys Functioning	!
Electric Windows	✓	Audio Equipment	✓
Parking Sensors / Cameras Functioning	✓	AC / Heating System	✓
Other Equipments	✓		

### Gearbox

Gear Box	✓
----------	---

### Levels

Brakes Fluid	✓	Coolant Fluid	✓
--------------	---	---------------	---

Test Drive Inspection

Brake			
Brake System Anomaly		✓	
Steering Wheel			
Steering   Noise / Anomaly		✓	
Engine			
Engine Noise	✓	The Gears Scratch / Skip / Abnormal Operation	✓
Fume Quantity	✓	Power Loss	✓
General			
Test Driven Status		✓	
✓ No troubles detected, good condition or correct tests, according to vehicle age and mileage			
! Damages or malfunction detected that requires repairs by the buyer			
NA Not applicable			
= Not tested			

Disclaimer

Please also note the "UserGuide condition report", which shows the scope of the vehicle description.

[User Guide](#)