



# VOLKSWAGEN Golf VII

## Golf Sportsvan 1.4 TSI (BlueMotion Technology) DSG

VIN NO WVWZZZAUZGW570649  
Registration Number UZGW570649



MOT Date

2025-05-01

Last Service

2025-07-23

Number of Owners

1

Last Service Mileage

189388

Number of Keys

2

First Registration Date

2016-02-19

Odometer Reading

190230 km

Country First Registered

Germany

### Inspection Report Summary

Customer	BCA Online	Report Number	P20250924112132
Inspection Date / Place	2025-09-24 / BCA Oberndorf	Cosmetic Grade	5

### Vehicle Summary

Vehicle Condition	Runner	VAT Type	Margin
Fuel Type	Petrol	Road Worthy	Yes
Colour	White	Engine Size (cc)	1395
Engine Size	1.4	No of Doors	5
Body Type	Stationwagon / Estate	Drive Train	Front
Seat Colour		No of Seats	5
Seat Covering Name		Seat Covering	Cloth
Charging Cables		NEDC CO2 Rating (q/km)	120
Gearbox Type	Automatic		

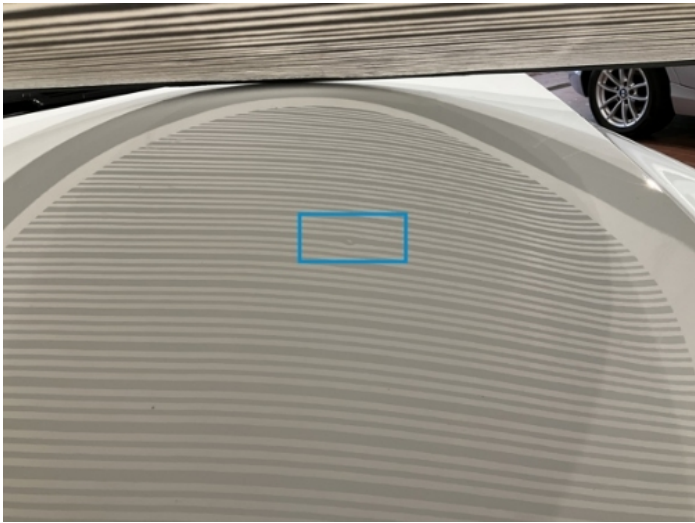
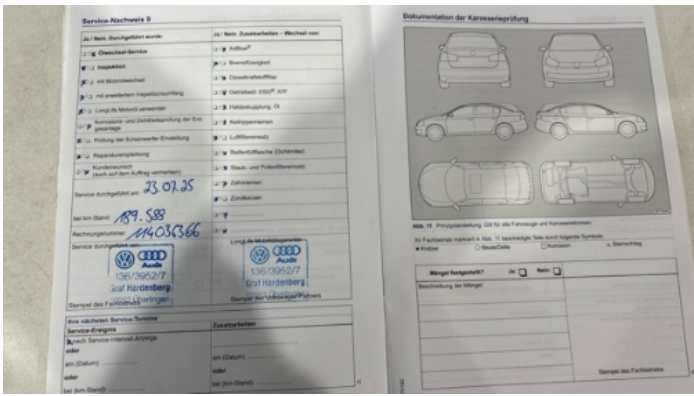
### Vehicle History & Documents

Service Book Available	Present	Next Service Mileage	km
Previous Usage		Imported	No
Manufacturer Warrenty			









Equipment

Tinted Glass	Airbag Status	Anti-lock braking	Bluetooth telephone interface
Front fog lamps	Heated wing mirrors	Remote central locking	Stability control
Electrically folding wing mirrors	Radio	USB Socket	Alloys wheels
Auxiliary Socket	Cruise control	Front parking sensors	Remote adjusting wing mirrors
Split folding rear seats	Xenon headlamps	Leather steering wheel	Rear parking sensors

Equipment Details

Air Conditioning	Dual Zone Climate Control	Alloy Wheel Size	15
Extra Wheel / Tyre Set	Winter Tyres - Steel	Seat Heating	Front

Wheels & Tyres

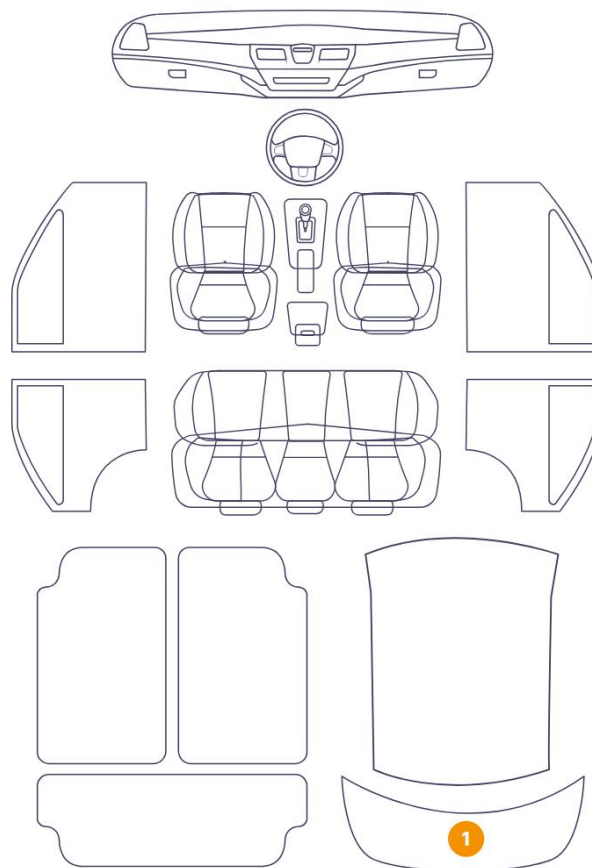
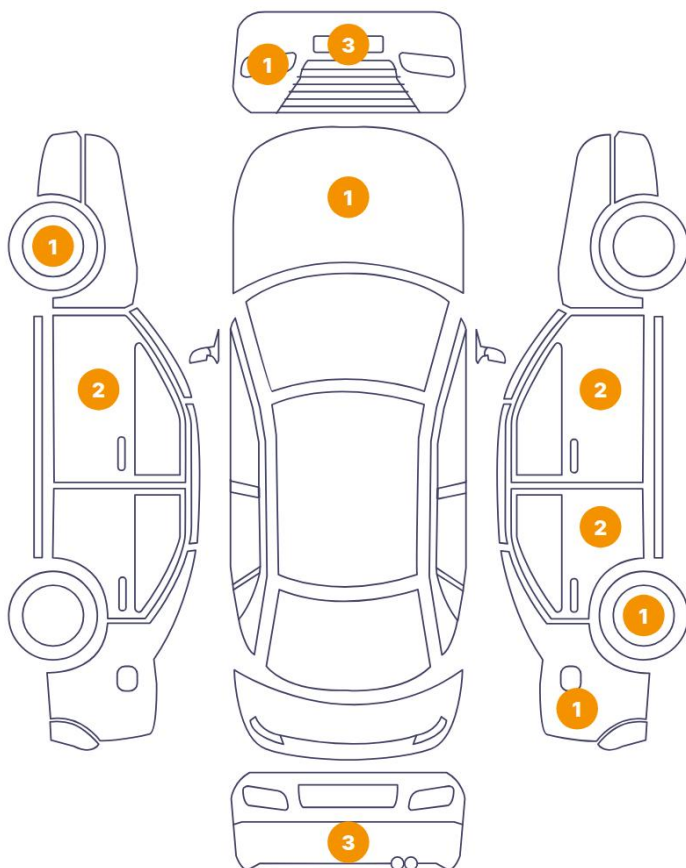
Extra Wheel - 1 Tyre Depth	2	Extra Wheel - 2 Tyre Depth	3
Extra Wheel - 3 Tyre Depth	5	Extra Wheel - 4 Tyre Depth	5
Right Front Tyre Depth	6	Left Front Tyre Depth	6
Right Rear Tyre Depth	5	Left Rear Tyre Depth	5



## Cosmetic Damage

17 Schäden

1 Schäden



	Component	Damage	Comments
1	Tailgate Upholstery / Back	Interior / Dented	
2	Pillar / Back Right	Bodywork / Dent / Dent	
3	Door / Front Right	Paint / Poor Previous Repair	
4	Door / Back Right	Paint / Poor Previous Repair	
5	Side Panel / Back Right	Paint / Poor Previous Repair	
6	Door / Front Left	Paint / Scratch / Scuff	
7	Door / Front Left	Bodywork / Dent / Dent	
8	Bumper / Front	Bodywork / Breakage / Crack	
9	Bumper / Front	Paint / Scratch / Scuff	
10	Grille / Front	Bodywork / Breakage / Hole	
11	Rim / Front Left	Out of Bodywork / Scratch	
12	Mirror Repeater / Right	Bodywork / Breakage / Crack	

13	Rim / Back Right	Out of Bodywork / Scratch
14	Bumper / Back	Bodywork / Dent / Dent
15	Bumper / Back	Bodywork / Dent / Dent
16	Bumper / Back	Paint / Scratch / Scuff
17	Hood	Bodywork / Dent / Dent
18	Front Light / Front Left	Glass Break



1. Tailgate Upholstery / Back Interior / Dented -



2. Pillar / Back Right Bodywork / Dent / Dent -



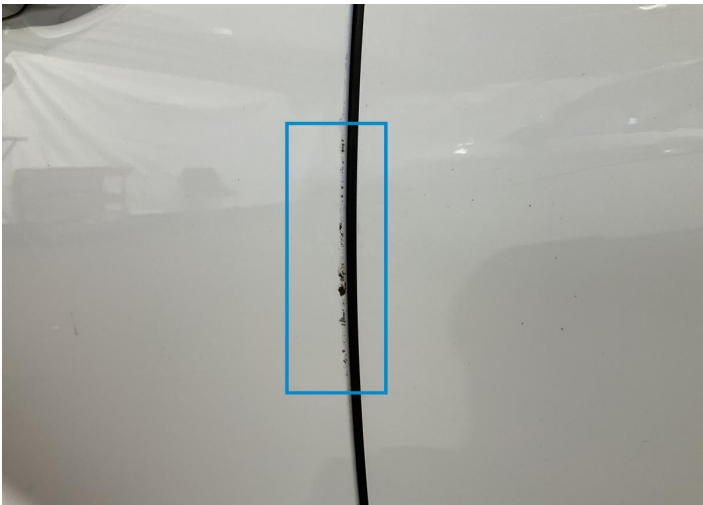
3. Door / Front Right Paint / Poor Previous Repair -



4. Door / Back Right Paint / Poor Previous Repair -



5. Side Panel / Back Right Paint / Poor Previous Repair -

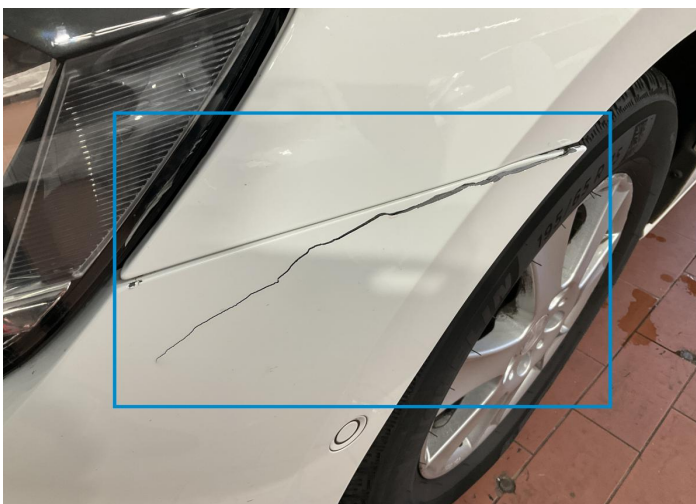


6. Door / Front Left Paint / Scratch / Scuff -





7. Door / Front Left  
Bodywork / Dent / Dent -



8. Bumper / Front  
Bodywork / Breakage / Crack -



9. Bumper / Front  
Paint / Scratch / Scuff -



10. Grille / Front  
Bodywork / Breakage / Hole -



11. Rim / Front Left  
Out of Bodywork / Scratch -

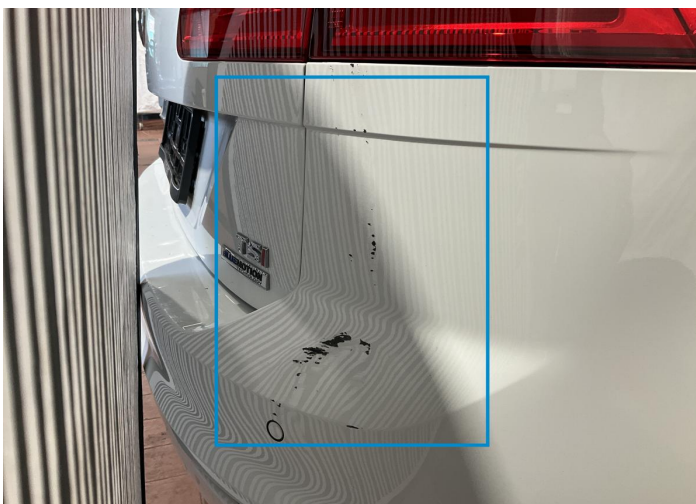


12. Mirror Repeater / Right  
Bodywork / Breakage / Crack -





13. Rim / Back Right  
Out of Bodywork / Scratch -



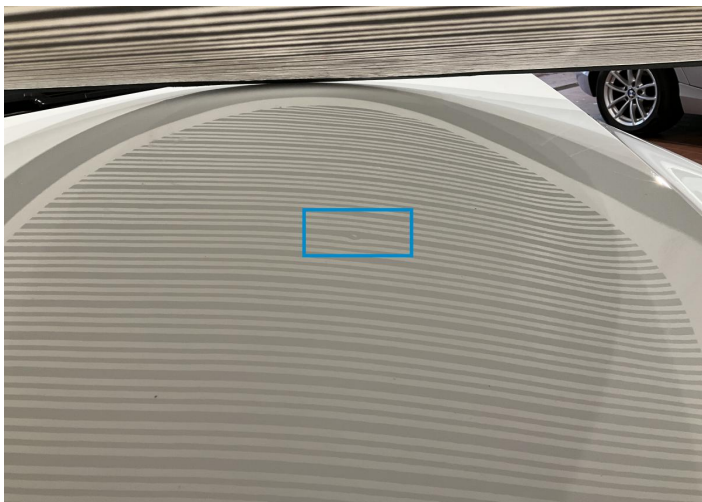
14. Bumper / Back  
Bodywork / Dent / Dent -



15. Bumper / Back  
Bodywork / Dent / Dent -



16. Bumper / Back  
Paint / Scratch / Scuff -



17. Hood  
Bodywork / Dent / Dent -



18. Front Light / Front Left  
Glass Break -

## Mechanical Condition

### Equipments Test

Central Locking	✓	Electric Windows	✓
Audio Equipment	✓	AC / Heating System	✓
Parking Sensors / Cameras Functioning	✓		

### Control Lights

ABS Warning Light	✓	ESP Fault/Traction Control Malfunction Light	✓
Airbag Warning Light	✓	Oil Pressure Warning Light	✓
Brake Warning Light	✓	Power Steering Warning Light	✓
Alternator / Battery	✓	No Dashboard Lights	✓
Display Defect	✓	Service Light	✓

### Engine

Engine Status / EML	✓	Engine Leak Visible	✓
Engine Starts	✓		

### Gearbox

Gear Box	✓
----------	---

### Levels

Brakes Fluid	✓	Coolant Fluid	✓
--------------	---	---------------	---

## Test Drive Inspection

### Steering Wheel

Steering   Noise / Anomaly	✓
----------------------------	---

### Engine

Engine Noise	✓	Fume Quantity	✓
Power Loss	✓		

### General

Test Driven Status	Not Performed
--------------------	---------------



- ✔ *No troubles detected, good condition or correct tests, according to vehicle age and mileage*
- ❗ *Damages or malfunction detected that requires repairs by the buyer*
- NA *Not applicable*
- ☐ *Not tested*

## Disclaimer

---

*Please also note the "UserGuide condition report", which shows the scope of the vehicle description.*

[User Guide](#)