



VOLKSWAGEN Golf VII

Golf 1.4 TSI BlueMotion Technology

VIN NO WVWZZZAUZFW033199
Registration Number UZFW033199



MOT Date

2025-05-01

Last Service



Number of Owners

3

Last Service Mileage



Number of Keys

1

First Registration Date

2014-07-17

Odometer Reading

156196 km

Country First Registered

Germany

Inspection Report Summary

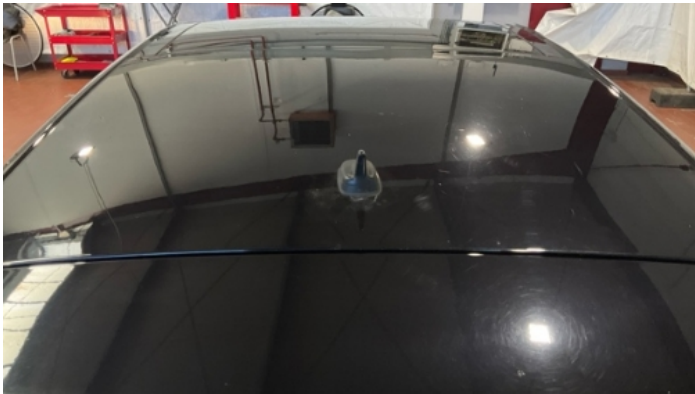
Customer	BCA Online	Report Number	P20250512091123
Inspection Date / Place	2025-05-12 / BCA Oberndorf	Cosmetic Grade	3

Vehicle Summary

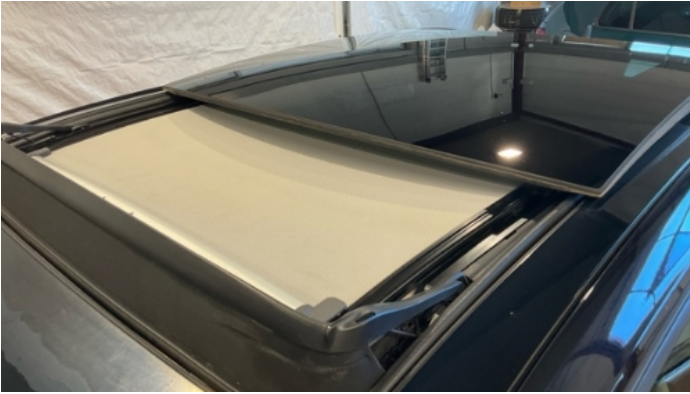
Vehicle Condition	Runner	VAT Type	Margin
Fuel Type	Petrol	Road Worthy	Yes
Colour	Black	Engine Size (cc)	1395
Engine Size	1.4	No of Doors	5
Body Type	Sedan	Drive Train	Front
Seat Colour		No of Seats	5
Seat Covering Name	Schwarz	Seat Covering	Cloth
Charging Cables		NEDC CO2 Rating (q/km)	120
Gearbox Type	Manual		

Vehicle History & Documents

Service Book Available	Missing	Next Service Mileage	km
Previous Usage		Imported	No
Manufacturer Warrenty			







Equipment

Tinted Glass	Airbag Status	Anti-lock braking	Cruise control
Headlamp wash/wipe	Remote adjusting wing mirrors	Satellite navigation	Stability control
CD Player	Leather steering wheel	Rear parking sensors	Trip Computer
Alloys wheels	Bluetooth telephone interface	Front parking sensors	Heated wing mirrors
Remote central locking	Split folding rear seats	Sunroof	Electrically folding wing mirrors

Radio

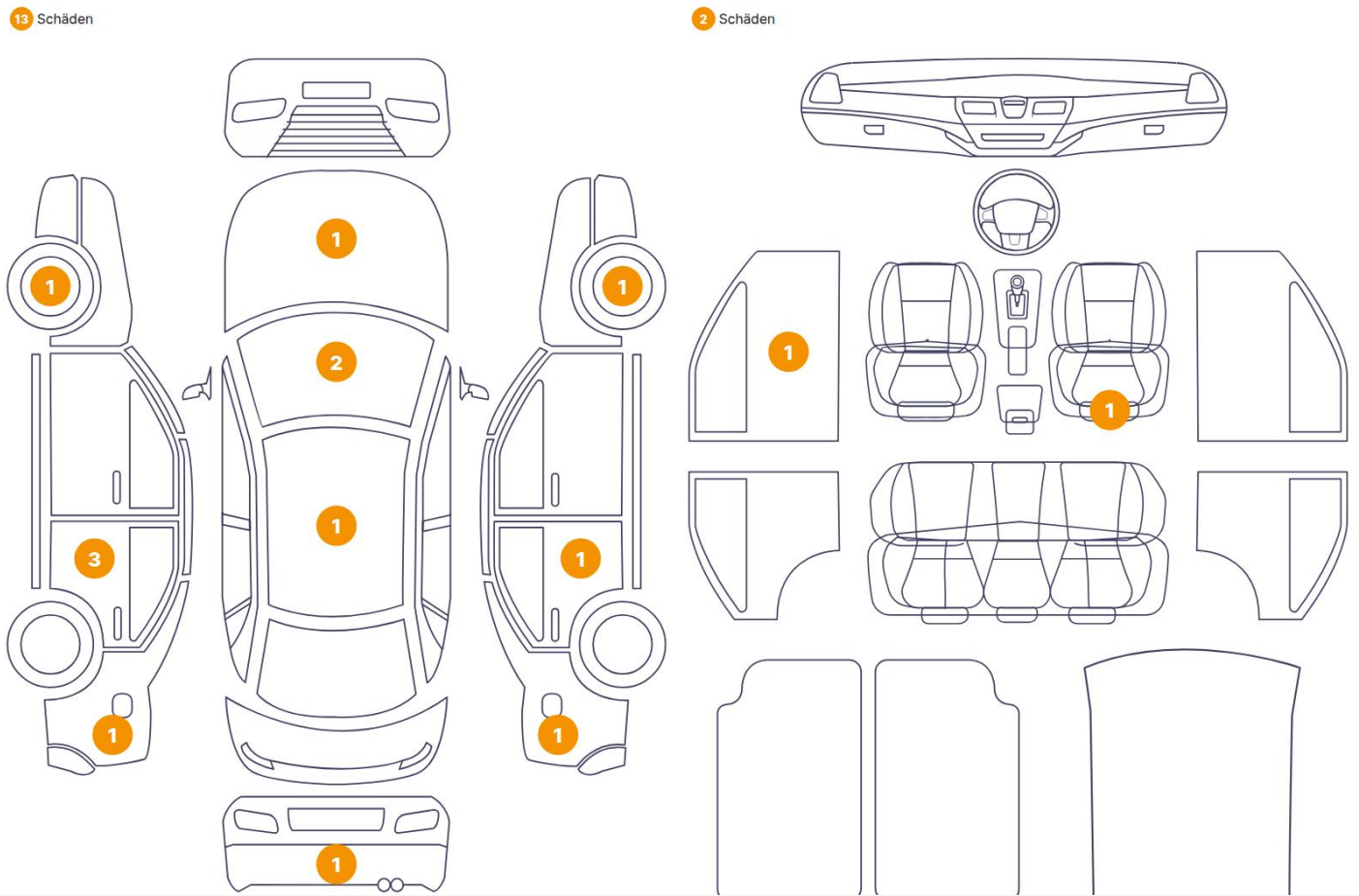
Equipment Details

Air Conditioning	Dual Zone Climate Control	Alloy Wheel Size	17
Extra Wheel / Tyre Set	Winter Tyres - Alloy	Seat Heating	Front
Sunroof Type	Opening Panoramic		

Wheels & Tyres

Left Front Tyre Depth	3	Right Front Tyre Depth	4
Right Rear Tyre Depth	4	Left Rear Tyre Depth	4
Extra Wheel - 1 Tyre Depth	6	Extra Wheel - 2 Tyre Depth	4
Extra Wheel - 3 Tyre Depth	5	Extra Wheel - 4 Tyre Depth	4

Cosmetic Damage



Component		Damage	Comments
1	Seat / Front Right	Interior / Dirty	
2	Panel Filling / Front Left	Interior / Missing	
3	Hood	Paint / Poor Previous Repair	
4	Rim / Front Left	Out of Bodywork / Scratch	
5	Rim / Front Right	Out of Bodywork / Scratch	
6	Door / Back Right	Bodywork / Dent / Dent	
7	Side Panel / Back Right	Bodywork / Dent / Dent	
8	Bumper / Back	Paint / Scratch / Scuff	
9	Side Panel / Back Left	Bodywork / Dent / Dent	
10	Door / Back Left	Bodywork / Dent / Dent	
11	Door / Back Left	Bodywork / Dent / Dent	
12	Door / Back Left	Paint / Scratch / Scuff	
13	Panoramic Roof	Glass Break / Scratch / Scratch	

14	Windshield / Front	Glass Break / Impact
15	Windshield / Front	Glass Break / Impact



1. Seat / Front Right
Interior / Dirty -



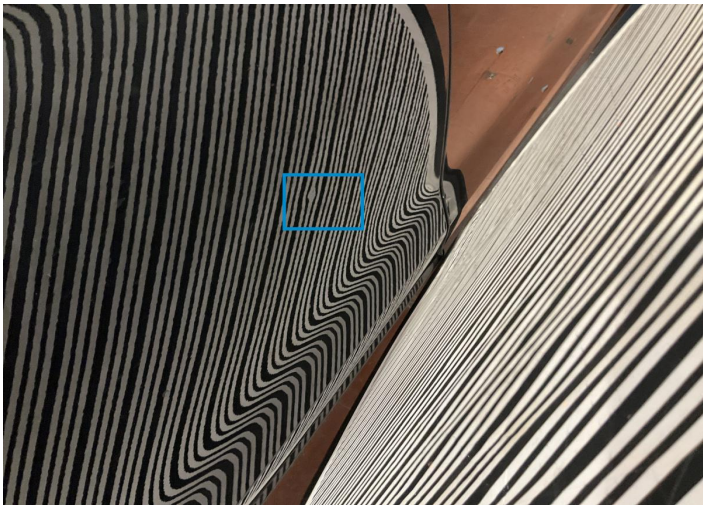
2. Panel Filling / Front Left
Interior / Missing -



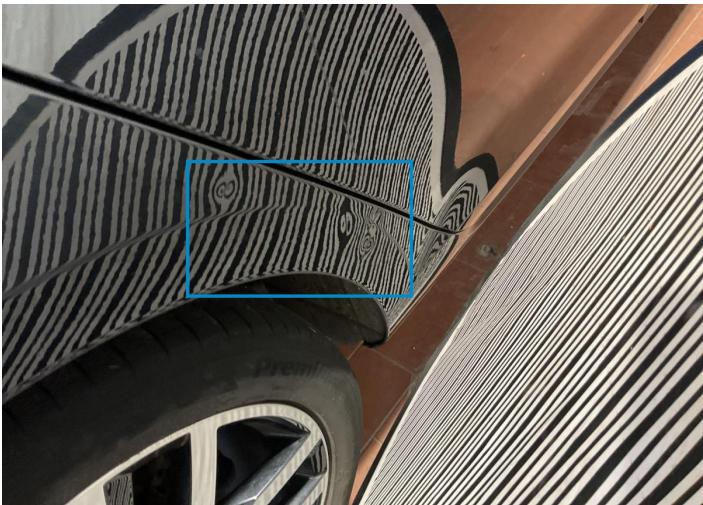
4. Rim / Front Left
Out of Bodywork / Scratch -



5. Rim / Front Right
Out of Bodywork / Scratch -



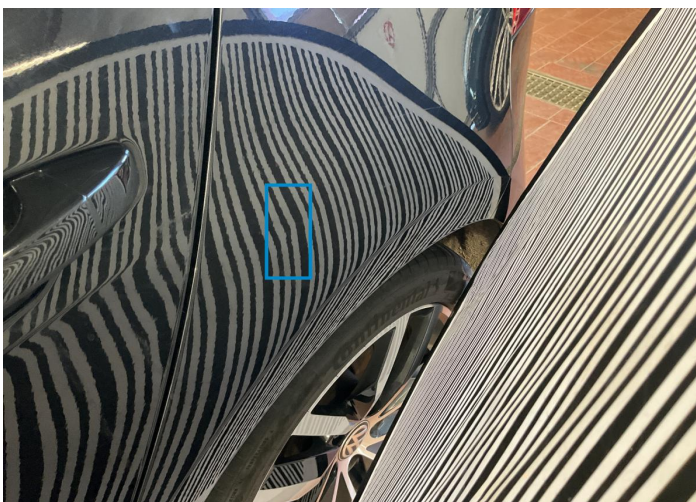
6. Door / Back Right
Bodywork / Dent / Dent -



7. Side Panel / Back Right
Bodywork / Dent / Dent -



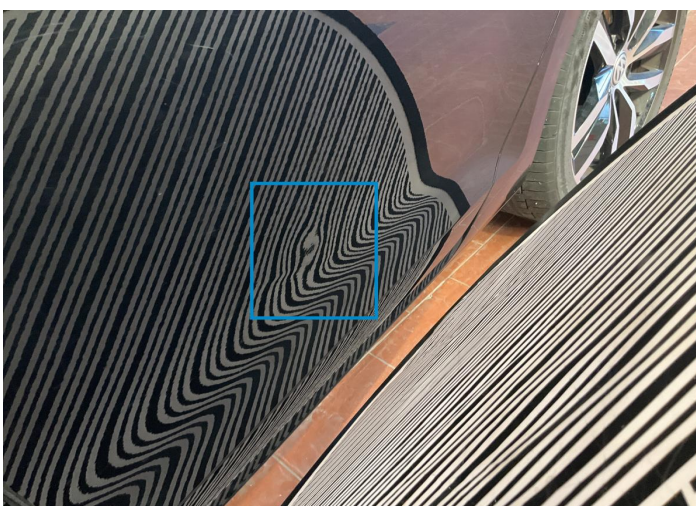
8. Bumper / Back
Paint / Scratch / Scuff -



9. Side Panel / Back Left
Bodywork / Dent / Dent -



10. Door / Back Left
Bodywork / Dent / Dent -



11. Door / Back Left
Bodywork / Dent / Dent -



12. Door / Back Left
Paint / Scratch / Scuff -



13. Panoramic Roof
Glass Break / Scratch / Scratch -



14. Windshield / Front
Glass Break / Impact -



15. Windshield / Front
Glass Break / Impact -

Mechanical Condition

Equipments Test

Main & Spare Keys Functioning	✓	Electric Windows	✓
Navigation System	✓	Audio Equipment	✓
Parking Sensors / Cameras Functioning	✓	AC / Heating System	✓

Control Lights

ABS Warning Light	✓	ESP Fault/Traction Control Malfunction Light	✓
Airbag Warning Light	✓	Oil Pressure Warning Light	✓
Brake Warning Light	✓	Power Steering Warning Light	✓
Alternator / Battery	✓	No Dashboard Lights	✓
Tire Pressure Monitoring System	✓	Display Defect	✓

Engine

Engine Status / EML	✓	Engine Leak Visible	✓
Engine Starts	✓		

Gearbox

Gear Box	✓
----------	---

Levels

Brakes Fluid	✓	Coolant Fluid	✓
--------------	---	---------------	---

Test Drive Inspection

Steering Wheel			
Steering Noise / Anomaly		✓	
Engine			
Engine Noise	✓	The Gears Scratch / Skip / Abnormal Operation	NA
Fume Quantity	✓	Power Loss	✓
Clutch			
Clutch Functioning		✓	
Brake			
Brake System Anomaly		✓	
General			
Test Driven Status		NA	
✓ No troubles detected, good condition or correct tests, according to vehicle age and mileage			
! Damages or malfunction detected that requires repairs by the buyer			
NA Not applicable			
☐ Not tested			

Disclaimer

Please also note the "UserGuide condition report", which shows the scope of the vehicle description.

[User Guide](#)