



VOLKSWAGEN Up up!

VIN NO WVWZZZAAZFD046338
Registration Number AZFD046338



| | | | |
|--------------|----------------------|-------------------------|--------------------------|
| MOT Date | Number of Owners | Number of Keys | Odometer Reading |
| 2027-07-01 | 2 | 2 | 106550 km |
| Last Service | Last Service Mileage | First Registration Date | Country First Registered |
| 2023-07-17 | 87119 | 2014-12-22 | Germany |

Inspection Report Summary

| | | | |
|-------------------------|---|----------------|-----------------|
| Customer | BCA Online | Report Number | P20250924082112 |
| Inspection Date / Place | 2025-09-24 / ARS Altmann AG Wolnzach | Cosmetic Grade | 4 |

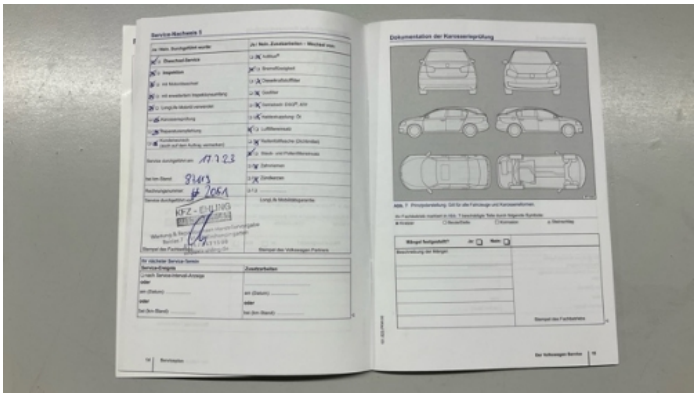
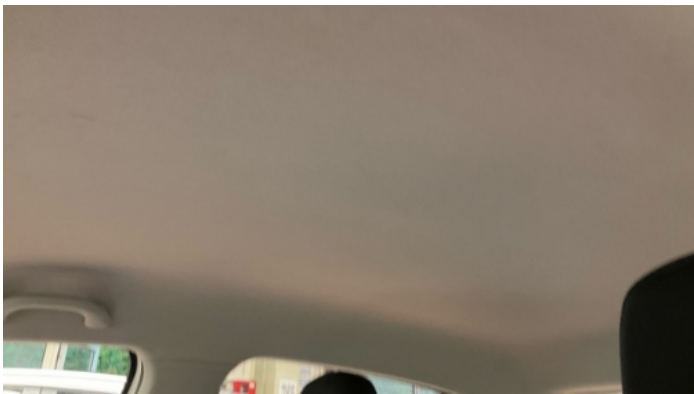
Vehicle Summary

| | | | |
|--------------------|--------|------------------------|------------|
| Vehicle Condition | Runner | VAT Type | Qualifying |
| Fuel Type | Petrol | Road Worthy | Yes |
| Colour | White | Engine Size (cc) | 999 |
| Engine Size | 1.0 | No of Doors | 5 |
| Body Type | Sedan | Drive Train | Front |
| Seat Colour | | No of Seats | 4 |
| Seat Covering Name | | Seat Covering | Cloth |
| Charging Cables | | NEDC CO2 Rating (q/km) | 105 |
| Gearbox Type | Manual | | |

Vehicle History & Documents

| | | | |
|------------------------|---------|----------------------|----|
| Service Book Available | Present | Next Service Mileage | km |
| Previous Usage | | Imported | No |
| Manufacturer Warrenty | | | |







Equipment

| | | | |
|-------------------|------------------------|------------------------|-------|
| Airbag Status | Remote central locking | Central locking | Radio |
| Anti-lock braking | CD Player | Leather steering wheel | |

Equipment Details

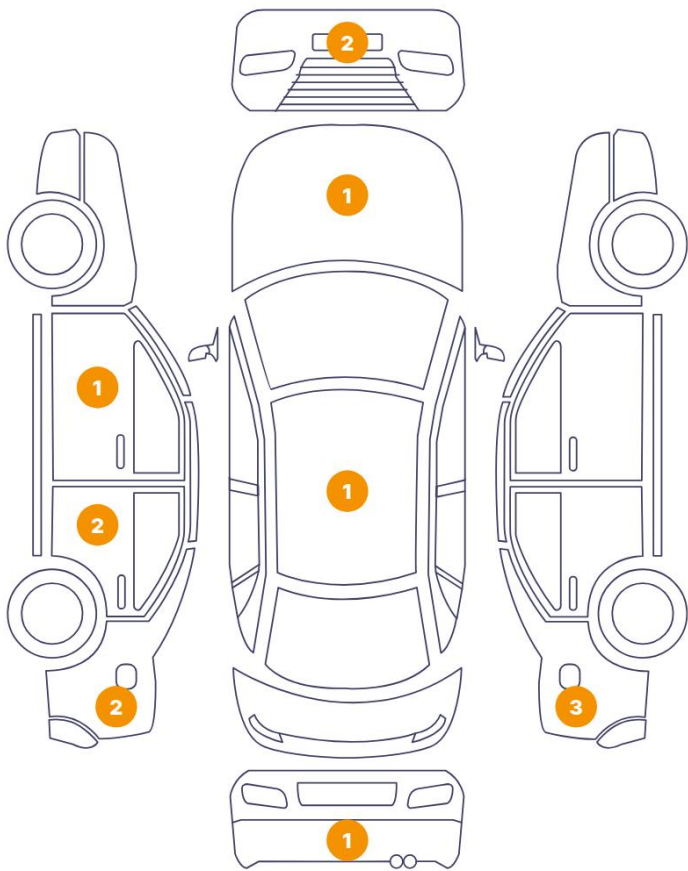
| | | | |
|------------------|-------|------------------------|----------------------|
| Air Conditioning | Yes | Extra Wheel / Tyre Set | Summer Tyres - Steel |
| Seat Heating | Front | | |

Wheels & Tyres

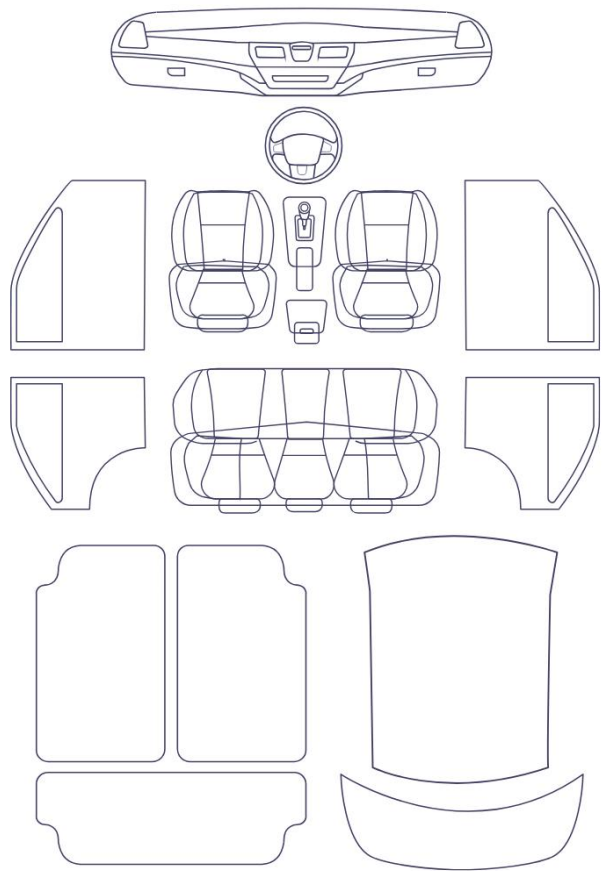
| | | | |
|----------------------------|---|----------------------------|---|
| Extra Wheel - 1 Tyre Depth | 3 | Extra Wheel - 2 Tyre Depth | 3 |
| Extra Wheel - 3 Tyre Depth | 3 | Extra Wheel - 4 Tyre Depth | 3 |
| Right Front Tyre Depth | 5 | Left Front Tyre Depth | 5 |
| Right Rear Tyre Depth | 5 | Left Rear Tyre Depth | 5 |

Cosmetic Damage

13 Schäden



0 Schäden



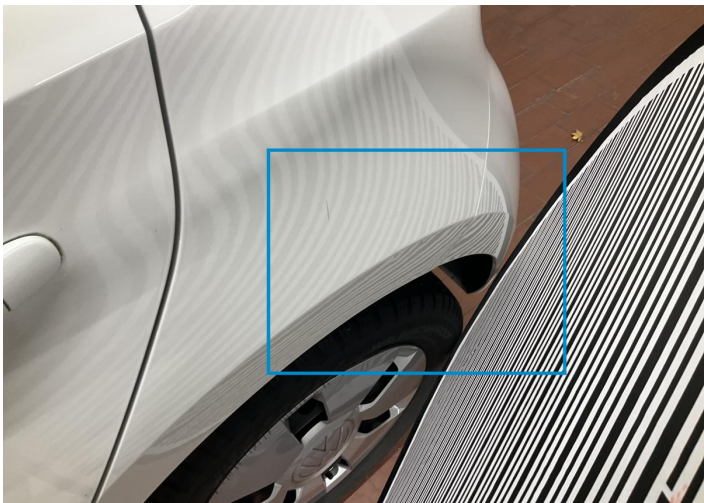
| Component | | Damage | Comments |
|-----------|-------------------------|----------------------------|----------|
| 1 | Hood | Bodywork / Dent / Dent | |
| 2 | Side Panel / Back Left | Bodywork / Dent / Dent | |
| 3 | Side Panel / Back Right | Bodywork / Dent / Dent | |
| 4 | Bumper / Front | Paint / Scratch / Scuff | |
| 5 | Door / Front Left | Paint / Scratch / Scuff | |
| 6 | Pillar / Back Left | Bodywork / Dent / Dent | |
| 7 | Pillar / Back Left | Paint / Scratch / Scuff | |
| 8 | Side Panel / Back Left | Paint / Scratch / Scuff | |
| 9 | Bumper / Back | Paint / Scratch / Scuff | |
| 10 | Side Panel / Back Right | Paint / Corrosion | |
| 11 | Side Panel / Back Right | Bodywork / Dent / Dent | |
| 12 | Antenna Rod | Out of Bodywork / Breakage | |

13 Bumper / Front

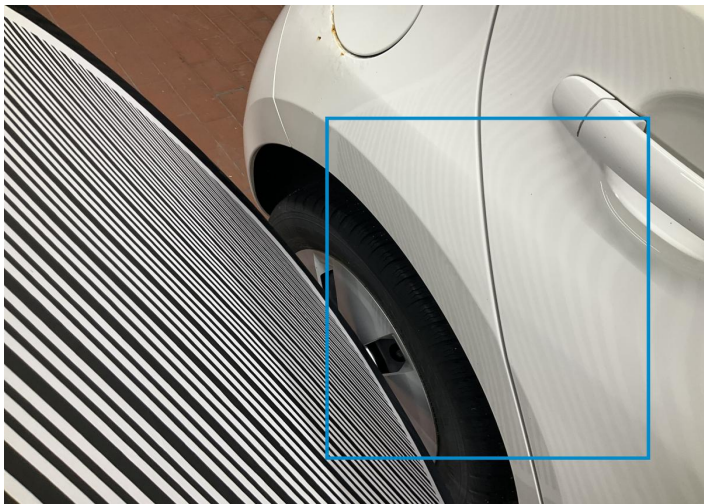
Paint / Scratch / Scuff



1. Hood
Bodywork / Dent / Dent -



2. Side Panel / Back Left
Bodywork / Dent / Dent -



3. Side Panel / Back Right
Bodywork / Dent / Dent -



4. Bumper / Front
Paint / Scratch / Scuff -



5. Door / Front Left
Paint / Scratch / Scuff -



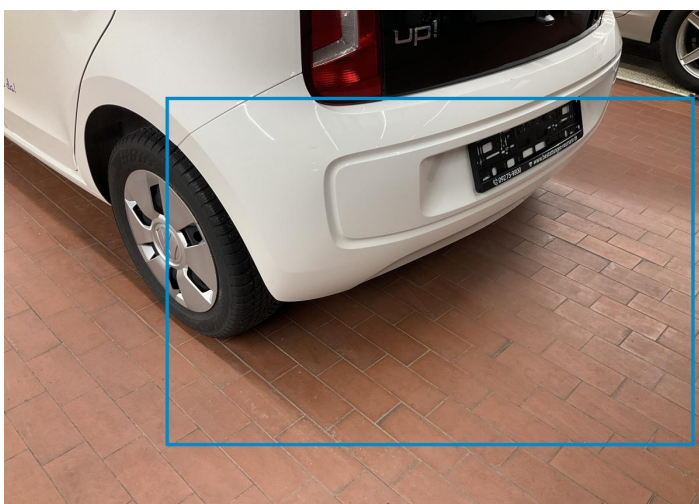
6. Pillar / Back Left
Bodywork / Dent / Dent -



7. Pillar / Back Left
Paint / Scratch / Scuff -



8. Side Panel / Back Left
Paint / Scratch / Scuff -



9. Bumper / Back
Paint / Scratch / Scuff -



10. Side Panel / Back Right
Paint / Corrosion -



11. Side Panel / Back Right
Bodywork / Dent / Dent -



12. Antenna Rod
Out of Bodywork / Breakage -



13. Bumper / Front
Paint / Scratch / Scuff -

Mechanical Condition

Control Lights

| | | | |
|------------------------------|---|---------------------------------|---|
| ABS Warning Light | ✓ | Airbag Warning Light | ✓ |
| Oil Pressure Warning Light | ✓ | Brake Warning Light | ✓ |
| Power Steering Warning Light | ✓ | Alternator / Battery | ✓ |
| No Dashboard Lights | ✓ | Display Defect | ✓ |
| Service Light | ! | Tire Pressure Monitoring System | ✓ |

Engine

| | | | |
|---------------------|---|---------------------|---|
| Engine Status / EML | ✓ | Engine Leak Visible | ✓ |
| Engine Starts | ✓ | | |

Gearbox

| | |
|----------|---|
| Gear Box | ✓ |
|----------|---|

Levels

| | | | |
|--------------|---|---------------|---|
| Brakes Fluid | ✓ | Coolant Fluid | ✓ |
|--------------|---|---------------|---|

Equipments Test

| | | | |
|---------------------|---|-------------------------------|---|
| Central Locking | ✓ | Main & Spare Keys Functioning | ✓ |
| Electric Windows | ✓ | Audio Equipment | ✓ |
| AC / Heating System | ✓ | | |

Test Drive Inspection

| Engine | | | |
|---|---|---|---|
| Engine Noise | ✓ | Fume Quantity | ✓ |
| Power Loss | ✓ | The Gears Scratch / Skip / Abnormal Operation | ! |
| Brake | | | |
| Brake System Anomaly | ✓ | | |
| Steering Wheel | | | |
| Steering Noise / Anomaly | ✓ | | |
| Clutch | | | |
| Clutch Functioning | ! | | |
| General | | | |
| Test Driven Status | ✓ | | |
| ✓ No troubles detected, good condition or correct tests, according to vehicle age and mileage | | | |
| ! Damages or malfunction detected that requires repairs by the buyer | | | |
| NA Not applicable | | | |
| ☐ Not tested | | | |

Disclaimer

Please also note the "UserGuide condition report", which shows the scope of the vehicle description.

[User Guide](#)