



# VOLKSWAGEN Polo IV

## Polo 1.4

VIN NO WVWZZZ9NZ9B022257

Registration Number NZ9B022257



MOT Date

2025-12-01

Last Service



Number of Owners

2

Last Service Mileage



Number of Keys

2

First Registration Date

2008-12-12

Odometer Reading

311279 km

Country First Registered

Germany

### Inspection Report Summary

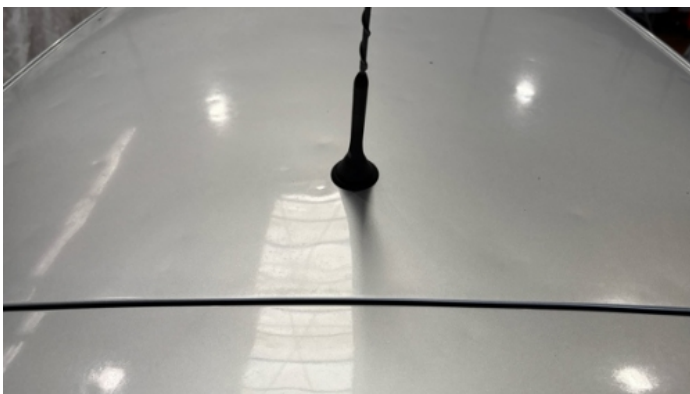
Customer	BCA Online	Report Number	P20250929130854
Inspection Date / Place	2025-09-29 / BCA Oberndorf	Cosmetic Grade	4

### Vehicle Summary

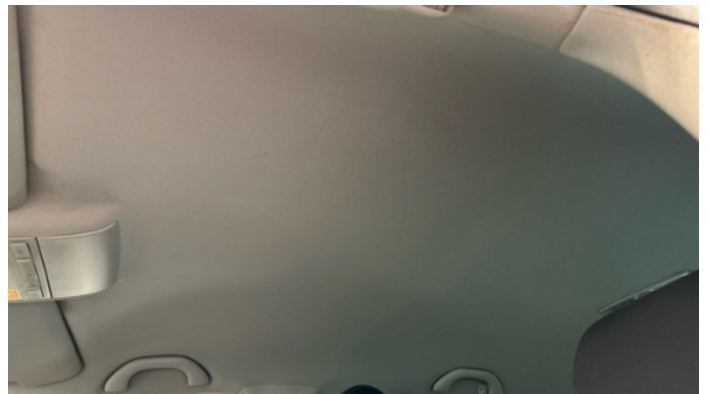
Vehicle Condition	Runner	VAT Type	Margin
Fuel Type	Petrol	Road Worthy	Yes
Colour	Silver	Engine Size (cc)	1390
Engine Size	1.4	No of Doors	5
Body Type	Sedan	Drive Train	Front
Seat Colour		No of Seats	5
Seat Covering Name	Schwarz/ grau	Seat Covering	Cloth
Charging Cables		NEDC CO2 Rating (q/km)	152
Gearbox Type	Manual		

### Vehicle History & Documents

Service Book Available	Missing	Next Service Mileage	km
Previous Usage		Imported	No
Manufacturer Warrenty			









Equipment

Tinted Glass	Alloys wheels	Cruise control	Heated wing mirrors
Remote central locking	Stability control	Central locking	Radio
Airbag Status	Anti-lock braking	Front fog lamps	Remote adjusting wing mirrors
Split folding rear seats	CD Player	Leather steering wheel	Rear parking sensors

Equipment Details

Air Conditioning	Yes	Alloy Wheel Size	14
Seat Heating	Front		

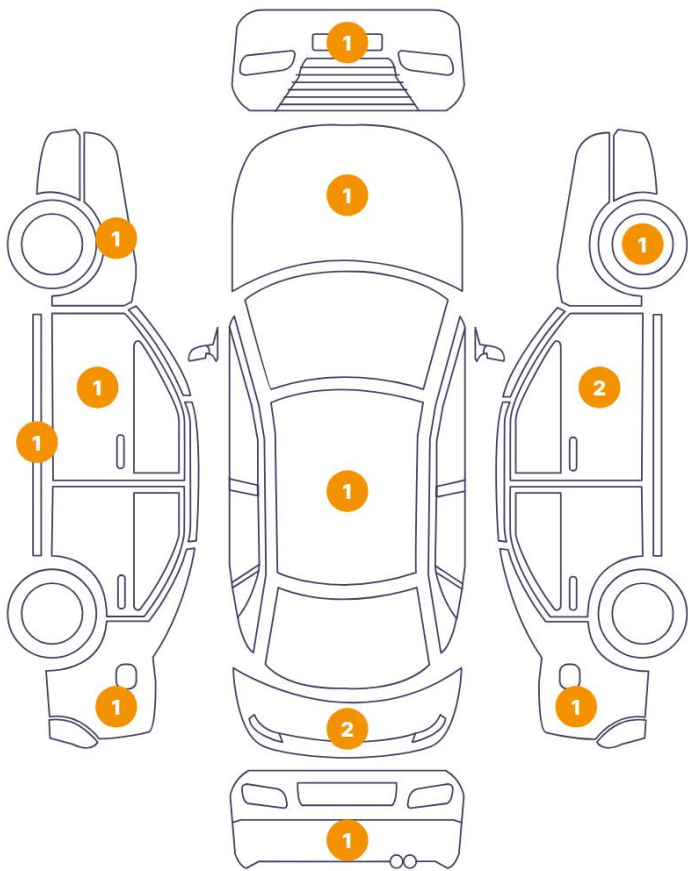
Wheels & Tyres

Right Front Tyre Depth	5	Left Front Tyre Depth	5
Right Rear Tyre Depth	5	Left Rear Tyre Depth	5

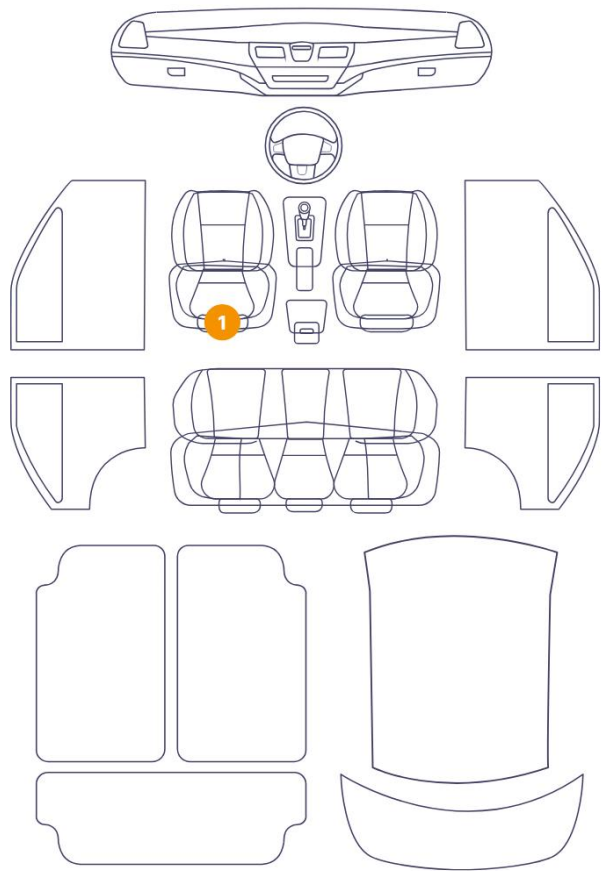


Cosmetic Damage

14 Schäden



1 Schäden



Component		Damage	Comments
1	Bumper / Front	Paint / Scratch / Scuff	
2	Hood	Bodywork / Dent / Dent	
3	Fender / Front Left	Bodywork / Dent / Dent	
4	Mirror / Front Left	Bodywork / Breakage / Crack	
5	Rocker Panel / Center Left	Paint / Scratch / Line	
6	Seat / Front Left	Interior / Ripped	
7	Roof	Bodywork / Dent / Hail Area	
8	Fender / Back Left	Bodywork / Dent / Hail Area	
9	Tailgate	Bodywork / Dent / Dent	
10	Tailgate	Paint / Scratch / Line	
11	Bumper / Back	Paint / Scratch / Scuff	
12	Fender / Back Right	Bodywork / Dent / Dent	

13	Mirror / Front Right	Bodywork / Breakage / Crack
14	Door Side Molding / Front Right	Paint / Scratch / Scuff
15	Rim / Front Right	Out of Bodywork / Scratch



1. Bumper / Front  
Paint / Scratch / Scuff -



2. Hood  
Bodywork / Dent / Dent -



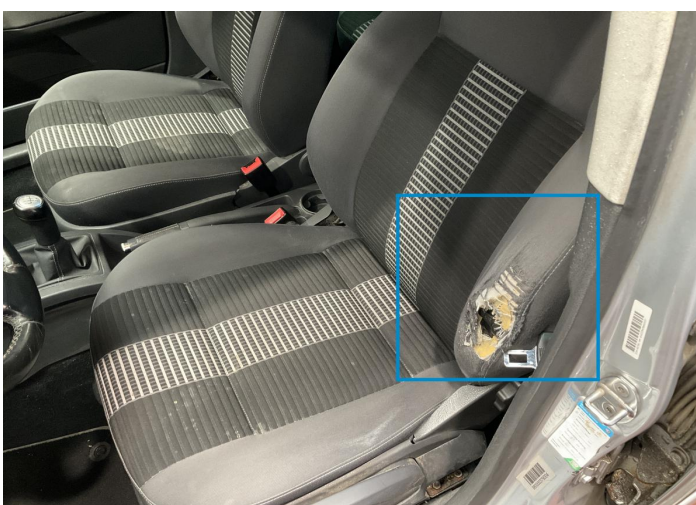
3. Fender / Front Left  
Bodywork / Dent / Dent -



4. Mirror / Front Left  
Bodywork / Breakage / Crack -

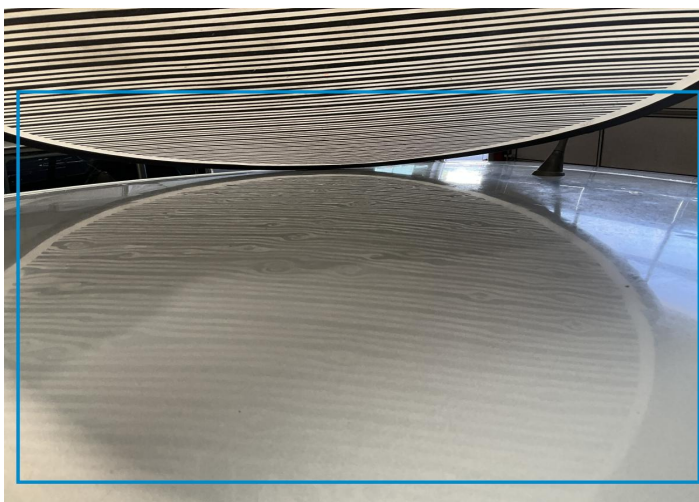


5. Rocker Panel / Center Left  
Paint / Scratch / Line -



6. Seat / Front Left  
Interior / Ripped -

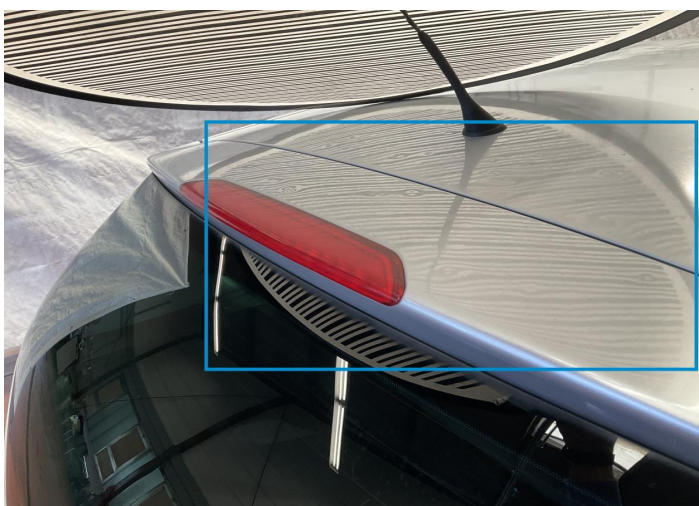




7. Roof  
Bodywork / Dent / Hail Area -



8. Fender / Back Left  
Bodywork / Dent / Hail Area -



9. Tailgate  
Bodywork / Dent / Dent -



10. Tailgate  
Paint / Scratch / Line -



11. Bumper / Back  
Paint / Scratch / Scuff -



12. Fender / Back Right  
Bodywork / Dent / Dent -



13. Mirror / Front Right  
Bodywork / Breakage / Crack -



14. Door Side Molding / Front Right  
Paint / Scratch / Scuff -



15. Rim / Front Right  
Out of Bodywork / Scratch -

## Mechanical Condition

### Control Lights

Display Defect	✓	Service Light	✓
ABS Warning Light	✓	ESP Fault/Traction Control Malfunction Light	✓
Airbag Warning Light	✓	Oil Pressure Warning Light	✓
Brake Warning Light	✓	Power Steering Warning Light	✓
Alternator / Battery	✓	No Dashboard Lights	✓

### Equipments Test

Central Locking	✓	Main & Spare Keys Functioning	✓
Electric Windows	✓	Audio Equipment	✓
Parking Sensors / Cameras Functioning	✓	AC / Heating System	✓
Other Equipments	✓		

### Engine

Engine Status / EML	✓	Engine Leak Visible	!
Engine Starts	✓		

### Gearbox

Gear Box	✓
----------	---

### Levels

Brakes Fluid	✓	Coolant Fluid	✓
--------------	---	---------------	---



Test Drive Inspection


Steering Wheel

Steering | Noise / Anomaly 

Engine

Engine Noise		The Gears Scratch / Skip / Abnormal Operation	
Fume Quantity		Power Loss	

Clutch





Clutch Functioning 

Brake

Brake System Anomaly 

General

Test Driven Status      Not Performed

-  **No troubles detected, good condition or correct tests, according to vehicle age and mileage**
-  **Damages or malfunction detected that requires repairs by the buyer**
-  **Not applicable**
-  **Not tested**

Disclaimer

Please also note the "UserGuide condition report", which shows the scope of the vehicle description. [User Guide](#)