



Expertise

Protocol number: 41153245
Order No. / Reference: 25074537
Inspection date: 20 Aug 2025

Manufacturer: Volkswagen	Model: Sharan 1.4 TSI Comfortline
VIN: WVVZZZ7NZNV000150	



Vehicle details	
Manufacturer / Type / Model / Equipment	
Volkswagen Sharan 1.4 TSI Comfortline	
Vehicle Identification number	WVVZZZ7NZNV000150
Mileage (Read)	41,195 km
First registration	24 Aug 2021
Number of holders	1
Next periodical technical inspection	08/2026
(Report on hand)	
Power / Engine displacement	110 kw / 1,395 ccm
Fuel type / Cylinder	Petrol / 4
Gearbox / Number of gears	Manual / 6
Type of drive	Front drive
Type of vehicle	Van
Colour / colour code	uranograu (I7F)
Doors / Seats	5 / 5
Upholstery type	Cloth
Colour of upholstery	Black-Anthracite
Vehicle with smoke odor	no



Vehicle details

Maintenance booklet / proof	digital proof / complete	Next maintenance in	29,800 km
Last maintenance on / at	07/2025 at 40,931 km		
Key is / should be	2 / 2	FZG documents	ZB#2 (B) was available (copy), ZB#1 (S) was not available
		Letter No.	GC417408
Previous damage / Accident	None detectable	Repainting	None detectable
Inspection conditions	sufficient	Lifting equipment / pit	yes
Test drive	short drive on the company premises	Engine function test	Performed
Manufacturer key number/ type code number	0603 / ATO 00142		
Emission standard	EURO6;WLTP;AP;PI/CI; M, N1 I	Fine dust sticker	
Permitted total weight	2,330 kg	Empty weight	

Tyres

Mounted tyres

#	Tyre size	Type of tyre	Manufacturer	Tread depth
1)	215/60 R16 95V	Summer tyres on Light alloy	Continental	5mm / 5mm
2)	215/60 R16 95V	Summer tyres on Light alloy	Continental	6mm / 6mm

Additional tyres

#	Tyre size	Type of tyre	Manufacturer	Tread depth
1)	225/50 R17 98H	Winter tyres on Light alloy	Continental	7mm / 7mm
2)	225/50 R17 98H	Winter tyres on Light alloy	Continental	7mm / 7mm

Replacement

Typ	Tyre size	Type of tyre	Manufacturer	Tread depth
	Tirefit	Expiration date 03/2025		

Legend: Tread depth information for tires on the left is in the first place, for tires on the right is in the second place on the axle in the direction of travel

Equipment

Standard equipment

- 1 USB interface at the front, and 2 USB charging sockets on the rear center console
- Airbag for driver and front passenger (with passenger airbag deactivation - knee airbag on the driver's side)
- Airbag, head airbag system for front and rear passengers (including front side airbags)
- Blind Spot Sensor with Rear Traffic Alert including Lane Assist (alerts the driver to vehicles that could pose a hazard when turning or changing lanes using visual signals in the respective exterior mirrors; warns with corrective steering intervention if the vehicle unintentionally leaves the lane)
- tachometer
- Parking aid (warning signals for obstacles in the front and rear areas)
- Automatic headlight switching with daytime running lights ("leaving home" function and manual "coming home" function)
- Electric windows, front and rear
- Transmission: 6-speed manual transmission
- Rear window wiper with interval control
- Interior mirror automatically dimming
- ISOFIX anchor points (device for attaching 3 child seats to the individual seats in the 2nd row)
- Headrests (3) rear
- Front headrests (safety-optimized, length and height adjustable)
- Lumbar supports in front (electrically adjustable on driver's side)
- Steering column with height and length adjustment
- Multifunction display "Plus" (with extended display options, e.g.: - Digital speedometer - Digital oil temperature display - Language settings - Winter tires - Lights and visibility - Auxiliary heating and ventilation)
- Non-smoking version (storage compartment and 12 V socket at the front)
- Emergency braking assistant "Front Assist"
- Upholstery: Cloth
- Rain sensor
- Wheels: Tire pressure monitoring indicator
- Sliding doors rear left and right
- Power steering (electrohydraulic, speed-dependent)
- Seats: 3 individual seats in the 2nd row (length adjustment, backrest angle adjustment and "EasyFold" folding function)
- Seats: Sport comfort seats
- Start-stop system (with brake energy recovery)
- Dust and pollen filter (with activated carbon filter)
- First aid kit, warning triangle and safety vest
- Volkswagen Media Control
- We Connect Go
- Electronic immobilizer
- Sharan storage compartment (storage compartment with lid on the instrument panel, 2 storage compartments with lid in the roof console, removable waste bin, drawers under the front seats)
- Exterior mirrors electrically adjustable and heated
- Outside temperature display
- Brake light, third
- Chrome applications on mirror adjustment, light rotary, hazard warning and window lifter switches
- Chrome strips on the side windows
- Roof rails black
- Decorative inlays: "Titanium Silver" (for instrument panel and front door trim)
- Electronic parking brake including auto-hold function
- Electronic Stability Program (ESP) with counter-steering support (incl. ABS with brake assist, ASR (traction control), EDS (electronic differential lock), MSR (engine drag torque control) and trailer stabilization)
- Luggage compartment cover (extendable and removable)
- Rear window heated
- Interior lights with switch-off delay and dimming function, 2 reading lights front and rear (ambient lighting)
- License plate lighting in LED technology
- Climatronic air conditioning system (with active combi filter and 3-zone temperature control)
- Black radiator grille with chrome strips on the slats
- Paint finish: Uni
- Steering wheel: Multifunction leather steering wheel (3 spokes) (leather gearshift knob)
- Front center armrest with storage box (height and length adjustable)
- Fatigue detection
- "Discover Media" navigation system with TFT touchscreen (radio integrated into the navigation system - MP3 playback - CD drive - SD card slot - AUX-IN multimedia jack - USB port - telephone interface - 8 speakers)
- Gasoline particulate filter
- Radio accessories: Digital radio reception DAB+
- Wheels: Light alloy wheels (4) "Memphis" 6.5 J x 16 (AirStop tires 215/60 R 16 - wheel locks with extended theft protection)
- Seat belts: 5 three-point automatic belts (front with height adjustment and belt tensioner - warning tone and light for unfastened front belts)
- Seats: Passenger seat backrest completely foldable
- Seats: Front seats height adjustable (backrest adjustment electric for driver's seat)
- Textile floor mats (for all rows of seats)
- Traffic sign recognition



- Central locking without safe security, with radio remote control and 2 radio folding keys

- Warning sound and light for unfastened seat belts at the front and rear
- Green thermal insulation glazing, side and rear

Extra equipment

- Paintwork: Special paintwork Uni
- Package: Winter (automatically heated windscreen washer nozzles - heated front seats)
- Wheels: Winter wheels "Sydney" light alloy wheels (4) 7 J x 17 (winter tires 225/50 R 17 H)
- Mesh partition
- Panoramic tilt/slide roof (with rear panoramic roof, including 1 storage compartment with lid in the roof console)
- Rear view camera (camera image in the display of the radio system or radio navigation system shows the area behind the vehicle)

Brief expert findings

Documents submitted	At the time of the inspection, the registration certificate Part 2 (letter) was available, but the registration certificate Part 1 (certificate) was not. (Copy)
VIN comparison	The vehicle identification number (VIN) was read from the vehicle and its conformity with the submitted documents was verified during the inspection by the undersigned.
Inspection	The inspection conditions were sufficient for the assessment of the vehicle. Lifting equipment and a pit were available for examining the vehicle.
Test drive	A short maneuvering and shunting trip was carried out on the company premises.
Engine function test	An engine test run was performed.

Value reducing factors

No.	Component group	Description
1	Equipment	Tirefit filler - Due - Replace
2	Rear bumper	Rear bumper - Glued / labelled - Remove
3	Door - front right side	Door edge - Scratch(es) - Smart repair
4	Sill - right side	Sill - Scratch(es) - Smart repair
5	Rear bumper	Rear bumper - Scratch(es) - Smart repair
6	Door - front left side	Door edge - Scratch(es) - Smart repair
7	Sill - left side	Sill - Scratch(es) - Smart repair
8	Wheel / tyres	Alloy rim - front right side - Scratch(es) - Loss in value
9	Bonnet	Bonnet - Stone chips - Paint

Wear and tear

No.	Component group	Description
1	Wheel / tyres	Alloy rim - front left side - Scratch(es) - No deduction
2	Front bumper	Front bumper - Stone chips - No deduction
3	Vehicle glazing	Windscreen - Stone chips - No deduction

The vehicle shows signs of wear commensurate with its age and use.



Order/Scope of order

The order was placed to prepare a sales report for the vehicle described. This includes the following:

- Description of core relevant information about the vehicle
- Documentation of equipment features
(Delivery by third-party service providers)
- Documentation of damage, defects, missing parts
- Documentation of previous damage, unrepaired previous damage, repainting
- a brief visual or functional inspection of the equipment details if possible.
(Functional tests of driver assistance systems are not included in the scope of services!)
- a photo documentation of the vehicle

Basis for the order

This product is based on the Alphabet Fuhrpark GmbH guidelines for vehicle returns and valuations. The expert makes the explicit findings in each individual case objectively within the framework of the specified standards based on his or her own expertise.

The vehicle inspection takes place in a disassembled state.

Damage or defects that can only be detected during disassembly/diagnosis work or through advanced knowledge remain within the scope of the prognosis risk. An extended risk exists for concealed defects caused by fraudulent deception and not identifiable by the expert.

Damage or defects resulting from normal use or wear and tear of the vehicle will be accepted according to the applicable standard.

There was no explicit identification or monetary consideration of the expected features within the product.

Features which in their nature and severity slightly exceed normal use but do not constitute unacceptable damage will be documented and identified under signs of use if necessary.

Damage or defects which, according to the underlying standard, can no longer be attributed to normal use or wear and tear are listed in the product under "Depreciating Factors".

Depending on the product specification, a monetary ID can be provided. If this takes place, the costs can be 100% d or pro rata depending on the vehicle's age and mileage.

Previous damages

Apparently, no repaired previous damage could be found on the vehicle.



Figure 1: Diagonal front (left)



Figure 2: Diagonal front (right)



Figure 3: Diagonal rear (left)



Figure 4: Diagonal rear (right)



Figure 5: Interior - front



Figure 6: Interior - rear



Figure 7: Instrument cluster



Figure 8: Instrument panel



Figure 9: interior 360° view



Figure 10: Cargo area

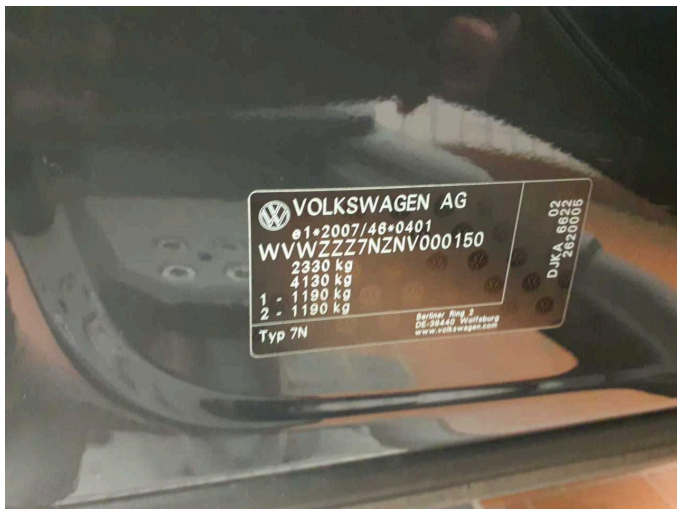


Figure 11: VIN



Figure 12: Mounted tyres



Figure 13: Documents

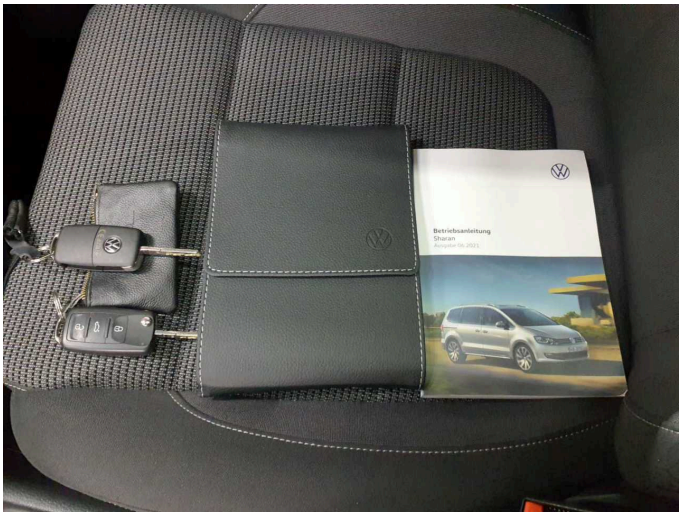


Figure 14: Documents



Figure 15: Documents

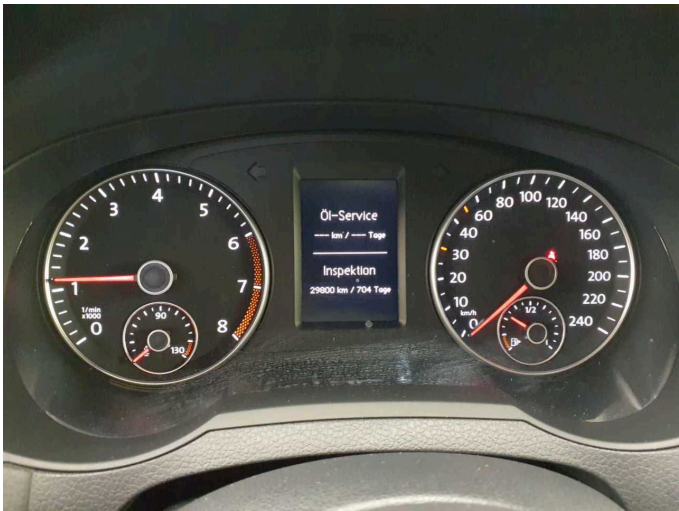


Figure 16: Documents



Figure 17: Additional tyres



Figure 18: Navigation



Figure 19: Misc.



Figure 20: Misc.

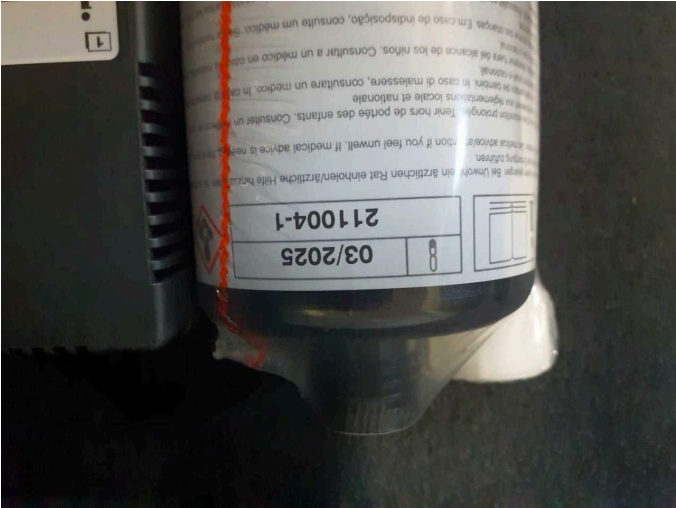


Figure 21: Misc.



Figure 22: Misc.



Figure 23: Misc.



Figure 24: Misc.



Figure 25: Misc.



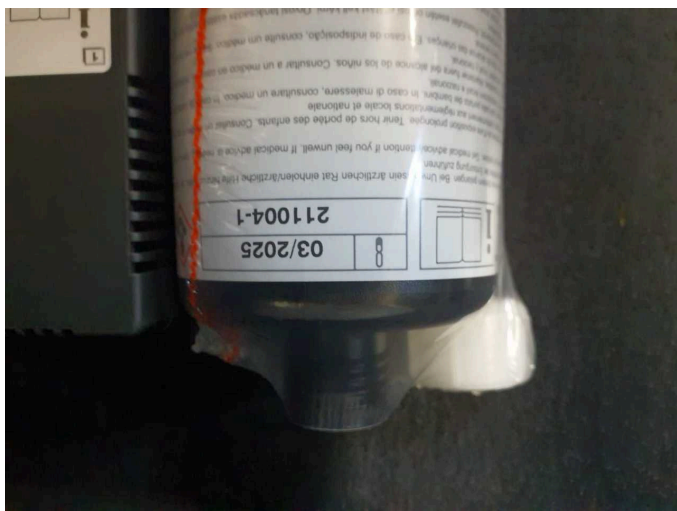
Figure 26: Misc.



Figure 27: Misc.



Figure 28: Misc.



Damage 1: Equipment: Tirefit filler - Due - Replace



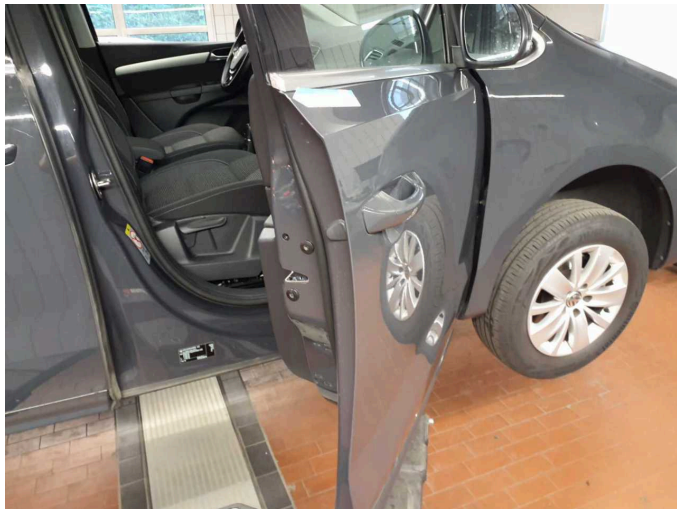
Damage 2: Rear bumper: Rear bumper - Glued / labelled - Remove



Damage 2: Rear bumper: Rear bumper - Glued / labelled - Remove



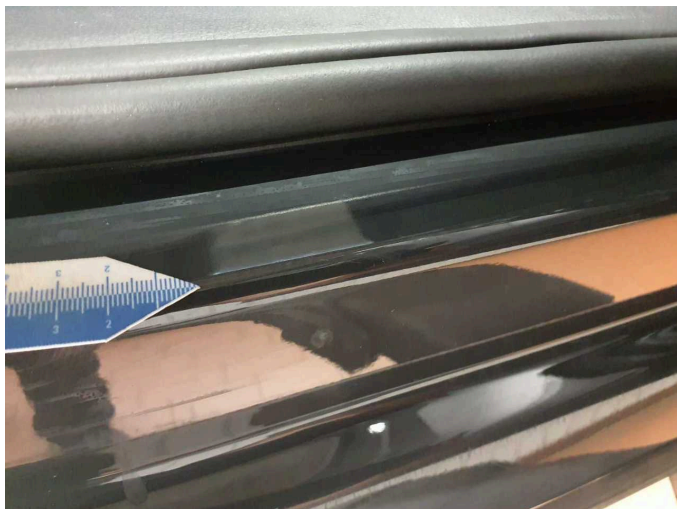
Damage 3: Door - front right side: Door edge - Scratch(es) - Smart repair



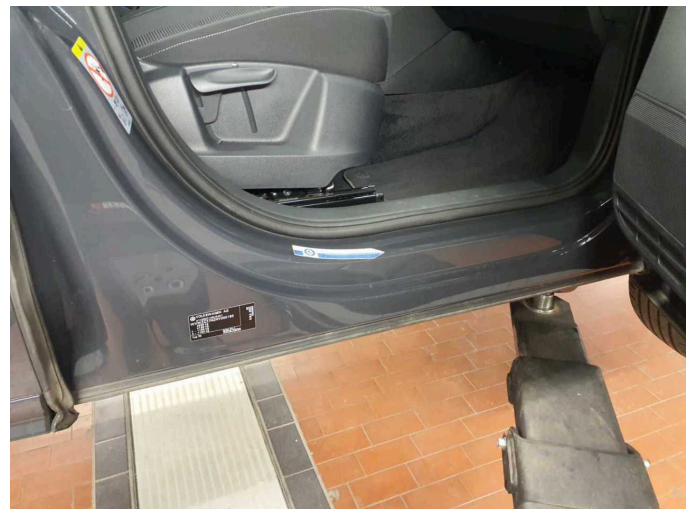
Damage 3: Door - front right side: Door edge - Scratch(es) - Smart repair



Damage 4: Sill - right side: Sill - Scratch(es) - Smart repair



Damage 4: Sill - right side: Sill - Scratch(es) - Smart repair



Damage 4: Sill - right side: Sill - Scratch(es) - Smart repair



Damage 5: Rear bumper: Rear bumper - Scratch(es) - Smart repair



Damage 5: Rear bumper: Rear bumper - Scratch(es) - Smart repair



Damage 5: Rear bumper: Rear bumper - Scratch(es) - Smart repair



Damage 5: Rear bumper: Rear bumper - Scratch(es) - Smart repair



Damage 5: Rear bumper: Rear bumper - Scratch(es) - Smart repair



Damage 6: Door - front left side: Door edge - Scratch(es) - Smart repair



Damage 6: Door - front left side: Door edge - Scratch(es) - Smart repair



Damage 7: Sill - left side: Sill - Scratch(es) - Smart repair



Damage 7: Sill - left side: Sill - Scratch(es) - Smart repair



Damage 8: Wheel / tyres: Alloy rim - front right side - Scratch(es) - Loss in value



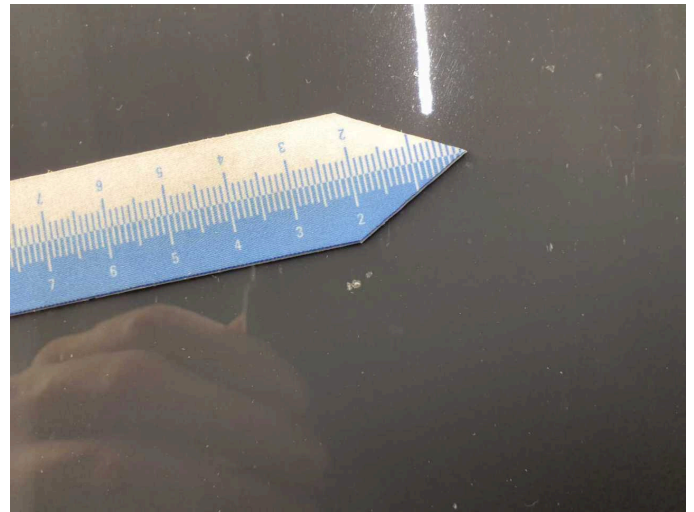
Damage 8: Wheel / tyres: Alloy rim - front right side - Scratch(es) - Loss in value



Damage 8: Wheel / tyres: Alloy rim - front right side - Scratch(es) - Loss in value



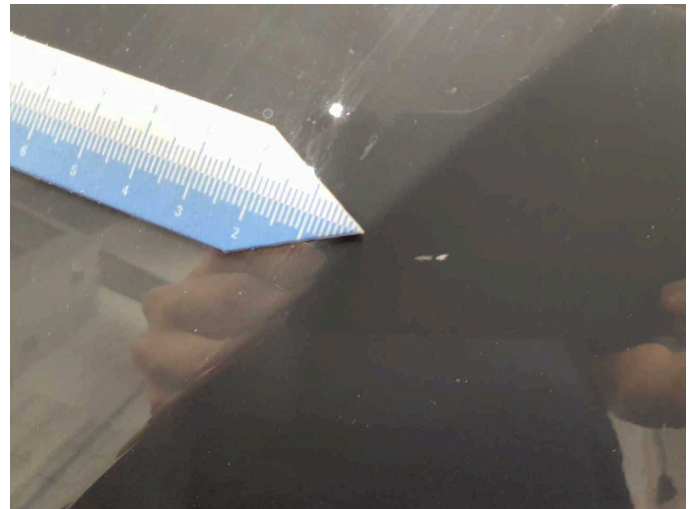
Damage 9: Bonnet: Bonnet - Stone chips - Paint



Damage 9: Bonnet: Bonnet - Stone chips - Paint



Damage 9: Bonnet: Bonnet - Stone chips - Paint



Damage 9: Bonnet: Bonnet - Stone chips - Paint



Damage 9: Bonnet: Bonnet - Stone chips - Paint



Wartungshistorie

(gemäß Auftraggeber Informationen)

Fahrgestellnummer: WVVZZZ7NZNV000150

Hersteller / Modell: VOLKSWAGEN VW Sharan 1.4 TSI Comfortline

Datum	KM-Stand	Beschreibung
25.07.2025	40.931	Bremsflüssigkeit; Bremsflüssigkeit ern; Motoröl b. Wartung; Ölfilter ern; Regelwartungsdienst; Wartung Sonstiges; Zündkerzen ern
22.08.2024	32.862	AU; Motoröl b. Wartung; Ölfilter ern; Ölwechsel; Wartung Sonstiges
18.08.2023	21.672	Bremsflüssigkeit; Bremsflüssigkeit ern; Motoröl b. Wartung; Ölfilter ern; Regelwartungsdienst; Wartung Sonstiges
26.08.2022	9.685	Bremse Sonstiges; Bremsklötze hinten; Bremsscheiben hinten; Motoröl b. Wartung; Ölfilter ern; Ölwechsel; Reparatur Sonstiges; Wartung Sonstiges