



VOLKSWAGEN Sharan

Sharan 2.0 TDI DSG

VIN NO WVWZZZ7NZLV003805
Registration Number NZLV003805



MOT Date	Number of Owners	Number of Keys	Odometer Reading
2026-10-01	1	2	82797 km
Last Service	Last Service Mileage	First Registration Date	Country First Registered
-	-	2019-11-22	Germany

Inspection Report Summary

Customer	BCA Online	Report Number	P20250909074910
Inspection Date / Place	2025-09-09 / BCA Neuss	Cosmetic Grade	4

Vehicle Summary

Vehicle Condition	Runner	VAT Type	Qualifying
Fuel Type	Diesel	Road Worthy	Yes
Colour	Blue	Engine Size (cc)	1968
Engine Size	2.0	No of Doors	5
Body Type	Stationwagon / Estate	Drive Train	Front
Seat Colour		No of Seats	5
Seat Covering Name	schwarz	Seat Covering	Synthetic Leather
Charging Cables		NEDC CO2 Rating (q/km)	144
Gearbox Type	Automatic		

Vehicle History & Documents

Service Book Available	-	Next Service Mileage	km
Previous Usage		Imported	No
Manufacturer Warrenty			







Equipment

Tinted Glass	Trafficsignrecognition	Adaptivecruisecontrol	Alloys wheels
Blindspotassist	Cruise control	Front parking sensors	Remote adjusting wing mirrors
Reversing Camera	Satellite navigation	Electrically folding wing mirrors	Laneassist
LED Headlamps	Rear parking sensors	Tow ball	USB Socket
Airbag Status	Anti-lock braking	Bluetooth telephone interface	Diesel particulate filter
Heated wing mirrors	Remote central locking	Roof rails	Stability control
Electrictailgate	Leather steering wheel	Radio	

Equipment Details

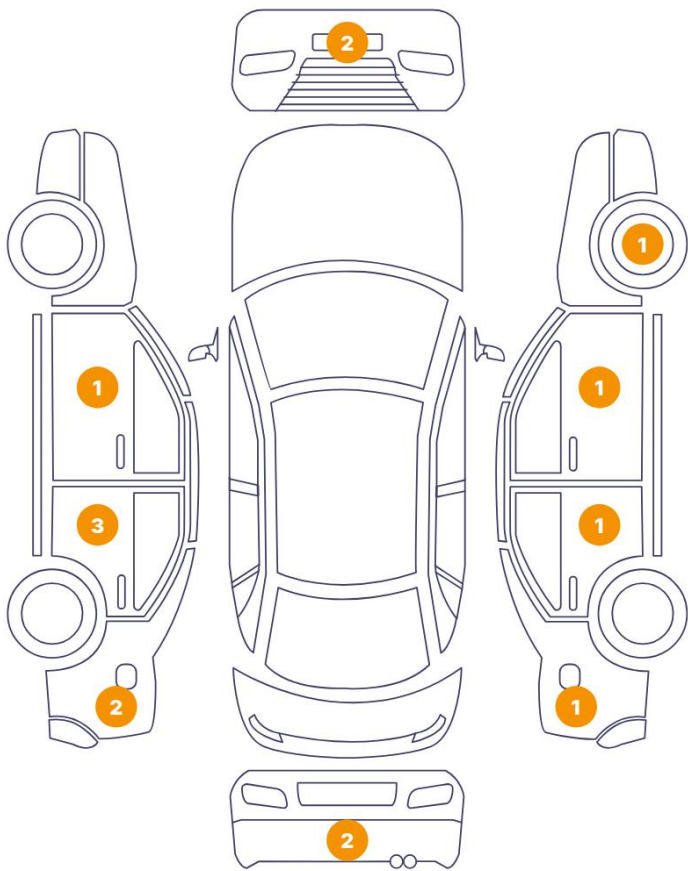
Tow Ball Type	Pivoted	Air Conditioning	Dual Zone Climate Control
Alloy Wheel Size	17	Extra Wheel / Tyre Set	Winter Tyres - Alloy
Seat Heating	Front		

Wheels & Tyres

Right Front Tyre Depth	5	Left Front Tyre Depth	5
Right Rear Tyre Depth	5	Left Rear Tyre Depth	5
Extra Wheel - 1 Tyre Depth	5	Extra Wheel - 2 Tyre Depth	5
Extra Wheel - 3 Tyre Depth	5	Extra Wheel - 4 Tyre Depth	5

Cosmetic Damage

14 Schäden



0 Schäden



Component		Damage	Comments
1	Rim / Front Right	Out of Bodywork / Scratch	
2	Bumper / Front	Paint / Scratch / Scuff	
3	Bumper / Front	Bodywork / Dent / Dent	
4	Pillar / Front Right	Paint / Scratch / Scuff	
5	Pillar / Back Right	Bodywork / Dent / Dent	
6	Fender / Back Right	Paint / Scratch / Scuff	
7	Bumper / Back	Paint / Scratch / Scuff	
8	Bumper / Back	Paint / Scratch / Scuff	
9	Fender / Back Left	Paint / Scratch / Scuff	
10	Fender / Back Left	Paint / Scratch / Scuff	
11	Door Slide / Left	Paint / Scratch / Scuff	
12	Door Slide / Left	Paint / Scratch / Scuff	

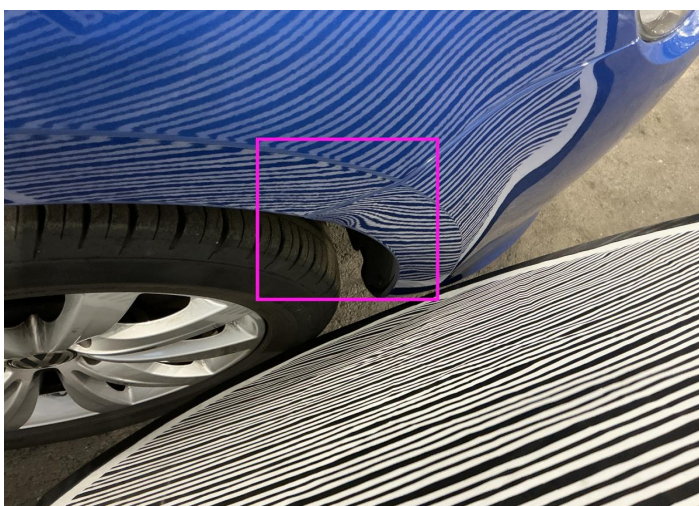
13	Door Slide / Left	Paint / Scratch / Scuff
14	Door / Front Left	Paint / Scratch / Scuff



1. Rim / Front Right
Out of Bodywork / Scratch -



2. Bumper / Front
Paint / Scratch / Scuff -



3. Bumper / Front
Bodywork / Dent / Dent -



4. Pillar / Front Right
Paint / Scratch / Scuff -



5. Pillar / Back Right
Bodywork / Dent / Dent -



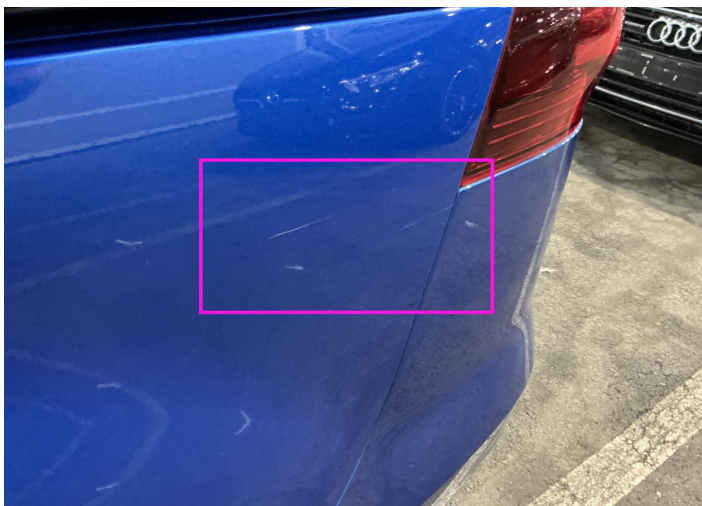
6. Fender / Back Right
Paint / Scratch / Scuff -



7. Bumper / Back
Paint / Scratch / Scuff -



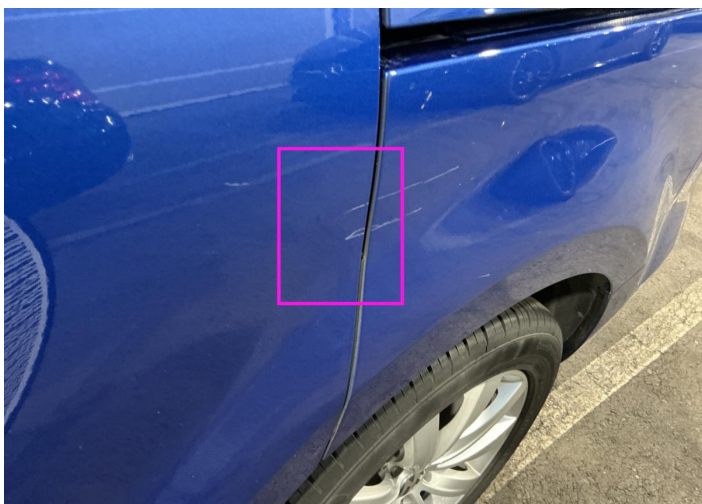
8. Bumper / Back
Paint / Scratch / Scuff -



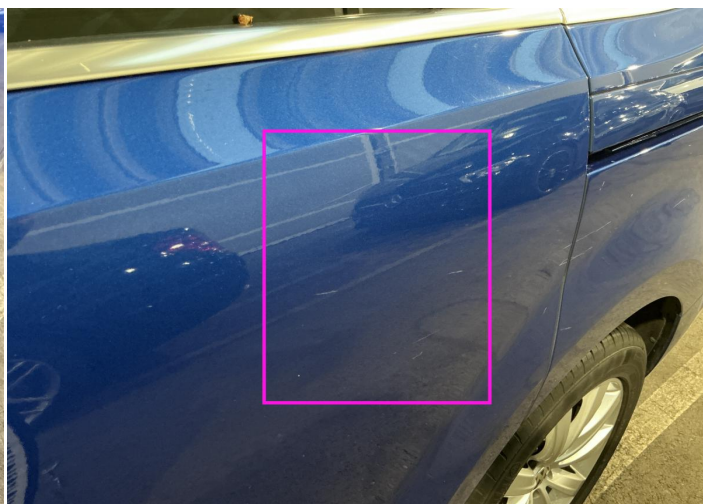
9. Fender / Back Left
Paint / Scratch / Scuff -



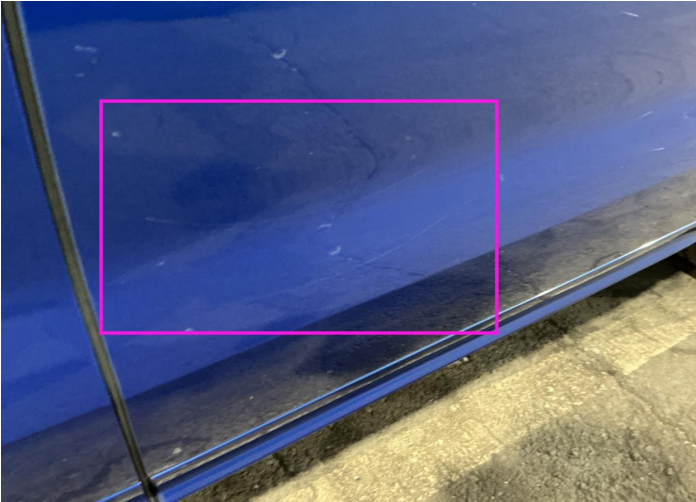
10. Fender / Back Left
Paint / Scratch / Scuff -



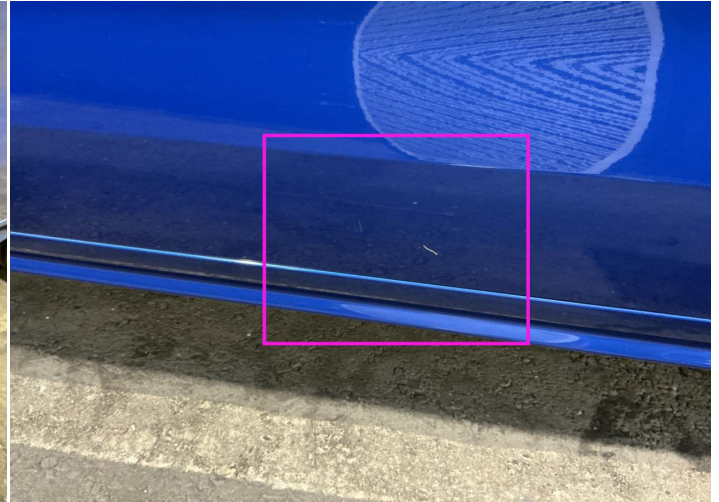
11. Door Slide / Left
Paint / Scratch / Scuff -



12. Door Slide / Left
Paint / Scratch / Scuff -



13. Door Slide / Left
Paint / Scratch / Scuff -



14. Door / Front Left
Paint / Scratch / Scuff -

Mechanical Condition

Control Lights

Display Defect	✓	Service Light	✓
ABS Warning Light	✓	ESP Fault/Traction Control Malfunction Light	✓
Diesel Particulate Filter Light	✓	Airbag Warning Light	✓
Oil Pressure Warning Light	✓	Brake Warning Light	✓
Power Steering Warning Light	✓	Alternator / Battery	✓
No Dashboard Lights	!	Tire Pressure Monitoring System	✓

Equipments Test

Main & Spare Keys Functioning	✓	Electric Windows	✓
Navigation System	✓	Parking Sensors / Cameras Functioning	✓
AC / Heating System	✓		

Engine

Engine Status / EML	!	Engine Leak Visible	✓
Engine Starts	✓		

Gearbox

Gear Box	✓
----------	---

Levels

Brakes Fluid	NA	Coolant Fluid	!
--------------	----	---------------	---

Test Drive Inspection

Steering Wheel			
Steering Noise / Anomaly		✓	
Engine			
Engine Noise	✓	The Gears Scratch / Skip / Abnormal Operation	✓
Fume Quantity	✓	Power Loss	✓
Brake			
Brake System Anomaly		✓	
General			
Test Driven Status		✓	
✓ <i>No troubles detected, good condition or correct tests, according to vehicle age and mileage</i>			
! <i>Damages or malfunction detected that requires repairs by the buyer</i>			
NA <i>Not applicable</i>			
= <i>Not tested</i>			

Disclaimer

Please also note the "UserGuide condition report", which shows the scope of the vehicle description.

[User Guide](#)