



VOLKSWAGEN Polo V

Polo 1.2 TSI

VIN NO WVWZZZ6RZCY189242
Registration Number RZCY189242



MOT Date	Number of Owners	Number of Keys	Odometer Reading
-	3	2	167472 km
Last Service	Last Service Mileage	First Registration Date	Country First Registered
-	-	2012-03-23	-

Inspection Report Summary

Customer	BCA Online	Report Number	P20250930105429
Inspection Date / Place	2025-09-30 / SULOJA Mönchengladbach	Cosmetic Grade	4

Vehicle Summary

Vehicle Condition	Runner	VAT Type	Margin
Fuel Type	Petrol	Road Worthy	Yes
Colour	White	Engine Size (cc)	1197
Engine Size	1.2	No of Doors	5
Body Type	Sedan	Drive Train	Front
Seat Colour		No of Seats	5
Seat Covering Name		Seat Covering	Cloth
Charging Cables		NEDC CO2 Rating (q/km)	119
Gearbox Type	Manual		

Vehicle History & Documents

Service Book Available	-	Next Service Mileage	km
Previous Usage		Imported	No
Manufacturer Warrenty			







Equipment

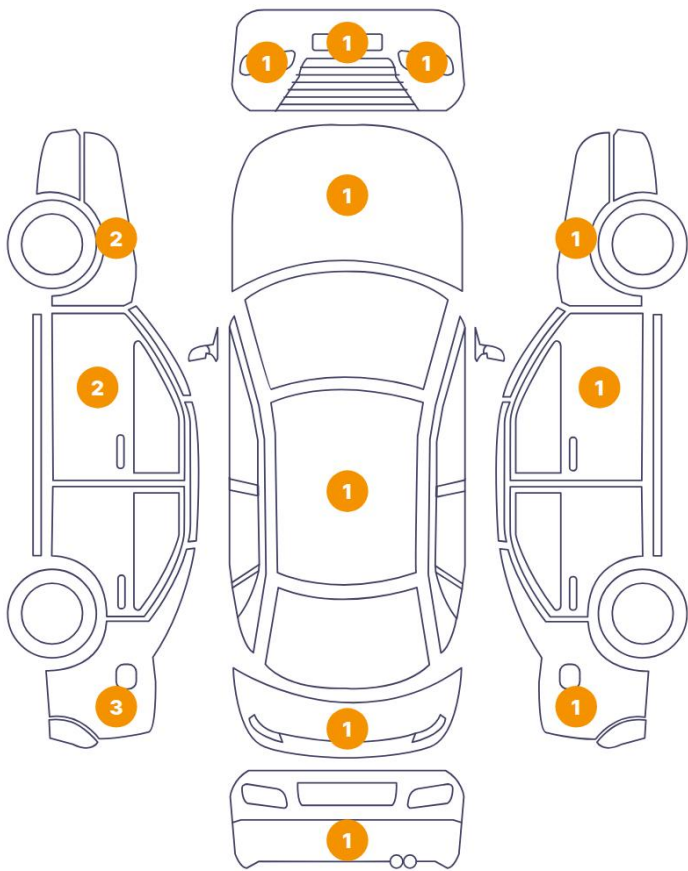
Trip Computer	Alloys wheels	Cruise control	Heated wing mirrors
Remote central locking	CD - multichanger	Central locking	Radio
Airbag Status	Anti-lock braking	Front fog lamps	Remote adjusting wing mirrors
Stability control	CD Player	Leather steering wheel	Rear parking sensors

Equipment Details

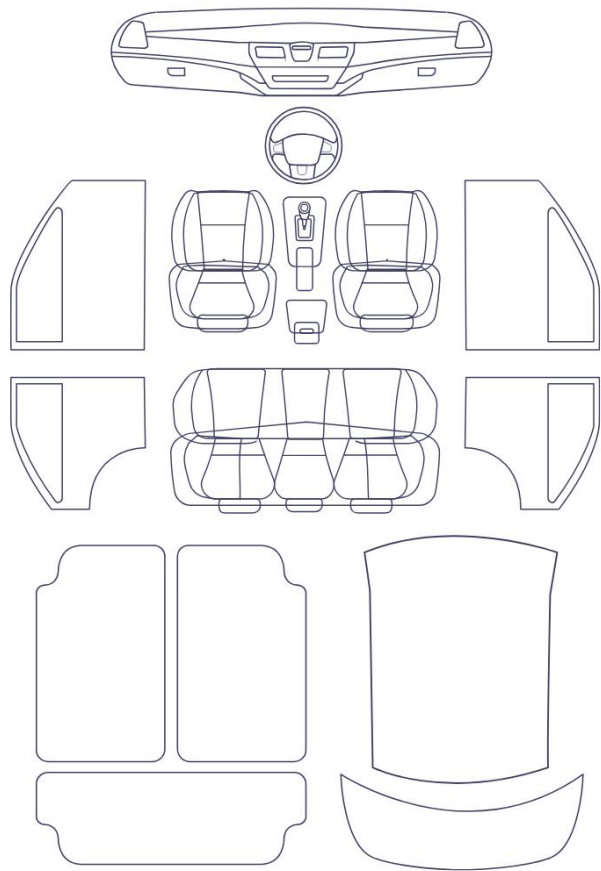
Air Conditioning	Yes	Alloy Wheel Size	14
Seat Heating	Front		

Cosmetic Damage

17 Schäden



0 Schäden



Component		Damage	Comments
1	Bumper / Front	Paint / Stone Chip	
2	Hood	Paint / Poor Previous Repair	
3	Front Light / Front Left	Glass Break	
4	Front Light / Front Right	Paint / Burn	
5	Fender / Front Left	Bodywork / Dent / Dent	
6	Fender / Front Left	Paint / Poor Previous Repair	
7	Door / Front Left	Paint / Scratch / Scuff	
8	Door / Front Left	Paint / Poor Previous Repair	
9	Side Panel / Back Left	Bodywork / Dent / Dent	
10	Side Panel / Back Left	Paint / Poor Previous Repair	
11	Side Panel / Back Left	Paint / Scratch / Scuff	
12	Tailgate	Bodywork / Dent / Dent	

13	Bumper / Back	Paint / Scratch / Scuff
14	Fender / Front Right	Paint / Poor Previous Repair
15	Door / Front Right	Bodywork / Dent / Dent
16	Side Panel / Back Right	Bodywork / Dent / Dent
17	Roof	Bodywork / Dent / Hail Area



1. Bumper / Front
Paint / Stone Chip -



2. Hood
Paint / Poor Previous Repair -



3. Front Light / Front Left
Glass Break -



4. Front Light / Front Right
Paint / Burn -



5. Fender / Front Left
Bodywork / Dent / Dent -



6. Fender / Front Left
Paint / Poor Previous Repair -



7. Door / Front Left
Paint / Scratch / Scuff -



8. Door / Front Left
Paint / Poor Previous Repair -



9. Side Panel / Back Left
Bodywork / Dent / Dent -



10. Side Panel / Back Left
Paint / Poor Previous Repair -



11. Side Panel / Back Left
Paint / Scratch / Scuff -



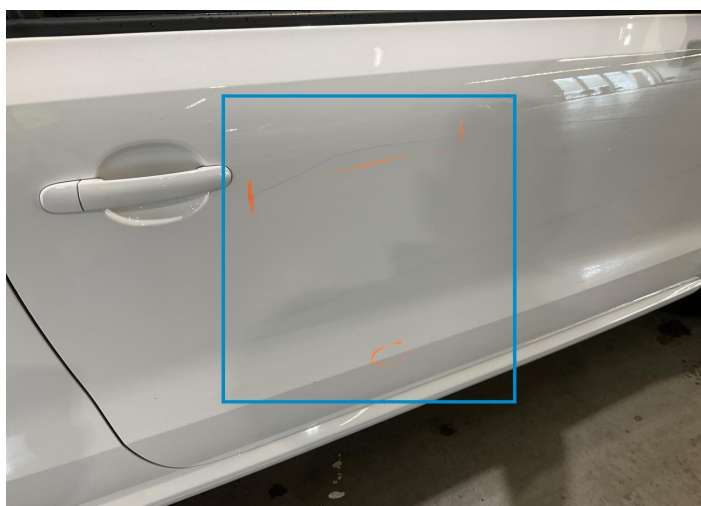
12. Tailgate
Bodywork / Dent / Dent -



13. Bumper / Back
Paint / Scratch / Scuff -



14. Fender / Front Right
Paint / Poor Previous Repair -



15. Door / Front Right
Bodywork / Dent / Dent -



16. Side Panel / Back Right
Bodywork / Dent / Dent -



17. Roof
Bodywork / Dent / Hail Area -

Mechanical Condition

Control Lights			
Display Defect	✓	Service Light	✓
Equipments Test			
Main & Spare Keys Functioning	✓	Parking Sensors / Cameras Functioning	✓
Other Equipments	✓		

Test Drive Inspection

Clutch	
Clutch Functioning	✓
General	
Test Driven Status	Not Performed
<div><div>✓</div><div>No troubles detected, good condition or correct tests, according to vehicle age and mileage</div></div> <div><div>!</div><div>Damages or malfunction detected that requires repairs by the buyer</div></div> <div><div>NA</div><div>Not applicable</div></div> <div><div>☐</div><div>Not tested</div></div>	

Disclaimer

Please also note the "UserGuide condition report", which shows the scope of the vehicle description.

[User Guide](#)