



VOLKSWAGEN Arteon

Arteon 2.0 TDI SCR DSG

VIN NO WVWZZZ3HZJE531252

Registration Number HZJE531252



MOT Date

2027-05-01

Last Service



Number of Owners

2

Last Service Mileage



Number of Keys

1

First Registration Date

2018-07-16

Odometer Reading

156017 km

Country First Registered

Germany

Inspection Report Summary

Customer	BCA Online	Report Number	P20250929141947
Inspection Date / Place	2025-09-29 / BCA Oberndorf	Cosmetic Grade	3

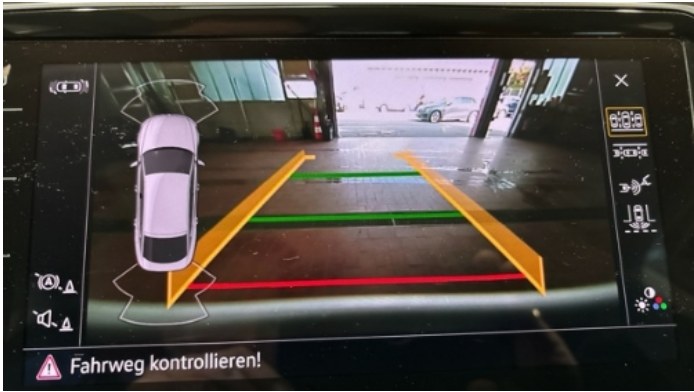
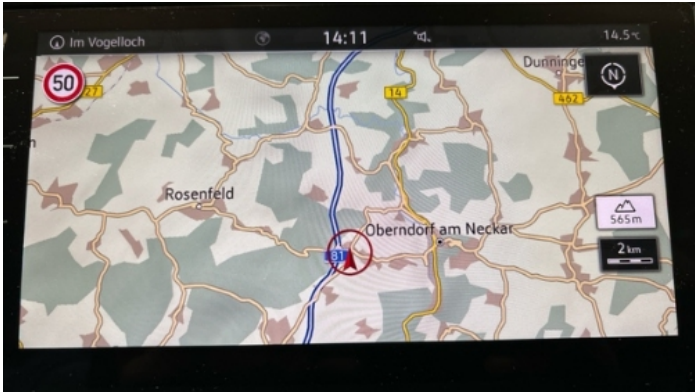
Vehicle Summary

Vehicle Condition	Runner	VAT Type	Margin
Fuel Type	Diesel	Road Worthy	Yes
Colour	White	Engine Size (cc)	1968
Engine Size	2.0	No of Doors	5
Body Type	Coupe	Drive Train	Front
Seat Colour		No of Seats	5
Seat Covering Name	Schwarz/ Braun	Seat Covering	Leather
Charging Cables		NEDC CO2 Rating (q/km)	114
Gearbox Type	Automatic		

Vehicle History & Documents

Service Book Available	Incomplete	Next Service Mileage	km
Previous Usage		Imported	No
Manufacturer Warrenty			







Equipment

Tinted Glass	Trafficsignrecognition	USB Socket	Alloys wheels
AndroidAuto	AppleCarPlay	Cruise control	Digital Radio
Fatiguewarningsystem	Heated wing mirrors	Remote central locking	Satellite navigation
Stability control	Central locking	Electrically folding wing mirrors	Laneassist
LED Headlamps	Rear parking sensors	Tow ball	Trip Computer
Airbag Status	Ambientlighting	Anti-lock braking	Bluetooth telephone interface
Diesel particulate filter	Digitaldashboard	Front parking sensors	Remote adjusting wing mirrors
Reversing Camera	Split folding rear seats	Sunroof	Distancewarningsystem
Emergencybrakeassist	Leather steering wheel	Radio	

Equipment Details

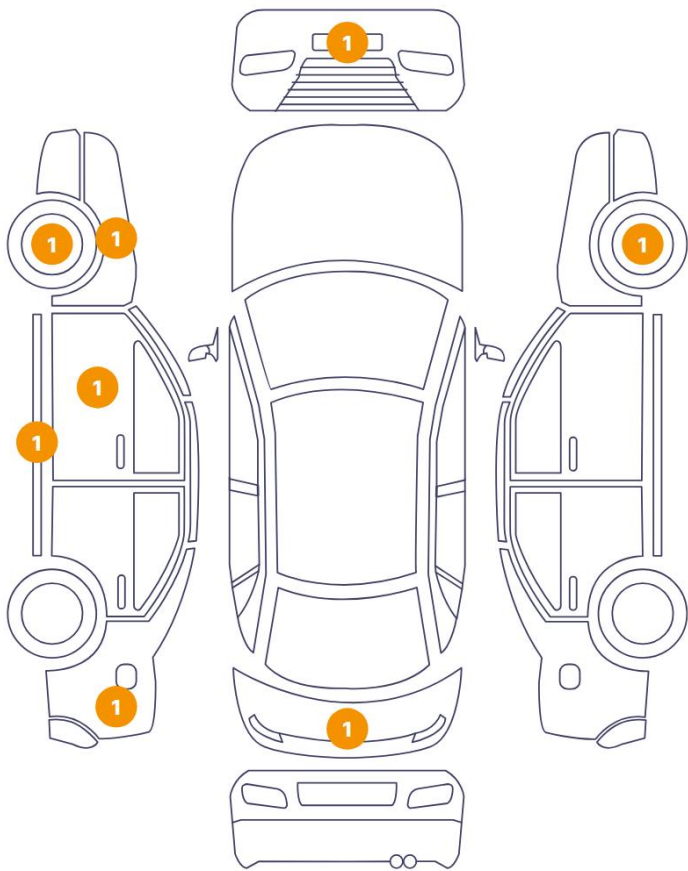
Tow Ball Type	Pivoted	Air Conditioning	Three Zone Climate Control
Alloy Wheel Size	18	Extra Wheel / Tyre Set	Winter Tyres - Alloy
Seat Heating	Front and Rear	Sunroof Type	Opening Panoramic

Wheels & Tyres

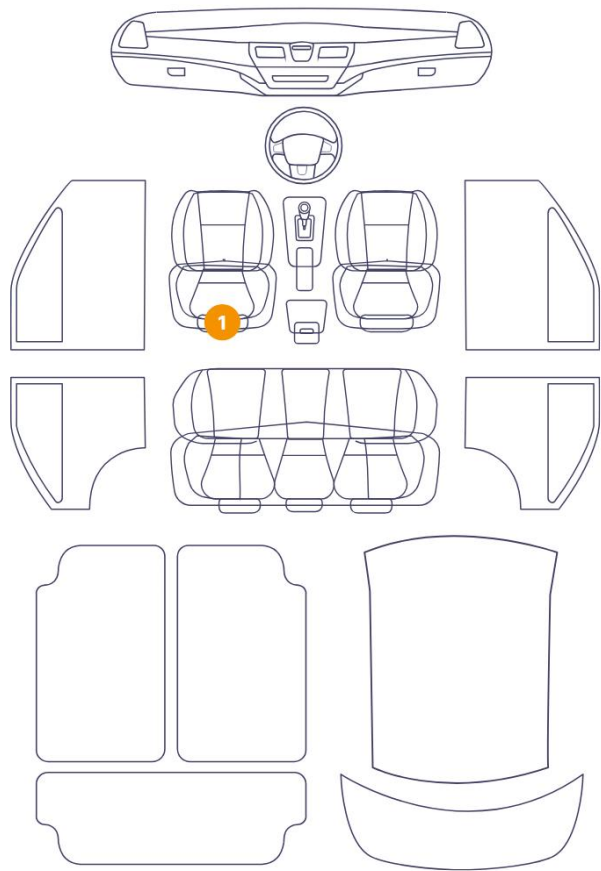
Extra Wheel - 1 Tyre Depth	4	Extra Wheel - 2 Tyre Depth	4
Extra Wheel - 3 Tyre Depth	4	Extra Wheel - 4 Tyre Depth	4
Right Front Tyre Depth	4	Left Front Tyre Depth	4
Right Rear Tyre Depth	5	Left Rear Tyre Depth	5

Cosmetic Damage

8 Schäden



2 Schäden



46

1

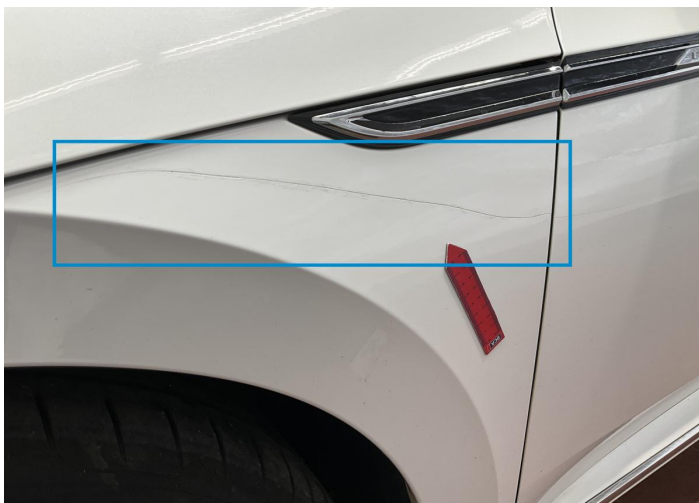
Component		Damage	Comments
1	Bumper / Front	Paint / Scratch / Scuff	
2	Rim / Front Left	Out of Bodywork / Scratch	
3	Fender / Front Left	Paint / Scratch / Scuff	
4	Door / Front Left	Paint / Scratch / Scuff	
5	Rocker Panel / Center Left	Paint / Scratch / Scuff	
6	Seat Cushion / Front Left	Interior / Scratched	
7	Fender / Back Left	Bodywork / Dent / Dent	
8	Tailgate	Paint / Stone Chip	
9	Rim / Front Right	Out of Bodywork / Scratch	
10	Other	Interior / Scratched	



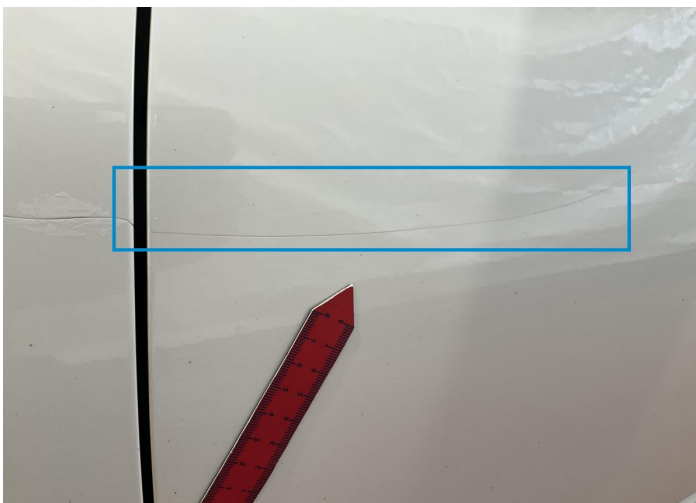
1. Bumper / Front
Paint / Scratch / Scuff -



2. Rim / Front Left
Out of Bodywork / Scratch -



3. Fender / Front Left
Paint / Scratch / Scuff -



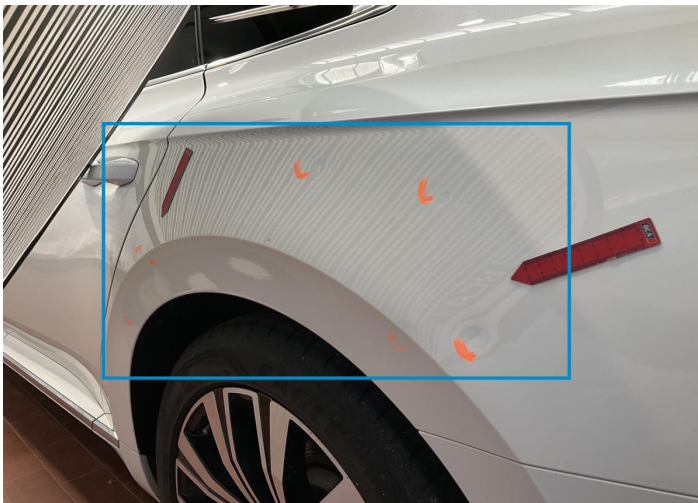
4. Door / Front Left
Paint / Scratch / Scuff -



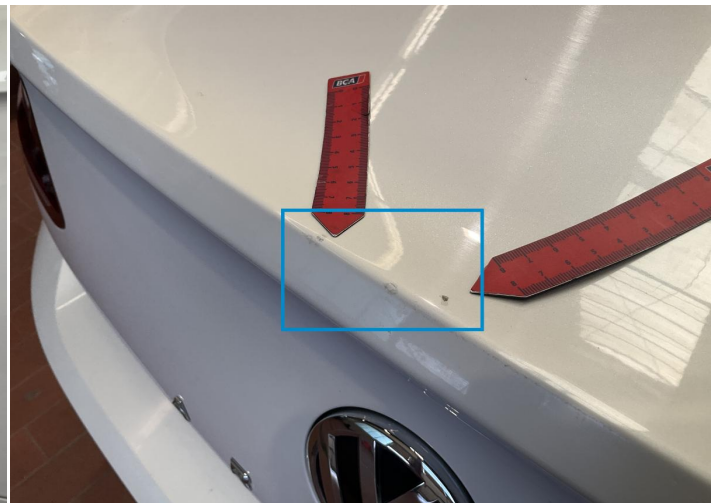
5. Rocker Panel / Center Left
Paint / Scratch / Scuff -



6. Seat Cushion / Front Left
Interior / Scratched -



7. Fender / Back Left
Bodywork / Dent / Dent -



8. Tailgate
Paint / Stone Chip -



9. Rim / Front Right
Out of Bodywork / Scratch -



10.
Interior / Scratched -

Mechanical Condition

Control Lights

ABS Warning Light	✓	ESP Fault/Traction Control Malfunction Light	✓
Diesel Particulate Filter Light	✓	Airbag Warning Light	✓
Oil Pressure Warning Light	✓	Brake Warning Light	✓
Power Steering Warning Light	✓	Alternator / Battery	✓
No Dashboard Lights	✓	Display Defect	✓
Service Light	✓	Tire Pressure Monitoring System	!

Engine

Engine Status / EML	✓	Engine Leak Visible	✓
Engine Starts	✓		

Gearbox

Gear Box	✓
----------	---

Levels

Brakes Fluid	✓	Coolant Fluid	✓
--------------	---	---------------	---

Equipments Test

Central Locking	✓	Main & Spare Keys Functioning	✓
Electric Windows	✓	Navigation System	✓
Audio Equipment	✓	Parking Sensors / Cameras Functioning	✓
AC / Heating System	✓	Other Equipments	✓

Test Drive Inspection

Steering Wheel

Steering | Noise / Anomaly

Engine

Engine Noise		The Gears Scratch / Skip / Abnormal Operation	
Fume Quantity		Power Loss	

Brake

Brake System Anomaly

General

Test Driven Status Not Performed

- No troubles detected, good condition or correct tests, according to vehicle age and mileage**
- Damages or malfunction detected that requires repairs by the buyer**
- Not applicable**
- Not tested**

Disclaimer

Please also note the "UserGuide condition report", which shows the scope of the vehicle description. [User Guide](#)