



Expertise

Protocol number: 41516539
Order No. / Reference: 25210668
Inspection date: 11 Sept 2025

Manufacturer: Volkswagen

Model: Passat Variant 2.0 TDI SCR DSG Business

VIN: WVVZZZ3CZPE010710



Vehicle details	
Manufacturer / Type / Model / Equipment	
Volkswagen Passat Variant 2.0 TDI SCR DSG Business	
Vehicle Identification number	WVVZZZ3CZPE010710
Mileage (Read)	135,964 km
First registration	28 Sept 2022
Number of holders	1
Power / Engine displacement	110 kw / 1,968 ccm
Fuel type / Cylinder	Diesel / 4
Gearbox / Number of gears	Automatic / 7
Type of drive	Front drive
Type of vehicle	Station wagon
Colour / colour code	Scale Silver Metallic
Doors / Seats	5 / 5
Upholstery type	Cloth
Colour of upholstery	Black-Grey



Vehicle details

Maintenance booklet / proof	digital proof / complete	Next maintenance in	12,000 km
Last maintenance on / at	04/2025 at 122,845 km		
Key is / should be	2 / 2	FZG documents	ZB#2 (B) was available (copy), ZB#1 (S) was not available
		Letter No.	GM712616
Previous damage / Accident	None detectable	Repainting	Detectable
Inspection conditions	sufficient	Lifting equipment / pit	yes
Test drive	Not performed	Engine function test	Performed
Manufacturer key number/ type code number	0603 / BQS 03643		
Emission standard	EURO6;WLTP;AP;PI/CI; M, N1 I	Fine dust sticker	
Permitted total weight	2,200 kg	Empty weight	

Tyres

Mounted tyres

#	Tyre size	Type of tyre	Manufacturer	Tread depth
1)	215/60 R16 95V	Summer tyres on Light alloy	Continental	5mm / 5mm
2)	215/60 R16 95V	Summer tyres on Light alloy	Continental	5mm / 5mm

Additional tyres

#	Tyre size	Type of tyre	Manufacturer	Tread depth
1)	215/60 R16 99H	Winter tyres on Steel	Pirelli	6mm / 6mm
2)	215/60 R16 99H	Winter tyres on Steel	Pirelli	6mm / 6mm

Replacement

Typ	Tyre size	Type of tyre	Manufacturer	Tread depth
E	215/60 R16 95V	Summer tyres on Steel	Continental	5 mm

Legend: Tread depth information for tires on the left is in the first place, for tires on the right is in the second place on the axle in the direction of travel

Equipment

Standard equipment

- | | |
|---|---|
| <ul style="list-style-type: none"> • Airbag for driver and front passenger • Anti-lock braking system (ABS) • Automatic distance control ACC "stop & go", including speed limiter • Cup holders (2) front • Brake light, third • Headlining in Mistral Grey • diesel particulate filter • Parking aid - warning signals for obstacles in the front and rear areas • Electronic stabilization program and electromechanical brake booster • Front windscreen in laminated safety glass, heat and sound insulating • Transmission: 7-speed DSG • ISOFIX anchorage points • Headrests (3) rear • LED fog lights and cornering lights • LED headlights with daytime running lights • Headlight range adjustment • Front center armrest height and length adjustable, with storage box • Mesh partition • Emergency braking assistant "Front Assist" (for automatic distance control ACC up to 210 km/h) • Upholstery: "Business" fabric • Radio "Composition" • Radio accessories: Digital radio reception DAB+ • Wheels: 4 light alloy wheels "Sepang" 6.5 J x 16 • Rear seat bench undivided, backrest asymmetrically divided and foldable, with center armrest • Power steering • Seats: Comfort seats in the front • Seats: Front seats height adjustable • Start-stop system • Telephone interface • First aid kit, warning triangle and safety vest • Electronic immobilizer | <ul style="list-style-type: none"> • Airbag, head airbag system for front and rear passengers • App Connect • Exterior mirrors electrically adjustable, heated, ambient lighting • Hill start assist • Chrome strips on the side windows • Roof rails black • tachometer • LED entry/warning lights in the front doors • Electronic parking brake including auto-hold function • Automatic headlight switching • Remote release for the trunk lid • Pedestrian detection • Luggage compartment floor can be raised • Interior lights with switch-off delay and dimming function • Air conditioning • Front headrests • LED taillights • Steering wheel: Multifunction steering wheel in leather, with shift paddles • Multifunction display "Premium" with multi-color display • Fatigue detection • Non-smoking version • Emergency call service • Package: Light and Vision Package "Plus" • Proactive occupant protection system in conjunction with "Front Assist" • Tire pressure monitoring indicator (passive) • Wheels: Tire Mobility Set • Leather gearshift knob • Keyless start system without safe lock • Seat belts: three-point automatic seat belt • Seats: Lumbar supports in front • Lane keeping assistant "Lane Assist" • 12V socket on the rear center console • Textile floor mats • Warning sound and light for unfastened seat belts at the front and rear |
|---|---|

Extra equipment

- | | |
|---|---|
| <ul style="list-style-type: none"> • App-Connect Wireless (Volkswagen offers three interfaces for connecting smartphones with numerous options: - Apple CarPlay - Android Auto from Google - MirrorLink) • trunk tray • Paint finish: metallic | <ul style="list-style-type: none"> • Chassis: Rear suspension with fully automatic level control • Removable luggage compartment protective mat (back of the rear seat backrest with black rubber covering) |
|---|---|



- Package: "Business Premium" package including navigation (from Business) (2 USB-C ports in the front, USB-C charging socket in the rear, 230V socket App-Connect including wireless, Apple CarPlay, Android Auto, "Travel Assist" driving assistant and "Lane Assist" lane keeping assistant, Air Care Climatronic with 3-zone temperature control, active combo filter and rear controls, electric lumbar support on the driver's side, massage function on the driver's side, "Rear View" reversing camera, heated windshield washer nozzles, Comfort telephone interface, inductive charging function, heated front seats)
- "Comfort" telephone interface with inductive charging function (hands-free system)
- "Discover Media" navigation system including "Streaming & Internet" (4x20 watt user interface with proximity sensor, dual tuner with phase diversity, vehicle menu speed, volume adjustment, 2D map display, tone control, triple TFT display with touchscreen operation, "Discover Media" navigation system including "Streaming & Internet," MP3 radio, telephone contact address for navigation, telephone interface, 2 USB ports also for iPod/iPhone, traffic sign recognition, "VW Media Control," We Connect Plus, 3 years, including We Connect route guidance, dynamic RDS TMC tuner)
- Wheels: Spare wheel in driving tires, steel

Brief expert findings

Documents submitted	At the time of the inspection, the registration certificate Part 2 (letter) was available, but the registration certificate Part 1 (certificate) was not. (Copy)
VIN comparison	The vehicle identification number (VIN) was read from the vehicle and its conformity with the submitted documents was verified during the inspection by the undersigned.
Inspection	The inspection conditions were sufficient for the assessment of the vehicle. Lifting equipment and a pit were available for examining the vehicle.
Test drive	No test drive/maneuvering was carried out during the inspection of the vehicle.
Engine function test	An engine test run was performed.

Value reducing factors

No.	Component group	Description
1	Misc.	Main inspection - No evidence - No deduction
2	Equipment	Vehicle key (Batterie) - Empty - Replace
3	Tail light	Tail lamp - left side - Broken / torn - Replace
4	Front bumper	Front bumper - Scratched - Paint
5	Rear bumper	Rear bumper - Scratch(es) - Paint
6	Body	Body - Damage by hail - repair according to calculation

Wear and tear

No.	Component group	Description
1	Vehicle glazing	Windscreen - Stone chips - No deduction
2	Trim / covers	Boot lid - interior trim - Scratch(es) - No deduction

The vehicle shows signs of wear commensurate with its age and use.

Repainting

No.	Repainting
1	Roof, Professionally carried out, Invoice of repair done Non-existent
2	Boot lid / rear door, Professionally carried out, Invoice of repair done Non-existent
3	Mudguard - left side, Professionally carried out, Invoice of repair done Non-existent
4	Mudguard - right side, Professionally carried out, Invoice of repair done Non-existent
5	Side panel - rear left side, Professionally carried out, Invoice of repair done Non-existent
6	Side panel - rear right side, Professionally carried out, Invoice of repair done Non-existent
7	Door - rear left side, Professionally carried out, Invoice of repair done Non-existent
8	Door - rear right side, Professionally carried out, Invoice of repair done Non-existent



No. Repainting

- 9 Door - front left side, Professionally carried out, Invoice of repair done Non-existent
- 10 Door - front right side, Professionally carried out, Invoice of repair done Non-existent

Paint coat thickness measurement

Roof	182 µm	Boot lid / rear door	175 µm
Mudguard - left side	152 µm	Mudguard - right side	181 µm
Side panel - rear left side	187 µm	Side panel - rear right side	178 µm
Door - rear left side	162 µm	Door - rear right side	174 µm
Door - front left side	158 µm	Door - front right side	184 µm

Order/Scope of order

The order was placed to prepare a sales report for the vehicle described. This includes the following:

- Description of core relevant information about the vehicle
- Documentation of equipment features
(*Delivery by third-party service providers*)
- Documentation of damage, defects, missing parts
- Documentation of previous damage, unrepaired previous damage, repainting
- a brief visual or functional inspection of the equipment details if possible.
(*Functional tests of driver assistance systems are not included in the scope of services!*)
- a photo documentation of the vehicle

Basis for the order

This product is based on the Alphabet Fuhrpark GmbH guidelines for vehicle returns and valuations. The expert makes the explicit findings in each individual case objectively within the framework of the specified standards based on his or her own expertise.

The vehicle inspection takes place in a disassembled state.

Damage or defects that can only be detected during disassembly/diagnosis work or through advanced knowledge remain within the scope of the prognosis risk. An extended risk exists for concealed defects caused by fraudulent deception and not identifiable by the expert.

Damage or defects resulting from normal use or wear and tear of the vehicle will be accepted according to the applicable standard.

There was no explicit identification or monetary consideration of the expected features within the product.

Features which in their nature and severity slightly exceed normal use but do not constitute unacceptable damage will be documented and identified under signs of use if necessary.

Damage or defects which, according to the underlying standard, can no longer be attributed to normal use or wear and tear are listed in the product under "Depreciating Factors".

Depending on the product specification, a monetary ID can be provided. If this takes place, the costs can be 100% d or pro rata depending on the vehicle's age and mileage.

Previous damages

Apparently, no repaired previous damage could be found on the vehicle.

Comments

Die beigefügte Reparaturkostenkalkulation wurde nach bestem Wissen und Gewissen im demontagefreien Zustand erstellt. Es können Mehrkosten und somit Abweichung der für den Hagelschaden ausgewiesener Reparaturkosten nicht ausgeschlossen werden.



Figure 1: Diagonal front (left)



Figure 2: Diagonal front (right)



Figure 3: Diagonal rear (left)



Figure 4: Diagonal rear (right)



Figure 5: Interior - front



Figure 6: Interior - rear



Figure 7: Instrument cluster



Figure 8: Instrument panel



Figure 9: Interior 360° view ([Online link](#))



Figure 10: Cargo area



Figure 11: VIN



Figure 12: Mounted tyres



Figure 13: Documents



Figure 14: Additional tyres



Figure 15: Navigation



Figure 16: Misc.

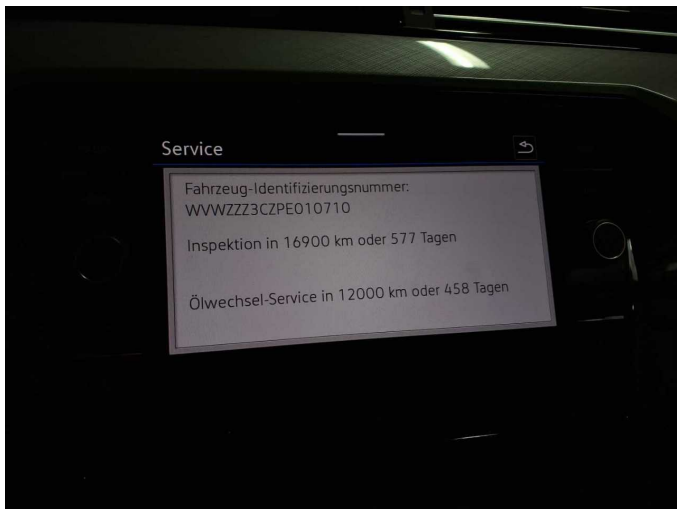


Figure 17: Misc.



Figure 18: Misc.



Figure 19: Misc.



Figure 20: Misc.



Figure 21: Misc.



Figure 22: Misc.



Figure 23: Misc.



Figure 24: Misc.



Figure 25: Misc.



Figure 26: Misc.

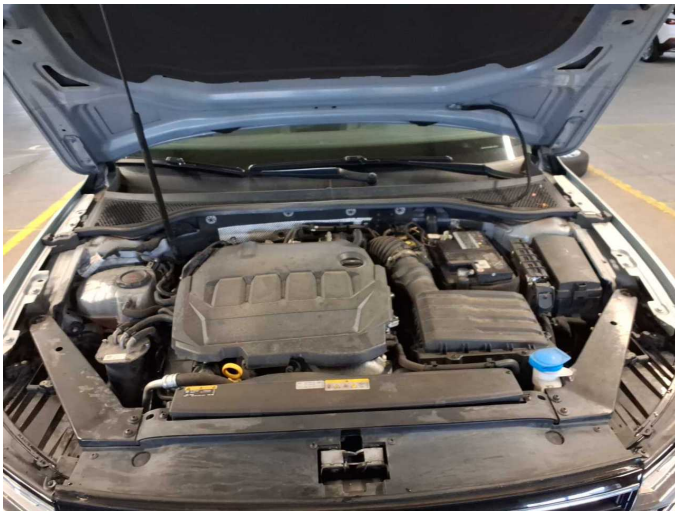


Figure 27: Misc.



Figure 28: Misc.



Figure 29: Misc.



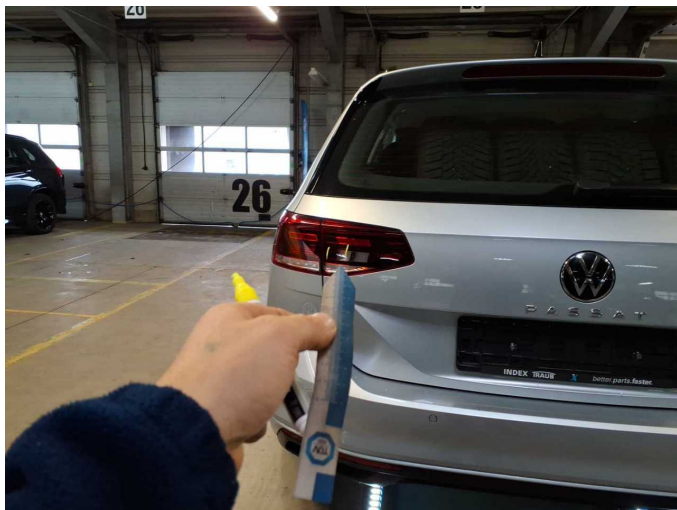
Figure 30: Misc.



Figure 31: Misc.



Damage 2: Equipment: Vehicle key (Batterie) - Empty - Replace



Damage 3: Tail light: Tail lamp - left side - Broken / torn - Replace



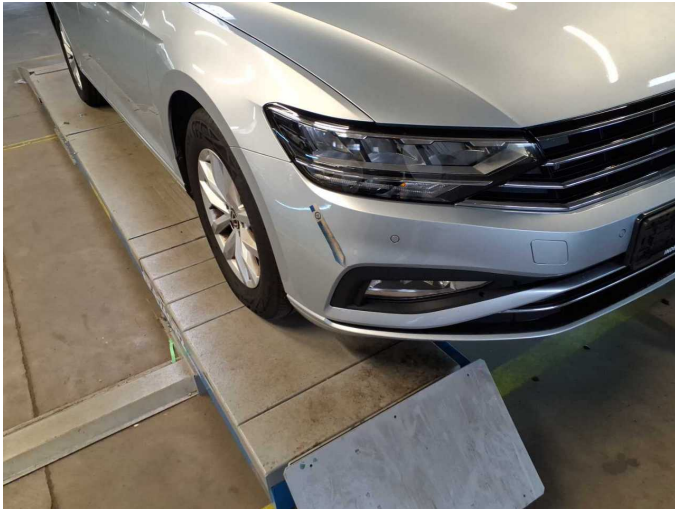
Damage 3: Tail light: Tail lamp - left side - Broken / torn - Replace



Damage 4: Front bumper: Front bumper - Scratched - Paint



Damage 4: Front bumper: Front bumper - Scratched - Paint



Damage 4: Front bumper: Front bumper - Scratched - Paint



Damage 4: Front bumper: Front bumper - Scratched - Paint



Damage 4: Front bumper: Front bumper - Scratched - Paint



Damage 4: Front bumper: Front bumper - Scratched - Paint



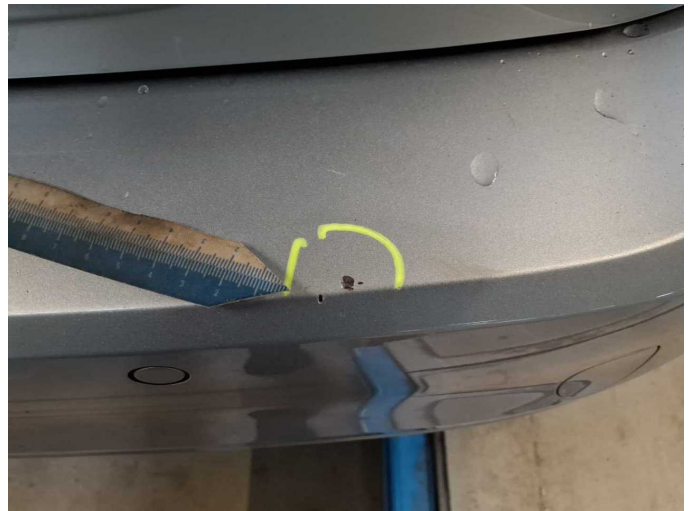
Damage 5: Rear bumper: Rear bumper - Scratch(es) - Paint



Damage 5: Rear bumper: Rear bumper - Scratch(es) - Paint



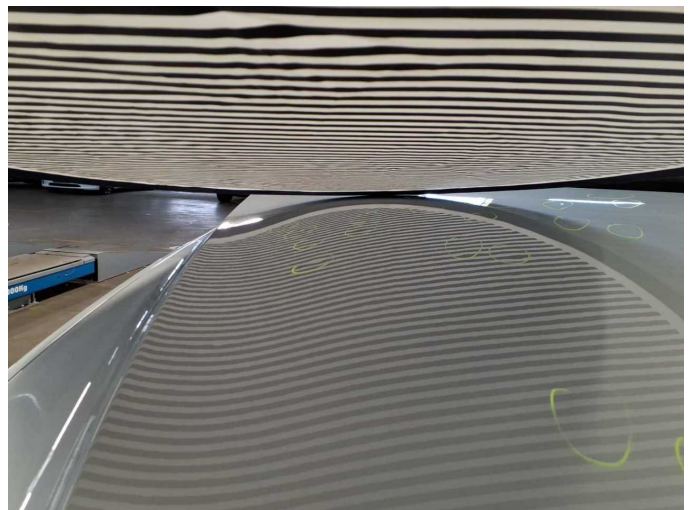
Damage 5: Rear bumper: Rear bumper - Scratch(es) - Paint



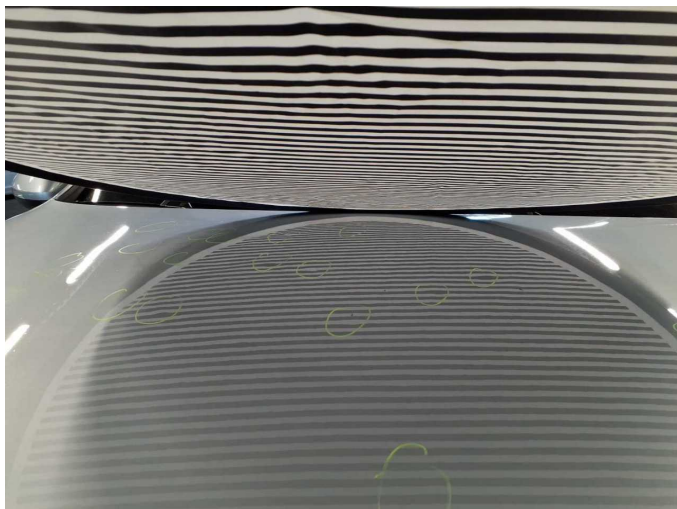
Damage 5: Rear bumper: Rear bumper - Scratch(es) - Paint



Damage 6: Body: Body - Damage by hail - repair according to calculation



Damage 6: Body: Body - Damage by hail - repair according to calculation



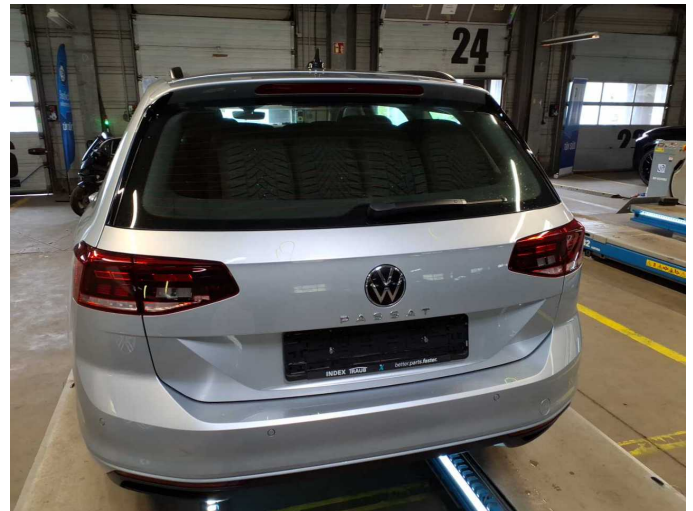
Damage 6: Body: Body - Damage by hail - repair according to calculation



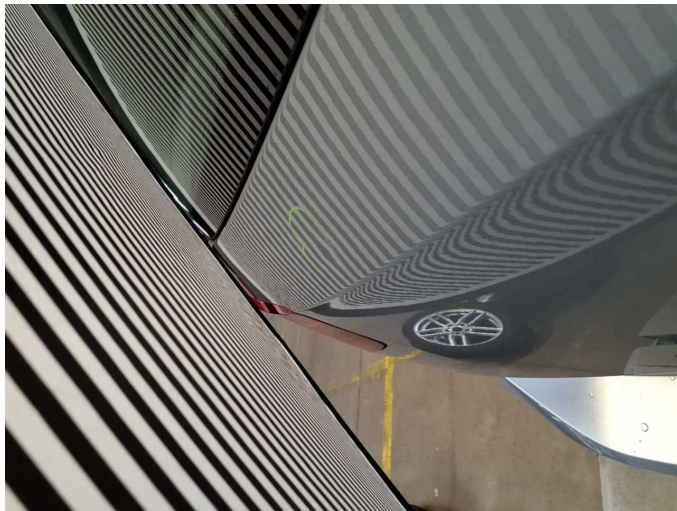
Damage 6: Body: Body - Damage by hail - repair according to calculation



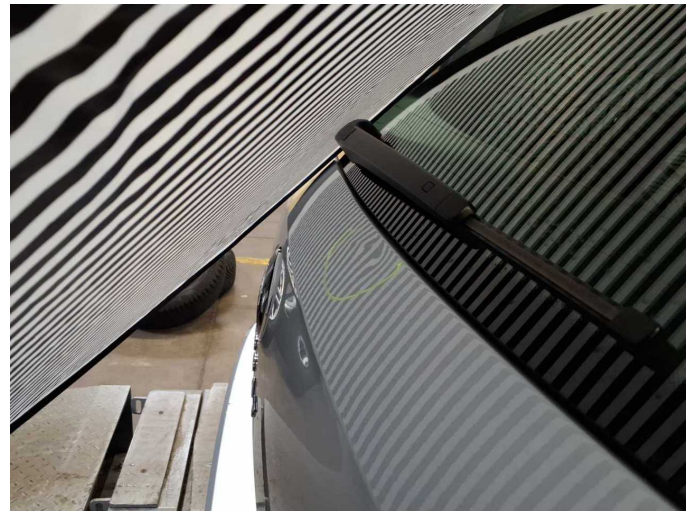
Damage 6: Body: Body - Damage by hail - repair according to calculation



Damage 6: Body: Body - Damage by hail - repair according to calculation



Damage 6: Body: Body - Damage by hail - repair according to calculation



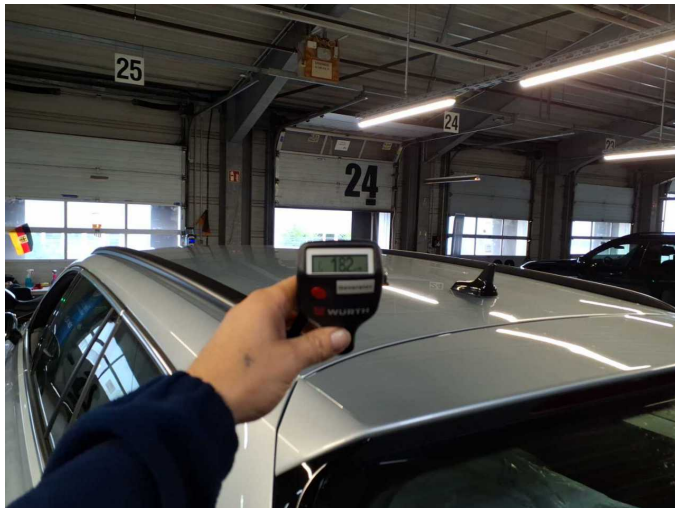
Damage 6: Body: Body - Damage by hail - repair according to calculation



Wear and tear 2: Trim / covers: Boot lid - interior trim - Scratch(es) - No deduction



Wear and tear 2: Trim / covers: Boot lid - interior trim - Scratch(es) - No deduction



Repainting 1: Roof



Repainting 2: Boot lid / rear door



Repainting 3: Mudguard - left side



Repainting 4: Mudguard - right side



Repainting 5: Side panel - rear left side



Repainting 6: Side panel - rear right side



Repainting 7: Door - rear left side



Repainting 8: Door - rear right side



Repainting 9: Door - front left side



Repainting 10: Door - front right side



Wartungshistorie

(gemäß Auftraggeber Informationen)

Fahrgestellnummer: WVVZZZ3CZPE010710

Hersteller / Modell: VOLKSWAGEN VW Passat Variant 2.0 TDI SCR DSG Business

Datum	KM-Stand	Beschreibung
11.04.2025	122.845	Getriebeöl ern/prüfen; Motoröl b. Wartung; Ölfilter ern; Regelwartungsdienst; Wartung Sonstiges
05.08.2024	93.664	Bremsflüssigkeit; Bremsflüssigkeit ern; Kraftstofffilter ern; Luftfiltereinsatz ern; Motoröl b. Wartung; Ölfilter ern; Regelwartungsdienst; Systemtest/ Eigendiagnose; Wartung Sonstiges
26.06.2024	85.250	Bremse Sonstiges; Bremsklötze hinten; Bremsklötze vorne; Bremsscheiben hinten; Bremsscheiben vorne
13.02.2024	61.524	Motoröl b. Wartung; Ölfilter ern; Regelwartungsdienst; Wartung Sonstiges
09.06.2023	30.795	Motoröl b. Wartung; Ölfilter ern; Regelwartungsdienst; Wartung Sonstiges