



Expertise

Protocol number: 41482580
Order No. / Reference: 25218776
Inspection date: 10 Sept 2025

Manufacturer: Volkswagen

Model: Passat Variant 2.0 TDI SCR Business

VIN: WVGZZZ3CZPE002219



Vehicle details	
Manufacturer / Type / Model / Equipment	
Volkswagen Passat Variant 2.0 TDI SCR Business	
Vehicle Identification number	WVGZZZ3CZPE002219
Mileage (Read)	121,388 km
First registration	29 Aug 2022
Number of holders	1
Power / Engine displacement	110 kw / 1,968 ccm
Fuel type / Cylinder	Diesel / 4
Gearbox / Number of gears	Manual / 6
Type of drive	Front drive
Type of vehicle	Station wagon
Colour / colour code	clear white (9F0)
Doors / Seats	5 / 5
Upholstery type	Cloth
Colour of upholstery	Anthracite-Black



Vehicle details

Maintenance booklet / proof	digital proof / incomplete	Next maintenance in	3,000 km
Last maintenance on / at	01/2025 at 94,309 km		
Key is / should be	2 / 2	FZG documents	ZB#2 (B) was available (copy), ZB#1 (S) was not available
		Letter No.	GM612485
Previous damage / Accident	None detectable	Repainting	None detectable
Inspection conditions	sufficient	Lifting equipment / pit	yes
Test drive	Not performed	Engine function test	Performed
Manufacturer key number/ type code number	0603 / BQS 03280		
Emission standard	EURO6;WLTP;AP;PI/CI; M, N1 I	Fine dust sticker	
Permitted total weight	2,170 kg	Empty weight	

Tyres

Mounted tyres

#	Tyre size	Type of tyre	Manufacturer	Tread depth
1)	215/60 R16 95V	Summer tyres on Light alloy	Continental	3mm / 3mm
2)	215/60 R16 95V	Summer tyres on Light alloy	Continental	4mm / 4mm

Additional tyres

#	Tyre size	Type of tyre	Manufacturer	Tread depth
1)	215/60 R16 95H	Winter tyres on Steel rim with wheel cover	Dunlop	4mm / 4mm
2)	215/60 R16 95H	Winter tyres on Steel rim with wheel cover	Dunlop	5mm / 5mm

Replacement

Typ	Tyre size	Type of tyre	Manufacturer	Tread depth
	Tirefit	Expiration date 04/2026		

Legend: Tread depth information for tires on the left is in the first place, for tires on the right is in the second place on the axle in the direction of travel

Equipment

Standard equipment

- Airbag for driver and front passenger
- Anti-lock braking system (ABS)
- Automatic distance control ACC including speed limiter
- Cup holders (2) front
- Hill start assist
- Chrome strips on the side windows
- Roof rails black
- tachometer
- LED entry/warning lights in the front doors
- Electronic parking brake including auto-hold function
- Automatic headlight switching
- Remote release for the trunk lid
- Pedestrian detection
- Luggage compartment floor can be raised
- Interior lights with switch-off delay and dimming function
- Air conditioning
- Front headrests
- LED taillights
- Steering wheel: Multifunction steering wheel in leather
- Front center armrest height and length adjustable, with storage box
- Mesh partition
- Emergency braking assistant "Front Assist" (for automatic distance control ACC up to 210 km/h)
- Upholstery: "Business" fabric
- Radio "Composition"
- Radio accessories: Digital radio reception DAB+
- Wheels: 4 light alloy wheels "Sepang" 6.5 J x 16
- Rear seat bench undivided, backrest asymmetrically divided and foldable, with center armrest
- Seat belts: three-point automatic seat belt
- Seats: Lumbar supports in front
- Lane keeping assistant "Lane Assist"
- 12V socket on the rear center console
- Textile floor mats
- Warning sound and light for unfastened seat belts at the front and rear
- Airbag, head airbag system for front and rear passengers
- App Connect
- Exterior mirrors electrically adjustable, heated, ambient lighting
- Brake light, third
- Headlining in Mistral Grey
- diesel particulate filter
- Parking aid - warning signals for obstacles in the front and rear areas
- Electronic stabilization program and electromechanical brake booster
- Front windscreen in laminated safety glass, heat and sound insulating
- Transmission: 6-speed manual transmission
- ISOFIX anchorage points
- Headrests (3) rear
- LED fog lights and cornering lights
- LED headlights with daytime running lights
- Headlight range adjustment
- Multifunction display "Premium" with multi-color display
- Fatigue detection
- Non-smoking version
- Emergency call service
- Package: Light and Vision Package "Plus"
- Proactive occupant protection system in conjunction with "Front Assist"
- Tire pressure monitoring indicator (passive)
- Wheels: Tire Mobility Set
- Keyless start system without safe lock
- Power steering
- Seats: Comfort seats in the front
- Seats: Front seats height adjustable
- Start-stop system
- Telephone interface
- First aid kit, warning triangle and safety vest
- Electronic immobilizer

Extra equipment

- Folding trailer hitch (with electric release)
- Roof rails, silver anodized
- Chassis: Rear suspension with fully automatic level control
- Head-up display
- Steering wheel: Multifunction steering wheel in leather, heated
- Headlining in titanium black
- Anti-theft alarm system (interior monitoring, backup horn and tow-away protection - illuminated vanity mirror in the sun visors, extendable sun visors)
- Paint finish: metallic



- Package: "Business Premium" package including navigation (from Business) (2 USB-C ports in the front, USB-C charging socket in the rear, 230V socket App-Connect including wireless, Apple CarPlay, Android Auto, "Travel Assist" driving assistant and "Lane Assist" lane keeping assistant, Air Care Climatronic with 3-zone temperature control, active combo filter and rear controls, electric lumbar support on the driver's side, massage function on the driver's side, "Rear View" reversing camera, heated windshield washer nozzles, Comfort telephone interface, inductive charging function, heated front seats)
- Package: Ambient Lighting "Plus" (multi-colored ambient lighting - LED entry/warning lights in all doors - interior lights with switch-off delay and dimming function, 2 LED reading lights each at the front and rear)
- Package: "IQ.DRIVE" assistance package including IQ.LIGHT in conjunction with the Business Package (manual transmission) (Dynamic high beam control "Dyn. Light Assist" - "Travel Assist" driving assistant, "Lane Assist" lane keeping assistant - pedestrian detection - LED matrix headlights, LED daytime running lights, cornering lights, and dynamic indicators - LED taillights with dynamic indicators - dynamic headlight range control with dynamic cornering lights - rear fog lights on both sides, reversing lights on both sides - "Park Assist" parking assistant including parking aid - "Side Assist" lane change assistant and rear traffic exit assistant)
- Rear side windows and rear window tinted
- Seats: ergoComfort seat with 14-way power adjustment, memory and massage on the driver's side. In conjunction with the Business Package (electrically folding exterior mirrors, dimming on the driver's side, ambient lighting and memory - electrically adjustable front lumbar supports, massage function on the driver's side - electrically adjustable front seats, ergoComfort seat on the driver's side, with memory function and easy entry)
- "Discover Pro" navigation system including "Streaming & Internet" (4x20W app-controlled, wireless digital cockpit, operation with proximity sensor, dual tuner with phase shift, DAB vehicle menu, speed, volume adjustment, gesture control, 32GB SSD hard drive, 2D map display, sound control, triple TFT display with touchscreen, MP3 navigation for Europe, voice control, telephone contact address, telephone interface, "Comfort" with inductive charging, 2 USB iPod/iPhone traffic signs, "We Connect Plus" including "We Connect" destination guidance, dynamic RDS TMC tuner, pre-programmed mobile key, for vehicle, Smart.)
- Package: "Easy Open & Close" package including safe security (extendable and removable luggage compartment cover with electric opening - tailgate with sensor-controlled opening and closing, with remote unlocking - keyless locking and starting system "Keyless Access" with safe security)
- Panoramic tilt/slide roof (with rear panoramic roof)
- Proactive occupant protection system and lane change assistant "Side Assist" (Proactive occupant protection system in conjunction with "Front Assist" and "Side Assist" - lane change assistant "Side Assist" and rear traffic assistant)
- Keyless access locking and starting system with safe security (automatic locking and starting system where the vehicle key is carried but not in the hand – if you carry the vehicle key with you and approach the vehicle, it is automatically unlocked; the engine is started conveniently using the start button)
- Sun blinds on the rear door windows
- Voice control
- Area View including rear view camera (displays the vehicle's surroundings in real time on the radio/navigation system display – supports when exiting from unclear exits or side streets, when entering and exiting parking spaces, when manoeuvring with a trailer, or when driving off-road)

Brief expert findings

Documents submitted	At the time of the inspection, the registration certificate Part 2 (letter) was available, but the registration certificate Part 1 (certificate) was not. (Copy)
VIN comparison	The vehicle identification number (VIN) was read from the vehicle and its conformity with the submitted documents was verified during the inspection by the undersigned.
Inspection	The inspection conditions were sufficient for the assessment of the vehicle. Lifting equipment and a pit were available for examining the vehicle.
Test drive	No test drive/manoeuvring was carried out during the inspection of the vehicle.
Engine function test	An engine test run was performed.

Value reducing factors

No.	Component group	Description
1	Body	Body - Glued / labelled - De-glue / neutralise
2	Wing mirror - right side	Cap - Scratched - Smart repair
3	Door - front right side	Door edge - Scratched - Smart repair
4	Door - front left side	Door edge - Scratched - Smart repair



No.	Component group	Description
5	Boot lid / rear door	Boot lid - Scratched - Smart repair
6	Trim / covers	Boot lid - interior trim - Scratched - Replace
7	Vehicle glazing	Rear window - Scratched - Loss in value
8	Trim / covers	Cargo area - lining - right side - Scratched - Replace
9	Trim / covers	Cargo area - lining -left side - Scratched - Replace
10	Front bumper	Front bumper (Sandstrahleffekt) - Stone chips - Paint

Wear and tear

No.	Component group	Description
1	Interior	Cargo area floor - Scratched - No deduction
2	Bonnet	Bonnet (Kratzer) - Stone chips - No deduction
3	Boot lid / rear door	Boot lid - dent(s) - No deduction
4	Rear bumper	Rear bumper - Scratched - No deduction
5	Body	Body (oberflächlich) - Scratch(es) - No deduction
6	Headlight	Headlight - left side (+verschmutzt) - Stone chips - No deduction
7	Headlight	Headlight - right side (+verschmutzt) - Stone chips - No deduction

The vehicle shows signs of wear commensurate with its age and use.

Order/Scope of order

The order was placed to prepare a sales report for the vehicle described. This includes the following:

- Description of core relevant information about the vehicle
- Documentation of equipment features
(*Delivery by third-party service providers*)
- Documentation of damage, defects, missing parts
- Documentation of previous damage, unrepaired previous damage, repainting
- a brief visual or functional inspection of the equipment details if possible.
(*Functional tests of driver assistance systems are not included in the scope of services!*)
- a photo documentation of the vehicle

Basis for the order

This product is based on the Alphabet Fuhrpark GmbH guidelines for vehicle returns and valuations. The expert makes the explicit findings in each individual case objectively within the framework of the specified standards based on his or her own expertise.

The vehicle inspection takes place in a disassembled state.

Damage or defects that can only be detected during disassembly/diagnosis work or through advanced knowledge remain within the scope of the prognosis risk. An extended risk exists for concealed defects caused by fraudulent deception and not identifiable by the expert.

Damage or defects resulting from normal use or wear and tear of the vehicle will be accepted according to the applicable standard.

There was no explicit identification or monetary consideration of the expected features within the product.

Features which in their nature and severity slightly exceed normal use but do not constitute unacceptable damage will be documented and identified under signs of use if necessary.

Damage or defects which, according to the underlying standard, can no longer be attributed to normal use or wear and tear are listed in the product under "Depreciating Factors".

Depending on the product specification, a monetary ID can be provided. If this takes place, the costs can be 100% d or pro rata depending on the vehicle's age and mileage.



Previous damages

Apparently, no repaired previous damage could be found on the vehicle.

Comments

- Winterradsatz ist kein Bestandteil des Auslieferungsumfangs.



Figure 1: Diagonal front (left)



Figure 2: Diagonal front (right)



Figure 3: Diagonal rear (left)



Figure 4: Diagonal rear (right)



Figure 5: Interior - front



Figure 6: Interior - rear



Figure 7: Instrument cluster



Figure 8: Instrument panel



Figure 9: Interior 360° view ([Online link](#))



Figure 10: Cargo area



Figure 11: VIN



Figure 12: Mounted tyres



Figure 13: Documents

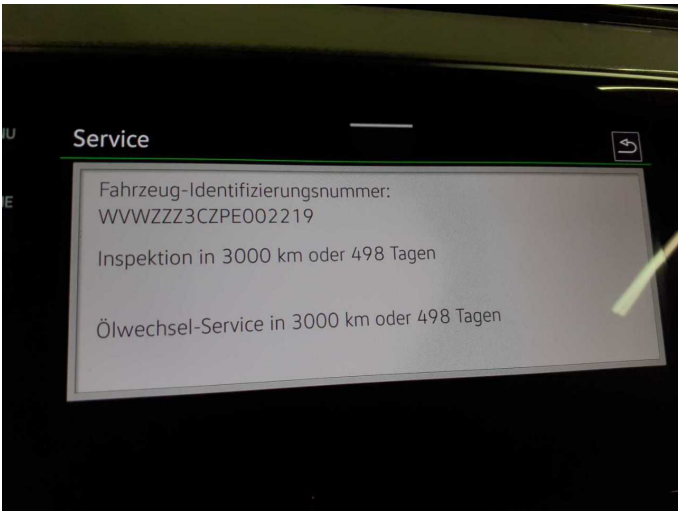


Figure 14: Documents



Figure 15: Documents



Figure 16: Additional tyres



Figure 17: Additional tyres



Figure 18: Navigation



Figure 19: Misc.



Figure 20: Misc.



Figure 21: Misc.



Figure 22: Misc.



Figure 23: Misc.



Figure 24: Misc.



Figure 25: Misc.



Figure 26: Misc.

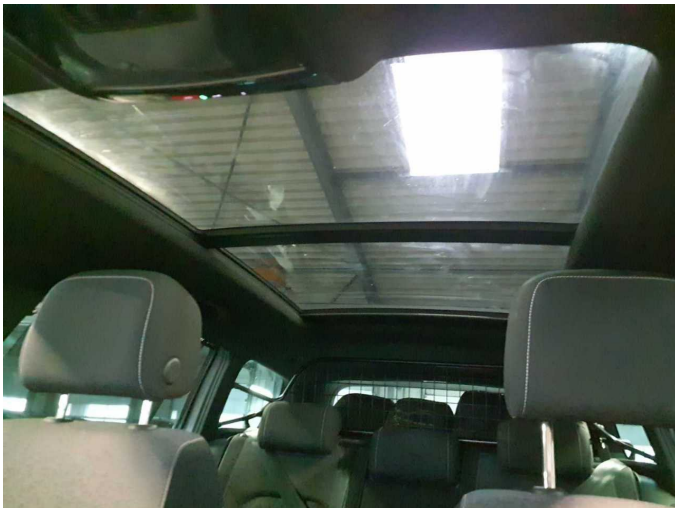


Figure 27: Misc.

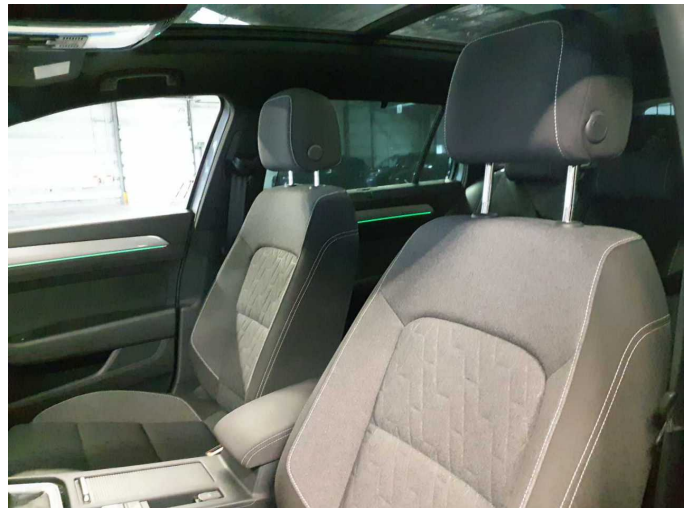


Figure 28: Misc.

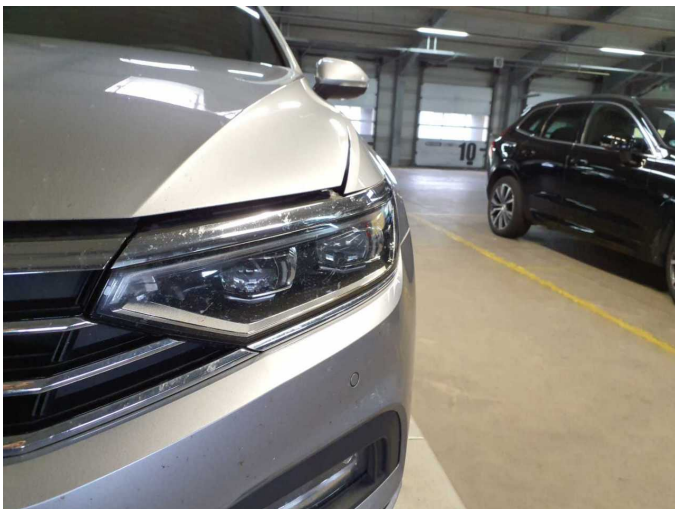


Figure 29: Misc.

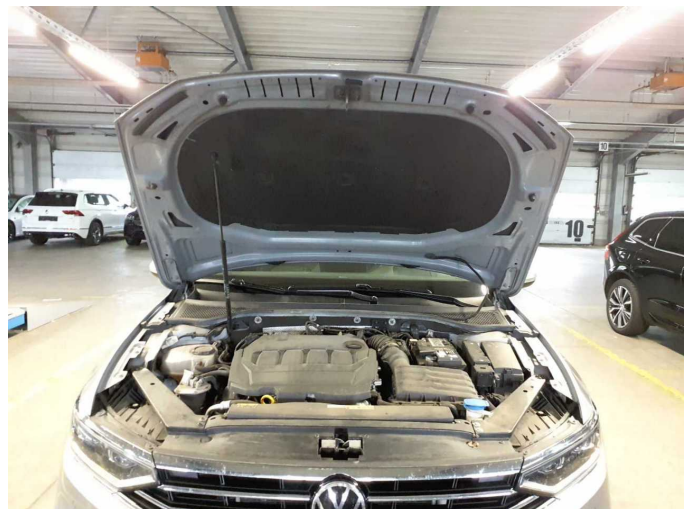


Figure 30: Misc.



Figure 31: Misc.



Figure 32: Misc.



Figure 33: Misc.

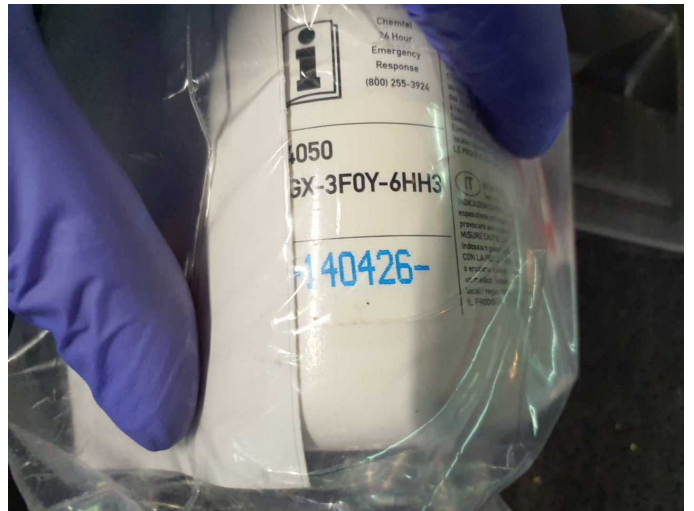


Figure 34: Misc.



Figure 35: Misc.



Figure 36: Misc.



Damage 1: Body: Body - Glued / labelled - De-glue / neutralise



Damage 1: Body: Body - Glued / labelled - De-glue / neutralise



Damage 1: Body: Body - Glued / labelled - De-glue / neutralise



Damage 2: Wing mirror - right side: Cap - Scratched - Smart repair



Damage 2: Wing mirror - right side: Cap - Scratched - Smart repair



Damage 3: Door - front right side: Door edge - Scratched - Smart repair



Damage 3: Door - front right side: Door edge - Scratched - Smart repair



Damage 4: Door - front left side: Door edge - Scratched - Smart repair



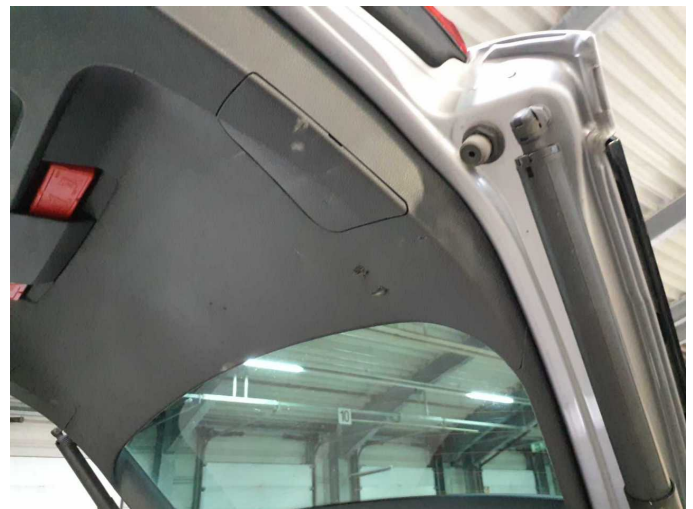
Damage 4: Door - front left side: Door edge - Scratched - Smart repair



Damage 5: Boot lid / rear door: Boot lid - Scratched - Smart repair



Damage 5: Boot lid / rear door: Boot lid - Scratched - Smart repair



Damage 6: Trim / covers: Boot lid - interior trim - Scratched - Replace



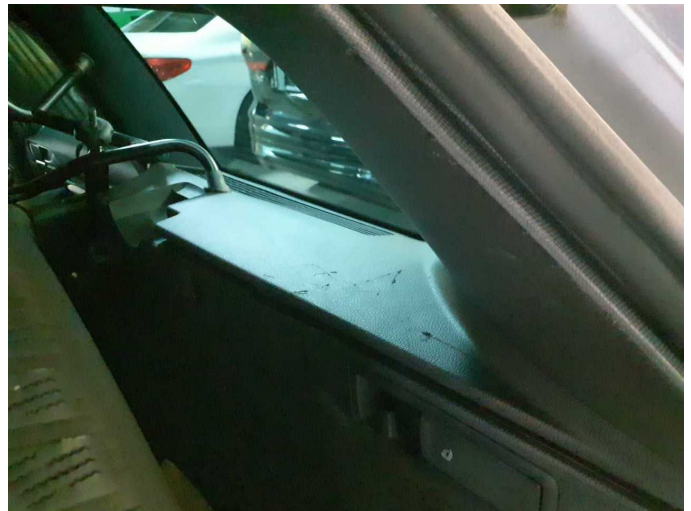
Damage 6: Trim / covers: Boot lid - interior trim - Scratched - Replace



Damage 7: Vehicle glazing: Rear window - Scratched - Loss in value



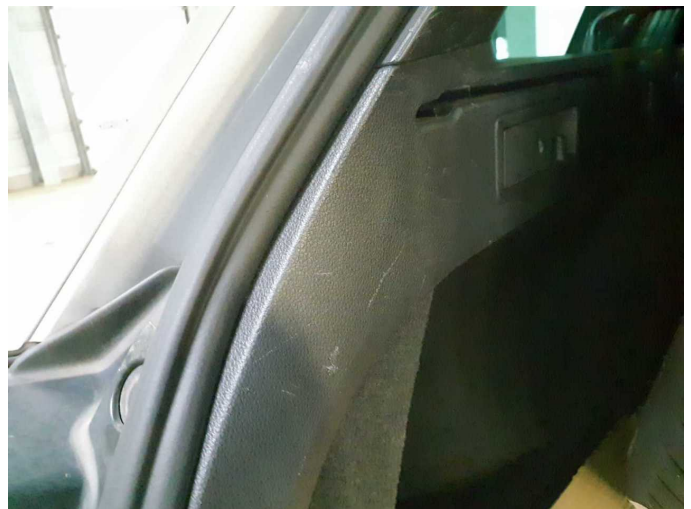
Damage 7: Vehicle glazing: Rear window - Scratched - Loss in value



Damage 8: Trim / covers: Cargo area - lining - right side - Scratched - Replace



Damage 8: Trim / covers: Cargo area - lining - right side - Scratched - Replace



Damage 9: Trim / covers: Cargo area - lining -left side - Scratched - Replace



Damage 9: Trim / covers: Cargo area - lining -left side - Scratched - Replace



Damage 9: Trim / covers: Cargo area - lining -left side - Scratched - Replace



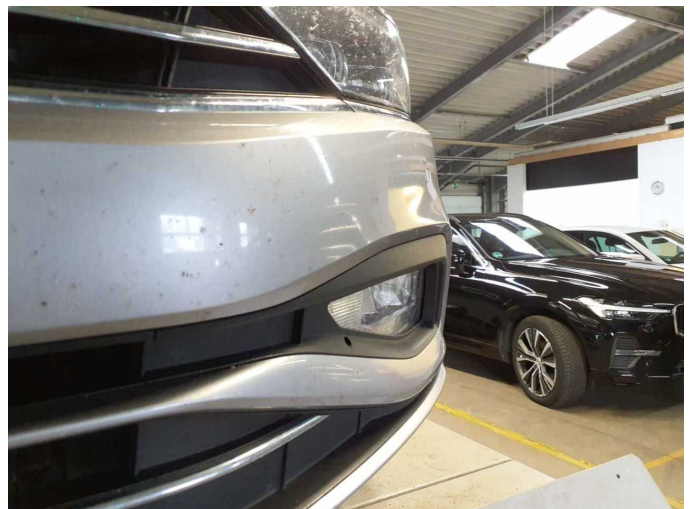
Damage 10: Front bumper: Front bumper (Sandstrahleffekt) - Stone chips - Paint



Damage 10: Front bumper: Front bumper (Sandstrahleffekt) - Stone chips - Paint



Damage 10: Front bumper: Front bumper (Sandstrahleffekt) - Stone chips - Paint



Damage 10: Front bumper: Front bumper (Sandstrahleffekt) - Stone chips - Paint



Damage 10: Front bumper: Front bumper (Sandstrahleffekt) - Stone chips - Paint



Damage 10: Front bumper: Front bumper (Sandstrahleffekt) - Stone chips - Paint



Damage 10: Front bumper: Front bumper (Sandstrahleffekt) - Stone chips - Paint



Damage 10: Front bumper: Front bumper (Sandstrahleffekt) - Stone chips - Paint



Wear and tear 1: Interior: Cargo area floor - Scratched - No deduction



Wear and tear 1: Interior: Cargo area floor - Scratched - No deduction



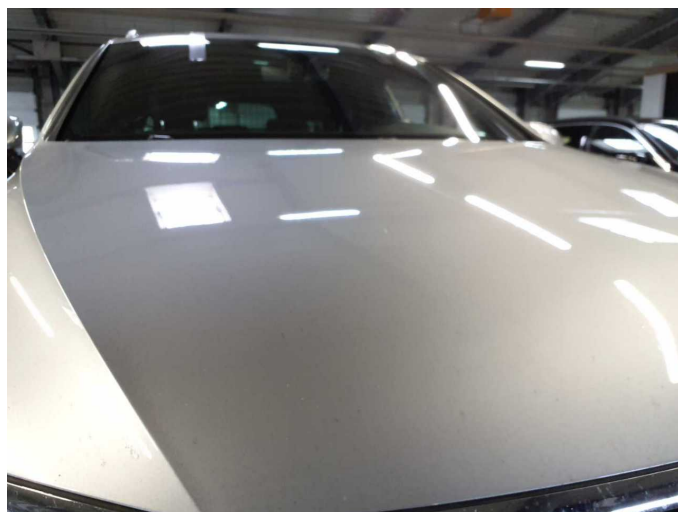
Wear and tear 1: Interior: Cargo area floor - Scratched - No deduction



Wear and tear 2: Bonnet: Bonnet (Kratzer) - Stone chips - No deduction



Wear and tear 2: Bonnet: Bonnet (Kratzer) - Stone chips - No deduction



Wear and tear 2: Bonnet: Bonnet (Kratzer) - Stone chips - No deduction



Wear and tear 2: Bonnet: Bonnet (Kratzer) - Stone chips - No deduction



Wear and tear 6: Headlight: Headlight - left side (+verschmutzt) - Stone chips - No deduction



Wear and tear 7: Headlight: Headlight - right side (+verschmutzt) - Stone chips - No deduction



Wartungshistorie

(gemäß Auftraggeber Informationen)

Fahrgestellnummer: WVVZZZ3CZPE002219

Hersteller / Modell: VOLKSWAGEN VW Passat Variant 2.0 TDI SCR Business

Datum	KM-Stand	Beschreibung
28.01.2025	94.309	Bremsflüssigkeit; Bremsflüssigkeit ern; Kraftstofffilter ern; Luftfiltereinsatz ern; Motoröl b. Wartung; Ölfilter ern; Regelwartungsdienst; Systemtest/ Eigendiagnose; Wartung Sonstiges
25.11.2024	87.683	Systemtest/Eigendiagnose
12.01.2024	65.630	Motoröl b. Wartung; Ölfilter ern; Regelwartungsdienst; Wartung Sonstiges
20.10.2023	57.552	Bremse Sonstiges; Bremsklötze hinten; Bremsklötze vorne; Bremsscheiben hinten; Bremsscheiben vorne
27.06.2023	33.752	Motoröl b. Wartung; Regelwartungsdienst