



Expertise

Protocol number: 41458658  
Order No. / Reference: 25176593  
Inspection date: 10 Sept 2025

Manufacturer: Volkswagen

Model: Passat Variant 1.4 TSI Plug-In-Hybrid DSG GTE

VIN: WVVZZZ3CZNE084364



Vehicle details	
Manufacturer / Type / Model / Equipment	
Volkswagen Passat Variant 1.4 TSI Plug-In-Hybrid DSG GTE	
Vehicle Identification number	WVVZZZ3CZNE084364
Mileage (Read)	77,230 km
First registration	4 Aug 2022
Number of holders	1
Power / Engine displacement	115 kw / 1,395 ccm
Fuel type / Cylinder	Hybr.B/E ext. edition / 4
Gearbox / Number of gears	Automatic / 6
Type of drive	Front drive
Type of vehicle	Station wagon
Colour / colour code	Deep Black Perleffekt
Doors / Seats	5 / 5
Upholstery type	Cloth
Colour of upholstery	Black-Grey



## Vehicle details

<b>Maintenance booklet / proof</b>	digital proof / complete	<b>Next maintenance in</b>	6,100 km
<b>Last maintenance on / at</b>	06/2025 at 68,312 km		
<b>Key is / should be</b>	2 / 2	<b>FZG documents</b>	ZB#2 (B) was available (copy), ZB#1 (S) was not available
		<b>Letter No.</b>	GM627734
<b>Previous damage / Accident</b>	Detectable	<b>Repainting</b>	None detectable
<b>Inspection conditions</b>	sufficient	<b>Lifting equipment / pit</b>	yes
<b>Test drive</b>	Not performed	<b>Engine function test</b>	Performed
<b>Manufacturer key number/ type code number</b>	0603 / BRZ 00113		
<b>Emission standard</b>	EURO6;WLTP;AP;PI/CI; M, N1 I	<b>Fine dust sticker</b>	
<b>Permitted total weight</b>	2,270 kg	<b>Empty weight</b>	

## Tyres

### Mounted tyres

#	Tyre size	Type of tyre	Manufacturer	Tread depth
1)	215/55 R17 94V	Summer tires (with run-flat tires) on Light alloy	Hankook	5mm / 5mm
2)	215/55 R17 94V	Summer tires (with run-flat tires) on Light alloy	Hankook	7mm / 7mm

### Additional tyres

#	Tyre size	Type of tyre	Manufacturer	Tread depth
1)	215/55 R17 94H	Winter tires (with run-flat tires) on Light alloy	Pirelli	6mm / 6mm
2)	215/55 R17 94H	Winter tires (with run-flat tires) on Light alloy	Pirelli	3mm / 3mm

**Legend:** Tread depth information for tires on the left is in the first place, for tires on the right is in the second place on the axle in the direction of travel



## Equipment

### Equipment

- Klimaanlage

### Standard equipment

- |   |   |
|---|---|
| <ul style="list-style-type: none"> <li>• Airbag for driver and front passenger</li> <li>• Anti-lock braking system (ABS)</li> <li>• Automatic distance control ACC "stop &amp; go", including speed limiter</li> <li>• Cup holders (2) front</li> <li>• Brake light, third</li> <li>• Headlining in Mistral Grey</li> <li>• tachometer</li> <li>• Parking aid - warning signals for obstacles in the front and rear areas</li> <li>• Automatic headlight switching</li> <li>• Front windscreen in laminated safety glass, heat and sound insulating</li> <li>• Transmission: 6-speed DSG</li> <li>• Rear window wiper</li> <li>• Interior mirror automatically dimming</li> <li>• Cable for AC charging station</li> <li>• Headrests (3) rear</li> <li>• Front headrests</li> <li>• LED headlights with daytime running lights</li> <li>• Headlight range adjustment</li> <li>• Front center armrest height and length adjustable, with storage box</li> <li>• Navigation system "Discover Media" including "Streaming &amp; Internet"</li> <li>• Non-smoking version</li> <li>• Emergency call service</li> <li>• Package: Light and Vision Package "Plus"</li> <li>• Proactive occupant protection system in conjunction with "Front Assist"</li> <li>• Wheels: 4 light alloy wheels "Montpellier" 7 J x 17 in black, surface polished</li> <li>• Keyless start system without safe lock</li> <li>• Seat belts: three-point automatic seat belt</li> <li>• Seats: Lumbar supports in front</li> <li>• Lane keeping assistant "Lane Assist"</li> <li>• 12V socket on the rear center console</li> <li>• Telephone interface</li> <li>• First aid kit, warning triangle and safety vest</li> <li>• Electronic immobilizer</li> <li>• Central locking with remote control</li> </ul> | <ul style="list-style-type: none"> <li>• Airbag, head airbag system for front and rear passengers</li> <li>• App-Connect Wireless</li> <li>• Exterior mirrors electrically adjustable, heated, ambient lighting</li> <li>• Hill start assist</li> <li>• Chrome strips on the side windows</li> <li>• Roof rails black</li> <li>• e-Sound</li> <li>• LED entry/warning lights in the front doors</li> <li>• Electronic parking brake including auto-hold function</li> <li>• Remote release for the trunk lid</li> <li>• Pedestrian detection</li> <li>• Luggage compartment floor can be raised</li> <li>• Rear window heated</li> <li>• Interior lights with switch-off delay and dimming function</li> <li>• ISOFIX anchorage points</li> <li>• Air Care Climatronic air conditioning system with 3-zone temperature control and active combination filter</li> <li>• LED taillights</li> <li>• Steering wheel: Multifunction sports steering wheel in leather, with shift paddles</li> <li>• Multifunction display "Premium" with multi-color display</li> <li>• Fatigue detection</li> <li>• Mains charging cable for household socket</li> <li>• Mesh partition</li> <li>• Emergency braking assistant "Front Assist" (for automatic distance control ACC up to 210 km/h)</li> <li>• Upholstery: "Business" fabric</li> <li>• Radio accessories: Digital radio reception DAB+</li> <li>• Tire pressure monitoring indicator (passive)</li> <li>• Rear seat bench undivided, backrest asymmetrically divided and foldable, with center armrest</li> <li>• Power steering</li> <li>• Seats: Comfort seats in the front</li> <li>• Seats: Front seats height adjustable</li> <li>• Start-stop system</li> <li>• Bumpers in body color</li> <li>• Textile floor mats</li> <li>• Warning sound and light for unfastened seat belts at the front and rear</li> </ul> |
|---|---|

### Extra equipment

- |   |   |
|---|---|
| <ul style="list-style-type: none"> <li>• All-weather floor mats for front and rear, 4-piece</li> <li>• Luggage compartment reversible mat for variable luggage compartment floor</li> </ul> | <ul style="list-style-type: none"> <li>• Anti-theft alarm system (interior monitoring, backup horn and tow-away protection - illuminated vanity mirror in the sun visors, extendable sun visors)</li> </ul> |
|---|---|



- Finish: pearl effect
- Package: "Business Premium" package including navigation (from Business) (2 USB-C ports in the front, USB-C charging socket in the rear, 230V socket App-Connect including wireless, Apple CarPlay, Android Auto, "Travel Assist" driving assistant and "Lane Assist" lane keeping assistant, Air Care Climatronic with 3-zone temperature control, active combo filter and rear controls, electric lumbar support on the driver's side, massage function on the driver's side, "Rear View" reversing camera, heated windshield washer nozzles, Comfort telephone interface, inductive charging function, heated front seats)
- Panoramic tilt/slide roof (with rear panoramic roof)
- Keyless start system with safe security
- "Discover Pro" navigation system including "Streaming & Internet" (4x20W app-controlled, wireless digital cockpit, operation with proximity sensor, dual tuner with phase shift, DAB vehicle menu, speed, volume adjustment, gesture control, 32GB SSD hard drive, 2D map display, sound control, triple TFT display with touchscreen, MP3 navigation for Europe, voice control, telephone contact address, telephone interface, "Comfort" with inductive charging, 2 USB iPod/iPhone traffic signs, "We Connect Plus" including "We Connect" destination guidance, dynamic RDS TMC tuner, pre-programmed mobile key, for vehicle, Smart.)
- Wheels: Tire Mobility Set no longer available
- Seats: Passenger seat backrest completely foldable

### Brief expert findings

Documents submitted	At the time of the inspection, the registration certificate Part 2 (letter) was available, but the registration certificate Part 1 (certificate) was not. (Copy)
VIN comparison	The vehicle identification number (VIN) was read from the vehicle and its conformity with the submitted documents was verified during the inspection by the undersigned.
Inspection	The inspection conditions were sufficient for the assessment of the vehicle. Lifting equipment and a pit were available for examining the vehicle.
Test drive	No test drive/maneuvering was carried out during the inspection of the vehicle.
Engine function test	An engine test run was performed.

### Value reducing factors

No.	Component group	Description
1	Trim / covers	Trim / covers - Damaged - Replace
2	Door - rear left side	Door - dent(s) - Smart repair
3	Door - front right side	Door - dent(s) - Smart repair
4	Rear bumper	Rear bumper - Scratch(es) - Smart repair
5	Sill - right side	Sill - Scratch(es) - Smart repair
6	Wheel / tyres	Alloy rim - front right side - Scratch(es) - Loss in value
7	Door - rear right side	Door - Scratch(es) - Paint
8	Front bumper	Front bumper - Scratch(es) - Paint
9	Side panel - rear right side	Sill - Dent / paintcoat damage - Repair and paint
10	Bonnet	Bonnet - Scratch(es) - Paint

### Wear and tear

No.	Component group	Description
1	Trim / covers	Boot lid - interior trim - Scratch(es) - No deduction
2	2nd wheel set	2 tyres - Does not meet the leasing specifications - No deduction
3	Wheel / tyres	Alloy rim - rear left side - Scratch(es) - No deduction
4	Wheel / tyres	Alloy rim - rear right side - Scratch(es) - No deduction
5	Side panel - rear left side	Side panel - dent(s) - No deduction
6	Side panel - rear right side	Side panel - dent(s) - No deduction
7	Door - front left side	Door edge - Scratch(es) - No deduction

The vehicle shows signs of wear commensurate with its age and use.



## Previous damages

No.	Previous damage	Extent of damage (Net)
1	Rear, Provided by user / customer, from 29 Apr 2025	2.115,38 €

## Order/Scope of order

The order was placed to prepare a sales report for the vehicle described. This includes the following:

- Description of core relevant information about the vehicle
- Documentation of equipment features  
(Delivery by third-party service providers)
- Documentation of damage, defects, missing parts
- Documentation of previous damage, unrepaired previous damage, repainting
- a brief visual or functional inspection of the equipment details if possible.  
(Functional tests of driver assistance systems are not included in the scope of services!)
- a photo documentation of the vehicle

## Basis for the order

This product is based on the Alphabet Fuhrpark GmbH guidelines for vehicle returns and valuations. The expert makes the explicit findings in each individual case objectively within the framework of the specified standards based on his or her own expertise.

The vehicle inspection takes place in a disassembled state.

Damage or defects that can only be detected during disassembly/diagnosis work or through advanced knowledge remain within the scope of the prognosis risk. An extended risk exists for concealed defects caused by fraudulent deception and not identifiable by the expert.

Damage or defects resulting from normal use or wear and tear of the vehicle will be accepted according to the applicable standard.

There was no explicit identification or monetary consideration of the expected features within the product.

Features which in their nature and severity slightly exceed normal use but do not constitute unacceptable damage will be documented and identified under signs of use if necessary.

Damage or defects which, according to the underlying standard, can no longer be attributed to normal use or wear and tear are listed in the product under "Depreciating Factors".

Depending on the product specification, a monetary ID can be provided. If this takes place, the costs can be 100% d or pro rata depending on the vehicle's age and mileage.

## Previous damages

According to available information previous damages were repaired at the vehicle. Traces of repairs, which allow conclusions about the area of repair, were not recognizable during the inspection.

## Comments

- Winterradsatz ist kein Bestandteil des Auslieferungsumfangs





**Figure 1:** Diagonal front (left)



**Figure 2:** Diagonal front (right)



**Figure 3:** Diagonal rear (left)



**Figure 4:** Diagonal rear (right)



**Figure 5:** Interior - front



**Figure 6:** Interior - rear





Figure 7: Instrument cluster



Figure 8: Instrument panel

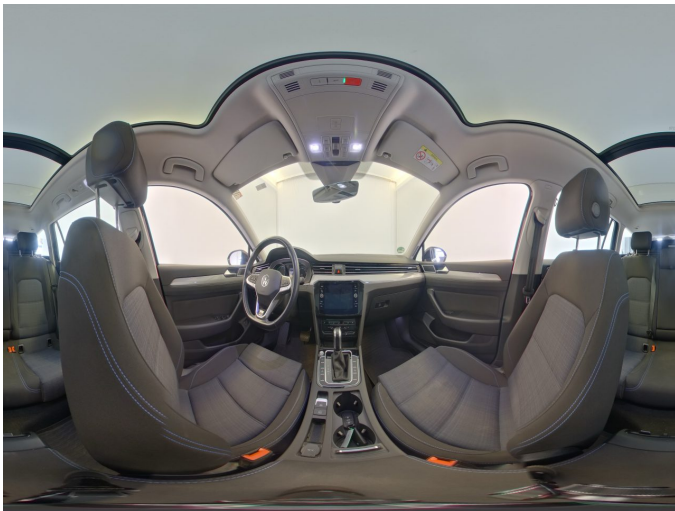


Figure 9: Interior 360° view



Figure 10: Cargo area

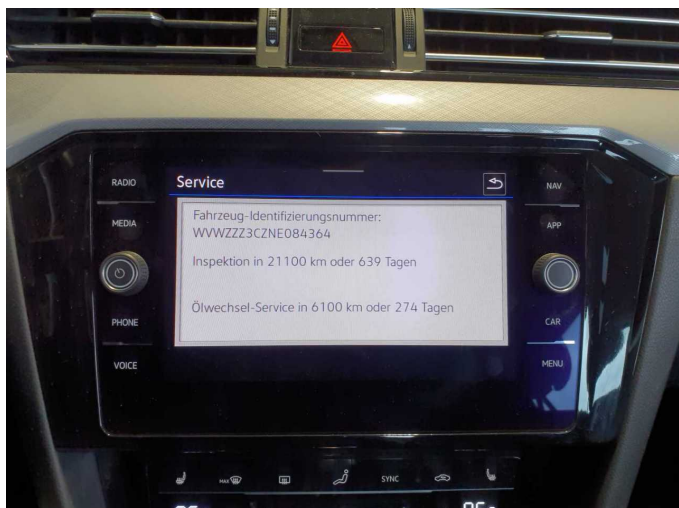


Figure 11: VIN

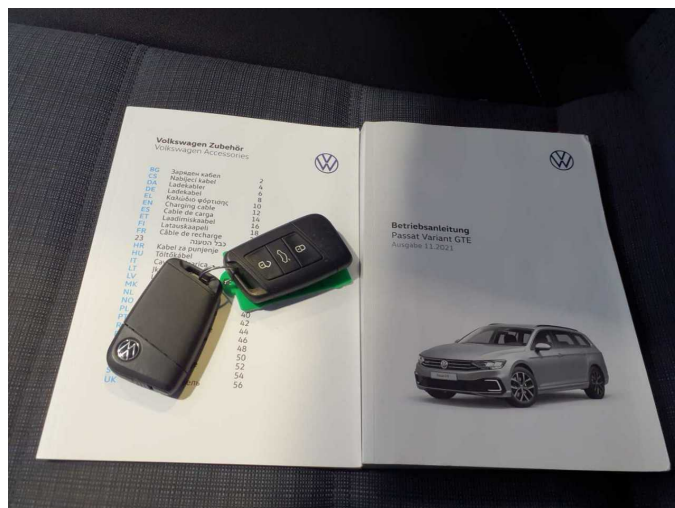


Figure 12: Mounted tyres





**Figure 13: Documents**



### Figure 14: Documents



**Figure 15: Additional tyres**



### Figure 16: Navigation



Figure 17: Misc.



**Figure 18: Misc.**





Figure 19: Misc.



Figure 20: Misc.



Figure 21: Misc.



Figure 22: Misc.



Figure 23: Misc.

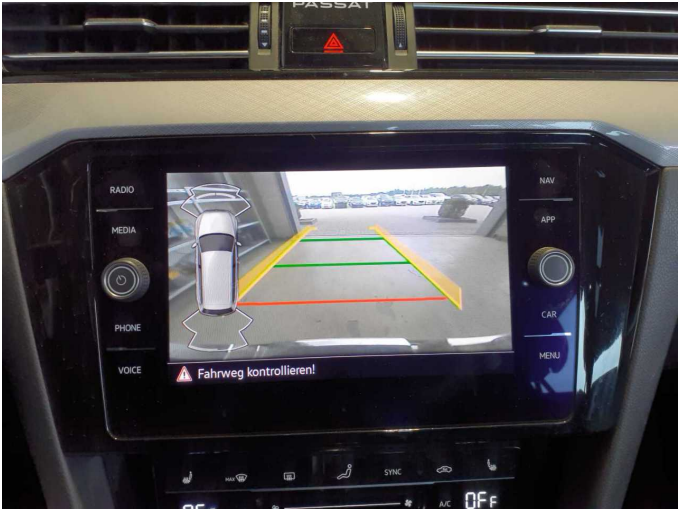


Figure 24: Misc.





Figure 25: Misc.



Figure 26: Misc.



Figure 27: Misc.



Figure 28: Misc.



Figure 29: Misc.



Figure 30: Misc.

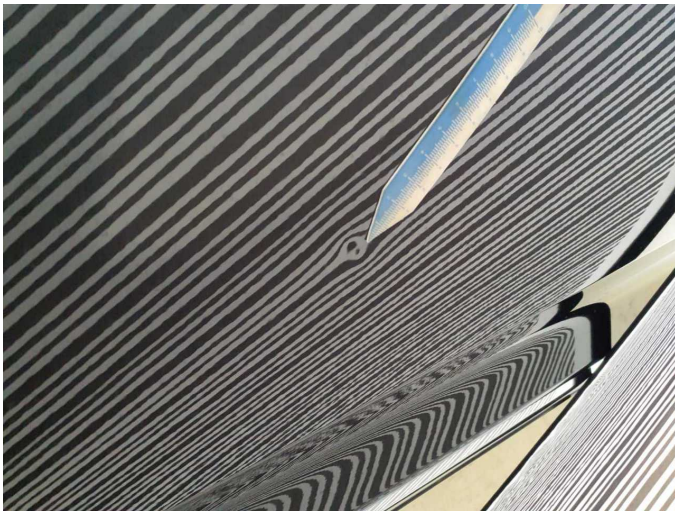




**Damage 1:** Trim / covers: Trim / covers - Damaged - Replace



**Damage 2:** Door - rear left side: Door - dent(s) - Smart repair



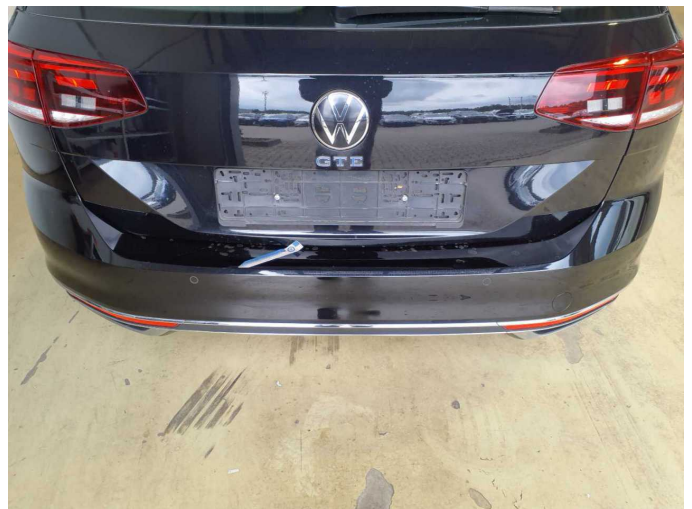
**Damage 2:** Door - rear left side: Door - dent(s) - Smart repair



**Damage 3:** Door - front right side: Door - dent(s) - Smart repair



**Damage 3:** Door - front right side: Door - dent(s) - Smart repair



**Damage 4:** Rear bumper: Rear bumper - Scratch(es) - Smart repair





**Damage 4:** Rear bumper: Rear bumper - Scratch(es) - Smart repair



**Damage 4:** Rear bumper: Rear bumper - Scratch(es) - Smart repair



**Damage 5:** Sill - right side: Sill - Scratch(es) - Smart repair



**Damage 5:** Sill - right side: Sill - Scratch(es) - Smart repair



**Damage 6:** Wheel / tyres: Alloy rim - front right side - Scratch(es) - Loss in value



**Damage 6:** Wheel / tyres: Alloy rim - front right side - Scratch(es) - Loss in value





**Damage 7:** Door - rear right side: Door - Scratch(es) - Paint



**Damage 7:** Door - rear right side: Door - Scratch(es) - Paint



**Damage 8:** Front bumper: Front bumper - Scratch(es) - Paint



**Damage 8:** Front bumper: Front bumper - Scratch(es) - Paint



**Damage 8:** Front bumper: Front bumper - Scratch(es) - Paint



**Damage 8:** Front bumper: Front bumper - Scratch(es) - Paint

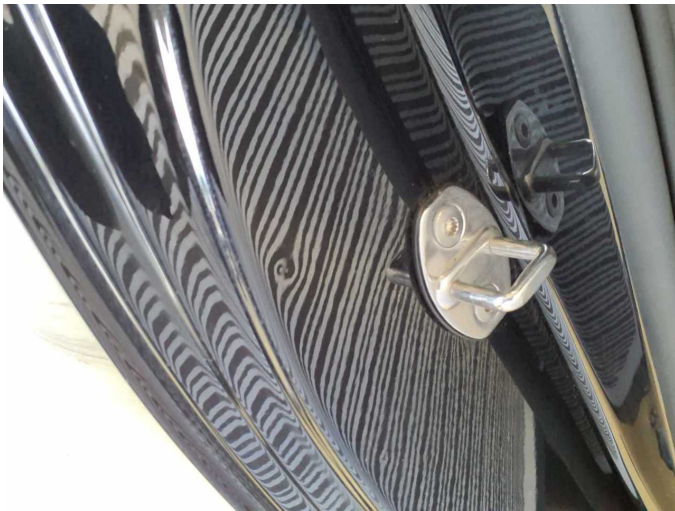




**Damage 9:** Side panel - rear right side: Sill - Dent / paintcoat damage - Repair and paint



**Damage 9:** Side panel - rear right side: Sill - Dent / paintcoat damage - Repair and paint



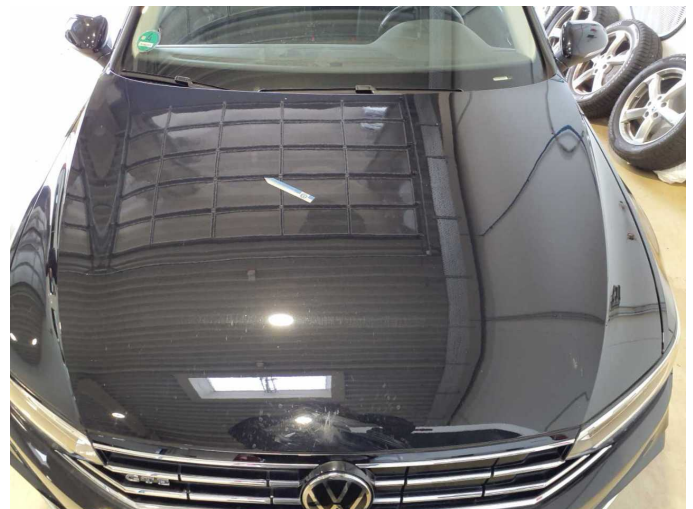
**Damage 9:** Side panel - rear right side: Sill - Dent / paintcoat damage - Repair and paint



**Damage 9:** Side panel - rear right side: Sill - Dent / paintcoat damage - Repair and paint

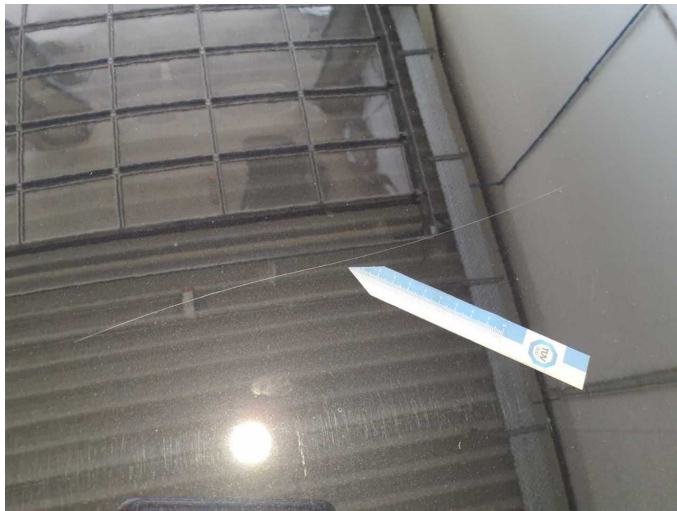


**Damage 9:** Side panel - rear right side: Sill - Dent / paintcoat damage - Repair and paint



**Damage 10:** Bonnet: Bonnet - Scratch(es) - Paint





**Damage 10:** Bonnet: Bonnet - Scratch(es) - Paint



**Wear and tear 1:** Trim / covers: Boot lid - interior trim - Scratch(es) - No deduction



**Wear and tear 1:** Trim / covers: Boot lid - interior trim - Scratch(es) - No deduction



**Wear and tear 1:** Trim / covers: Boot lid - interior trim - Scratch(es) - No deduction



**Wear and tear 2:** 2nd wheel set: 2 tyres - Does not meet the leasing specifications - No deduction



**Wear and tear 2:** 2nd wheel set: 2 tyres - Does not meet the leasing specifications - No deduction





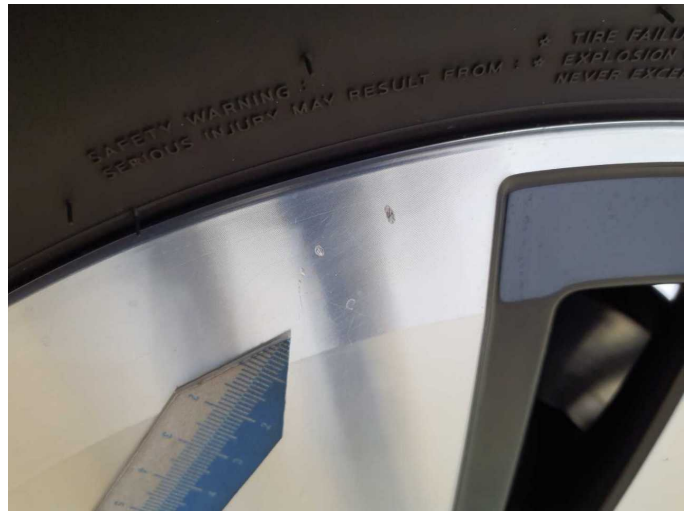
**Wear and tear 2:** 2nd wheel set: 2 tyres - Does not meet the leasing specifications - No deduction



**Wear and tear 2:** 2nd wheel set: 2 tyres - Does not meet the leasing specifications - No deduction



**Wear and tear 3:** Wheel / tyres: Alloy rim - rear left side - Scratch(es) - No deduction



**Wear and tear 3:** Wheel / tyres: Alloy rim - rear left side - Scratch(es) - No deduction



**Wear and tear 4:** Wheel / tyres: Alloy rim - rear right side - Scratch(es) - No deduction



**Wear and tear 4:** Wheel / tyres: Alloy rim - rear right side - Scratch(es) - No deduction

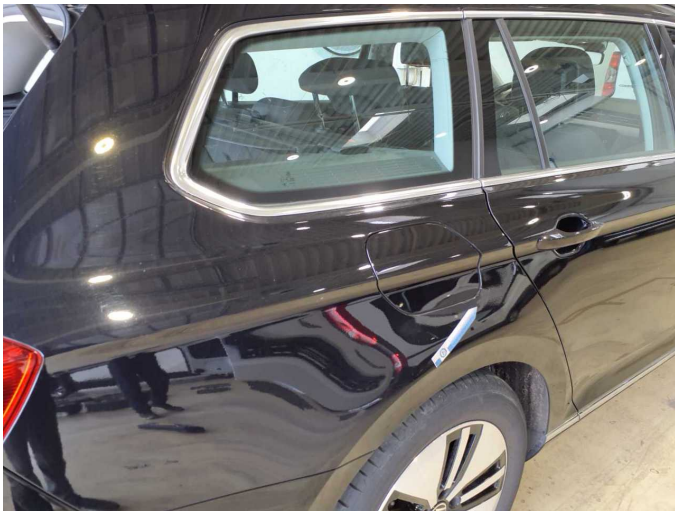




**Wear and tear 5:** Side panel - rear left side: Side panel - dent(s) - No deduction



**Wear and tear 5:** Side panel - rear left side: Side panel - dent(s) - No deduction



**Wear and tear 6:** Side panel - rear right side: Side panel - dent(s) - No deduction



**Wear and tear 6:** Side panel - rear right side: Side panel - dent(s) - No deduction



**Wear and tear 7:** Door - front left side: Door edge - Scratch(es) - No deduction



**Wear and tear 7:** Door - front left side: Door edge - Scratch(es) - No deduction





**Wear and tear 7:** Door - front left side: Door edge - Scratch(es) - No deduction



# Wartungshistorie

(gemäß Auftraggeber Informationen)

Fahrgestellnummer: WVWZZZ3CZNE084364

Hersteller / Modell: VOLKSWAGEN VW Passat Variant 1.4 TSI Plug-In-Hybrid DSG  
GTE

Datum	KM-Stand	Beschreibung
05.08.2025	73.108	AU
11.06.2025	68.312	Getriebeöl ern/prüfen; Motoröl b. Wartung; Ölfilter ern; Regelwartungsdienst; Wartung Sonstiges; Zündkerzen ern
18.10.2024	51.812	Bremsflüssigkeit; Bremsflüssigkeit ern; Motoröl b. Wartung; Ölfilter ern; Ölwechsel; Wartung Sonstiges
17.01.2024	32.109	Motoröl b. Wartung; Ölfilter ern; Regelwartungsdienst; Wartung Sonstiges
10.05.2023	17.322	Motoröl b. Wartung; Ölwechsel