



Expertise

Protocol number: 41229765
Order No. / Reference: 25096609
Inspection date: 26 Aug 2025

Manufacturer: Volkswagen	Model: Passat Variant 2.0 TDI SCR DSG Business
VIN: WVGZZZ3CZNE080929	



Vehicle details	
Manufacturer / Type / Model / Equipment	
Volkswagen Passat Variant 2.0 TDI SCR DSG Business	
Vehicle Identification number	WVGZZZ3CZNE080929
Mileage (Read)	155,298 km
First registration	4 Jul 2022
Number of holders	1
Power / Engine displacement	110 kw / 1,968 ccm
Fuel type / Cylinder	Diesel / 4
Gearbox / Number of gears	Automatic / 7
Type of drive	Front drive
Type of vehicle	Station wagon
Colour / colour code	Mangangrau Metallic (B7R)
Doors / Seats	5 / 5
Upholstery type	Cloth
Colour of upholstery	Black-Grey



Vehicle details

Maintenance booklet / proof	digital proof / complete	Next maintenance in	17,300 km
Last maintenance on / at	07/2025 at 155,060 km		
Key is / should be	2 / 2	FZG documents	ZB#2 (B) was available (copy), ZB#1 (S) was not available
		Letter No.	GJ249425
Previous damage / Accident	None detectable	Repainting	None detectable
Inspection conditions	sufficient	Lifting equipment / pit	yes
Test drive	Not performed	Engine function test	Performed
Manufacturer key number/ type code number	0603 / BQS 02887		
Emission standard	EURO6;WLTP;AP;PI/CI; M, N1 I	Fine dust sticker	
Permitted total weight	2,200 kg	Empty weight	

Tyres

Mounted tyres

#	Tyre size	Type of tyre	Manufacturer	Tread depth
1)	215/60 R16 95V	Summer tyres on Light alloy	Dunlop	7mm / 7mm
2)	215/60 R16 95V	Summer tyres on Light alloy	Continental	5mm / 5mm

Additional tyres

#	Tyre size	Type of tyre	Manufacturer	Tread depth
1)	215/60 R16 95H	Winter tyres on Steel rim with wheel cover	Dunlop	5mm / 5mm
2)	215/60 R16 95H	Winter tyres on Steel rim with wheel cover	Dunlop	5mm / 5mm

Replacement

Typ	Tyre size	Type of tyre	Manufacturer	Tread depth
	Tirefit	Expiration date 04/2026		

Legend: Tread depth information for tires on the left is in the first place, for tires on the right is in the second place on the axle in the direction of travel

Equipment

Standard equipment

- | | |
|---|---|
| <ul style="list-style-type: none"> • Airbag for driver and front passenger • Anti-lock braking system (ABS) • Automatic distance control ACC "stop & go", including speed limiter • Cup holders (2) front • Brake light, third • Headlining in Mistral Grey • diesel particulate filter • Parking aid - warning signals for obstacles in the front and rear areas • Electronic stabilization program and electromechanical brake booster • Front windscreen in laminated safety glass, heat and sound insulating • Transmission: 7-speed DSG • ISOFIX anchorage points • Headrests (3) rear • LED fog lights and cornering lights • LED headlights with daytime running lights • Headlight range adjustment • Front center armrest height and length adjustable, with storage box • Mesh partition • Emergency braking assistant "Front Assist" (for automatic distance control ACC up to 210 km/h) • Upholstery: "Business" fabric • Radio "Composition" • Radio accessories: Digital radio reception DAB+ • Wheels: 4 light alloy wheels "Sepang" 6.5 J x 16 • Rear seat bench undivided, backrest asymmetrically divided and foldable, with center armrest • Power steering • Seats: Comfort seats in the front • Seats: Front seats height adjustable • Start-stop system • Telephone interface • First aid kit, warning triangle and safety vest • Electronic immobilizer | <ul style="list-style-type: none"> • Airbag, head airbag system for front and rear passengers • App Connect • Exterior mirrors electrically adjustable, heated, ambient lighting • Hill start assist • Chrome strips on the side windows • Roof rails black • tachometer • LED entry/warning lights in the front doors • Electronic parking brake including auto-hold function • Automatic headlight switching • Remote release for the trunk lid • Pedestrian detection • Luggage compartment floor can be raised • Interior lights with switch-off delay and dimming function • Air conditioning • Front headrests • LED taillights • Steering wheel: Multifunction steering wheel in leather, with shift paddles • Multifunction display "Premium" with multi-color display • Fatigue detection • Non-smoking version • Emergency call service • Package: Light and Vision Package "Plus" • Proactive occupant protection system in conjunction with "Front Assist" • Tire pressure monitoring indicator (passive) • Wheels: Tire Mobility Set • Leather gearshift knob • Keyless start system without safe lock • Seat belts: three-point automatic seat belt • Seats: Lumbar supports in front • Lane keeping assistant "Lane Assist" • 12V socket on the rear center console • Textile floor mats • Warning sound and light for unfastened seat belts at the front and rear |
|---|---|

Extra equipment

- | | |
|---|--|
| <ul style="list-style-type: none"> • App-Connect Wireless (Volkswagen offers three interfaces for connecting smartphones with numerous options: - Apple CarPlay - Android Auto from Google - MirrorLink) • Chassis: Rear suspension with fully automatic level control • Tailgate with electric opening and closing, electric opening for luggage compartment cover (extendable and removable luggage compartment cover, with electric opening - tailgate with electric opening and closing) | <ul style="list-style-type: none"> • Exterior mirrors with ambient lighting and passenger mirror lowering (folding and heated - dimming on driver's side) • Removable luggage compartment protective mat (back of the rear seat backrest with black rubber covering) • Paint finish: metallic |
|---|--|



- Package: "Business Premium" package including navigation (from Business) (2 USB-C ports in the front, USB-C charging socket in the rear, 230V socket App-Connect including wireless, Apple CarPlay, Android Auto, "Travel Assist" driving assistant and "Lane Assist" lane keeping assistant, Air Care Climatronic with 3-zone temperature control, active combo filter and rear controls, electric lumbar support on the driver's side, massage function on the driver's side, "Rear View" reversing camera, heated windshield washer nozzles, Comfort telephone interface, inductive charging function, heated front seats)
- Rear side windows and rear window tinted
- Seats: Lumbar supports front, driver's side electric including massage function
- Auxiliary heating and ventilation (with radio remote control and timer)
- "Discover Media" navigation system including "Streaming & Internet" (4x20 watt user interface with proximity sensor, dual tuner with phase diversity, vehicle menu speed, volume adjustment, 2D map display, tone control, triple TFT display with touchscreen operation, "Discover Media" navigation system including "Streaming & Internet," MP3 radio, telephone contact address for navigation, telephone interface, 2 USB ports also for iPod/iPhone, traffic sign recognition, "VW Media Control," We Connect Plus, 3 years, including We Connect route guidance, dynamic RDS TMC tuner)
- Proactive occupant protection system and lane change assistant "Side Assist" (Proactive occupant protection system in conjunction with "Front Assist" and "Side Assist" - lane change assistant "Side Assist" and rear traffic assistant)
- Voice control
- "Comfort" telephone interface with inductive charging function (hands-free system)

Brief expert findings

Documents submitted	At the time of the inspection, the registration certificate Part 2 (letter) was available, but the registration certificate Part 1 (certificate) was not. (Copy)
VIN comparison	The vehicle identification number (VIN) was read from the vehicle and its conformity with the submitted documents was verified during the inspection by the undersigned.
Inspection	The inspection conditions were sufficient for the assessment of the vehicle. Lifting equipment and a pit were available for examining the vehicle.
Test drive	No test drive/maneuvering was carried out during the inspection of the vehicle.
Engine function test	An engine test run was performed.

Value reducing factors

No.	Component group	Description
1	Door - front left side	Door edge - Scratch(es) - Smart repair
2	Side panel - rear left side	Side panel - dent(s) - Smooth repair work
3	Side panel - rear right side	Side panel - Scratch(es) - Smart repair
4	Boot lid / rear door	Boot lid - dent(s) - Smooth repair work
5	Bonnet	Bonnet (+ Delle, Beginnende Korrosion) - Stone chips - Paint

Wear and tear

No.	Component group	Description
1	Vehicle glazing	Windscreen with lane departure assistant - Stone chips - No deduction
2	Door - rear left side	Door - Scratch(es) - No deduction

The vehicle shows signs of wear commensurate with its age and use.



Order/Scope of order

The order was placed to prepare a sales report for the vehicle described. This includes the following:

- Description of core relevant information about the vehicle
- Documentation of equipment features
(Delivery by third-party service providers)
- Documentation of damage, defects, missing parts
- Documentation of previous damage, unrepaired previous damage, repainting
- a brief visual or functional inspection of the equipment details if possible.
(Functional tests of driver assistance systems are not included in the scope of services!)
- a photo documentation of the vehicle

Basis for the order

This product is based on the Alphabet Fuhrpark GmbH guidelines for vehicle returns and valuations. The expert makes the explicit findings in each individual case objectively within the framework of the specified standards based on his or her own expertise.

The vehicle inspection takes place in a disassembled state.

Damage or defects that can only be detected during disassembly/diagnosis work or through advanced knowledge remain within the scope of the prognosis risk. An extended risk exists for concealed defects caused by fraudulent deception and not identifiable by the expert.

Damage or defects resulting from normal use or wear and tear of the vehicle will be accepted according to the applicable standard.

There was no explicit identification or monetary consideration of the expected features within the product.

Features which in their nature and severity slightly exceed normal use but do not constitute unacceptable damage will be documented and identified under signs of use if necessary.

Damage or defects which, according to the underlying standard, can no longer be attributed to normal use or wear and tear are listed in the product under "Depreciating Factors".

Depending on the product specification, a monetary ID can be provided. If this takes place, the costs can be 100% d or pro rata depending on the vehicle's age and mileage.

Previous damages

Apparently, no repaired previous damage could be found on the vehicle.

Comments

- Winterradsatz ist kein Bestandteil des Auslieferungsumfangs



Figure 1: Diagonal front (left)



Figure 2: Diagonal front (right)



Figure 3: Diagonal rear (left)



Figure 4: Diagonal rear (right)



Figure 5: Interior - front



Figure 6: Interior - rear



Figure 7: Instrument cluster



Figure 8: Instrument panel



Figure 9: interior 360° view ([Online link](#))



Figure 10: Cargo area

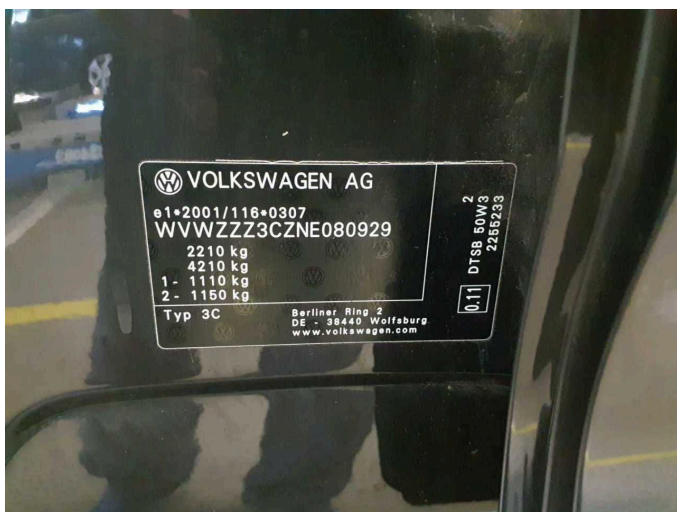


Figure 11: VIN



Figure 12: Mounted tyres

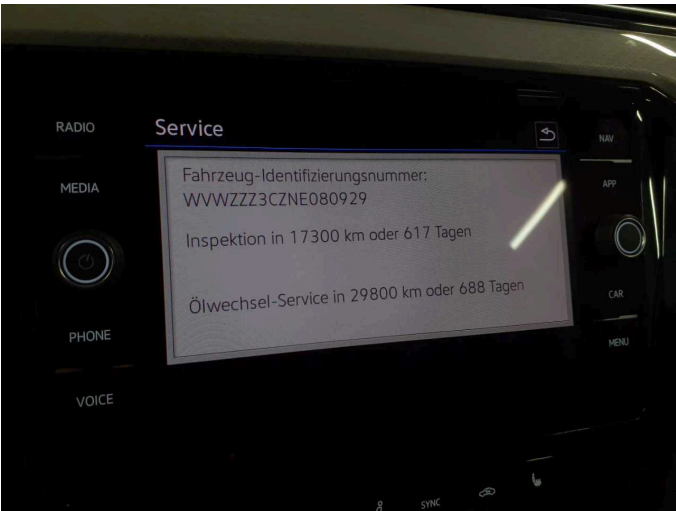


Figure 13: Documents

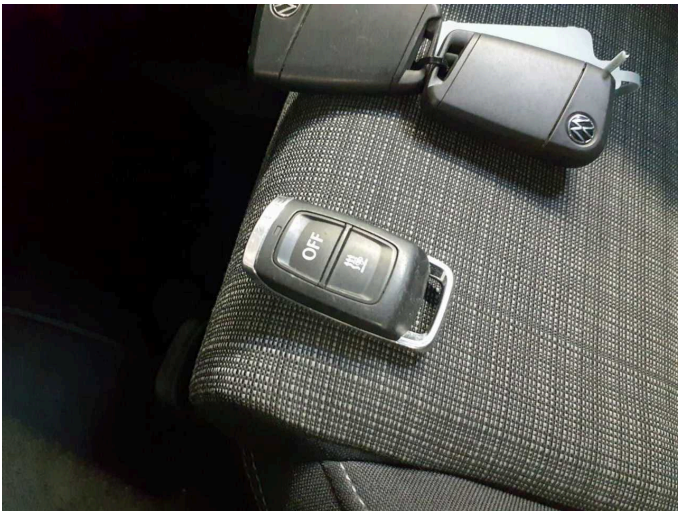


Figure 14: Documents

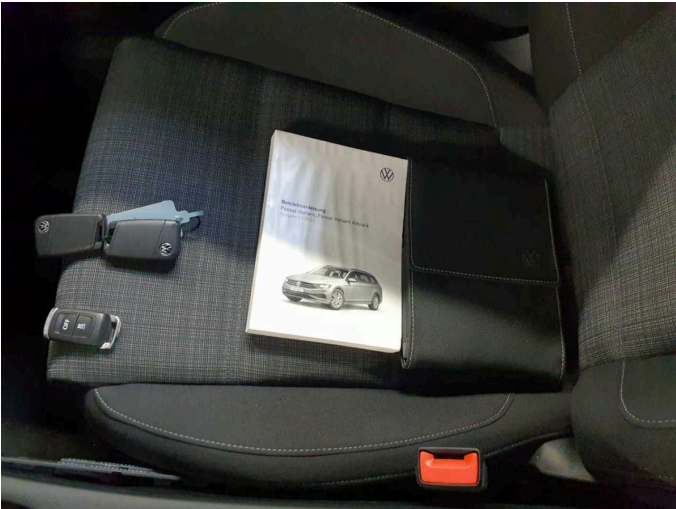


Figure 15: Documents



Figure 16: Additional tyres



Figure 17: Navigation



Figure 18: Misc.



Figure 19: Misc.



Figure 20: Misc.

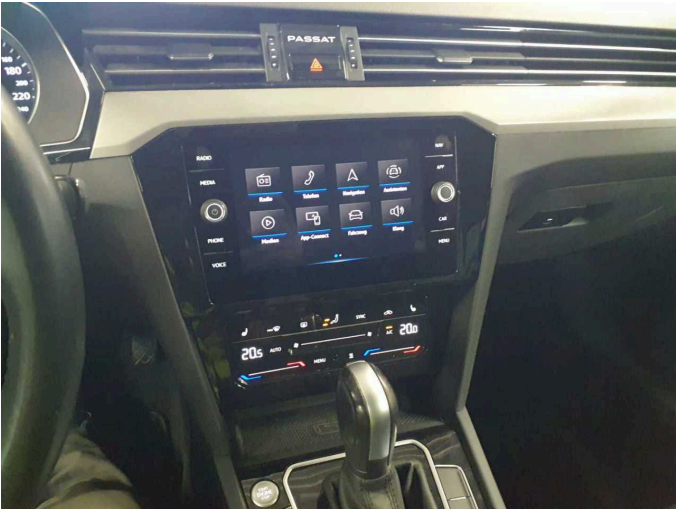


Figure 21: Misc.



Figure 22: Misc.

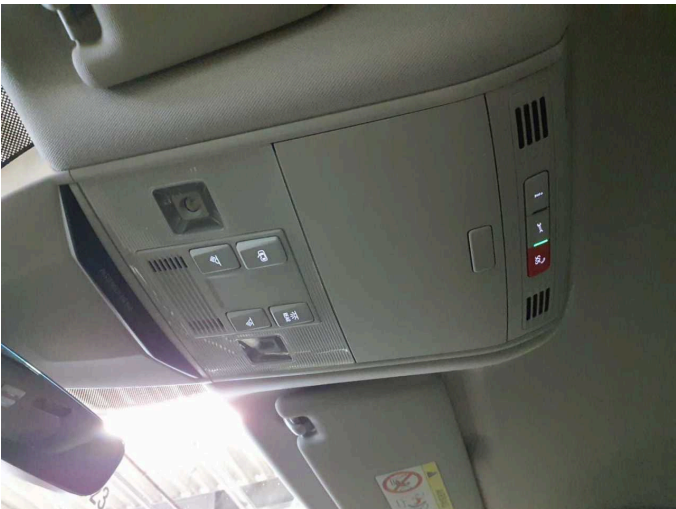


Figure 23: Misc.



Figure 24: Misc.

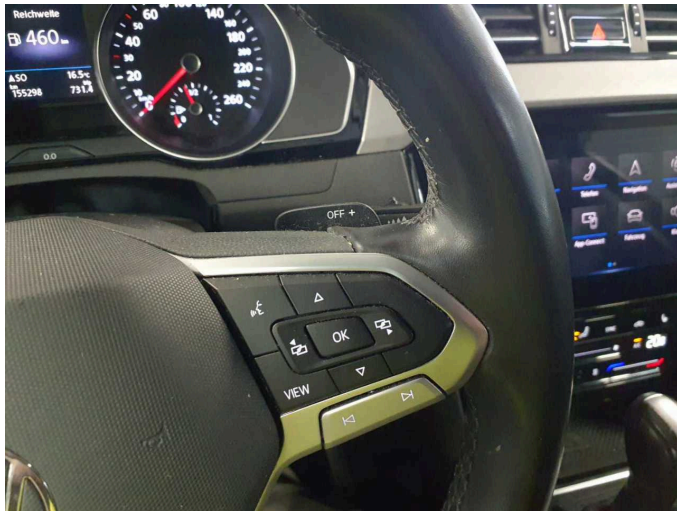


Figure 25: Misc.

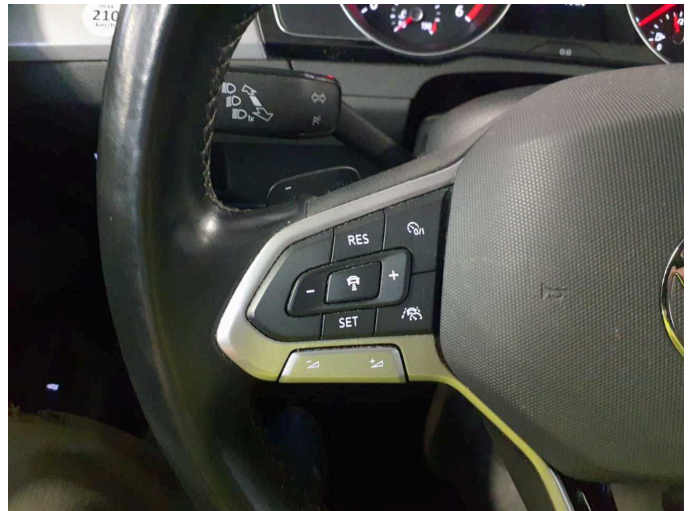


Figure 26: Misc.



Figure 27: Misc.



Figure 28: Misc.



Figure 29: Misc.



Figure 30: Misc.

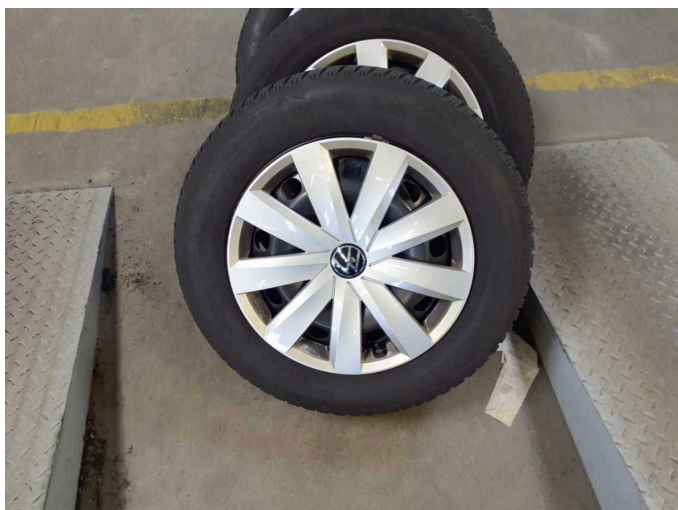


Figure 31: Misc.



Figure 32: Misc.

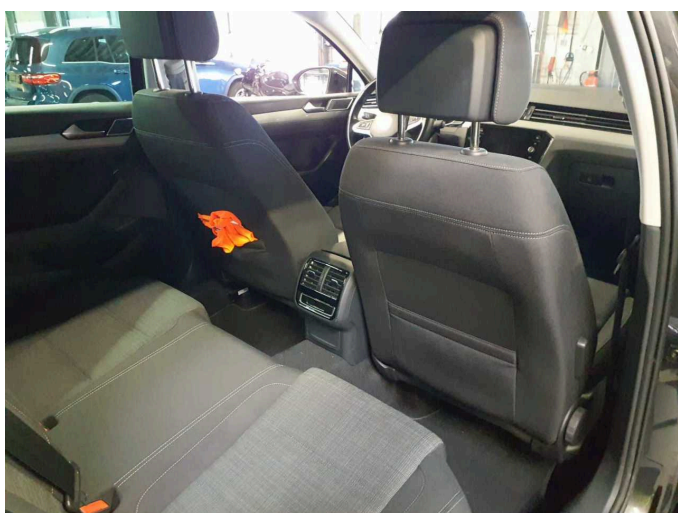


Figure 33: Misc.



Damage 1: Door - front left side: Door edge - Scratch(es) - Smart repair



Damage 1: Door - front left side: Door edge - Scratch(es) - Smart repair



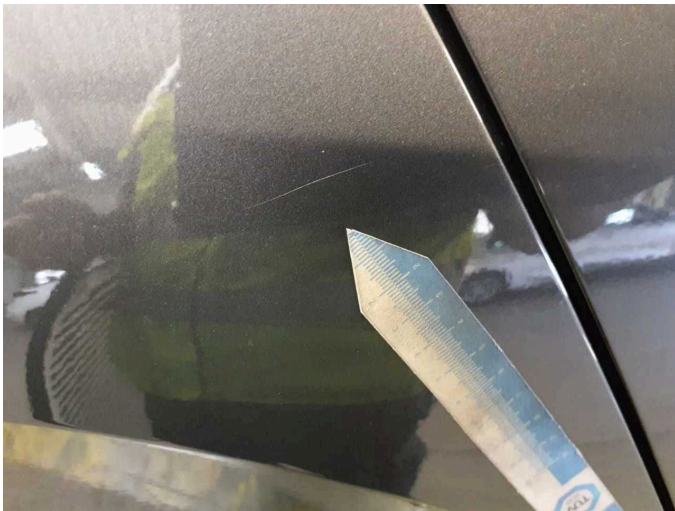
Damage 2: Side panel - rear left side: Side panel - dent(s) - Smooth repair work



Damage 2: Side panel - rear left side: Side panel - dent(s) - Smooth repair work



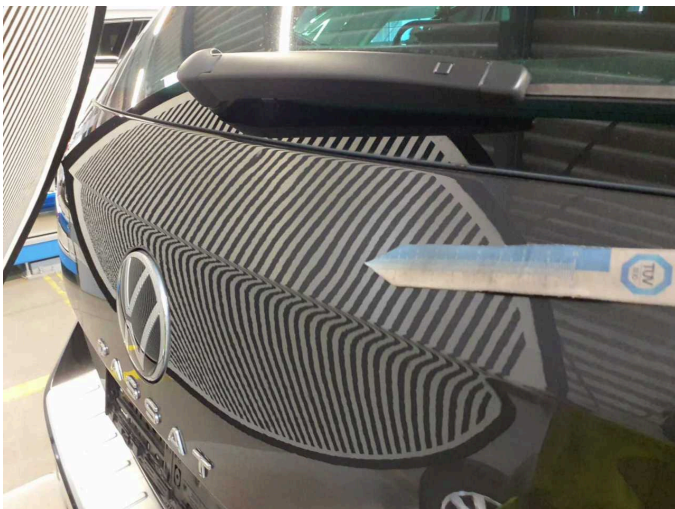
Damage 3: Side panel - rear right side: Side panel - Scratch(es) - Smart repair



Damage 3: Side panel - rear right side: Side panel - Scratch(es) - Smart repair



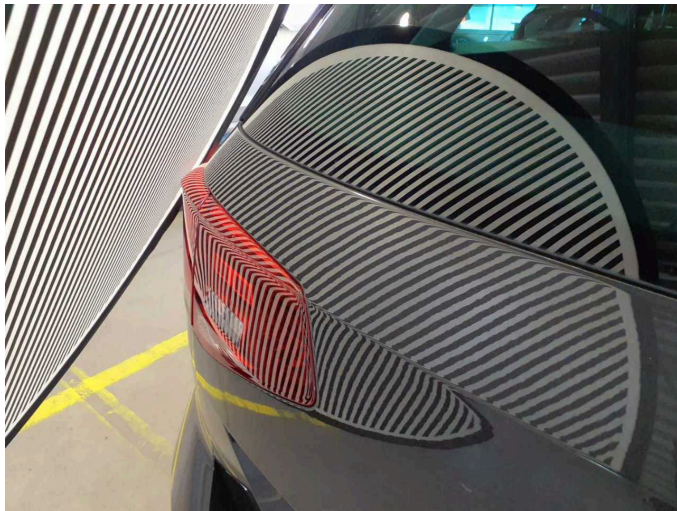
Damage 4: Boot lid / rear door: Boot lid - dent(s) - Smooth repair work



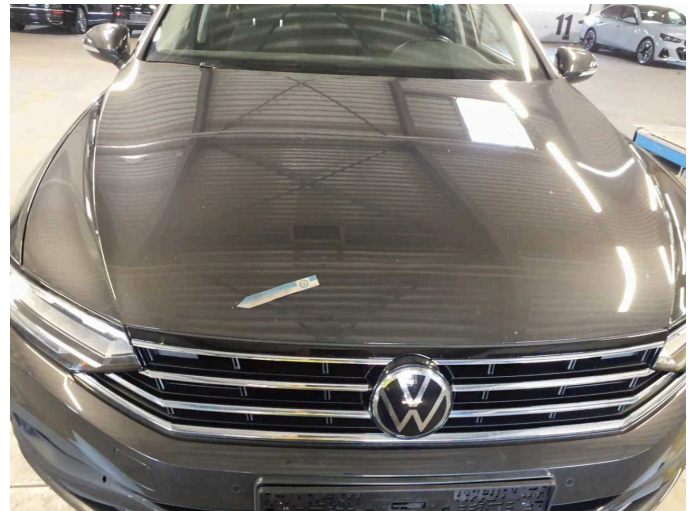
Damage 4: Boot lid / rear door: Boot lid - dent(s) - Smooth repair work



Damage 4: Boot lid / rear door: Boot lid - dent(s) - Smooth repair work



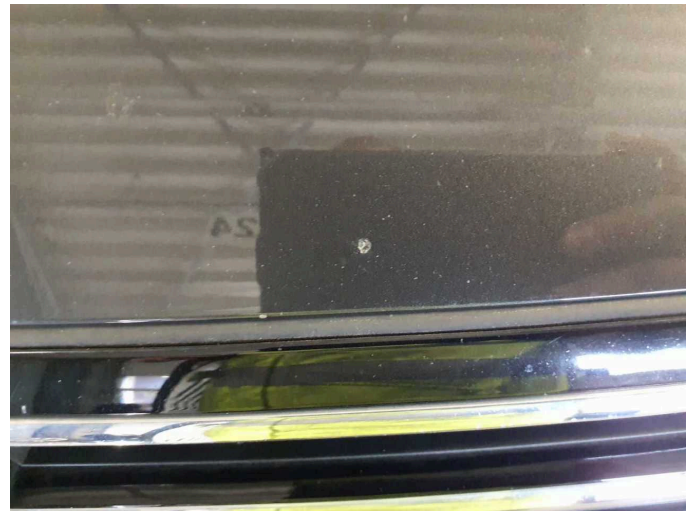
Damage 4: Boot lid / rear door: Boot lid - dent(s) - Smooth repair work



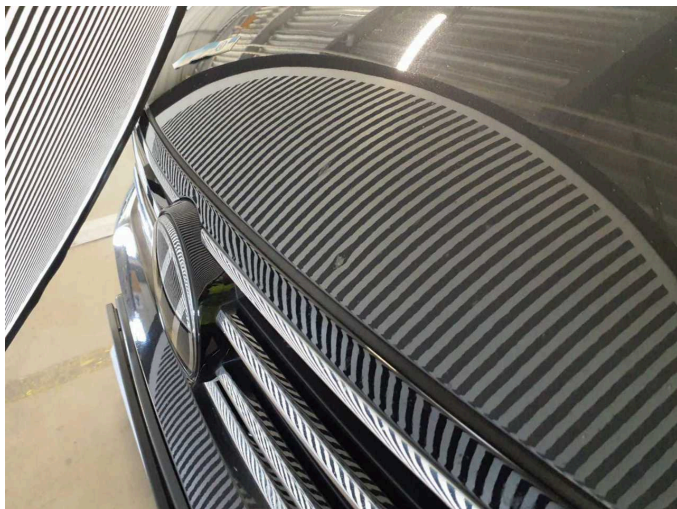
Damage 5: Bonnet: Bonnet (+ Delle, Beginnende Korrosion) - Stone chips - Paint



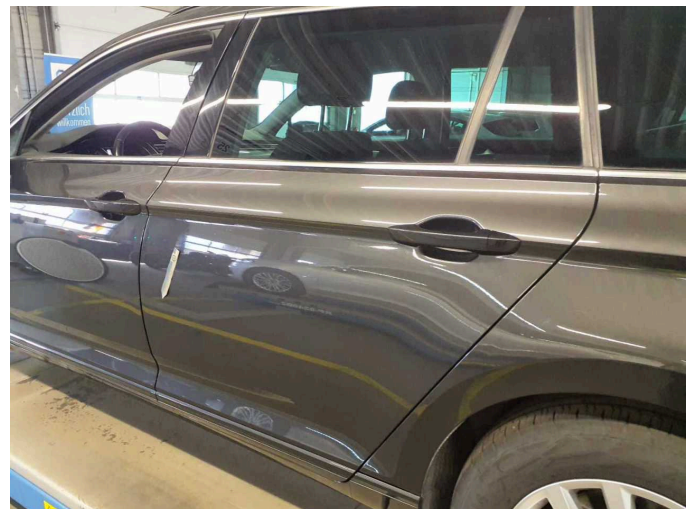
Damage 5: Bonnet: Bonnet (+ Delle, Beginnende Korrosion) - Stone chips - Paint



Damage 5: Bonnet: Bonnet (+ Delle, Beginnende Korrosion) - Stone chips - Paint



Damage 5: Bonnet: Bonnet (+ Delle, Beginnende Korrosion) - Stone chips - Paint



Wear and tear 2: Door - rear left side: Door - Scratch(es) - No deduction



Wear and tear 2: Door - rear left side: Door - Scratch(es) - No deduction



Wartungshistorie

(gemäß Auftraggeber Informationen)

Fahrgestellnummer: WVVZZZ3CZNE080929

Hersteller / Modell: VOLKSWAGEN VW Passat Variant 2.0 TDI SCR DSG Business

Datum	KM-Stand	Beschreibung
15.07.2025	155.060	AU; Bremse Sonstiges; Bremsscheiben vorne; Motoröl b. Wartung; Ölfilter ern; Ölwechsel; Reparatur Sonstiges; Systemtest/Eigendiagnose; Wartung Sonstiges
05.05.2025	142.598	Bremse Sonstiges; Bremsklötze hinten; Bremsklötze vorne; Bremsscheiben vorne; Regelwartungsdienst; Systemtest/Eigendiagnose; Wartung Sonstiges
27.01.2025	127.874	Motoröl b. Wartung; Ölfilter ern; Ölwechsel; Wartung Sonstiges
16.10.2024	113.730	Bremse Sonstiges; Bremsklötze hinten; Bremsscheiben hinten; Getriebeöl ern/prüfen; Motoröl b. Wartung; Ölfilter ern; Regelwartungsdienst; Systemtest/Eigendiagnose; Wartung Sonstiges
09.04.2024	87.043	Bremse Sonstiges; Bremsflüssigkeit; Bremsflüssigkeit ern; Bremsklötze vorne; Bremsscheiben vorne; Kraftstofffilter ern; Luftfiltereinsatz ern; Motoröl b. Wartung; Ölfilter ern; Regelwartungsdienst; Systemtest/Eigendiagnose; Wartung Sonstiges
15.08.2023	57.310	AU; Bremse Sonstiges; Bremsklötze hinten; Bremsscheiben hinten; Ölfilter ern; Regelwartungsdienst; Systemtest/Eigendiagnose; Wartung Sonstiges
13.02.2023	29.222	Motoröl b. Wartung; Regelwartungsdienst