



Expertise

Protocol number: 41425161  
Order No. / Reference: 25197836  
Inspection date: 8 Sept 2025

Manufacturer: Volkswagen	Model: Passat Variant 2.0 TDI SCR DSG Business
VIN: WVVZZZ3CZNE077842	



Vehicle details	
Manufacturer / Type / Model / Equipment	
Volkswagen Passat Variant 2.0 TDI SCR DSG Business	
Vehicle Identification number	WVVZZZ3CZNE077842
Mileage (Read)	148,835 km
First registration	1 Sept 2022
Number of holders	1
Next periodical technical inspection	09/2025
(Report not on hand)	
Power / Engine displacement	147 kw / 1,968 ccm
Fuel type / Cylinder	Diesel / 4
Gearbox / Number of gears	Automatic / 7
Type of drive	Front drive
Type of vehicle	Station wagon
Colour / colour code	Mondsteingrau
Doors / Seats	5 / 5
Upholstery type	Cloth
Colour of upholstery	Black-Anthracite
Re/Import	no
Vehicle with smoke odor	no
Driving readiness	Roadworthy



## Vehicle details

<b>Maintenance booklet / proof</b>	digital proof / complete	<b>Next maintenance in</b>	1,400 km
<b>Last maintenance on / at</b>	04/2025 at 120,161 km		
<b>Key is / should be</b>	2 / 2	<b>FZG documents</b>	ZB#2 (B) was available (copy), ZB#1 (S) was not available
		<b>Letter No.</b>	GJ227099
<b>Previous damage / Accident</b>	None detectable	<b>Repainting</b>	None detectable
<b>Inspection conditions</b>	sufficient	<b>Lifting equipment / pit</b>	yes
<b>Test drive</b>	short drive on the company premises	<b>Engine function test</b>	Performed
<b>Driving readiness</b>	Roadworthy		
<b>Manufacturer key number/ type code number</b>	0603 / CON 00779		
<b>Emission standard</b>	EURO6;WLTP;AP;PI/CI; M, N1 I	<b>Fine dust sticker</b>	
<b>Permitted total weight</b>	2,180 kg	<b>Empty weight</b>	

## Tyres

### Mounted tyres

#	Tyre size	Type of tyre	Manufacturer	Tread depth
1)	235/45 R18 94W	Summer tires (with run-flat tires) on Light alloy	Continental	4mm / 4mm
2)	235/45 R18 94W	Summer tires (with run-flat tires) on Light alloy	Continental	5mm / 5mm

**Legend:** Tread depth information for tires on the left is in the first place, for tires on the right is in the second place on the axle in the direction of travel

## Equipment

### Standard equipment

- Driver and front passenger airbags (passenger airbag deactivation switch)
- Anti-lock braking system (ABS)
- Automatic distance control ACC "stop & go", including speed limiter
- Exterior mirrors electrically adjustable, heated, ambient lighting (automatically dimming on driver's side)
- Brake light, third
- Roof rails black
- tachometer
- LED entry/warning lights in the front doors
- Electronic parking brake including auto-hold function
- Automatic headlight switching (with daytime running lights, "leaving home" function and manual "coming home" function)
- Pedestrian detection
- Luggage compartment floor can be raised
- Interior lights with switch-off delay and dimming function (2 LED reading lights each at the front and rear)
- Air conditioning (with active combination filter)
- Headrests (3) rear
- Paint finish: Uni
- LED fog lights and cornering lights
- LED headlights with daytime running lights
- Headlight range adjustment
- Front center armrest, height and length adjustable, with storage box (2 rear air vents with chrome slats)
- Fatigue detection (detects signs of driver fatigue based on characteristic steering behavior, time of day, and driving duration and issues a visual and acoustic warning)
- Mesh partition
- Non-smoking version (storage compartment and 12 V socket at the front)
- Emergency braking assistant "Front Assist" (for automatic distance control ACC up to 210 km/h)
- Package: Light and Sight Package "Plus" (LED lights in the front footwells, electrically adjustable and heated exterior mirrors, automatically dimming on the driver's side, LED entry/warning lights in the front doors, automatic headlight control with daytime running lights, "leaving home" function, and manual "coming home" function, interior lights with delayed switch-off and dimming function, 2 LED reading lights each at the front and rear, auto-dimming interior mirror, illuminated vanity mirror, retractable sun visors, rain sensor)
- Radio accessories: Digital radio reception DAB+ (reception of digitally broadcast radio stations and traffic information in addition to the analogue station offering - reception depends on the local availability of digital networks - expanded range of radio programs - improved reception performance)
- Airbag, head airbag system for front and rear passengers (including front side airbags)
- App-Connect (Volkswagen offers three interfaces for connecting smartphones with numerous options: - Apple CarPlay - Android Auto from Google - MirrorLink)
- Cup holders (2) front
- Hill start assist
- Chrome strips on the side windows
- diesel particulate filter
- Parking aid - warning signals for obstacles in the front and rear areas
- Electronic stabilization program and electromechanical brake booster
- Remote release for the trunk lid
- Front windscreen in laminated safety glass, heat and sound insulating
- Transmission: 7-speed DSG (7-speed dual-clutch transmission DSG)
- ISOFIX anchor points (for attaching two child seats to the rear seats, including i-Size child seats)
- Front headrests (safety-optimized, length and height adjustable)
- LED taillights
- Steering wheel: Multifunction steering wheel in leather, with shift paddles
- Premium multifunction display with multi-color display (including: - Outside temperature - Average fuel consumption - Average speed - Distance traveled - Driving time - Gear recommendation - Speed warning - Comfort - Current fuel consumption - Range - Service - Time with extended display options, e.g.: - Digital speedometer - Digital oil temperature indicator - Light & visibility - Language - Auxiliary heating - Winter tires)
- Emergency call service (no registration required, service is activated upon delivery)
- Upholstery: "Business" fabric (front seat center panels and outer rear seats in "Weave" fabric)
- Proactive occupant protection system in conjunction with "Front Assist" (detects critical traffic situations with increased accident potential - prepares vehicle occupants and the vehicle for a possible accident by tightening the front seat belts, restraining the driver and front passenger, and closing open windows and the sunroof except for a crack)
- Composition radio (16.5 cm touchscreen, 8 speakers, 4 x 20 watt output, diversity antenna for FM reception, dual tuner, RDS, MP3 playback, USB-C interface, 3-way tone control)
- Tire pressure monitoring indicator (passive)
- Wheels: AirStop tires 215/55 R 17
- Rear seat bench undivided, backrest asymmetrically split and foldable, with center armrest (and through-loading option)



- Leather gearshift knob
- Keyless start system without safe lock
- Power steering (electromechanical, speed-dependent)
- Seats: Comfort seats in the front
- Seats: Lumbar supports in front (driver's side electrically adjustable)
- Lane Assist (warns with corrective steering intervention if the vehicle unintentionally leaves the lane)
- 12-V socket on the rear center console (and in the luggage compartment)
- First aid kit, warning triangle and safety vest
- Electronic immobilizer

### Extra equipment

- Folding trailer hitch (with electric release)
- Exterior mirrors with ambient lighting and passenger mirror lowering (folding and heated - dimming on driver's side)
- Anti-theft alarm system (interior monitoring, backup horn and tow-away protection - illuminated vanity mirror in the sun visors, extendable sun visors)
- Package: "Business Premium" package including navigation (from Business) (2 USB-C ports in the front, USB-C charging socket in the rear, 230V socket App-Connect including wireless, Apple CarPlay, Android Auto, "Travel Assist" driving assistant and "Lane Assist" lane keeping assistant, Air Care Climatronic with 3-zone temperature control, active combo filter and rear controls, electric lumbar support on the driver's side, massage function on the driver's side, "Rear View" reversing camera, heated windshield washer nozzles, Comfort telephone interface, inductive charging function, heated front seats)
- Package: Ambient lighting (ambient lighting, 1-color - entry/warning lights in LED technology in all doors)
- Package: IQ.DRIVE assistance package including IQ.LIGHT in conjunction with the Business Package (Dynamic high beam control "Dyn. Light Assist" - Driving assistant "Travel Assist", lane keeping assistant "Lane Assist" and "Emergency Assist" - LED matrix headlights, LED daytime running lights, cornering lights and dynamic indicators - LED taillights with dynamic indicators - Dynamic headlight range control with dynamic cornering lights - Rear fog lights on both sides, reversing lights on both sides - Park Assist parking assistant including parking aid - Side Assist lane change assistant and rear traffic exit assistant)
- Radio accessories: Harman Kardon sound system (10+1 speakers, 700 watts total power, 16-channel digital amplifier, subwoofer)
- Wheels: Tire Mobility Set no longer available
- Wheels: Tire pressure monitoring system for driving tires (driving tires with sensors for the tire pressure monitoring system)
- Auxiliary heating and ventilation (with radio remote control and timer)
- "Comfort" telephone interface with inductive charging function (hands-free system)

- Seat belts: Three-point automatic seat belt (Seat belt for middle rear seat - Seat belts for outer rear seats - Front seat belts with height adjustment and belt tensioner)
- Seats: Height-adjustable front seats (ergoComfort seat on the driver's side - with electric backrest adjustment)
- Start-stop system (with brake energy recovery)
- Telephone interface
- Textile floor mats (front and rear)
- Warning sound and light for unfastened seat belts at the front and rear

- App-Connect Wireless (Volkswagen offers three interfaces for connecting smartphones with numerous options: - Apple CarPlay - Android Auto from Google - MirrorLink)
- Headlining in titanium black
- Wirelessly heated and infrared-reflecting windscreen
- "Discover Media" navigation system including "Streaming & Internet" (4x20 watt user interface with proximity sensor, dual tuner with phase diversity, vehicle menu speed, volume adjustment, 2D map display, tone control, triple TFT display with touchscreen operation, "Discover Media" navigation system including "Streaming & Internet," MP3 radio, telephone contact address for navigation, telephone interface, 2 USB ports also for iPod/iPhone, traffic sign recognition, "VW Media Control," We Connect Plus, 3 years, including We Connect route guidance, dynamic RDS TMC tuner)
- Package: "Easy Open & Close" package including safe security (extendable and removable luggage compartment cover with electric opening - tailgate with sensor-controlled opening and closing, with remote unlocking - keyless locking and starting system "Keyless Access" with safe security)
- Package: R-Line Sport Package (Progressive steering - tinted rear side windows and rear window, 65% light-absorbing - electronic differential lock XDS - sports suspension, body lowered by approx. 15mm)
- Package: Winter (automatically heated windscreen washer nozzles - heated front seats)
- Proactive occupant protection system and lane change assistant "Side Assist" (Proactive occupant protection system in conjunction with "Front Assist" and "Side Assist" - lane change assistant "Side Assist" and rear traffic assistant)
- Wheels: 4 alloy wheels 8 J x 18 "Liverpool" (AirStop tires 235/45 R 18, rolling resistance optimized - wheel locks with enhanced anti-theft protection - rear disc brakes, brake calipers in blue (only for GTE))



- Keyless access locking and starting system with safe security (automatic locking and starting system where the vehicle key is carried but not in the hand – if you carry the vehicle key with you and approach the vehicle, it is automatically unlocked; the engine is started conveniently using the start button)

## Brief expert findings

Documents submitted	At the time of the inspection, the registration certificate Part 2 (letter) was available, but the registration certificate Part 1 (certificate) was not. (Copy)
VIN comparison	The vehicle identification number (VIN) was read from the vehicle and its conformity with the submitted documents was verified during the inspection by the undersigned.
Inspection	The inspection conditions were sufficient for the assessment of the vehicle. Lifting equipment and a pit were available for examining the vehicle.
Test drive	A short maneuvering and shunting trip was carried out on the company premises.
Engine function test	An engine test run was performed.
Driving readiness	The vehicle was drivable at the time of inspection.

## Value reducing factors

No.	Component group	Description
1	Side panel - rear right side	Sill - dent(s) - Smart repair
2	Side panel - rear right side	Side panel - dent(s) - Smart repair
3	Boot lid / rear door	Boot lid - dent(s) - Smart repair
4	Side panel - rear left side	Sill - dent(s) - Smart repair
5	Sill - right side	Sill - dent(s) - Smart repair
6	Roof	Roof rail - left side - dent(s) - Smart repair
7	Sill - left side	Sill - dent(s) - Smart repair
8	Side panel - rear left side	Side panel (An Kante) - dent(s) - Repair and paint
9	Rear bumper	Rear bumper - Deformed - Repair and paint
10	Wheel / tyres	Alloy rim - front right side (Materialabtrag) - Scratched - Replace
11	Bonnet	Bonnet (+ Harz entfernen) - Dent / paintcoat damage - Repair and paint
12	Vehicle glazing	Windscreen - Stone chips - Replace

## Wear and tear

No.	Component group	Description
1	Wheel / tyres	Alloy rim - front left side - Scratch(es) - No deduction
2	Body	Body - Stone chips

The vehicle shows signs of wear commensurate with its age and use.



## Order/Scope of order

The order was placed to prepare a sales report for the vehicle described. This includes the following:

- Description of core relevant information about the vehicle
- Documentation of equipment features  
*(Delivery by third-party service providers)*
- Documentation of damage, defects, missing parts
- Documentation of previous damage, unrepaired previous damage, repainting
- a brief visual or functional inspection of the equipment details if possible.  
*(Functional tests of driver assistance systems are not included in the scope of services!)*
- a photo documentation of the vehicle

## Basis for the order

This product is based on the Alphabet Fuhrpark GmbH guidelines for vehicle returns and valuations. The expert makes the explicit findings in each individual case objectively within the framework of the specified standards based on his or her own expertise.

The vehicle inspection takes place in a disassembled state.

Damage or defects that can only be detected during disassembly/diagnosis work or through advanced knowledge remain within the scope of the prognosis risk. An extended risk exists for concealed defects caused by fraudulent deception and not identifiable by the expert.

Damage or defects resulting from normal use or wear and tear of the vehicle will be accepted according to the applicable standard.

There was no explicit identification or monetary consideration of the expected features within the product.

Features which in their nature and severity slightly exceed normal use but do not constitute unacceptable damage will be documented and identified under signs of use if necessary.

Damage or defects which, according to the underlying standard, can no longer be attributed to normal use or wear and tear are listed in the product under "Depreciating Factors".

Depending on the product specification, a monetary ID can be provided. If this takes place, the costs can be 100% d or pro rata depending on the vehicle's age and mileage.

## Previous damages

Apparently, no repaired previous damage could be found on the vehicle.





Figure 1: Diagonal front (left)



Figure 2: Diagonal front (right)



Figure 3: Diagonal rear (left)



Figure 4: Diagonal rear (right)



Figure 5: Interior - front



Figure 6: Interior - rear





Figure 7: Instrument cluster



Figure 8: Instrument panel



Figure 9: Interior 360° view



Figure 10: Cargo area



Figure 11: VIN



Figure 12: Mounted tyres





Figure 13: Documents

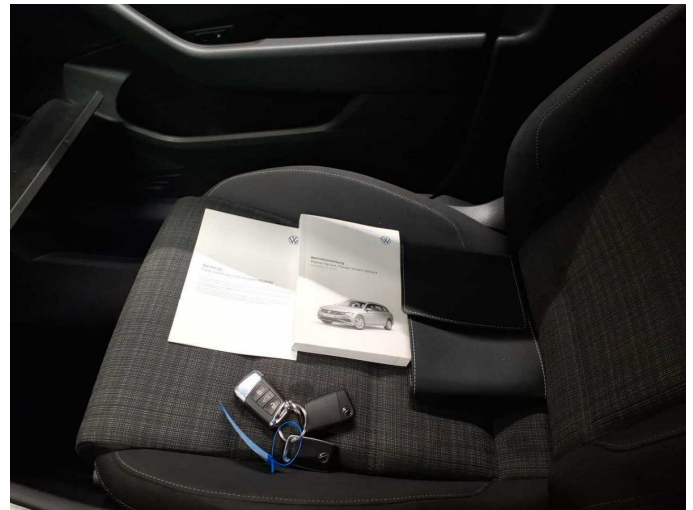


Figure 14: Documents



Figure 15: Documents



Figure 16: Navigation



Figure 17: Misc.



Figure 18: Misc.



Figure 19: Misc.



Figure 20: Misc.



Figure 21: Misc.



Figure 22: Misc.



Figure 23: Misc.



Figure 24: Misc.





Figure 25: Misc.



Figure 26: Misc.



Figure 27: Misc.



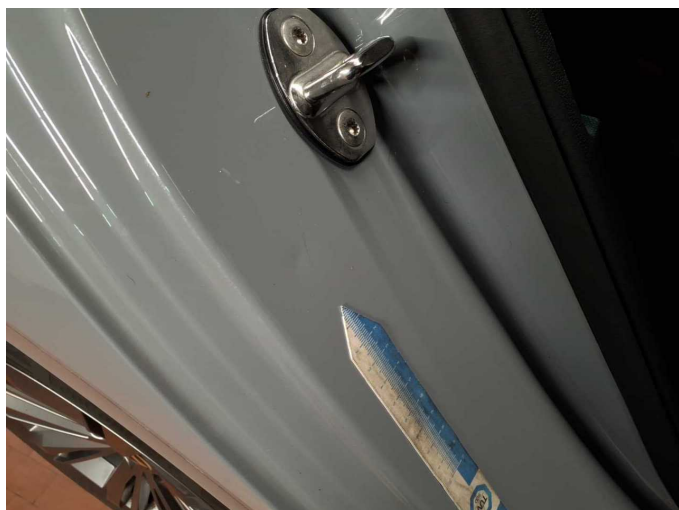
Figure 28: Misc.



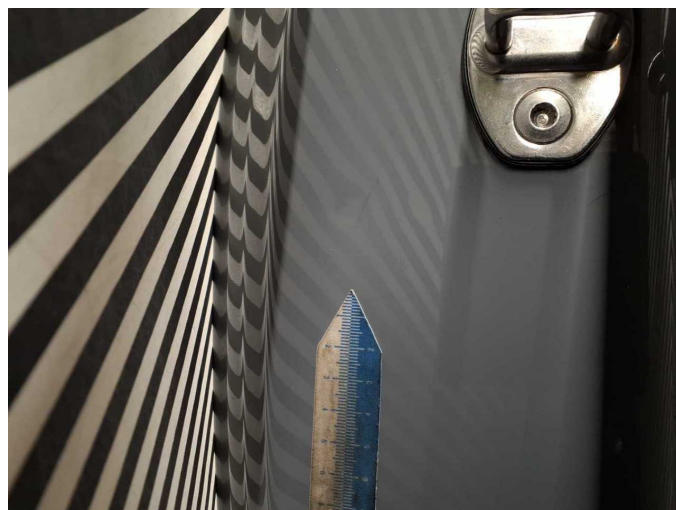
Figure 29: Misc.



Figure 30: Misc.



**Damage 1:** Side panel - rear right side: Sill - dent(s) - Smart repair



**Damage 1:** Side panel - rear right side: Sill - dent(s) - Smart repair



**Damage 1:** Side panel - rear right side: Sill - dent(s) - Smart repair



**Damage 2:** Side panel - rear right side: Side panel - dent(s) - Smart repair



**Damage 2:** Side panel - rear right side: Side panel - dent(s) - Smart repair

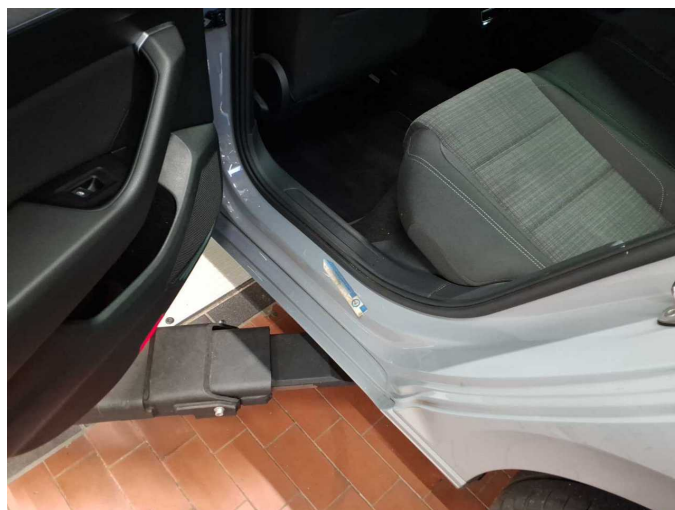


**Damage 3:** Boot lid / rear door: Boot lid - dent(s) - Smart repair





**Damage 3:** Boot lid / rear door: Boot lid - dent(s) - Smart repair



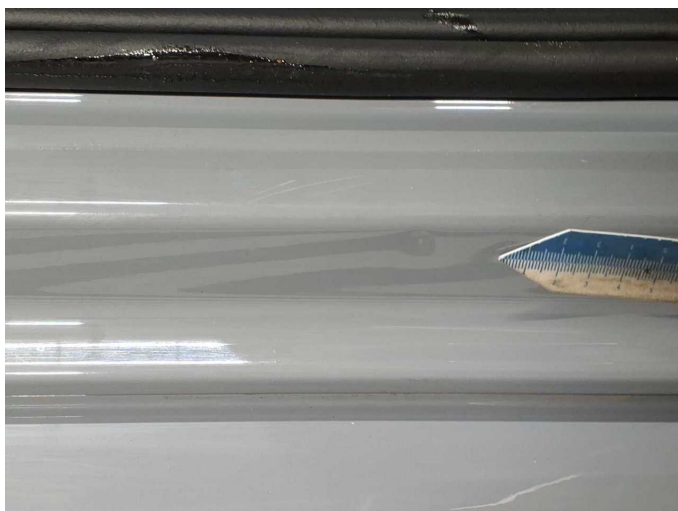
**Damage 4:** Side panel - rear left side: Sill - dent(s) - Smart repair



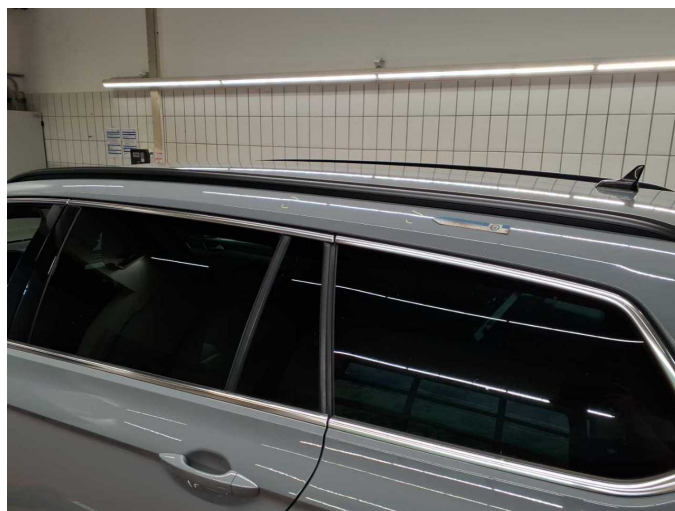
**Damage 4:** Side panel - rear left side: Sill - dent(s) - Smart repair



**Damage 5:** Sill - right side: Sill - dent(s) - Smart repair



**Damage 5:** Sill - right side: Sill - dent(s) - Smart repair



**Damage 6:** Roof: Roof rail - left side - dent(s) - Smart repair





**Damage 6:** Roof: Roof rail - left side - dent(s) - Smart repair



**Damage 7:** Sill - left side: Sill - dent(s) - Smart repair



**Damage 7:** Sill - left side: Sill - dent(s) - Smart repair



**Damage 7:** Sill - left side: Sill - dent(s) - Smart repair



**Damage 8:** Side panel - rear left side: Side panel (An Kante) - dent(s) - Repair and paint



**Damage 8:** Side panel - rear left side: Side panel (An Kante) - dent(s) - Repair and paint





**Damage 9:** Rear bumper: Rear bumper - Deformed - Repair and paint



**Damage 9:** Rear bumper: Rear bumper - Deformed - Repair and paint



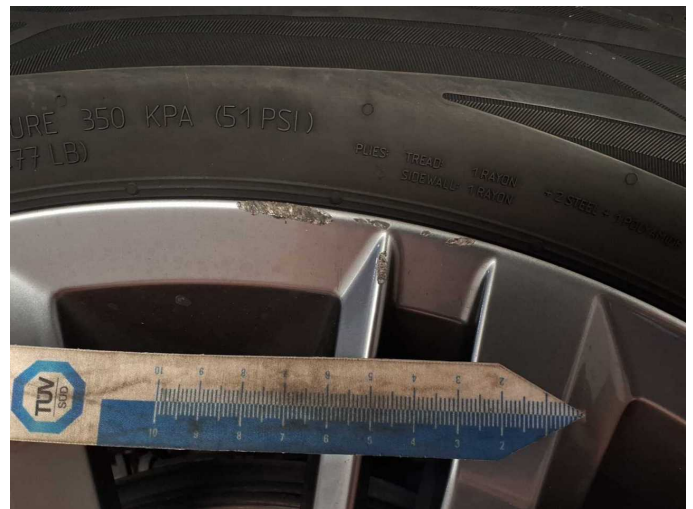
**Damage 9:** Rear bumper: Rear bumper - Deformed - Repair and paint



**Damage 10:** Wheel / tyres: Alloy rim - front right side (Materialabtrag) - Scratched - Replace



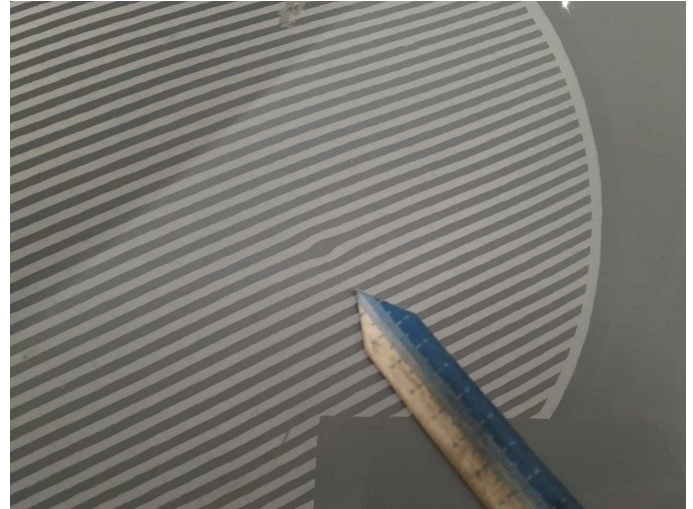
**Damage 10:** Wheel / tyres: Alloy rim - front right side (Materialabtrag) - Scratched - Replace



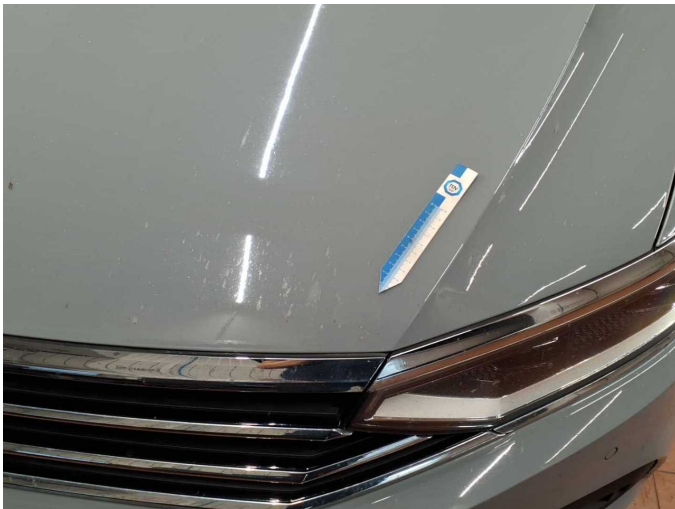
**Damage 10:** Wheel / tyres: Alloy rim - front right side (Materialabtrag) - Scratched - Replace



**Damage 11:** Bonnet: Bonnet (+ Harz entfernen) - Dent / paintcoat damage - Repair and paint



**Damage 11:** Bonnet: Bonnet (+ Harz entfernen) - Dent / paintcoat damage - Repair and paint



**Damage 11:** Bonnet: Bonnet (+ Harz entfernen) - Dent / paintcoat damage - Repair and paint



**Damage 11:** Bonnet: Bonnet (+ Harz entfernen) - Dent / paintcoat damage - Repair and paint



**Damage 11:** Bonnet: Bonnet (+ Harz entfernen) - Dent / paintcoat damage - Repair and paint



**Damage 11:** Bonnet: Bonnet (+ Harz entfernen) - Dent / paintcoat damage - Repair and paint





**Damage 11:** Bonnet: Bonnet (+ Harz entfernen) - Dent / paintcoat damage - Repair and paint



**Damage 11:** Bonnet: Bonnet (+ Harz entfernen) - Dent / paintcoat damage - Repair and paint



**Damage 11:** Bonnet: Bonnet (+ Harz entfernen) - Dent / paintcoat damage - Repair and paint



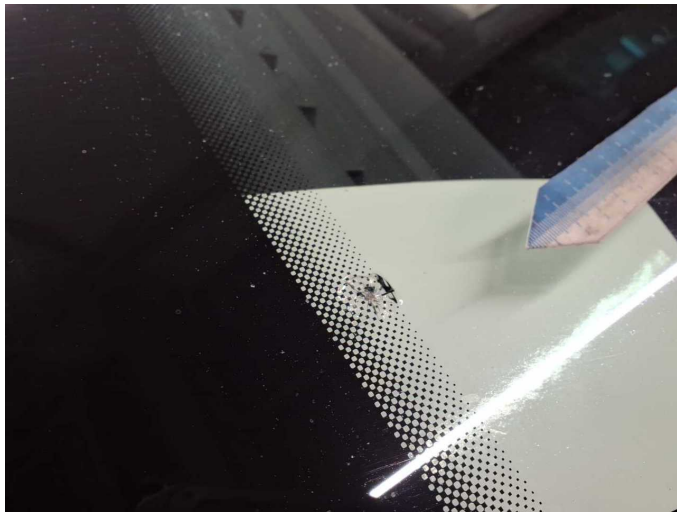
**Damage 11:** Bonnet: Bonnet (+ Harz entfernen) - Dent / paintcoat damage - Repair and paint



**Damage 12:** Vehicle glazing: Windscreen - Stone chips - Replace



**Damage 12:** Vehicle glazing: Windscreen - Stone chips - Replace



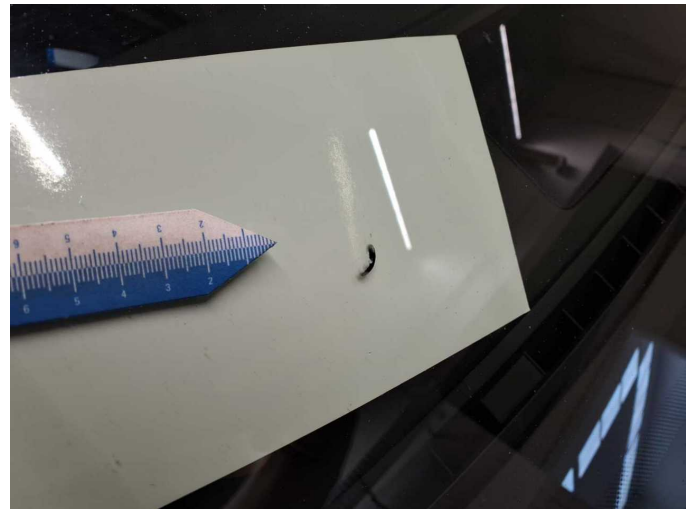
**Damage 12:** Vehicle glazing: Windscreen - Stone chips - Replace



**Damage 12:** Vehicle glazing: Windscreen - Stone chips - Replace



**Damage 12:** Vehicle glazing: Windscreen - Stone chips - Replace



**Damage 12:** Vehicle glazing: Windscreen - Stone chips - Replace



# Wartungshistorie

(gemäß Auftraggeber Informationen)

Fahrgestellnummer: WVVZZZ3CZNE077842

Hersteller / Modell: VOLKSWAGEN VW Passat Variant 2.0 TDI SCR DSG Business

Datum	KM-Stand	Beschreibung
04.04.2025	120.161	Motoröl b. Wartung; Ölfilter ern; Regelwartungsdienst; Wartung Sonstiges
24.09.2024	89.398	Bremse Sonstiges; Bremsflüssigkeit; Bremsflüssigkeit ern; Bremsklötze hinten; Bremsklötze vorne; Bremsscheiben hinten; Bremsscheiben vorne; Kraftstofffilter ern; Luftfiltereinsatz ern; Motoröl b. Wartung; Ölfilter ern; Regelwartungsdienst; Systemtest/Eigendiagnose; Wartung Sonstiges
18.01.2024	60.050	Motoröl b. Wartung; Ölfilter ern; Regelwartungsdienst; Wartung Sonstiges
30.10.2023	48.013	Bremse Sonstiges; Bremsklötze hinten; Bremsklötze vorne; Bremsscheiben vorne
10.05.2023	27.885	Motoröl b. Wartung; Regelwartungsdienst