



Expertise

Protocol number: 41195987
Order No. / Reference: 24901710
Inspection date: 25 Aug 2025

Manufacturer: Volkswagen

Model: Passat Variant 2.0 TDI SCR Business

VIN: WVGZZZ3CZNE075621



Vehicle details	
Manufacturer / Type / Model / Equipment	
Volkswagen Passat Variant 2.0 TDI SCR Business	
Vehicle Identification number	WVGZZZ3CZNE075621
Mileage (Read)	193,539 km
First registration	22 Jun 2022
Number of holders	1
Power / Engine displacement	110 kw / 1,968 ccm
Fuel type / Cylinder	Diesel / 4
Gearbox / Number of gears	Manual / 6
Type of drive	Front drive
Type of vehicle	Station wagon
Colour / colour code	Deep Black Perleffekt (C9X)
Doors / Seats	5 / 5
Upholstery type	Cloth
Colour of upholstery	Black-Grey
Vehicle with smoke odor	no



Vehicle details

Maintenance booklet / proof	digital proof / complete	Next maintenance in	21,600 km
Last maintenance on / at	07/2025 at 193,013 km		
Key is / should be	2 / 2	FZG documents	ZB#2 (B) was available (copy), ZB#1 (S) was not available
		Letter No.	GJ210753
Previous damage / Accident	None detectable	Repainting	None detectable
Inspection conditions	sufficient	Lifting equipment / pit	yes
Test drive	Not performed	Engine function test	Performed
Manufacturer key number/ type code number	0603 / BQS 02527		
Emission standard	EURO6;WLTP;AP;PI/CI; M, N1 I	Fine dust sticker	
Permitted total weight	2,170 kg	Empty weight	

Tyres

Mounted tyres

#	Tyre size	Type of tyre	Manufacturer	Tread depth
1)	215/60 R16 95V	Summer tyres on Light alloy	Continental	5mm / 5mm
2)	215/60 R16 95V	Summer tyres on Light alloy	Continental	6mm / 6mm

Additional tyres

#	Tyre size	Type of tyre	Manufacturer	Tread depth
1)	215/60 R16 99H	Winter tyres on Light alloy	Continental	5mm / 5mm
2)	215/60 R16 99H	Winter tyres on Light alloy	Continental	5mm / 5mm

Replacement

Typ	Tyre size	Type of tyre	Manufacturer	Tread depth
	Tirefit	Expiration date 04/2026		

Legend: Tread depth information for tires on the left is in the first place, for tires on the right is in the second place on the axle in the direction of travel

Equipment

Standard equipment

- Driver and front passenger airbags (passenger airbag deactivation switch)
- Anti-lock braking system (ABS)
- Automatic distance control ACC including speed limiter
- Exterior mirrors electrically adjustable, heated, ambient lighting (automatically dimming on driver's side)
- Hill start assist
- Chrome strips on the side windows
- Roof rails black
- tachometer
- LED entry/warning lights in the front doors
- Electronic parking brake including auto-hold function
- Automatic headlight switching (with daytime running lights, "leaving home" function and manual "coming home" function)
- Pedestrian detection
- Luggage compartment floor can be raised
- Interior lights with switch-off delay and dimming function (2 LED reading lights each at the front and rear)
- Air conditioning (with active combination filter)
- Front headrests (safety-optimized, length and height adjustable)
- LED headlights with daytime running lights
- Headlight range adjustment
- Front center armrest, height and length adjustable, with storage box (2 rear air vents with chrome slats)
- Fatigue detection (detects signs of driver fatigue based on characteristic steering behavior, time of day, and driving duration and issues a visual and acoustic warning)
- Mesh partition
- Non-smoking version (storage compartment and 12 V socket at the front)
- Emergency braking assistant "Front Assist" (for automatic distance control ACC up to 210 km/h)
- Package: Light and Sight Package "Plus" (LED lights in the front footwells, electrically adjustable and heated exterior mirrors, automatically dimming on the driver's side, LED entry/warning lights in the front doors, automatic headlight control with daytime running lights, "leaving home" function, and manual "coming home" function, interior lights with delayed switch-off and dimming function, 2 LED reading lights each at the front and rear, auto-dimming interior mirror, illuminated vanity mirror, retractable sun visors, rain sensor)
- Radio accessories: Digital radio reception DAB+ (reception of digitally broadcast radio stations and traffic information in addition to the analogue station offering - reception depends on the local availability of digital networks - expanded range of radio programs - improved reception performance)
- Wheels: Tire Mobility Set (12-volt compressor and tire sealant)
- Keyless start system without safe lock
- Airbag, head airbag system for front and rear passengers (including front side airbags)
- App-Connect (Volkswagen offers three interfaces for connecting smartphones with numerous options: - Apple CarPlay - Android Auto from Google - MirrorLink)
- Cup holders (2) front
- Brake light, third
- Headlining in Mistral Grey
- diesel particulate filter
- Parking aid - warning signals for obstacles in the front and rear areas
- Electronic stabilization program and electromechanical brake booster
- Remote release for the trunk lid
- Front windscreen in laminated safety glass, heat and sound insulating
- Transmission: 6-speed manual transmission
- ISOFIX anchor points (for attaching two child seats to the rear seats, including i-Size child seats)
- Headrests (3) rear
- LED fog lights and cornering lights
- LED taillights
- Steering wheel: Multifunction steering wheel in leather (gear lever knob in leather)
- Premium multifunction display with multi-color display (including: - Outside temperature - Average fuel consumption - Average speed - Distance traveled - Driving time - Gear recommendation - Speed warning - Comfort - Current fuel consumption - Range - Service - Time with extended display options, e.g.: - Digital speedometer - Digital oil temperature indicator - Light & visibility - Language - Auxiliary heating - Winter tires)
- Emergency call service (no registration required, service is activated upon delivery)
- Upholstery: "Business" fabric (seat centre panels of the front seats and the outer rear seats in "Weave" fabric)
- Proactive occupant protection system in conjunction with "Front Assist" (detects critical traffic situations with increased accident potential - prepares vehicle occupants and the vehicle for a possible accident by tightening the front seat belts, restraining the driver and front passenger, and closing open windows and the sunroof except for a crack)
- Composition radio (16.5 cm touchscreen, 8 speakers, 4 x 20 watt output, diversity antenna for FM reception, dual tuner, RDS, MP3 playback, USB-C interface, 3-way tone control)
- Tire pressure monitoring indicator (passive)
- Wheels: 4 light alloy wheels "Sepang" 6.5 J x 16 (tires 215/60 R 16, rolling resistance optimized)
- Rear seat bench undivided, backrest asymmetrically split and foldable, with center armrest (and through-loading option)



- Power steering (electromechanical, speed-dependent)
- Seats: Comfort seats in the front
- Seats: Lumbar supports in front (driver's side electrically adjustable)
- Lane Assist (warns with corrective steering intervention if the vehicle unintentionally leaves the lane)
- 12-V socket on the rear center console (and in the luggage compartment)
- First aid kit, warning triangle and safety vest
- Electronic immobilizer

- Seat belts: Three-point automatic seat belt (Seat belt for middle rear seat - Seat belts for outer rear seats - Front seat belts with height adjustment and belt tensioner)
- Seats: Height-adjustable front seats (ergoComfort seat on the driver's side - with electric backrest adjustment)
- Start-stop system (with brake energy recovery)
- Telephone interface
- Textile floor mats (front and rear)
- Warning sound and light for unfastened seat belts at the front and rear

Extra equipment

- Folding trailer hitch (with electric release)
- Luggage net
- Finish: pearl effect
- "Discover Media" navigation system including "Streaming & Internet" (4x20 watt user interface with proximity sensor, dual tuner with phase diversity, vehicle menu speed, volume adjustment, 2D map display, tone control, triple TFT display with touchscreen operation, "Discover Media" navigation system including "Streaming & Internet," MP3 radio, telephone contact address for navigation, telephone interface, 2 USB ports also for iPod/iPhone, traffic sign recognition, "VW Media Control," We Connect Plus, 3 years, including We Connect route guidance, dynamic RDS TMC tuner)
- Seats: Lumbar supports front, driver's side electric including massage function
- "Comfort" telephone interface with inductive charging function (hands-free system)

- App-Connect Wireless (Volkswagen offers three interfaces for connecting smartphones with numerous options: - Apple CarPlay - Android Auto from Google - MirrorLink)
- Package: "Business Premium" package including navigation (from Business) (2 USB-C ports in the front, 1 USB-C charging socket in the rear, 230 V socket, App-Connect including wireless, Apple CarPlay, Android Auto, "Travel Assist" driving assistant and "Lane Assist" lane keeping assistant, Air Care Climatronic with 3-zone temperature control, allergen filter and rear controls, electric lumbar supports on the driver's side, massage function on the driver's side, "Rear View" reversing camera, heated windshield washer nozzles, Comfort telephone interface, inductive charging function, heated front seats)
- Auxiliary heating and ventilation (with radio remote control and timer)

Brief expert findings

Documents submitted	At the time of the inspection, the registration certificate Part 2 (letter) was available, but the registration certificate Part 1 (certificate) was not. (Copy)
VIN comparison	The vehicle identification number (VIN) was read from the vehicle and its conformity with the submitted documents was verified during the inspection by the undersigned.
Inspection	The inspection conditions were sufficient for the assessment of the vehicle. Lifting equipment and a pit were available for examining the vehicle.
Test drive	No test drive/maneuvering was carried out during the inspection of the vehicle.
Engine function test	An engine test run was performed.

Value reducing factors

No.	Component group	Description
1	Wing mirror - left side	Cap - Scratch(es) - Smart repair
2	Sill - right side	Sill - dent(s) - Smart repair
3	Side panel - rear right side	Side panel - dent(s) - Smart repair
4	Bonnet	Bonnet - dent(s) - Smart repair
5	Door - front right side	Door - Paint defect - Smart repair
6	Side panel - rear right side	Sill - dent(s) - Smart repair
7	Side panel - rear left side	Sill - Dent / paintcoat damage - Smart repair
8	Rear bumper	Rear bumper - Scratched - Paint



No.	Component group	Description
9	Side panel - rear left side	Side panel (Delle& kratzer) - dent(s) - Repair and paint

Wear and tear

No.	Component group	Description
1	Vehicle glazing	Windscreen - Stone chips - No deduction
2	Bonnet	Bonnet - Stone chips - No deduction
3	Front bumper	Front bumper - Stone chips - No deduction
4	Body	Body - Scratch(es) - No deduction
5	Door - rear left side	Brightware - lower - dent(s) - No deduction
6	Door - rear right side	Brightware - lower - dent(s) - No deduction
7	Door - front left side	Brightware - lower - dent(s) - No deduction
8	Door - front right side	Brightware - lower - dent(s) - No deduction

The vehicle shows signs of wear commensurate with its age and use.

Order/Scope of order

The order was placed to prepare a sales report for the vehicle described. This includes the following:

- Description of core relevant information about the vehicle
- Documentation of equipment features
(*Delivery by third-party service providers*)
- Documentation of damage, defects, missing parts
- Documentation of previous damage, unrepaired previous damage, repainting
- a brief visual or functional inspection of the equipment details if possible.
(*Functional tests of driver assistance systems are not included in the scope of services!*)
- a photo documentation of the vehicle

Basis for the order

This product is based on the Alphabet Fuhrpark GmbH guidelines for vehicle returns and valuations. The expert makes the explicit findings in each individual case objectively within the framework of the specified standards based on his or her own expertise.

The vehicle inspection takes place in a disassembled state.

Damage or defects that can only be detected during disassembly/diagnosis work or through advanced knowledge remain within the scope of the prognosis risk. An extended risk exists for concealed defects caused by fraudulent deception and not identifiable by the expert.

Damage or defects resulting from normal use or wear and tear of the vehicle will be accepted according to the applicable standard.

There was no explicit identification or monetary consideration of the expected features within the product.

Features which in their nature and severity slightly exceed normal use but do not constitute unacceptable damage will be documented and identified under signs of use if necessary.

Damage or defects which, according to the underlying standard, can no longer be attributed to normal use or wear and tear are listed in the product under "Depreciating Factors".

Depending on the product specification, a monetary ID can be provided. If this takes place, the costs can be 100% d or pro rata depending on the vehicle's age and mileage.

Previous damages

Apparently, no repaired previous damage could be found on the vehicle.



Comments

- Winterradsatz ist kein Bestandteil des Auslieferumfangs



Figure 1: Diagonal front (left)



Figure 2: Diagonal front (right)



Figure 3: Diagonal rear (left)



Figure 4: Diagonal rear (right)



Figure 5: Interior - front



Figure 6: Interior - rear



Figure 7: Instrument cluster



Figure 8: Instrument panel



Figure 9: interior 360° view



Figure 10: Cargo area



Figure 11: VIN



Figure 12: Mounted tyres

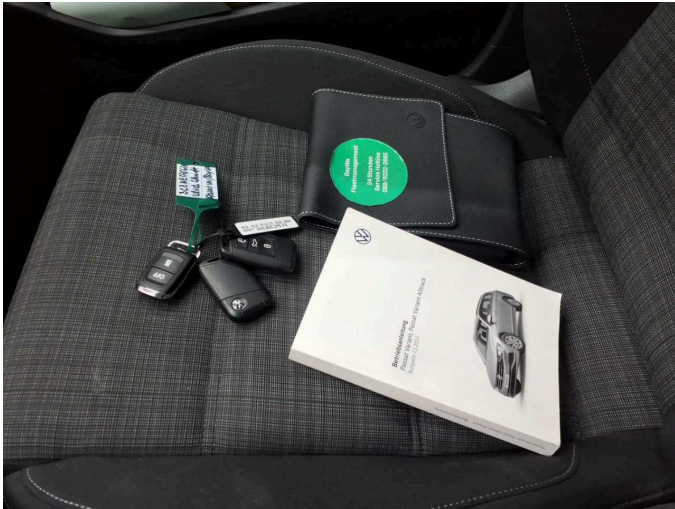


Figure 13: Documents

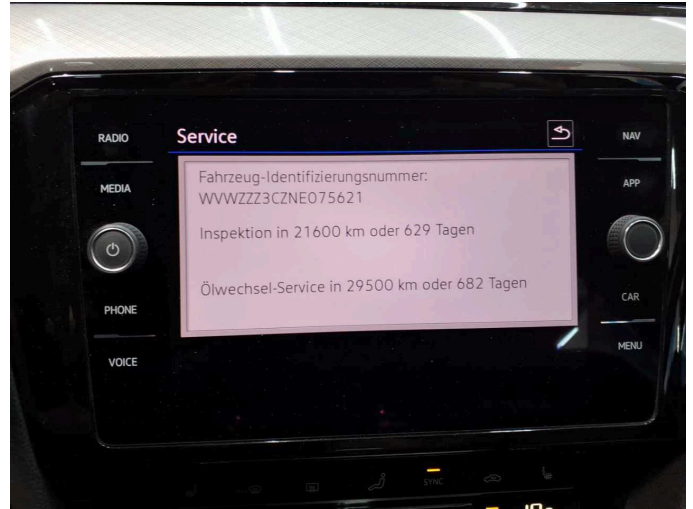


Figure 14: Documents



Figure 15: Additional tyres



Figure 16: Navigation



Figure 17: Misc.



Figure 18: Misc.



Figure 19: Misc.



Figure 20: Misc.



Figure 21: Misc.



Figure 22: Misc.



Figure 23: Misc.

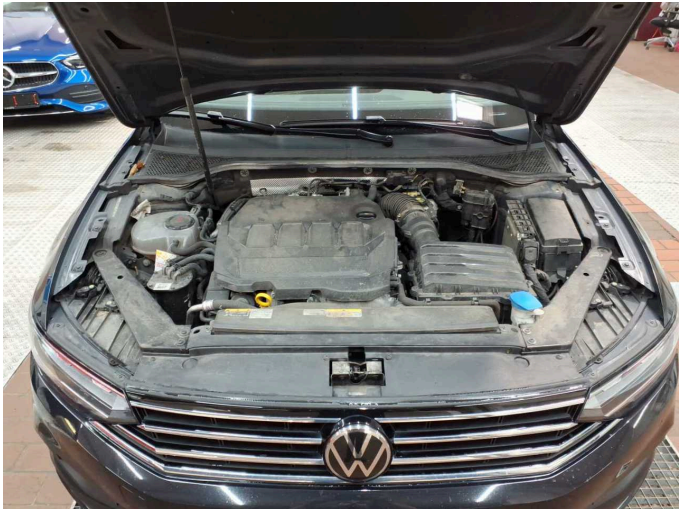


Figure 24: Misc.



Figure 25: Misc.



Figure 26: Misc.



Figure 27: Misc.

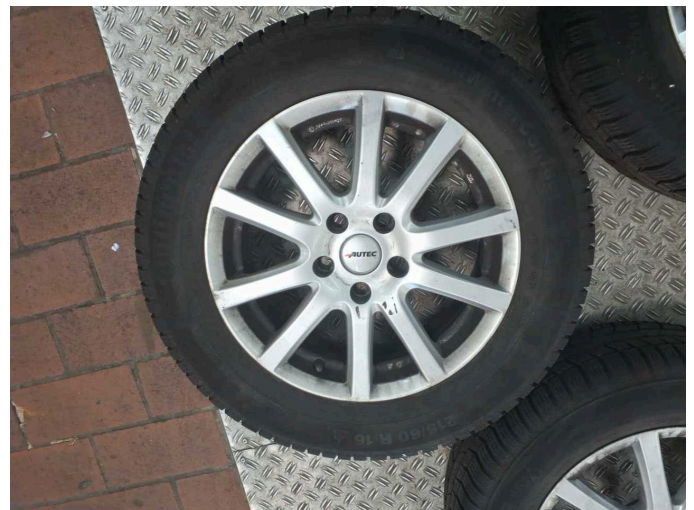


Figure 28: Misc.



Figure 29: Misc.

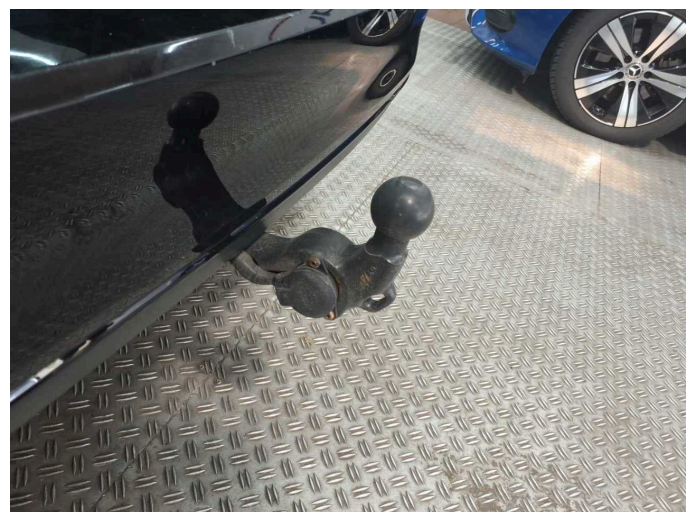


Figure 30: Misc.



Figure 31: Misc.



Figure 32: Misc.



Figure 33: Misc.



Damage 1: Wing mirror - left side: Cap - Scratch(es) - Smart repair



Damage 1: Wing mirror - left side: Cap - Scratch(es) - Smart repair



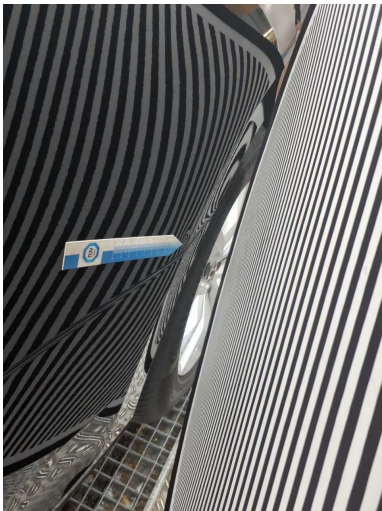
Damage 2: Sill - right side: Sill - dent(s) - Smart repair



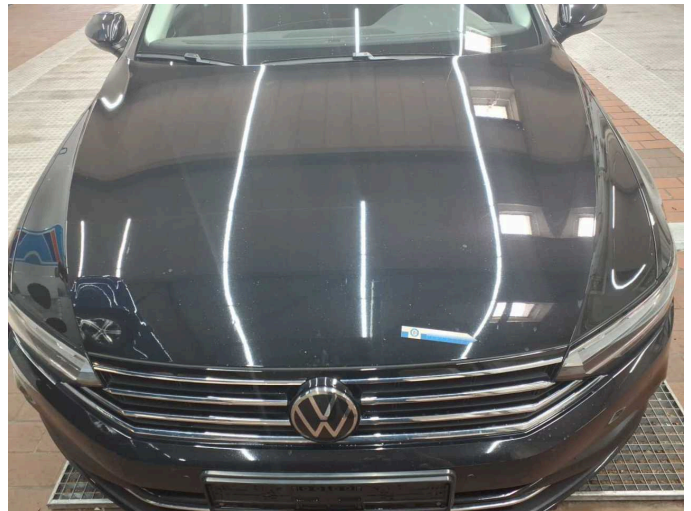
Damage 2: Sill - right side: Sill - dent(s) - Smart repair



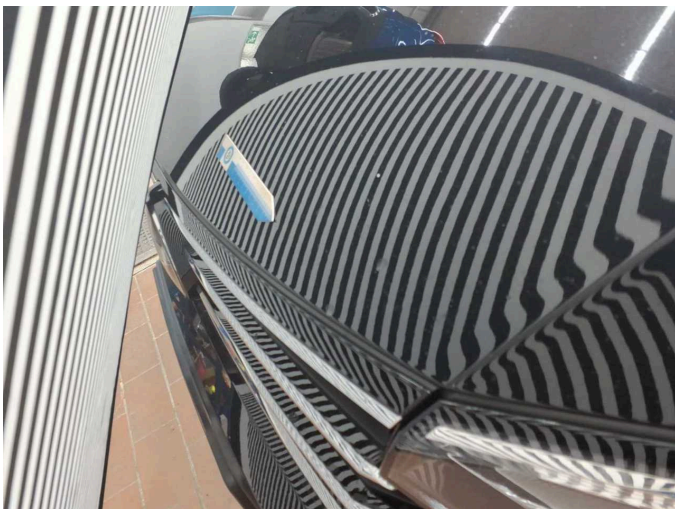
Damage 3: Side panel - rear right side: Side panel - dent(s) - Smart repair



Damage 3: Side panel - rear right side: Side panel - dent(s) - Smart repair



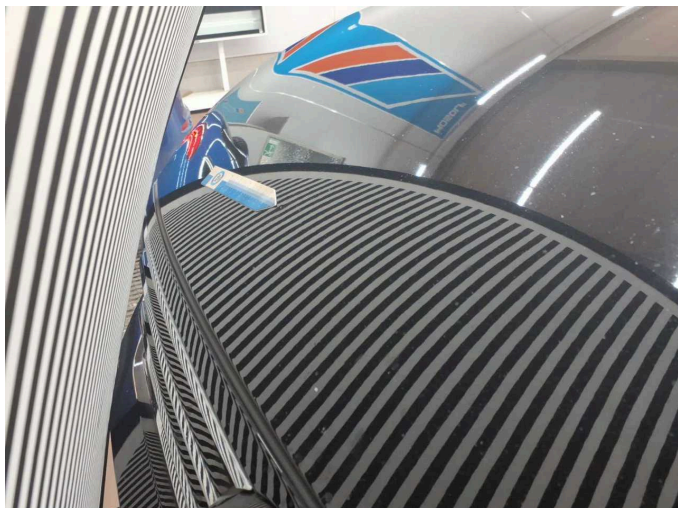
Damage 4: Bonnet: Bonnet - dent(s) - Smart repair



Damage 4: Bonnet: Bonnet - dent(s) - Smart repair



Damage 4: Bonnet: Bonnet - dent(s) - Smart repair



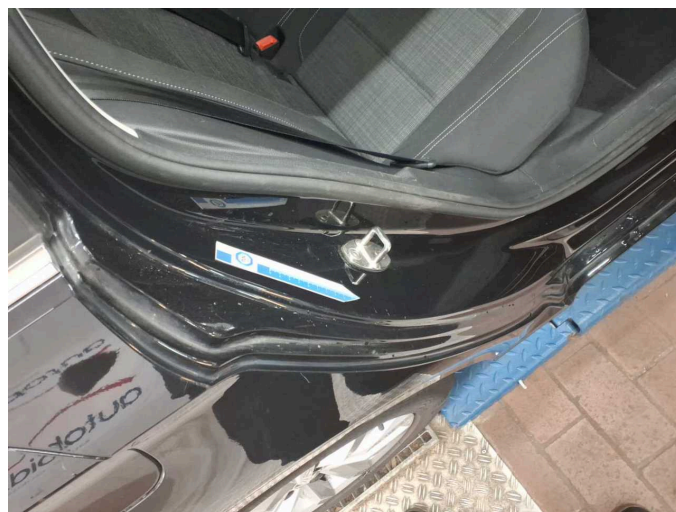
Damage 4: Bonnet: Bonnet - dent(s) - Smart repair



Damage 5: Door - front right side: Door - Paint defect - Smart repair



Damage 5: Door - front right side: Door - Paint defect - Smart repair



Damage 6: Side panel - rear right side: Sill - dent(s) - Smart repair



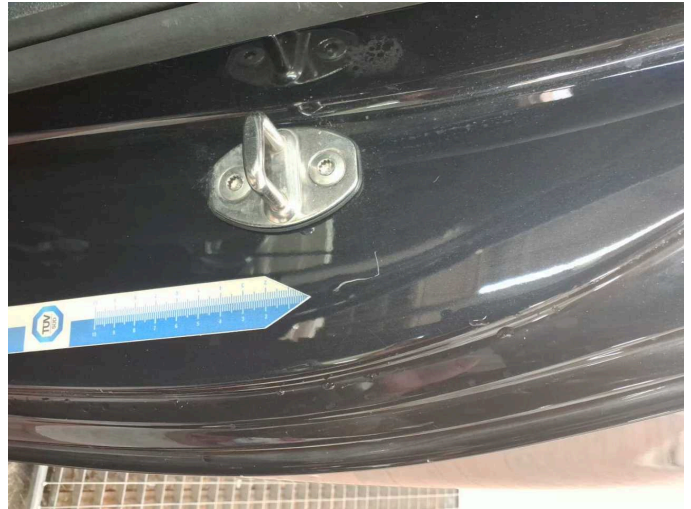
Damage 6: Side panel - rear right side: Sill - dent(s) - Smart repair



Damage 7: Side panel - rear left side: Sill - Dent / paintcoat damage - Smart repair



Damage 7: Side panel - rear left side: Sill - Dent / paintcoat damage - Smart repair



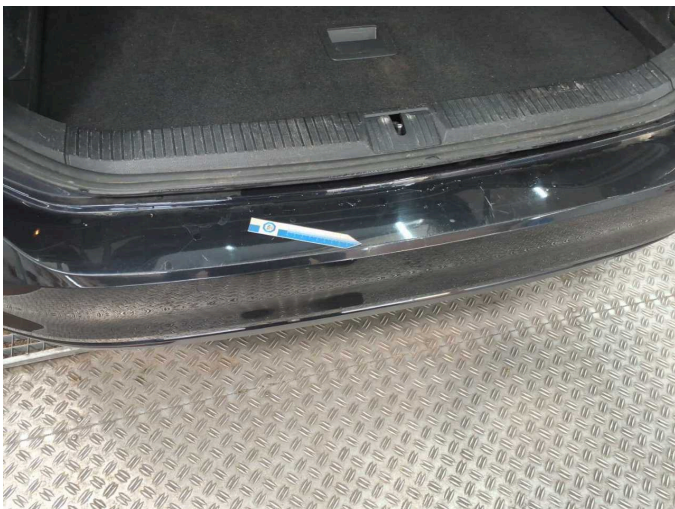
Damage 7: Side panel - rear left side: Sill - Dent / paintcoat damage - Smart repair



Damage 8: Rear bumper: Rear bumper - Scratched - Paint



Damage 8: Rear bumper: Rear bumper - Scratched - Paint



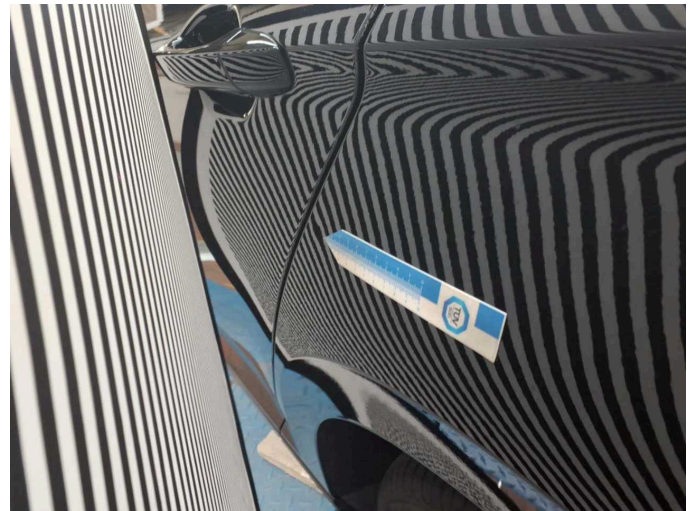
Damage 8: Rear bumper: Rear bumper - Scratched - Paint



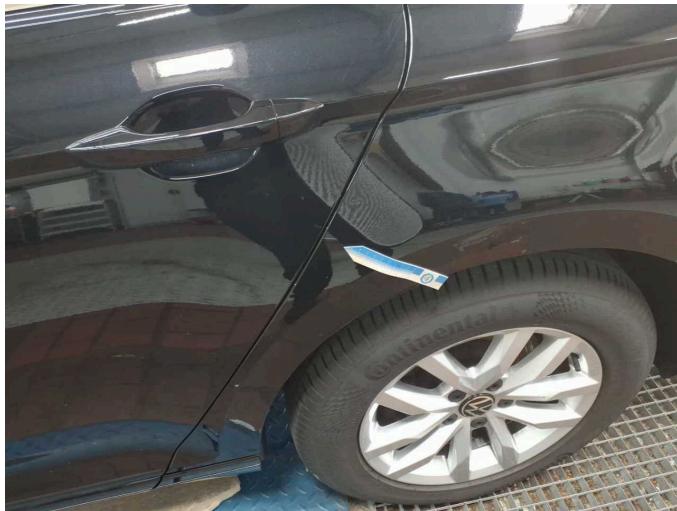
Damage 8: Rear bumper: Rear bumper - Scratched - Paint



Damage 9: Side panel - rear left side: Side panel (Delle& kratzer) - dent(s) - Repair and paint



Damage 9: Side panel - rear left side: Side panel (Delle& kratzer) - dent(s) - Repair and paint



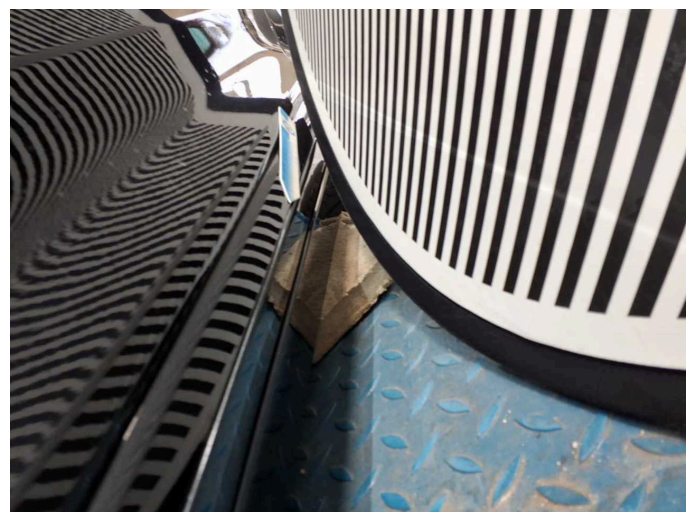
Damage 9: Side panel - rear left side: Side panel (Delle& kratzer) - dent(s) - Repair and paint



Damage 9: Side panel - rear left side: Side panel (Delle& kratzer) - dent(s) - Repair and paint



Wear and tear 5: Door - rear left side: Brightware - lower - dent(s) - No deduction



Wear and tear 5: Door - rear left side: Brightware - lower - dent(s) - No deduction



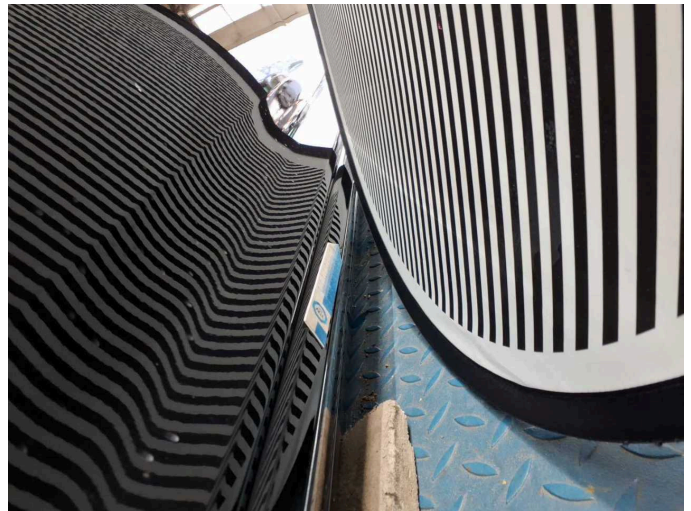
Wear and tear 6: Door - rear right side: Brightware - lower - dent(s) - No deduction



Wear and tear 6: Door - rear right side: Brightware - lower - dent(s) - No deduction



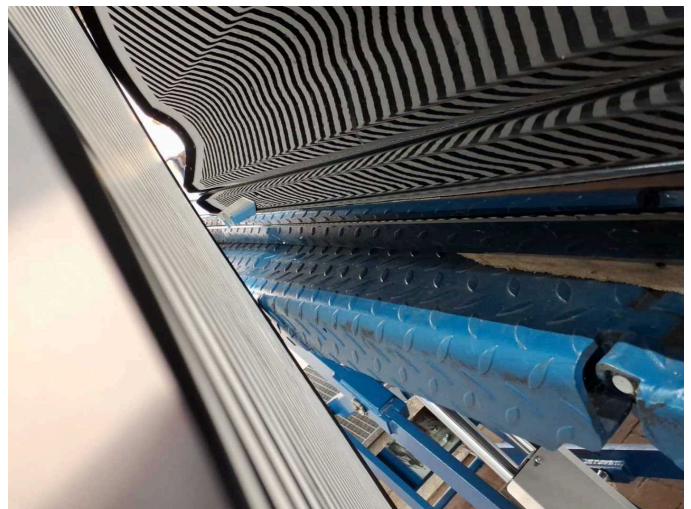
Wear and tear 7: Door - front left side: Brightware - lower - dent(s) - No deduction



Wear and tear 7: Door - front left side: Brightware - lower - dent(s) - No deduction



Wear and tear 8: Door - front right side: Brightware - lower - dent(s) - No deduction



Wear and tear 8: Door - front right side: Brightware - lower - dent(s) - No deduction



Wartungshistorie

(gemäß Auftraggeber Informationen)

Fahrgestellnummer: WVVZZZ3CZNE075621

Hersteller / Modell: VOLKSWAGEN VW Passat Variant 2.0 TDI SCR Business

Datum	KM-Stand	Beschreibung
22.07.2025	193.013	Motoröl b. Wartung; Ölfilter ern; Ölwechsel; Wartung Sonstiges
05.06.2025	189.464	Systemtest/Eigendiagnose
16.05.2025	185.023	AU; Kraftstofffilter ern; Luftfiltereinsatz ern; Regelwartungsdienst; Systemtest/Eigendiagnose; Wartung Sonstiges
23.01.2025	164.381	Bremse Sonstiges; Bremsklötze hinten; Motoröl b. Wartung; Ölfilter ern; Ölwechsel; Wartung Sonstiges
14.11.2024	151.843	Regelwartungsdienst; Wartung Sonstiges; Wartung Sonstiges
01.08.2024	133.083	Bremse Sonstiges; Bremsflüssigkeit; Bremsflüssigkeit ern; Bremsscheiben + Klötze v; Bremsscheiben vorne; Motoröl b. Wartung; Ölfilter ern; Ölwechsel; Wartung Sonstiges; Wartung Sonstiges
28.05.2024	122.048	Regelwartungsdienst; Wartung Sonstiges
23.02.2024	104.900	Bremse Sonstiges; Bremsklötze hinten; Bremsscheiben hinten; Motoröl b. Wartung; Ölfilter ern; Ölwechsel; Wartung Sonstiges
08.12.2023	92.694	Kraftstofffilter ern; Luftfiltereinsatz ern; Regelwartungsdienst; Systemtest/Eigendiagnose; Wartung Sonstiges
04.09.2023	74.096	Motoröl b. Wartung; Ölfilter ern; Ölwechsel; Wartung Sonstiges
26.06.2023	60.396	Regelwartungsdienst
06.04.2023	43.503	Motoröl b. Wartung; Ölfilter ern; Ölwechsel; Wartung Sonstiges
13.01.2023	29.794	Bremse Sonstiges; Bremsklötze hinten; Regelwartungsdienst; Wartung Sonstiges
30.09.2022	13.835	Motoröl b. Wartung; Ölfilter ern; Ölwechsel; Wartung Sonstiges