



Expertise

Protocol number: 41150400
Order No. / Reference: 25072377
Inspection date: 20 Aug 2025

Manufacturer: Volkswagen

Model: Passat Variant 2.0 TDI SCR DSG Business

VIN: WVVZZZ3CZNE074909



Vehicle details	
Manufacturer / Type / Model / Equipment	
Volkswagen Passat Variant 2.0 TDI SCR DSG Business	
Vehicle Identification number	WVVZZZ3CZNE074909
Mileage (Read)	127,085 km
First registration	17 Jun 2022
Number of holders	1
Power / Engine displacement	110 kw / 1,968 ccm
Fuel type / Cylinder	Diesel / 4
Gearbox / Number of gears	Automatic / 7
Type of drive	Front drive
Type of vehicle	Station wagon
Colour / colour code	Pyritsilber Metallic
Doors / Seats	5 / 5
Upholstery type	Cloth
Colour of upholstery	Black-Anthracite



Vehicle details

Maintenance booklet / proof	digital proof / complete	Next maintenance in	4,400 km
Last maintenance on / at	07/2025 at 126,868 km		
Key is / should be	2 / 2	FZG documents	ZB#2 (B) was available (copy), ZB#1 (S) was not available
		Letter No.	GJ205748
Previous damage / Accident	Detectable	Repainting	Detectable
Inspection conditions	sufficient	Lifting equipment / pit	yes
Test drive	Not performed	Engine function test	Performed
Manufacturer key number/ type code number	0603 / BQS 02920		
Emission standard	EURO6;WLTP;AP;PI/CI; M, N1 I	Fine dust sticker	
Permitted total weight	2,200 kg	Empty weight	

Tyres

Mounted tyres

#	Tyre size	Type of tyre	Manufacturer	Tread depth
1)	215/60 R16 99H	Winter tyres on Steel rim with wheel cover	Fulda	5mm / 5mm
2)	215/60 R16 99H	Winter tyres on Steel rim with wheel cover	Dunlop	4mm / 4mm

Additional tyres

#	Tyre size	Type of tyre	Manufacturer	Tread depth
1)	215/60 R16 95V	Summer tyres on Light alloy	Continental	3mm / 3mm
2)	215/60 R16 95V	Summer tyres on Light alloy	Continental	3mm / 3mm

Replacement

Typ	Tyre size	Type of tyre	Manufacturer	Tread depth
	Tirefit	Expiration date 04/2026		

Legend: Tread depth information for tires on the left is in the first place, for tires on the right is in the second place on the axle in the direction of travel

Equipment

Standard equipment

- Airbag for driver and front passenger
- Anti-lock braking system (ABS)
- Automatic distance control ACC "stop & go", including speed limiter
- Cup holders (2) front
- Brake light, third
- Headlining in Mistral Grey
- diesel particulate filter
- Parking aid - warning signals for obstacles in the front and rear areas
- Electronic stabilization program and electromechanical brake booster
- Front windscreen in laminated safety glass, heat and sound insulating
- Transmission: 7-speed DSG
- ISOFIX anchorage points
- Headrests (3) rear
- LED fog lights and cornering lights
- LED headlights with daytime running lights
- Headlight range adjustment
- Front center armrest height and length adjustable, with storage box
- Mesh partition
- Emergency braking assistant "Front Assist" (for automatic distance control ACC up to 210 km/h)
- Upholstery: "Business" fabric
- Radio "Composition"
- Radio accessories: Digital radio reception DAB+
- Wheels: 4 light alloy wheels "Sepang" 6.5 J x 16
- Rear seat bench undivided, backrest asymmetrically divided and foldable, with center armrest
- Power steering
- Seats: Comfort seats in the front
- Seats: Front seats height adjustable
- Start-stop system
- Telephone interface
- First aid kit, warning triangle and safety vest
- Electronic immobilizer
- Airbag, head airbag system for front and rear passengers
- App Connect
- Exterior mirrors electrically adjustable, heated, ambient lighting
- Hill start assist
- Chrome strips on the side windows
- Roof rails black
- tachometer
- LED entry/warning lights in the front doors
- Electronic parking brake including auto-hold function
- Automatic headlight switching
- Remote release for the trunk lid
- Pedestrian detection
- Luggage compartment floor can be raised
- Interior lights with switch-off delay and dimming function
- Air conditioning
- Front headrests
- LED taillights
- Steering wheel: Multifunction steering wheel in leather, with shift paddles
- Multifunction display "Premium" with multi-color display
- Fatigue detection
- Non-smoking version
- Emergency call service
- Package: Light and Vision Package "Plus"
- Proactive occupant protection system in conjunction with "Front Assist"
- Tire pressure monitoring indicator (passive)
- Wheels: Tire Mobility Set
- Leather gearshift knob
- Keyless start system without safe lock
- Seat belts: three-point automatic seat belt
- Seats: Lumbar supports in front
- Lane keeping assistant "Lane Assist"
- 12V socket on the rear center console
- Textile floor mats
- Warning sound and light for unfastened seat belts at the front and rear

Extra equipment

- Active Info Display 9S0
- Folding trailer hitch (with electric release)
- App-Connect Wireless (Volkswagen offers three interfaces for connecting smartphones with numerous options: - Apple CarPlay - Android Auto from Google - MirrorLink)
- Exterior mirrors with ambient lighting and passenger mirror lowering (folding and heated - dimming on driver's side)
- Airbags: Driver's knee airbag, side airbags, and rear seat belt pretensioners (driver and front passenger airbags with passenger airbag deactivation, including driver's knee airbag - three-point automatic seat belts with seat belt pretensioners for the outer rear seats - side airbags for the outer rear seats, including front side airbags and head airbag system)
- Headliner in titanium black PDS
- Digital Cockpit, multi-colored (various info profiles selectable)



- Anti-theft alarm system (interior monitoring, backup horn and tow-away protection - illuminated vanity mirror in the sun visors, extendable sun visors)
- Fire extinguisher
- Luggage net
- Head-up display
- Paint finish: metallic
- "Discover Media" navigation system including "Streaming & Internet" (4x20 watt user interface with proximity sensor, dual tuner with phase diversity, vehicle menu speed, volume adjustment, 2D map display, tone control, triple TFT display with touchscreen operation, "Discover Media" navigation system including "Streaming & Internet," MP3 radio, telephone contact address for navigation, telephone interface, 2 USB ports also for iPod/iPhone, traffic sign recognition, "VW Media Control," We Connect Plus, 3 years, including We Connect route guidance, dynamic RDS TMC tuner)
- Package: "Easy Open & Close" package including safe security (extendable and removable luggage compartment cover with electric opening - tailgate with sensor-controlled opening and closing, with remote unlocking - keyless locking and starting system "Keyless Access" with safe security)
- Proactive occupant protection system and lane change assistant "Side Assist" (Proactive occupant protection system in conjunction with "Front Assist" and "Side Assist" - lane change assistant "Side Assist" and rear traffic assistant)
- Sun blinds on the rear door windows
- Voice control
- Laminated safety glass, sound-insulating for front and side windows (including rear side windows and rear window tinted)
- Chassis: Rear suspension with fully automatic level control
- Removable luggage compartment protective mat (back of the rear seat backrest with black rubber covering)
- Steering wheel: Multifunction steering wheel in leather, heated, with shift paddles
- Package: "Business Premium" package including navigation (from Business) (2 USB-C ports in the front, USB-C charging socket in the rear, 230V socket App-Connect including wireless, Apple CarPlay, Android Auto, "Travel Assist" driving assistant and "Lane Assist" lane keeping assistant, Air Care Climatronic with 3-zone temperature control, active combo filter and rear controls, electric lumbar support on the driver's side, massage function on the driver's side, "Rear View" reversing camera, heated windshield washer nozzles, Comfort telephone interface, inductive charging function, heated front seats)
- Package: IQ.DRIVE including IQ.LIGHT - LED matrix headlights (Dynamic Light Assist dynamic high beam control, Travel Assist driving assistant, Lane Assist lane keeping assistant, and Emergency Assist pedestrian detection, LED matrix headlights, LED daytime running lights, cornering lights, and dynamic indicators, LED taillights with dynamic indicators, dynamic headlight range control with dynamic cornering lights, rear fog lights on both sides, reversing lights on both sides, Park Assist parking assistant including parking aid, Side Assist lane change assistant, and rear traffic exit assistant)
- "Comfort" telephone interface with inductive charging function (hands-free system)

Brief expert findings

Documents submitted	At the time of the inspection, the registration certificate Part 2 (letter) was available, but the registration certificate Part 1 (certificate) was not. (Copy)
VIN comparison	The vehicle identification number (VIN) was read from the vehicle and its conformity with the submitted documents was verified during the inspection by the undersigned.
Inspection	The inspection conditions were sufficient for the assessment of the vehicle. Lifting equipment and a pit were available for examining the vehicle.
Test drive	No test drive/maneuvering was carried out during the inspection of the vehicle.
Engine function test	An engine test run was performed.

Value reducing factors

No.	Component group	Description
1	Misc.	Main inspection - No evidence - No deduction
2	Seat - front	Seat cover - left side (Plus rechts, Flecken) - Soiled - Clean
3	Rear bumper	Rear bumper - Scratch(es) - Paint
4	Bonnet	Bonnet - Dent / paintcoat damage - Repair and paint

Wear and tear



No.	Component group	Description
1	Front bumper	Front bumper - Stone chips - No deduction
2	Trim / covers	Boot sill cover - Scratched - No deduction

The vehicle shows signs of wear commensurate with its age and use.

Previous damages

No.	Previous damage	Extent of damage (Net)
1	Front, Provided by user / customer, from 6 Oct 2024	3.322,98 €

Repainting

No.	Repainting
1	Bonnet, Professionally carried out, Invoice of repair done Non-existent

Paint coat thickness measurement

Bonnet	216 µm
--------	--------

Order/Scope of order

The order was placed to prepare a sales report for the vehicle described. This includes the following:

- Description of core relevant information about the vehicle
- Documentation of equipment features
(*Delivery by third-party service providers*)
- Documentation of damage, defects, missing parts
- Documentation of previous damage, unrepaired previous damage, repainting
- a brief visual or functional inspection of the equipment details if possible.
(*Functional tests of driver assistance systems are not included in the scope of services!*)
- a photo documentation of the vehicle

Basis for the order

This product is based on the Alphabet Fuhrpark GmbH guidelines for vehicle returns and valuations. The expert makes the explicit findings in each individual case objectively within the framework of the specified standards based on his or her own expertise.

The vehicle inspection takes place in a disassembled state.

Damage or defects that can only be detected during disassembly/diagnosis work or through advanced knowledge remain within the scope of the prognosis risk. An extended risk exists for concealed defects caused by fraudulent deception and not identifiable by the expert.

Damage or defects resulting from normal use or wear and tear of the vehicle will be accepted according to the applicable standard.

There was no explicit identification or monetary consideration of the expected features within the product.

Features which in their nature and severity slightly exceed normal use but do not constitute unacceptable damage will be documented and identified under signs of use if necessary.

Damage or defects which, according to the underlying standard, can no longer be attributed to normal use or wear and tear are listed in the product under "Depreciating Factors".

Depending on the product specification, a monetary ID can be provided. If this takes place, the costs can be 100% d or pro rata depending on the vehicle's age and mileage.

Previous damages

According to available information previous damages were repaired at the vehicle. Traces of repairs, which allow conclusions about the area of repair, were not recognizable during the inspection.



Comments

- Winterradsatz ist kein Bestandteil des Auslieferumfangs.



Figure 1: Diagonal front (left)



Figure 2: Diagonal front (right)



Figure 3: Diagonal rear (left)



Figure 4: Diagonal rear (right)



Figure 5: Interior - front



Figure 6: Interior - rear



Figure 7: Instrument cluster



Figure 8: Instrument panel



Figure 9: interior 360° view ([Online link](#))



Figure 10: Cargo area

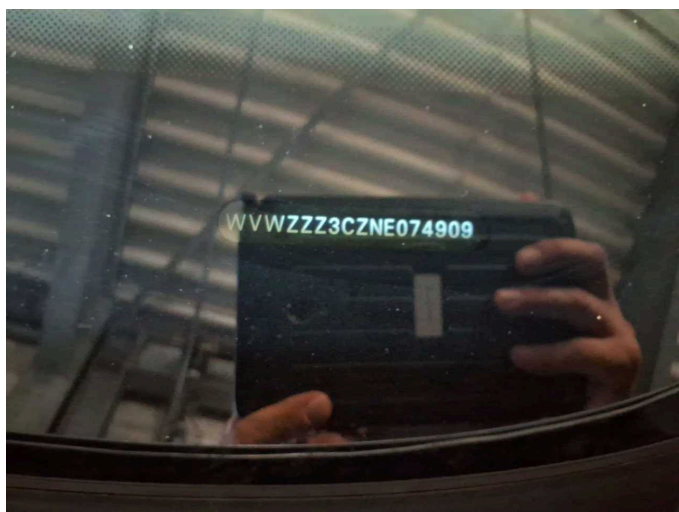


Figure 11: VIN



Figure 12: Mounted tyres

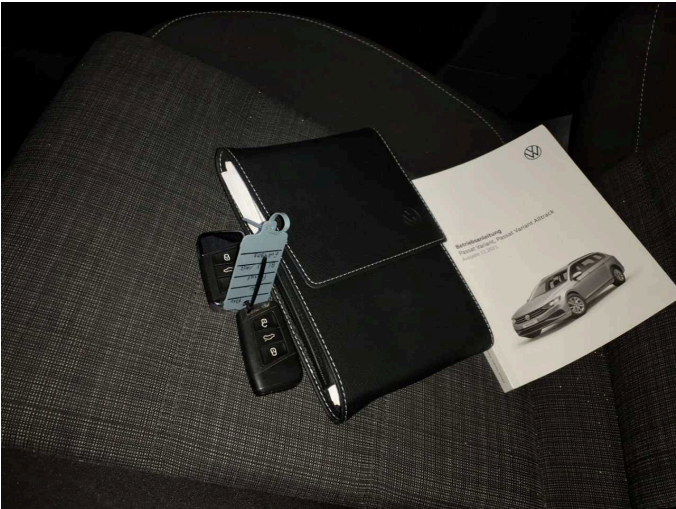


Figure 13: Documents



Figure 14: Additional tyres



Figure 15: Navigation



Figure 16: Misc.

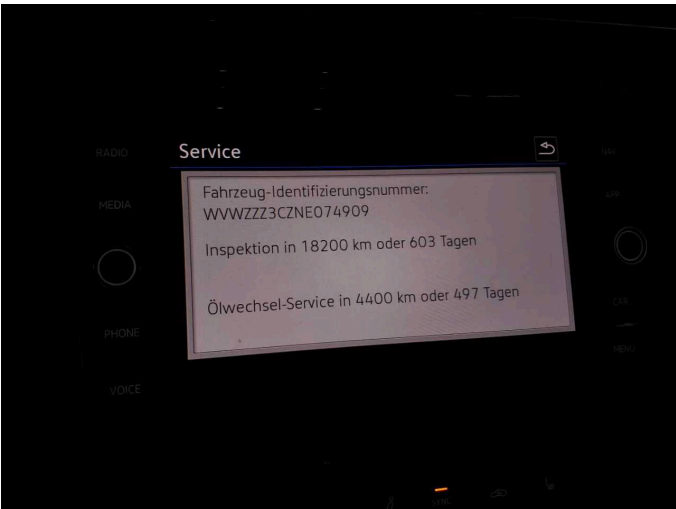


Figure 17: Misc.

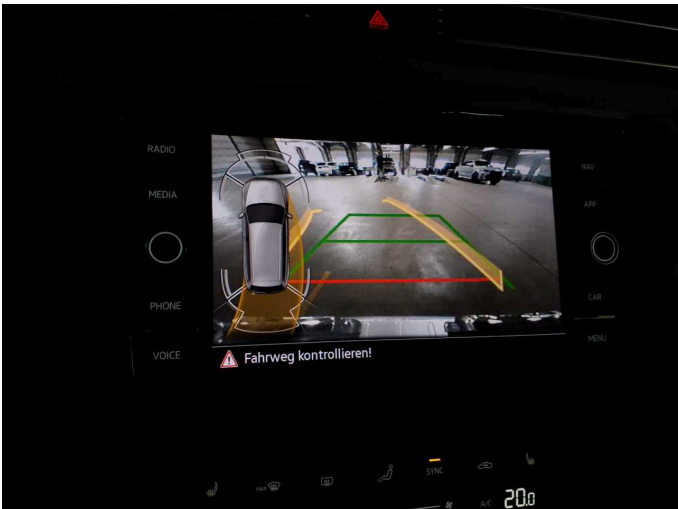


Figure 18: Misc.



Figure 19: Misc.



Figure 20: Misc.



Figure 21: Misc.



Figure 22: Misc.



Figure 23: Misc.



Figure 24: Misc.

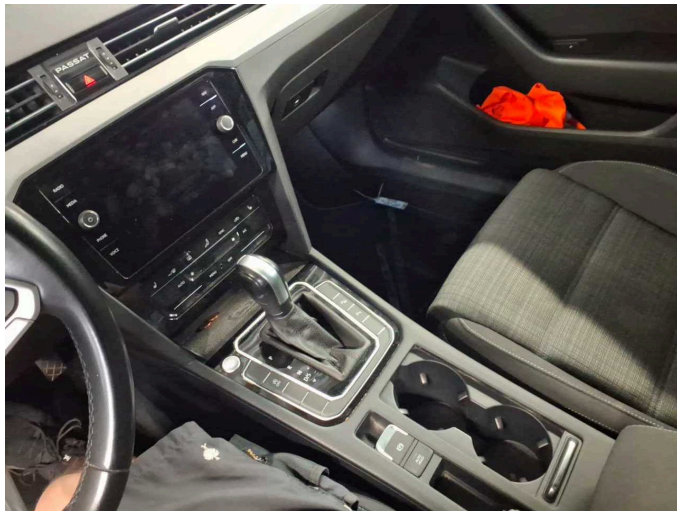


Figure 25: Misc.



Figure 26: Misc.



Figure 27: Misc.

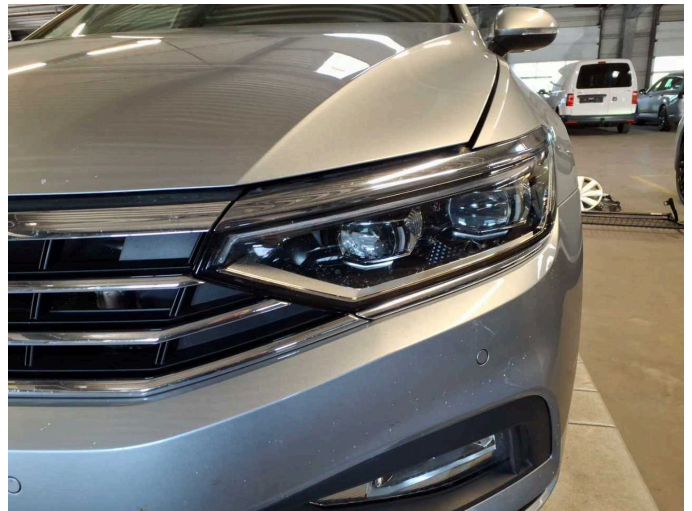


Figure 28: Misc.

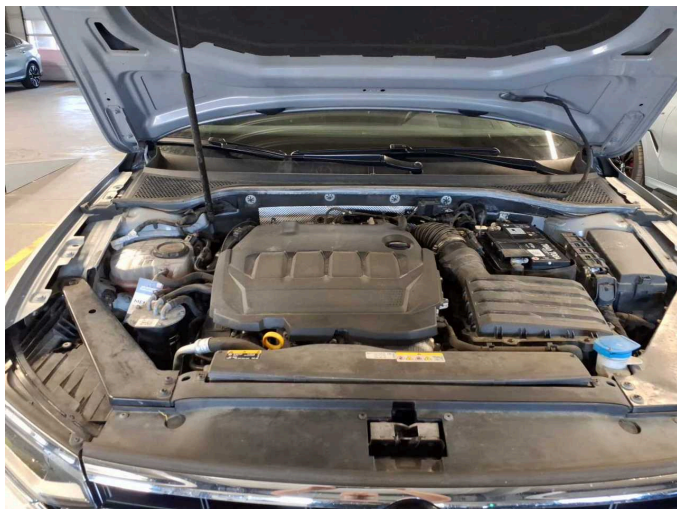


Figure 29: Misc.



Figure 30: Misc.

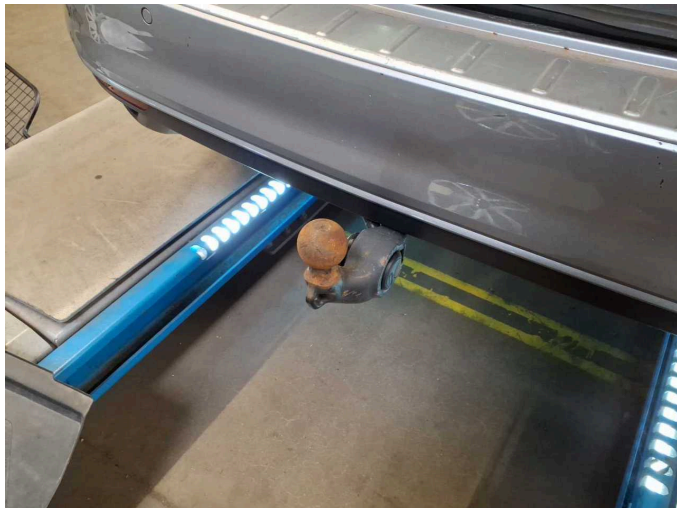


Figure 31: Misc.



Figure 32: Misc.

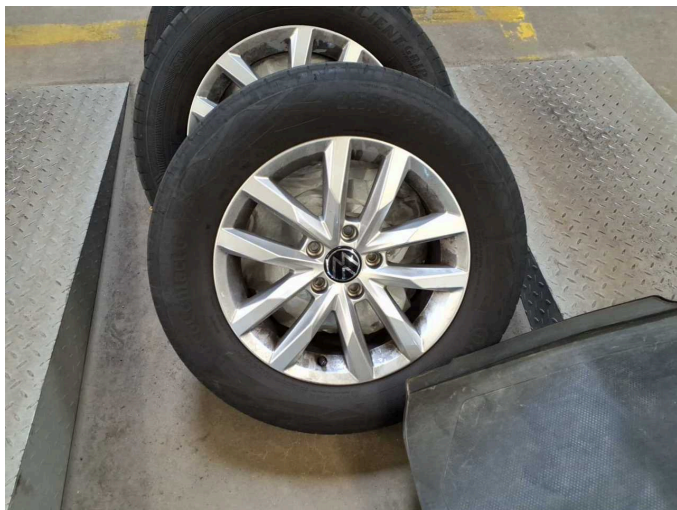


Figure 33: Misc.



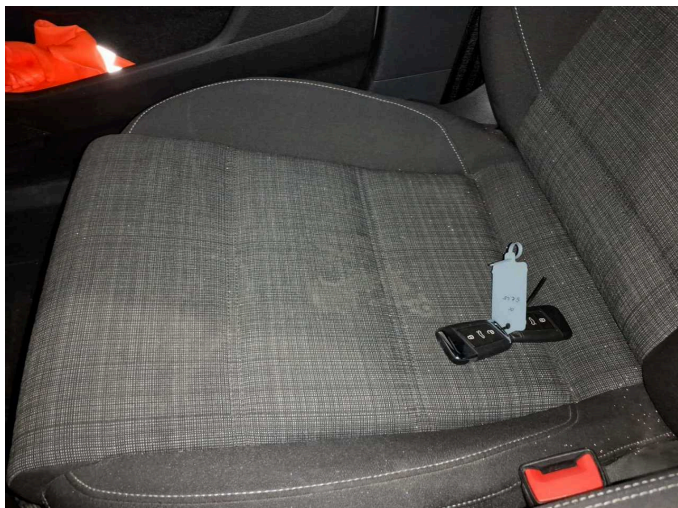
Figure 34: Misc.



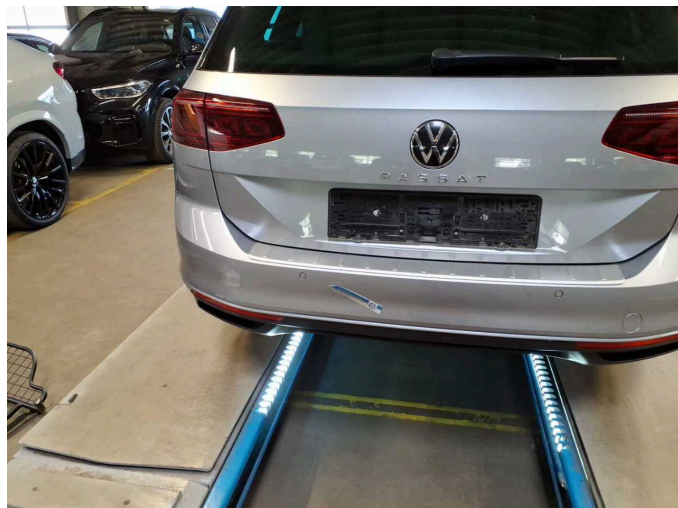
Figure 35: Misc.



Damage 2: Seat - front: Seat cover - left side (Plus rechts, Flecken) - Soiled - Clean



Damage 2: Seat - front: Seat cover - left side (Plus rechts, Flecken) - Soiled - Clean



Damage 3: Rear bumper: Rear bumper - Scratch(es) - Paint



Damage 3: Rear bumper: Rear bumper - Scratch(es) - Paint



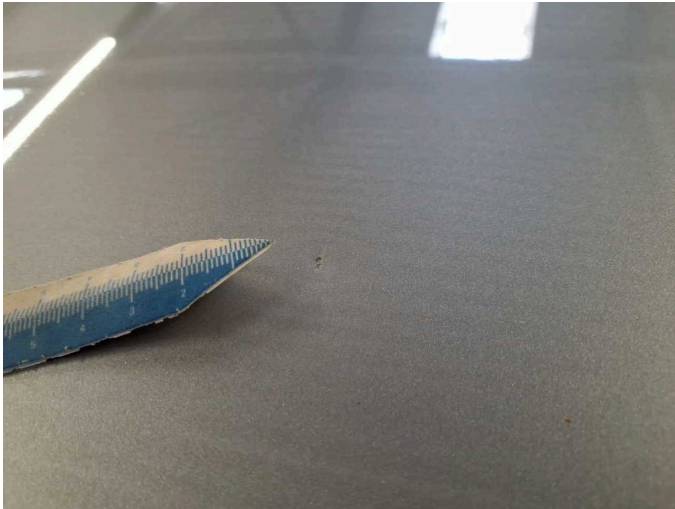
Damage 3: Rear bumper: Rear bumper - Scratch(es) - Paint



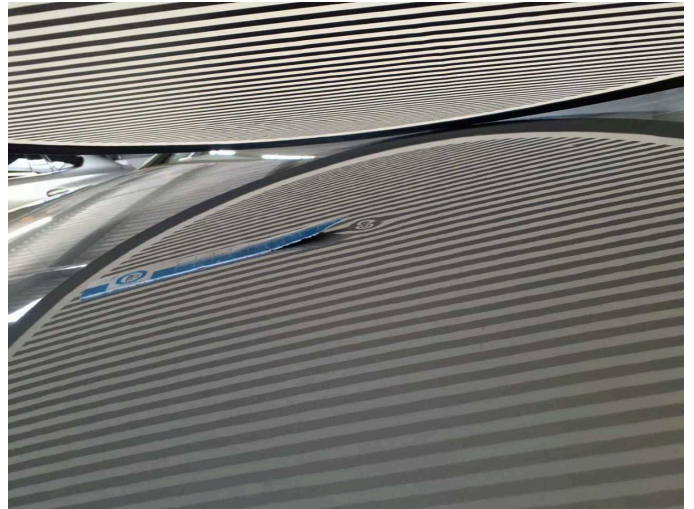
Damage 3: Rear bumper: Rear bumper - Scratch(es) - Paint



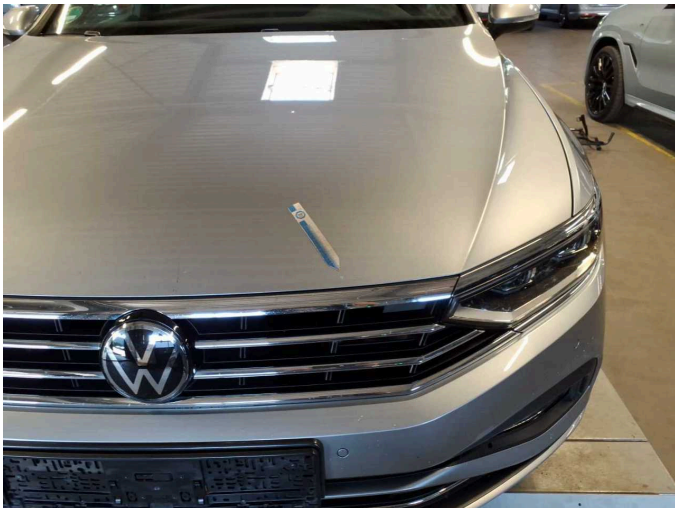
Damage 4: Bonnet: Bonnet - Dent / paintcoat damage - Repair and paint



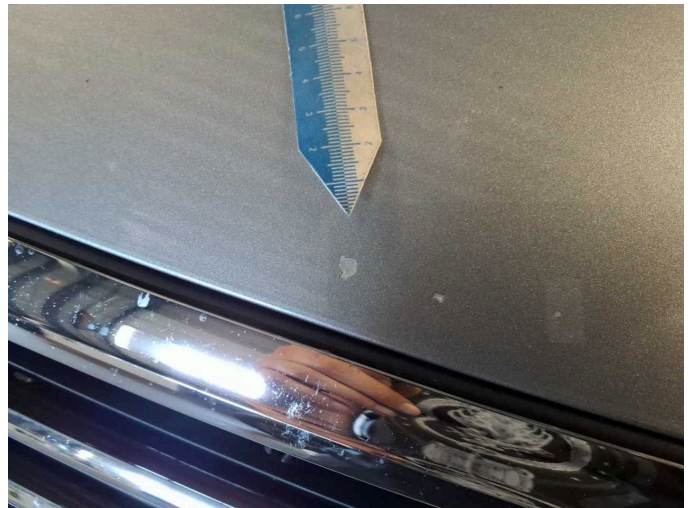
Damage 4: Bonnet: Bonnet - Dent / paintcoat damage - Repair and paint



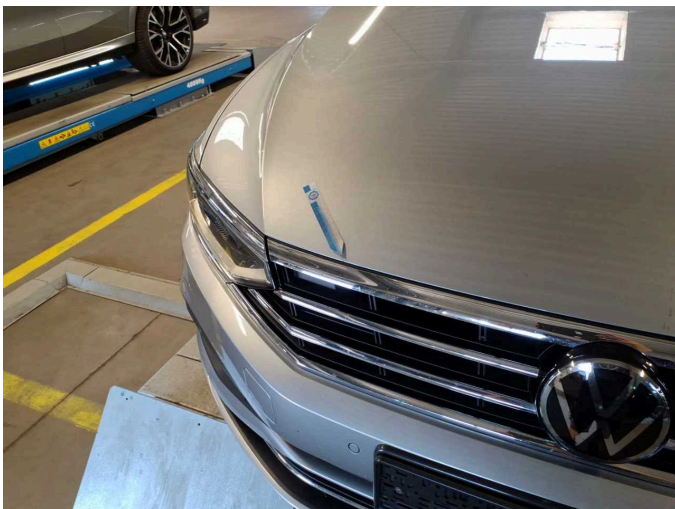
Damage 4: Bonnet: Bonnet - Dent / paintcoat damage - Repair and paint



Damage 4: Bonnet: Bonnet - Dent / paintcoat damage - Repair and paint



Damage 4: Bonnet: Bonnet - Dent / paintcoat damage - Repair and paint



Damage 4: Bonnet: Bonnet - Dent / paintcoat damage - Repair and paint



Damage 4: Bonnet: Bonnet - Dent / paintcoat damage - Repair and paint



Wear and tear 2: Trim / covers: Boot sill cover - Scratched - No deduction



Wear and tear 2: Trim / covers: Boot sill cover - Scratched - No deduction



Repainting 1: Bonnet



Wartungshistorie

(gemäß Auftraggeber Informationen)

Fahrgestellnummer: WVVZZZ3CZNE074909

Hersteller / Modell: VOLKSWAGEN VW Passat Variant 2.0 TDI SCR DSG Business

Datum	KM-Stand	Beschreibung
23.07.2025	126.868	AU; Batterie ern; Bremse Sonstiges; Bremsklötze hinten; Bremsklötze vorne; Bremsscheiben vorne; Keilrippenriemen; Motoröl b. Wartung; Ölfilter ern; Ölwechsel; Reparatur Sonstiges; Schwingungsdämpfer ern; Systemtest/Eigendiagnose; Wartung Sonstiges; Wasserpumpe ern
16.04.2025	115.263	Getriebeöl ern/prüfen; Regelwartungsdienst; Wartung Sonstiges
19.02.2025	103.540	Motoröl b. Wartung; Ölfilter ern; Ölwechsel; Wartung Sonstiges
09.12.2024	94.732	Bremse Sonstiges; Bremsklötze hinten; Bremsklötze vorne; Bremsscheiben hinten; Bremsscheiben vorne
26.07.2024	85.719	Kraftstofffilter ern; Luftfiltereinsatz ern; Regelwartungsdienst; Systemtest/Eigendiagnose; Wartung Sonstiges
13.05.2024	78.197	Bremsflüssigkeit; Bremsflüssigkeit ern; Motoröl b. Wartung; Ölfilter ern; Ölwechsel; Wartung Sonstiges
12.10.2023	55.259	Motoröl b. Wartung; Ölfilter ern; Regelwartungsdienst; Wartung Sonstiges
10.02.2023	26.820	Motoröl b. Wartung; Regelwartungsdienst